



# SERVICE BULLETIN

QUALITY INFORMATION ANALYSIS  
OVERSEAS SERVICE DEPT. MITSUBISHI MOTORS CORPORATION

<b>SERVICE BULLETIN</b>		No.: MSB-98E00-001	
		Date: 1998-05-15	<Model> <M/Y>
<b>Subject:</b> YEAR MODEL CHANGES FOR '98 MODEL LANCER WAGON		(EC,EXP) LANCER HATCHBACK	98-10
<b>Group:</b> GENERAL		<b>Draftno:</b> 97-TA-012 (CBOV)	
<b>INFORMATION</b>	OVERSEAS SERVICE DEPT	<i>R. Usami</i> R. USAMI - MANAGER QUALITY INFORMATION ANALYSIS	

### 1. Description:

This Service Bulletin informs you of year model changes for the 1998 model Lancer Wagon.

### 2. Applicable Manuals:

Manual	Pub. No.	Language	Page(s)
LANCER Workshop Manual	PWME9117-F	(English)	
	PWMS9118-F	(Spanish)	
	PWMF9119-F	(French)	
	PWMG9120-F	(German)	
	PWMD9121-F	(Dutch)	
	PWMW9122-F	(Swedish)	

### 3. Effective Date:

From 1998 model.

# MITSUBISHI LANCER

## WORKSHOP MANUAL SUPPLEMENT

### FOREWORD

This manual outlines changes in servicing procedures related to the chassis including vehicle inspections, adjustments and improvements in the newly equipped models.

Use the following manuals in combination with this manual as required.

#### TECHNICAL INFORMATION MANUAL

PYME9116  
PYME9116-A

#### WORKSHOP MANUAL

##### CHASSIS GROUP

PWME9117  
(Looseleaf edition)

##### ENGINE GROUP

PWEE □□□□  
(Looseleaf edition)

##### ELECTRICAL WIRING

PHME9107-F  
PHME9339-1  
PHME9107-G

##### BODY REPAIR MANUAL

PBME9107

#### PARTS CATALOGUE

B606A508A □

All information, illustrations and product descriptions contained in this manual are current as at the time of publication. We, however, reserve the right to make changes at any time without prior notice or obligation.

General ..... 00

Chassis Electrical ..... 54



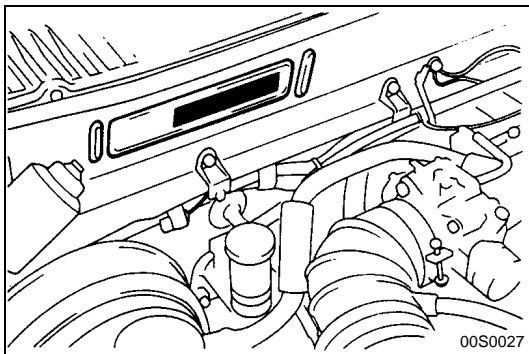
# GROUP 00

# GENERAL

## VEHICLE IDENTIFICATION



### MODELS

Model code		Engine model	Transmission model	Fuel supply system
CB4W	LNDEQL6	4G92 (1,597 ml)	F5M22 (2WD-5M/T)	MPI
	LNJEQL6/R6			
	LNDGQL6			
	LNJGQL6		F4A22 (2WD-4A/T)	
	LRJEQL6/R6			
	LRJGQL6			
CD4W	LNDEQL6	4G92 (1,597 ml)	W5M31 (4WD-5M/T)	MPI
	LNJEQL6/R6			



### CHASSIS NUMBER

The chassis number is stamped on the toeboard inside the engine compartment


**J M B L N CB 4 W W U 000001**
  
 1 2 3 4 5 6 7 8 9 10 11

- |   |  |
|---|--|
| <ul style="list-style-type: none"> <li>1. Asis</li> <li>2. Japan</li> <li>3. MITSUBISHI                         <ul style="list-style-type: none"> <li>A - For Europe, right hand drive</li> <li>B - For Europe, left hand drive</li> </ul> </li> <li>4. Body style                         <ul style="list-style-type: none"> <li>L - 4-door station wagon</li> </ul> </li> <li>5. Transmission type                         <ul style="list-style-type: none"> <li>N - 5-speed manual transmission</li> <li>R - 4-speed automatic transmission</li> </ul> </li> <li>6. Development order                         <ul style="list-style-type: none"> <li>CB: LANCER &lt;2WD&gt;</li> <li>CD: LANCER &lt;4WD&gt;</li> </ul> </li> </ul> | <ul style="list-style-type: none"> <li>7. Engine                         <ul style="list-style-type: none"> <li>4 - 4G92: 1,597 ml</li> </ul> </li> <li>8. Sort                         <ul style="list-style-type: none"> <li>W - Station wagon</li> </ul> </li> <li>9. Model year                         <ul style="list-style-type: none"> <li>W - 1998</li> </ul> </li> <li>10. Plant                         <ul style="list-style-type: none"> <li>U - Mizushima Motor Vehicles Works</li> </ul> </li> <li>11. Serial number</li> </ul> |
|---|--|

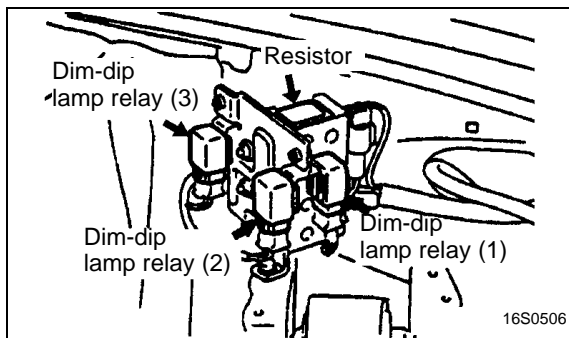
## GROUP 54

## CHASSIS ELECTRICAL

## GENERAL

## OUTLINE OF CHANGES

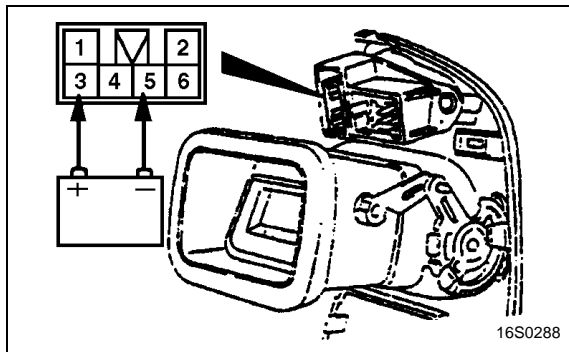
- With deletion of the dim-dip lamp, dim-dip lamp relays (1), (2), (3) and the resistor have been deleted. <RH drive vehicles>
- With change in lighting conditions for the rear fog lamp, the internal circuit for the rear fog lamp switch has been changed. Accordingly, the service procedures for the rear fog lamp switch have been established as described below. No difference exist except for the following.



- (1) Deletion of Dim-dip Lamps Relays (1), (2), (3) and Resistor
- (2) Change in Lighting Conditions for Rear Fog Lamp.

With the headlamps coming on, when the rear fog lamp switch is turned On, the rear fog lamp comes on, and when the rear fog lamp switch is again depressed, the rear fog lamp goes out.

When the headlamps go out, the rear fog lamp also goes out.



## REAR FOG LAMP

## INSPECTION

## REAR FOG LAMP SWITCH

- (1) Connect the battery cables across the terminals of rear fog lamp switch connector, as shown.
- (2) Every time the rear fog lamp switch is depressed, if outputs of 0V and 12V appear repeatedly across terminal No.4 and if there is always continuity between terminals No.2 and No.6, the rear fog lamp switch operates properly.