

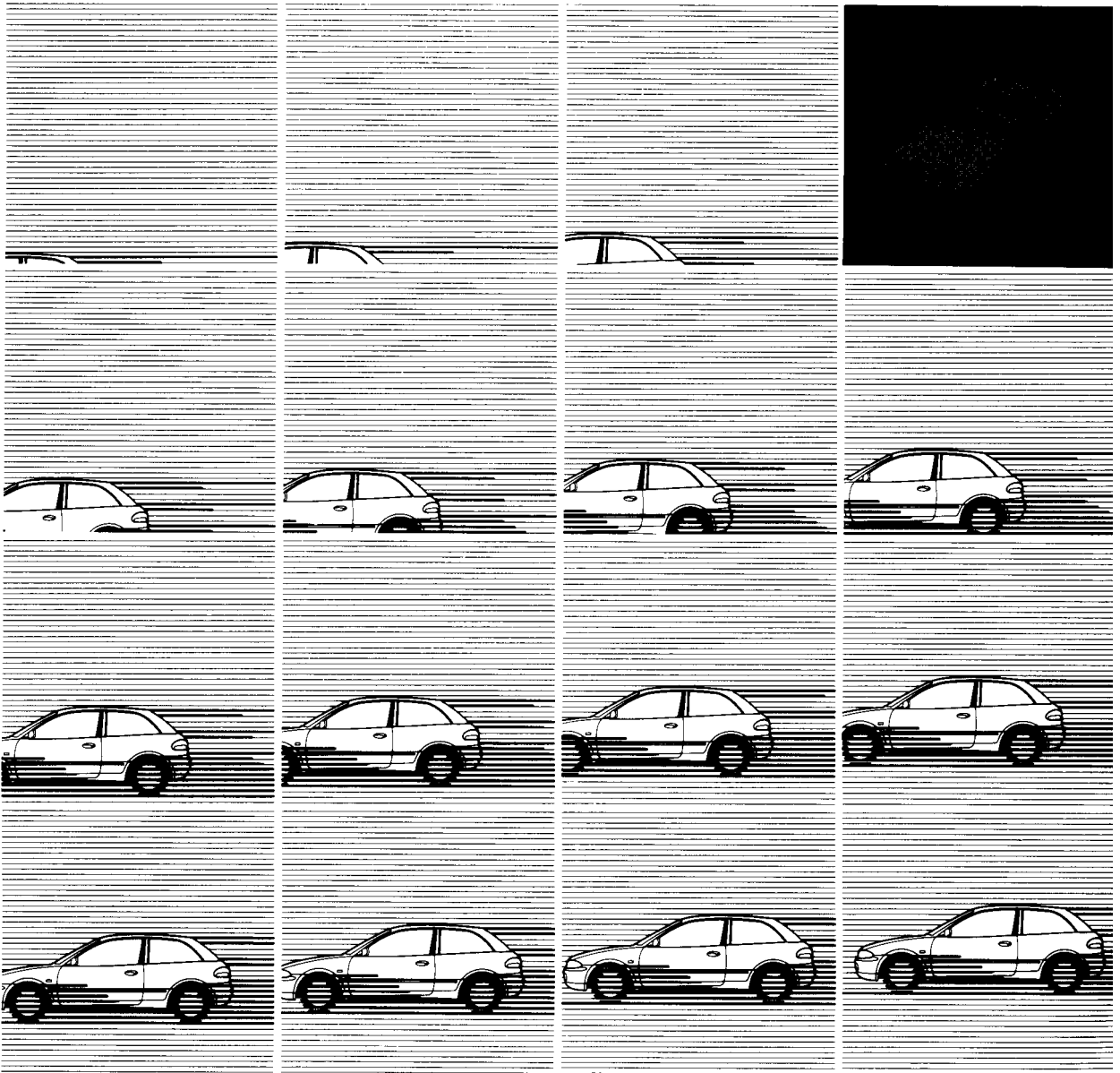


# Workshop Manual

## electrical wiring

SUPPLEMENT

# LANCER '98



Pub. No. PHME9107-G

# MITSUBISHI LANCER

## ELECTRICAL WIRING SUPPLEMENT

### FOREWORD

This Electrical Wiring Manual contains information necessary for inspection and servicing of electrical wiring in the Mitsubishi LANCER edited in the form of wiring harness configuration diagrams and function-separated circuit diagrams. It is recommended that all service mechanics engaged in the servicing of the vehicle refer to the following publications as well as this manual.

#### TECHNICAL INFORMATION MANUAL

PYME9116  
PYME9116-1

#### WORKSHOP MANUAL

##### CAHSSIS GROUP

PWME9117  
(Looseleaf edition)

##### ENGINE GROUP

PWEE□□□□  
(Looseleaf edition)

##### ELECTRICAL WIRING

PHME9107-D  
PHME9107-E  
PHME9107-F

##### BODY REPAIR MANUAL

PBME9107

#### PARTS CATALOGUE

B606A508A□

All information, illustrations and product descriptions contained in this manual are current as of time of publication. We, however, reserve the right to make changes at any time without prior notice or obligation.

### GROUP INDEX

OUTLINE OF CHANGES .....

HOW TO READ THE  
WIRING DIAGRAMS .....

CIRCUIT DIAGRAM .....

1

4



# HOW TO USE THIS MANUAL

## CONTENTS

The preceding page contains GROUP INDEX which lists the group title and group number.

## PAGE NUMBERS

All page numbers consist of two sets of digits separated by a dash. The digits preceding the dash identify the number of the group. The digits following the dash represent the consecutive page number within the group. The page numbers can be found on the top left or right of each page.

---

# OUTLINE OF CHANGES

## CONTENTS

WIRING HARNESS CONFIGURATION DIAGRAMS .....	2	TABLE OF CIRCUIT DIAGRAMS .....	3
CIRCUIT DIAGRAMS .....	2		

---

## WIRING HARNESS CONFIGURATION DIAGRAMS

Wiring harness configuration diagrams			Reference page	Description of changes
Connector symbol	Name			
A	ENGINE COMPARTMENT	4G92 SOHC-MPI (Except MVV) <R.H. drive vehicles>	-	<p>The following connectors are no longer used.</p> <ul style="list-style-type: none"> <li>● Dim-dip lamp relay (I)</li> <li>● Dim-dip lamp relay (II)</li> <li>● Dim-dip lamp relay (III)</li> <li>● Resistor &lt;Vehicles with dim-dip lamp&gt;</li> </ul>

## CIRCUIT DIAGRAMS

Circuit diagrams			Reference page	Description of changes
Main title	Subtitle			
HEADLAMP	R.H. drive vehicles		4-3	The circuit has been changed to correspond to the abolition of the dim-dip lamp relay.
REAR FOG LAMP	L.H. drive vehicles		4-4	The circuit has been changed to correspond to changes in the rear fog lamp switch.
	R.H. drive vehicles		4-8	The circuit has been changed to correspond to changes in the rear fog lamp switch.

**TABLE OF CIRCUIT DIAGRAMS**

This table of circuit diagrams indicates those circuit in which changes and/or addition, etc. have been made, the circuits are here listed in the sequence in which they are presented in the wiring diagrams. Please use this table for reference when following maintenance or repair procedures.

**NOTE**

- (1) A (Added) : This circuit has been newly added in this manual.
- (2) R (Revised) : This circuit has been changed, and is included in this manual.
- (3) D (Deleted) : This circuit has been deleted in this manual.
- (4) I (Included) : This circuit is included in this manual.
- (5) N (Not included) : This circuit is not included in this manual.
- (6) P (Previous manual) : This circuit is not included in this manual, because it has not been changed.  
Refer to this previous manuals.

Main circuit	Circuit classifications	Pub No. PHME9107-D (Basic)	Pub No. PHME9107-E (Supplement)	Pub No. PHME9107-F (Supplement)	Pub No. PHME9107-G (Supplement)
JUNCTION BLOCK	L.H. drive vehicles	I	P	P	P
	R.H. drive vehicles	I	P	P	P
JUMPER CONNECTOR	–	I	P	P	P
CENTRALIZED JUNCTION	–	I	P	P	P
POWER DISTRIBUTION SYSTEM	L.H. drive vehicles	I	P	P	P
	R.H. drive vehicles	I	P	P	P
STARTING SYSTEM	Petrol	I	P	P	P
	Diesel	I	D	N	N
	Diesel <Vehicles for Europe>	N	A	D	N
IGNITION SYSTEM	4G13 <L.H. drive vehicles>	I	P	D	N
	4G13 <R.H. drive vehicles>	I	P	D	N
	4G92 <L.H. drive vehicles>	I	P	P	P
	4G92 <R.H. drive vehicles>	I	P	P	P
	4G93 <L.H. drive vehicles>	I	P	D	N
	4G93 <R.H. drive vehicles>	I	P	D	N
SELF-REGULATING GLOW SYSTEM	L.H. drive vehicles with EGR system	I	P	D	N
	L.H. drive vehicles without EGR system	I	D	D	N
	R.H. drive vehicles	I	P	D	N
	L.H. drive vehicles for Europe without EGR system	N	A	D	N
CHARGING SYSTEM	4G13 <L.H. drive vehicles>	I	P	D	N
	4G13 <R.H. drive vehicles>	I	P	D	N
	4G9 <L.H. drive vehicles>	I	P	P	P
	4G9 <R.H. drive vehicles>	I	P	P	P
	4D68 <L.H. drive vehicles>	I	P	D	N
	4D68 <R.H. drive vehicles>	I	P	D	N

## OUTLINE OF CHANGES – Table of Circuit Diagrams

Main circuit	Circuit classifications	Pub No. PHME9107-D (Basic)	Pub No. PHME9107-E (Supplement)	Pub No. PHME9107-F (Supplement)	Pub No. PHME9107-G (Supplement)
MPI SYSTEM	4G13 <L.H. drive vehicles>	I	P	D	N
	4G13 <R.H. drive vehicles>	I	P	D	N
	4G92 <L.H. drive vehicles (MVV)>	I	R	D	N
	4G92 <R.H. drive vehicles (MVV)>	I	R	D	N
	4G92 <L.H. drive vehicles (except MVV)>	I	P	D	N
	4G92 <R.H. drive vehicles (except MVV)>	I	P	D	N
	4G93 <L.H. drive vehicles>	I	D	N	N
	4G93 <R.H. drive vehicles>	I	D	N	N
	4G93 <L.H. drive vehicles for Europe>	N	A	D	N
	4G93-DOHC <R.H. drive vehicles for General Export>	N	A	D	N
	4G92 <L.H. drive vehicles with immobilizer system>	N	N	A	P
	4G92 <L.H. drive vehicles without immobilizer system>	N	N	A	P
	4G92 <R.H. drive vehicles>	N	N	A	P
COOLING SYSTEM	4G13	I	P	D	N
	4G9	I	P	P	P
	4D68	I	P	D	N
ELC 4-SPEED AUTOMATIC TRANSMISSION	L.H. drive vehicles	I	P	P	P
	R.H. drive vehicles	I	P	P	P
HEADLAMP	Vehicles with daytime running lamp	I	P	R	P
	L.H. drive vehicles without daytime running lamp	I	P	R	P
	R.H. drive vehicles	I	P	R	R
HEADLAMP LEVELING SYSTEM	L.H. drive vehicles	I	P	P	P
	R.H. drive vehicles	I	P	P	P
TAIL LAMP, POSITION LAMP, LICENCE PLATE LAMP AND LIGHTING MONITOR BUZZER	Hatchback <L.H. drive vehicles>	I	P	D	N
	Hatchback <R.H. drive vehicles>	I	P	D	N
	Sedan <L.H. drive vehicles>	I	P	D	N
	Sedan <R.H. drive vehicles>	I	P	D	N
	Wagon <L.H. drive vehicles>	I	P	R	P
	Wagon <R.H. drive vehicles>	I	P	R	P
FRONT FOG LAMP	L.H. drive vehicles	I	P	R	P
	R.H. drive vehicles	I	P	R	P

# OUTLINE OF CHANGES – Table of Circuit Diagrams

Main circuit	Circuit classifications	Pub No. PHME9107-D (Basic)	Pub No. PHME9107-E (Supplement)	Pub No. PHME9107-F (Supplement)	Pub No. PHME9107-G (Supplement)
REAR FOG LAMP	Hatchback and wagon <L.H. drive vehicles>	I	P	D	N
	Hatchback and wagon <R.H. drive vehicles>	I	P	D	N
	Sedan <L.H. drive vehicles>	I	P	D	N
	Sedan <R.H. drive vehicles>	I	P	D	N
	L.H. drive vehicles	N	N	A	R
	R.H. drive vehicles	N	N	A	R
ROOM LAMP AND LUGGAGE COMPARTMENT LAMP	Hatchback <L.H. drive vehicles>	I	P	D	N
	Hatchback <R.H. drive vehicles>	I	P	D	N
	Sedan <L.H. drive vehicles>	I	P	D	N
	Sedan <R.H. drive vehicles>	I	P	D	N
	Wagon <L.H. drive vehicles>	I	P	P	P
	Wagon <R.H. drive vehicles>	I	P	P	P
TURN-SIGNAL LAMP AND HAZARD LAMP	Hatchback and sedan <L.H. drive vehicles>	I	P	D	N
	Hatchback and sedan <R.H. drive vehicles>	I	P	D	N
	Wagon <L.H. drive vehicles>	I	P	R	P
	Wagon <R.H. drive vehicles>	I	P	R	P
STOP LAMP	Hatchback <L.H. drive vehicles>	I	R	D	N
	Hatchback <R.H. drive vehicles>	I	P	D	N
	Sedan <L.H. drive vehicles>	I	R	D	N
	Sedan <R.H. drive vehicles>	I	P	D	N
	Wagon <L.H. drive vehicles>	I	R	P	P
	Wagon <R.H. drive vehicles>	I	P	P	P
BACK-UP LAMP	Hatchback <L.H. drive vehicles>	I	P	D	N
	Hatchback <R.H. drive vehicles>	I	P	D	N
	Sedan <L.H. drive vehicles>	I	P	D	N
	Sedan <R.H. drive vehicles>	I	P	D	N
	Wagon <L.H. drive vehicles>	I	P	P	P
	Wagon <R.H. drive vehicles>	I	P	P	P
HORN	L.H. drive vehicles with SRS	I	P	P	P
	R.H. drive vehicles with SRS	I	P	P	P
	L.H. drive vehicles without SRS	I	P	R	P
	R.H. drive vehicles without SRS	I	P	R	P



## OUTLINE OF CHANGES – Table of Circuit Diagrams

Main circuit	Circuit classifications	Pub No. PHME9107-D (Basic)	Pub No. PHME9107-E (Supplement)	Pub No. PHME9107-F (Supplement)	Pub No. PHME9107-G (Supplement)
METER AND GAUGE	2WD <L.H. drive vehicles>	I	P	P	P
	2WD <R.H. drive vehicles>	I	P	P	P
	4WD <L.H. drive vehicles>	I	P	P	P
	4WD <R.H. drive vehicles>	I	P	P	P
FUEL WARNING LAMP	L.H. drive vehicles <2WD>	I	P	P	P
	L.H. drive vehicles <4WD>	I	P	P	P
BRAKE WARNING LAMP	L.H. drive vehicles	I	P	P	P
OIL PRESSURE WARNING LAMP	L.H. drive vehicles	I	P	P	P
FUEL FILTER WARNING LAMP	L.H. drive vehicles <Diesel>	I	P	D	N
CENTRAL DOOR LOCKING SYSTEM	Hatchback <L.H. drive vehicles>	I	P	D	N
	Hatchback <R.H. drive vehicles>	I	P	D	N
	Sedan and wagon <L.H. drive vehicles>	I	P	P	P
	Sedan and wagon <R.H. drive vehicles>	I	P	P	P
POWER WINDOW	Hatchback <L.H. drive vehicles>	I	P	D	N
	Hatchback <R.H. drive vehicles>	I	P	D	N
	Sedan and wagon <L.H. drive vehicles>	I	P	D	N
	Sedan and wagon <R.H. drive vehicles>	I	P	D	N
	L.H. drive vehicles	N	N	A	P
	R.H. drive vehicles	N	N	A	P
HEATER	L.H. drive vehicles	I	P	P	P
	R.H. drive vehicles	I	P	P	P
AIR CONDITIONER	4G13 <L.H. drive vehicles>	I	P	D	N
	4G13 <R.H. drive vehicles>	I	P	D	N
	4G9 <L.H. drive vehicles>	I	P	R	P
	4G9 <R.H. drive vehicles>	I	P	R	P
	4D68 <L.H. drive vehicles>	I	P	D	N
	4D68 <R.H. drive vehicles>	I	P	D	N
WINDSHIELD WIPER AND WASHER	L.H. drive vehicles with intermittent wiper	I	P	R	P
	L.H. drive vehicles without intermittent wiper	I	P	D	N
	R.H. drive vehicles	I	P	R	P

# OUTLINE OF CHANGES – Table of Circuit Diagrams

Main circuit	Circuit classifications	Pub No. PHME9107-D (Basic)	Pub No. PHME9107-E (Supplement)	Pub No. PHME9107-F (Supplement)	Pub No. PHME9107-G (Supplement)
REAR WIPER AND WASHER	L.H. drive vehicles with intermittent wiper	I	P	P	P
	L.H. drive vehicles without intermittent wiper	I	P	D	N
	R.H. drive vehicles with intermittent wiper	I	D	N	N
	R.H. drive vehicles without intermittent wiper	I	P	D	N
	R.H. drive vehicles for Europe with intermittent wiper	N	A	P	P
HEADLAMP WASHER	–	I	R	R	P
DEFOGGER AND DOOR MIRROR HEATER	Hatchback <L.H. drive vehicles>	I	P	D	N
	Hatchback <R.H. drive vehicles>	I	P	D	N
	Sedan and wagon <L.H. drive vehicles>	I	P	P	P
	Sedan and wagon <R.H. drive vehicles>	I	P	P	P
REMOTE CONTROLLED MIRROR	L.H. drive vehicles	I	P	P	P
	R.H. drive vehicles	I	P	P	P
CLOCK	L.H. drive vehicles with daytime running lamp	I	P	P	P
	L.H. drive vehicles without daytime running lamp	I	P	P	P
	R.H. drive vehicles	I	P	P	P
CIGARETTE LIGHTER	L.H. drive vehicles	I	P	P	P
	R.H. drive vehicles	I	P	P	P
RADIO AND TAPE PLAYER	Hatchback <L.H. drive vehicles>	I	P	D	N
	Hatchback <R.H. drive vehicles>	I	P	D	N
	Sedan <L.H. drive vehicles>	I	P	D	N
	Sedan <R.H. drive vehicles>	I	P	D	N
	Wagon <L.H. drive vehicles>	I	P	R	P
	Wagon <R.H. drive vehicles>	I	P	R	P
SUNROOF	L.H. drive vehicles	I	P	P	P
	R.H. drive vehicles	I	P	P	P
HEATED SEAT	–	I	P	P	P

## OUTLINE OF CHANGES – Table of Circuit Diagrams

Main circuit	Circuit classifications	Pub No. PHME9107-D (Basic)	Pub No. PHME9107-E (Supplement)	Pub No. PHME9107-F (Supplement)	Pub No. PHME9107-G (Supplement)
ANTI-LOCK BRAKE SYSTEM	Hatchback <L.H. drive vehicles (2WD)>	I	D	N	N
	Hatchback <L.H. drive vehicles (4WD)>	I	P	D	N
	Hatchback <R.H. drive vehicles>	I	D	N	N
	Sedan and wagon <2WD (L.H. drive vehicles)>	I	D	N	N
	Sedan and wagon <2WD (R.H. drive vehicles)>	I	D	N	N
	Wagon <4WD (L.H. drive vehicles)>	I	P	R	P
	Wagon <4WD (R.H. drive vehicles)>	I	P	R	P
	Hatchback <L.H. drive vehicles for Europe (2WD)>	N	A	D	N
	Hatchback <R.H. drive vehicles for Europe>	N	A	D	N
	Sedan and wagon <2WD (L.H. drive vehicles for Europe)>	N	A	D	N
	Sedan and wagon <2WD (R.H. drive vehicles for Europe)>	N	A	D	N
	2WD <L.H. drive vehicles>	N	N	A	P
	2WD <R.H. drive vehicles>	N	N	A	P
FUEL LINE HEATER	–	N	A	D	N
SUPPLEMENTAL RESTRAINT SYSTEM (SRS)	L.H. drive vehicles	I	R	R	P
	R.H. drive vehicles	I	R	R	P
IMMOBILIZER SYSTEM	L.H. drive vehicles	N	N	A	P
	R.H. drive vehicles	N	N	A	P

---

# HOW TO READ THE WIRING DIAGRAMS

## CONTENTS

MODELS ..... 1-2



**MODELS**

Model code		Engine model	Transmission model	Fuel supply system
CB4W	LNDEQL6	4G92 (1, 597 mℓ)	F5M22 (2WD-5M/T)	MPI
	LNJEQL6/R6			
	LRJEQL6/R6		F4A22 (2WD-4A/T)	
	LNDGQL6		F5M22 (2WD-5M/T)	
	LNJGQL6			
	LRJGQL6		F4A22 (2WD-4A/T)	
CD4W	LNDEQL6		W5M31 (4WD-5M/T)	
	LNJEQL6/R6			

# CIRCUIT DIAGRAM

## CONTENTS

### HEADLAMP

R.H. drive vehicles ..... 4-3

### REAR FOG LAMP

L.H. drive vehicles ..... 4-4

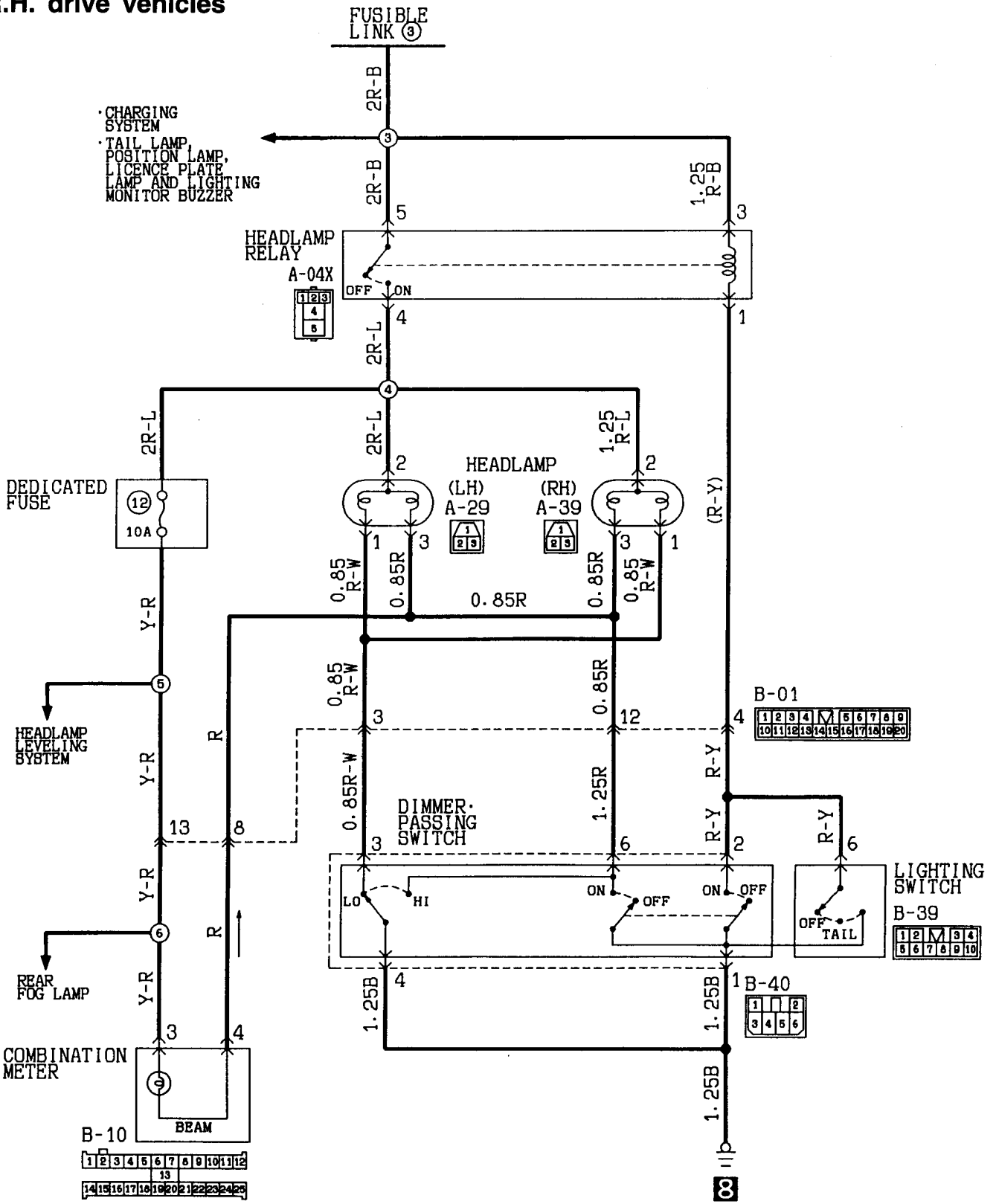
R.H. drive vehicles ..... 4-8

---

NOTES

# HEADLAMP

R.H. drive vehicles

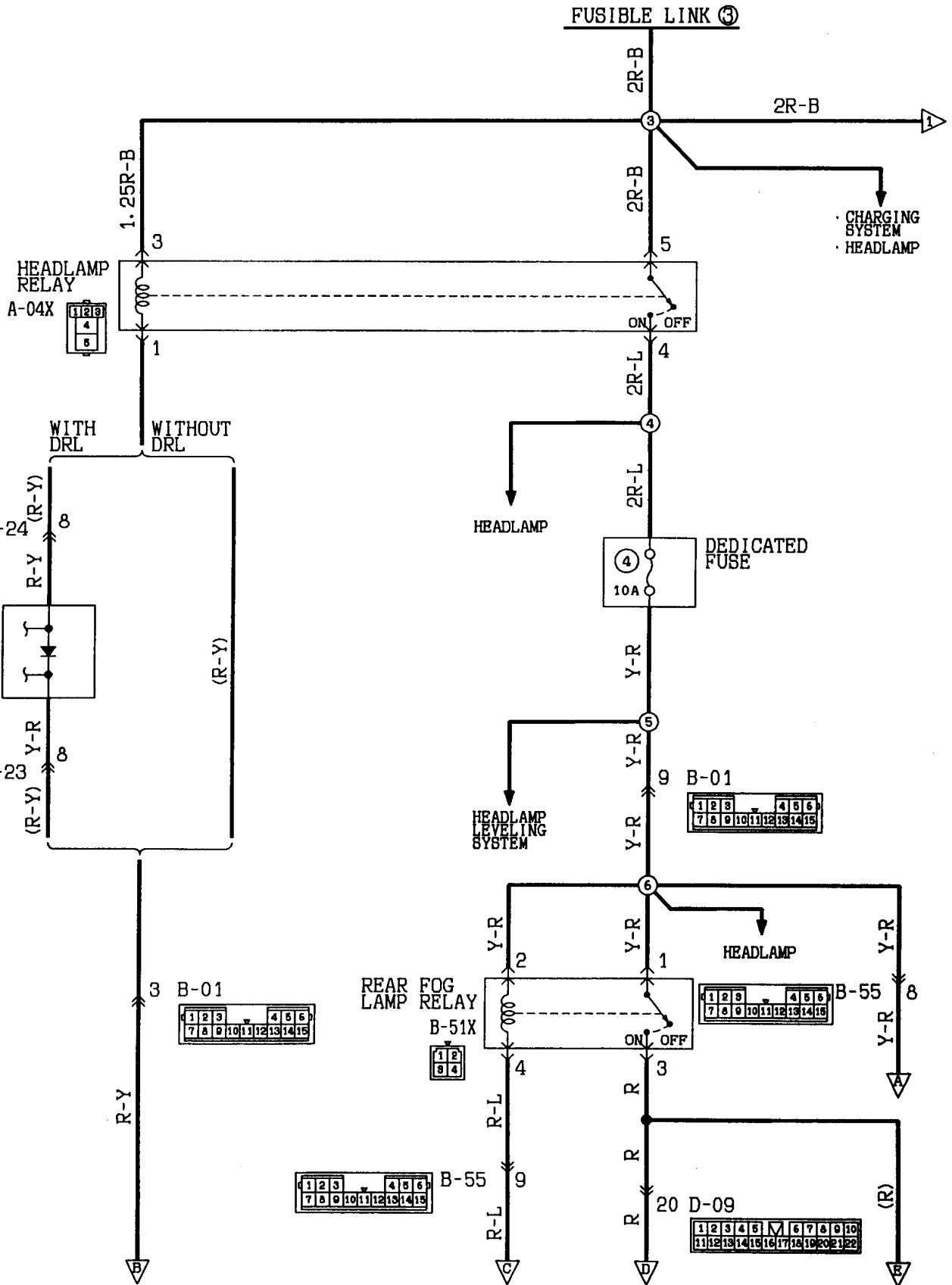


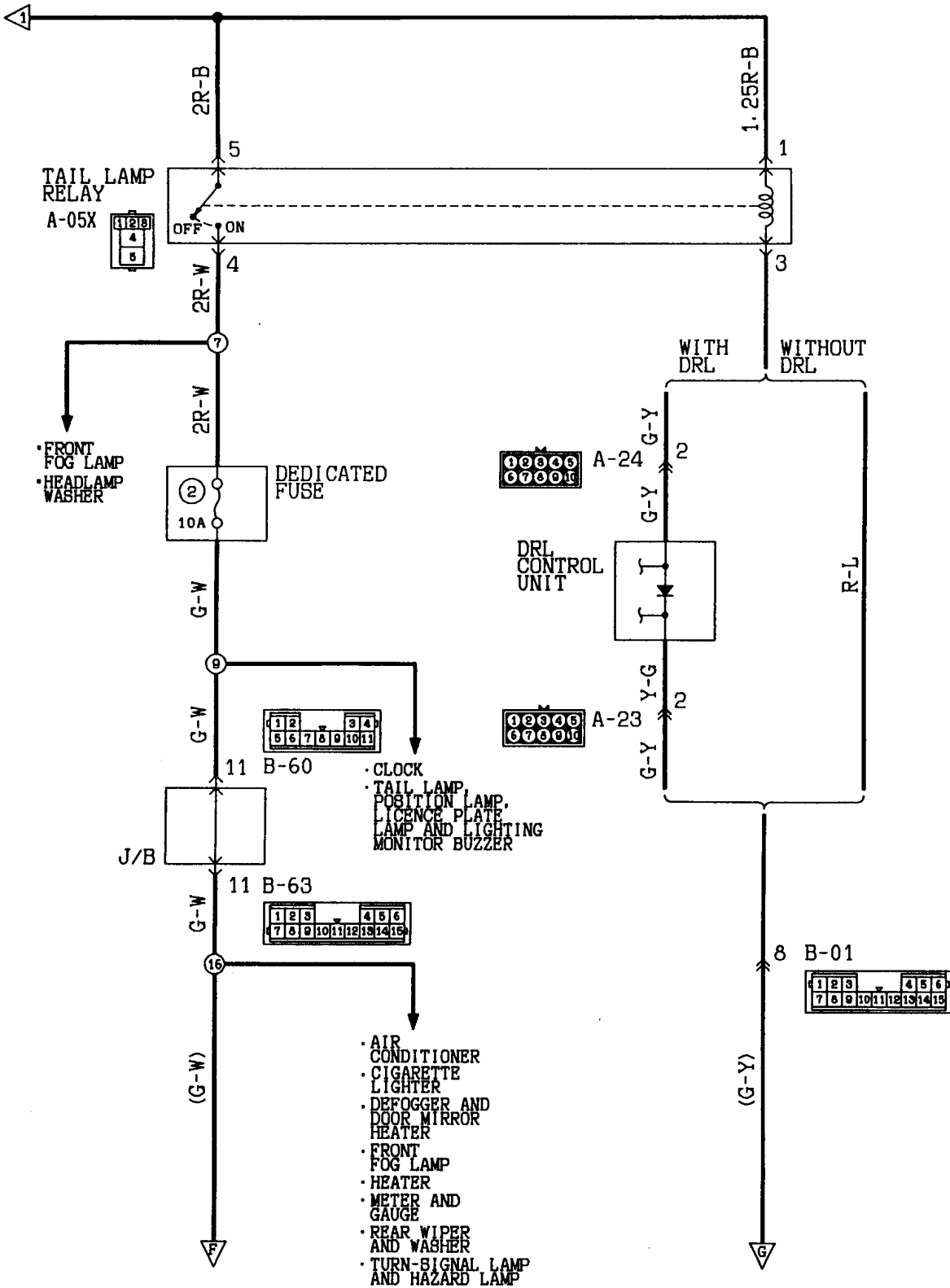
Wire colour code  
 B : Black    LG : Light green    G : Green    L : Blue    W : White    Y : Yellow    SB : Sky blue  
 BR : Brown    O : Orange    GR : Gray    R : Red    P : Pink    V : Violet



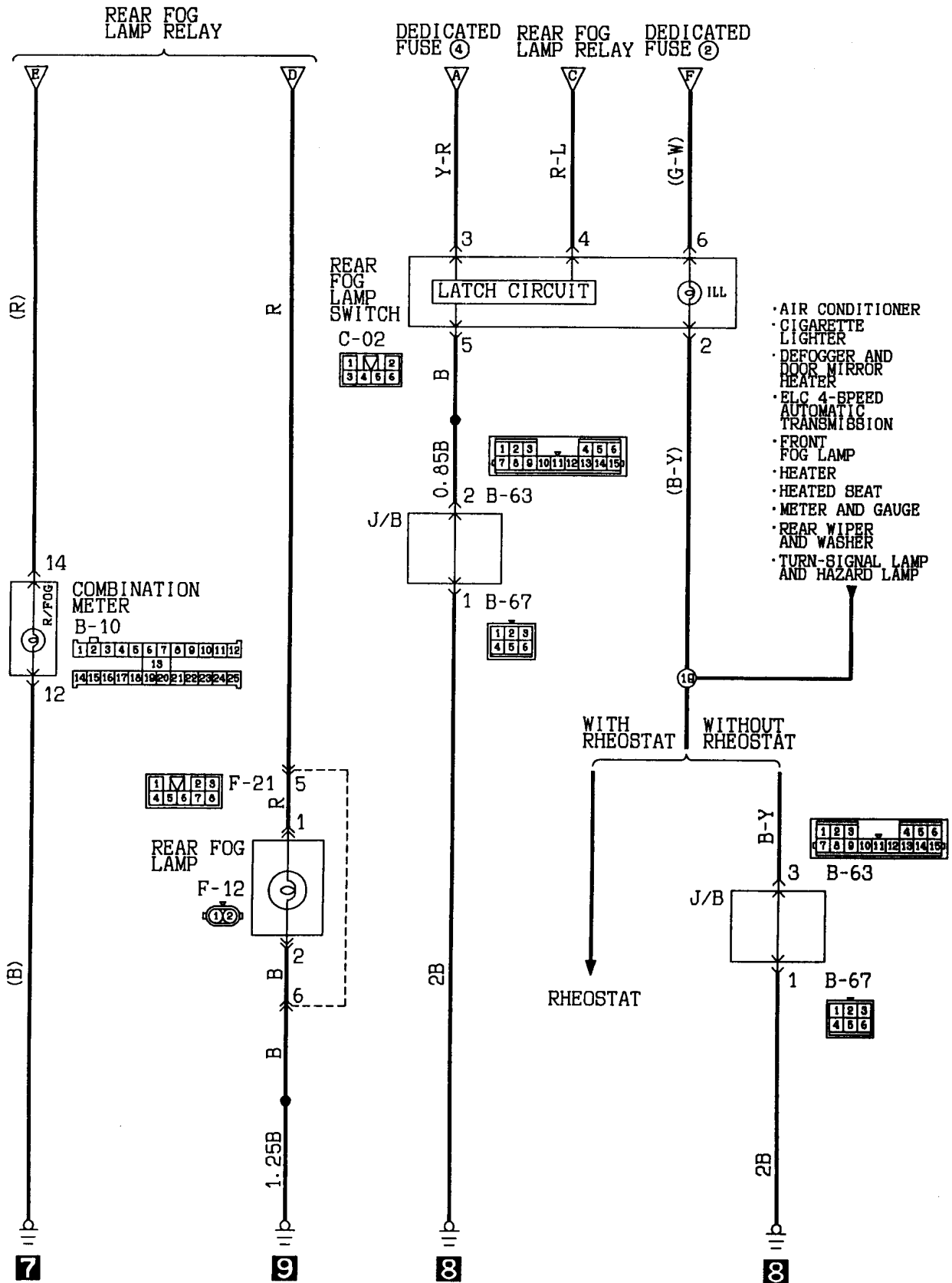
# REAR FOG LAMP

L.H. drive vehicles

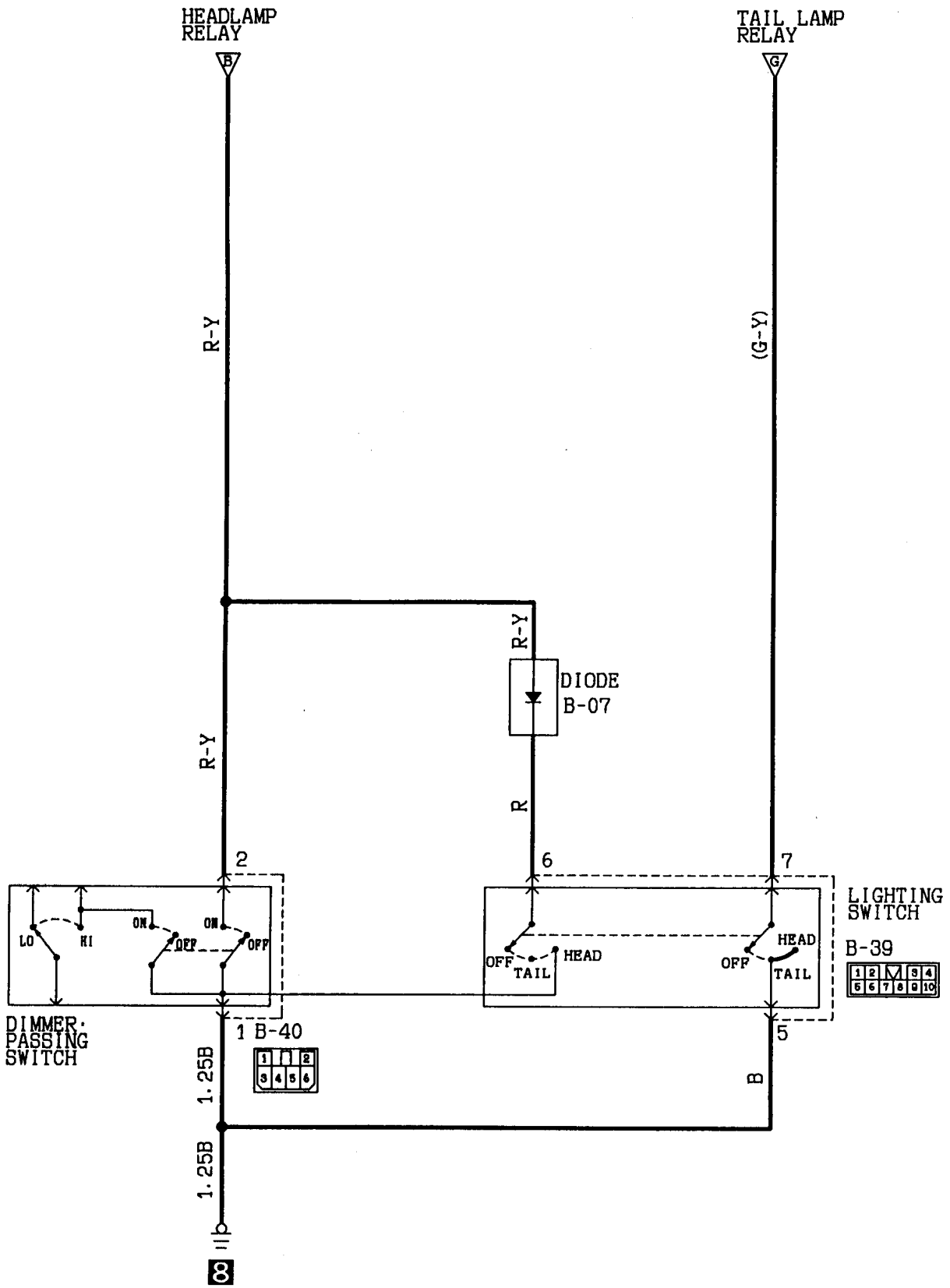




Wire colour code  
 B:Black LG:Light green G:Green L:Blue W:White Y:Yellow SB:Sky blue  
 BR:Brown O:Orange GR:Gray R:Red P:Pink V:Violet

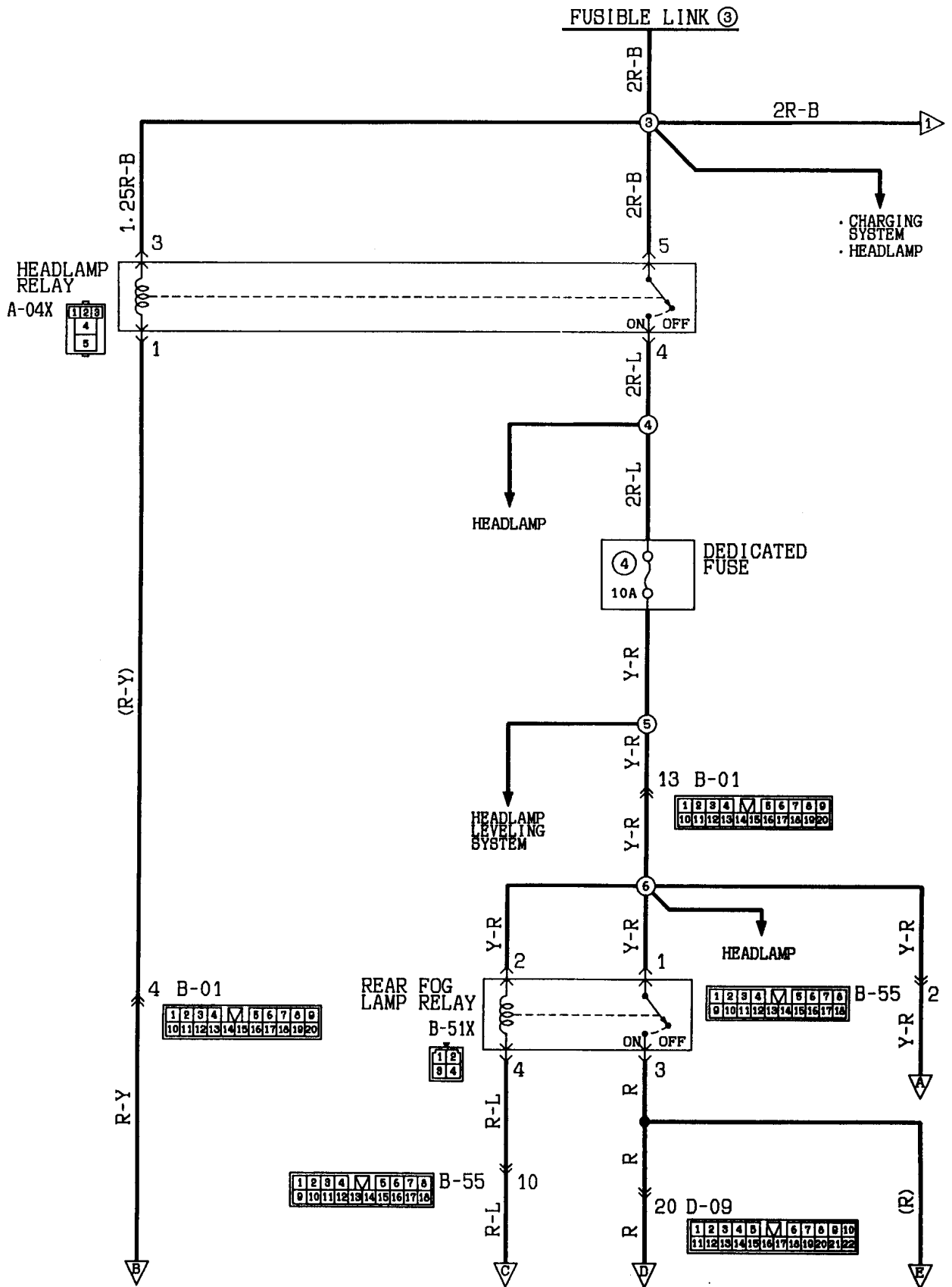


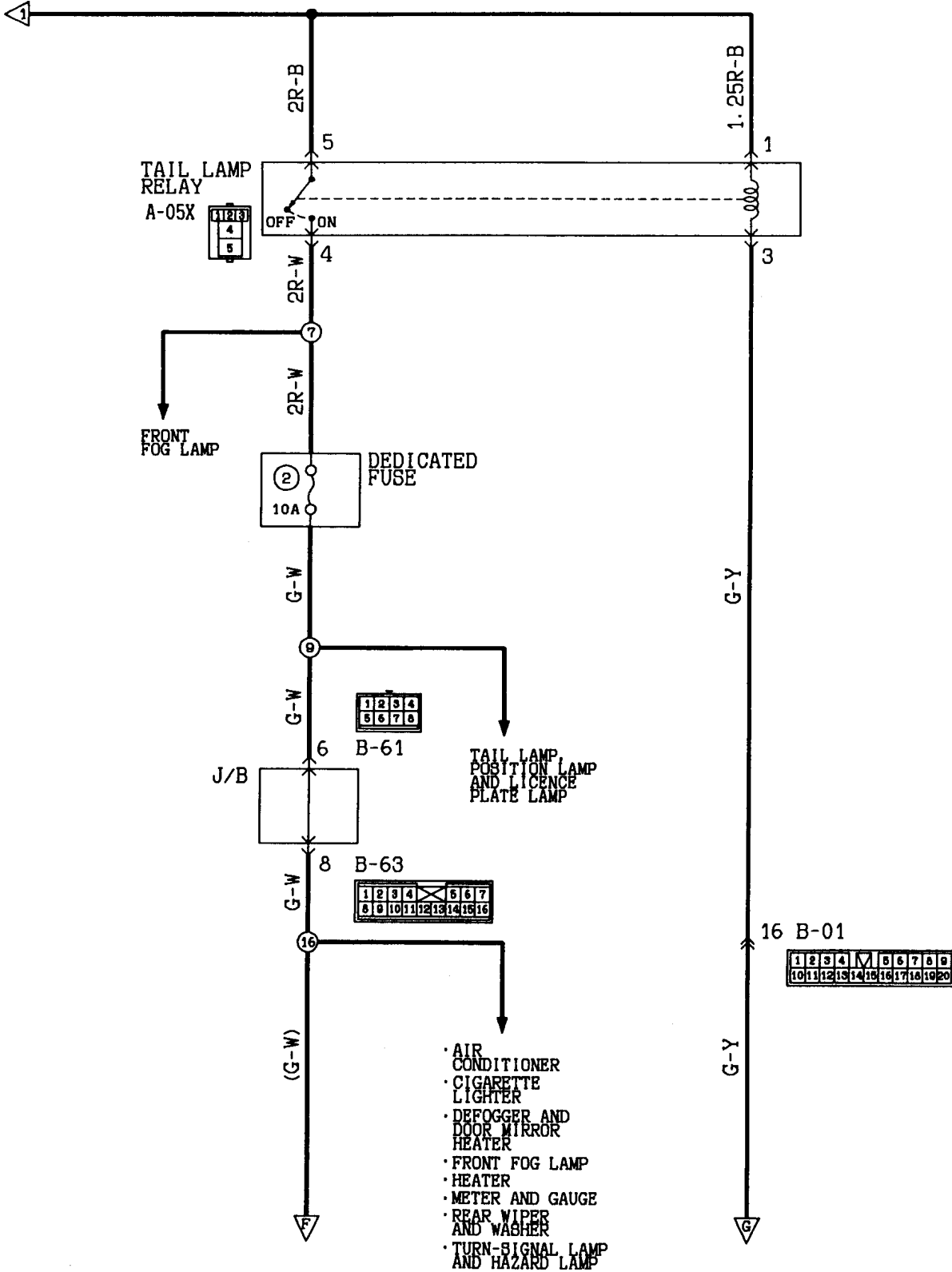
Wire colour code  
 B:Black    LG:Light green    G:Green    L:Blue    W:White    Y:Yellow    SB:Sky blue  
 BR:Brown    O:Orange    GR:Gray    R:Red    P:Pink    V:Violet



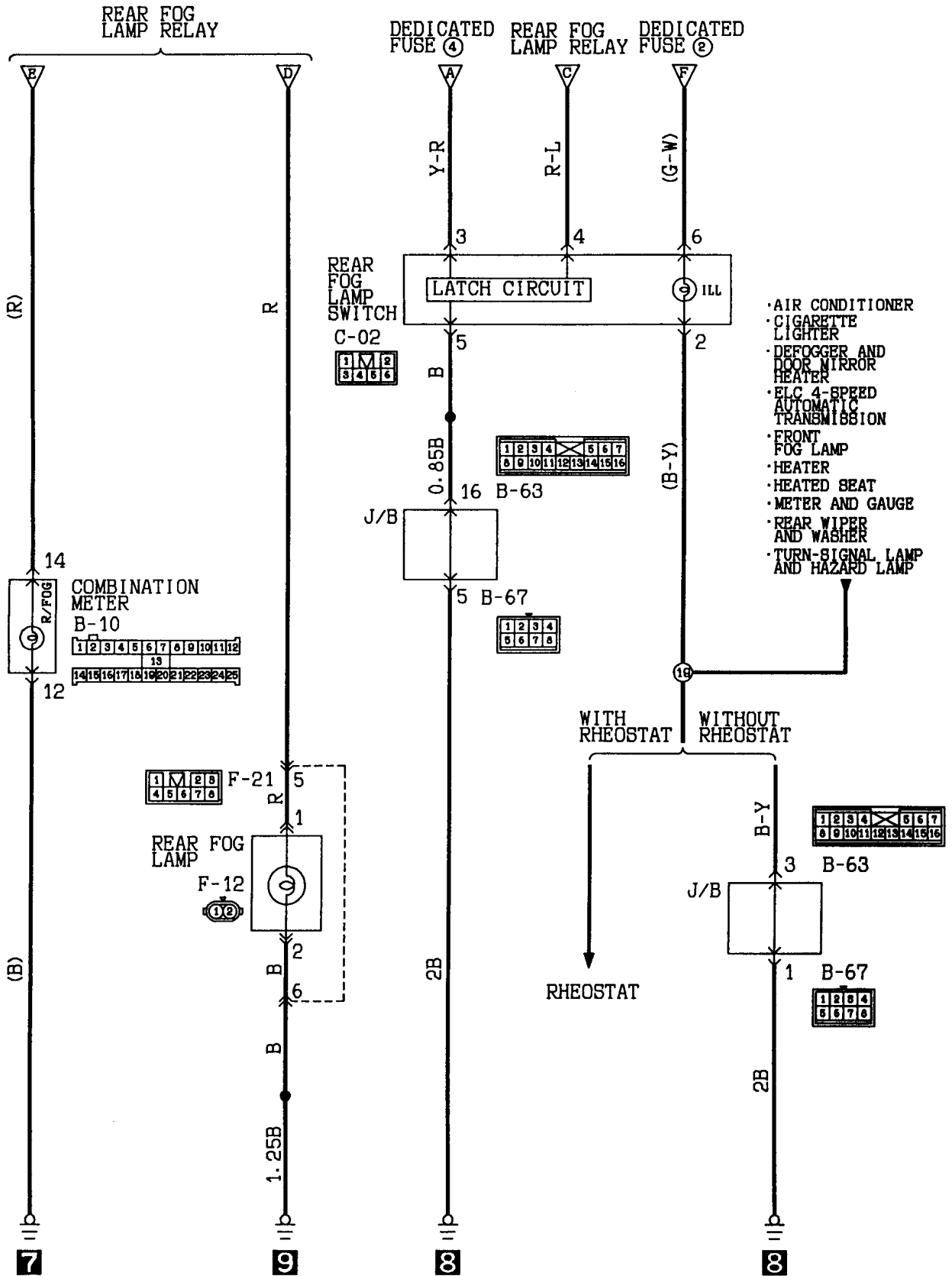
# REAR FOG LAMP

R.H. drive vehicles





Wire colour code  
 B:Black LG:Light green G:Green L:Blue W:White Y:Yellow 8B:Sky blue  
 BR:Brown O:Orange GR:Gray R:Red P:Pink V:Violet



Wire colour code  
 B:Black    LG:Light green    G:Green    L:Blue    W:White    Y:Yellow    8B:Sky blue  
 BR:Brown    O:Orange    GR:Gray    R:Red    P:Pink    V:Violet

