
POWER PLANT MOUNT

CONTENTS

32109000080

GENERAL INFORMATION	2	TRANSMISSION MOUNTING	5
SERVICE SPECIFICATION	2	ENGINE ROLL STOPPER, CENTERMEMBE	7
SPECIAL TOOLS	3	CROSSMEMBER	8
ENGINE MOUNTING	3		

|



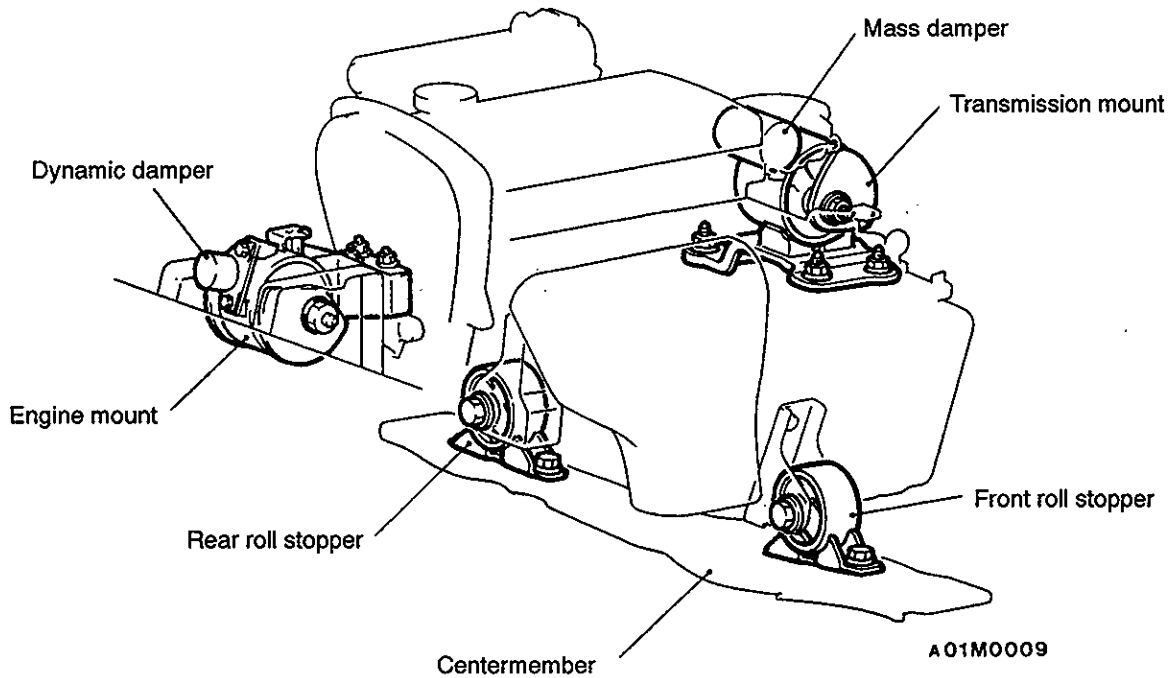
GENERAL INFORMATION

32100010099

The engine-transmission mount is of an inertial axis supporting type whose excellent features have already been proven in many Mitsubishi vehicles. The inertial axis supporting type mount supports

the front upper part of the engine at the front and the rear upper part of the transmission at the rear. This arrangement effectively suppresses the engine vibration.

CONSTRUCTION DIAGRAM



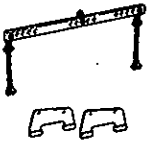
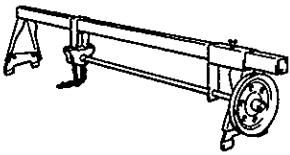
SERVICE SPECIFICATION

32100030064

Item	Standard value
Protruding length of stabilizer bar mounting bolt mm	22

SPECIAL TOOLS

32100060087

Tool	Number	Name	Use
	MB991453	Engine hanger	To support the engine assembly during removal and installation of the transmission mount
	GENERAL SERVICE TOOL MZ203827	Engine lifter	

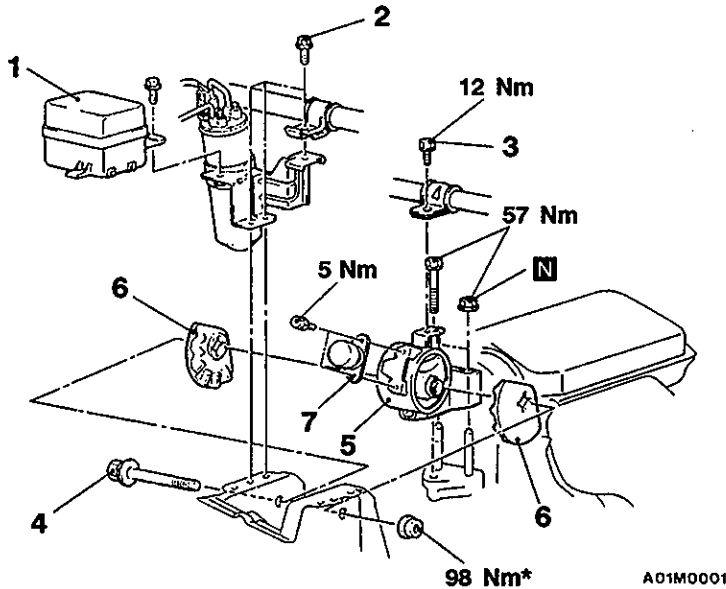
ENGINE MOUNTING

32100110119

REMOVAL AND INSTALLATION

Pre-removal Operation

- Jack Up the Engine and Transmission Assembly Until There is no Weight on the Engine Mount Bracket Insulator.

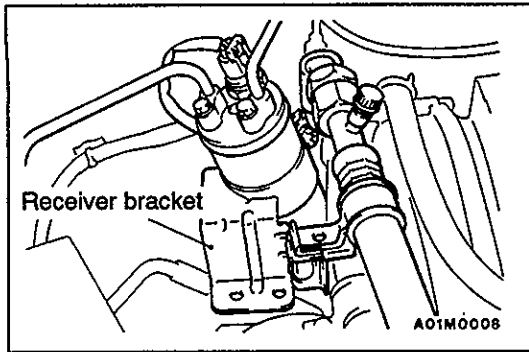


Removal steps

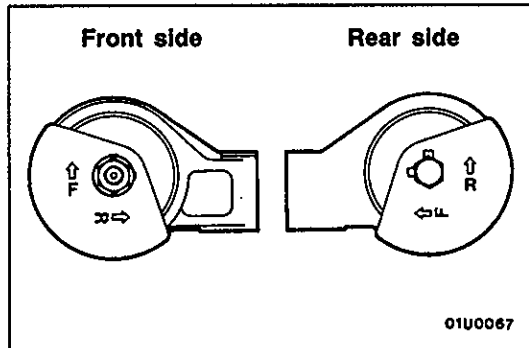
- ◀A▶ 1. Air conditioner relay box
- ◀A▶ 2. Air conditioner receiver bracket mounting bolts
- ◀A▶ 3. Power steering hose mounting bolt
- ◀A▶ 4. Engine mount insulator mounting bolt
- ▶A◀ 5. Engine mount bracket
- ▶A◀ 6. Engine mount stopper
- ▶A◀ 7. Engine mount dynamic damper

Caution

Mounting locations marked by * should be provisionally tightened, and then fully tightened when the body is supporting the full weight of the engine.

**REMOVAL SERVICE POINT****◀▶ ENGINE MOUNT INSULATOR MOUNTING BOLT / AIR CONDITIONER RECEIVER BRACKET MOUNTING BOLT REMOVAL**

- (1) To make it easier to remove the engine mount insulator mounting bolt in vehicles with air-conditioner, remove the air-conditioner receiver bracket and support the receiver so that there are no bends in the pipe.
- (2) Remove the engine mount insulator mounting bolt.

**INSTALLATION SERVICE POINT****▶◀ ENGINE MOUNT STOPPER INSTALLATION**

- (1) At the front, install so that the arrow with the "F" mark is facing upwards.
- (2) At the rear, install so that the arrow with the "R" mark is facing upwards.

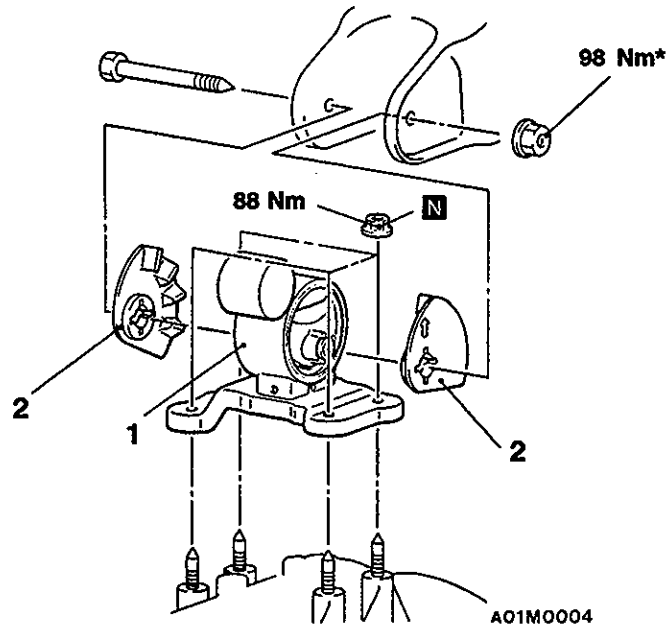
TRANSMISSION MOUNTING

32100140095

REMOVAL AND INSTALLATION

Pre-removal and Post-installation Operation

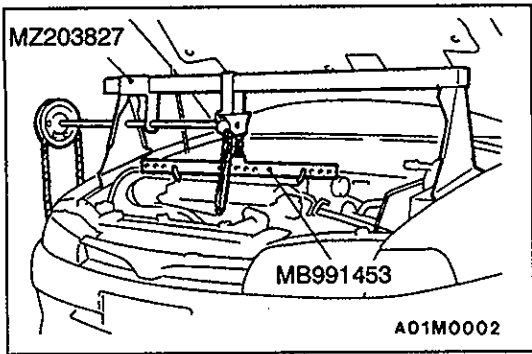
- Air Cleaner Assembly Installation and Removal
- Battery and Battery Tray Removal and Installation

**Removal steps**

- Centermember mounting bolt (Refer to P.32-7.)
1. Transmission mount bracket
 2. Transmission mount stopper

**Caution**

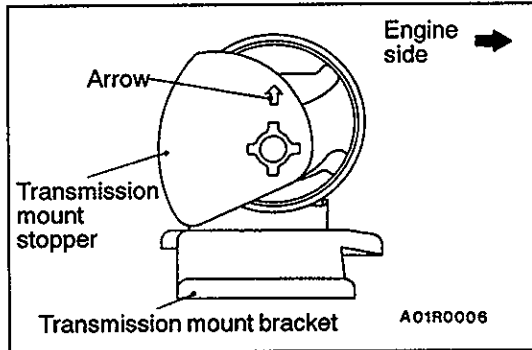
Mounting locations marked by * should be provisionally tightened, and then fully tightened when the body is supporting the full weight of the engine.



REMOVAL SERVICE POINT

◀A▶ TRANSMISSION MOUNT BRACKET REMOVAL

- (1) Install the special tool to the vehicle body to support the engine and transmission assembly.
- (2) Remove the centermember mounting bolt.
- (3) Remove the bolt and nut of the transmission mount bracket.
- (4) After lowering the engine and transmission assembly, remove the transmission mount bracket.



INSTALLATION SERVICE POINT

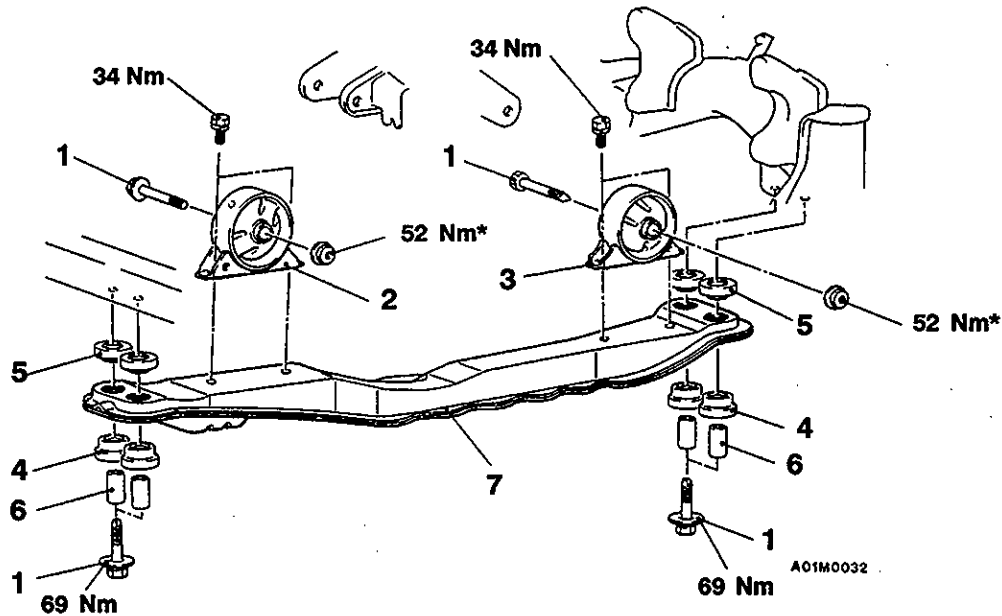
▶A◀ TRANSMISSION MOUNT STOPPER INSTALLATION

Clamp the transmission mount stopper so that the arrow points in the direction as shown in the diagram.

ENGINE ROLL STOPPER, CENTERMEMBER

32100200083

REMOVAL AND INSTALLATION



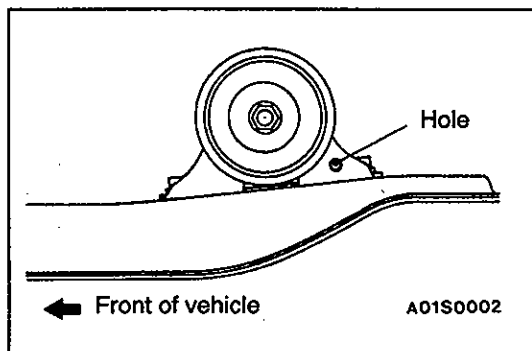
Removal steps



1. Bolts
2. Front roll stopper bracket assembly
3. Rear roll stopper bracket assembly
4. Bushing (lower)
5. Bushing (upper)
6. Collar
7. Centermember

Caution

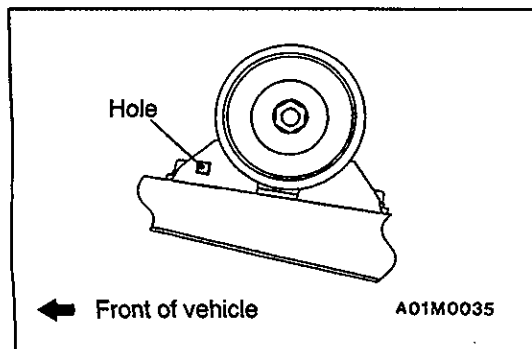
Mounting locations marked by * should be provisionally tightened, and then fully tightened when the body is supporting the full weight of the engine.



INSTALLATION SERVICE POINTS

►A◄ REAR ROLL STOPPER BRACKET ASSEMBLY INSTALLATION

Install so that the hole in the rear roll stopper bracket is facing towards the rear of the vehicle.



►B◄ FRONT ROLL STOPPER BRACKET ASSEMBLY INSTALLATION

Install so that the hole in the front roll stopper bracket is facing towards the front of the vehicle.

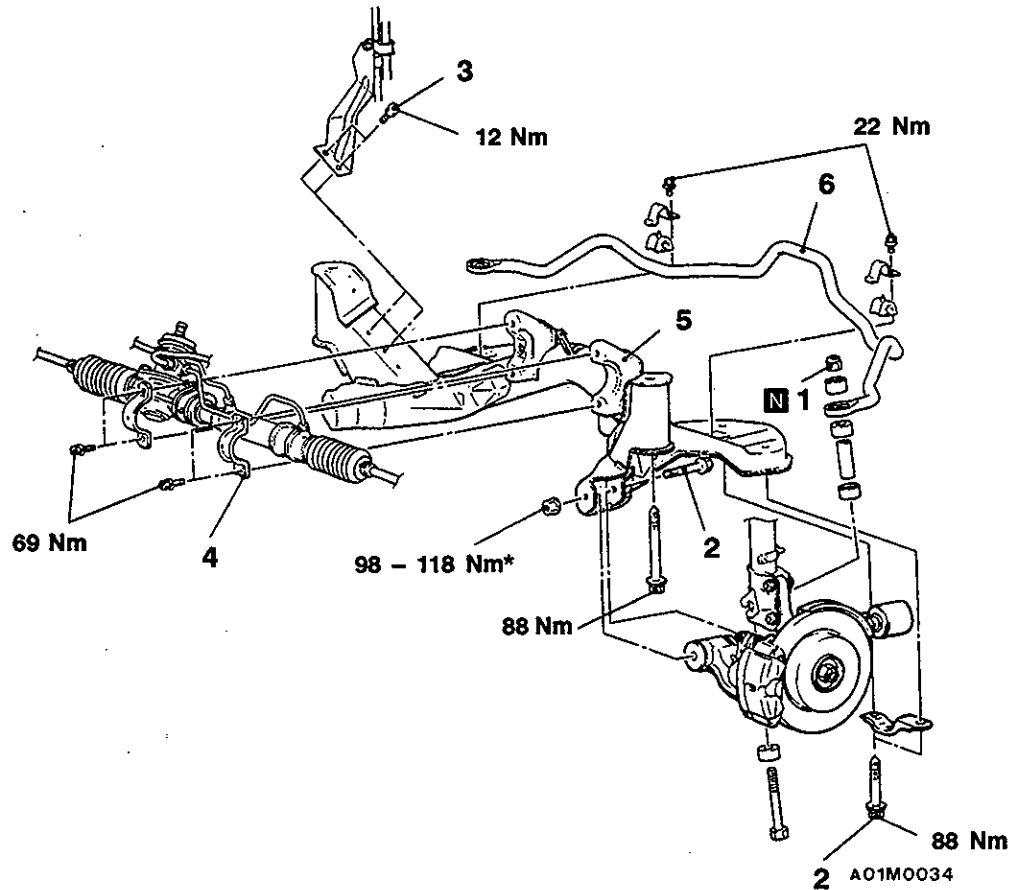
CROSSMEMBER

32100320086

REMOVAL AND INSTALLATION

Pre-removal and Post-Installation Operation

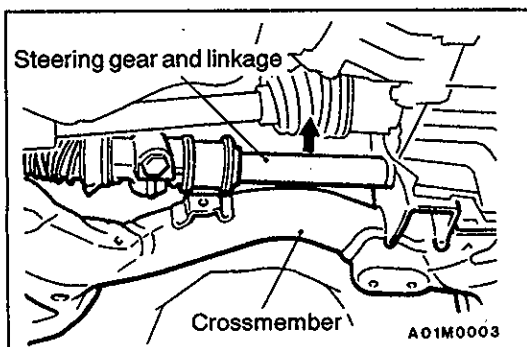
- Front Exhaust Pipe Removal and Installation (Refer to GROUP 15.)
- Centermember Assembly Removal and Installation (Refer to P.32-7.)

**Removal steps**

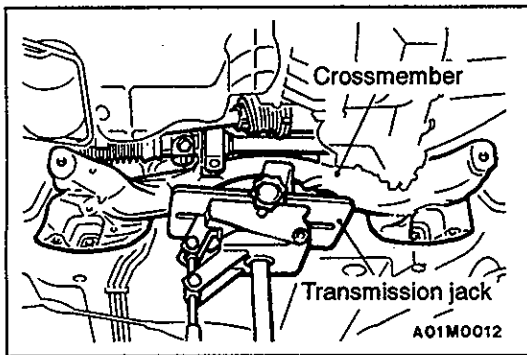
- ▶A◀ 1. Self-locking nut
 2. Lateral lower arm mounting bolts
 3. Oil return pipe clamp mounting bolts
 4. Steering gear and linkage clamp
 ▶A▶ ▶B▶ 5. Crossmember assembly
 ▶B▶ 6. Stabilizer bar

Caution

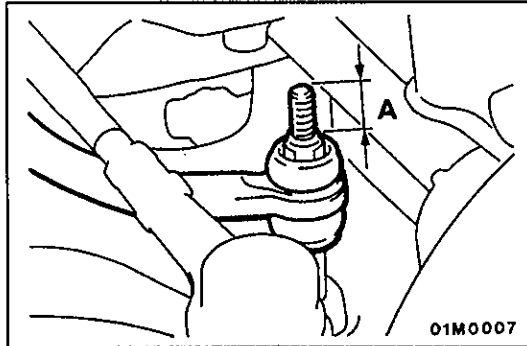
*: Indicates parts which should be temporarily tightened, and then fully tightened with the vehicle on the ground in the unladen condition.

**REMOVAL SERVICE POINT****▶A▶ CROSSMEMBER ASSEMBLY REMOVAL**

- (1) Move the crossmember while supporting the steering gear and linkage in the direction shown by the arrow.



- (2) Remove the crossmember while supporting it with a transmission jack.

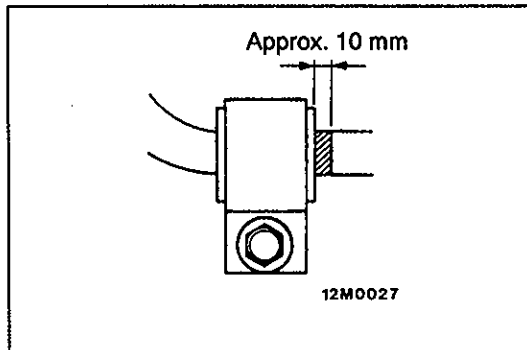


INSTALLATION SERVICE POINTS

▶A◀ SELF-LOCKING NUT INSTALLATION

Tighten the self-locking nut so that the amount of protrusion of the end of the stabilizer bar mounting bolts is at the standard value.

Standard value (A): 22 mm



▶B◀ STABILIZER BAR INSTALLATION

Place the identification mark of the stabilizer bar to the left, and install the bushing so that the identification mark protrudes approximately 10 mm from the edge of the inside of the bushing.

NOTES