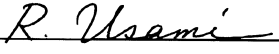




SERVICE BULLETIN

QUALITY INFORMATION ANALYSIS
OVERSEAS SERVICE DEPT. MITSUBISHI MOTORS CORPORATION

SERVICE BULLETIN		No.: MSB-97E55-501							
		Date: 1997-07-15	<table border="1"> <tr> <td><Model></td> <td><M/Y></td> </tr> <tr> <td>COLT(CJ0A)</td> <td>96-10</td> </tr> <tr> <td>LANCER(CK0A)</td> <td>96-10</td> </tr> </table>	<Model>	<M/Y>	COLT(CJ0A)	96-10	LANCER(CK0A)	96-10
<Model>	<M/Y>								
COLT(CJ0A)	96-10								
LANCER(CK0A)	96-10								
Subject: RECTIFYING OMISSIONS AND ERRORS IN EVAPORATOR INSTALLATION AND REMOVAL									
Group: HEATER, A/C & VENTILATION	Draftno: 96-TA-020								
CORRECTION	OVERSEAS SERVICE DEPT	 R. USAMI - MANAGER QUALITY INFORMATION ANALYSIS							

1. Description:

This Service Bulletin informs you tht omissions and errors have been rectified in installation and removal of the evaporator for the RH drive car.

2. Applicable Manuals:

Manual	Pub. No.	Language	Page(s)
'96 COLT/LANCER Workshop Manual Chassis	PWME9511	(English)	55-26, 27
	PWMS9512	(Spanish)	
	PWMF9513	(French)	
	PWMG9514	(German)	
	PWMD9515	(Dutch)	
	PWMW9516	(Swedish)	

3. Details:

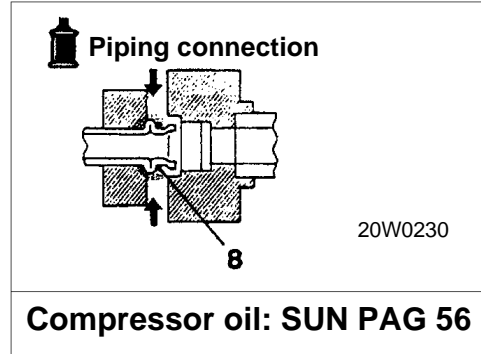
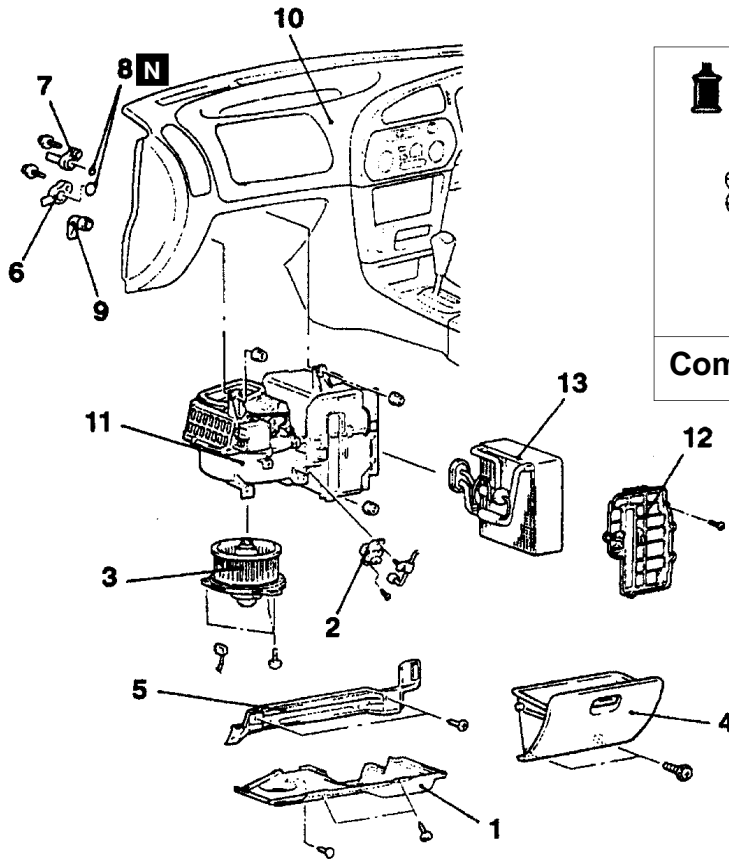
'96 COLT/LANCER Workshop Manual Page 55-26
'96 COLT/LANCER Workshop Manual Page 55-27.

EVAPORATOR, BLOWER UNIT AND RESISTOR <R.H. DRIVE VEHICLES WITH A/C>

REMOVAL AND INSTALLATION

Caution: SRS

When removing and installing the floor console assembly from vehicles equipped with SRS, do not let it bump against the SRS-ECU or the components



20M0062

00004591

Resistor removal steps

1. Under cover
2. Resistor

Blower fan and motor removal steps

1. Under cover
3. Blower Fan and motor

Evaporator and blower unit removal steps

1. Under cover
4. Glove box
5. Glove box frame
- Discharging and charging of refrigerant (Refer to P.55-9.)
- Air cleaner cover and air intake hose
6. Suction hose connection
7. Discharge pipe connection

8. O-ring
9. Drain hose
10. Instrument panel (Refer to GROUP 52A.)
11. Evaporator and blower unit

Evaporator removal steps

1. Under cover
4. Glove box
5. Glove box frame
- Discharging and charging of refrigerant (Refer to P.55-9.)
- Air cleaner cover and air intake hose
6. Suction hose connection
7. Discharge pipe connection
8. O-ring
12. Case cover (Service part)
13. Evaporator

◀A▶
◀A▶

◀A▶

◀A▶

◀B▶

◀B▶

<Added>

▶B◀

▶A◀

<Added>

REMOVAL SERVICE POINTS

◀A▶ SUCTION HOSE, DISCHARGE PIPE DISCONNECTION

Plug the disconnected hose and the evaporator nipple not to let foreign matter get into them.

Caution

Seal the hoses completely, otherwise the compressor oil and receiver will absorb water vapour easily

<Correct>

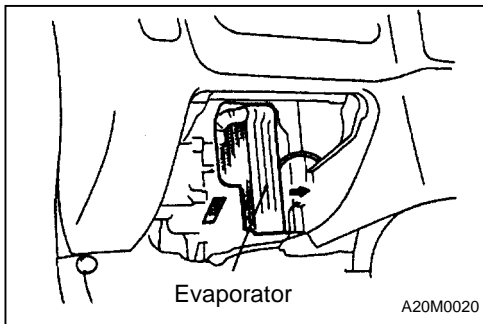
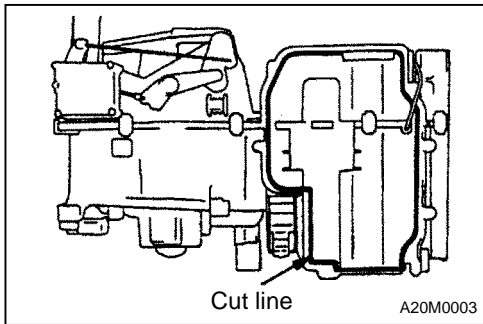
◀B▶

<Incorrect>

▶B▶ CASE COVER, EVAPORATOR REMOVAL

The evaporator, which has been installed in a factory, has no case cover. Follow the steps below to remove that evaporator.

1. Cut the case along the shown line to remove the cooling and blower unit
2. Remove the air thermo sensor from the evaporator, and then remove the evaporator towards you, being careful not to damage its core.



INSTALLATION SERVICE POINT

▶B▶ EVAPORATOR INSTALLATION

When replacing the evaporator, refill it with a specified amount of compressor oil and install it (to the vehicle).

Compressor oil: SUN PAG 56

Quantity: 60 ml

<Correct>

▶A▶

<Incorrect>

▶B▶ CASE COVER INSTALLATION

When the evaporator has been removed for the first time, install the case cover, which is available as a service part, over the opening made by cutting the case when the evaporator is removed.

<Added>

55200370021

INSPECTION

BLOWER FAN AND MOTOR CHECK

Refer to P.55-23.

RESISTOR CHECK

Refer to P.55-23.