

# INTERIOR AND SUPPLEMENTAL RESTRAINT SYSTEM (SRS)

## CONTENTS

52109000187

INTERIOR ..... 52A

SUPPLEMENTAL RESTRAINT SYSTEM (SRS) ..... 52B

# INTERIOR

## CONTENTS

52109000224

ADHESIVE .....	3	INSTRUMENT PANEL* .....	8
FLOOR CONSOLE* .....	11	REAR SEAT .....	22
FRONT SEAT .....	20	REAR SEAT BELT .....	26
FRONT SEAT BELT .....	25	SPECIAL TOOLS .....	3
GENERAL INFORMATION .....	3	TRIMS .....	13
HEADLINING .....	17	TROUBLESHOOTING .....	4
INSIDE REAR VIEW MIRROR .....	19		

### WARNINGS REGARDING SERVICING OF SUPPLEMENTAL RESTRAINT SYSTEM (SRS) EQUIPPED VEHICLES

#### WARNING!

- (1) Improper service or maintenance of any component of the SRS, or any SRS-related component, can lead to personal injury or death to service personnel (from inadvertent firing of the air bag) or to the driver and passenger (from rendering the SRS inoperative).
- (2) Service or maintenance of any SRS component or SRS-related component must be performed only at an authorized MITSUBISHI dealer.
- (3) MITSUBISHI dealer personnel must thoroughly review this manual, and especially its GROUP 52B - Supplemental Restraint System (SRS) and GROUP 00 - Maintenance Service, before beginning any service or maintenance of any component of the SRS or any SRS-related component.

#### NOTE

The SRS includes the following components: SRS air bag control unit, SRS warning light, air bag module, clock spring, and interconnecting wiring. Other SRS-related components (that may have to be removed/installed in connection with SRS service or maintenance) are indicated in the table of contents by an asterisk (\*).

# GENERAL INFORMATION

52300010024

## OPERATION

### Seat belt warning buzzer

- When the ignition switch is turned ON, the decision circuit operates and the seat belt warning light inside of the combination meter flashes four times for 6 seconds.
- The decision circuit output makes the seat belt warning buzzer sound intermittently for 6 seconds to indicate unfastening of the seat belt.
- When the seat belt is buckled (seat belt buckle switch is turned OFF), the seat belt warning buzzer stops sounding. When the ignition switch is turned OFF, both seat belt warning light and buzzer do not operate.

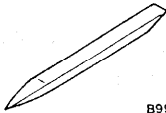

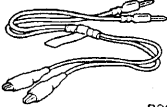
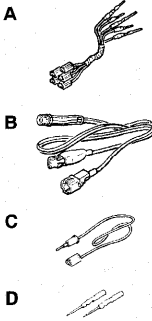
## ADHESIVE

52100050037

Item	Specified adhesive
Roof pad <Vehicles without sunroof>	3M Part No.EC-1368 or equivalent

## SPECIAL TOOLS

52100060139

Tool	Tool number and name	Supersession	Application
	MB990784 Ornament remover	General service tool	Removal of switch, trim, etc.
	MB991502 Scan tool (MUT-II)	MB991496-OD	ETACS-ECU input signal checking
	MB991529 Diagnostic trouble code check harness	Tool not necessary if scan tool <MUT-II> is available	ETACS-ECU input signal checking (when using the voltmeter)
	MB991223 Harness set A: MB991219 Test harness B: MB991220 LED harness C: MB991221 LED harness adapter D: MB991222 Probe	MB991223	Measurement of terminal voltage A: Connector pin contact pressure inspection B, C: Power circuit inspection D: Commercial tester connection

## TROUBLESHOOTING

## DIAGNOSTIC FUNCTION

INPUT SIGNAL INSPECTION POINTS  
<VEHICLES WITH ETACS-ECU>

## When Using the Scan Tool

1. Connect the scan tool to the data link connector.

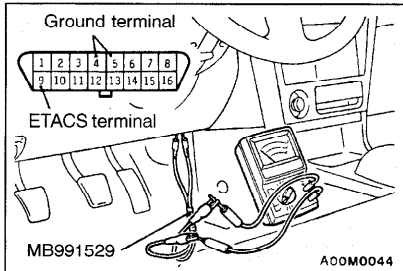
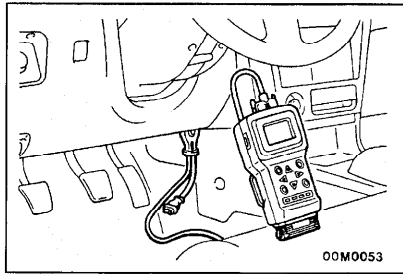
**Caution**

The scan tool should be connected or disconnected after turning the ignition switch to the OFF position.

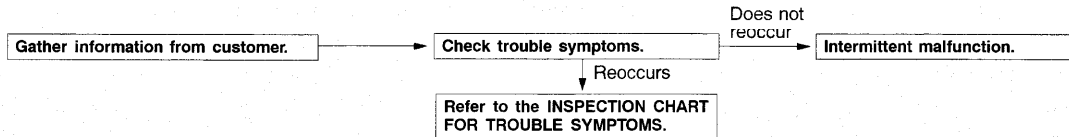
2. If buzzer of the scan tool sounds once when the front seat belt buckle switch is operated (ON/OFF), the ETACS-ECU input signal for that switch circuit system is normal.

## When Using the Voltmeter

1. Use the special tool to connect a voltmeter between the ground terminal and the ETACS terminal of the data link connector.
2. If the voltmeter indicator deflects once when the front seat belt buckle switch is operated (ON/OFF), the ETACS-ECU input signal for that switch circuit system is normal.



## STANDARD FLOW OF DIAGNOSTIC TROUBLESHOOTING



## INSPECTION CHART FOR TROUBLE SYMPTOM

Trouble symptom		Inspection procedure No.	Reference page
Communication with scan tool is not possible. <Vehicles with ETACS-ECU>	Communication with all systems is not possible.	1	52A-5
	No communication with switch signal input.	2	52A-5
When the seat belts are not fastened and the ignition switch is turned to the ON position, the seat belt warning buzzer does not sound and the seat belt warning light does not illuminate nor flash.		3	52A-5
When the seat belts are not fastened and the ignition switch is turned to the ON position, the seat belt warning light illuminates or flashes, but the seat belt warning buzzer does not sound.		4	52A-6
When the seat belts are not fastened and the ignition switch is turned to the ON position, the seat belt warning buzzer sound, but the seat belt warning light does not illuminate nor flash.		5	52A-7
After having the ignition switch turned to the ON position, the seat belt warning buzzer does not stop sounding for six seconds, even though the seat belt is buckled immediately.		Refer to inspection procedure No.4	52A-6

**INSPECTION PROCEDURE FOR TROUBLE SYMPTOMS**

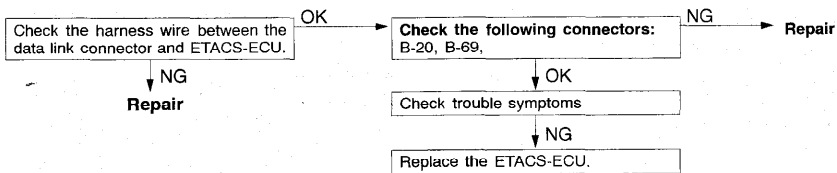
**INSPECTION PROCEDURE 1**

<p><b>Communication with scan tool is not possible. (Communication with all systems is not possible.)</b></p>	<p><b>Probable cause</b></p>
<p>The cause is probably in the defective power supply system (including ground) for the diagnostic line.</p>	<ul style="list-style-type: none"> <li>• Malfunction of wiring harnesses or connectors</li> </ul>

Refer to GROUP 13A - Troubleshooting

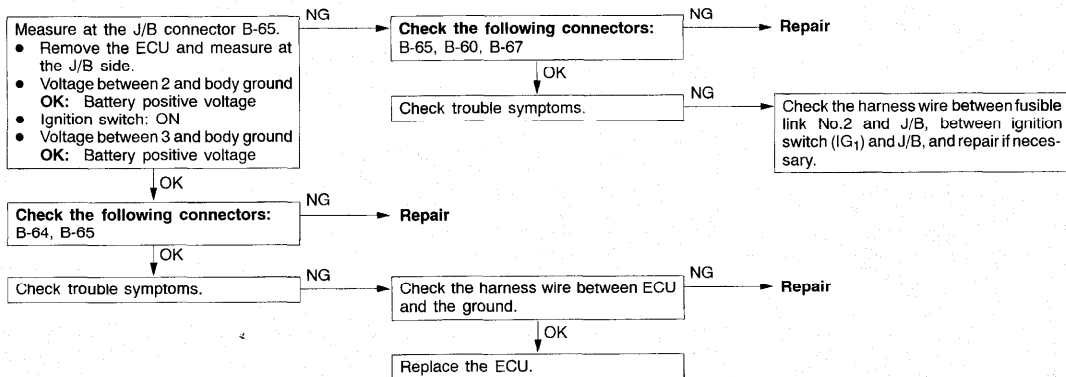
**INSPECTION PROCEDURE 2**

<p><b>Communication with scan tool is not possible. (No communication with switch signal input.)</b></p>	<p><b>Probable cause</b></p>
<p>The cause is probably a defective one-shot pulse input circuit system of the diagnostic line.</p>	<ul style="list-style-type: none"> <li>• Malfunction of ETACS-ECU</li> <li>• Malfunction of wiring harnesses or connectors</li> </ul>



**INSPECTION PROCEDURE 3**

<p><b>When the seat belts are not fastened and the ignition switch is turned to the ON position, the seat belt warning buzzer does not sound, and the seat belt warning light does not illuminate nor flash.</b></p>	<p><b>Probable cause</b></p>
<p>The cause may be a malfunction of the ECU power supply circuit system or of the ground circuit system.</p>	<ul style="list-style-type: none"> <li>• Malfunction of ECU</li> <li>• Malfunction of wiring harnesses or connectors</li> </ul>



## INSPECTION PROCEDURE 4

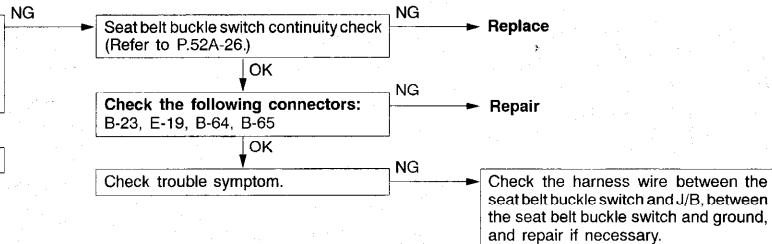
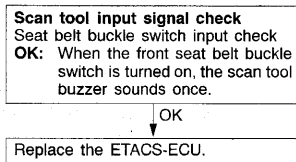
When the seat belts are not fastened and the ignition switch is turned to the ON position, the seat belt warning light illuminates or flashes, but the seat belt warning buzzer does not sound.

## Probable cause

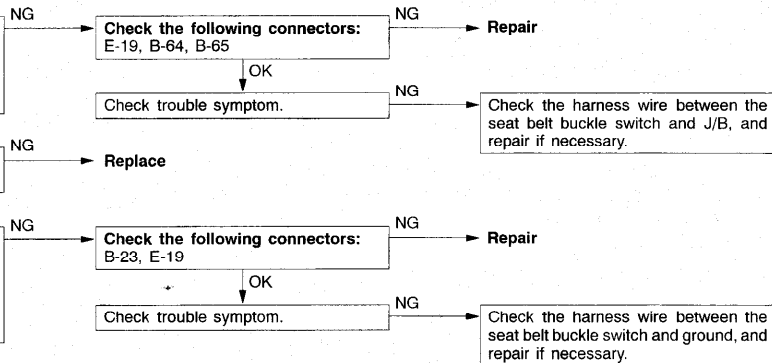
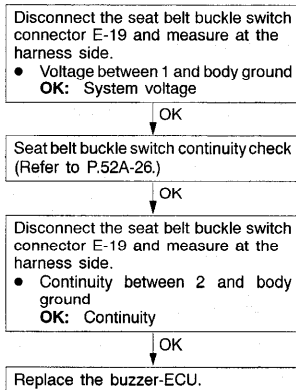
It is possible that there is a malfunction of the seat belt buckle switch circuit.

- Malfunction of seat belt buckle switch
- Malfunction of ECU
- Malfunction of harnesses or connectors

## &lt;Vehicles with ETACS-ECU&gt;



## &lt;Vehicles with buzzer-ECU&gt;



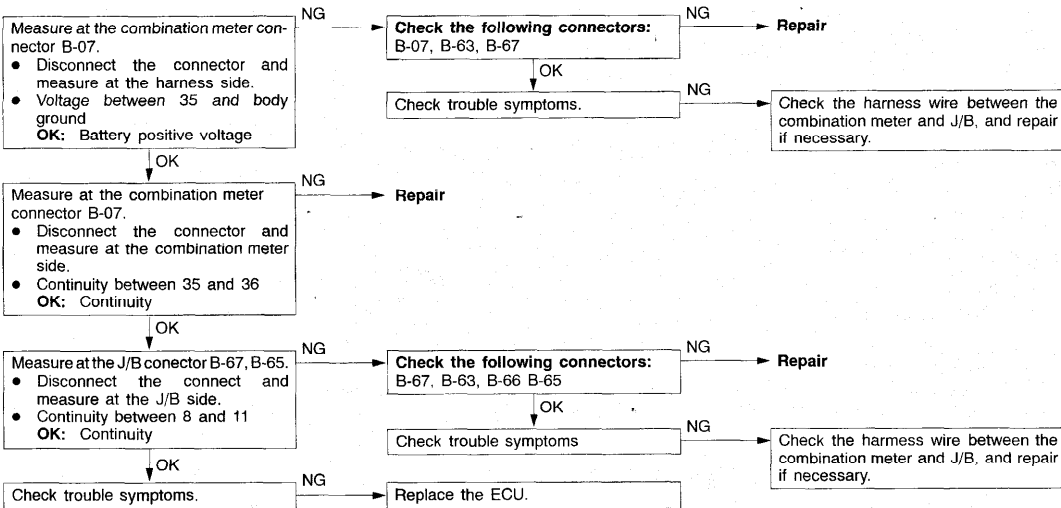
## INSPECTION PROCEDURE 5

**When the seat belts are not fastened and the ignition switch is turned to the ON position, the seat belt warning buzzer sounds, but the seat belt warning light does not illuminate nor flash.**

**Probable cause**

It is possible that there is a malfunction of the seat belt warning light circuit or ECU.

- Malfunction of bulb
- Malfunction of ECU
- Malfunction of harnesses or connectors





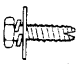



## INSTRUMENT PANEL

52100170306

## REMOVAL AND INSTALLATION

For installation of the instrument panel, the bolts and screws described below are used. They are indicated by symbols in the illustration.

Name	Symbol	Size mm (D × L)	Color	Shape	
Tapping screw	A	5 × 12	-		A00Z0010
	B	5 × 14	-		
	C	5 × 16	-		
	D	5 × 20	Black		
	E	5 × 12	-		B00Z0010
	F	5 × 16	-		
	G	5 × 20	-		
Washer-assembled screw	H	5 × 16	-		C00Z0010
	I	5 × 20	-		
Washer-assembled bolt	J	6 × 16	-		D00Z0010
	K	6 × 20	-		
	L	6 × 16	-		E00Z0010
	M	6 × 16	Black		
Self-tapping bolt	N	6 × 16	-		F00Z0010

D = Thread diameter

L = Effective thread length

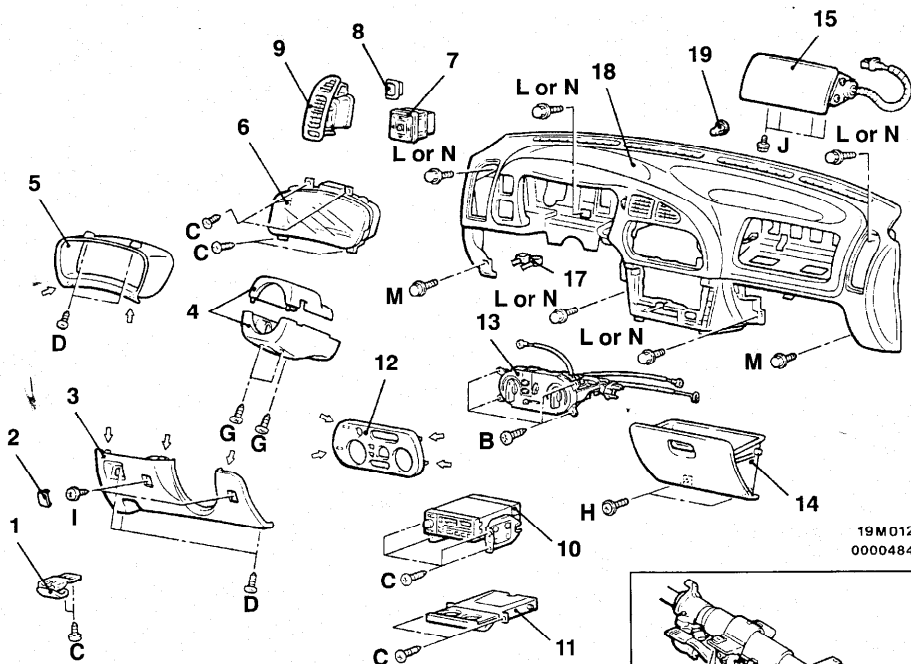


**CAUTION: SRS**

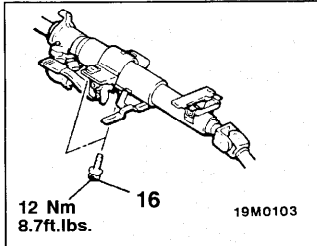
- When removing and installing the floor console, do not let it bump against the SRS-ECU.
- For the passenger side air bag module removal/installation, always observe the service procedures of GROUP 52B - Air Bag Module and Clock Spring.

**Pre-removal and Post-installation Operation**

- Floor Console Assembly Removal and Installation (Refer to P.52A-11.)



19M0129  
00004847

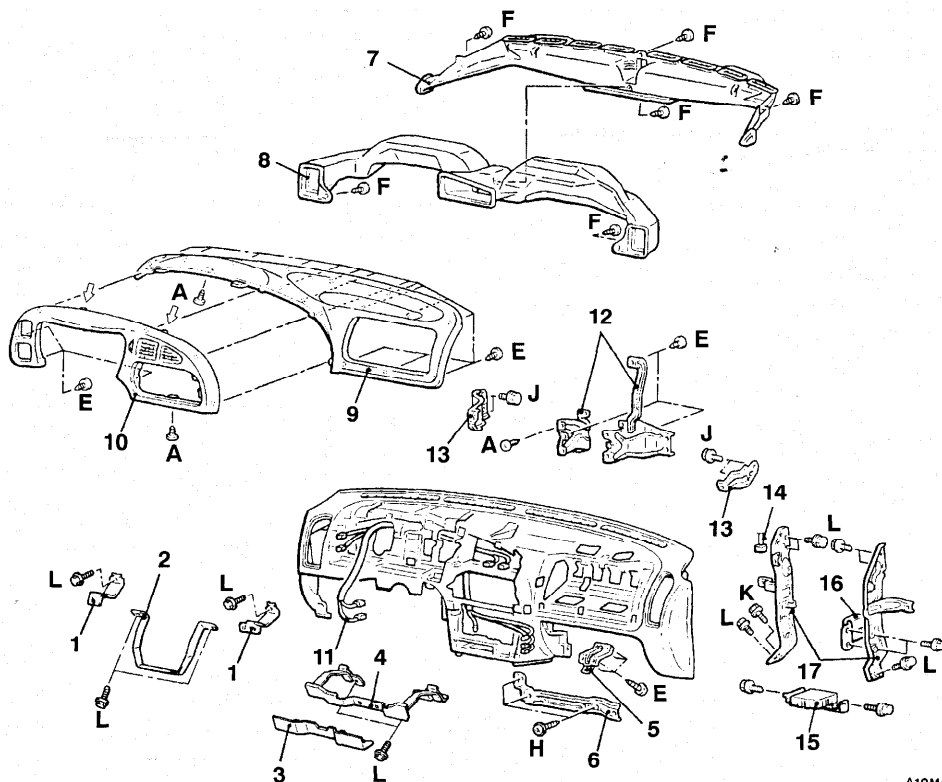


NOTE  
↙ : metal clip position

**Removal steps**

- Rheostat (Refer to GROUP 54.)
- 1. Hood lock release handle
- 2. Knee protector plug
- 3. Knee protector assembly
- 4. Column cover
- 5. Meter bezel
- 6. Combination meter
- 7. Door mirror control switch or plug
- 8. Auto-cruise control main switch, fog light switch or plug
- 9. Side air outlet assembly
- 10. Radio and tape player
- 11. Cup holder
- 12. Heater control panel
- 13. Heater control assembly (Refer to GROUP 55.)
- 14. Glove box
- 15. Front passenger's air bag module assembly
- 16. Steering column assembly installation bolt
- 17. Harness connector
- 18. Instrument panel assembly
- 19. Grommet

## DISASSEMBLY AND REASSEMBLY



A19M0130

## Disassembly steps

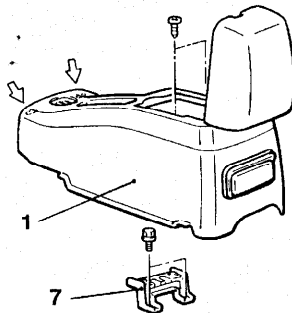
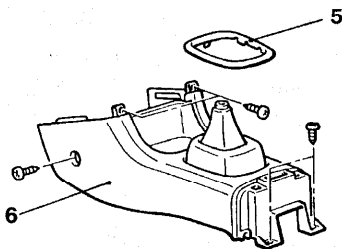
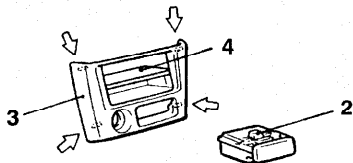
1. Stay
2. Column protector
3. Reinforcement cover
4. Bracket
5. Glove box striker
6. Glove box frame
7. Defroster nozzle assembly
8. Distribution duct
9. Instrument pad
10. Cluster panel
11. Instrument panel wiring harness
12. Instrument panel reinforcement
13. Lower bracket
14. Harness connector
15. ABS-ECU
16. Relay
17. Center reinforcement

# FLOOR CONSOLE

## REMOVAL AND INSTALLATION

**CAUTION: SRS**

When removing and installing the floor console, do not let it bump against the SRS-ECU.



**NOTE**

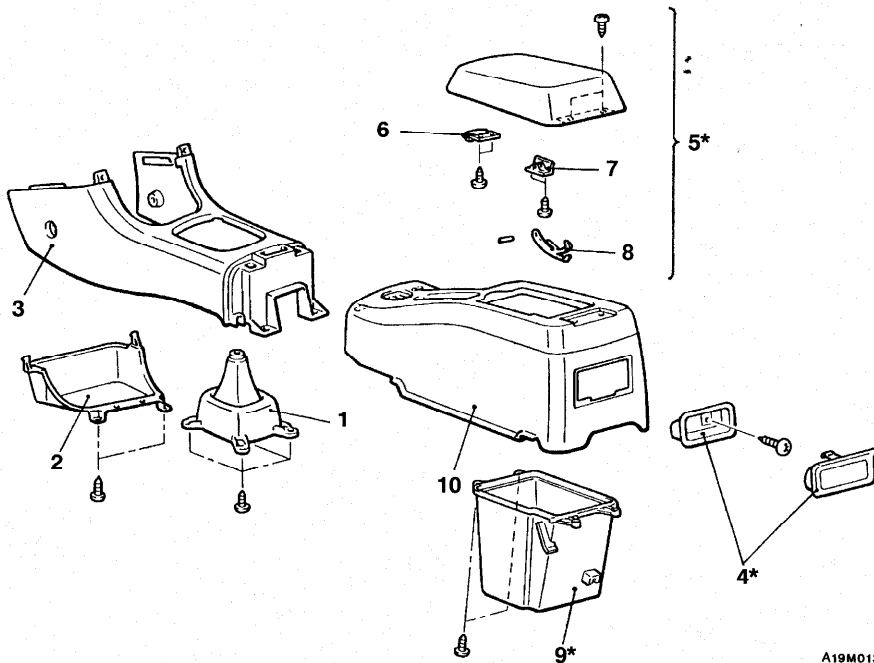
↔ : metal clip position

A19M0136

**Removal steps**

1. Rear floor console assembly
2. Ashtray
3. Audio panel
4. Box
  - Shift lever knob <M/T>  
(Refer to GROUP 22A - Transaxle Control.)
5. A/T panel
6. Front floor console assembly
7. Rear console bracket

## DISASSEMBLY AND REASSEMBLY



## NOTE

\*: Vehicles with console lid

## Disassembly steps

1. Shift lever cover <M/T>
2. Console tray
3. Front floor console
4. Ashtray
5. Console lid assembly

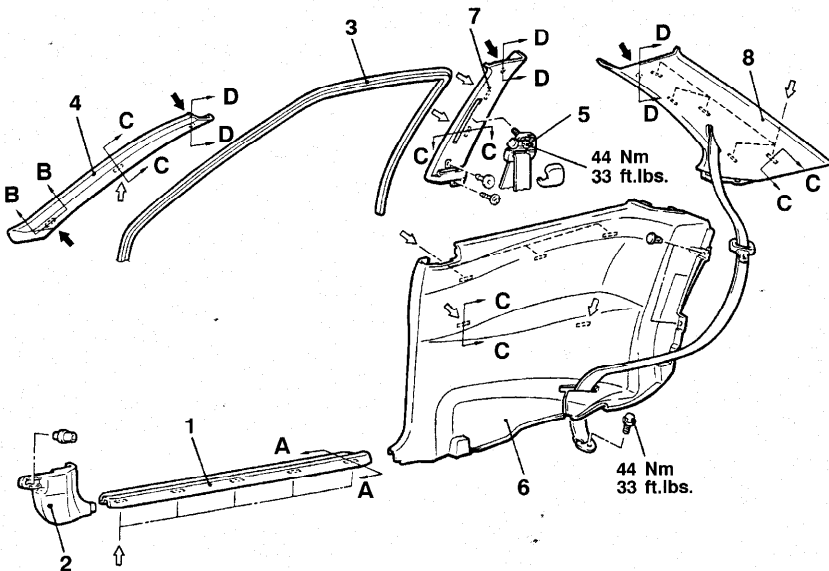
6. Lock lever
7. Cover
8. Stopper
9. Cover box
10. Rear floor console

A19M0137

**TRIMS**

**REMOVAL AND INSTALLATION**

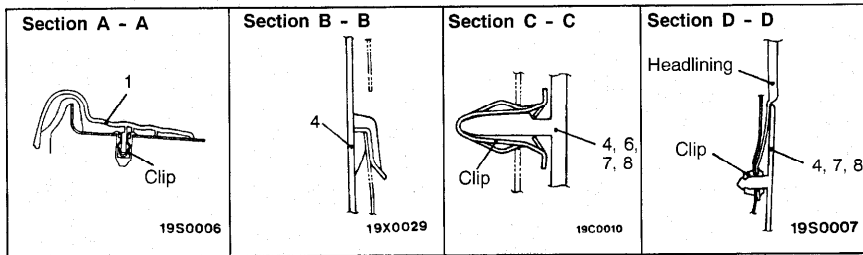
<2-door models>



19M0134  
0004848

**NOTE**

- ◁ : Metal clip position
- ◄ : Resin clip position



**Cowl side trim removal steps**

1. Scuff plate
2. Cowl side trim

**Front pillar trim removal steps**

3. Door inner opening weatherstrip
4. Front pillar trim

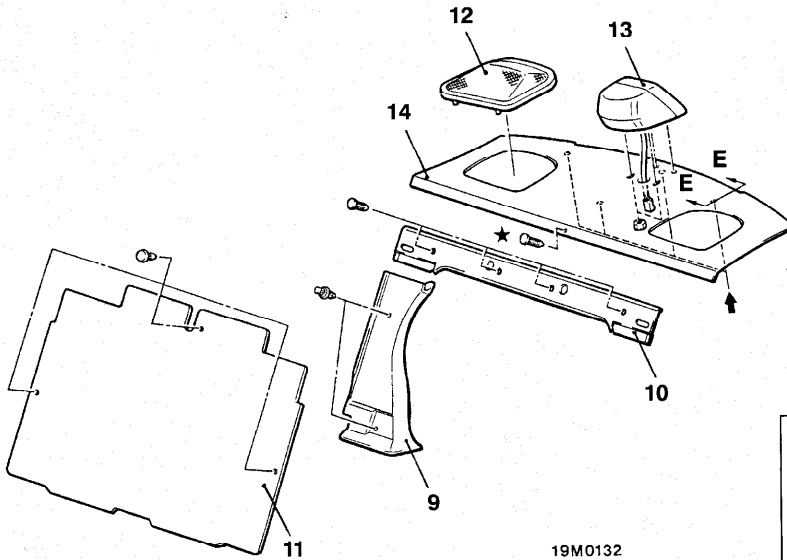
**Center pillar trim, rear pillar trim and quarter trim removal steps**

- Rear seat assembly (Refer to P.52A-22.)

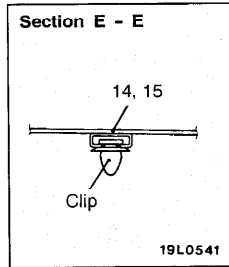
  1. Scuff plate
  3. Door inner opening weatherstrip
  5. Sash guide
  6. Quarter trim
  7. Center pillar trim

- Rear shelf trim (Refer to P.52A-14.)

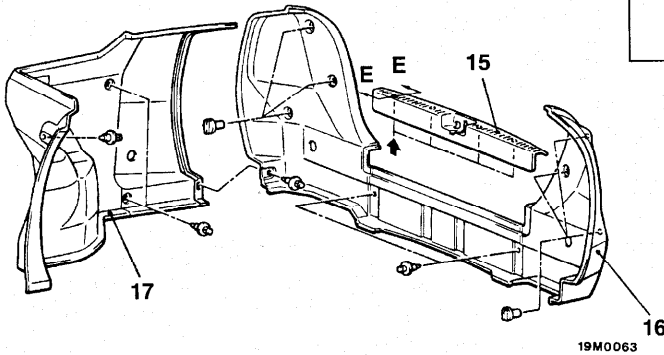
  8. Rear pillar trim



19M0132

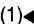


19L0541



19M0063

**NOTE**

- (1)  : Resin clip position  
 (2) Clips marked with ★ are used on vehicles with split type rear seat.

00004849

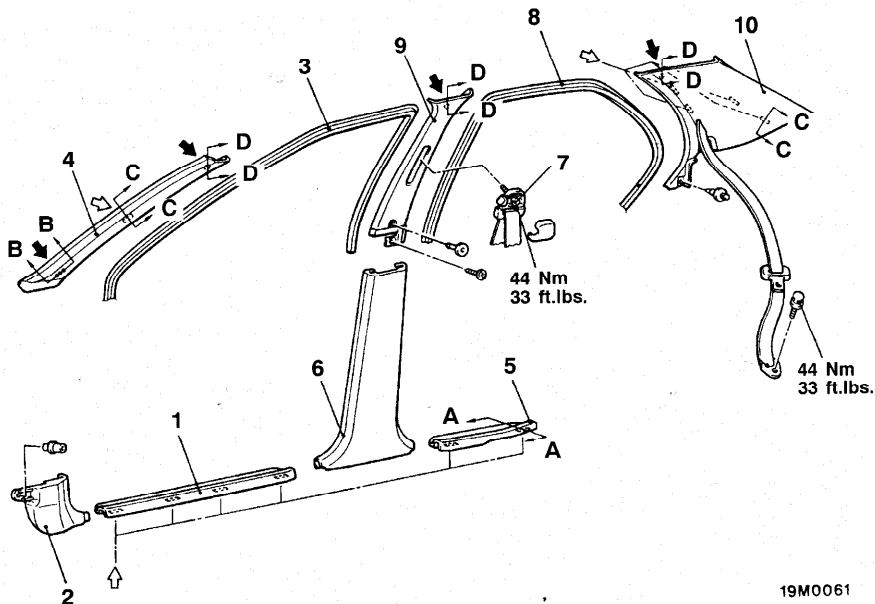
**Rear shelf trim removal steps**

- Rear seat assembly  
(Refer to P.52A-22.)
- 9. Rear seat back brace trim  
<Vehicles with split type rear seat>
- 10. Rear seat back trim  
<Vehicles with split type rear seat>
- 11. Rear partition board  
<Vehicles with bench type rear seat>
- 12. Speaker garnish
- 13. High mounted stop light
- 14. Rear shelf trim

**Trunk trim removal steps**

- 15. Rear end trim cover
- 16. Rear end trim
- 17. Trunk side trim

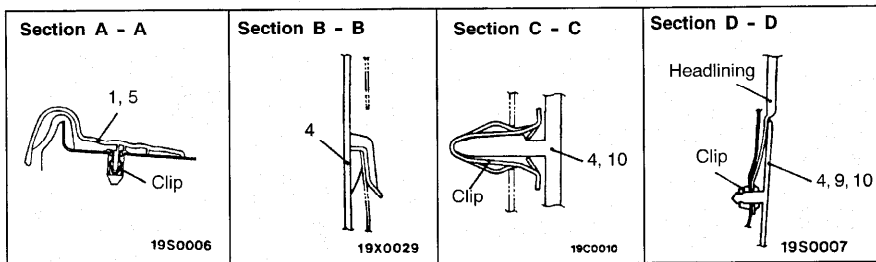
<4-door models>



19M0061  
00004850

NOTE

- ↖ : Metal clip position
- ▣ : Resin clip position



**Cowl side trim removal steps**

1. Front scuff plate
2. Cowl side trim

**Front pillar trim removal steps**

3. Front door inner opening weatherstrip
4. Front pillar trim

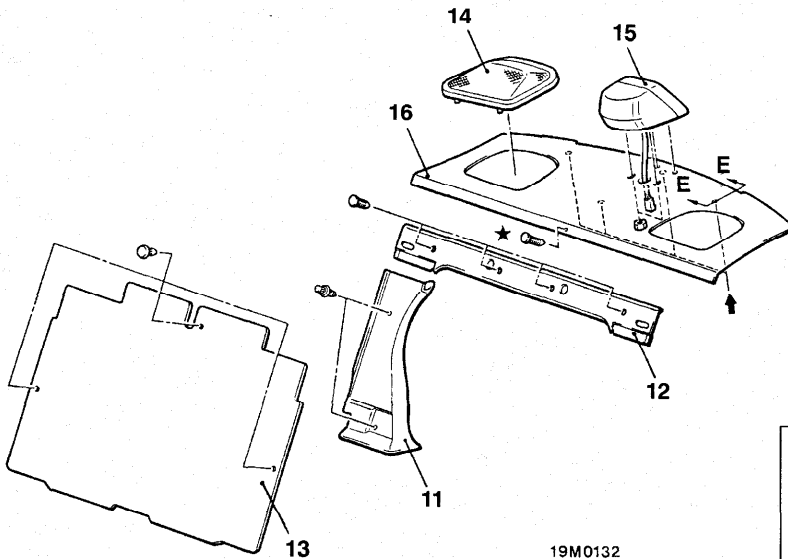
**Center pillar trim lower and center pillar trim upper removal steps**

1. Front scuff plate
5. Rear scuff plate
6. Center pillar trim, lower

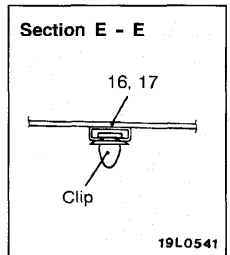
3. Front door inner opening weatherstrip
7. Sash guide
8. Rear door inner opening weatherstrip
9. Center pillar trim, upper

**Rear pillar trim removal steps**

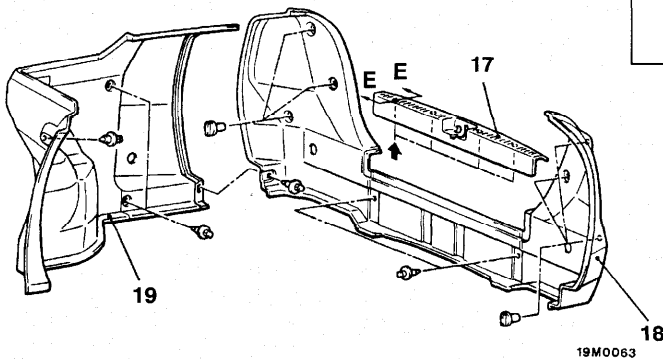
- Rear seat assembly (Refer to P.52A-22.)
- 8. Rear door inner opening weatherstrip
- Rear shelf trim (Refer to P.52A-16.)
- 10. Rear pillar trim



19M0132



19L0541



19M0063

00004849

## NOTE

- (1) ← : Resin clip position  
 (2) Clips marked with ★ are used on vehicles with split type rear seat.

**Rear shelf trim removal steps**

- Rear seat assembly  
 (Refer to P.52A-22.)
- 11. Rear seat back brace trim  
 <Vehicles with split type rear seat>
- 12. Rear seat back trim  
 <Vehicles with split type rear seat>
- 13. Rear partition board  
 <Vehicles with bench type rear seat>
- 14. Speaker garnish
- 15. High mounted stop light
- 16. Rear shelf trim

**Trunk trim removal steps**

- 17. Rear end trim cover
- 18. Rear end trim
- 19. Trunk side trim



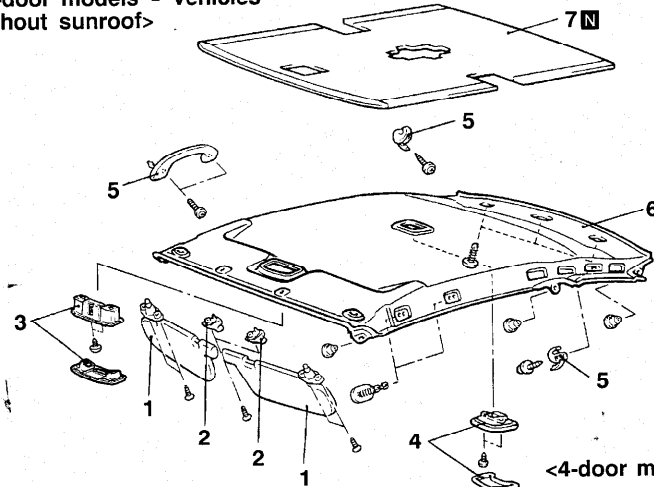
# HEADLINING

## REMOVAL AND INSTALLATION

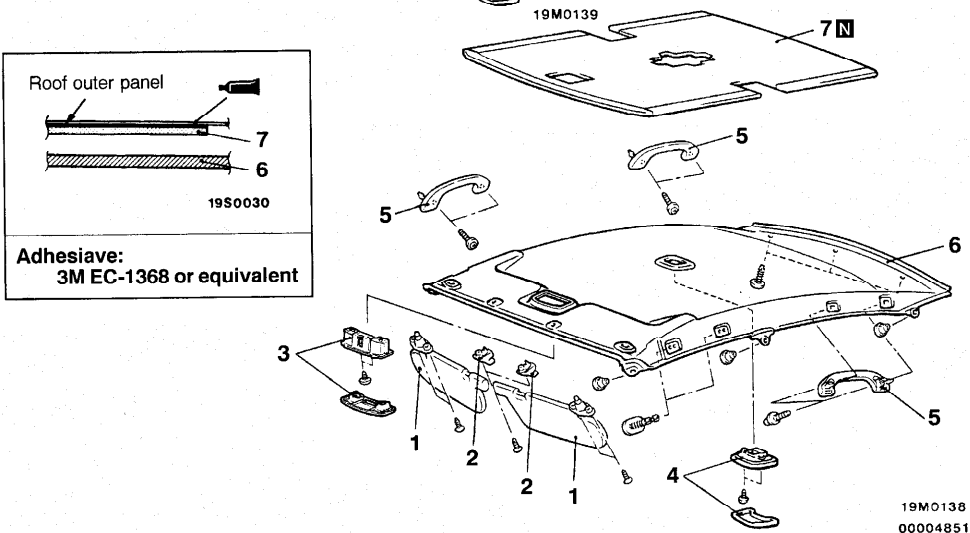
### Pre-removal and Post-installation Operation

- Front Pillar Trim, Center Pillar Trim <2-door models>, Center Pillar Trim Upper <4-door models> and Rear Pillar Trim Removal and Installation (Refer to P.52A-13.)

<2-door models - Vehicles without sunroof>



<4-door models - Vehicles without sunroof>



Roof outer panel

19S0030

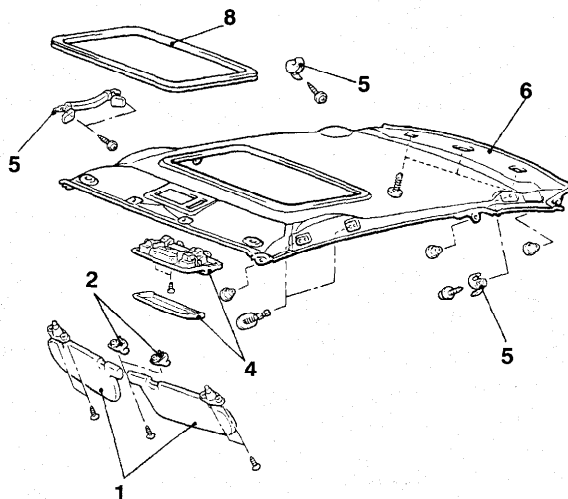
**Adhesive:**  
3M EC-1368 or equivalent

19M0138  
00004851

### Removal steps

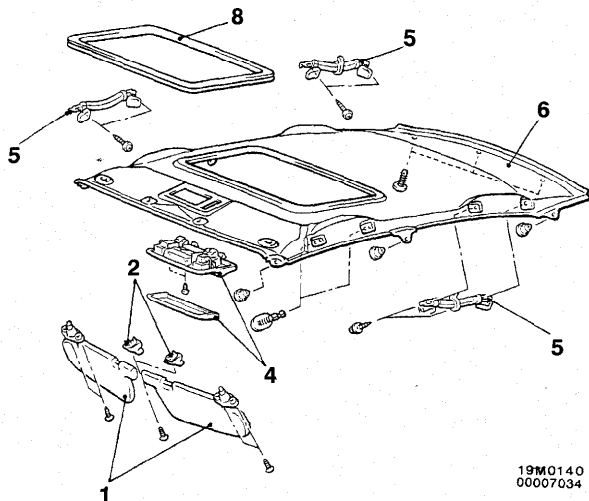
1. Sunvisor assembly
2. Sunvisor holder
3. Map light  
<Vehicles with map light>
4. Dome light
5. Assist grip or coat hanger
6. Headlining
7. Roof pad

## &lt;2-door models - Vehicles with sunroof&gt;



19M0191

## &lt;4-door models - Vehicles with sunroof&gt;

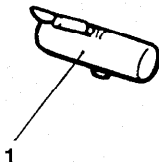
19M0140  
00007034**Removal steps**

1. Sunvisor assembly
2. Sunvisor holder
4. Dome light assembly

5. Assist grip or coat hanger
6. Headlining
8. Headlining trim

# INSIDE REAR VIEW MIRROR

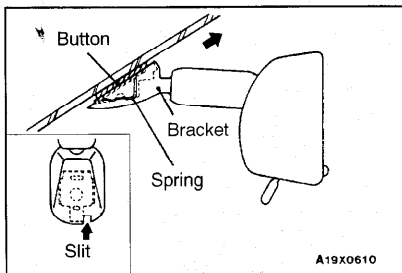
## REMOVAL AND INSTALLATION



A19X0657



1. Inside rear view mirror



### REMOVAL SERVICE POINT

#### ◀▶ INSIDE REAR VIEW MIRROR REMOVAL

Insert a narrow flat-tip screwdriver into the slit in the inside rear view mirror bracket, keep the spring pushed in and remove the inside rear view mirror in the direction of the arrow in the illustration.

#### NOTE

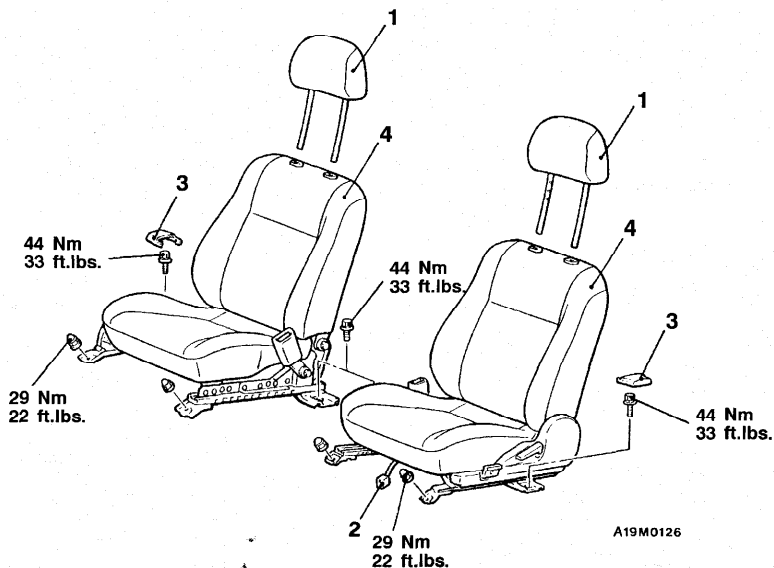
While the spring is pushed in, the connection between the spring and the pawl of the button is released.

## FRONT SEAT

## REMOVAL AND INSTALLATION

**Pre-removal and Post-installation Operation**

- Rear Floor Console Assembly Removal and Installation (Refer to P.52A-11.)



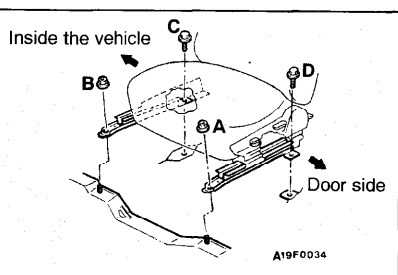
1. Headrest  
<Vehicles with low-back seat>

**NOTE**

Install each seat assembly mounting nut and bolt in every installation location, then tighten to the specified torque.

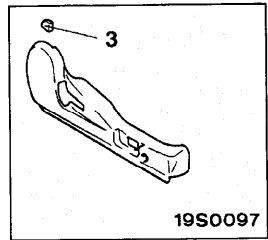
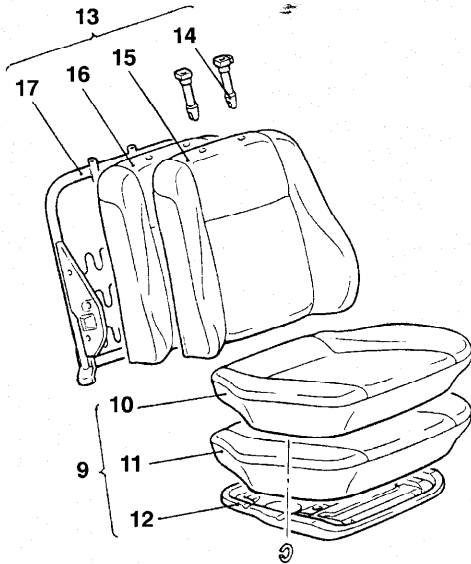
**Front seat assembly removal steps**

2. Harness connector
3. Seat anchor cover
4. Front seat assembly

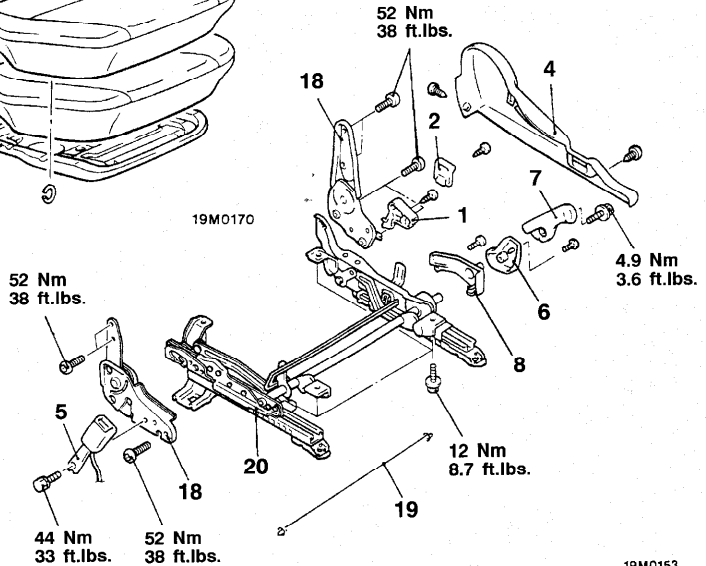
**INSTALLATION SERVICE POINT****▶A◀FRONT SEAT ASSEMBLY INSTALLATION**

Tighten the front seat mounting bolts in the order A, B, C, and D.

DISASSEMBLY AND REASSEMBLY



19M0170



19M0153  
00004880

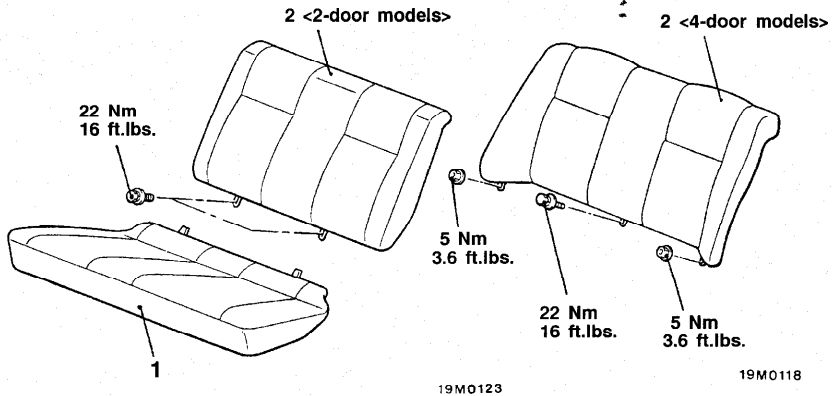
**Disassembly steps**

- |  |   |
|--|---|
| <ol style="list-style-type: none"> <li>1. Reclining adjusting knob</li> <li>2. Slide adjusting knob</li> <li>3. Walk-in knob</li> <li>4. Front seat shield cover</li> <li>5. Inner seat belt</li> <li>6. Front seat height adjuster inner lever &lt;Vehicles with height adjuster&gt;</li> <li>7. Front seat height adjuster lever &lt;Vehicles with height adjuster&gt;</li> <li>8. Front seat inner cover &lt;Vehicles with height adjuster&gt;</li> </ol> | <ol style="list-style-type: none"> <li>9. Front seat cushion assembly</li> <li>10. Front seat cushion cover</li> <li>11. Front seat cushion pad</li> <li>12. Front seat cushion frame</li> <li>13. Front seat back assembly</li> <li>14. Head restraint guide &lt;Vehicles with low-back seat&gt;</li> <li>15. Front seat back cover</li> <li>16. Front seat back pad</li> <li>17. Front seat back frame</li> <li>18. Reclining adjuster</li> <li>19. Pull wire</li> <li>20. Seat adjuster</li> </ol> |
|--|---|

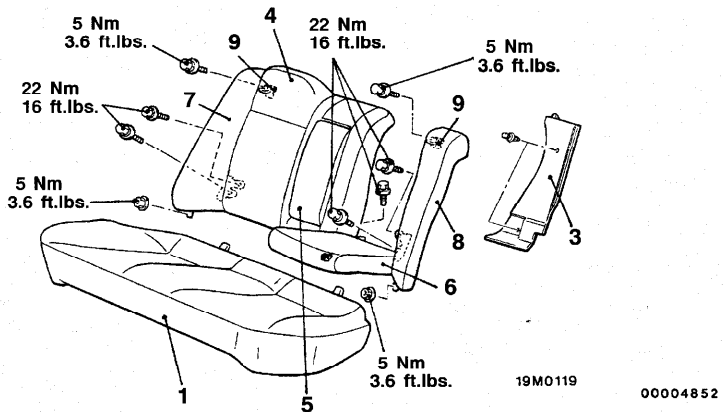
## REAR SEAT

## REMOVAL AND INSTALLATION

&lt;Bench seat&gt;



&lt;Split seat&gt;



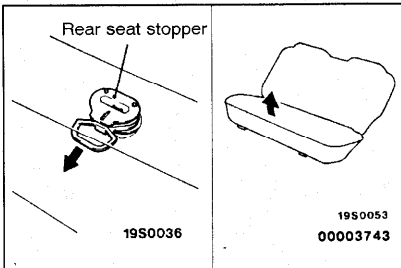
## Bench seat removal steps

- ◀A▶ ◀C▶ 1. Rear seat cushion  
▶A▶ 2. Rear seat back

## Split seat removal steps

- ◀A▶ ◀C▶ 1. Rear seat cushion  
▶A▶ 3. Rear seat back brace trim  
▶B▶ 4. Rear seat back (R.H.)

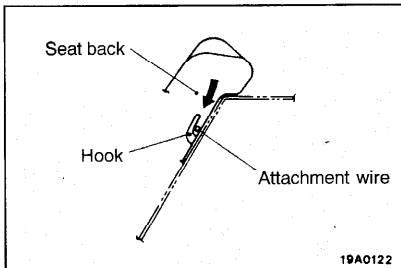
- ▶B▶ 5. Arm rest  
▶A▶ 6. Rear seat back (L.H.)  
▶A▶ 7. Rear seat back, side (R.H.)  
<4-door models>  
▶A▶ 8. Rear seat back, side (L.H.)  
<4-door models>  
9. Striker



**REMOVAL SERVICE POINT**

**◀A▶ REAR SEAT CUSHION REMOVAL**

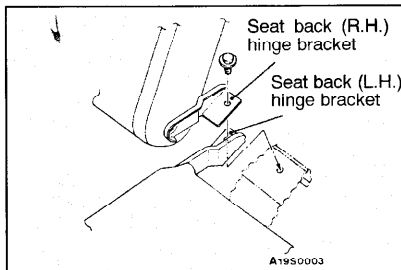
While keeping the rear seat stopper pulled, lift up the seat cushion to remove it.



**INSTALLATION SERVICE POINTS**

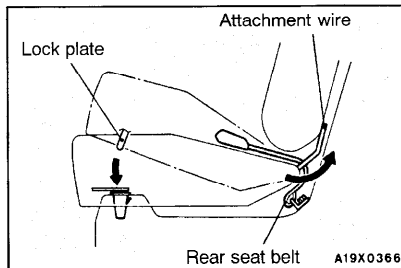
**▶A◀ REAR SIDE SEAT BACK (L.H.)/REAR SIDE SEAT BACK (R.H.)/REAR SEAT BACK INSTALLATION**

1. Push the seat back.
2. Then down in the direction indicated in the illustration; then securely attach the attachment wire to the body side hook and install the seat back.



**▶B◀ REAR SEAT BACK (L.H.)/REAR SEAT BACK (R.H.) INSTALLATION**

Place the seat back (L.H.) hinge bracket facing downward and the seat back (R.H.) hinge bracket facing upward, and then install the bolt.

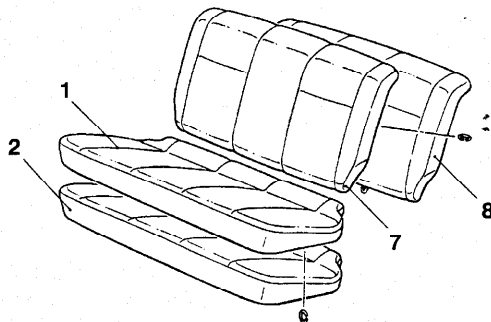


**▶C◀ REAR SEAT CUSHION INSTALLATION**

1. Pull the rear seat belt on top of the seat cushion.
2. Insert the seat cushion attachment wire securely below the seat back.
3. Insert the seat cushion lock plate securely into the floor holes.

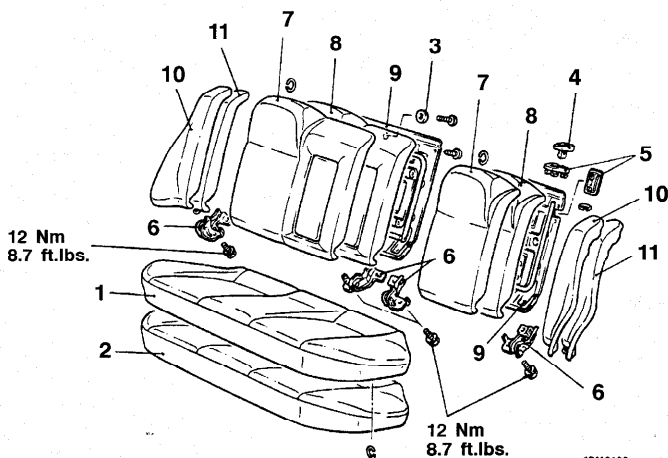
## DISASSEMBLY AND REASSEMBLY

&lt;Bench seat&gt;



19M0161

&lt;Split seat&gt;



19M0162

00004881

**Bench seat disassembly steps**

1. Rear seat cushion cover
2. Rear seat cushion pad
7. Rear seat back cover
8. Rear seat back pad

4. Knob
5. Garnish
6. Rear seat back hinge
7. Rear seat back cover
8. Rear seat back pad
9. Rear seat back frame
10. Rear seat back side cover

**Split seat disassembly steps**

1. Rear seat cushion cover
2. Rear seat cushion pad
3. Rear seat back damper

10. Rear seat back side cover
- <4-door models>
11. Rear seat back side pad
- <4-door models>

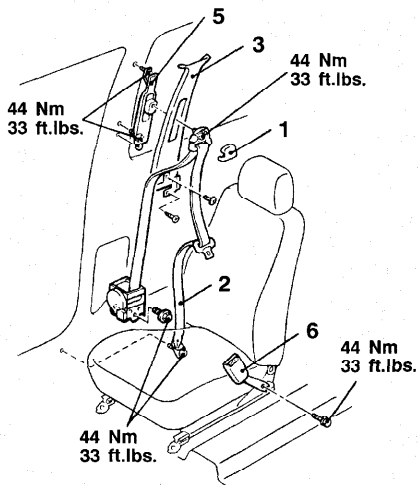


# FRONT SEAT BELT

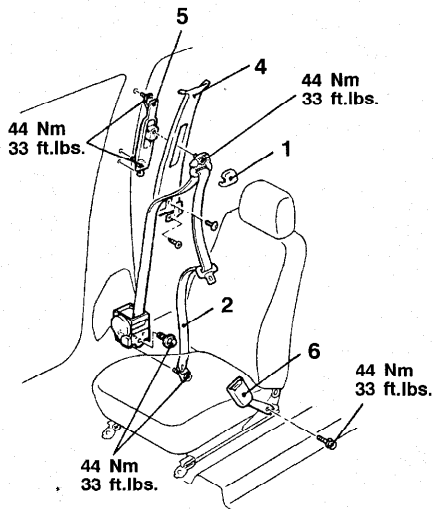
## REMOVAL AND INSTLLATION

<2-door models>

<4-door models>

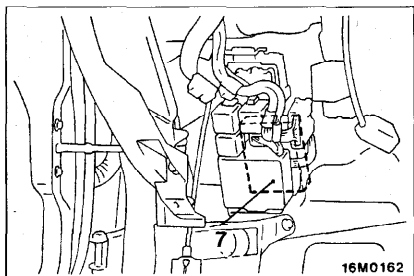


19M0121



19M0120

00004853



16M0162

### Outer seat belt removal steps

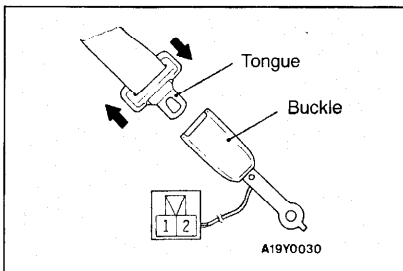
- Quarter trim  
<2-door model>  
(Refer to P.52A-13.)
- Center pillar trim, lower  
<4-door model>  
(Refer to P.52A-15.)
- 1. Sash guide cover
- 2. Outer seat belt
- 3. Center pillar trim  
<2-door models>  
(Refer to P.52A-13.)
- 4. Center pillar trim, upper  
<4-door models>  
(Refer to P.52A-15.)
- 5. Adjustable seat belt anchor

### Inner seat belt removal steps

- Front seat (Refer to P.52A-20.)
- 6. Inner seat belt

### Buzzer-ECU or ETACS-ECU (Seat belt warning light timer and buzzer) removal

- 7. Buzzer-ECU or ETACS-ECU  
(Refer to GROUP 54 - ignition Switch.)



## INSPECTION

52300140051

## SEAT BELT BUCKLE SWITCH CONTINUITY CHECK

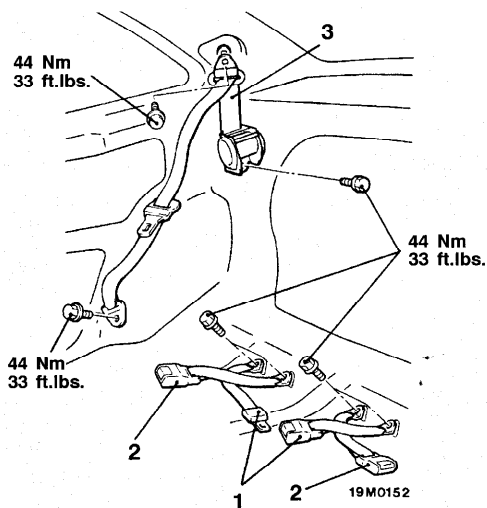
Items	Terminal No.	
	1	2
Fastened seat belt		
Unfastened seat belt	○	○

## REAR SEAT BELT

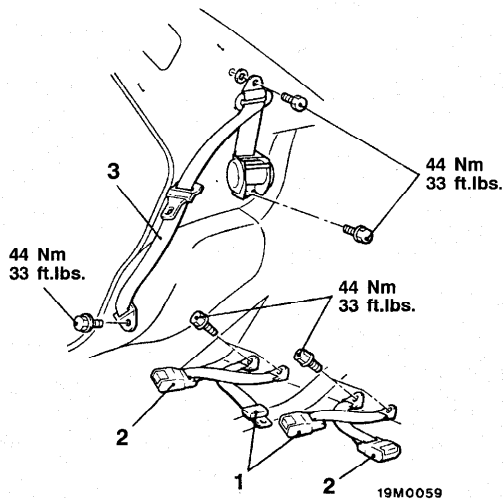
52300160088

## REMOVAL AND INSTALLATION

&lt;2-door models&gt;



&lt;4-door models&gt;



00004854

## Removal steps

- Rear seat  
(Refer to P.52A-22.)
- 1. Center seat belt
- 2. Inner seat belt
- Quarter trim <2-door models>  
(Refer to P.52A-13.)
- Rear pillar trim  
(Refer to P.52A-13.)
- 3. Outer seat belt