

---

**GROUP 13C**

**FUEL SUPPLY**

**CONTENTS**

**GENERAL INFORMATION ..... 13C-2    FUEL TANK ..... 13C-4**

## GENERAL INFORMATION

M2134000100316

## &lt;134, 135&gt;

The fuel system consists of the following components:

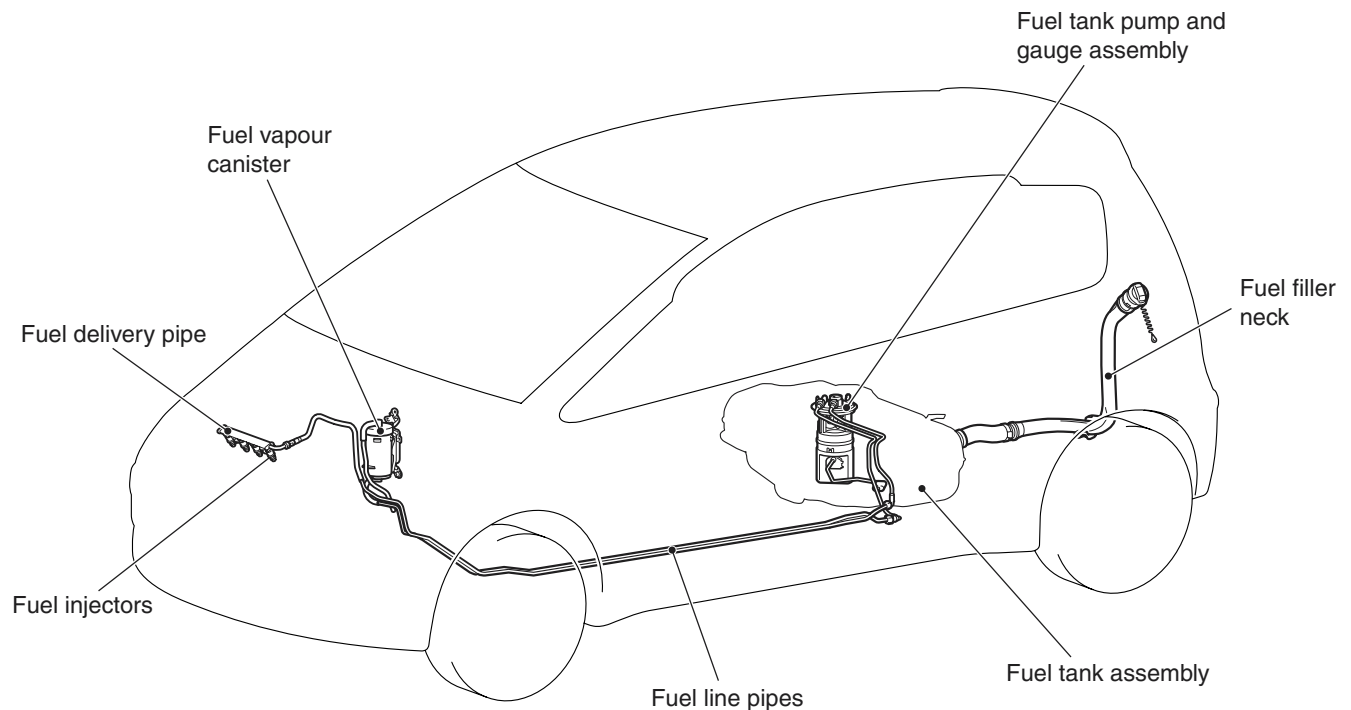
- Fuel injector

- Fuel delivery pipe
- Fuel vapour canister
- Fuel tank pump and gauge assembly
- Fuel tank assembly

## SPECIFICATIONS

Item		Specification	
Fuel tank capacity L		47	
Fuel pump type		Electric	
Fuel filter type		Cartridge (filter-paper type)	
Fuel pump pressure regulator control pressure kPa		324	
Fuel injector	Type	Electro-magnetic	
	Quantity	134	3
		135	4
Evaporative emission control system		Fuel vapour canister	

## CONSTRUCTION DIAGRAM



AC312236AD

This fuel system is designed with consideration for global environment protection to ensure safety at a collision, reduce weight, and improve reliability and quality. This system has the following features:

- A fuel return-less system eliminates returned fuel from the engine. The heat that fuel receives from the engine is reduced, minimizing fuel temperature in the fuel tank and controlling the amount of evaporated gas.
- A resin coating is treated on the underfloor fuel line pipes, improving reliability.

- The use of fuel return-less system allows the return pipe and hose to be discontinued, and reduces weight.
- A plastic fuel filler neck is used to reduce weight.

- Fuel injectors
- High-pressure pump
- Common rail
- Fuel filter assembly
- Fuel tank pump and gauge assembly
- Fuel tank assembly

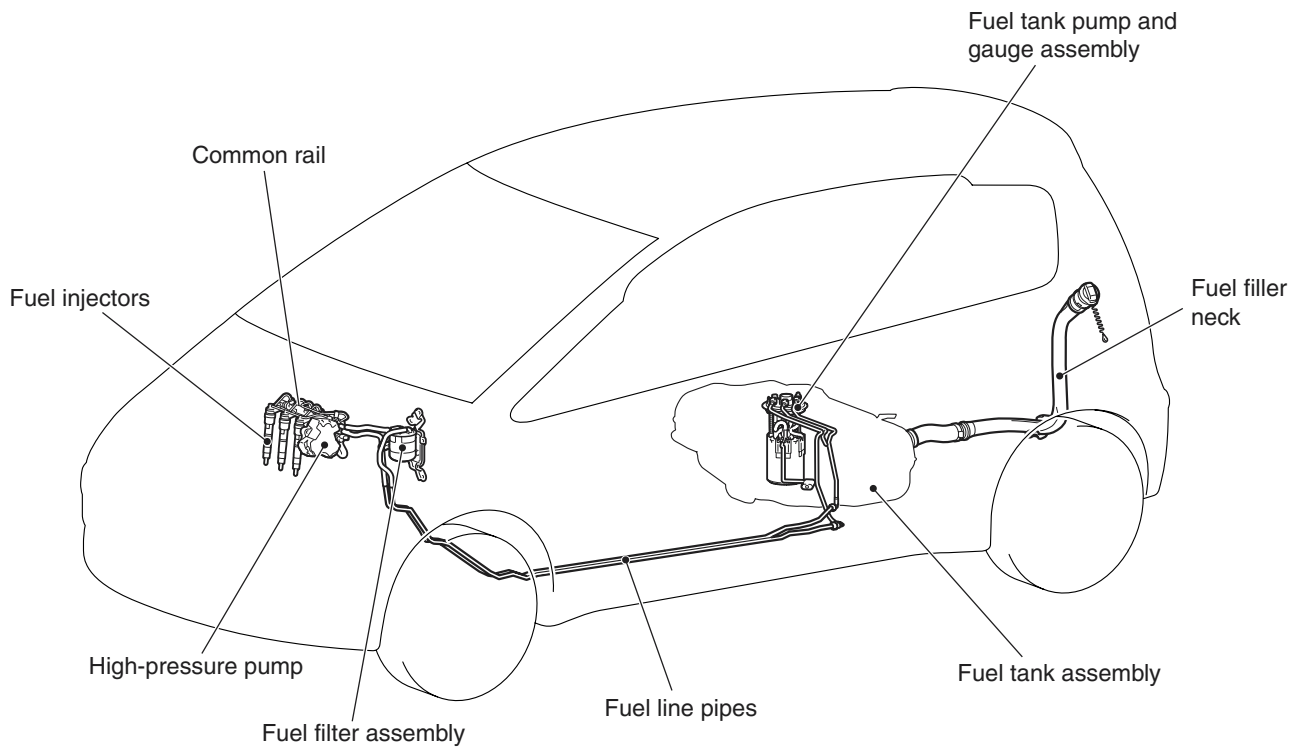
**<639>**

The common rail fuel injection system is adopted.  
The fuel system consists of the following components:

**SPECIFICATIONS**

Item	Specification
Fuel tank capacity L	47
Fuel pump type	Electric (integrated in fuel tank pump and gauge assembly)
Fuel filter type	Cartridge (filter-paper type)

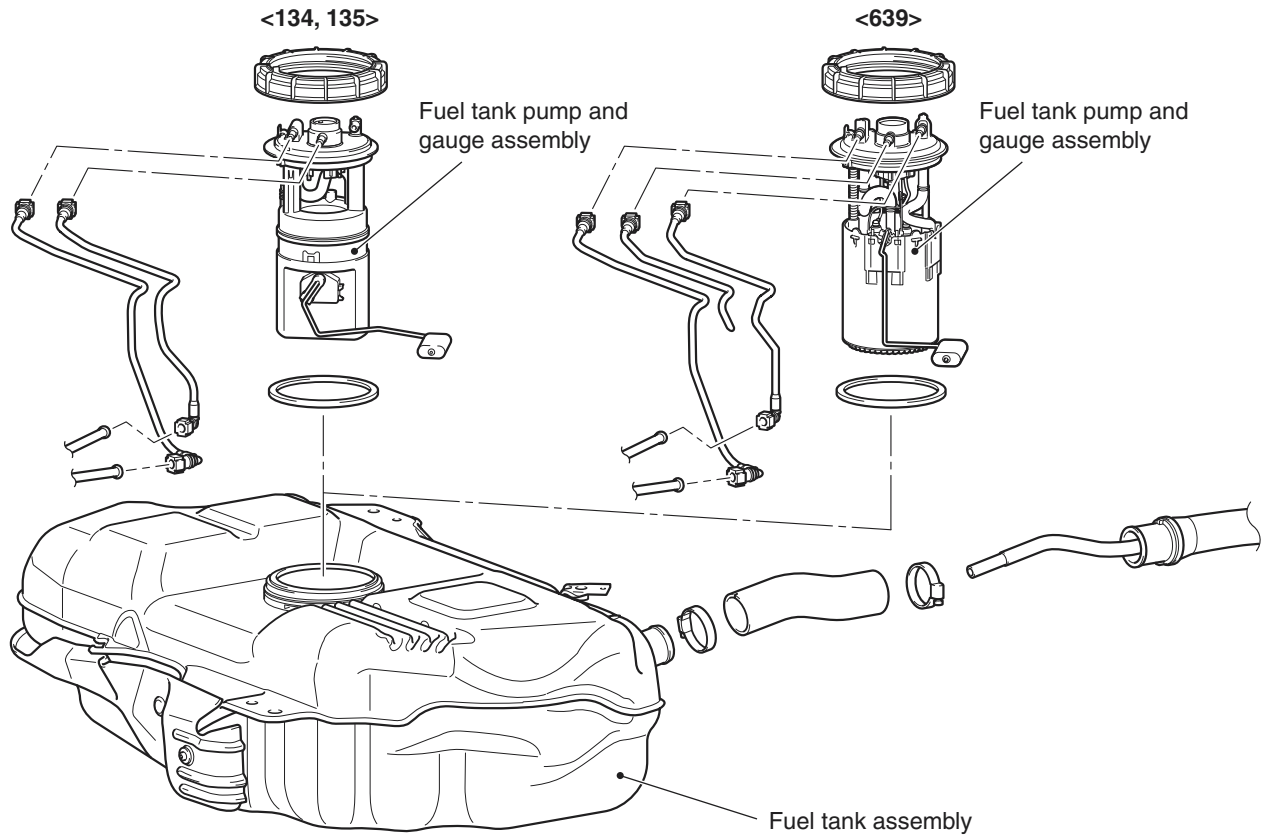
**CONSTRUCTION DIAGRAM**



## FUEL TANK

M2134001000367

## CONSTRUCTION DIAGRAM



AC400655AB

The fuel tank assembly is installed under the rear seat floor, and includes the fuel tank pump and gauge assembly. Its features are as follows:

- The fuel tank is located underneath the rear seats to improve safety at a collision.
- A plastic fuel tank is used to reduce weight.

The fuel tank pump and gauge assembly consist of the following components:

- Fuel tank pump
- Fuel tank gauge unit
- Fuel tank filter assembly <134, 135>
- Fuel cut-off valve assembly <134, 135>
- Two-way valve <639>