

GROUP 32

POWER PLANT MOUNT

CONTENTS

GENERAL INFORMATION	32-2	TRANSMISSION MOUNTING	32-5
SERVICE SPECIFICATION	32-3	REMOVAL AND INSTALLATION	32-5
SPECIAL TOOL	32-3	ENGINE ROLL STOPPER, CENTREMEMBER	32-7
ENGINE MOUNTING	32-4	REMOVAL AND INSTALLATION	32-7
REMOVAL AND INSTALLATION	32-4	CROSSMEMBER*	32-8
		REMOVAL AND INSTALLATION	32-8

WARNINGS REGARDING SERVICING OF SUPPLEMENTAL RESTRAINT SYSTEM (SRS) EQUIPPED VEHICLES
 **WARNING**

- *Improper service or maintenance of any component of the SRS, or any SRS-related component, can lead to personal injury or death to service personnel (from inadvertent firing of the air bag) or to the driver and passenger (from rendering the SRS inoperative).*
- *Service or maintenance of any SRS component or SRS-related component must be performed only at an authorized MITSUBISHI dealer.*
- *MITSUBISHI dealer personnel must thoroughly review this manual, and especially its GROUP 52B - Supplemental Restraint System (SRS) before beginning any service or maintenance of any component of the SRS or any SRS-related component.*

NOTE

The SRS includes the following components: SRS air bag control unit, SRS warning light, front impact sensors, air bag module, clock spring, and interconnecting wiring. Other SRS-related components (that may have to be removed/installed in connection with SRS service or maintenance) are indicated in the table of contents by an asterisk (*).

GENERAL INFORMATION

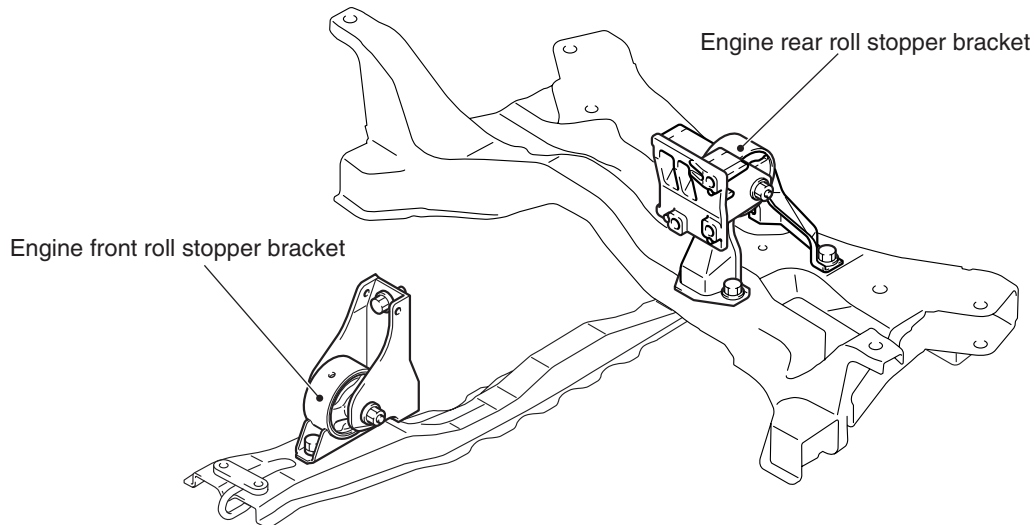
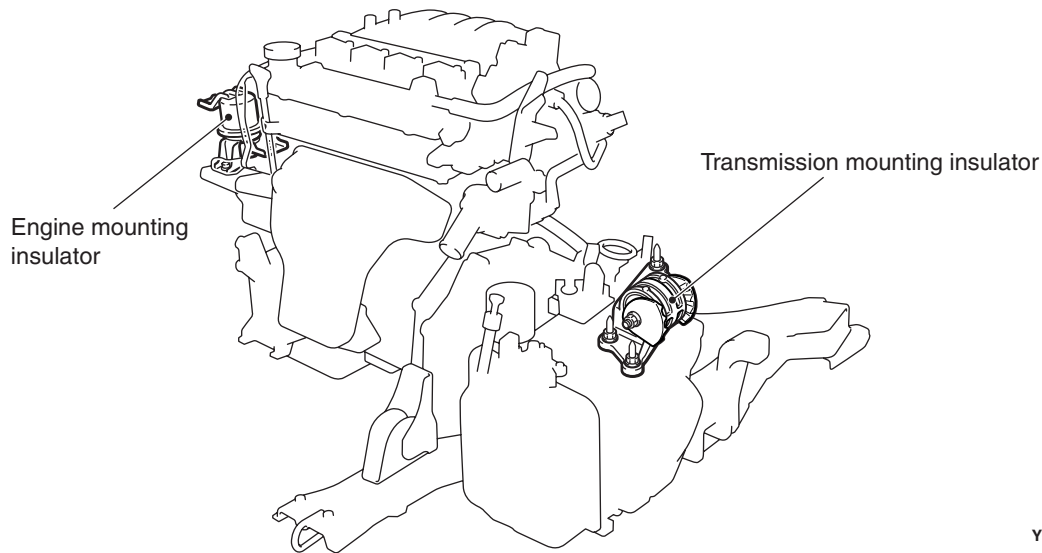
M1321000100340

The engine mounting system employs the inertial axis four-point suspension method, which is field proven.

- The optimised locations of the front and rear roll mounts well distribute their loads thereby reducing engine idling vibrations.

- The fore-and-aft, liquid-filled engine mount of cylinder type is adopted to reduce engine shake for improved riding comfort.

CONSTRUCTION DIAGRAM



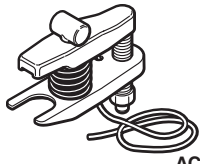
SERVICE SPECIFICATION

M1321000300333

Item	Standard value
Protruding length of stabilizer bar mounting bolt mm	22 ± 1.5

SPECIAL TOOL

M1321000600657

Tool	Number	Name	Use
 <p>AC106827</p>	MB991897 or MB992011	Ball joint remover	Knuckle and tie rod end ball joint disconnection <i>NOTE: Steering linkage puller (MB990635 or MB991113) is also available to disconnect knuckle and tie rod end ball joint.</i>

ENGINE MOUNTING**REMOVAL AND INSTALLATION**

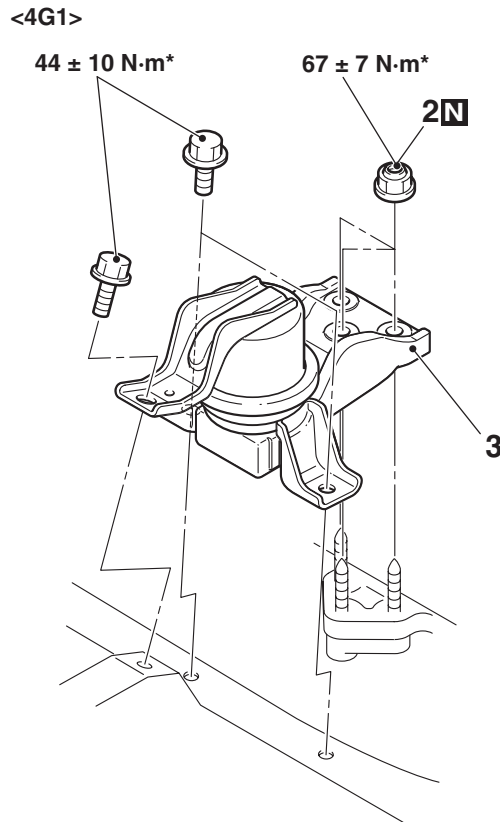
M1321001101164

CAUTION

*: Indicates parts which should be initially tightened, and then fully tightened after placing the vehicle horizontally and loading the full weight of the engine on the vehicle body.

Pre-removal Operation

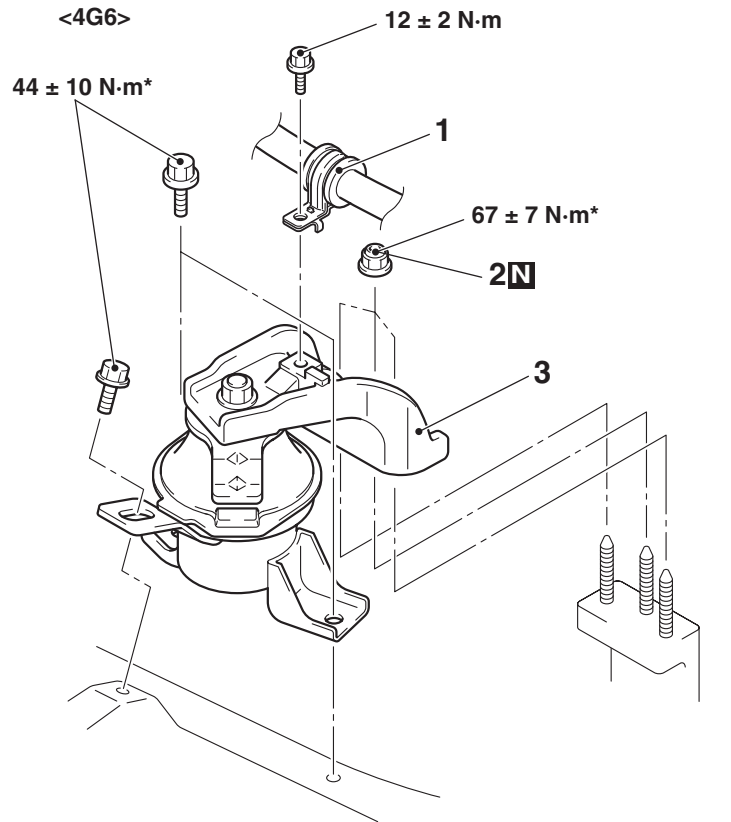
Raise the engine and transmission assembly until its weight is not applied to the insulator, and support it securely.



AC303999

Removal steps

1. Pressure hose clamp <4G6>

AC511707
AC511708AB**Removal steps (Continued)**

2. Self-locking nuts
3. Engine mounting insulator

TRANSMISSION MOUNTING

REMOVAL AND INSTALLATION

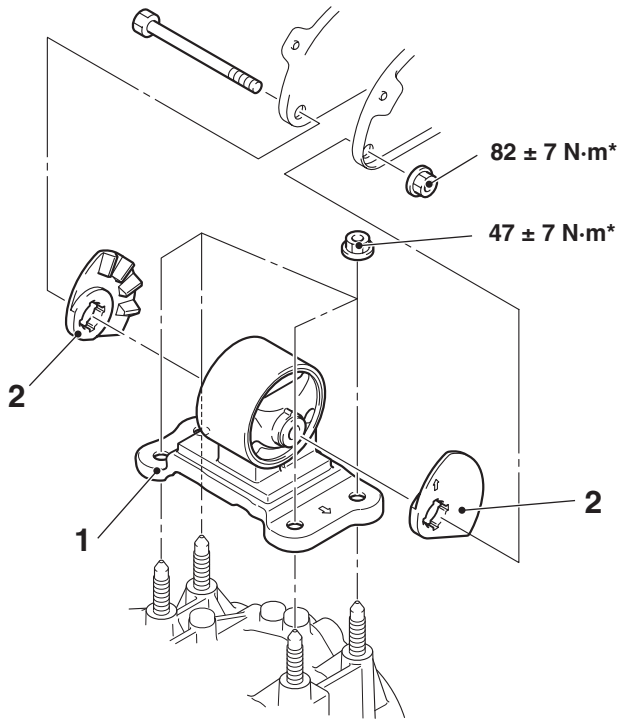
M1321001400430

CAUTION

*: Indicates parts which should be initially tightened, and then fully tightened after placing the vehicle horizontally and loading the full weight of the engine on the vehicle body.

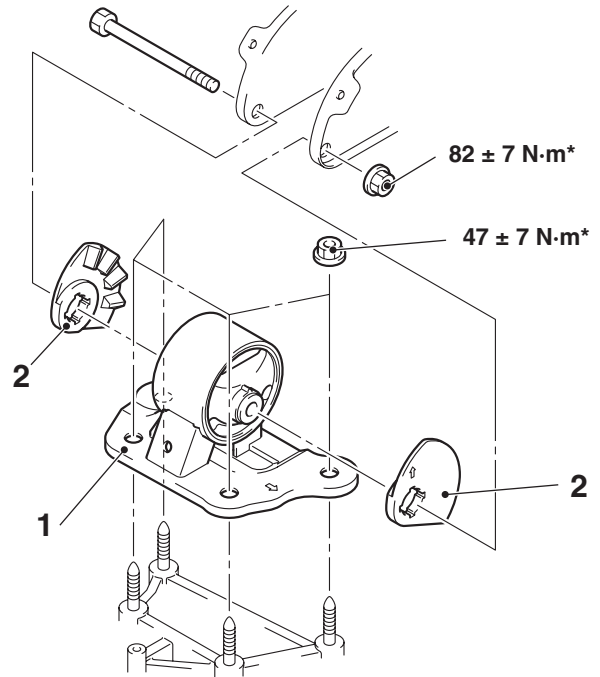
Pre-removal Operation	Post-installation Operation
<ul style="list-style-type: none"> • Raise the engine and transmission assembly until its weight is not applied to the insulator, and support it securely. • Battery and Battery tray Removal • Air Cleaner Removal (Refer to GROUP 15, Air Cleaner P.15-3). • Engine Rear Roll Stopper Bracket Removal (Refer to P.32-7). 	<ul style="list-style-type: none"> • Engine Rear Roll Stopper Bracket Installation (Refer to P.32-7). • Air Cleaner Installation (Refer to GROUP 15, Air Cleaner P.15-3). • Battery and Battery tray Installation

<M/T>



AC303988

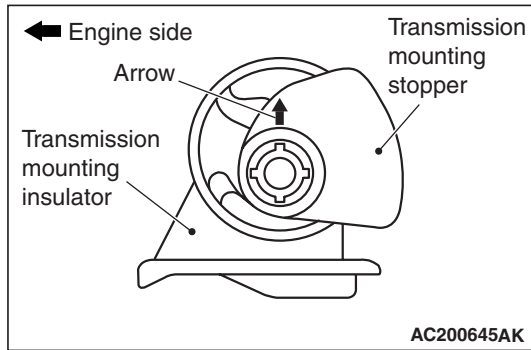
<A/T>



AC303989
AC304258AB

Removal steps

- >>A<<
1. Transmission mounting insulator
 2. Transmission mounting stopper

**INSTALLATION SERVICE POINT
>>A<< TRANSMISSION MOUNTING
STOPPER INSTALLATION**

Install the transmission mounting stopper so that its arrow points upward.

ENGINE ROLL STOPPER, CENTREMEMBER

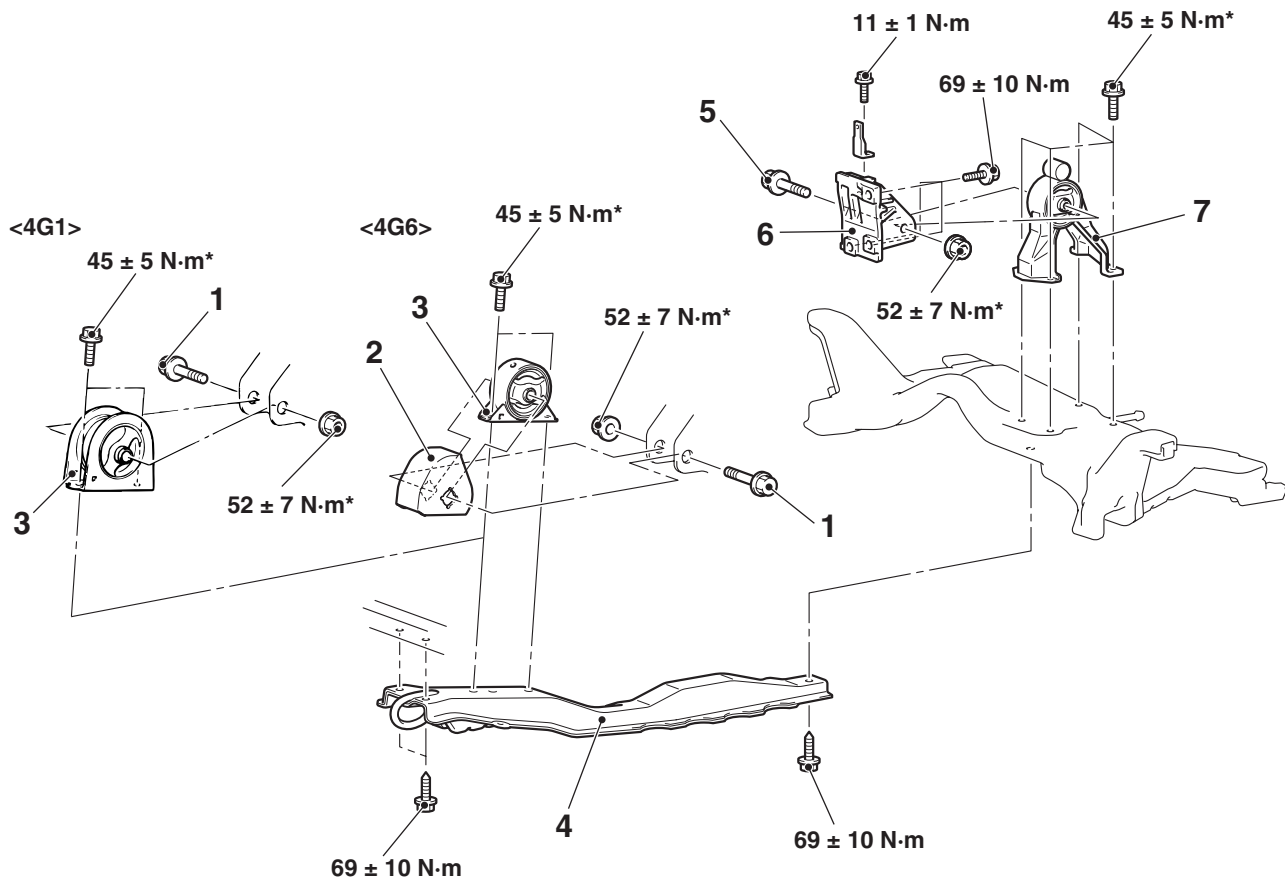
REMOVAL AND INSTALLATION

M1321002300287

CAUTION

*: Indicates parts which should be initially tightened, and then fully tightened after placing the vehicle horizontally and loading the full weight of the engine on the vehicle body.

Pre-removal and Post-installation Operation
Under Cover Removal and Installation



AC303978
AC304309AB

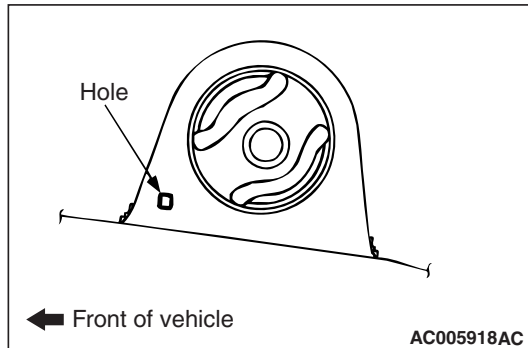
Engine front roll stopper bracket and centremember removal steps

1. Engine front roll stopper bracket connecting bolt
 - Centremember and engine front roll stopper bracket assembly
- >>B<< 2. Engine mounting cushion stopper <4G6>
- >>A<< 3. Engine front roll stopper bracket
4. Centremember

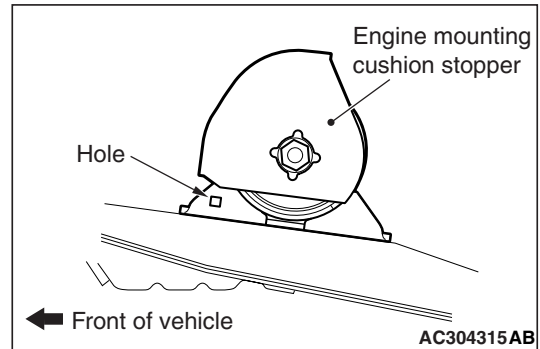
Engine rear roll stopper bracket removal steps

5. Engine rear roll stopper bracket connecting bolt
6. Transmission case rear roll stopper bracket
7. Engine rear roll stopper bracket

INSTALLATION SERVICE POINTS

>>A<< ENGINE FRONT ROLL STOPPER
BRACKET INSTALLATION

Install the engine front roll stopper bracket so that its hole points towards the front side of the vehicle.

>>B<< ENGINE MOUNTING CUSHION
STOPPER INSTALLATION <4G6>

Install the engine mounting cushion stopper as shown.

CROSSMEMBER

REMOVAL AND INSTALLATION

M1321003200830

CAUTION

- Before removing the steering wheel and air bag module assembly, always refer to GROUP 52B - Service Precautions P.52B-5, Air bag Module and Clock Spring P.52B-199. Also, set the front wheels so that they are facing straight forward, and remove the ignition key. If you fail to do this, the SRS clock spring will be damaged, causing the SRS air bag to be inoperative and serious injury.
- *1: Indicates parts which should be initially tightened, and then fully tightened after placing the vehicle horizontally and loading the full weight of the engine on the vehicle body.
- *2: Indicates parts which should be temporarily tightened, and then fully tightened with the vehicle on the earth in the unladen condition.

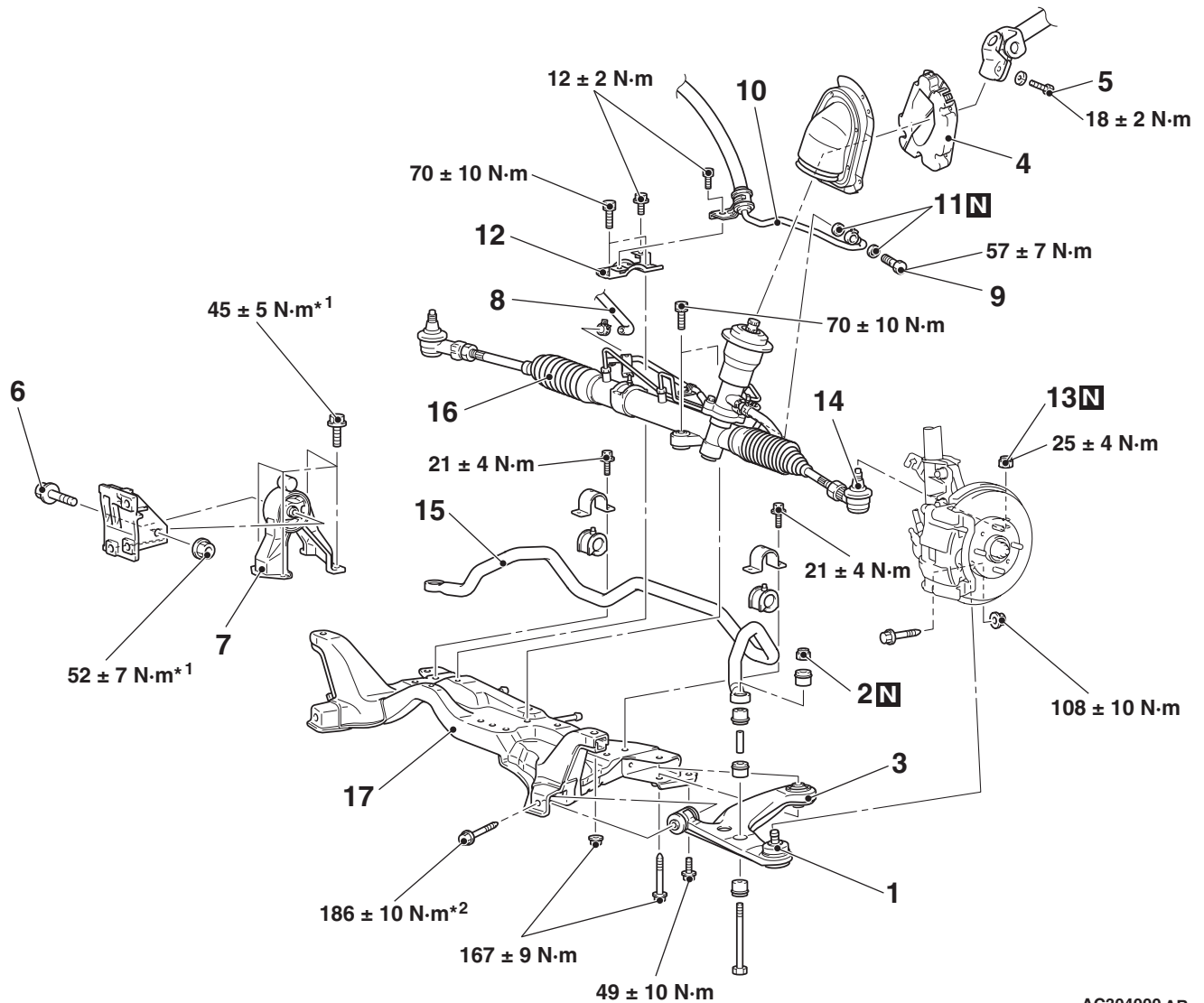
Pre-removal Operation

- Centremember Removal (Refer to P.32-7).
- Front Exhaust Pipe Removal (Refer to GROUP 15, Exhaust Pipe and Main Muffler P.15-11).
- Steering Wheel Air Bag Module Assembly Removal <INVITE> (Refer to GROUP 37, Steering Wheel P.37-17).
- Steering Wheel Air Bag Module Assembly Removal <INTENSE> (Refer to GROUP 37, Steering Wheel P.37-18).
- Power Steering Fluid Draining (Refer to GROUP 37, On-vehicle Service P.37-13).

Post-installation Operation

- Front Exhaust Pipe Installation (Refer to GROUP 15, Exhaust Pipe and Main Muffler P.15-11).
- Centremember Installation (Refer to P.32-7).
- Clock Spring Centring (Refer to GROUP 52B, Air Bag Modules and Clock Spring P.52B-199).
- Steering Wheel Air Bag Module Assembly Installation <INVITE> (Refer to GROUP 37, Steering Wheel P.37-17).
- Steering Wheel Air Bag Module Assembly Installation <INTENSE> (Refer to GROUP 37, Steering Wheel P.37-18).
- Power Steering Fluid Supplying (Refer to GROUP 37, On-vehicle Service P.37-13).
- Power Steering Fluid Line Bleeding (Refer to GROUP 37, On-vehicle Service P.37-13).
- Press the dust cover with a finger to check whether the dust cover cracked or damaged.
- Checking Steering Wheel Position with Wheels Straight Ahead.
- Front Wheel Alignment Check and Adjustment (Refer to GROUP 33, On-vehicle Service P.33-5).

<L.H. drive vehicles>



AC304000 AB

Removal steps

- >>B<<
1. Lower arm and knuckle connection
 2. Self-locking nut
 3. Lower arm assembly
 4. Shaft cover
 5. Steering shaft assembly and gear box connecting bolt
 6. Engine rear roll stopper bracket connection bolt
 7. Engine rear roll stopper bracket
 8. Return hose connection

<<A>>

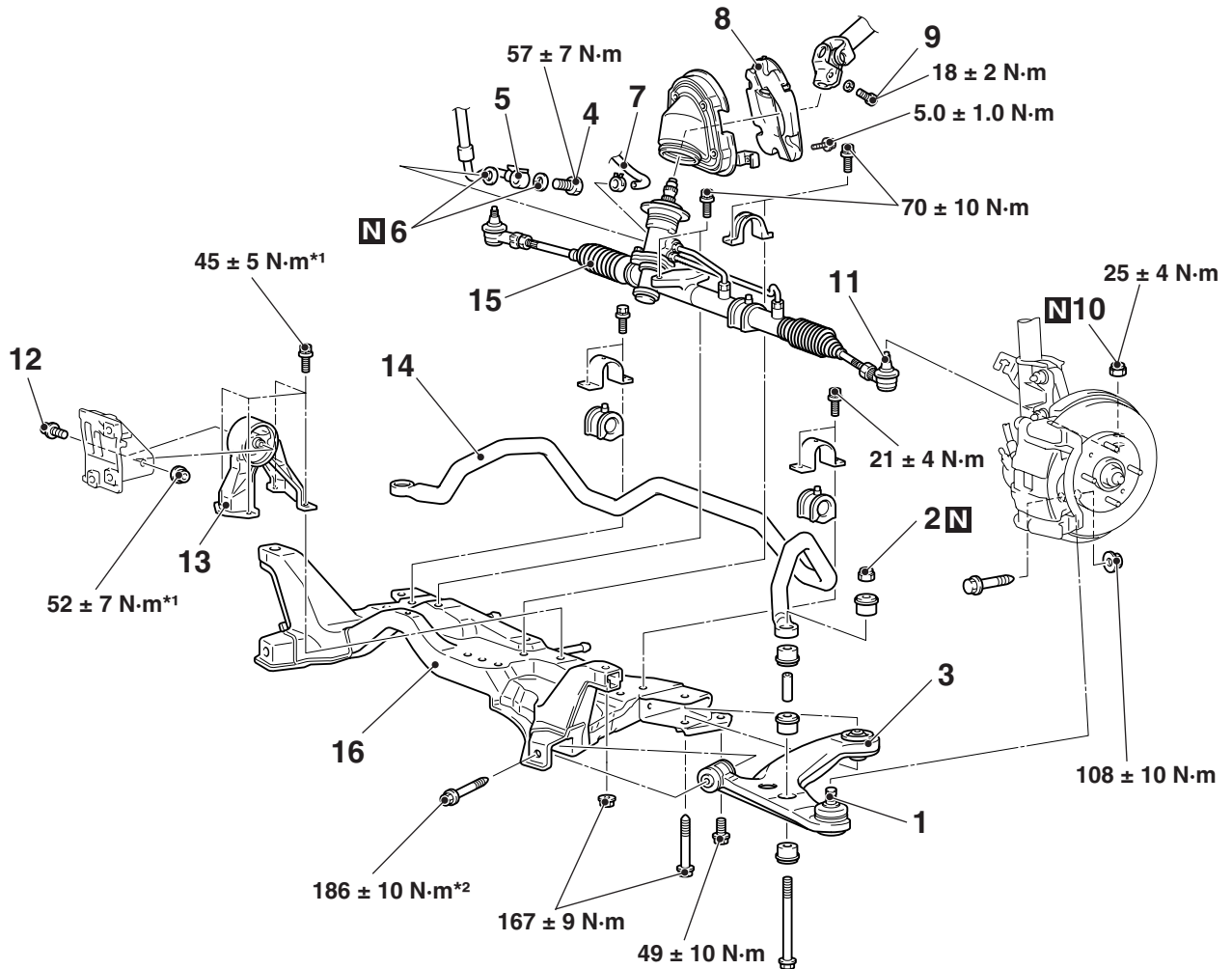
<>

>>A<<

Removal steps (Continued)

9. Eye bolt
10. Pressure hose connection
11. Gasket
12. Clamp
13. Self-locking nut
14. Tie rod end and knuckle connection
- Crossmember assembly
15. Stabilizer bar
16. Steering gear and linkage
17. Crossmember

<R.H. drive vehicles>



AC101614AE

Removal steps

- >>B<< 1. Lower arm and knuckle connection
- 2. Self-locking nut <<A>>
- 3. Lower arm assembly
- 4. Eye bolt
- 5. Pressure hose connection <>
- 6. Gasket
- 7. Return hose connection >>A<<
- 8. Shaft cover
- 9. Steering shaft assembly and gear box connecting bolt

Removal steps (Continued)

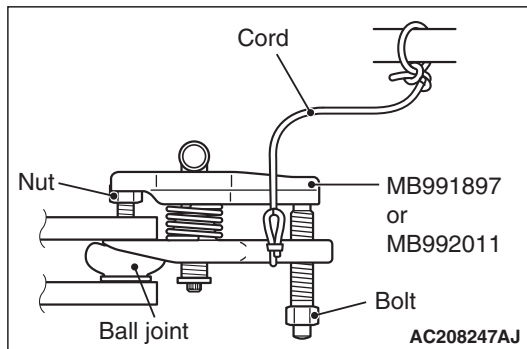
- 10. Self-locking nut
- 11. Tie rod end and knuckle connection
- 12. Engine rear roll stopper bracket connection bolt
- Crossmember assembly
- 13. Engine rear roll stopper bracket
- 14. Stabilizer bar
- 15. Steering gear and linkage
- 16. Crossmember

REMOVAL SERVICE POINTS

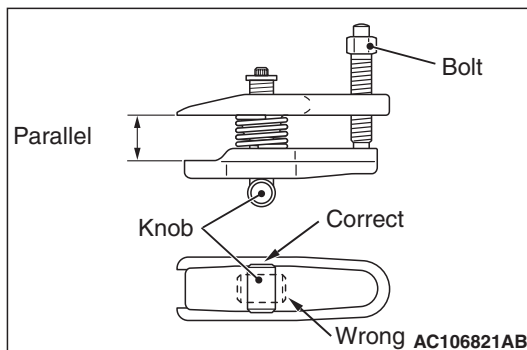
<<A>> TIE ROD END AND KNUCKLE DIS- CONNECTION

⚠ CAUTION

- Do not remove the nut from ball joint. Loosen it and use special tool to avoid possible damage to ball joint threads.
- Hang special tool with a cord to prevent it from falling.

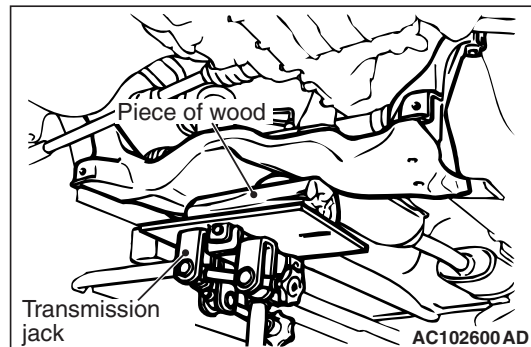


1. Install the special tool ball joint remover (MB991897 or MB992011) as shown in the figure.



2. Turn the bolt and knob as necessary to make the jaws of the special tool parallel, tighten the bolt by hand and confirm that the jaws are still parallel.
NOTE: When adjusting the jaws in parallel, make sure the knob is in the position shown in the figure.
3. Tighten the bolt with a wrench to disconnect the tie rod end.

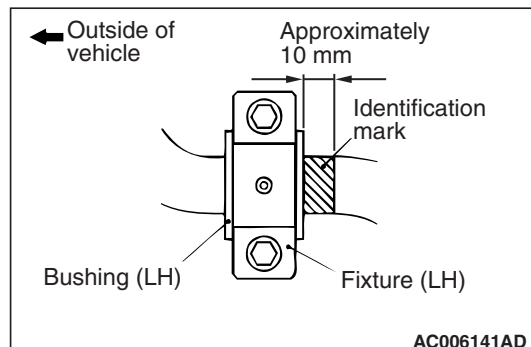
<> CROSSMEMBER ASSEMBLY REMOVAL



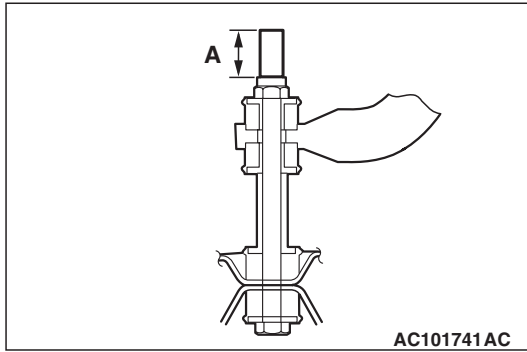
1. Use a transmission jack to hold the crossmember, and then remove the crossmember mounting nuts and bolts.
2. Lower the crossmember with the engine rear roll stopper bracket, the stabilizer bar, the return tube, and the steering gear.

INSTALLATION SERVICE POINTS

>>A<< STABILIZER BAR FIXTURE INSTALLATION



Align the stabilizer bar identification mark with the right end of the bushing (LH).

>>B<< SELF-LOCKING NUT
INSTALLATION

Tighten the self-locking nut until the stabilizer bar mounting bolt thread part protruding length meets the standard value.

Standard value (A): 22 ± 1.5 mm