

---

**GROUP 5**

**SYNTHETIC-RESIN  
PARTS**

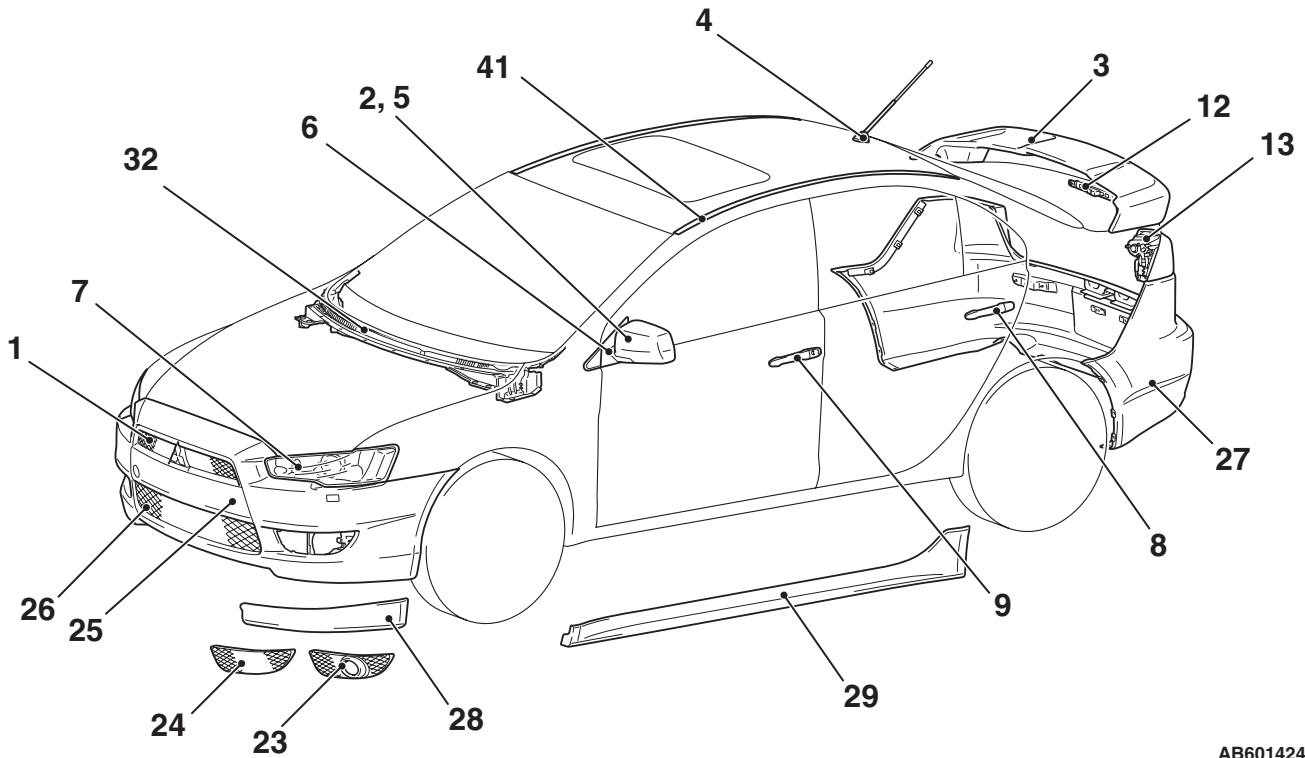
**CONTENTS**

**LOCATION OF SYNTHETIC-RESIN  
PARTS ..... 5-2**

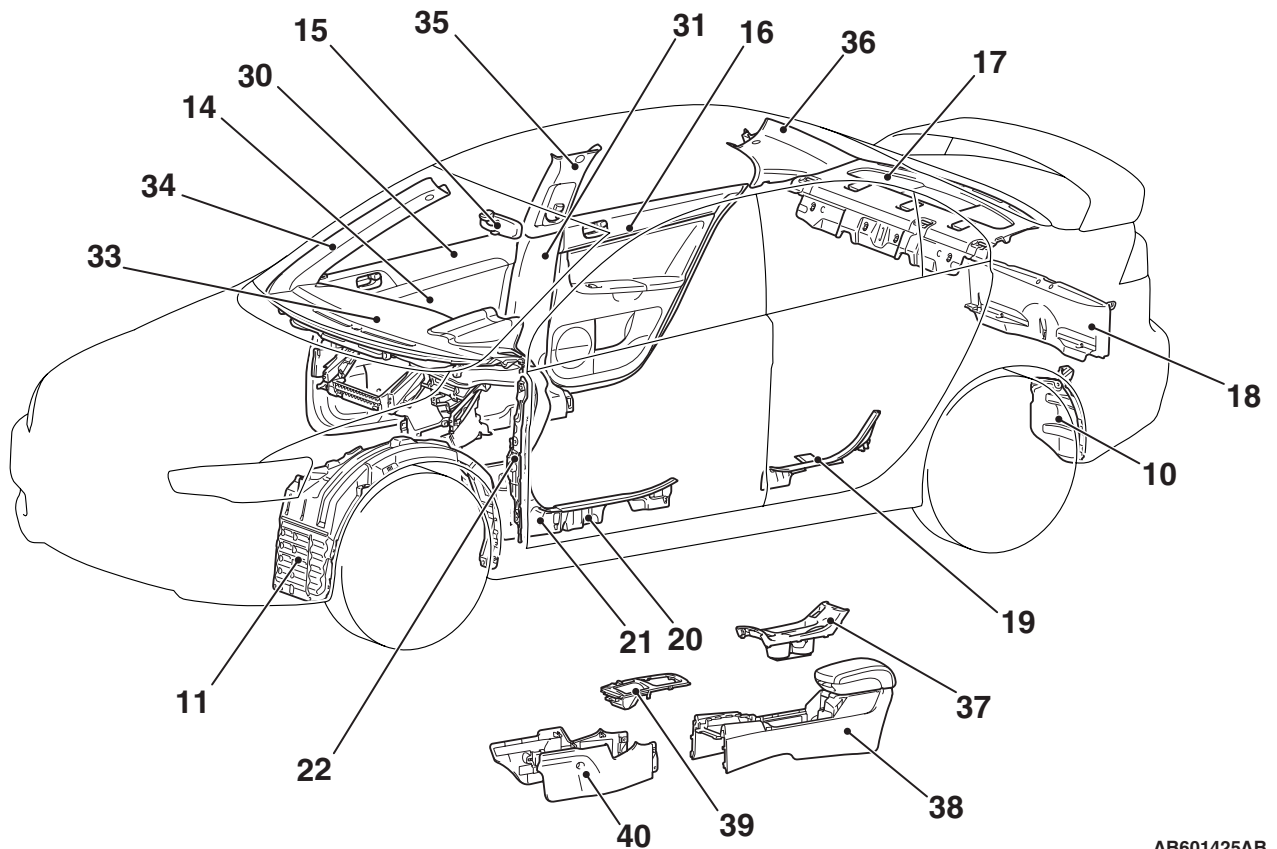
# LOCATION OF SYNTHETIC-RESIN PARTS

M4050001000980

The location and material of each of the principal synthetic-resin parts are shown below.



AB601424AB



AB601425AB

**SYNTHETIC-RESIN PARTS  
LOCATION OF SYNTHETIC-RESIN PARTS**

NO.	PART NAME	NAME OF RESIN	ABBREVIATION	HEAT-RESISTANT TEMP [°C (°F)]
1	Radiator grille	Acrylonitrile butadiene styrene	ABS	80 (176)
2	Door mirror cover (colour)			
3	Rear spoiler			
4	Roof antenna base	Acrylonitrile ethylene styrene	AES	80 (176)
5	Door mirror cover (black)	Acrylonitrile styrene acrylate	ASA(AAS)	80 (176)
6	Door mirror			
7	Headlight	Polycarbonate	PC	120 (248)
8	Rear door outside handle	Polycarbonate+Polyethylene terephthalate	PC+PET	120 (248)
9	Front door outside handle			
10	Rear splash shield	High density polyethylene	PE-HD (HDPE)	70 -90 (158 -194)
11	Front splash shield			
12	High-mounted stoplight	Polymethyl methacrylate	PMMA	80 (176)
13	Trunk lid light			
14	Front door trim lower	Polypropylene	PP	80 (176)
15	Inside rear view mirror			
16	Rear door trim			
17	Rear shelf trim			
18	Rear end trim			
19	Rear scuff plate			
20	Front scuff plate			
21	Cowl side trim			
22	Fender protector			
23	Fog light bezel <With fog light>			
24	Air intake bezel <Without fog light>			
25	Front bumper face			
26	Under grille			
27	Rear bumper face			
28	Front air dam			
29	Side air dam	Talc filled rubber modified polypropylene (20%)	PP+E/P-TD20	110 (230)
30	Front door trim upper	Talc filled polypropylene (10%)	PP-TD10 (PPF)	110 -120 (230 -248)
31	Center pillar trim lower			

**SYNTHETIC-RESIN PARTS  
LOCATION OF SYNTHETIC-RESIN PARTS**

NO.	PART NAME	NAME OF RESIN	ABBREVIATION	HEAT-RESISTANT TEMP [° C (° F)]
32	Front deck garnish	Talc filled polypropylene (20%)	PP-TD20 (PPF)	120 –130 (248 –266)
33	Instrument panel			
34	Front pillar trim			
35	Center pillar trim upper			
36	Rear pillar trim			
37	Cup holder			
38	Floor console			
39	Floor console panel			
40	Console side cover			
41	Roof drip molding	Polyvinyl chloride	PVC	80 (176)

**NOTE:**

- If the material symbols designated by the ISO differ from the old symbols, both are given, with the old symboling enclosed in brackets.  
ISO: International Standardization Organization.
- A slash (/) in the material symbol indicates that two different materials make two-layer construction. A plus sign (+) indicates that the two different materials mix each other.
- The indicated heat-resistant temperature for parts which are composed of two or more types of material is the value for the material with the lowest heat-resistant temperature.
- The material symbols for synthetic-resin parts are embossed on the parts in hidden places.