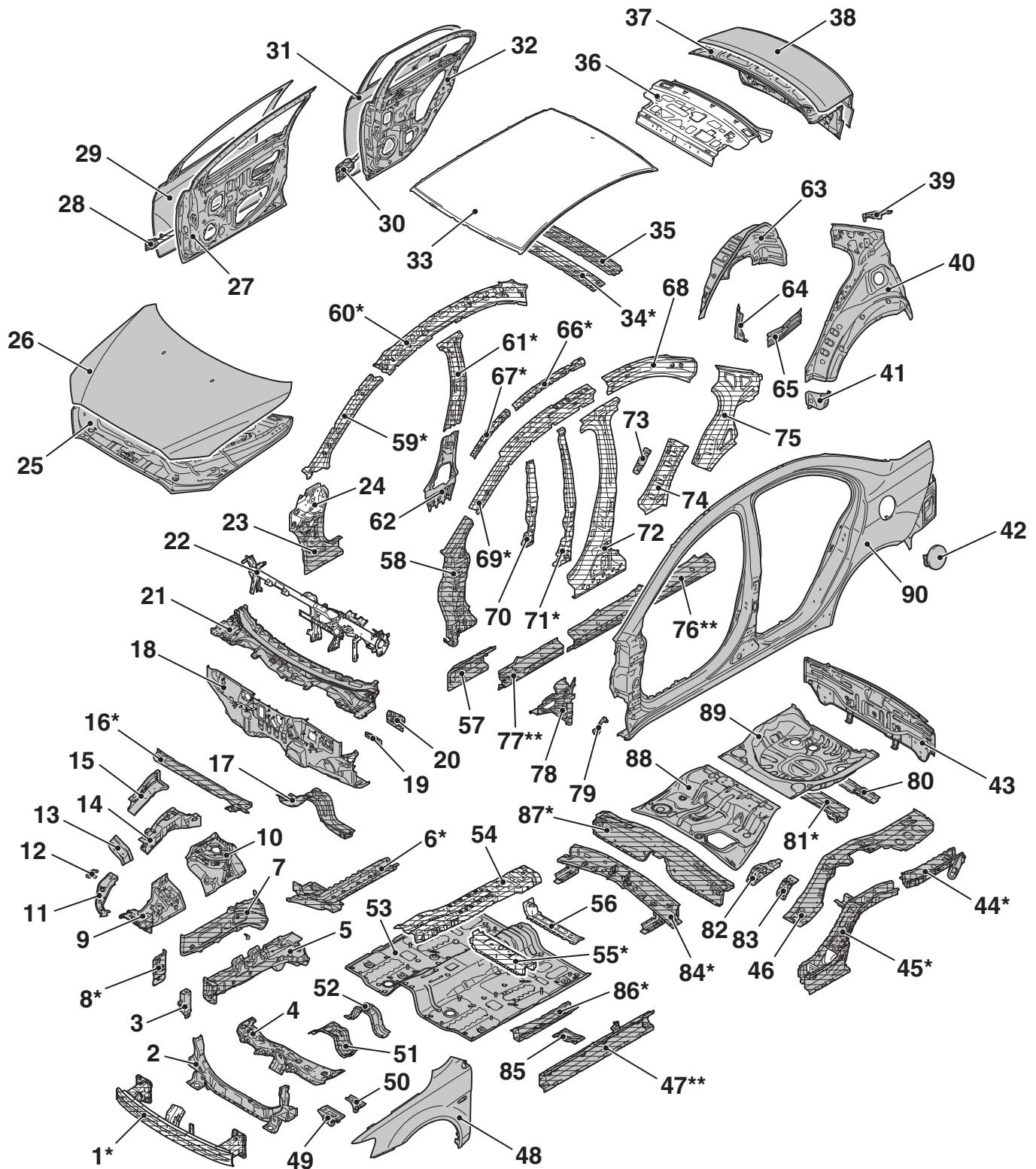

GROUP 1**BODY
CONSTRUCTION****CONTENTS**

BODY COMPONENTS	1-2	SIDE BODY	1-14
BODY MAIN CROSS-SECTIONAL VIEWS	1-4	REAR BODY	1-17
MAINTENANCE, SERVICEABILITY .	1-6	ROOF	1-18
BODY CONSTRUCTION CHARACTERISTICS	1-8	UNDER BODY	1-19
FRONT BODY	1-8	DOOR	1-22
		SILENCER APPLICATION LOCATIONS	1-24
		FOAMING MATERIAL USAGE LOCATIONS	1-25

BODY COMPONENTS



■ : Anti-corrosion steel panels

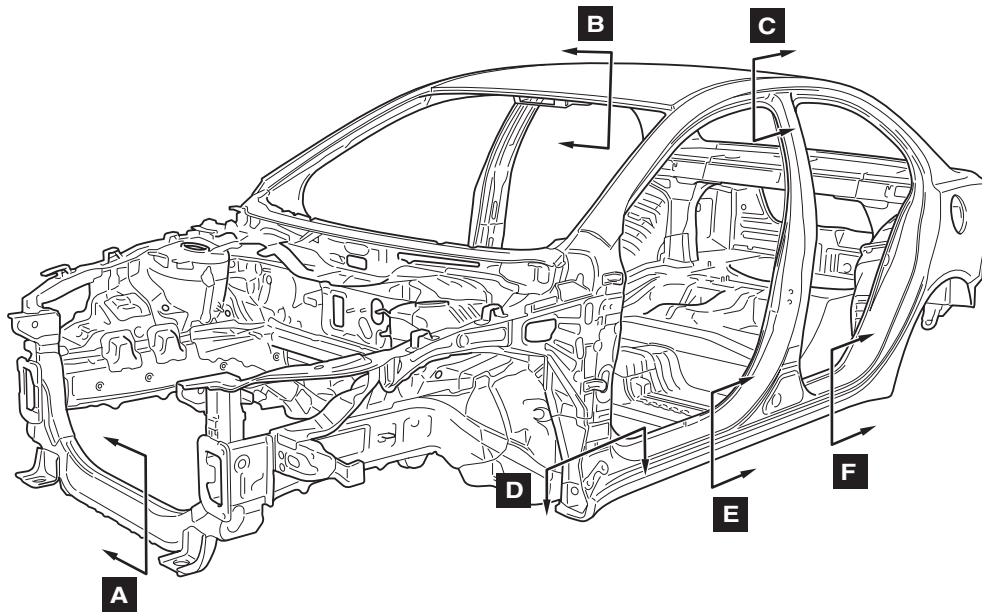
▨ : High-tensile steel panels (*: Indicates 590MPa-high-tensile steel panels.)

(**: Indicates 980MPa-ultra-high-tensile steel panels.)

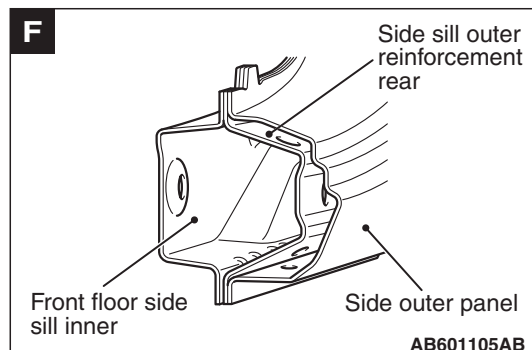
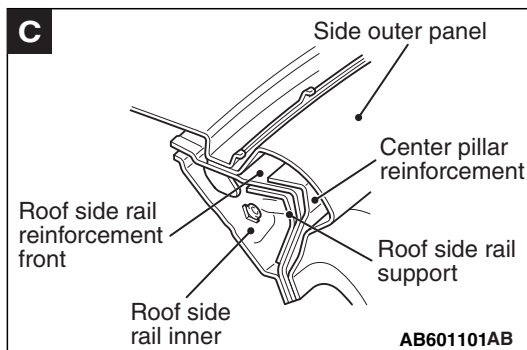
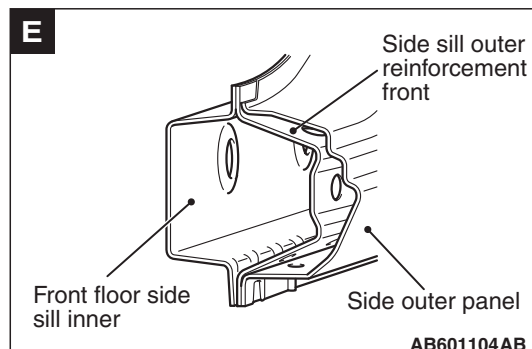
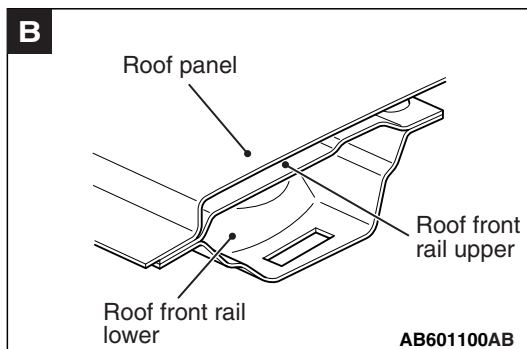
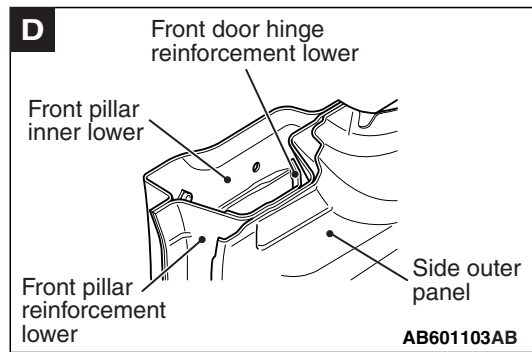
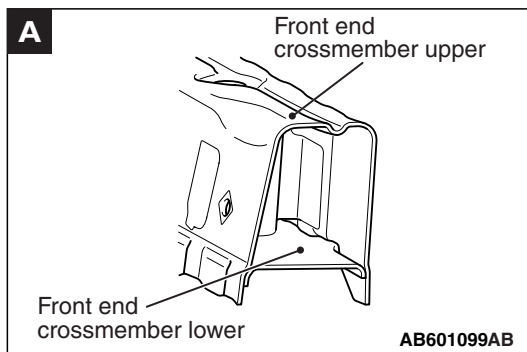
1. Front bumper back beam
2. Front end crossmember
3. Headlight support panel
4. Front end upper bar
5. Front sidemember inner
6. Front sidemember rear
7. Front sidemember outer
8. Front sidemember outer front
9. Front fender shield front
10. Front wheel house panel inner
11. Front end upper bar side
12. Front fender bracket upper front
13. Engine mounting gusset
14. Front upper frame inner
15. Front upper frame outer
16. Dash panel crossmember upper
17. Dash panel crossmember lower
18. Dash panel
19. Brake pedal support reinforcement
20. Brake pedal support bracket
21. Front deck
22. Front deck crossmember
23. Front pillar inner lower
24. Front pillar inner center
25. Hood inner panel
26. Hood outer panel
27. Front door inner panel
28. Front door side door beam
29. Front door outer panel
30. Rear door side door beam
31. Rear door outer panel
32. Rear door inner panel
33. Roof panel
34. Roof center bow lower
35. Roof center bow upper
36. Rear shelf panel
37. Trunk lid inner panel
38. Trunk lid outer panel
39. Curtain air bag bracket
40. Quarter inner panel
41. Quarter inner extension front
42. Fuel filler door panel
43. Rear end panel
44. Rear floor sidemember extension
45. Rear floor sidemember lower
46. Rear floor sidemember upper
47. Front floor side sill inner
48. Front fender
49. Battery bracket front
50. Battery bracket rear
51. Backbone crossmember front
52. Backbone crossmember rear
53. Front floor pan
54. Backbone reinforcement
55. Front floor crossmember front
56. Front floor crossmember rear
57. Side sill inner support front
58. Front pillar reinforcement lower
59. Front pillar inner upper
60. Roof side rail inner
61. Center pillar inner upper
62. Center pillar inner lower
63. Rear wheel house panel inner
64. Rear wheel house shield plate front
65. Rear quarter inner panel lower (Left side)
66. Roof side rail support
67. Front pillar support
68. Roof side rail reinforcement rear
69. Roof side rail reinforcement front
70. Rear door hinge reinforcement support
71. Rear door hinge reinforcement
72. Center pillar reinforcement
73. Rear door catch reinforcement
74. Rear pillar reinforcement lower
75. Rear pillar reinforcement
76. Side sill outer reinforcement rear
77. Side sill outer reinforcement front
78. Front upper frame outer rear
79. Front fender bracket lower
80. Rear floor crossmember rear
81. Rear floor crossmember front
82. Seat belt rear floor reinforcement (Right side)
83. Seat belt rear floor reinforcement (Left side)
84. Rear floor (rear seat) crossmember
85. Front floor reinforcement lower
86. Front floor sidemember front
87. Rear floor extension
88. Rear floor pan front
89. Rear floor pan rear
90. Side outer panel

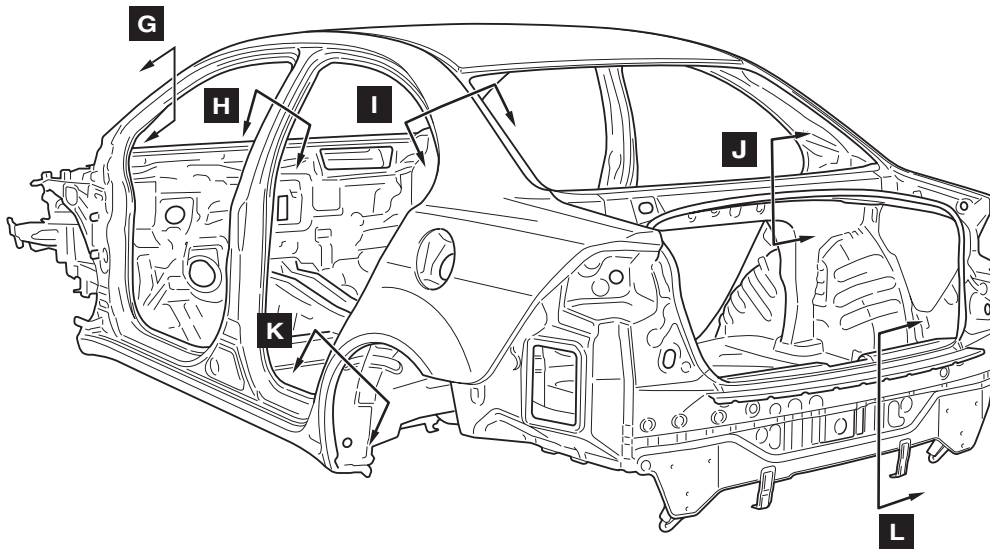
BODY MAIN CROSS-SECTIONAL VIEWS

M4010002000785

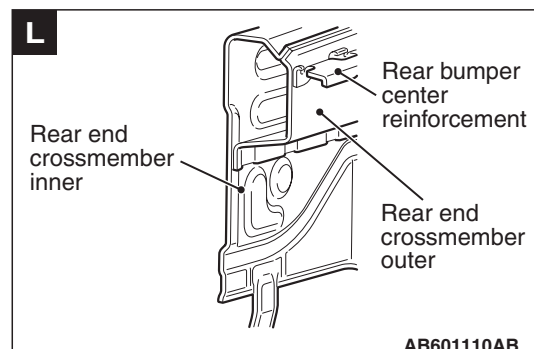
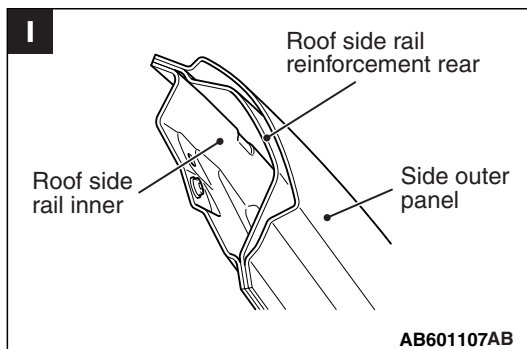
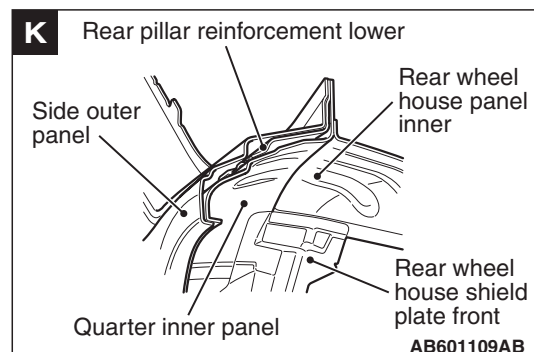
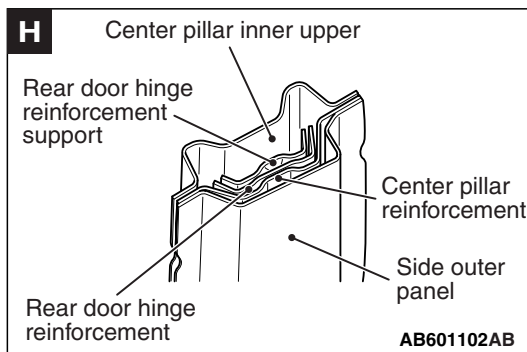
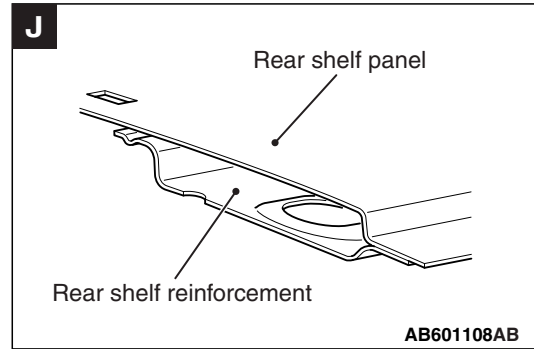
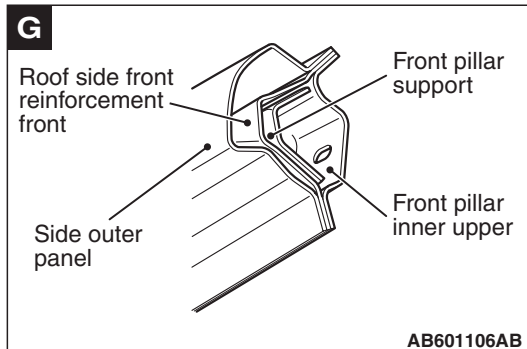


AB601072AB





AB601492AB

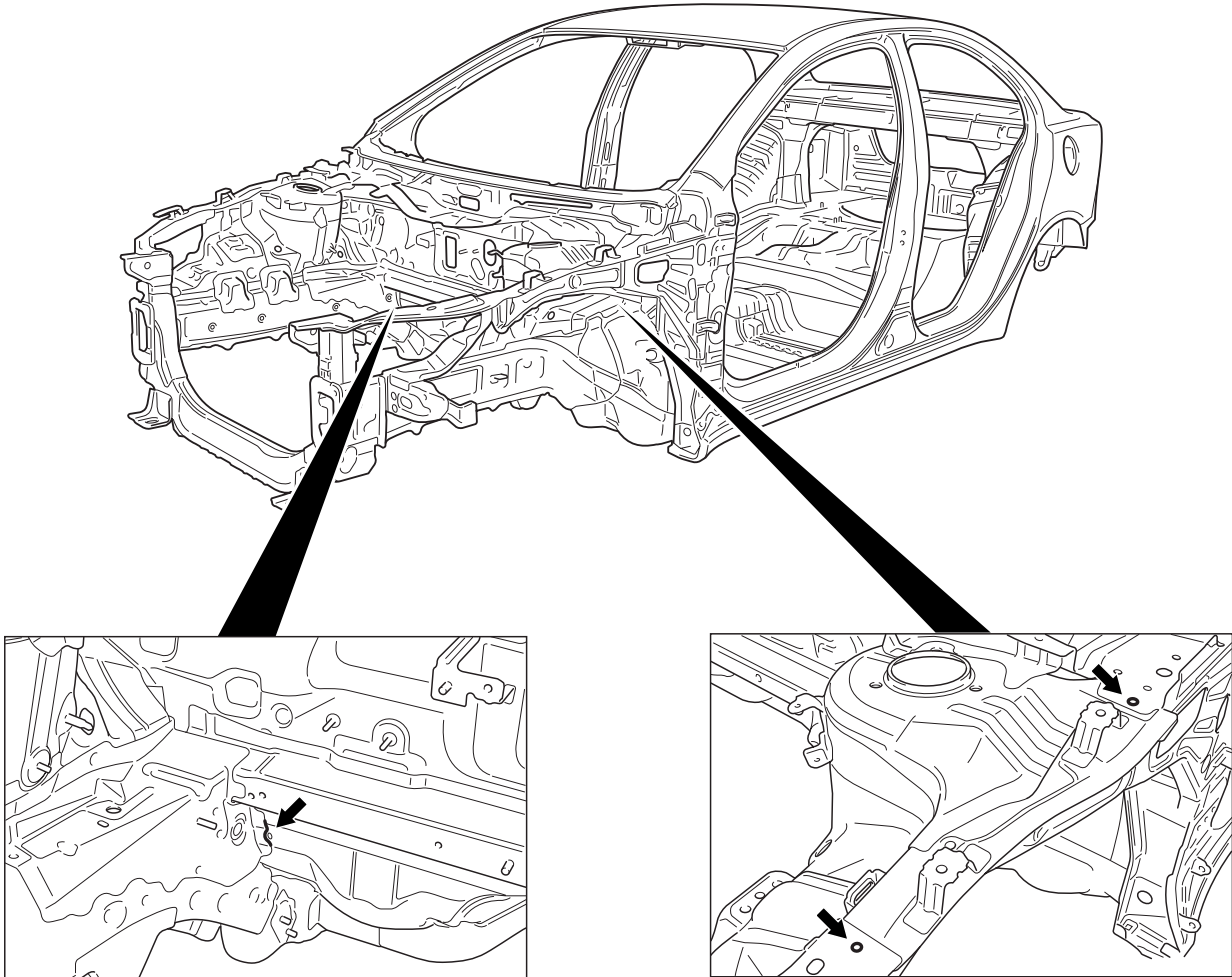


MAINTENANCE, SERVICEABILITY

M4010003000670

FENDER SHIELD

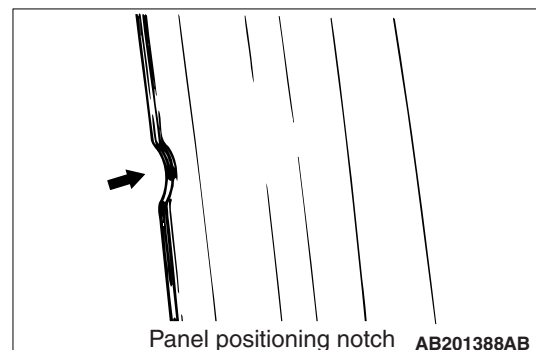
A positioning hole, lug, marking, and cut-out have been added on the front side member, front side member rear, and headlamp support panel to improve assembling workability during panel replacement.



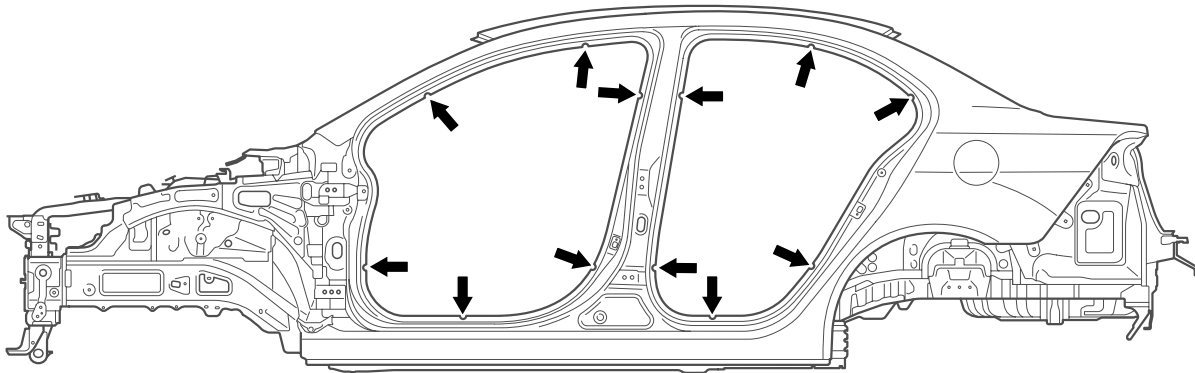
AB601196AB

SIDE STRUCTURE

A panel positioning notch has been added on the door opening to improve assembling workability when replacing the panel.



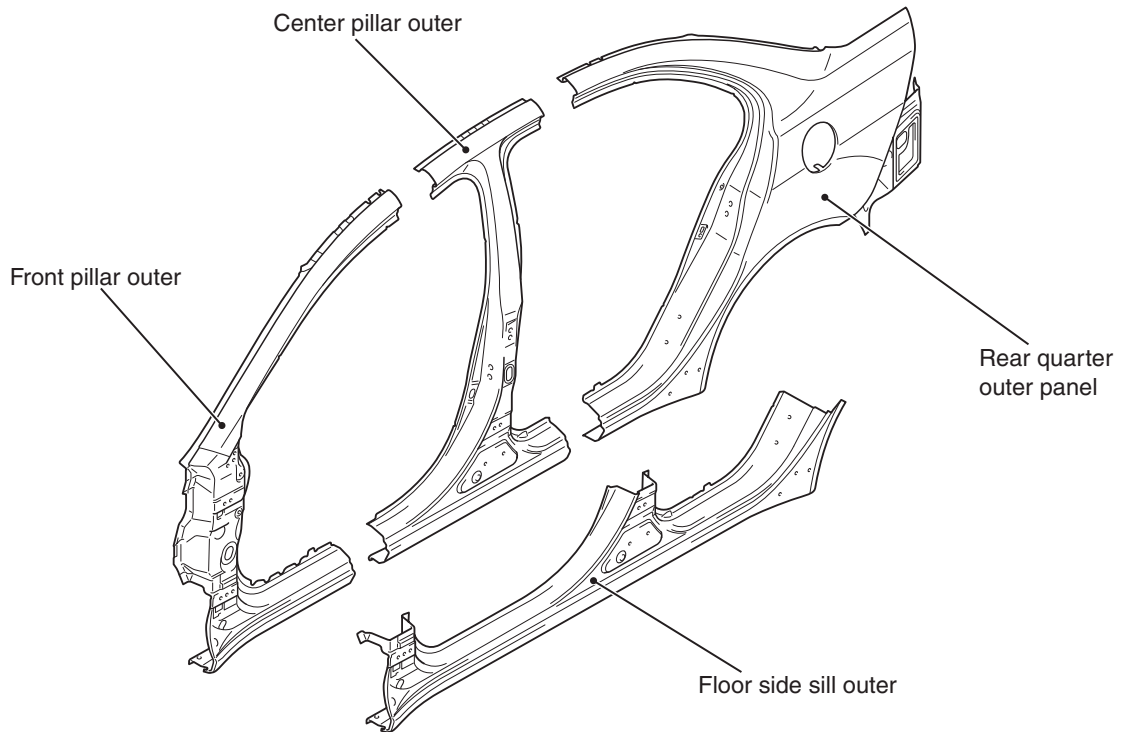
Panel positioning notch AB201388AB



AB601194AB

SIDE OUTER PANEL

The extra parts are supplied in 4 different cut forms as a result of employing the integrated side-frame side outer panel.



AB601082AB

BODY CONSTRUCTION CHARACTERISTICS

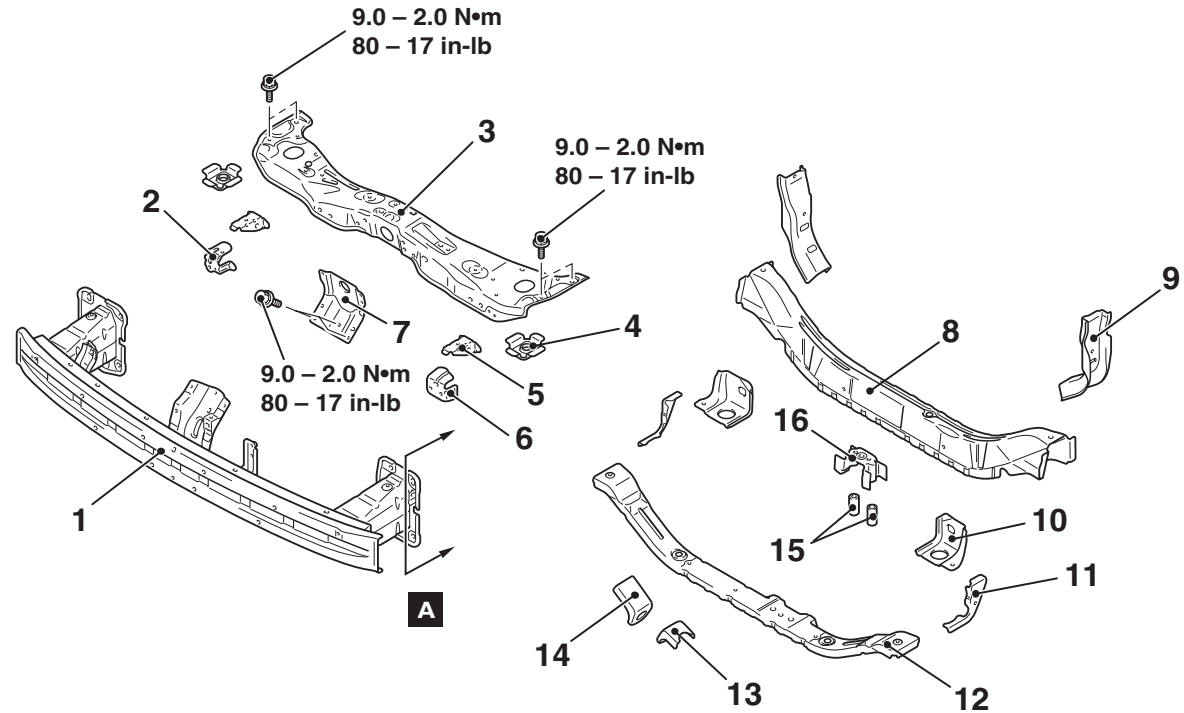
FRONT BODY

M4010010000810

HEADLIGHT SUPPORT

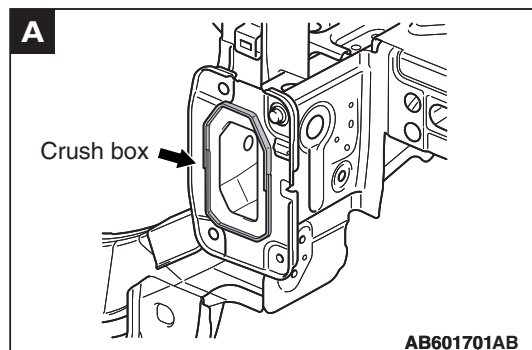
- The crush box structure, which has an octagonal cross-section at the front end of the front side-member, has been adopted. This structure can effectively absorb energy upon frontal impact and reduces the vehicle repair cost caused by a light collision.

- The bolt-on hood lock stay, and bolt-on front end upper bar are used to improve maintainability.



AB601683AB

1. Front bumper back beam
2. Bumper support bracket side
3. Front end upper bar
4. Radiator bracket upper
5. Bumper support bracket center
6. Front sensor reinforcement
7. Hood lock stay
8. Front end crossmember upper
9. Front end crossmember gusset
10. Radiator bracket lower A
11. Radiator bracket lower B
12. Front end crossmember lower
13. Shipping reinforcement front
14. Shipping hook front
15. Front No. 2 crossmember pipe
16. Front end crossmember bulkhead



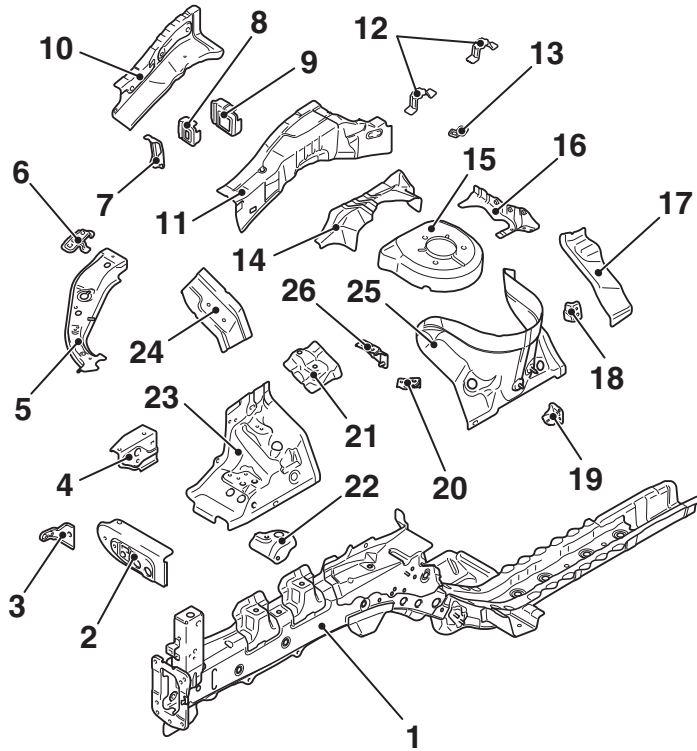
The crush box structure has been changed to straight type with an octagon cross-section so that the structure can effectively absorb energy from the impact at the time of collision.

FENDER SHIELD

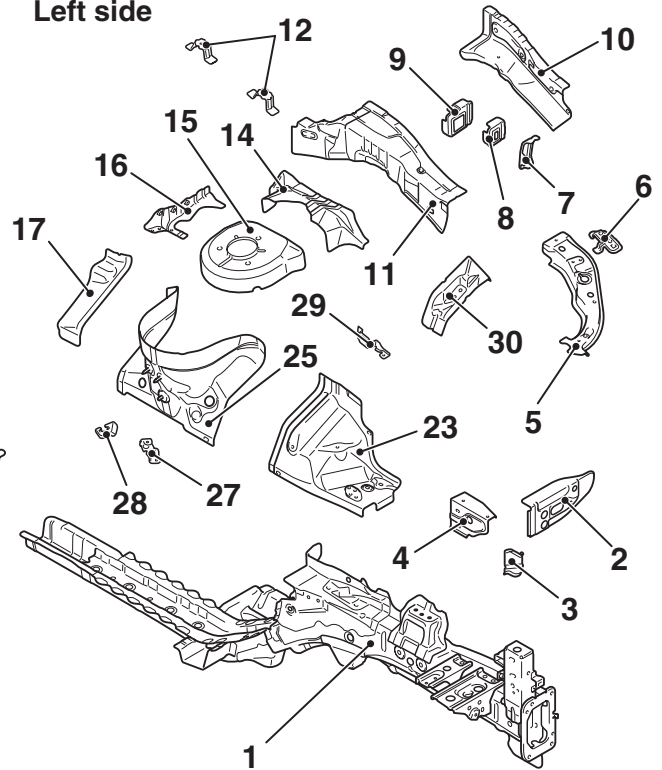
- The front frame structure is supported in three directions by the dash crossmember center, dash crossmember lower and front sidemember rear in order to improve the frontal collision characteristics, and increase the vehicle body rigidity.

- The padding structure of the fender has been adopted to efficiently absorb energy upon impact and improve the pedestrian protection capability.

Right side



Left side



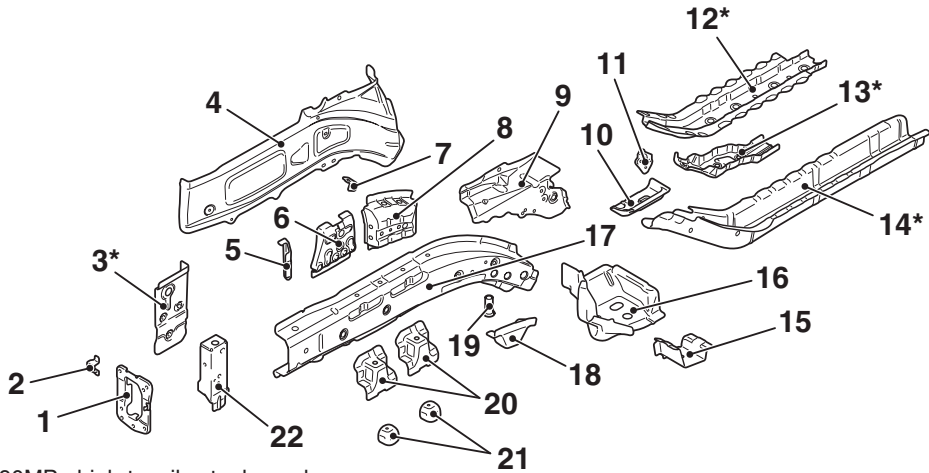
AB600956AB

- | | |
|--|---|
| <ol style="list-style-type: none"> 1. Front sidemember 2. Front fender gusset 3. Front fender lower bracket front inner 4. Upper side bar front 5. Front end upper bar side 6. Front fender bracket upper front 7. Upper frame bulkhead front 8. Upper frame bulkhead center 9. Upper frame bulkhead rear 10. Front upper frame outer 11. Front upper frame inner 12. Fender bracket upper center 2 13. Harness bracket 14. Spring house bracket reinforcement 15. Spring house bracket front | <ol style="list-style-type: none"> 16. Spring house corner gusset 17. Spring house panel rear 18. Horn bracket 19. Spring house harness bracket 20. Suction hose bracket 21. Engine mounting bracket upper 22. Condense tank reinforcement 23. Front fender shield 24. Engine mounting gusset 25. Spring house panel 26. Power steering reservoir tank bracket 27. Engine-ECU bracket 28. Clutch tube bracket 29. Relay box bracket 30. Transmission mounting gusset |
|--|---|

FRONT SIDEMEMBER REINFORCEMENT

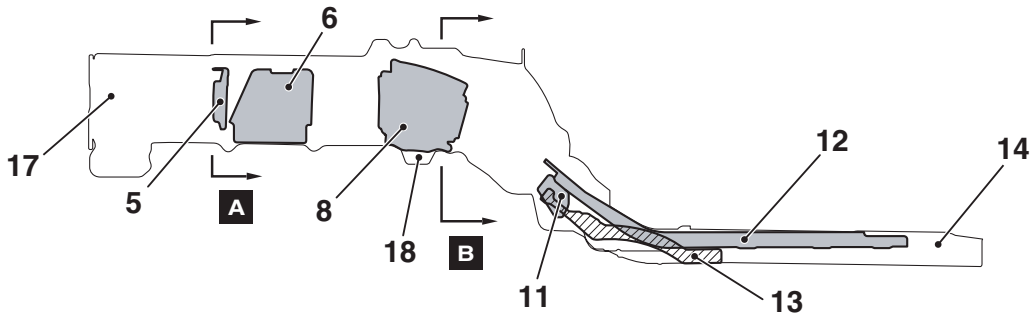
The 590-MPa class high tensile strength steel panels have been adopted for the front sidemember outer front, front sidemember reinforcement rear lower, front sidemember rear bulkhead, and front sidemember rear to improve the body rigidity.

Right side



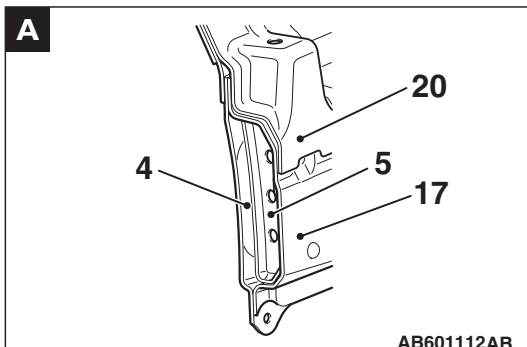
*: Indicates 590MPa-high-tensile steel panels.

AB600952AB

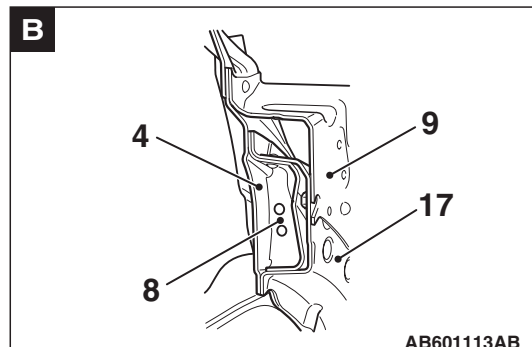


AB600954AB

- | | |
|--|--|
| 1. Front sidemember plate rear | 12. Front sidemember reinforcement rear lower |
| 2. Headlight bracket lower | 13. Front sidemember rear bulkhead |
| 3. Front sidemember outer front | 14. Front sidemember rear |
| 4. Front sidemember outer | 15. Dash crossmember extension lower |
| 5. Front sidemember bulkhead front | 16. Front sidemember brace lower |
| 6. Engine mounting bulkhead | 17. Front sidemember inner |
| 7. Front brake hose bracket | 18. Front suspension crossmember bracket front |
| 8. Front suspension crossmember bulkhead | 19. Pipe nut |
| 9. Front sidemember brace upper | 20. Engine mount bracket |
| 10. Tie down reinforcement front | 21. Engine mount reinforcement |
| 11. Height sensor bracket | 22. Headlight support panel |

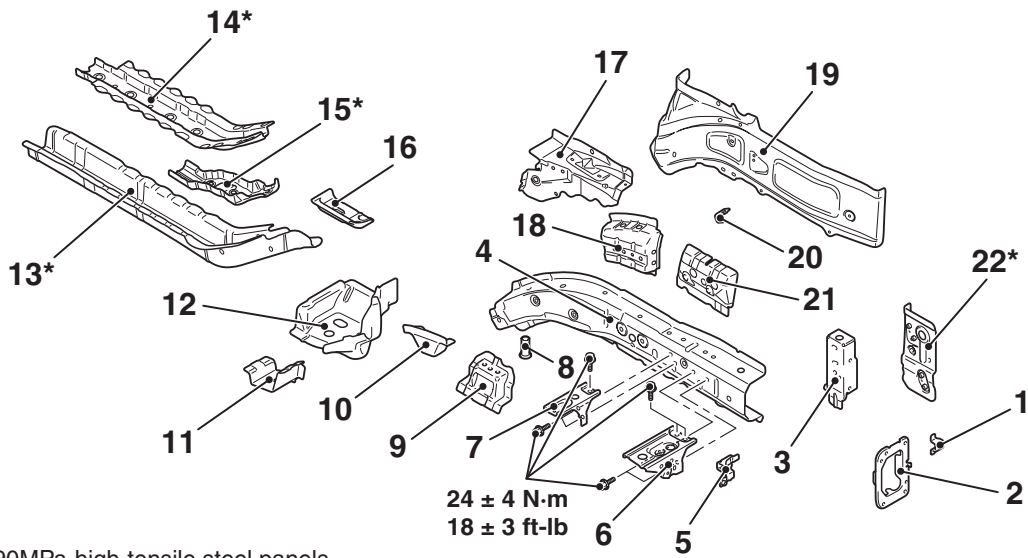


AB601112AB



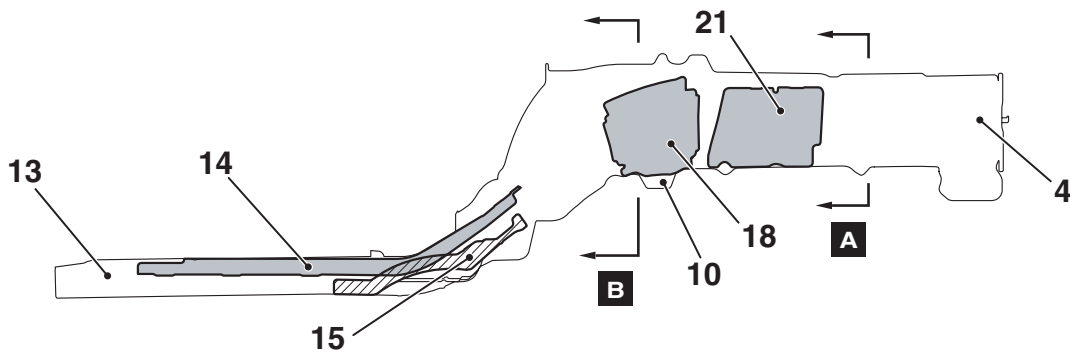
AB601113AB

Left side



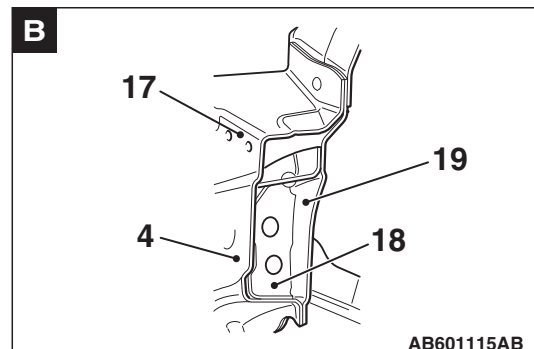
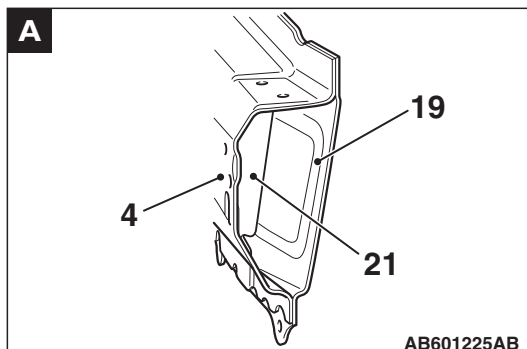
*: Indicates 590MPa-high-tensile steel panels.

AB600953AB



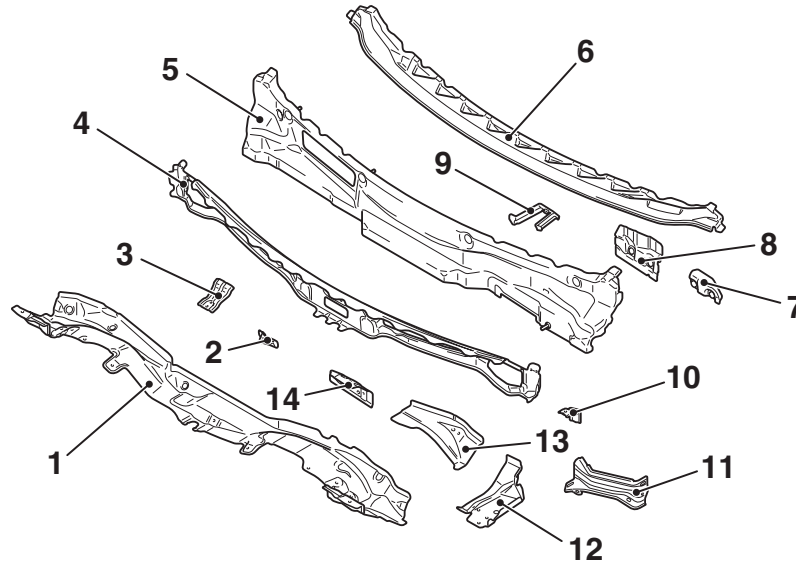
AB600955AB

- | | |
|--|---|
| 1. Headlight bracket lower | 12. Front sidemember brace lower |
| 2. Front sidemember plate rear | 13. Front sidemember rear |
| 3. Headlight support panel | 14. Front sidemember reinforcement rear lower |
| 4. Front sidemember inner | 15. Front sidemember rear bulkhead |
| 5. Connector bracket | 16. Tie down reinforcement front |
| 6. Battery bracket front | 17. Front sidemember brace upper |
| 7. Battery bracket rear | 18. Front suspension crossmember bulkhead |
| 8. Pipe nut | 19. Front sidemember outer |
| 9. Transmission mounting bracket | 20. Front brake hose bracket |
| 10. Front suspension crossmember bracket front | 21. Transmission mounting bulkhead |
| 11. Dash crossmember extension lower | 22. Front sidemember outer front |



FRONT DECK

The impact absorbing opening on the cowl top outer reinforcement has been added to efficiently absorb energy upon impact and improve the pedestrian protection capability.

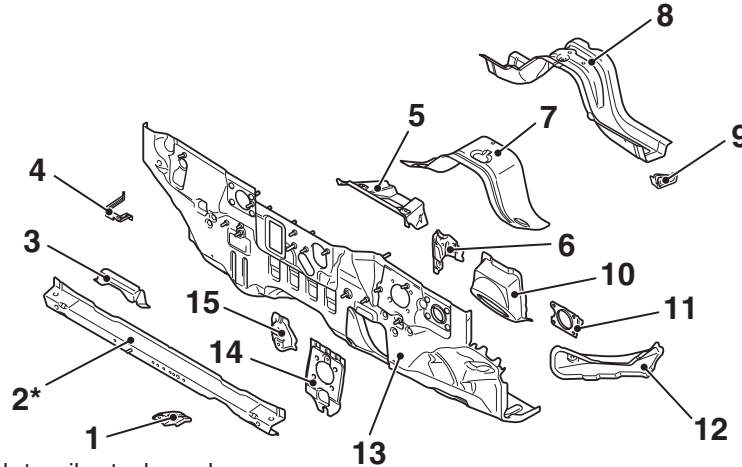


- | | |
|--|--|
| <ol style="list-style-type: none"> 1. Cowl top panel lower 2. Wiper B bracket 3. Cowl top stay bracket rear 4. Cowl top outer reinforcement upper 5. Cowl top panel inner 6. Cowl top panel outer 7. Clutch pedal support bracket <M/T> | <ol style="list-style-type: none"> 8. Brake pedal support bracket 9. Deck crossmember stay bracket 10. Fender bracket upper rear 11. Upper frame to front pillar brace 12. Upper frame extension inner 13. Cowl top outer reinforcement lower 14. Brake pedal support reinforcement |
|--|--|

AB601010AB

DASH PANEL

- The front frame structure is supported in three directions by the dash crossmember center, dash crossmember lower and front sidemember rear in order to improve the frontal collision characteristics and increase the vehicle body rigidity.
- The 590-MPa class high tensile strength steel panels have been adopted for the dash panel crossmember center to improve the body rigidity.



*: Indicates 590MPa-high-tensile steel panels.

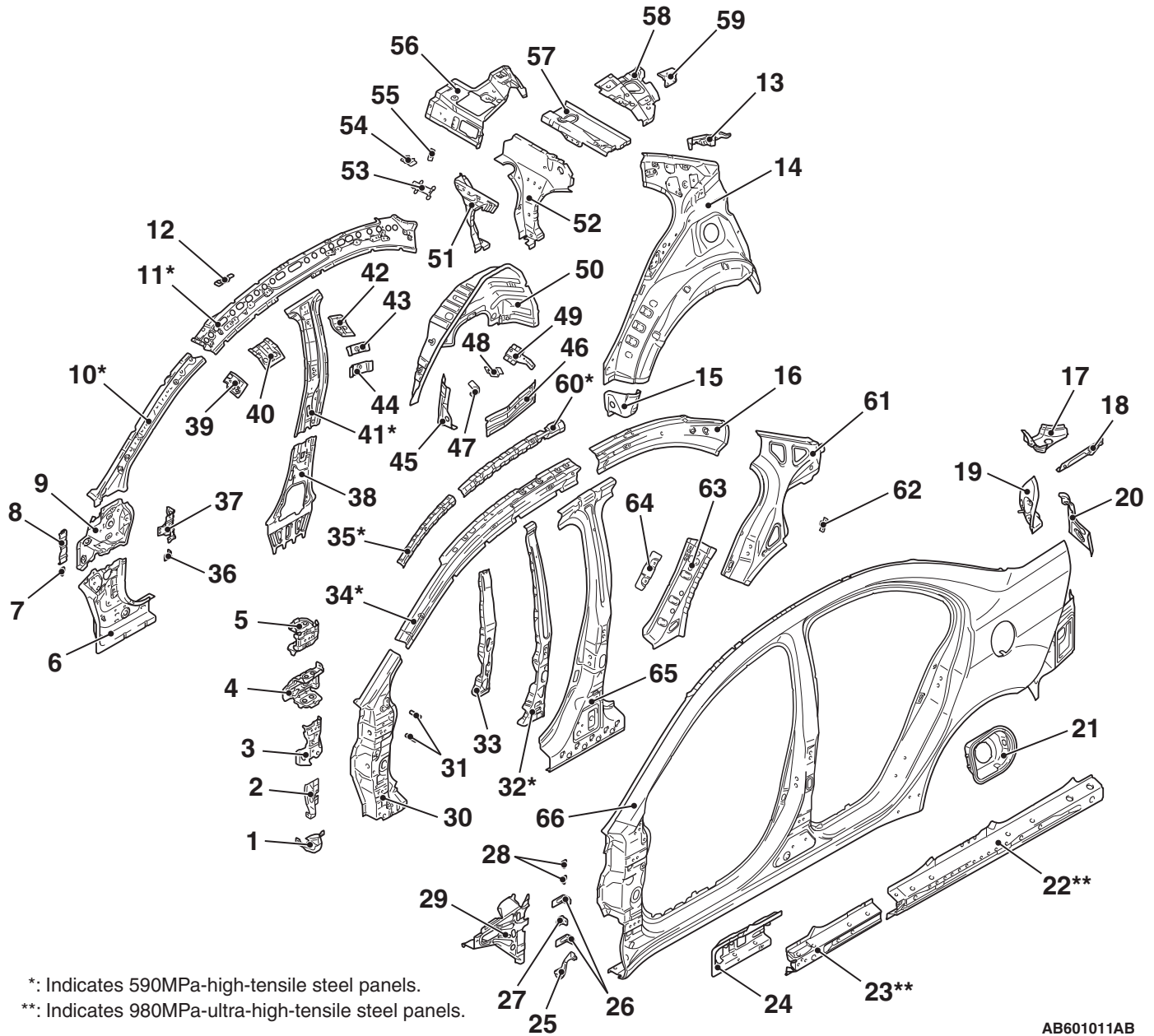
AB601684AB

- | | |
|---|---|
| <ol style="list-style-type: none"> 1. Brake tube bracket 2. Dash panel crossmember center 3. Dash crossmember extension 4. Dash heat protector bracket 5. Backbone reinforcement front 6. Accelerator pedal bracket 7. Dash panel lower 8. Dash crossmember lower | <ol style="list-style-type: none"> 9. Dash crossmember lower bulkhead 10. Steering shaft bracket 11. Clutch pedal reinforcement lower <M/T> 12. Dash crossmember side 13. Dash panel 14. Dash panel reinforcement 15. Canister bracket |
|---|---|

SIDE BODY

SIDE STRUCTURE

The 590-MPa class high tensile strength steel panels or 980-MPa class ultra high tensile strength steel panels have been adopted for the front pillar, center pillar, side sill, and roof side rail to improve the body rigidity.



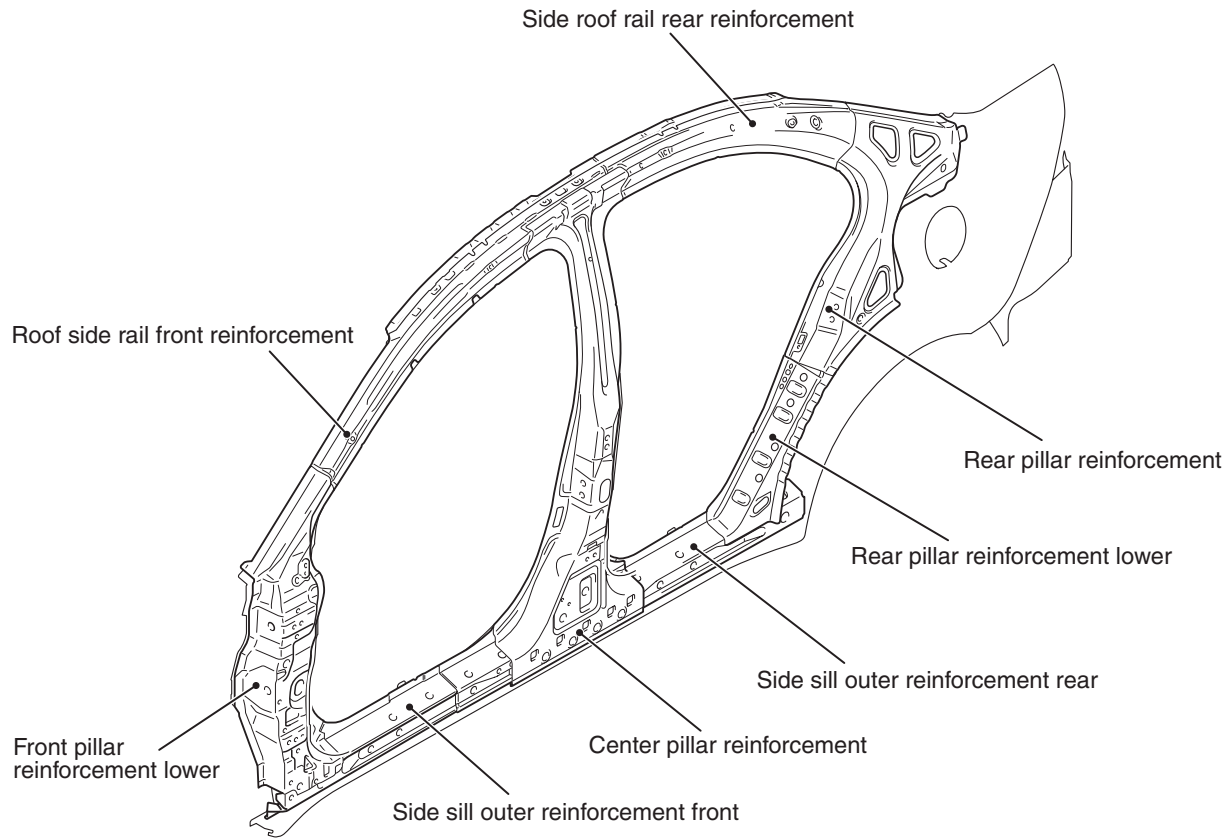
AB601011AB

- 1. Front pillar outer extension lower
- 2. Front pillar outer extension upper
- 3. Front door hinge reinforcement lower
- 4. Front pillar reinforcement center bulkhead
- 5. Front door hinge reinforcement upper
- 6. Front pillar inner lower
- 7. Harness bracket
- 8. Deck crossmember bracket (Right side)
- 9. Front pillar inner center
- 10. Front pillar inner upper
- 11. Roof side rail inner
- 12. Bracket C
- 13. Curtain air bag bracket
- 14. Quarter inner panel
- 15. Quarter inner extension front
- 16. Roof side rail reinforcement rear
- 17. Quarter outer upper extension
- 18. Quarter outer upper side extension
- 19. Rear combination light housing
- 20. Quarter corner panel

21. Fuel filler neck bracket (Left side)
22. Side sill outer reinforcement rear
23. Side sill outer reinforcement front
24. Side sill inner support front
25. Front fender bracket lower
26. Cowl side trim bracket
27. Fender bracket
28. Fender bracket
29. Front upper frame outer rear
30. Front pillar reinforcement lower
31. Deck support pipe (Left side)
32. Rear door hinge reinforcement
33. Rear door hinge reinforcement support
34. Roof side rail reinforcement front
35. Front pillar support
36. Cowl side trim bracket (Right side)
37. Hood opener bracket
38. Center inner pillar lower
39. Roof rail front extension
40. Roof rail center extension
41. Center inner pillar upper
42. Roof rail rear extension
43. Center pillar seat belt reinforcement upper
44. Center pillar seat belt reinforcement lower
45. Rear wheel house shield plate front
46. Rear quarter inner panel lower (Left side)
47. Filler pipe MTG bracket (Left side)
48. Head restraint bracket (Left side)
49. Harness bracket (Right side)
50. Rear wheel house panel inner
51. Rear seat back brace front
52. Rear seat back brace rear
53. Harness bracket (Left side)
54. Plate rear seat back reinforcement
55. Rear seat hook A
56. Rear shelf upper brace
57. Brace rear seat back bulkhead
58. Rear seat belt reinforcement
59. Subwoofer upper bracket <GTS>
60. Roof side rail support
61. Rear pillar reinforcement
62. Nut plate
63. Rear pillar reinforcement lower
64. Rear door catch reinforcement
65. Center pillar reinforcement
66. Side outer panel

SIDE STRUCTURE REINFORCEMENT

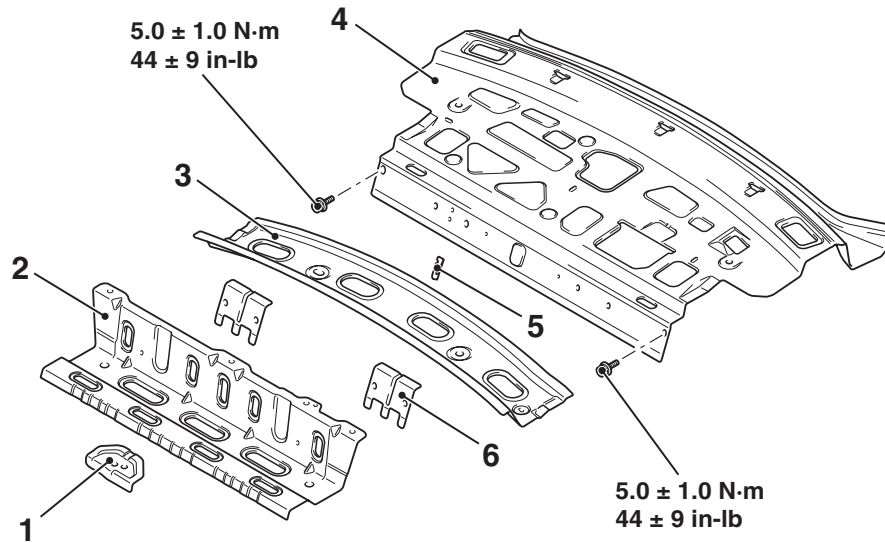
The ring structure of the side structure reinforcement has been adopted to improve the collision characteristics and the rigidity of the whole vehicle.



AB601202AB

REAR BODY
REAR DECK

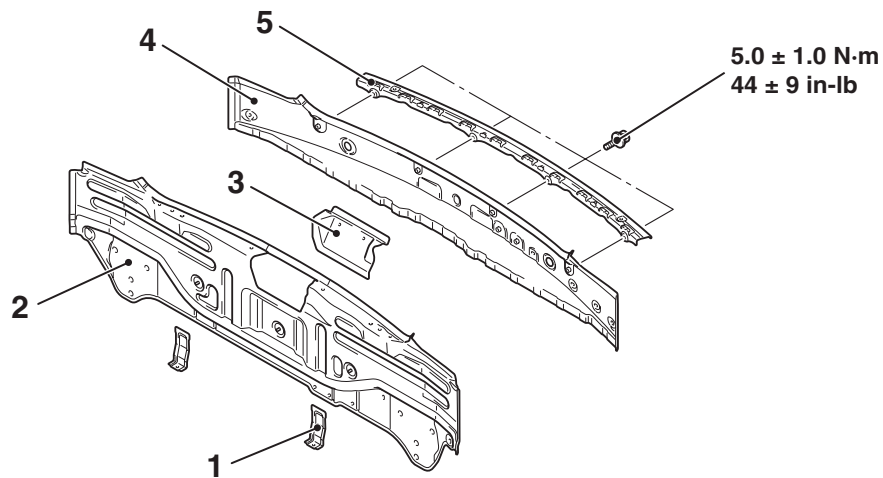
M4010012000582



AB601685AB

- | | |
|-----------------------------------|---------------------------------|
| 1. Seat belt reinforcement center | 4. Rear shelf panel |
| 2. Rear shelf extension | 5. Rear seat hook A |
| 3. Rear shelf reinforcement | 6. Rear seat back reinforcement |

REAR END CROSSMEMBER



AB601686AB

- | | |
|------------------------------------|-------------------------------------|
| 1. Rear bumper side bracket | 4. Rear end crossmember outer |
| 2. Rear end crossmember inner | 5. Rear bumper center reinforcement |
| 3. Trunk lid striker reinforcement | |

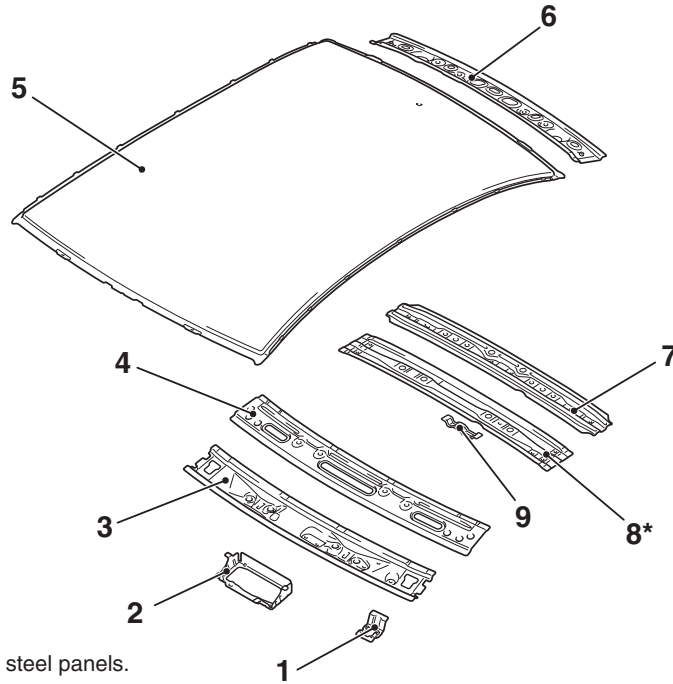
ROOF

M4010013000853

- The closed section structure has been adopted to the front roof rail, roof bow center and rear roof rail to reduce vibration and noise and to improve the rigidity.

- The 590-MPa class high tensile strength steel panels have been adopted for the roof center bow lower to improve the body rigidity.

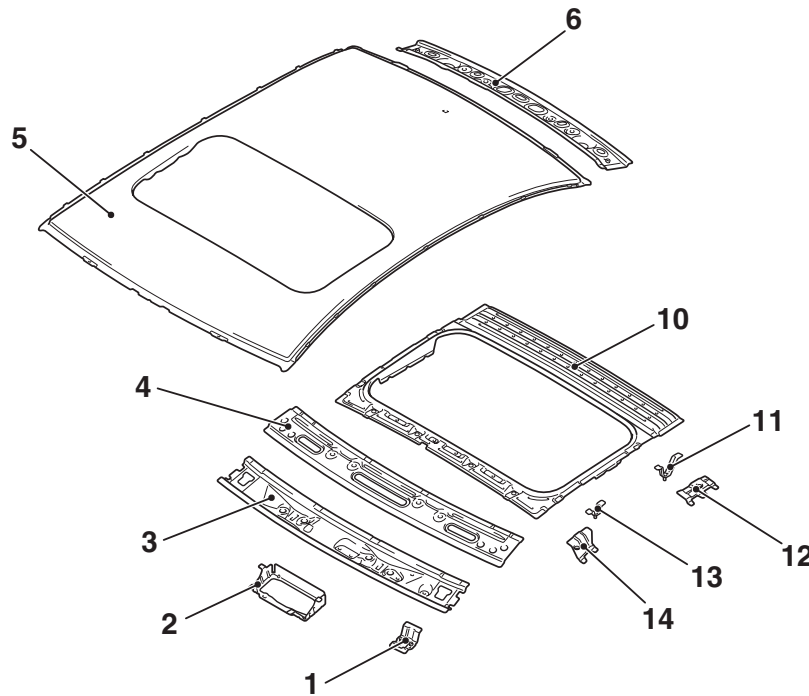
Without sunroof



*: Indicates 590MPa-high-tensile steel panels.

AB601687AB

Sunroof



AB601688AB

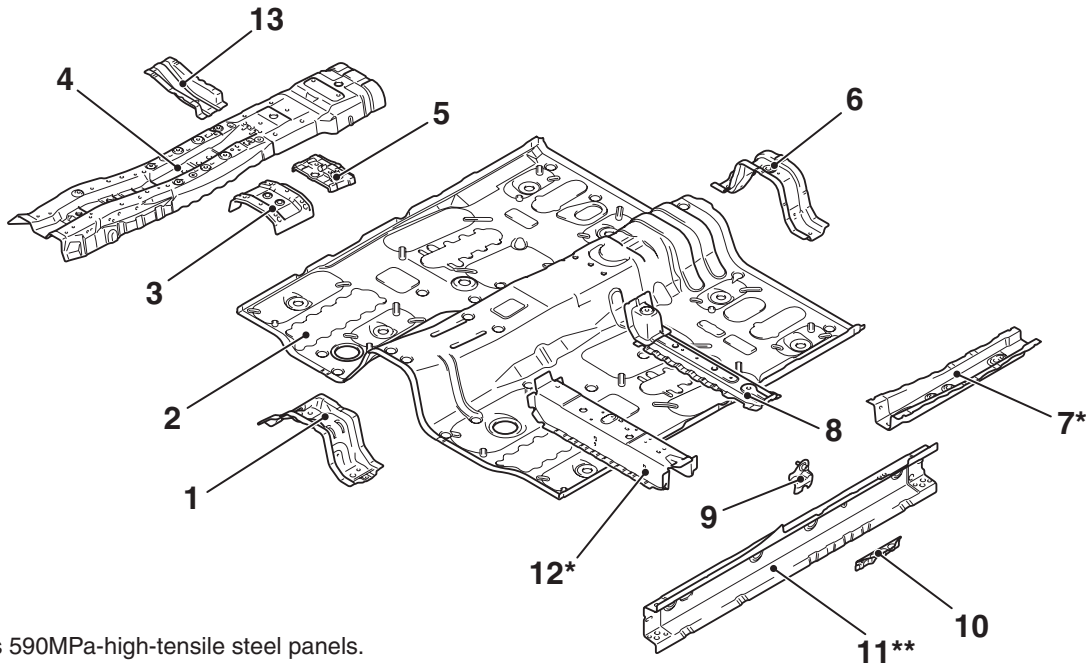
- | | |
|--------------------------|------------------------------|
| 1. Sunvisor bracket | 8. Roof center bow lower |
| 2. Maplamp bracket | 9. Room light bracket |
| 3. Roof front rail lower | 10. Roof panel reinforcement |
| 4. Roof front rail upper | 11. Bracket A |
| 5. Roof panel | 12. Set rear bracket |
| 6. Roof rear rail | 13. Bracket B |
| 7. Roof center bow upper | 14. Set front bracket |

UNDER BODY

M4010014000812

FRONT FLOOR

The 590-MPa class high tensile strength steel panels have been adopted for the front floor sidemember front and front floor crossmember front, and the 980-MPa class ultra high tensile strength steel panels for the front floor sidemember front, to improve the body rigidity.



*: Indicates 590MPa-high-tensile steel panels.

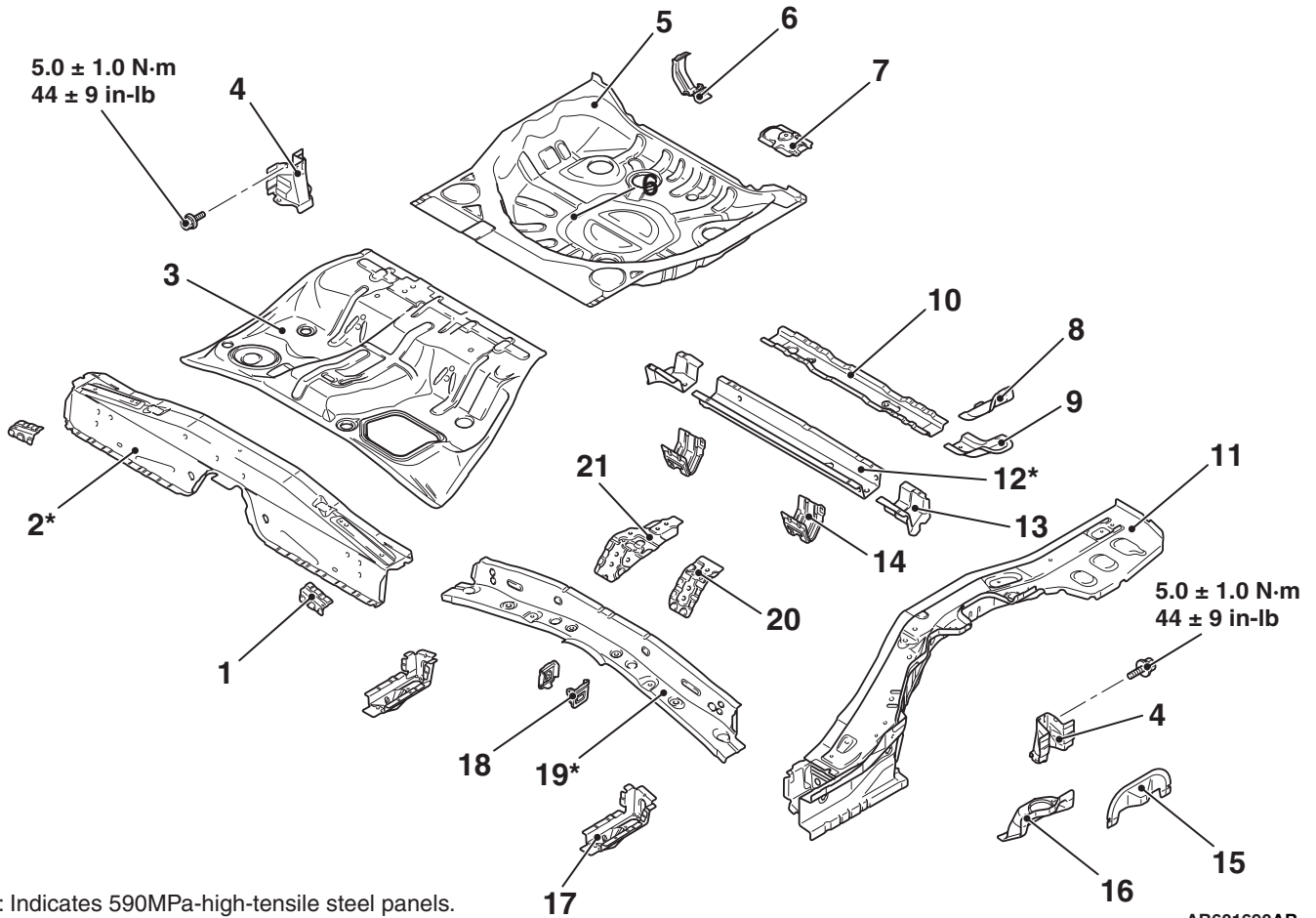
** : Indicates 980MPa-ultra-high-tensile steel panels.

AB601689AB

- | | |
|---|---|
| <ul style="list-style-type: none"> 1. Backbone crossmember front 2. Front floor pan 3. Parking brake lever reinforcement 4. Backbone reinforcement 5. Parking brake cable reinforcement 6. Backbone crossmember rear 7. Front floor sidemember front | <ul style="list-style-type: none"> 8. Front floor crossmember rear 9. Seat belt reinforcement 10. Front floor side sill inner reinforcement center 11. Front floor side sill inner 12. Front floor crossmember front 13. Front floor reinforcement lower (Right side) |
|---|---|

REAR FLOOR

The 590-MPa class high tensile strength steel panels have been adopted for the rear floor extension, rear floor crossmember front, and rear seat crossmember to improve the body rigidity.



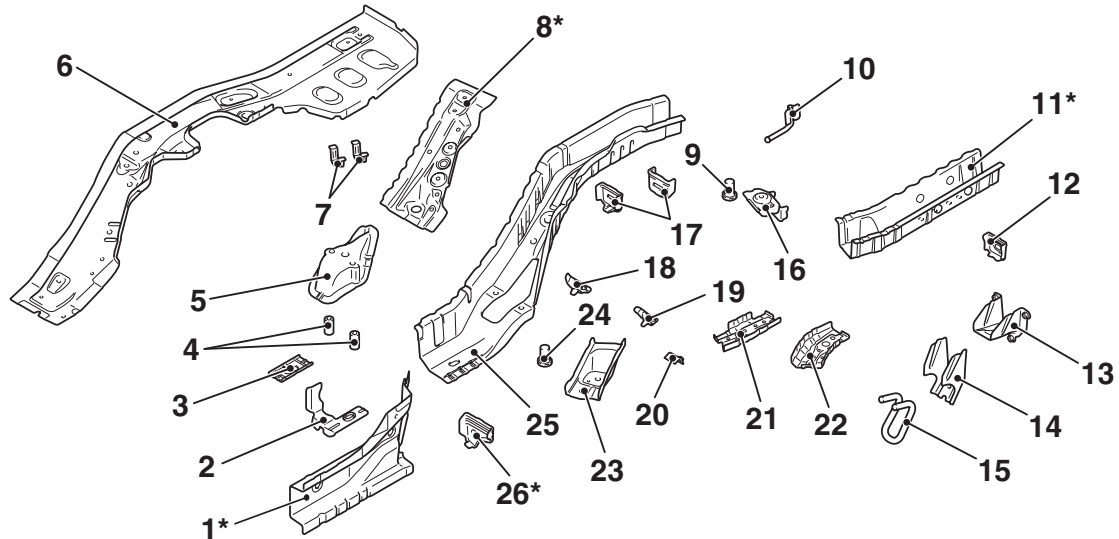
*: Indicates 590MPa-high-tensile steel panels.

AB601690AB

- | | |
|--|--|
| <ul style="list-style-type: none"> 1. Extension rear floor reinforcement side 2. Rear floor extension 3. Rear floor pan front 4. Rear spring house reinforcement 5. Rear floor pan rear 6. Jack bracket 7. Spare tire bracket 8. Rear floor crossmember extension rear upper 9. Rear floor crossmember extension rear 10. Rear floor crossmember rear 11. Rear floor sidemember | <ul style="list-style-type: none"> 12. Rear floor crossmember front 13. Rear floor crossmember extension 14. Fuel tank rear bracket 15. Rear spring house panel 16. Rear spring house bracket 17. Sidemember front floor extension 18. Rear seat crossmember bulkhead inner 19. Rear seat crossmember 20. Seat belt rear floor reinforcement (Left side) 21. Seat belt rear floor reinforcement (Right side) |
|--|--|

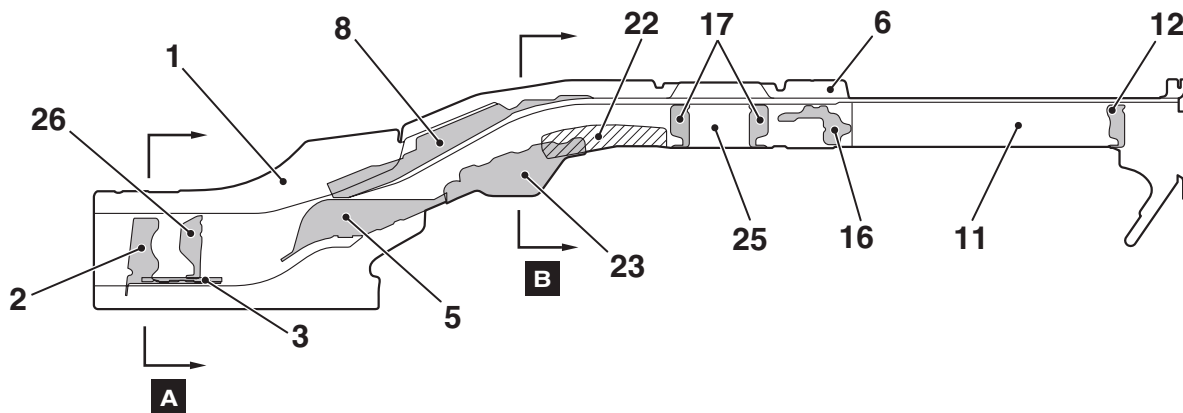
REAR FLOOR SIDEMEMBER REINFORCEMENT

The 590-MPa class high tensile strength steel panels have been adopted for the rear floor side sill inner, rear floor sidemember reinforcement, rear floor sidemember extension, and rear floor sidemember bulkhead to improve the body rigidity.



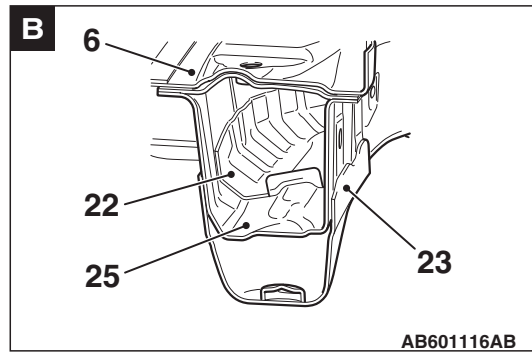
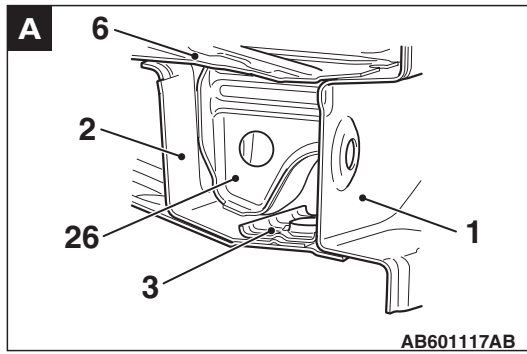
*: Indicates 590MPa-high-tensile steel panels.

AB601581AB



AB601691AB

- | | |
|--|---|
| 1. Rear floor side sill inner | 15. Rear shipping hook |
| 2. Rear floor sidemember extension front | 16. Rear suspension bracket rear |
| 3. Rear tie down plate | 17. Rear floor sidemember bulkhead rear |
| 4. Front No. 2 crossmember pipe | 18. Rear parking brake cable rear bracket (Right side) |
| 5. Trailing arm bracket | 19. Rear parking brake cable rear bracket (Left side) |
| 6. Rear floor sidemember upper | 20. Rear brake hose bracket |
| 7. Canister bracket | 21. Rear floor sidemember rear reinforcement (Right side) |
| 8. Rear floor sidemember reinforcement | 22. Rear floor sidemember rear reinforcement (Left side) |
| 9. Pipe nut | 23. Rear suspension bracket front |
| 10. Muffler hanger rear | 24. Pipe nut |
| 11. Rear floor sidemember extension | 25. Rear floor sidemember lower |
| 12. Rear floor sidemember extension bulkhead | 26. Rear floor sidemember bulkhead |
| 13. Rear bumper support | |
| 14. Rear shipping hook reinforcement | |



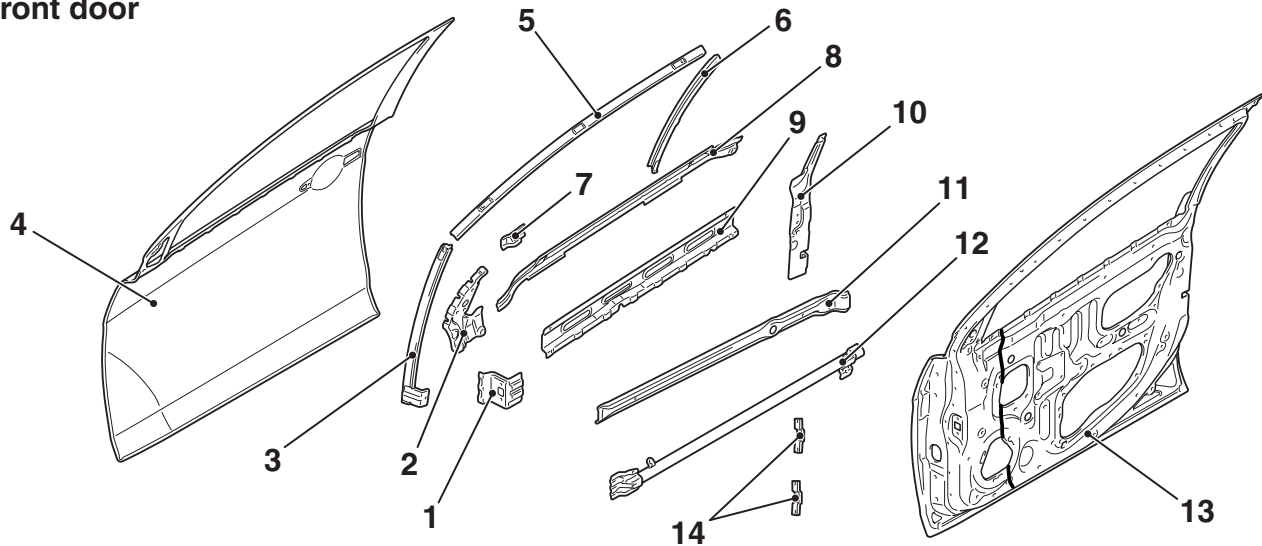
DOOR

An uneven thickness steel sheet* has been used for the front and rear door inner panels to make the forward part of the vehicle thicker for reduction in vehicle weight and higher rigidity.

*NOTE: *: A steel sheet of varying thickness that is welded into one steel sheet.*

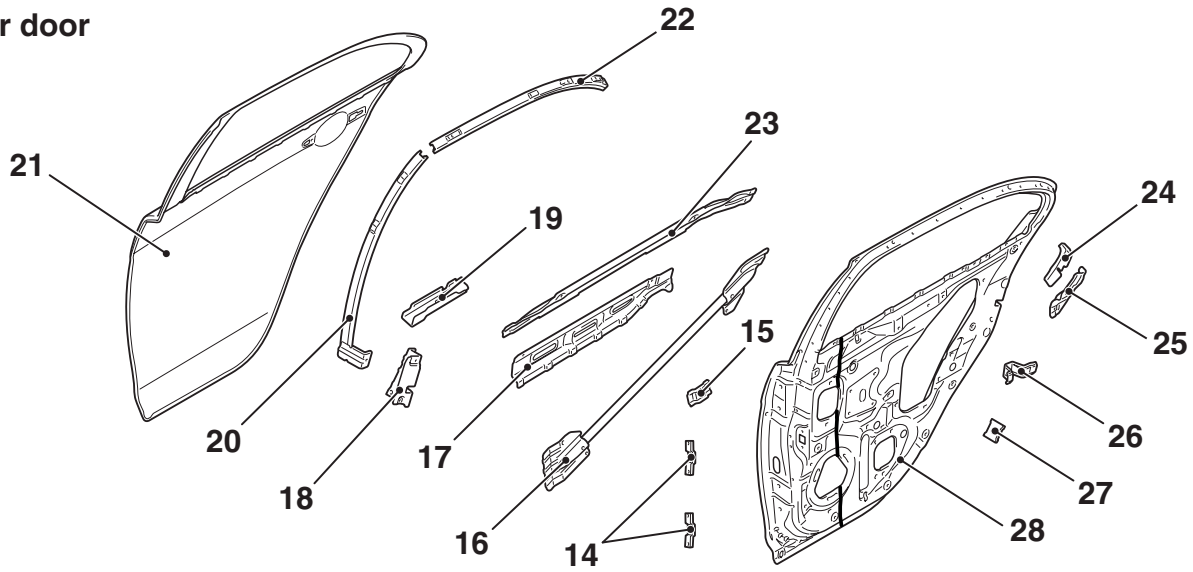
M4010015000633

Front door



AB601048AB

Rear door



AB601049AB

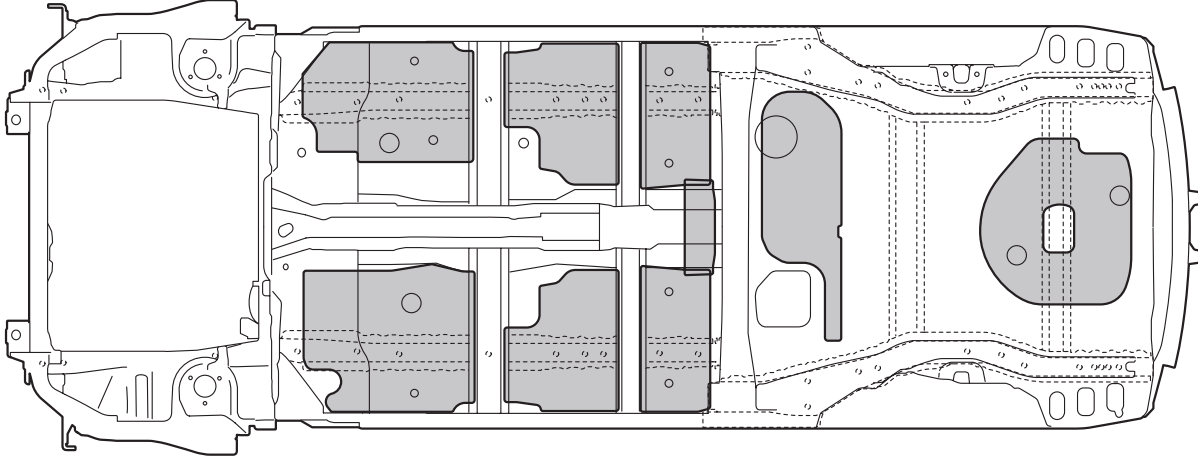
- | | |
|--|--|
| 1. Front door checker reinforcement | 15. Rear door inside handle bracket |
| 2. Front door mirror reinforcement | 16. Rear door side door beam |
| 3. Front door window sash front | 17. Rear door beltline inner reinforcement |
| 4. Front door outer panel | 18. Rear door latch reinforcement |
| 5. Front door window sash upper | 19. Rear door beltline bracket |
| 6. Front door window sash rear | 20. Rear door window sash front |
| 7. Front door inside handle bracket | 21. Rear door outer panel |
| 8. Front door beltline outer reinforcement | 22. Rear door window sash upper |
| 9. Front door beltline inner reinforcement | 23. Rear door beltline outer reinforcement |
| 10. Front door latch reinforcement | 24. Rear door stat corner bracket |
| 11. Front door outer stiffner | 25. Rear door sash reinforcement |
| 12. Front door side door beam | 26. Rear door window sash lower bracket |
| 13. Front door inner panel | 27. Nut plate |
| 14. Nut plate | 28. Rear door inner panel |

SILENCER APPLICATION LOCATIONS

M4010005000836

A silencer (MD-12) has been affixed on the upper surface of the floor for vibration damping.

NOTE: MD-12 is a high-performance sheet made of asphalt, to which mica, heat cured resin, and so on are added to improve damping performance.



■ : 3.2 mm thick MD-12 [Place two 1.6 mm melting sheet one on top of another.]

AB601192AB

NOTE: () indicates the number of melting sheets that are used for repair.

FOAMING MATERIAL USAGE LOCATIONS

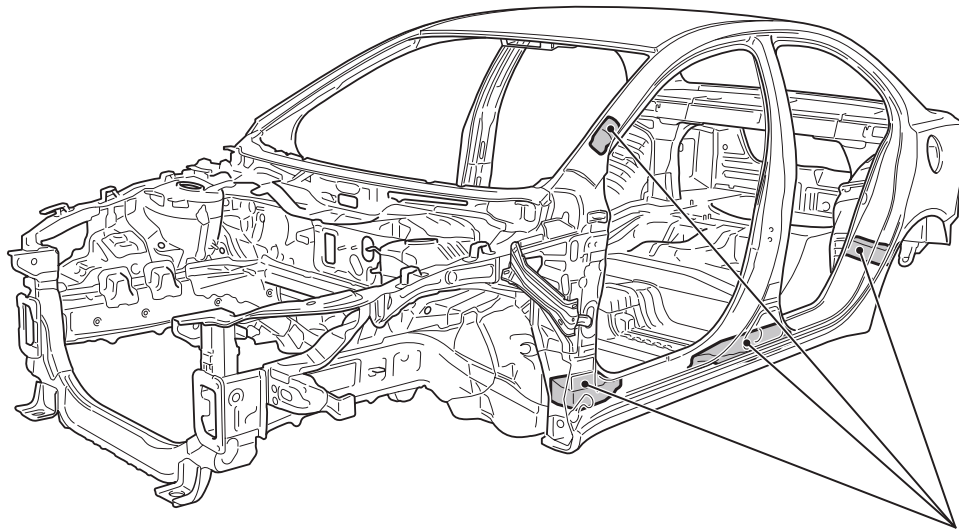
M4010006000099

The sound dampening foam material have been adopted to the upper and lower sections of the front pillar, center pillar lower section, side roof rail and wheel house arch inside to shield from external noise.

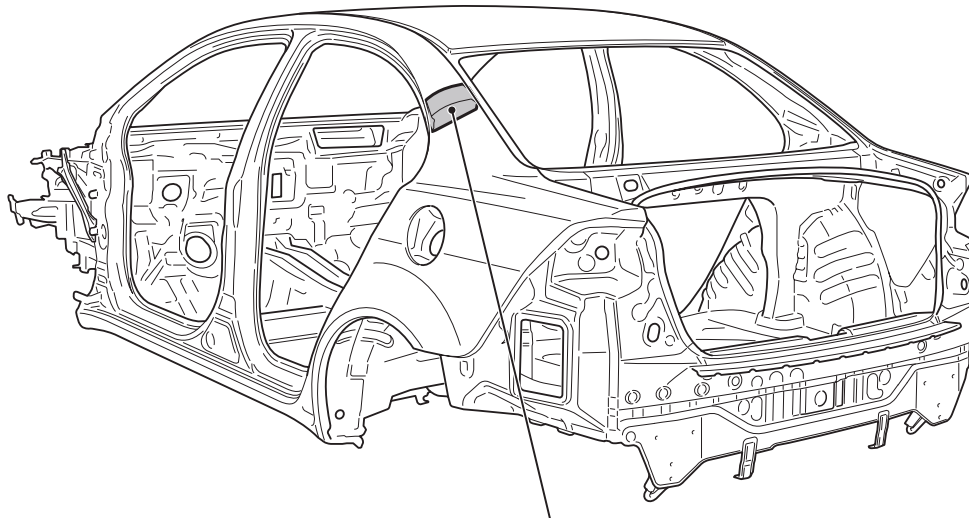
⚠ CAUTION

The sound dampening foam material may burn when heated. Always observe the following instructions:

- Never use a gas burner to burn the areas where sound dampening foam material are used.
- When cutting the parts which are provided with sound dampening foam material, ensure to use tools (air saw, etc.) that do not generate fire.
- If there are residual sound dampening foam material remaining on the cut section (body side), remove the sound dampening foam material from periphery of the welding area before welding work.



Sound dampening foam material



Sound dampening foam material

AB601682AB

NOTES