

GROUP 52A

INTERIOR

CONTENTS

GENERAL INFORMATION	52A-2	SEAT BELT	52A-8
INSTRUMENT PANEL AND FLOOR CONSOLE	52A-3	TRIMS	52A-10
SEAT	52A-5	INTERIOR TRIMS	52A-10
FRONT SEAT	52A-5	DOOR TRIM	52A-11
REAR SEAT	52A-7	HEADLINING	52A-12

GENERAL INFORMATION

M2520000101013

Functionality, interior comfort, and safety have been emphasized, giving interior design for elegance and relaxation space. Various measures have been taken to protect the environment and recycle resources.

FEATURES**Quality improvement**

1. Two-tone interior
2. Full interior trim

Usability improvement

1. Armrest (floor console, rear seat, front door trim, rear door trim)
2. Cup holder (floor console, rear seat armrest)
3. Bottle holder (front door trim)

Convenient storage

1. Glove box
2. Seatback pocket (driver's seat)
3. Card holder (glove box)
4. Tissue paper holder (floor console)
5. Floor console box
6. Door pocket (front door trim, rear door trim)

Safety improvement

1. Front and rear collision protection seat mechanism (front seat)

2. ISO-FIX lower anchor (rear seat outside)
3. Upper tether anchor (rear shelf)
4. ELR 3-point seat belt (driver's seat)
5. ELR/ALR 3-point seat belt (front passenger, rear)
6. Seat belt retractor with a driver's side pretensioner and force limiter
7. Seat belt retractor with a passenger's side pretensioner and force limiter
8. Headliner energy absorption rib <Vehicles without curtain air bag>

Consideration for the optimum driving position

1. Seat height adjustment (driver's seat)
2. Head restraint with height adjustment (front, rear)
3. Seat slide adjustment (front)

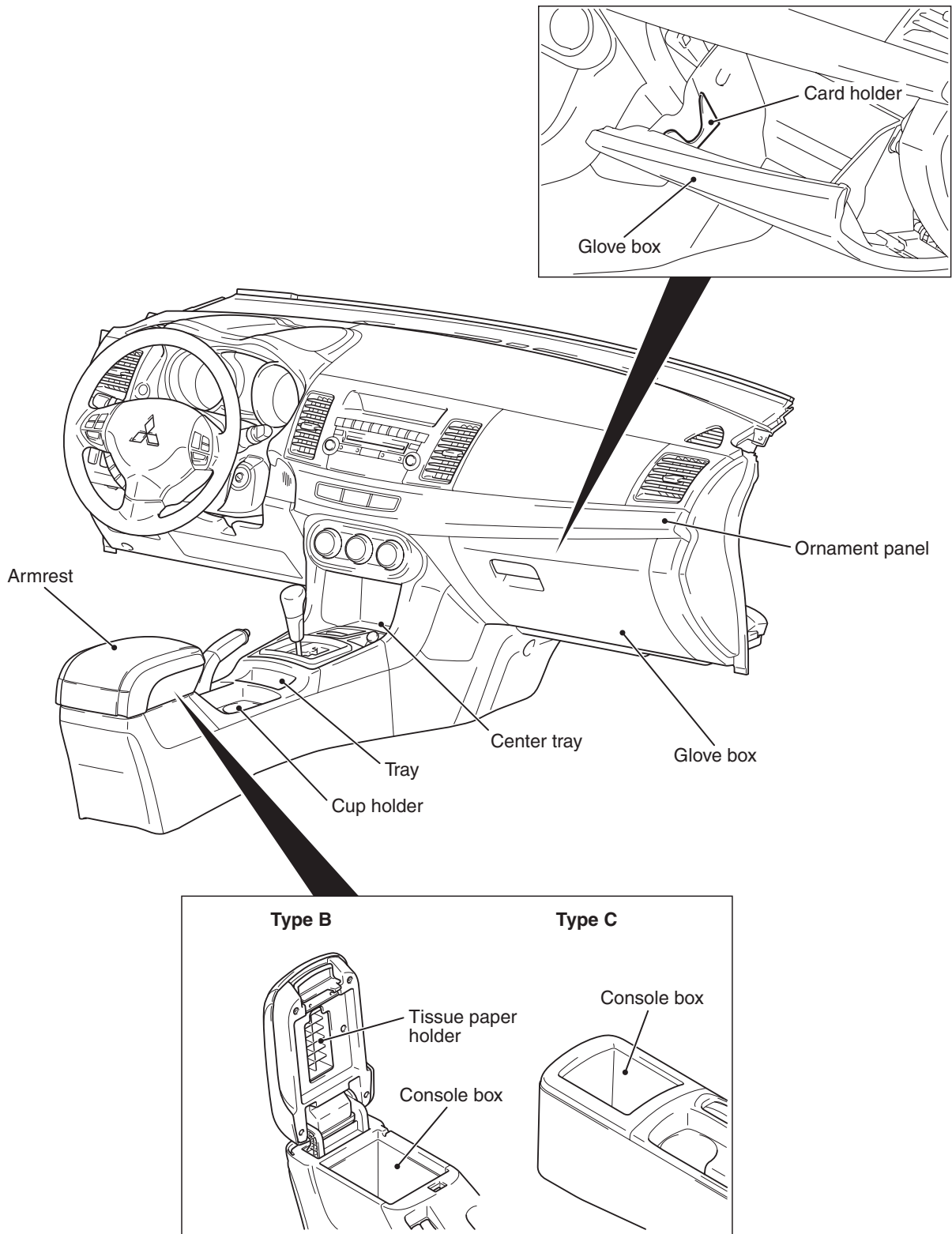
Measures for resource recycling

1. Aggressively use PP materials that are easy to recycle and easy to stamp material symbols on the plastic (resin) parts.
2. Reduction of chemical material (formaldehyde*, organic solvent)

*NOTE: *: Clear and colourless, toxic, irritating odour*

INSTRUMENT PANEL AND FLOOR CONSOLE

M2520001000793



AC609712

The instrument panel and the floor console have the following features.

- The instrument panel is two-toned.
- The division unit of each part has been enlarged, also the gap and level difference between the instrument panel has been minimized to achieve the delicate quality.

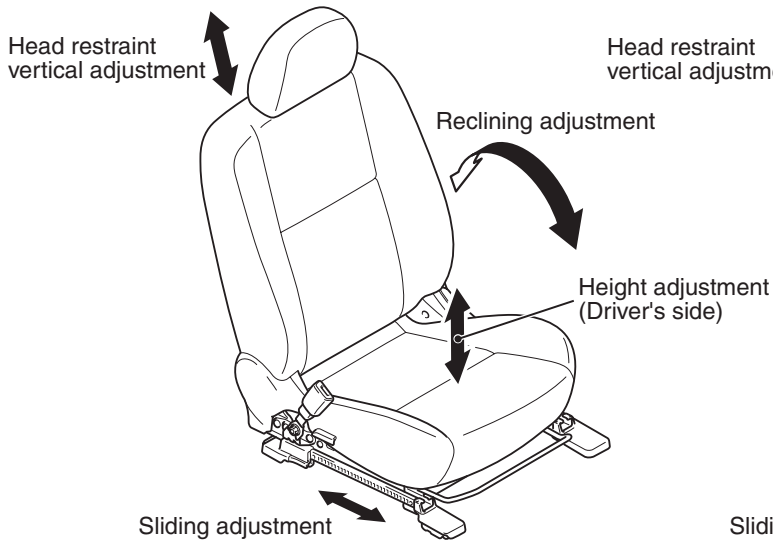
- The decorated panel creating uniformity from the instrument panel to the door trim has been adopted.
- The holder in which two cards can be stored has been installed in the glove box.
- The glove box with damper function has been installed. <Except DE>
- The center tray for storing small items has been installed in front of the selector or shift lever center panel.
- The cup holder which can hold two 20-oz bottles has been equipped. The cup holder can store two CDs in the upright position and pen-size long items horizontally.
- Under the arm rest of type B, a large box that can store 6 CDs has been equipped. (9 CDs for type C)
- A tray that can store cigarettes and lighters has been equipped. <Vehicles without console switch>
- The synthetic cloth is used for the arm rest lid to enhance luxury and soft feelings.

SEAT

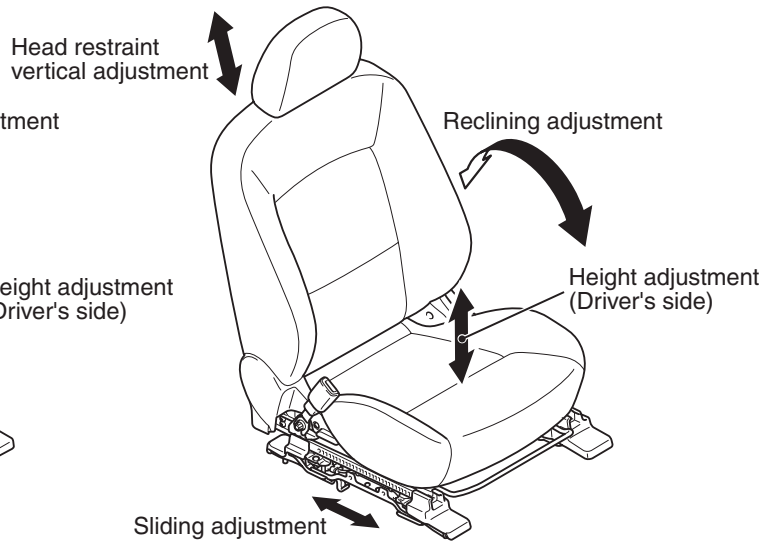
FRONT SEAT

M2520004000996

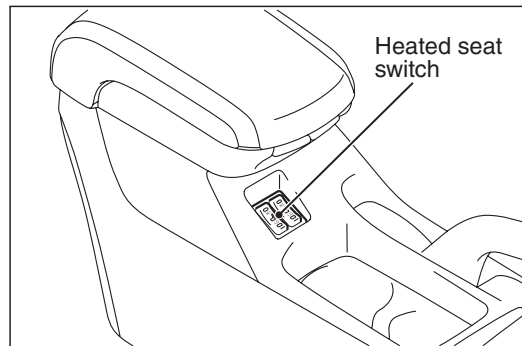
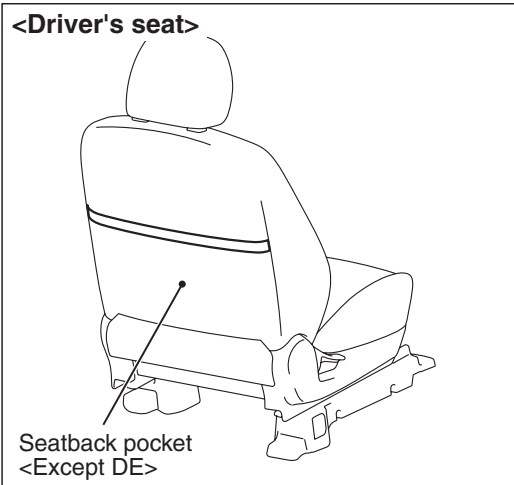
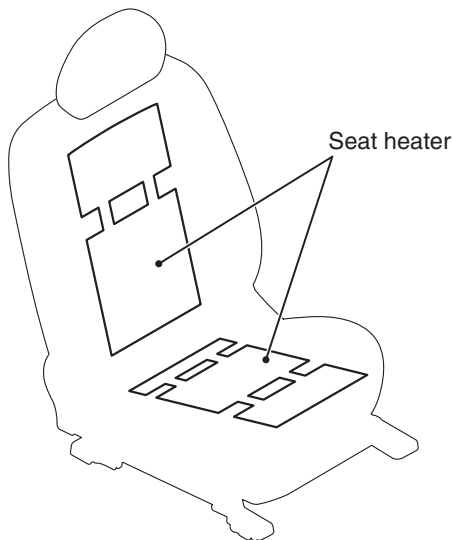
<Standard type>



<Sports type>



<Heated seat>



AC609378AB

The front seats offer the following advantages.

- The cross frame has been installed below the seat cushion to reduce a risk of injury by restraining the forward travel of the passenger. (Waist position travel reduction frame structure)

- The seat frame and head restraint have been installed to the proper positions to minimize the severity of whiplash injury at rear-end collision at a low speed. (Whiplash injury reduction seat structure)
- The overall height mechanism raises and lowers the seat cushion together with the seatback, thus the driver's posture is always kept at the best position, resulting in the improved riding comfort.
- The pump-type height lever has been adopted for easier operation with a light force by the vertical adjustment system. Also, the height adjustment amount has been increased for more optimum driving position.
- The variable hardness pad has been adopted for the sporty-look seat with increased bucket amount of side bolster in order to establish the sporty shape with support function <GTS>, and the standard shape which is basic and for actual use and comfortable driving.
- Heated seats are available for the driver's and passenger's seats. <ES, GTS: Option>
- The genuine leather for the seat has been upgraded to enhance the texture and luxury feeling. <GTS: Option>

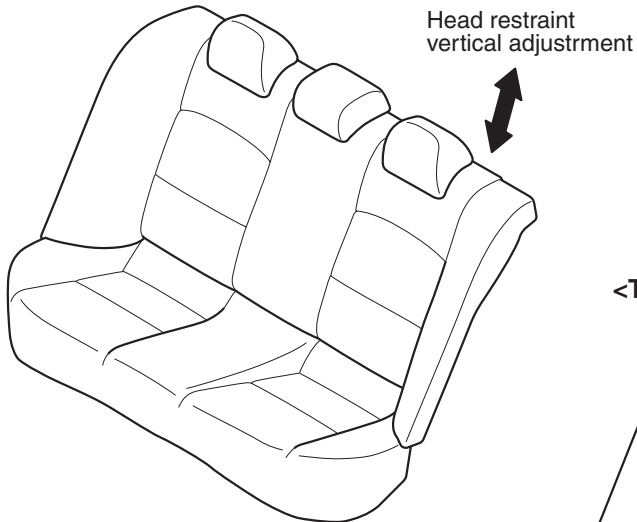
SPECIFICATIONS FOR HEATED SEAT

Item		Specifications
ENERGY CONSUMPTION W	HIGH	61 ± 6.1
	LOW	16 ± 1.6
THERMOSTAT °C	ON → OFF	40 ± 4
	OFF → ON	30 ± 5

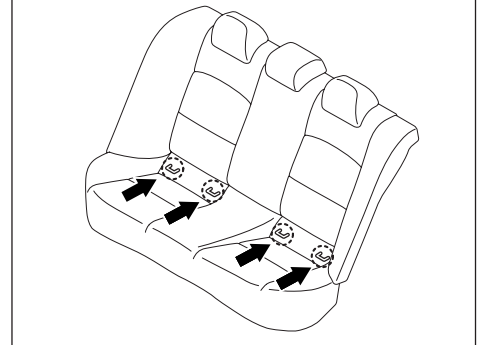
REAR SEAT

M2520007000605

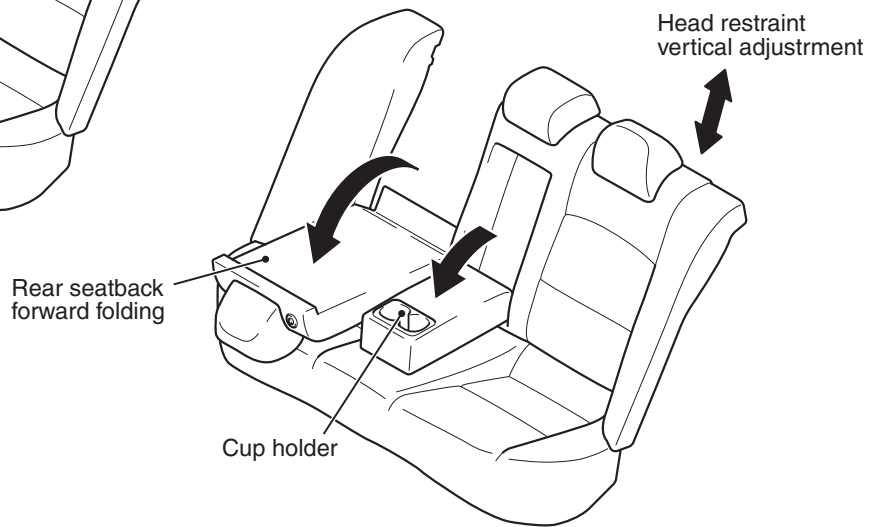
<Bench seat>



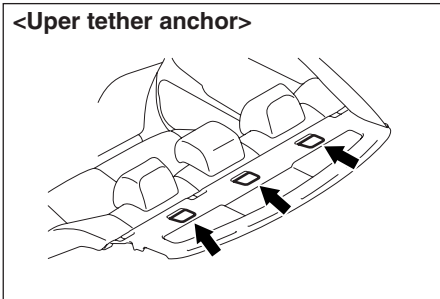
<Lower anchorage for child seat>



<Trunk through seat>



<Upper tether anchor>



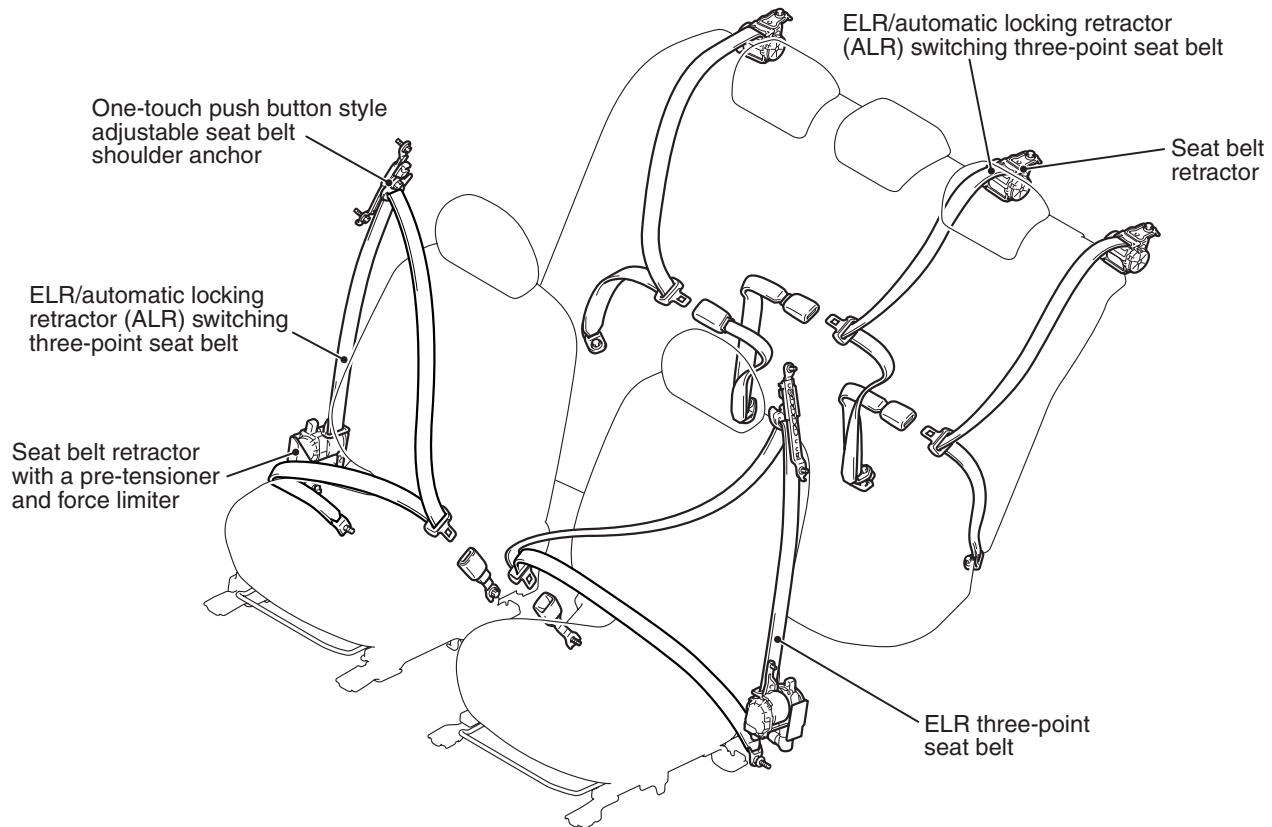
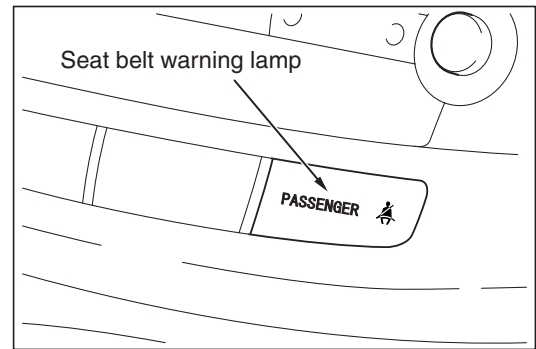
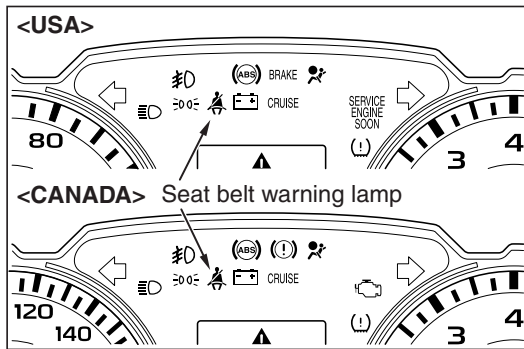
AC609174AB

A low-back bench seat is used for rear seat. The rear seat offer the following advantages:

- The center armrest has a cup holder.
- An upper tether anchor has been installed on the rear shelf trim, and an ISO-FIX lower anchor has been installed on the body side.

SEAT BELT

M2520010000683



AC608590AB

FRONT SEAT BELT

- An ELR three-point seat belt (driver's side) and three-point seat belt with ELR/ALR changeover mechanism (passenger's side) is used.
- One-touch push button style adjustable seat belt anchor and retractable buckle provide the most suitable belt fitting.

- The seat belt retractor with the force limiter for the driver's seat and the front passenger's seat increase safety.
- A seat belt warning light is installed to the driver's and passenger's seat.

REAR SEAT BELT

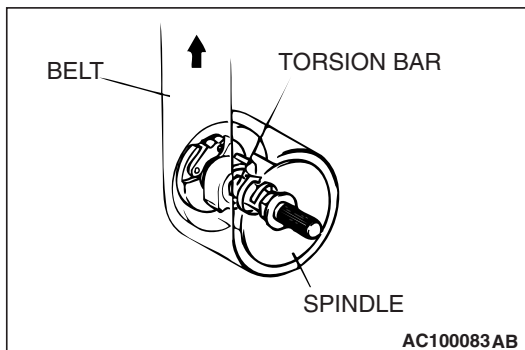
- 3-point seat belt with Automatic Locking Retractor (ALR)/ELR changeover mechanism (LH/RH/Center) is used for the rear seat.

SEAT BELT RETRACTOR WITH FORCE LIMITER

The driver's/front passenger's seat belt retractor has been equipped with a force limiter. The force limiter is a device which operates when a predetermined force is applied, and limits the force.

OPERATION

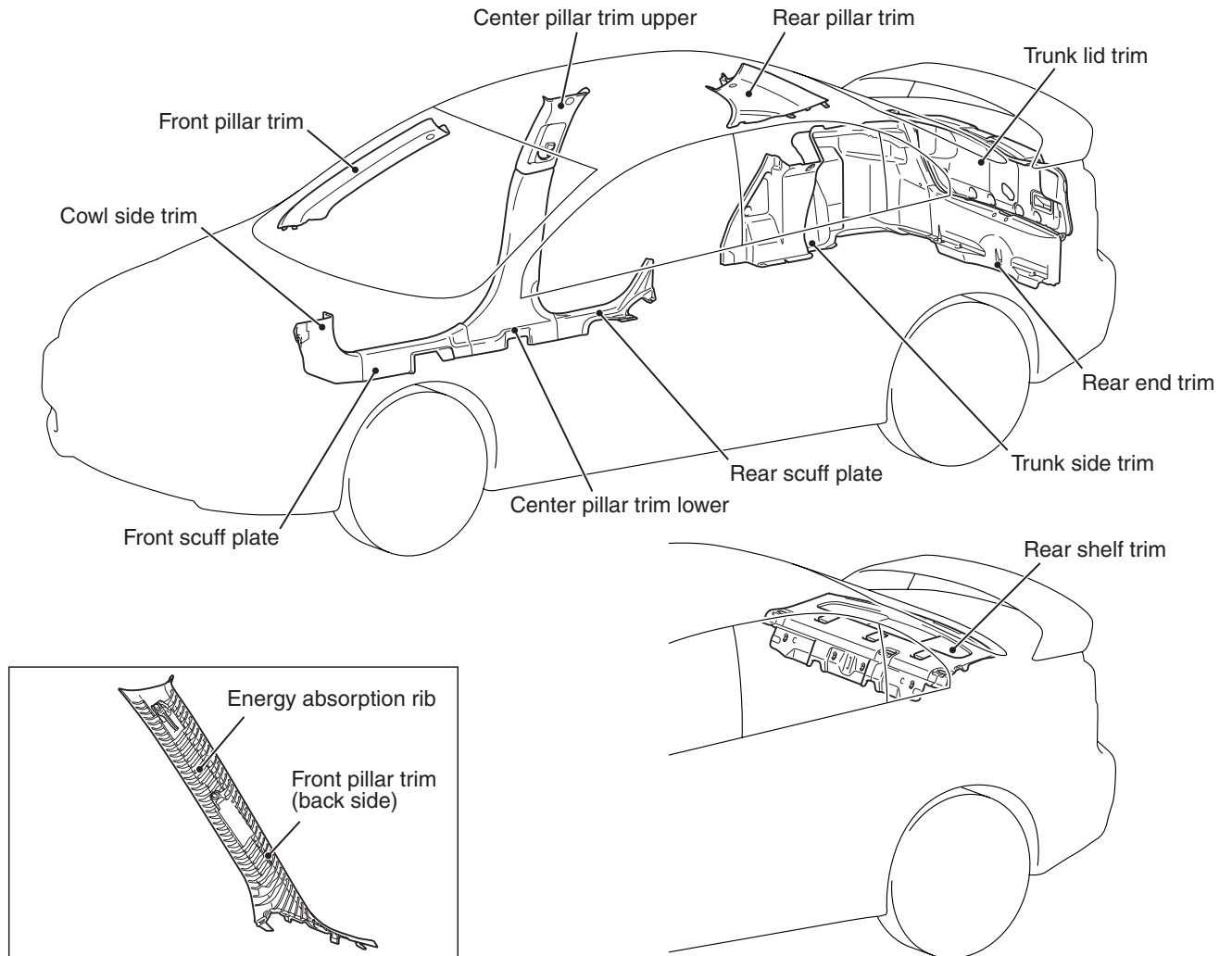
1. If a collision energy is transmitted to the seat belt, the ELR mechanism will operate to lock the seat belt.
2. If the energy increases to a predetermined value, the torsion bar will be distorted. As the spindle rotates together with the torsion bar, the seat belt webbing is pulled out, reducing the impact to the occupants.



TRIMS

INTERIOR TRIMS

M2520012000559



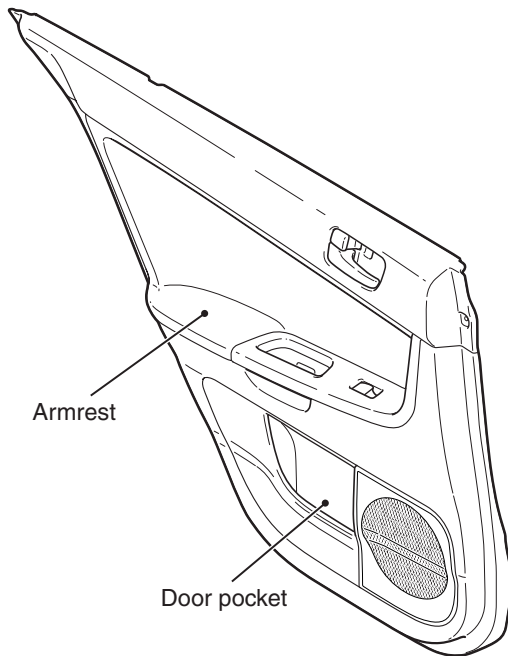
AC608126AB

- The interiors are fully covered by trims.
- The energy absorption rib molding located in the back side of the front pillar trim and the rear pillar trim protect head from side impacts and the resin materials for the trims are unbreakable materials.
- Use of nonflammable materials for the trims has increased safety as outstanding interiors. Also, material codes are indicated to deal with recycling easily.

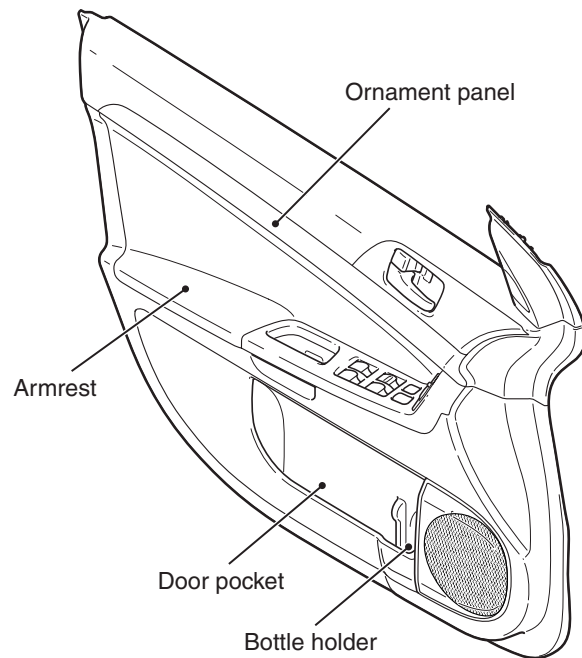
DOOR TRIM

M2520012300594

<Rear door trim>



<Front door trim>

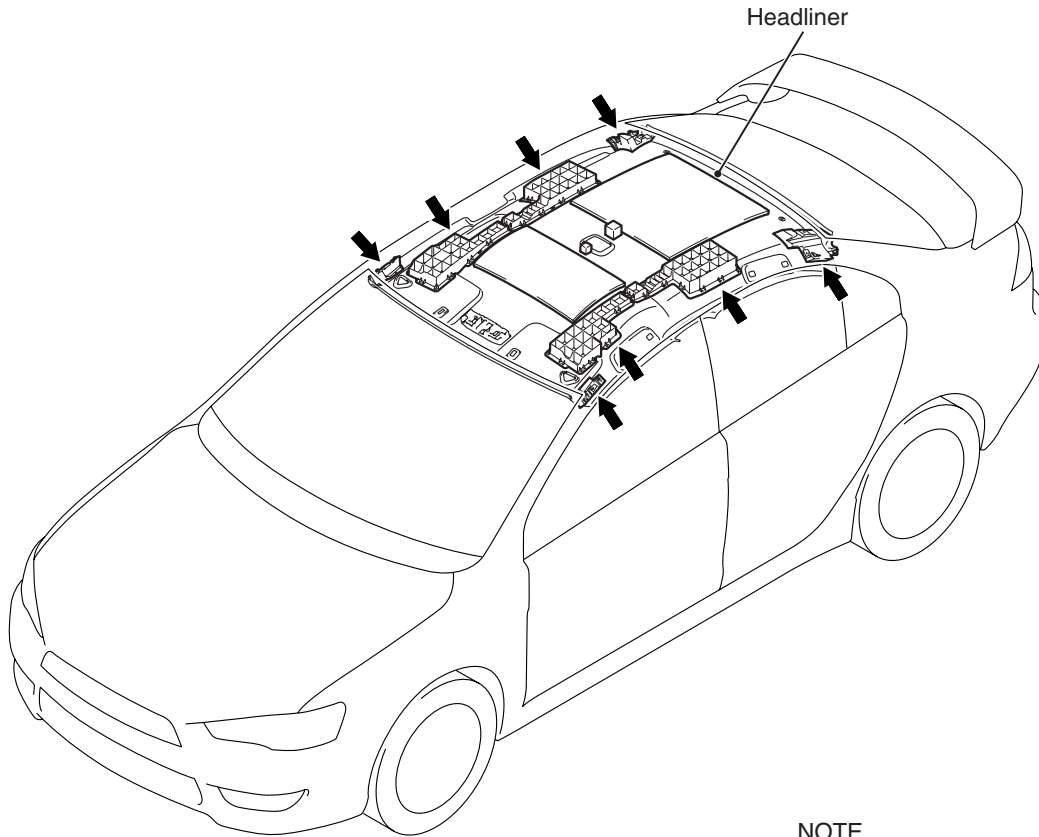


AC608432AB

- The decorated panel has been adopted for the front door trim.
- The bottle holder for bottles with shapes that are difficult to keep upright has been adopted for the front door pocket.
- The front door pocket with a large capacity has been adopted for items such as A4-size map. Also, the rear door pocket has been added.
- The shock absorbing arm rest has been adopted which reduces the mid section injuries to passengers by collapsing upon side impact.
- The arm rest which is formed with cloth has been adopted to create a continuous flow with the ornament section.

HEADLINING

M2520014000306

**NOTE**

◀ : Energy absorption box positions

AC608128AC

Interior design with safe material has been adopted, achieving more safe and comfortable interior.

- Energy absorption pad and rib have been adopted to the inside of headliner. This reduces head injuries upon the secondary impact against the cabin during a collision, and improves safety.