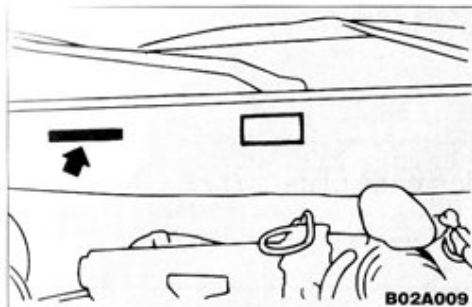


Specifications

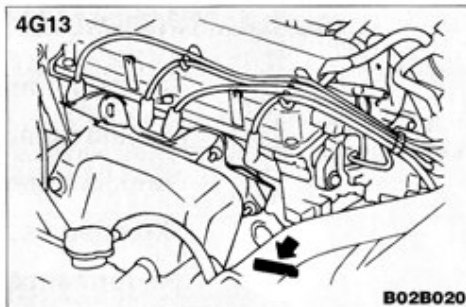
Chassis number	10-2
Engine number	10-2
Vehicle information code plate	10-3
Dimensions.....	10-4
Performance	10-5
Weights	10-5
Engine	10-6
Transmission.....	10-7
Electrical system.....	10-7
Tyres and wheels	10-8
Other specifications.....	10-8
Capacities	10-9
Fuel consumption	10-10



Chassis number

EB02A-E

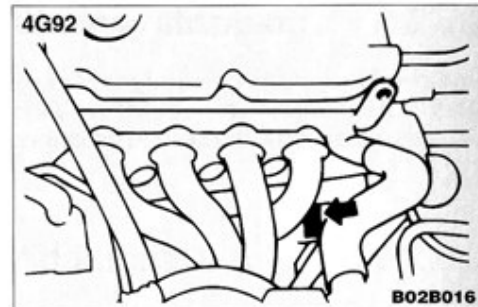
The chassis number is stamped on the bulkhead as shown in the illustration.

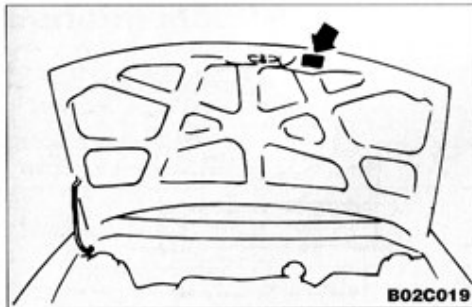


Engine number

EB02B-A

The engine number is stamped on the engine cylinder block as shown in the illustrations.





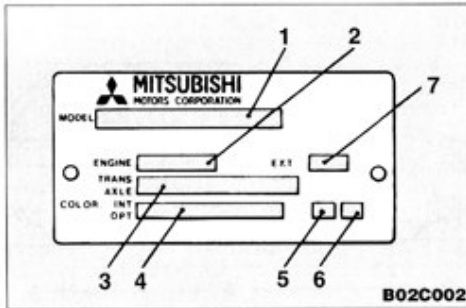
Vehicle information code plate

EB02C-Aa

The vehicle information code plate is fitted as illustrated.

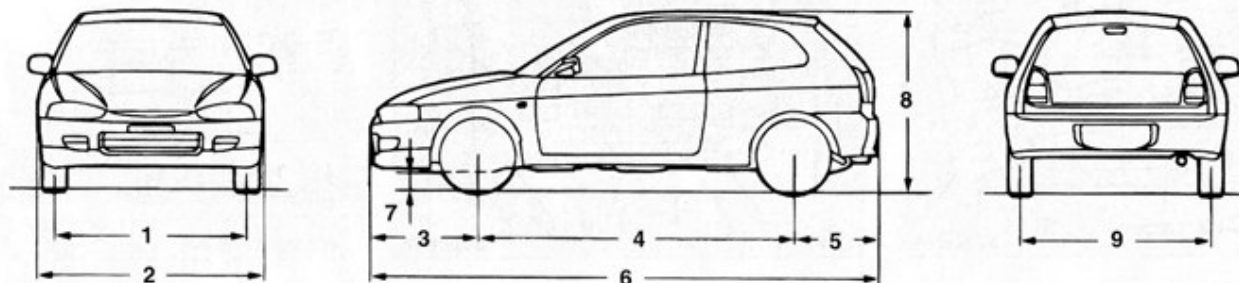
The plate shows model code, engine model, transmission model and body color code, etc.

Please use this number when ordering replacement parts.



- 1 - Model code
- 2 - Engine model code
- 3 - Transmission model code
- 4 - Body color code
- 5 - Interior code
- 6 - Option code
- 7 - Exterior code

SPECIFICATIONS



P01A040

Dimensions

EP01ASDb

1	Front track	1450 mm (4'9,1")
2	Overall width	1680 mm (5'6,1")
3	Front overhang	825 mm (2'8,5")
4	Wheel base	2415 mm (7'9,1")
5	Rear overhang	660 mm (2'2,0")
6	Overall length	3900 mm (12'9,5")
7	Ground clearance (unladen)	150 mm (0'5,9")
8	Overall height (unladen)	1365 mm (4'5,7"), 1385 mm (4'6,5")*
9	Rear track	1460 mm (4'9,5")

* : Vehicles with roof spoiler

Performance

Item		1300		1600	
		M/T	A/T	M/T	A/T
Maximum speed		170 km/h (106 mph)	160 km/h (100 mph)	180 km/h (112 mph)	175 km/h (109 mph)
Maximum turning radius	Body	5.3 m (17'5")			
	Wheel	5.0 m (16'5")			

Weights

kg

Item		1300			1600		
		GL	GLX		GL	GLX	
			M/T	A/T		M/T	A/T
Kerb weight	Without optional parts	945	950	970	975	975	995
	With full optional parts	1015	1020	1040	1045	1045	1065
Maximum gross vehicle weight		1445, 1495 *	1445, 1495 *	1465, 1515 *	1470, 1520 *	1470, 1520 *	1480, 1530 *
Maximum axle weight	Front	810					
	Rear	705, 770 *					
Maximum towable weight	With brake	1000					
	Without brake	400					
Maximum trailer nose weight		50					
Maximum roof rack load		80					
Seating capacity		5 persons					

* : In case of trailer towing

NOTE: Trailer specifications indicate the manufacturer's recommendation.

Engine

Item		1300	1600
Engine type		Four-cylinder, in line, water-cooled, four-cycle, single overhead camshaft	
Engine model		4G13	4G92
Total displacement		1299 cc	1597 cc
Bore		71.0 mm	81.0 mm
Stroke		82.0 mm	77.5 mm
Compression ratio		9.5 : 1	10.0 : 1
Valve clearance	Intake	0.20 mm (hot)	0.20 mm (hot)
	Exhaust	0.25 mm (hot)	0.30 mm (hot)
Firing order		1-3-4-2	
Maximum output (EEC)		55 kW @ 6,000 r/min	66 kW @ 5,500 r/min
Maximum torque (EEC)		108 Nm @ 3,000 r/min	137 Nm @ 4,000 r/min

Transmission

Item		1300		1600	
		M/T	A/T	M/T	A/T
Gear ratio	1st	3.583	2.842	3.583	2.842
	2nd	1.947	1.529	1.947	1.529
	3rd	1.343	1.000	1.343	1.000
	4th	0.976	0.712	0.976	0.712
	5th	0.804	—	0.804	—
	Reverse	3.416	2.480	3.416	2.480

Electrical system

Item		1300	1600
Voltage		12V	
Battery type		55D23L	
Alternator capacity		80 A or 90 A	80 A or 90 A
Spark plug type	NGK	BPR5ES-11	BKR6E-11
	NIPPONDENSO	W16EPR11	K20PR-U11
	CHAMPION	RN11YC4	RC9YC4

Tyres and wheels

Item		1300 1600 GL	1600 GLX (A/T)	1600 GLX (M/T)
Tyre	Size	175/70R13 82H 175/70R13 82T	175/70R13 82H 175/70R13 82T 185/65R14 86H*	175/70R13 82H 185/65R14 86H*
Wheel	Size	13 x 5.00B (St) 13 x 5J (Al)*	13 x 5.00B (St) 13 x 5J (Al)* 14 x 5.5JJ (St)* 14 x 5.5JJ (Al)*	
	Offset	46 mm		

* : Option

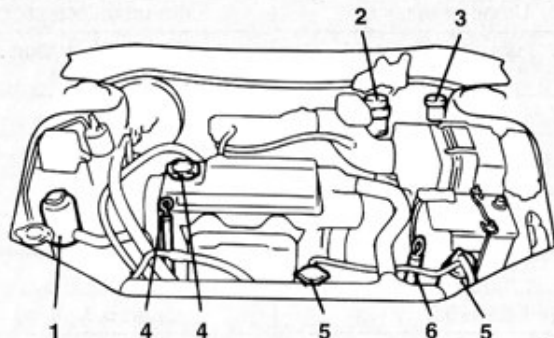
Other specifications

Fuel system	Fuel control	Electronic controlled injection
	Fuel pump	Electric motor type
Clutch		Dry single disc clutch with diaphragm spring, hydraulic action
Steering system		Rack and pinion type, power assisted
Suspension	Front	Independent type, McPherson strut, coil spring
	Rear	Independent type, multi-link, coil spring
Service brakes	Type	Hydraulic, diagonally connected double circuit system with power assistance, anti-lock brake*
	Front	Disk brakes
	Rear	Drum brakes
Parking brakes		Parking brake acts mechanically on rear wheels

* : Option

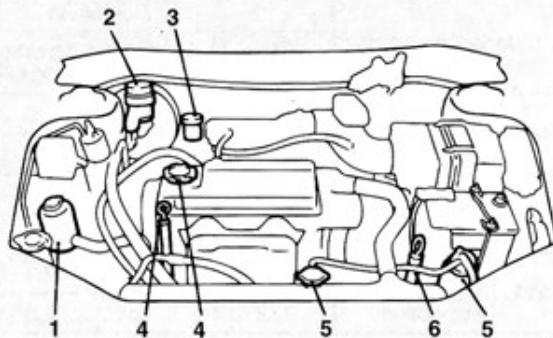
Capacities

LHD



Q02A124

RHD



Q02A123

No.	Item		Quantity	Recommended lubricants
1	Power steering fluid		As required	ATF DEXRON II
2	Brake fluid		As required	Brake fluid DOT 3 or DOT 4
3	Clutch fluid		As required	Brake fluid DOT 3 or DOT 4
4	Engine oil	Oil pan	1300	Refer to page 9-2
			1600	
		Oil filter		
5	Engine coolant		1300	High-quality ethylene glycol includes 0.65 litre in the reserve tank
			1600	
6	Automatic transmission fluid		7.8 litres	DIA QUEEN ATF SP II or equivalent
7	Manual transmission fluid		1300	Hypoid gear oil API GL-4, SAE 75W-90 or 75W-85W
			1600	
8	Washer fluid		4.5 litres	—
9	Refrigerant (air conditioning)		560 - 600 g	HFC-134a

NOTE

Points requiring routine inspection or replenishment such as the engine oil, coolant, automatic transmission fluid, brake fluid are marked white for easy identification.

Fuel consumption

EQ01ASD

Model			Combined		Urban conditions	Extra-urban conditions
			CO ₂ (g/km)	Fuel consumption (l/100 km)	Fuel consumption (l/100 km)	Fuel consumption (l/100 km)
1300	M/T	Standard	159	6.8	9.1	5.4
		Full-option	161	6.9	9.2	5.5
	A/T	Standard	185	7.9	10.4	6.4
		Full-option	188	8.0	10.6	6.5
1600	M/T	Standard	168	7.1	9.6	5.7
		Full-option	172	7.3	9.9	5.8
	A/T		194	8.2	10.8	6.8

NOTE

The results given do not express or imply any guarantee of the fuel consumption of the particular vehicle.

The vehicle itself has not been tested and there are inevitably differences between individual vehicles of the same model. In addition, this vehicle may incorporate particular modifications. Furthermore, the driver's style and road and traffic conditions, as well as the extent to which the vehicle has been driven and the standard of maintenance, will all affect its fuel consumption.