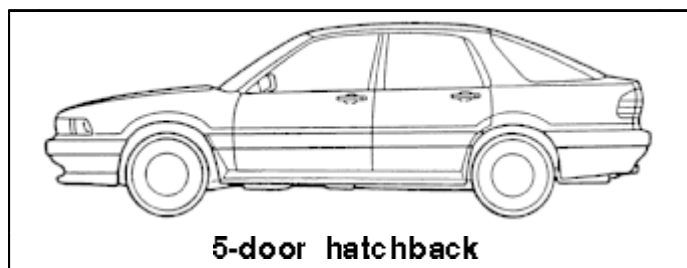
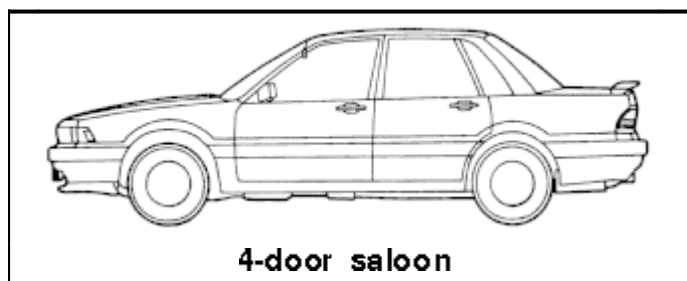


Mitsubishi Galant diesel 1988-1992

Identification

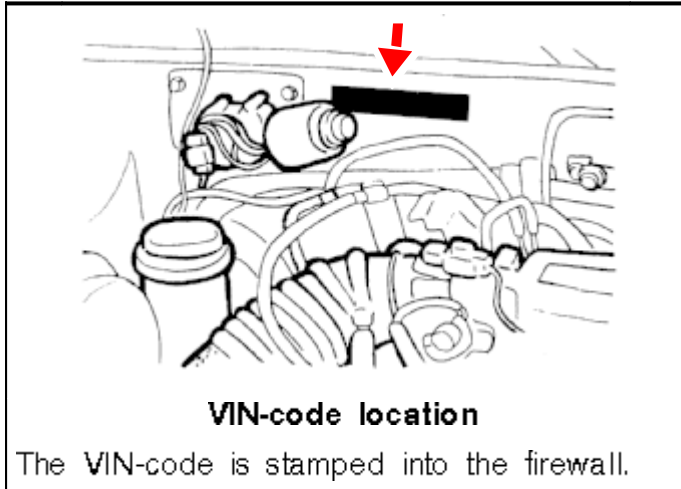
version	engine code	cm ³	kW / hp	transmission
Galant 1.8 GL TD, GLS TD, GLX TD	4D65	1795	55 / 75	5-speed gearbox: KM210/F5M31 automatic transmission: KM176/F4A21



Identification plate

The identification plate is rivetted to the under side of the bonnet.

1. model data
2. engine code
3. transmission code
4. equipment level code and paint code

VIN-code

▲ J M B S N E33 A L Z 5 000001 ▲

1 2 3 4 5

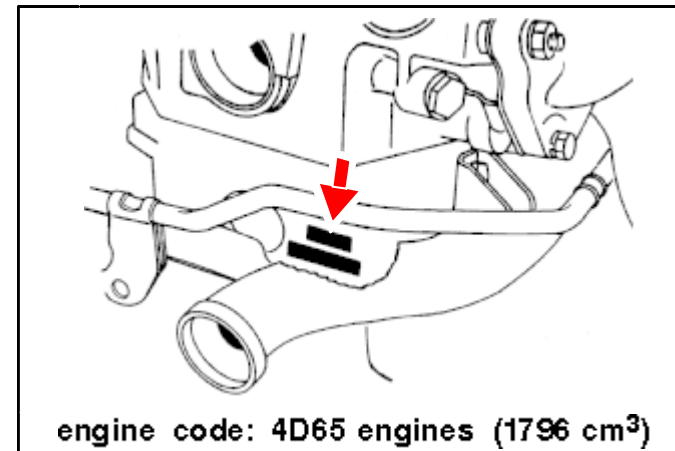
1. body type: L = 5-door hatchback; S = 4-door saloon
2. transmission type: N = 5-speed gearbox; R = automatic transmission (4)
3. vehicle code: E31 = Galant with 1598 cm³; E32 = Galant with 1755 cm³; E33 = Galant with 1997 cm³; E34 = Galant with 1796 (diesel) cm³; E38 = Galant with 1997 cm³ (4WD); E39 = Galant with 1997 cm³ (4WD, 4WS)
4. model year: K = 1989; L = 1990; M = 1991; N = 1992
5. chassis number

Chassis number

The chassis number is a part of the VIN-code. The VIN-code is stamped into the firewall.

Paint code

The paint code is shown on the identification plate.

Engine

The engine fitted is a 4-cylinder in line engine with overhead camshaft driven by a toothed belt. The injection pump is also driven by this belt.

Gearbox

The gearbox code is included in the VIN-code. The Galant models with diesel engines have a 5-speed gearbox or automatic transmission.

Differential

The differential forms one unit with the gearbox.