

GROUP 32

POWER PLANT MOUNT

CONTENTS

GENERAL DESCRIPTION	32-2	ENGINE ROLL STOPPER AND CENTERMEMBER	32-9
SPECIAL TOOLS	32-4	REMOVAL AND INSTALLATION	32-9
ENGINE MOUNTING	32-5	CROSSMEMBER	32-11
REMOVAL AND INSTALLATION	32-5	REMOVAL AND INSTALLATION	32-11
INSPECTION	32-6	CROSSMEMBER BUSHING REPLACEMENT	32-12
TRANSAXLE(TRANSMISSION) MOUNTING	32-7	SPECIFICATIONS	32-13
REMOVAL AND INSTALLATION	32-7	FASTENER TIGHTENING SPECIFICATION	32-13
		SERVICE SPECIFICATION	32-13

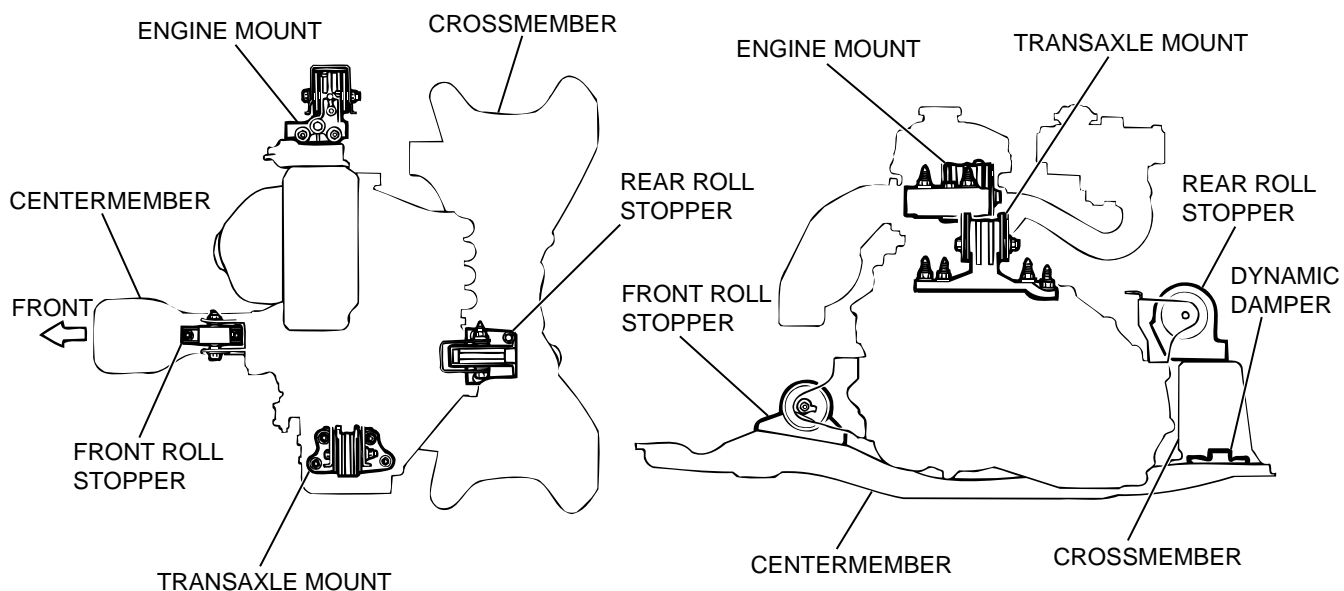
GENERAL DESCRIPTION

M1321000100083

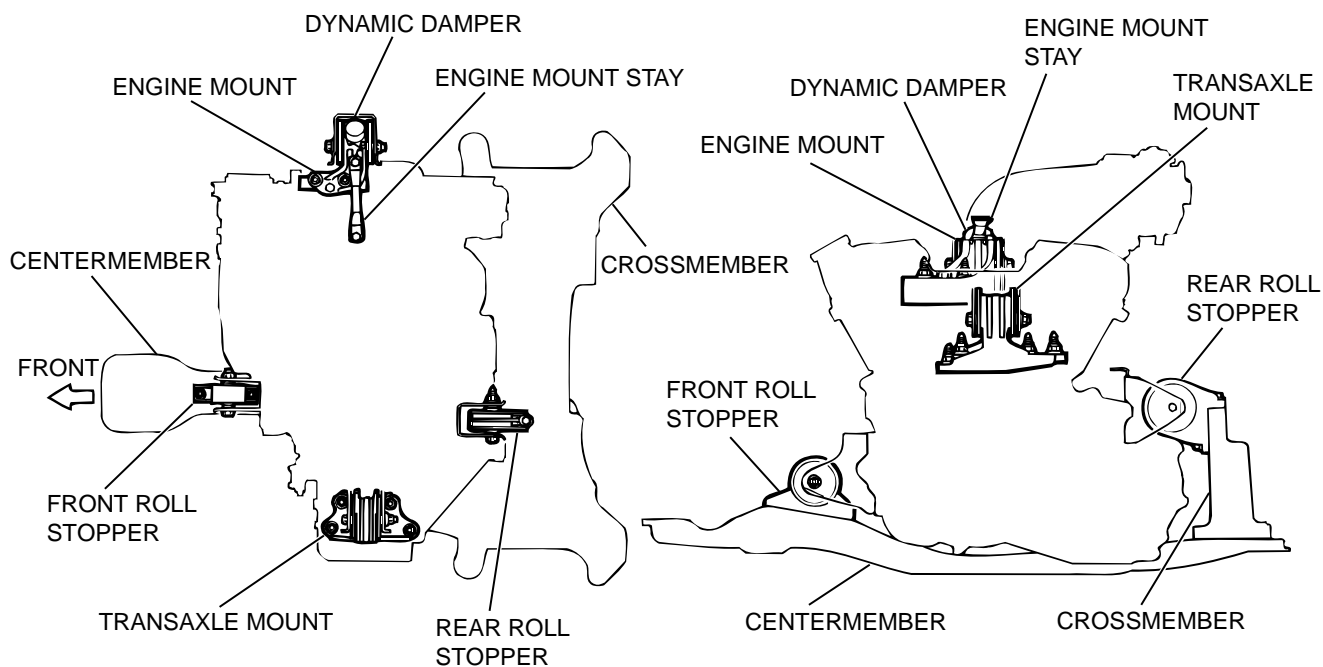
The engine-transaxle mount is of an inertial axis supporting type whose excellent features have already been proven in many Mitsubishi vehicles. The inertial axis supporting type mount supports the front upper part of the engine at the front and the rear upper part of the transaxle at the rear. This arrangement effectively suppresses the engine vibration.

ENGINE MOUNT CONSTRUCTION DIAGRAM

<2.4L ENGINE>



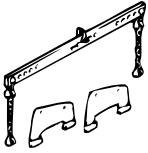
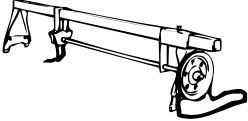
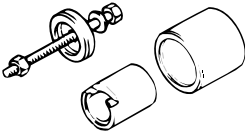
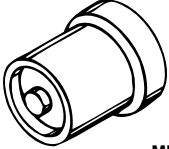
<3.0L ENGINE>



AC005075 AB

SPECIAL TOOLS

M1321000600066

TOOL	TOOL NUMBER AND NAME	SUPERSESION	APPLICATION
 <p>MB991453</p>	MB991453 Engine hanger	Tool not available	To support the engine assembly during removal and installation of the transaxle mount
 <p>MZ203827</p>	MZ203827 Engine lifter	General service tool	
 <p>MB991045</p>	MB991045 Bushing remover and installer	Tool not available	Driving out and press-fitting of crossmember bushings A and B
 <p>MB990828</p>	MB990828 Bushing remover and installer	Tool not available	Driving out and press-fitting of crossmember bushing C

ENGINE MOUNTING

REMOVAL AND INSTALLATION

M1321001100086

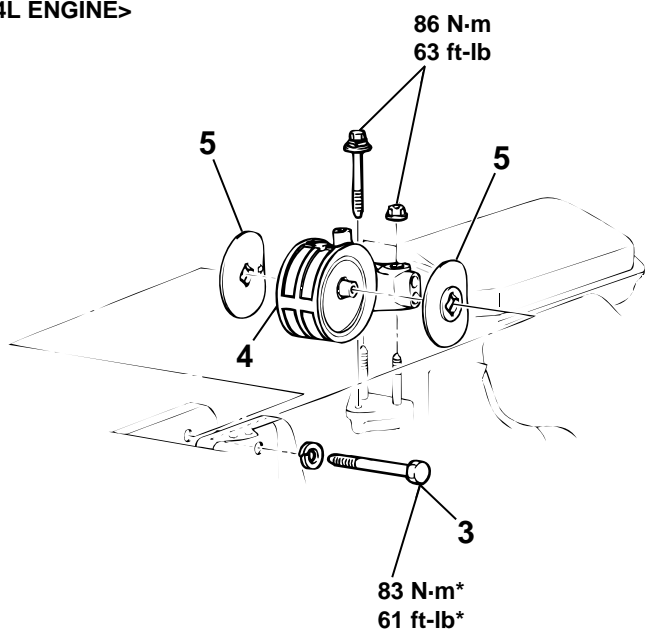
CAUTION

Mounting locations marked by * should be provisionally tightened, and then fully tightened after placing the vehicle horizontally and loading the full weight of the engine on the vehicle body.

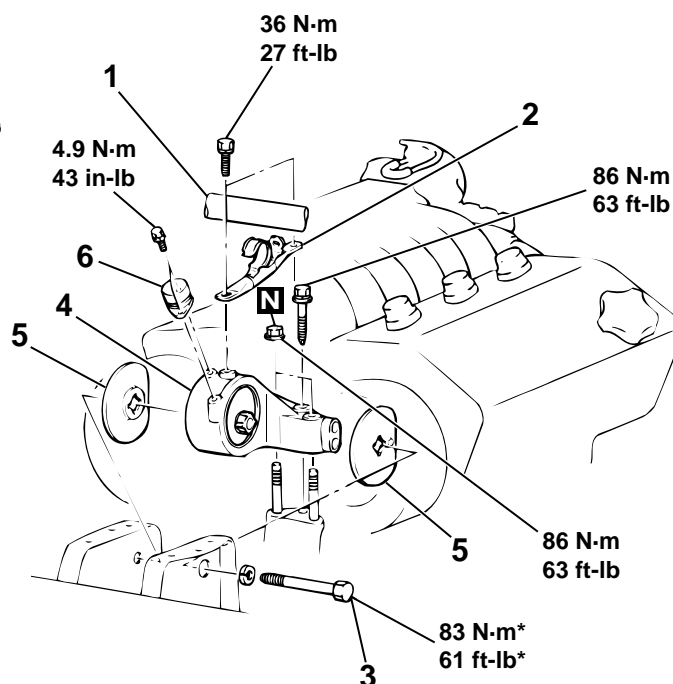
Pre-removal and Post-installation Operation

- Jack Up the Engine and Transmission Assembly Until There is no Weight on the Engine Mount Bracket Insulator.
- Reserve Tank Removal and Installation (Refer to GROUP 14, Radiator P.14-15.)

.4L ENGINE>



<3.0L ENGINE>



AC000299AC

REMOVAL STEPS

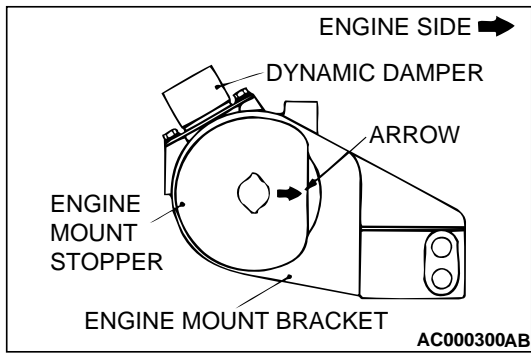
1. SUCTION HOSE <3.0L ENGINE>
2. ENGINE MOUNT STAY <3.0L ENGINE>
3. ENGINE MOUNT INSULATOR MOUNTING BOLT

REMOVAL STEPS (Continued)

- >>A<<
4. ENGINE MOUNT BRACKET
 5. ENGINE MOUNT STOPPER
 6. DYNAMIC DAMPER <3.0L ENGINE>

INSTALLATION SERVICE POINT**>>A<< ENGINE MOUNT STOPPER INSTALLATION**

Clamp the engine mount stopper so that the arrow points in the direction as shown in the diagram.

**INSPECTION**

M1321001200061

- Check the insulators for cracks, separation or deformation.
- Check the front insulator stoppers for deformation.

TRANSAXLE(TRANSMISSION) MOUNTING

REMOVAL AND INSTALLATION

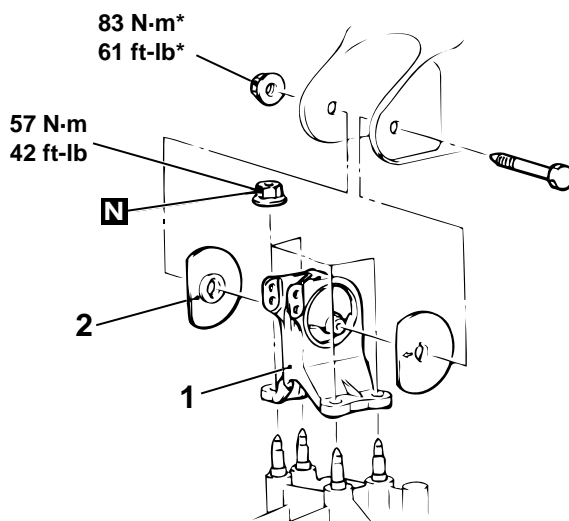
M1321001400087

CAUTION

Mounting locations marked by * should be provisionally tightened, and then fully tightened after placing the vehicle horizontally and loading the full weight of the engine on the vehicle body.

Pre-removal and Post-installation Operation

- Air Cleaner Assembly Removal and Installation (Refer to GROUP 15, Air Cleaner P.15-4.)
- Battery and Battery Tray Removal and Installation (Refer to GROUP 54A, Battery P.54A-8.)
- Centermember Removal and Installation (Refer to P.32-9.)
- Transaxle and Rear Roll Stopper Connecting Bolt Removal and Installation (Refer to P.32-9.)
- Rear Roll Stopper Bracket Removal and Installation <2.4L Engine> (Refer to GROUP 23A, Transaxle P.23A-290.)



AC000301AC

<<A>>

REMOVAL STEPS

1. TRANSAXLE MOUNT BRACKET
2. TRANSAXLE MOUNT STOPPER

>>A<<

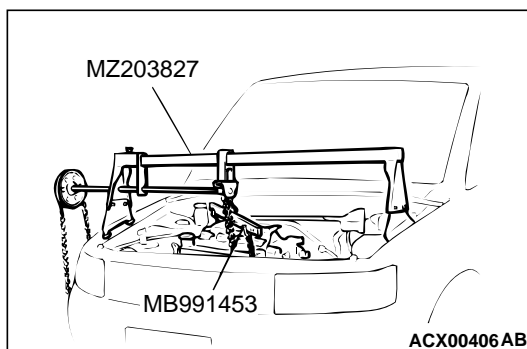
Required Special Tools:

- MB991453: Engine Hanger
- MZ203827: Engine Lifter

REMOVAL SERVICE POINT

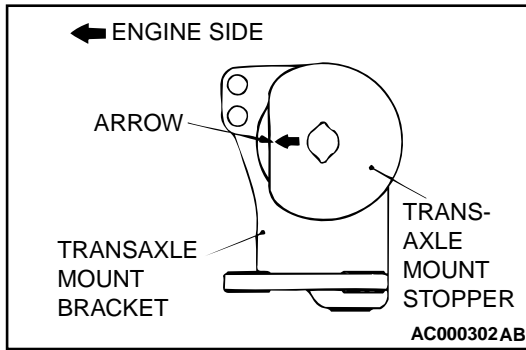
<<A>> TRANSAXLE MOUNT BRACKET REMOVAL

1. Install special tools MB991453 and MZ203827 to the vehicle body to support the engine and transaxle assembly.
2. Remove the centermember and rear roll stopper bracket.
3. Remove the bolt and nut of the transaxle mount bracket.
4. After lowering the engine and transaxle assembly, remove the transaxle mount bracket.



INSTALLATION SERVICE POINT**>>A<< TRANSAXLE MOUNT STOPPER INSTALLATION**

Clamp the transaxle mount stopper so that the arrow points in the direction as shown in the diagram.



ENGINE ROLL STOPPER AND CENTERMEMBER

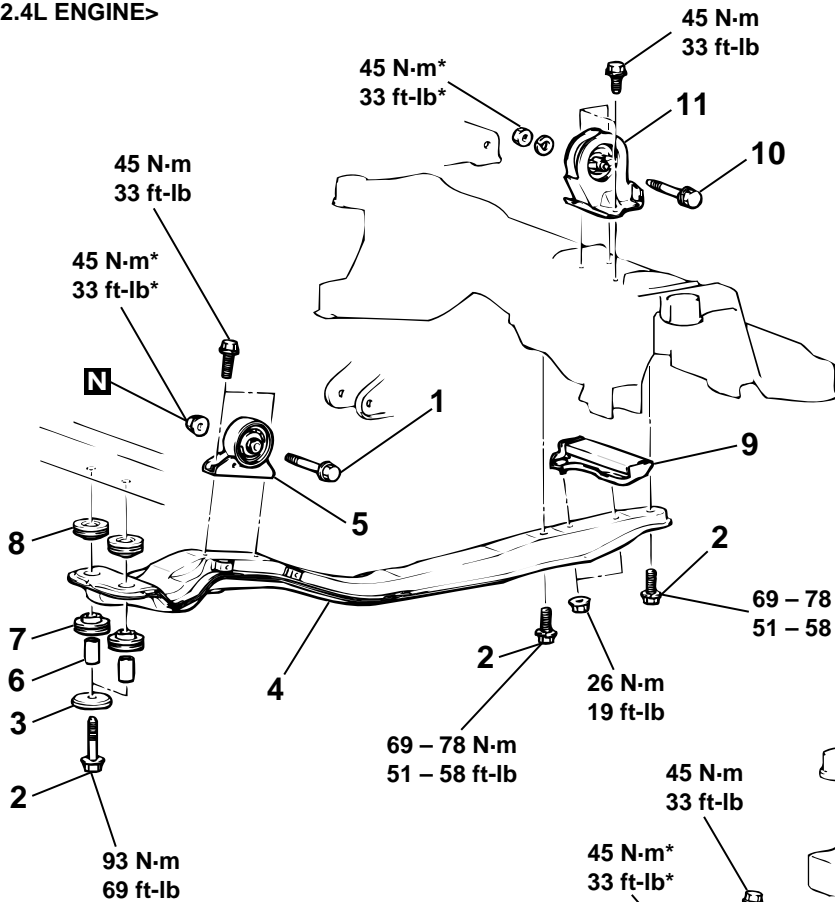
REMOVAL AND INSTALLATION

M1321002300049

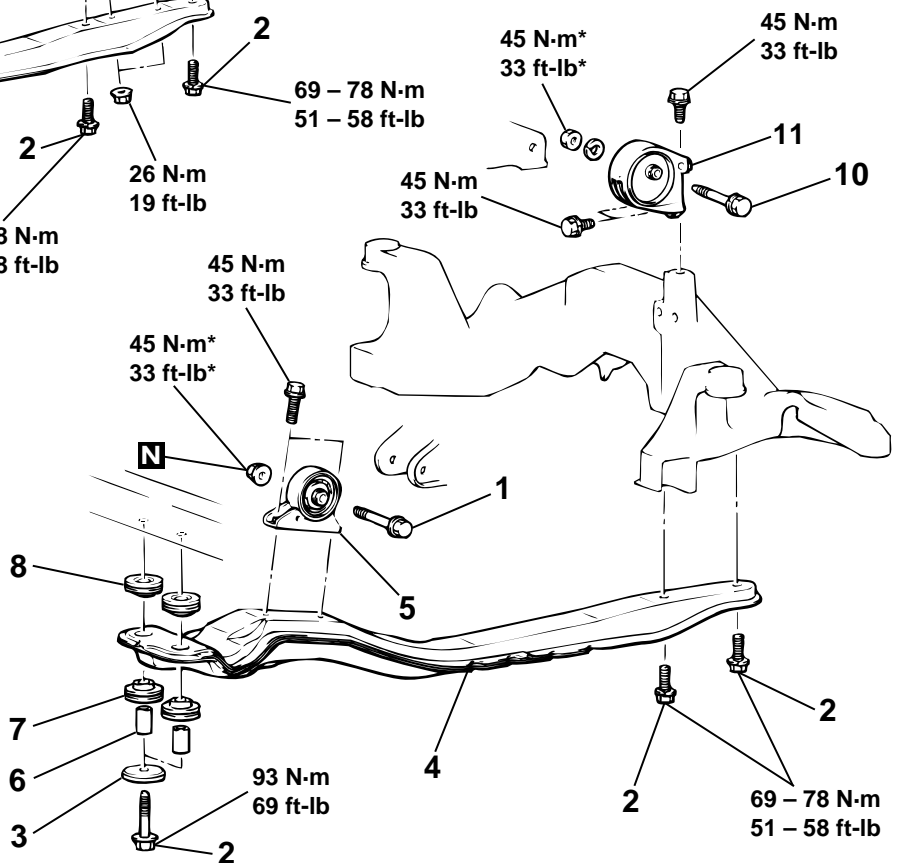
CAUTION

Mounting locations marked by * should be provisionally tightened, and then fully tightened after placing the vehicle horizontally and loading the full weight of the engine on the vehicle body.

2.4L ENGINE>



<3.0L ENGINE>



AC005074AB

TSB Revision

**FRONT ROLL STOPPER,
CENTERMEMBER REMOVAL
STEPS**

1. TRANSAXLE AND FRONT ROLL STOPPER CONNECTING BOLT
2. CENTERMEMBER MOUNTING BOLTS
3. STOPPER
4. CENTERMEMBER
- >>A<< 5. FRONT ROLL STOPPER
6. COLLAR
7. BUSHING (LOWER)

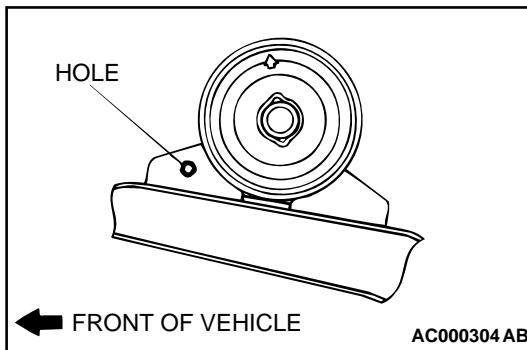
**FRONT ROLL STOPPER,
CENTERMEMBER REMOVAL
STEPS (Continued)**

8. BUSHING (UPPER)
9. DYNAMIC DAMPER <2.4L ENGINE>
- REAR ROLL STOPPER
REMOVAL STEPS**
10. TRANSAXLE AND REAR ROLL STOPPER CONNECTING BOLT
11. REAR ROLL STOPPER

INSTALLATION SERVICE POINT

>>A<< FRONT ROLL STOPPER INSTALLATION

Install so that the hole in the front roll stopper is facing towards the front of the vehicle.



CROSSMEMBER

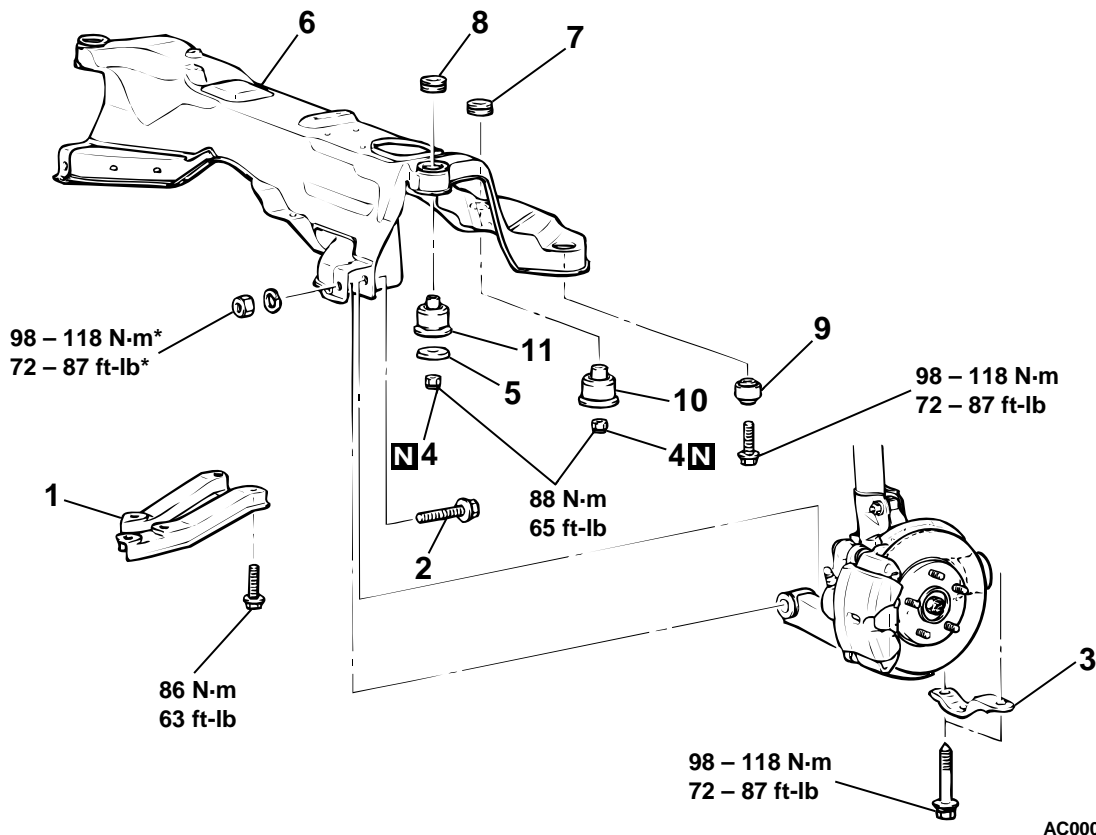
REMOVAL AND INSTALLATION

M1321003200078

CAUTION

- *: Indicates parts which should be temporarily tightened, and then fully tightened with the vehicle on the ground in the unladen condition.
- For vehicles with SRS, before removal of steering gear box, refer to GROUP 52B, center the front wheels and remove the ignition key. Failure to do so may damage the SRS clock spring and render the SRS system inoperative, risking serious injury.

Pre-removal Operation	Post-installation Operation
<ul style="list-style-type: none"> Power Steering Fluid Draining (Refer to GROUP 37A, On-vehicle Service – Fluid Replacement P.37A-16.) Centermember Removal (Refer to P.32-9.) Front Exhaust Pipe Removal (Refer to GROUP 15, Exhaust pipe and Main Muffler P.15-18<2.4L Engine>P.15-19<3.0L Engine>.) Stabilizer Bar Removal (Refer to GROUP 33A, Stabilizer Bar P.33A-15.) Rear Roll Stopper Removal (Refer to P.32-9.) 	<ul style="list-style-type: none"> Rear Roll Stopper Installation (Refer to P.32-9.) Stabilizer Bar Installation (Refer to GROUP 33A, Stabilizer Bar P.33A-15.) Front Exhaust Pipe Installation (Refer to GROUP 15, Exhaust Pipe and Main Muffler P.15-18<2.4L Engine>P.15-19<3.0L Engine>..) Centermember Installation (Refer to P.32-9.) Power Steering Fluid Supplying and Bleeding (Refer to GROUP 37A, On-vehicle Service – Fluid Replacement P.37A-16.) Steering Wheel Straight Ahead Position Checking.) Wheel Alignment Check and Adjustment (Refer to GROUP 33A, On-vehicle Service – Front Wheel Alignment Check and Adjustment P.33A-5.)



- REMOVAL STEPS**
1. STAY <2.4L ENGINE>
 2. LOWER ARM AND CROSSMEMBER CONNECTION
 3. LOWER ARM CLAMP

- REMOVAL STEPS (Continued)**
- POWER STEERING GEAR BOX (REFER TO GROUP 37A, POWER STEERING GEAR BOX P.37A-23.)

TSB Revision

REMOVAL STEPS (Continued)

4. CROSSMEMBER MOUNTING NUT
5. LOWER PLATE
6. CROSSMEMBER
7. STOPPER A
8. STOPPER B
9. BUSHING C

REMOVAL STEPS (Continued)

10. BUSHING A
11. BUSHING B

Required Special Tools:

- MB990828: Bushing Remover and Installer
- MB991045: Bushing Remover and Installer

CROSSMEMBER BUSHING REPLACEMENT

M1321000900056

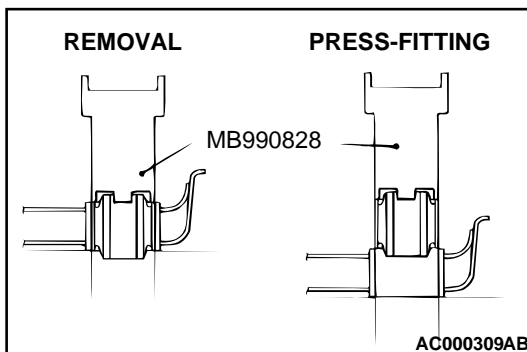
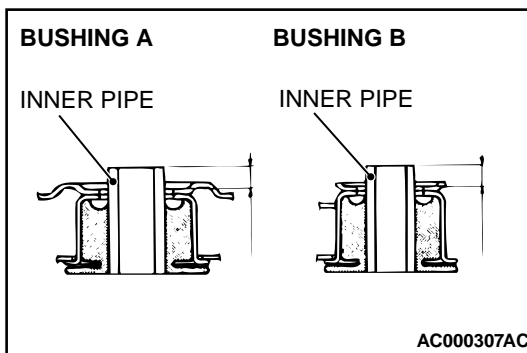
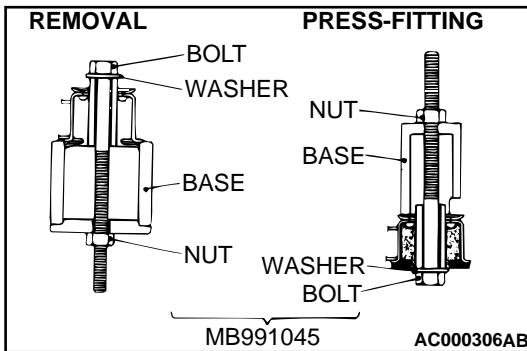
Crossmember Bushing A and B

1. Apply soapy water to the contact surface of the bushing when press-fitted the bushing.

2. The bushing should be press-fitted so that the inner pipe projection is at the standard length.

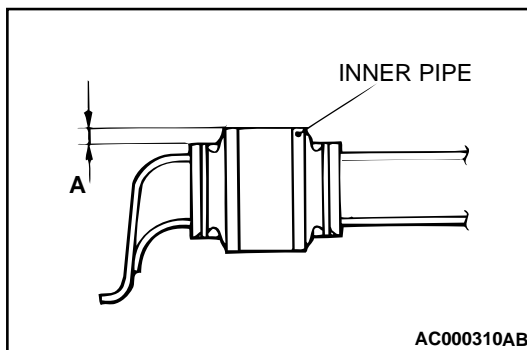
Standard values

- Bushing A: 9.0 ± 1.0 mm (0.35 ± 0.04 inch)
- Bushing B: 4.0 ± 1.0 mm (0.16 ± 0.04 inch)



Crossmember Bushing C

1. Use special tool MB990828 to drive out and press-fit the crossmember bushing C.



- The bushing should be press-fitted so that the inner pipe projection is at the standard length.

Standard value (A): 4.0 ± 0.5 mm (0.16 ± 0.02 inch)

SPECIFICATIONS

FASTENER TIGHTENING SPECIFICATION

M1321004100074

ITEMS	SPECIFICATIONS
Centermember front mounting bolt	93 N·m (69 ft-lb)
Centermember rear mounting bolt	69 – 78 N·m (51 – 58 ft-lb)
Crossmember and stay connecting bolt <2.4L ENGINE>	69 – 78 N·m (51 – 58 ft-lb)
Crossmember mounting bolt	98 – 118 N·m (72 – 87 ft-lb)
Crossmember mounting nut	88 N·m (657 ft-lb)
Dynamic damper bolt <3.0L ENGINE>	4.9 N·m (43 in-lb)
Dynamic damper nut <2.4L ENGINE>	26 N·m (19 ft-lb)
Engine mount bracket bolt	86 N·m (63 ft-lb)
Engine mount bracket nut	86 N·m (63 ft-lb)
Engine mount insulator mounting bolt	83 N·m (61 ft-lb)
Engine mount stay bolt <3.0L ENGINE>	36 N·m (27 ft-lb)
Lower arm and crossmember connecting nut	98 – 118 N·m (72 – 87 ft-lb)
Lower arm clamp bolt	81 N·m (60 ft-lb)
Transaxle and front roll stopper connecting bolt	45 N·m (33 ft-lb)
Transaxle and front roll stopper connecting nut	45 N·m (33 ft-lb)
Transaxle and rear roll stopper connecting bolt	45 N·m (33 ft-lb)
Transaxle and rear roll stopper connecting nut	45 N·m (33 ft-lb)
Transaxle mount bracket nut	57 N·m (42 ft-lb)
Transaxle mount insulator mounting nut	83 N·m (61 ft-lb)

SERVICE SPECIFICATION

M1321000300065

ITEMS	STANDARD VALUE	
Inner pipe projection mm (in)	Bushing A	9.0 ± 1.0 (0.35 ± 0.04)
	Bushing B	4.0 ± 1.0 (0.16 ± 0.04)
	Bushing C	4.0 ± 0.5 (0.16 ± 0.02)

TSB Revision

NOTES