
GROUP 52**INTERIOR AND
SUPPLEMENTAL
RESTRAINT
SYSTEM (SRS)****CONTENTS**

INTERIOR	52A
SUPPLEMENTAL RESTRAINT SYSTEM (SRS)	52B

GROUP 52A

INTERIOR

CONTENTS

GENERAL INFORMATION	52A-3	INSIDE REAR VIEW MIRROR	52A-15
GENERAL DESCRIPTION	52A-3	REMOVAL AND INSTALLATION	52A-15
SEAT BELT DIAGNOSIS	52A-3	FRONT SEAT ASSEMBLY	52A-15
SEAT BELT WARNING SYSTEM DIAGNOSIS		REMOVAL AND INSTALLATION	52A-15
.....	52A-3	DISASSEMBLY AND ASSEMBLY	52A-16
SPECIAL TOOLS	52A-3	INSPECTION	52A-18
INSTRUMENT PANEL ASSEMBLY .	52A-4	REAR SEAT ASSEMBLY	52A-20
REMOVAL AND INSTALLATION	52A-4	REMOVAL AND INSTALLATION	52A-20
DISASSEMBLY AND ASSEMBLY	52A-10	DISASSEMBLY AND ASSEMBLY	52A-21
FLOOR CONSOLE ASSEMBLY	52A-11	FRONT SEAT BELT	52A-22
REMOVAL AND INSTALLATION	52A-11	REMOVAL AND INSTALLATION	52A-22
TRIMS	52A-12	INSPECTION	52A-22
REMOVAL AND INSTALLATION	52A-12	REAR SEAT BELT	52A-23
HEADLINING	52A-14	REMOVAL AND INSTALLATION	52A-23
REMOVAL AND INSTALLATION	52A-14	SPECIFICATIONS	52A-24
		FASTENER TIGHTENING SPECIFICATIONS	
		52A-24

WARNINGS REGARDING SERVICING OF SUPPLEMENTAL RESTRAINT SYSTEM (SRS) EQUIPPED VEHICLES

⚠ WARNING

- *Improper service or maintenance of any component of the SRS, or any SRS-related component, can lead to personal injury or death to service personnel (from inadvertent firing of the air bag) or to the driver and passenger (from rendering the SRS inoperative).*
- *Service or maintenance of any SRS component or SRS-related component must be performed only at an authorized MITSUBISHI dealer.*
- *MITSUBISHI dealer personnel must thoroughly review this manual, and especially its GROUP 52B - Supplemental Restraint System (SRS) before beginning any service or maintenance of any component of the SRS or any SRS-related component.*

NOTE

The SRS includes the following components: SRS air bag control unit, SRS warning light, front impact sensors, air bag module, clock spring, and interconnecting wiring. Other SRS-related components (that may have to be removed/installed in connection with SRS service or maintenance) are indicated in the table of contents by an asterisk (*).

GENERAL INFORMATION

GENERAL DESCRIPTION

M1523000100038

OPERATION

Seat belt warning system

- When the ignition switch is turned "ON" without fastening the seat belts (seat belt switch OFF), the tone alarm will sound for approximately 6 seconds to warn the driver to fasten the seat belts. When the seat belts are fastened, the tone alarm will stop sounding.
- When the ignition switch is turned ON without fastening the seat belt, the seat belt warning light comes on to warn the driver to fasten the seat belt.

SEAT BELT DIAGNOSIS

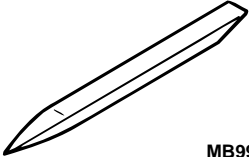
SEAT BELT WARNING SYSTEM DIAGNOSIS

M1521000700078

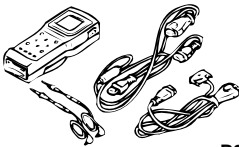
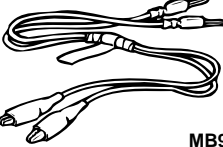
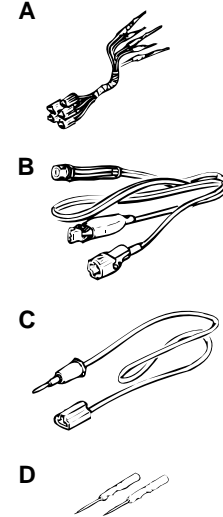
The seat belt warning system is controlled by Simplified Wiring System (SWS). For troubleshooting, refer to GROUP 54B, SWS Diagnosis [P.54B-104](#).

SPECIAL TOOLS

M1521000600071

TOOL	TOOL NUMBER AND NAME	SUPERSESSSION	APPLICATION
 MB990784	MB990784 Ornament remover	General service tool	Removal of switch, trim, etc.

TSB Revision

TOOL	TOOL NUMBER AND NAME	SUPERSESION	APPLICATION
 B991502	MB991502 Scan tool (MUT-II)	MB991496-OD	Checking the ETACS-ECU input signal
 MB991529	MB991529 Diagnostic trouble code check harness	Tool not necessary if scan tool (MUT-II) is available	Checking the ETACS-ECU input signal (When using the voltmeter)
 MB991223AE	MB991223 A: MB991219 B: MB991220 C: MB991221 D: MB991222 Harness set A: Test harness B: LED harness C: LED harness D: Probe	MB991223	Measurement of terminal voltage

INSTRUMENT PANEL ASSEMBLY

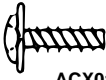



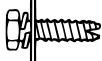

REMOVAL AND INSTALLATION

M1521001700071

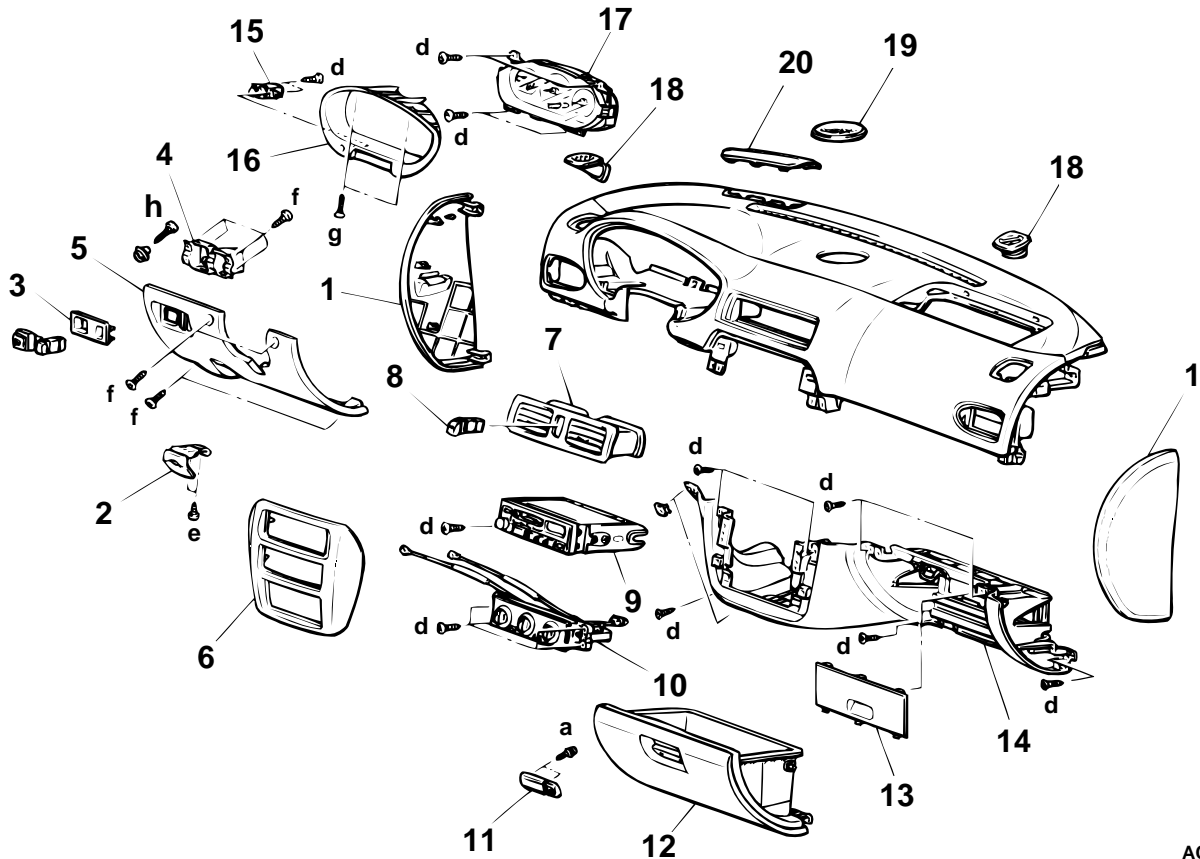
WARNING

For removal and installation of the passenger's side air bag module, always observe the service procedures described in GROUP 52B, Air Bag Module and Clock Spring P.52B-67.

The bolts and screws described below are used for installation of the instrument panel. They are indicated by symbols in the illustration.

NAME	SYMBOL	SIZE (D × L) mm (in)	COLOR	SHAPE
Tapping screw	a	4 × 12 (0.16 × 0.47)	-	 ACX01283AB
	b	5 × 16 (0.20 × 0.63)	-	
	c	5 × 12 (0.20 × 0.45)	-	 ACX01282
	d	5 × 16 (0.20 × 0.63)	-	
	e	5 × 12 (0.20 × 0.45)	Black	
	f	5 × 16 (0.20 × 0.63)	-	 ACX01284
	g	5 × 20 (0.20 × 0.79)	-	
	h	5 × 20 (0.20 × 0.79)	Black	 AC003137
Washer assembled bolt	i	6 × 16 (0.24 × 0.63)	-	 ACX02229
	j	6 × 20 (0.24 × 0.79)	-	
	k	6 × 16 (0.24 × 0.63)	-	 AC001594

D: Thread diameter L: Effective thread length



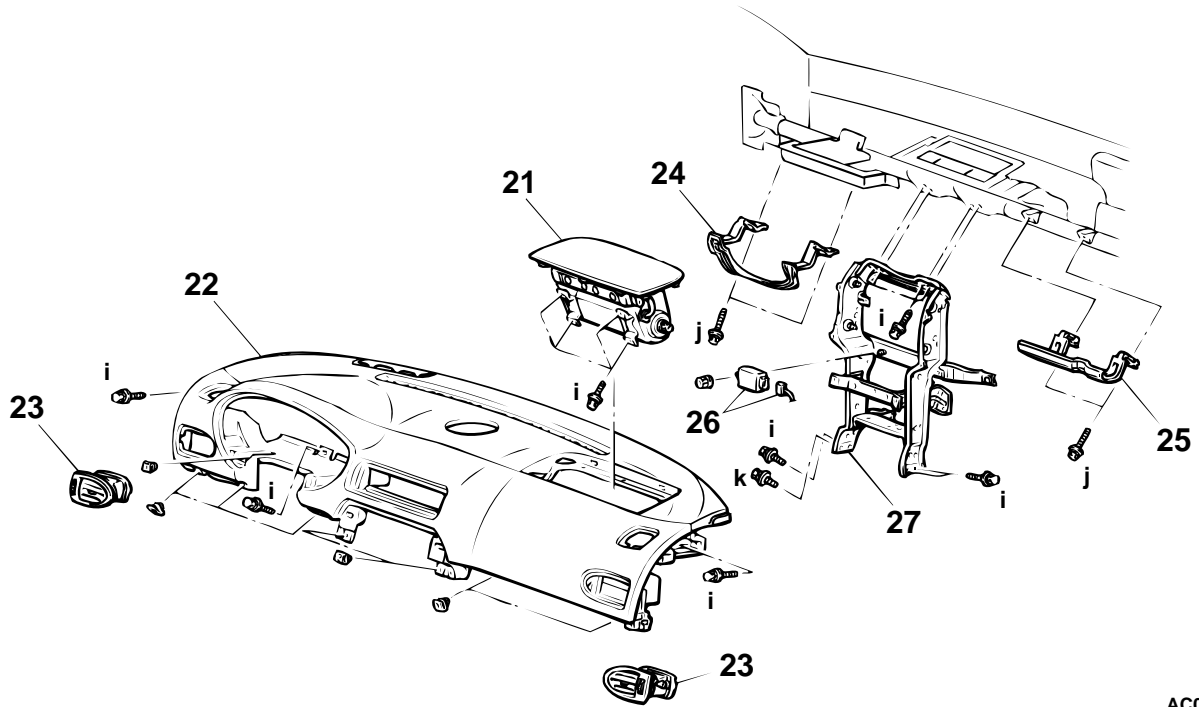
AC003138AB

REMOVAL STEPS

1. INSTRUMENT PANEL SIDE COVER
2. HOOD LOCK RELEASE HANDLE
3. SWITCH PANEL ASSEMBLY
4. CONNECTOR HOLDER
5. FRONT DRIVER'S SIDE UNDER COVER
6. CENTER PANEL ASSEMBLY
 - FOOT DISTRIBUTION DUCT (REFER TO GROUP 55, VENTILATORS P.55-43.)
7. CENTER AIR OUTLET ASSEMBLY
8. HAZARD WARNING LIGHT SWITCH (REFER TO GROUP 54A, HAZARD WARNING LIGHT SWITCH P.54A-81.)
9. RADIO AND TAPE PLAYER

REMOVAL STEPS (Continued)

10. HEATER CONTROL ASSEMBLY (REFER TO GROUP 55, HEATER CONTROL ASSEMBLY AND A/C SWITCH P.55-26.)
11. GLOVE BOX STRIKER
12. GLOVE BOX
13. FRONT PASSENGER'S UNDER COVER PLUG
14. FRONT PASSENGER'S SIDE UNDER COVER
15. RHEOSTAT (REFER TO GROUP 54A, RHEOSTAT P.54A-80.)
16. METER BEZEL
17. COMBINATION METER
18. SIDE DEFROSTER GRILLE
19. SPEAKER GRILLE
 - FRONT PILLAR TRIM (REFER TO P.52A-12.)
20. INSTRUMENT PANEL UPPER PLUG



AC003139AB

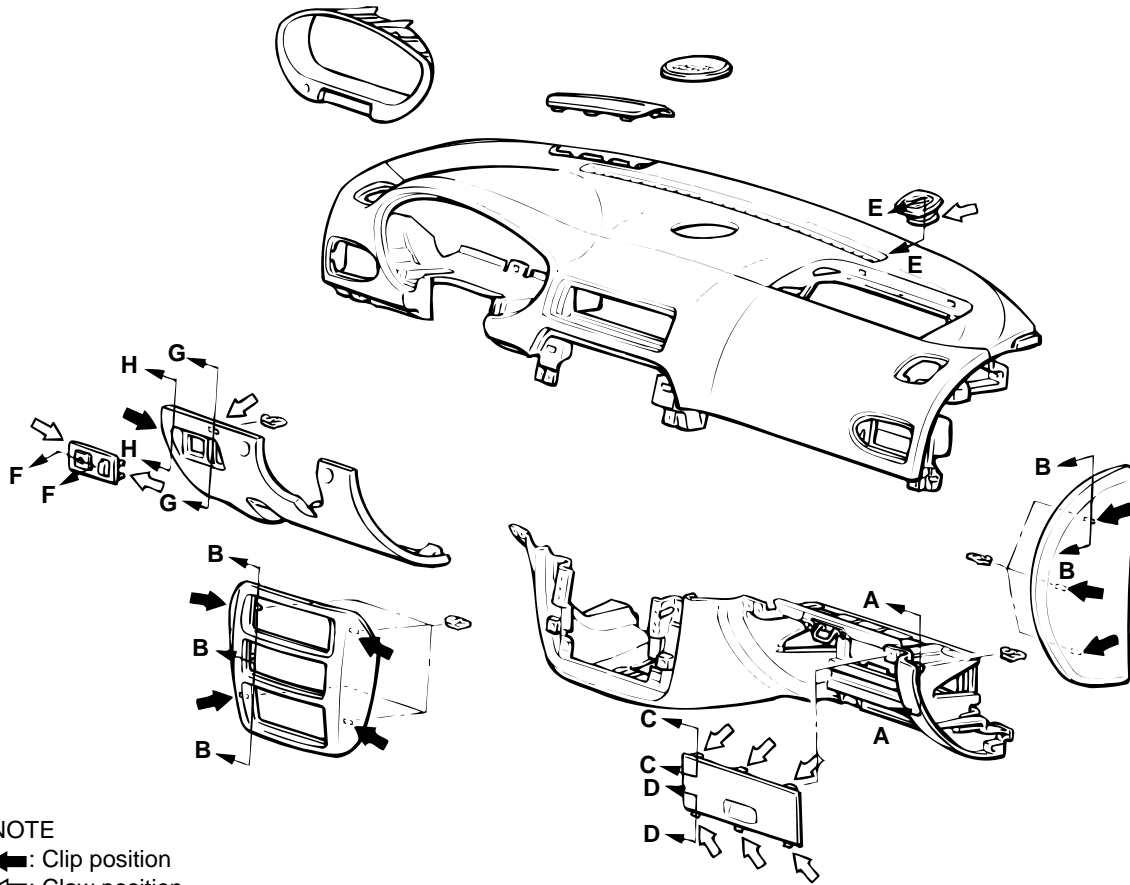
REMOVAL STEPS

- FRONT PILLAR TRIM (REFER TO [P.52A-12.](#))
- 21. AIR BAG MODULE (PASSENGER'S SIDE)
- 22. INSTRUMENT PANEL ASSEMBLY
- 23. SIDE AIR OUTLET ASSEMBLY

REMOVAL STEPS (Continued)

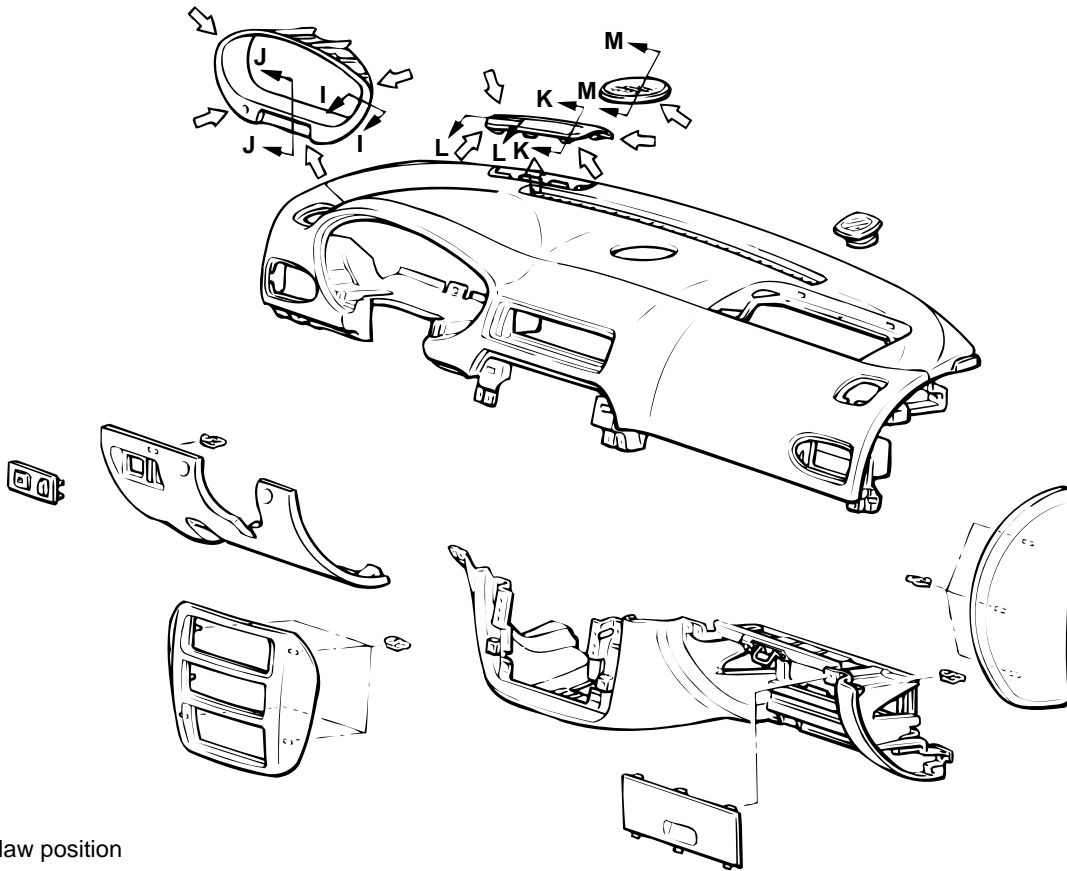
- 24. KNEE ABSORBER (DRIVER'S SIDE)
- 25. KNEE ABSORBER (PASSENGER'S SIDE)
- 26. AUTO-CRUISE CONTROL-ECU
- 27. INSTRUMENT PANEL CENTER REINFORCEMENT

CLIP AND CLAW POSITIONS



<p>SECTION A - A</p> <p>INSTRUMENT PANEL ASSEMBLY</p> <p>CLIP FRONT PASSENGER'S SIDE UNDER COVER</p>	<p>SECTION B - B</p> <p>INSTRUMENT PANEL SIDE COVER, CENTER PANEL ASSEMBLY</p> <p>INSTRUMENT PANEL ASSEMBLY CLIP</p>	<p>SECTION C - C</p> <p>FRONT PASSENGER'S SIDE UNDER COVER (CLAW)</p> <p>FRONT PASSENGER'S UNDER COVER PLUG</p>	<p>SECTION D - D</p> <p>FRONT PASSENGER'S UNDER COVER SIDE UNDER COVER FRONT PASSENGER'S UNDER COVER PLUG (CLAW)</p>
<p>SECTION E - E</p> <p>SIDE DEFROSTER GRILLE</p> <p>CLAW INSTRUMENT PANEL ASSEMBLY</p>	<p>SECTION F - F</p> <p>SWITCH PANEL ASSEMBLY</p> <p>FRONT DRIVER'S SIDE UNDER COVER CLAW</p>	<p>SECTION G - G</p> <p>FRONT DRIVER'S SIDE UNDER COVER</p>	<p>SECTION H - H</p> <p>FRONT DRIVER'S SIDE UNDER COVER</p> <p>CLIP INSTRUMENT PANEL ASSEMBLY</p>

AC003140AB



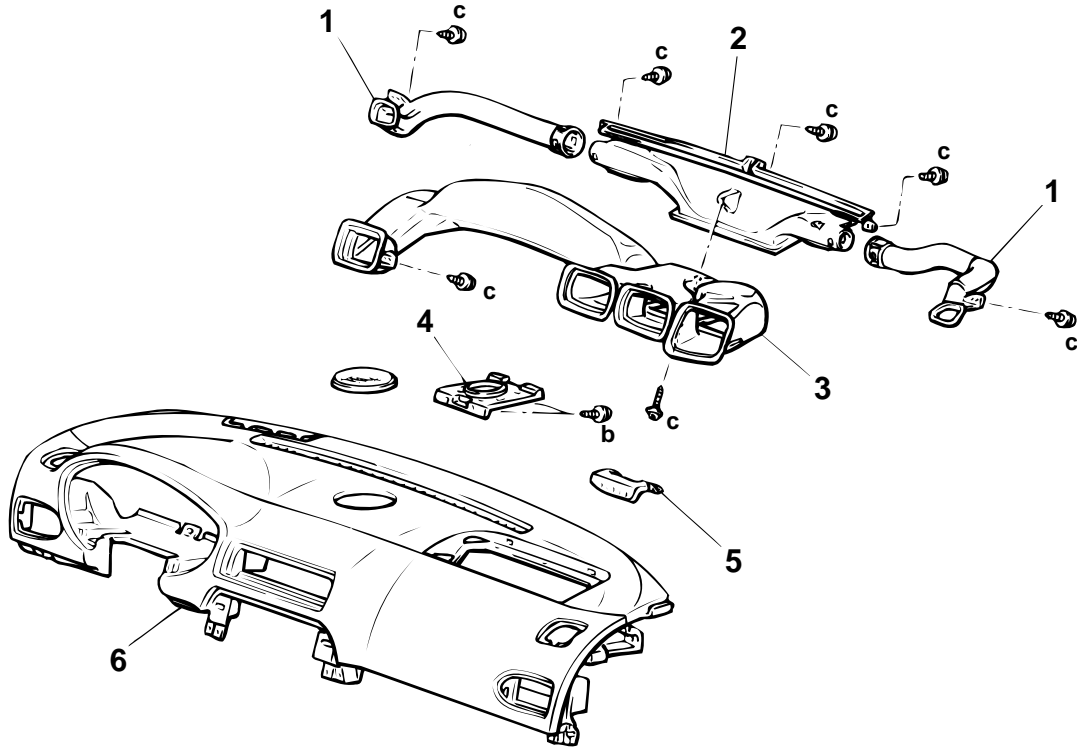
NOTE
←: Claw position

<p>SECTION I - I</p> <p>CLAW METER BEZEL</p> <p>INSTRUMENT PANEL ASSEMBLY</p>	<p>SECTION J - J</p> <p>CLAW METER BEZEL</p> <p>INSTRUMENT PANEL ASSEMBLY</p>	<p>SECTION K - K</p> <p>INSTRUMENT PANEL UPPER PLUG</p> <p>CLAW INSTRUMENT PANEL ASSEMBLY</p>	<p>SECTION L - L</p> <p>INSTRUMENT PANEL ASSEMBLY</p> <p>CLAW</p> <p>INSTRUMENT PANEL UPPER PLUG</p>
<p>SECTION M - M</p> <p>INSTRUMENT PANEL ASSEMBLY</p> <p>SPEAKER GRILLE</p> <p>CLAW</p>			

AC003141AB

DISASSEMBLY AND ASSEMBLY

M1521001900075



AC003142AB

DISASSEMBLY STEPS

1. SIDE DEFROSTER DUCT
2. DEFROSTER DUCT
3. DISTRIBUTION DUCT

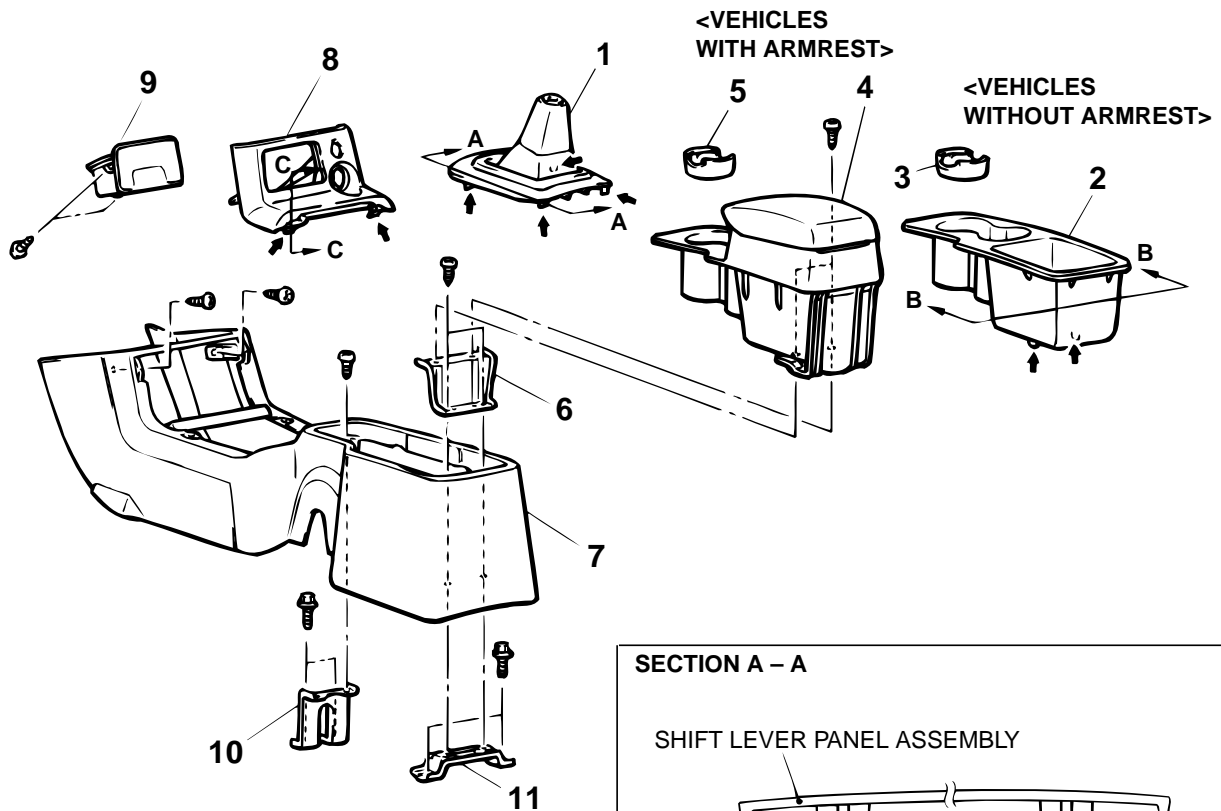
DISASSEMBLY STEPS (Continued)

4. SPEAKER PANEL
5. AIR BAG REINFORCEMENT
6. INSTRUMENT PANEL

FLOOR CONSOLE ASSEMBLY

REMOVAL AND INSTALLATION

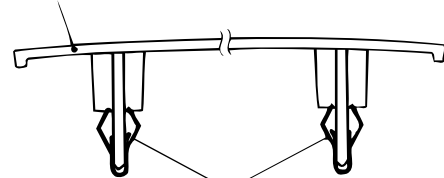
M1521002200079



NOTE
←: Clip position

SECTION A - A

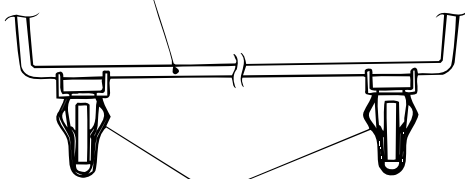
SHIFT LEVER PANEL ASSEMBLY



CLIPS

SECTION B - B

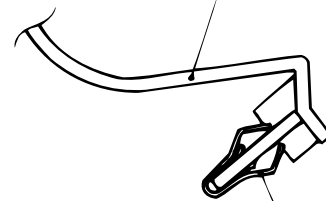
CUP TRAY



CLIPS

SECTION C - C

CENTER LOWER PANEL ASSEMBLY



CLIP

AC003143AB

REMOVAL STEPS

1. SHIFT LEVER PANEL ASSEMBLY
2. CUP TRAY <VEHICLES WITHOUT ARMREST>
3. CUP HOLDER BOTTOM PANEL
4. ARMREST ASSEMBLY <VEHICLES WITH ARMREST>
5. CUP HOLDER BOTTOM PANEL

REMOVAL STEPS (Continued)

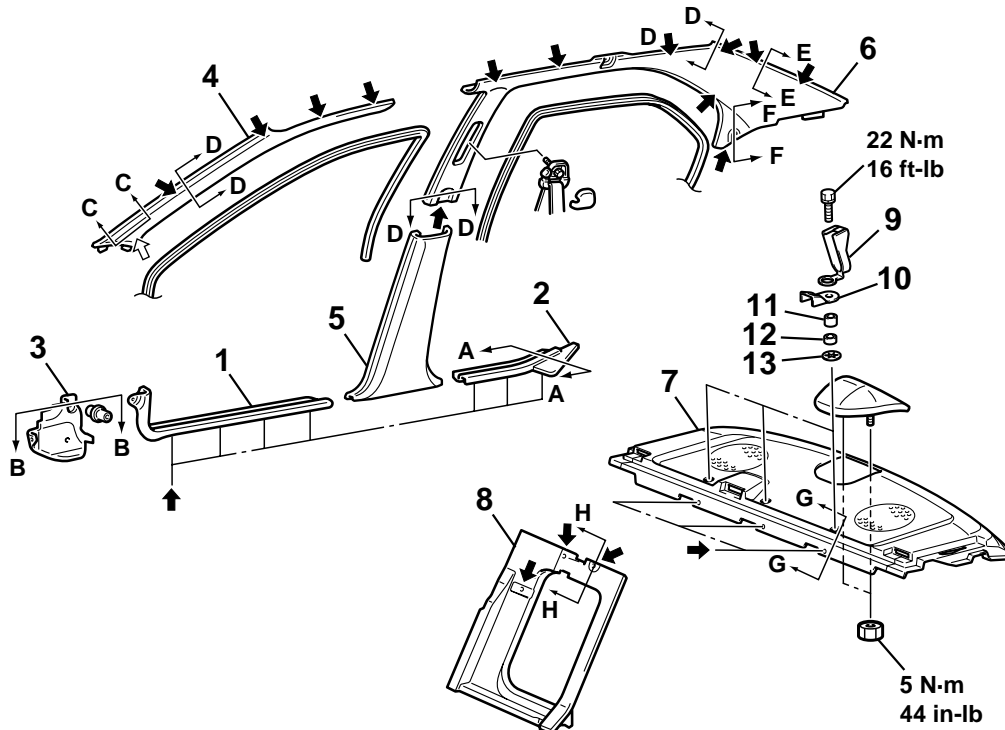
6. TRAY BRACKET A <VEHICLES WITH ARMREST>
7. FLOOR CONSOLE
8. CENTER LOWER PANEL ASSEMBLY
9. ASHTRAY
10. CONSOLE BRACKET C
11. CONSOLE BRACKET A

TSB Revision

TRIMS

REMOVAL AND INSTALLATION

M1521001100079



NOTE
 ←: Clip position
 ⇐: Claw position

<p>SECTION A – A</p> <p>SCUFF PLATE CLIP</p>	<p>SECTION B – B</p> <p>CLIP COWL SIDE TRIM</p>	<p>SECTION C – C</p> <p>FRONT PILLAR TRIM CLAW</p>	<p>SECTION D – D</p> <p>REAR PILLAR TRIM CLIP</p>
<p>SECTION E – E</p> <p>CLIP REAR PILLAR TRIM</p>	<p>SECTION F – F</p> <p>CLIP REAR PILLAR TRIM</p>	<p>SECTION G – G</p> <p>REAR SHELF TRIM CLIP</p>	<p>SECTION H – H</p> <p>REAR SHELF TRIM CLIP</p>

AC003718AB

TRIMS REMOVAL STEPS

1. FRONT SCUFF PLATE
2. REAR SCUFF PLATE
3. COWL SIDE TRIM
4. FRONT PILLAR TRIM
5. CENTER PILLAR LOWER TRIM
6. REAR PILLAR TRIM

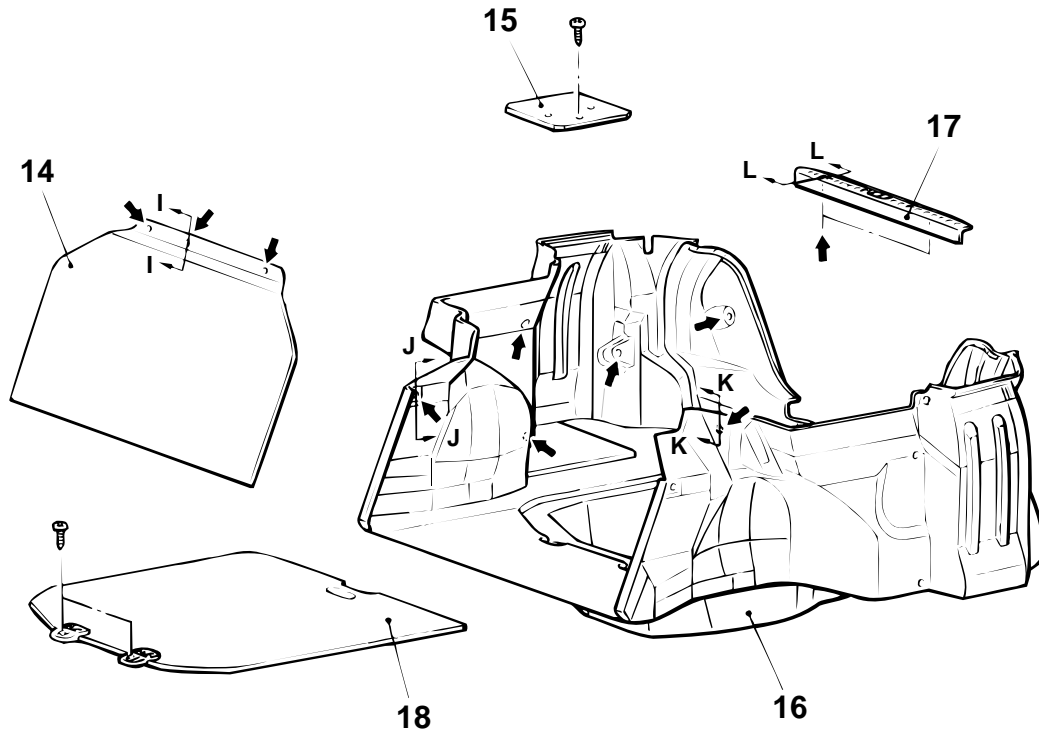
TRIMS REMOVAL STEPS

7. REAR SHELF TRIM
 8. SHELF FRONT COVER
- UPPER TETHER ANCHOR
REMOVAL STEPS**
9. TETHER ANCHOR BRACKET
 10. COVER

TSB Revision

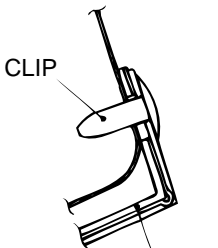

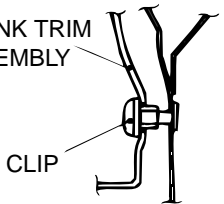
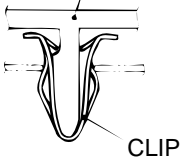
**UPPER TETHER ANCHOR
REMOVAL STEPS (Continued)**

11. SPACER 10mm (0.4 inch)
12. SPACER 7mm (0.3 inch)
13. FIBER WASHER



NOTE

←: Clip position

SECTION I - I	SECTION J - J	SECTION K - K	SECTION L - L
 <p>CLIP</p> <p>TRUNK FRONT TRIM</p>	 <p>CLIP</p> <p>TRUNK TRIM ASSEMBLY</p>	 <p>TRUNK TRIM ASSEMBLY</p> <p>CLIP</p>	 <p>REAR END TRIM COVER</p> <p>CLIP</p>

AC003145AB

REMOVAL STEPS

14. TRUNK FRONT TRIM
15. CORNER PLATE
16. TRUNK TRIM ASSEMBLY

REMOVAL STEPS (Continued)

17. REAR END TRIM COVER
18. TRUNK FLOOR BOARD

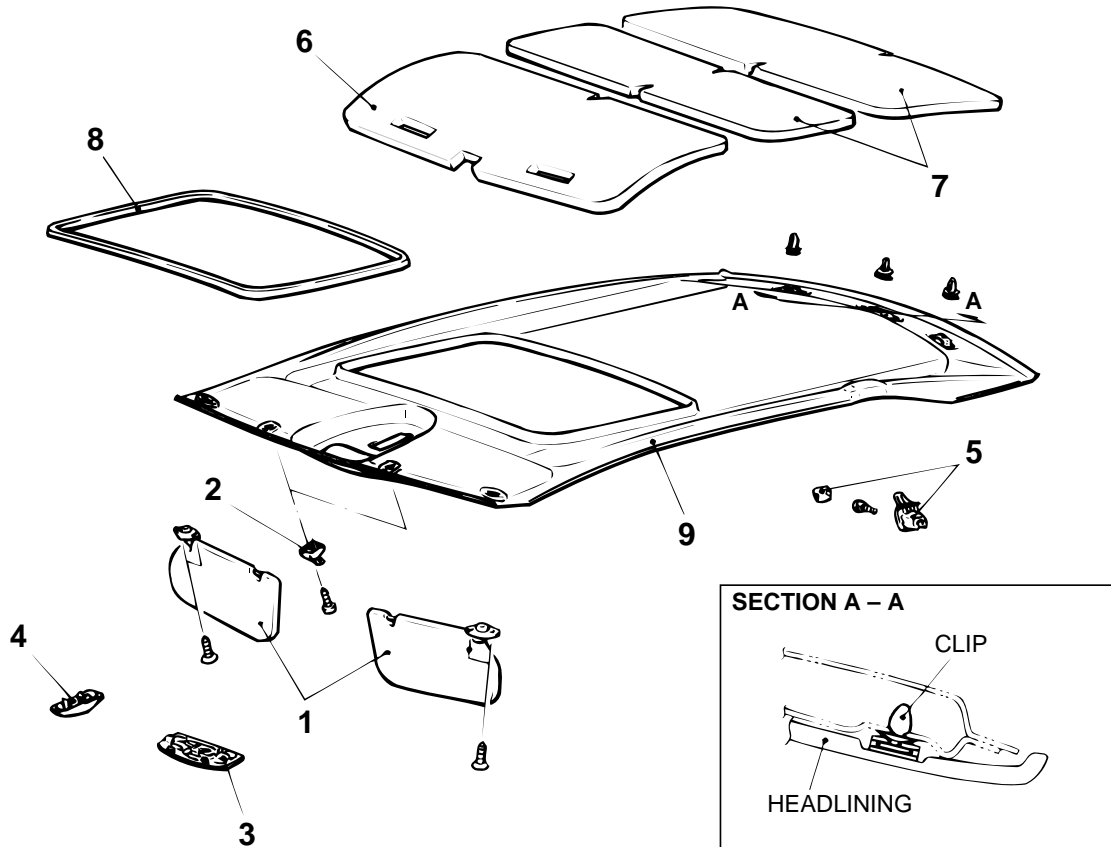
HEADLINING

REMOVAL AND INSTALLATION

M1521001400070

Pre-removal and Post-installation Operation

- Front Pillar Trim, Center Pillar Lower Trim and Rear Pillar Trim Removal and Installation (Refer to P.52A-12.)



AC003146AB

REMOVAL STEPS

1. SUNVISOR ASSEMBLY
2. SUNVISOR HOLDER
3. DOME LIGHT ASSEMBLY
4. SUNROOF SWITCH COVER
<VEHICLES WITH SUNROOF>
5. COAT HANGER

REMOVAL STEPS (Continued)

6. FRONT ROOF PAD
7. REAR ROOF PAD
8. HEADLINING TRIM <VEHICLES
WITH SUNROOF>
9. HEADLINING

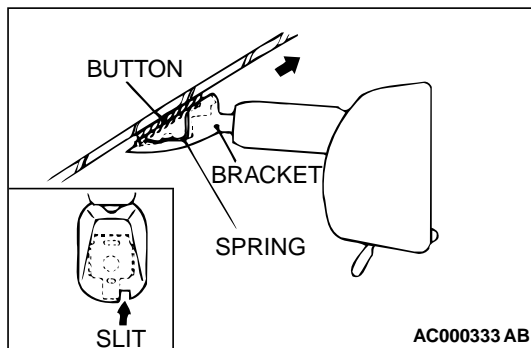
INSIDE REAR VIEW MIRROR

REMOVAL AND INSTALLATION

M1521002700074

Insert a narrow flat-tip screwdriver into the slit in the inside rear view mirror in the direction of the arrow in the illustration.

NOTE: While the spring is pushed in, connection between the spring and the pawl of the button is released.



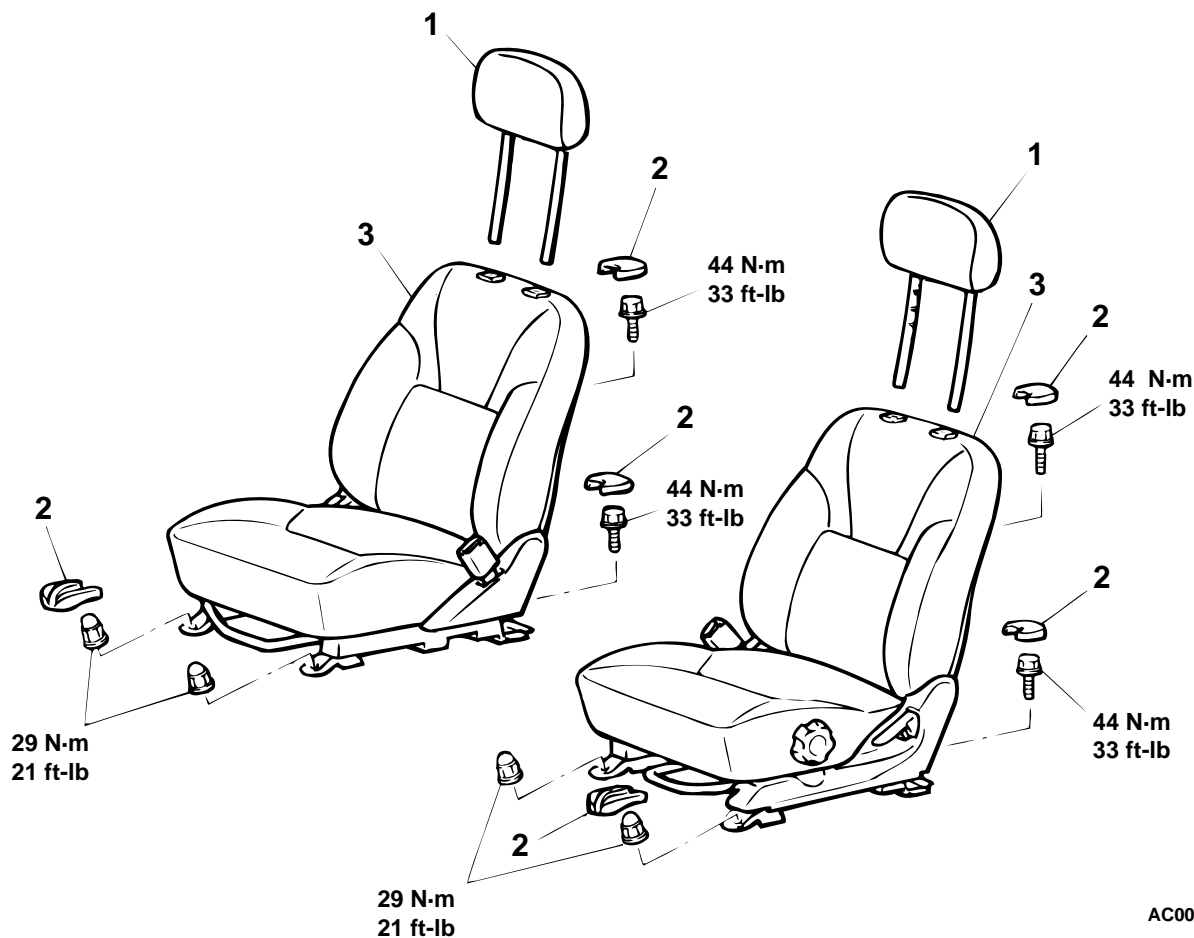
FRONT SEAT ASSEMBLY

REMOVAL AND INSTALLATION

M1522001300076

⚠ WARNING

Before removing a seat equipped with a side air bag module, refer to **GROUP 52B, SRS Service Precautions P.52B-15**.



TSB Revision

1. HEAD RESTRAINT

**FRONT SEAT ASSEMBLY
REMOVAL STEPS**

- HARNESS CONNECTOR
- 2. SEAT ANCHOR COVER
- >>A<< 3. FRONT SEAT ASSEMBLY

INSTALLATION SERVICE POINT

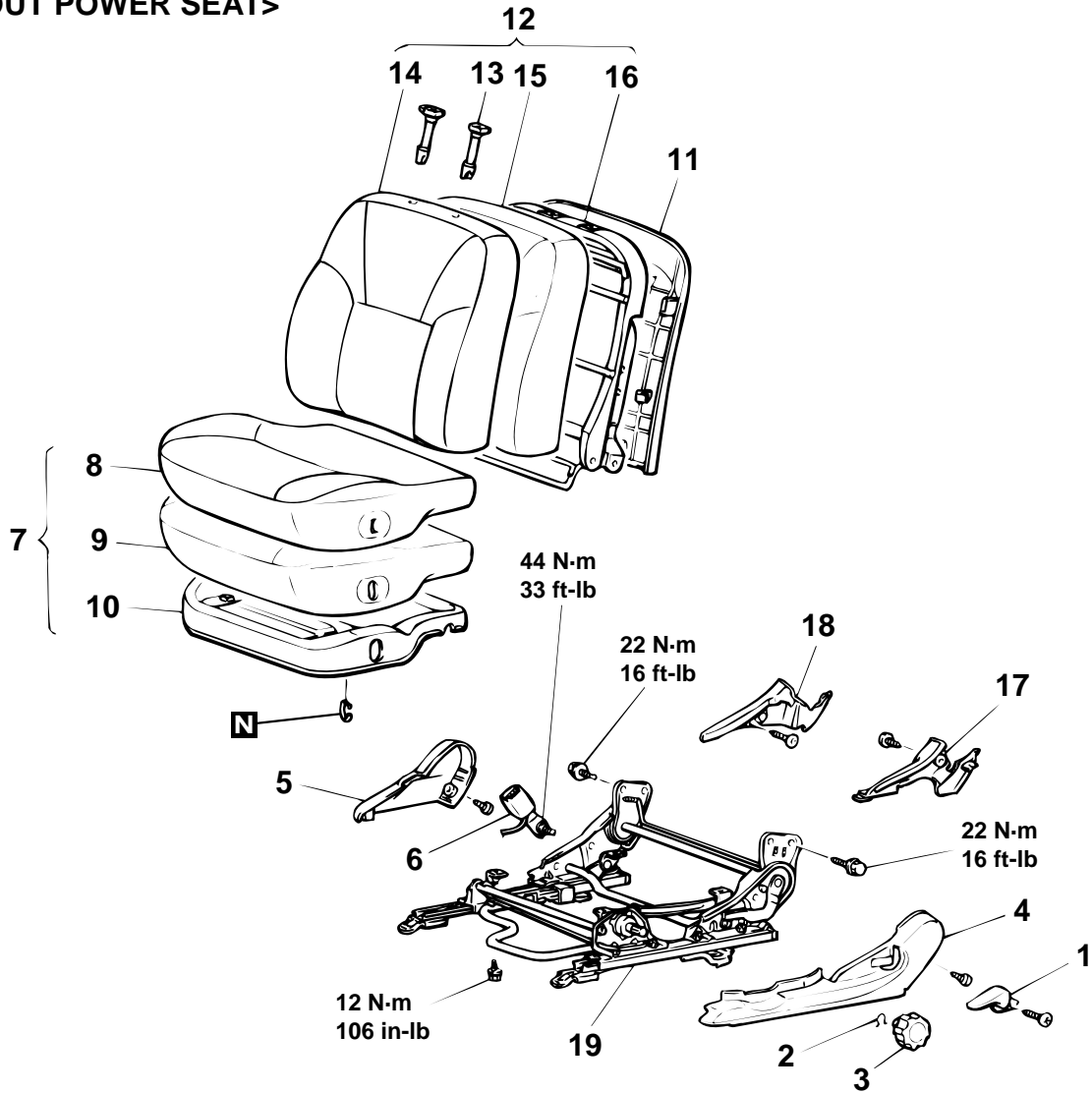
>>A<< **FRONT SEAT ASSEMBLY INSTALLATION**

First install all of the front seat assembly mounting nuts and bolts, and then tighten them to the specified torque.

DISASSEMBLY AND ASSEMBLY

M1522001500100

<WITHOUT POWER SEAT>



AC003663AB

DISASSEMBLY STEPS

1. RECLINING ADJUSTER KNOB
2. CLIP
3. HEIGHT ADJUSTER KNOB
4. FRONT SEAT SHIELD COVER
5. FRONT SEAT SHIELD COVER
6. INNER SEAT BELT
7. FRONT SEAT CUSHION ASSEMBLY
8. FRONT SEAT CUSHION COVER

DISASSEMBLY STEPS (Continued)

9. FRONT SEAT CUSHION PAD
10. FRONT SEAT CUSHION FRAME
11. FRONT SEATBACK PANEL
12. FRONT SEATBACK ASSEMBLY
13. HEADRESTRAINT GUIDE
14. FRONT SEATBACK COVER
15. FRONT SEATBACK PAD

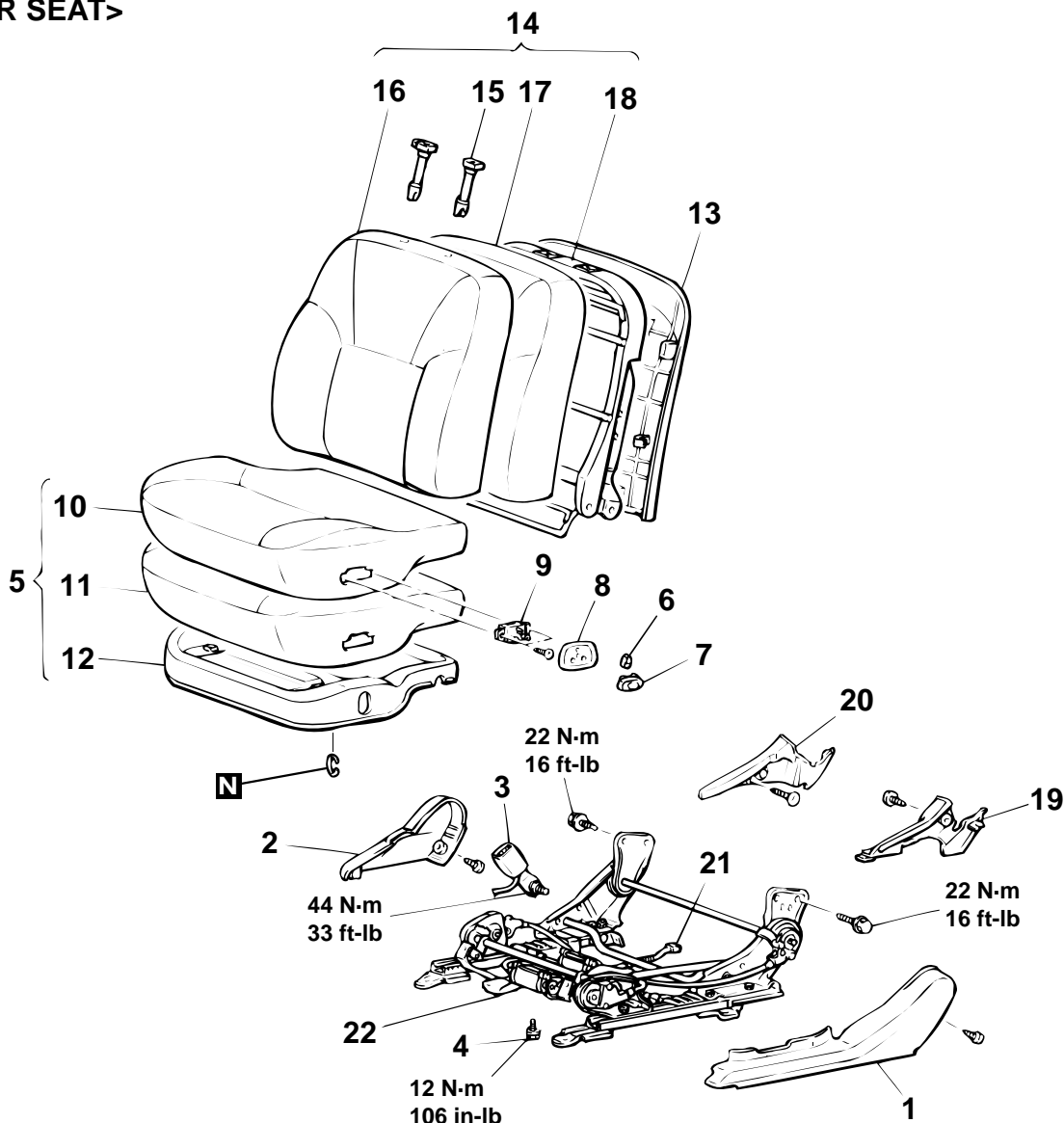
<<A>>

TSB Revision

DISASSEMBLY STEPS (Continued)

16. FRONT SEATBACK FRAME
<VEHICLES WITHOUT SRS SIDE AIR BAG>
17. FRONT SEAT INNER COVER
18. FRONT SEAT INNER COVER
19. FRONT SEAT ADJUSTER ASSEMBLY

<POWER SEAT>



AC003665AB

DISASSEMBLY STEPS

1. FRONT SEAT SHIELD COVER
2. FRONT SEAT SHIELD COVER
3. INNER SEAT BELT
4. BOLT
5. FRONT SEAT CUSHION ASSEMBLY
6. FRONT SEAT RECLINING ADJUSTER LEVER
7. FRONT SEAT SLIDE ADJUSTER LEVER
8. GARNISH
9. POWER SEAT SWITCH

<<A>>

DISASSEMBLY STEPS (Continued)

10. FRONT SEAT CUSHION COVER
11. FRONT SEAT CUSHION PAD
12. FRONT SEAT CUSHION FRAME
13. FRONT SEATBACK PANEL
14. FRONT SEATBACK ASSEMBLY
15. HEADRESTRAINT GUIDE
16. FRONT SEATBACK COVER
17. FRONT SEATBACK PAD
18. FRONT SEATBACK FRAME
<VEHICLES WITHOUT SRS SIDE AIR BAG>

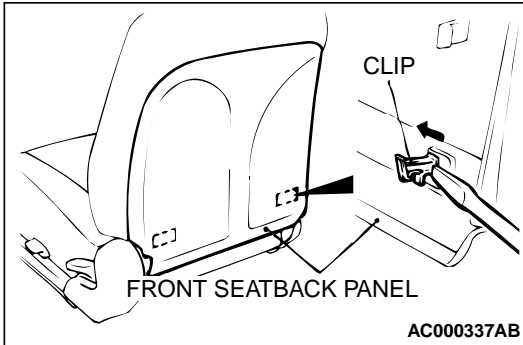
DISASSEMBLY STEPS (Continued)

- 19. FRONT SEAT INNER COVER
- 20. FRONT SEAT INNER COVER
- 21. POWER SEAT HARNESS
- 22. POWER SEAT ADJUSTER ASSEMBLY

DISASSEMBLY SERVICE POINT

<<A>> FRONT SEATBACK PANEL REMOVAL

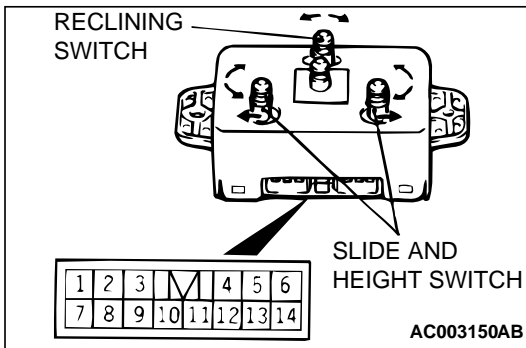
- 1. Using a screwdriver or similar tool, push in the clip of the front seatback panel lower portion to remove it.
- 2. Pull down the front seatback panel to remove it.



INSPECTION

M1522001600044

POWER SEAT SWITCH CONTINUITY CHECK



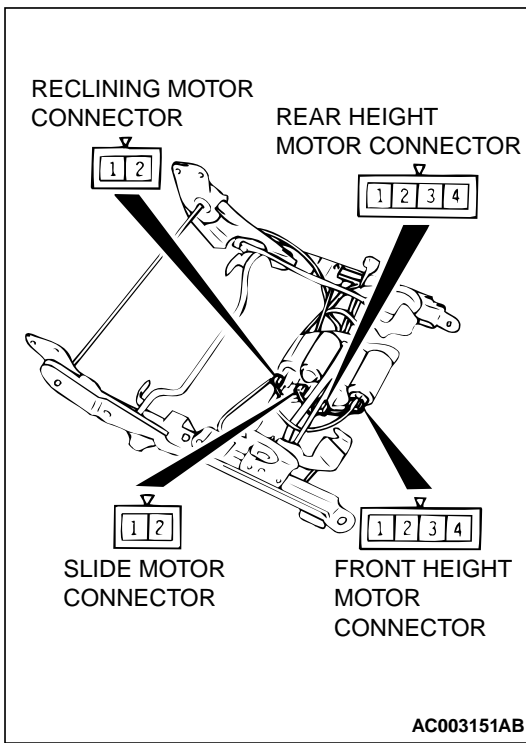
SWITCH POSITION		TESTER CONNECTION	SPECIFIED CONDITION
Reclining switch	Forward	3-13, 4-14	Continuity
	Backward	3-14, 4-13	Continuity
Slide switch	Forward	8-13, 7-14	Continuity
	Back ward	7-13, 8-14	Continuity
Front height switch	Up	5-14, 6-13	Continuity
	Down	5-13, 6-14	Continuity
Rear height switch	Up	1-13, 2-14	Continuity
	Down	1-14, 2-13	Continuity
All switches	OFF	-	No continuity

POWER SEAT MOTOR OPERATION CHECK

Inspect the operation of each motor according to the following procedures.

- 1. Disconnect the connector for each motor.

TSB Revision



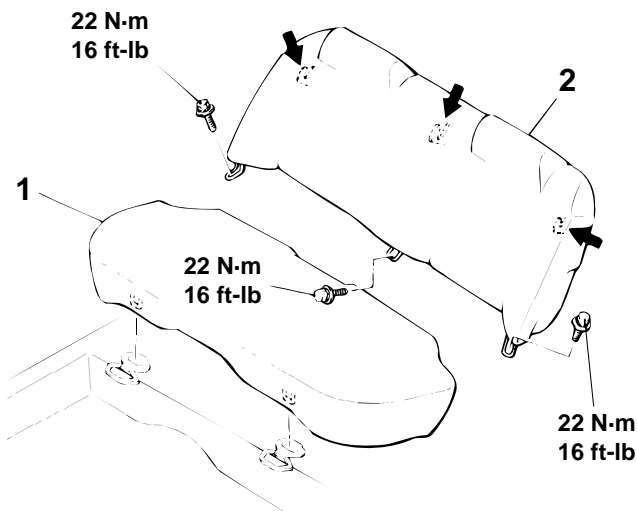
2. When the battery is connected directly to the motor terminals, check if the motors run smoothly, and check if each setting mechanism runs in the direction shown in the table below for each motor.
 - (1) Connect the battery power source to the terminal 3 and ground the terminal 4 for the front/rear height down side and connect the battery power source to the terminal 4 and ground the terminal 3 for the front/rear height up side.
 - (2) Connect the battery power source to the terminal 1 and ground the terminal 2 for the slide backward side and connect the battery power source to the terminal 2 and ground the terminal 1 for the slide forward side.
 - (3) Connect the battery power source to the terminal 2 and ground the terminal 1 for the reclining backward side and connect the battery power source to the terminal 1 and ground the terminal 2 for the reclining forward side.
3. If there is an abnormality, replace the power seat adjuster assembly.

REAR SEAT ASSEMBLY

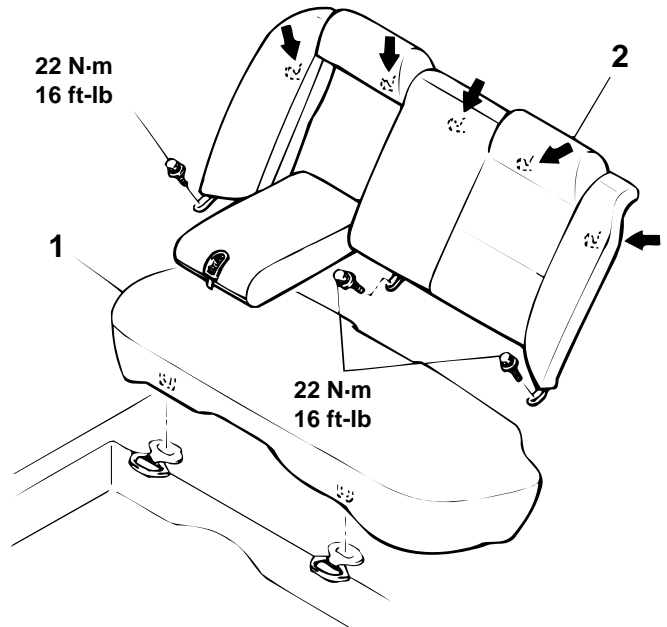
REMOVAL AND INSTALLATION

M1522001800071

<VEHICLES WITHOUT PARTIAL TRUNK OPENING>



<VEHICLES WITH PARTIAL TRUNK OPENING>



NOTE

←: Hook position

REMOVAL STEPS

- <<A>> 1. REAR SEAT CUSHION
>>A<< 2. REAR SEATBACK

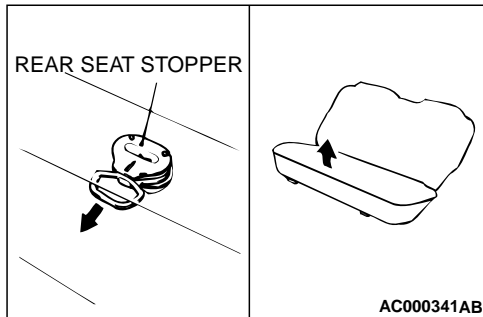
AC003152AB

TSB Revision

REMOVAL SERVICE POINT

<<A>> REAR SEAT CUSHION REMOVAL

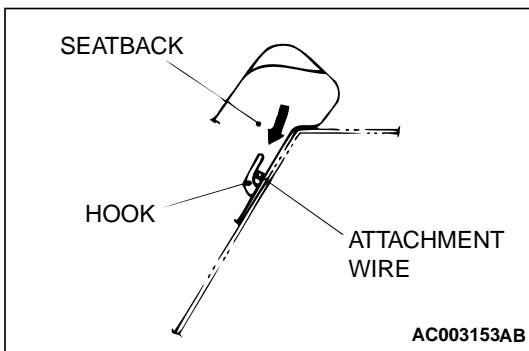
While pulling the rear seat stopper pulled, lift up the seat cushion to remove it.



INSTALLATION SERVICE POINT

<<A>> REAR SEATBACK INSTALLATION

Push the seatback in the direction indicated in the illustration; then securely attach the attachment wire to the body side hook and install the seatback.

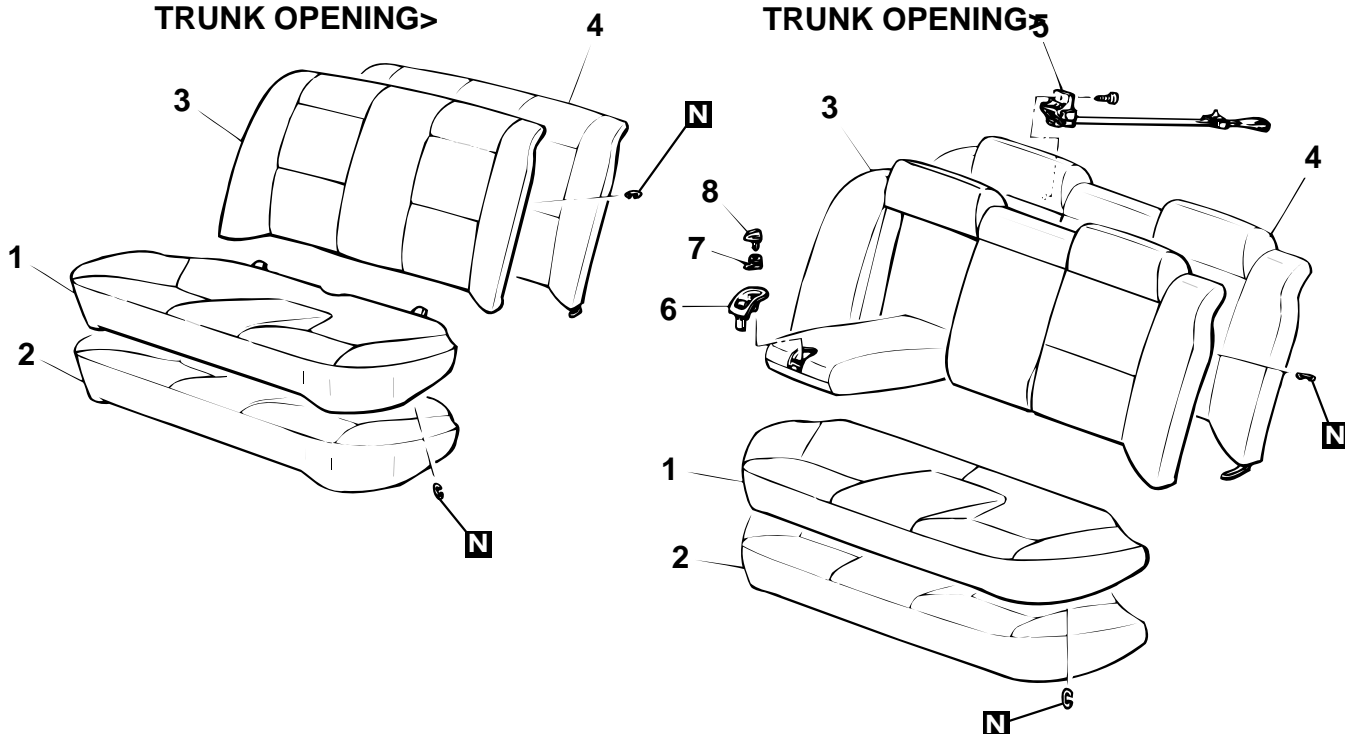


DISASSEMBLY AND ASSEMBLY

M1522002000089

<VEHICLES WITHOUT PARTIAL TRUNK OPENING>

<VEHICLES WITH PARTIAL TRUNK OPENING>



DISASSEMBLY STEPS

1. REAR SEAT CUSHION COVER
2. REAR SEAT CUSHION PAD
3. REAR SEATBACK COVER
4. REAR SEATBACK PAD

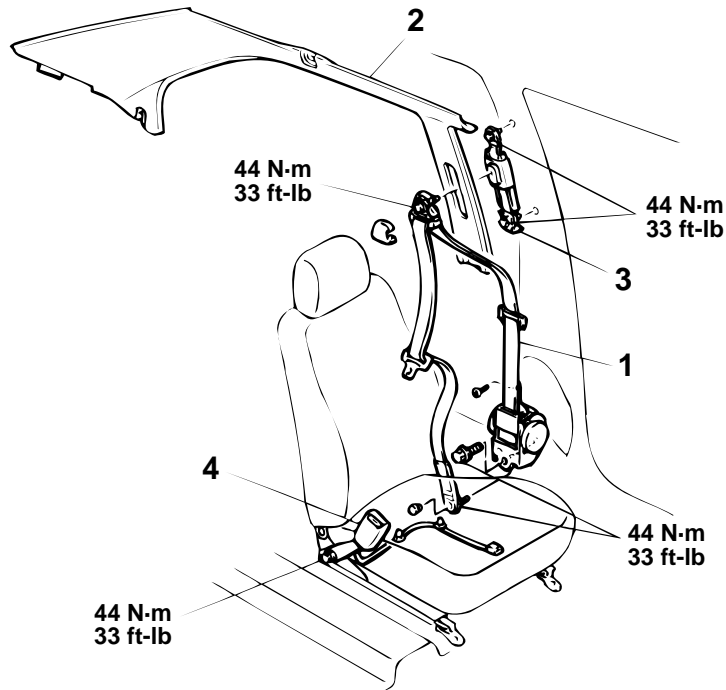
DISASSEMBLY STEPS (Continued)

5. LOCK A ASSEMBLY
6. LOCK B ASSEMBLY
7. STOPPER
8. LOCK KNOB

FRONT SEAT BELT

REMOVAL AND INSTALLATION

M1523001300079



AC003155AB

OUTER SEAT BELT REMOVAL STEPS

1. OUTER SEAT BELT
2. REAR PILLAR TRIM (REFER TO [P.52A-12.](#))
3. ADJUSTABLE SEAT BELT ANCHOR

INNER SEAT BELT REMOVAL STEPS

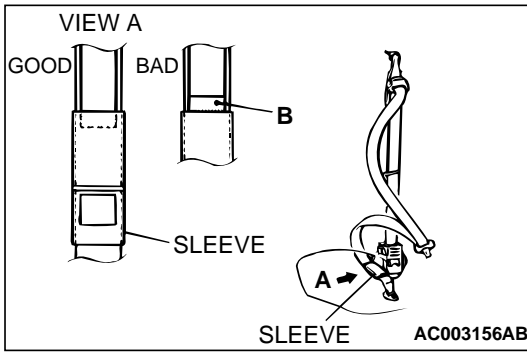
- FRONT SEAT ASSEMBLY (REFER TO [P.52A-15.](#))
- FRONT SEAT SHIELD COVER (REFER TO [P.52A-16.](#))
- 4. INNER SEAT BELT

INSPECTION

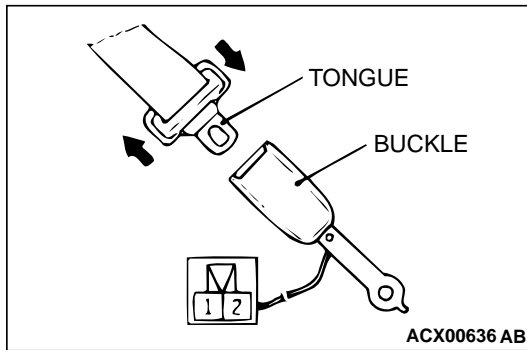
M1523001400076

OUTER SEAT BELT CHECK

Check that the B section (red) of the label attached to the outer seat belt is not exposed from the outer seat belt sleeve. If it is exposed, replace the outer seat belt.



SEAT BELT BUCKLE SWITCH CONTINUITY CHECK

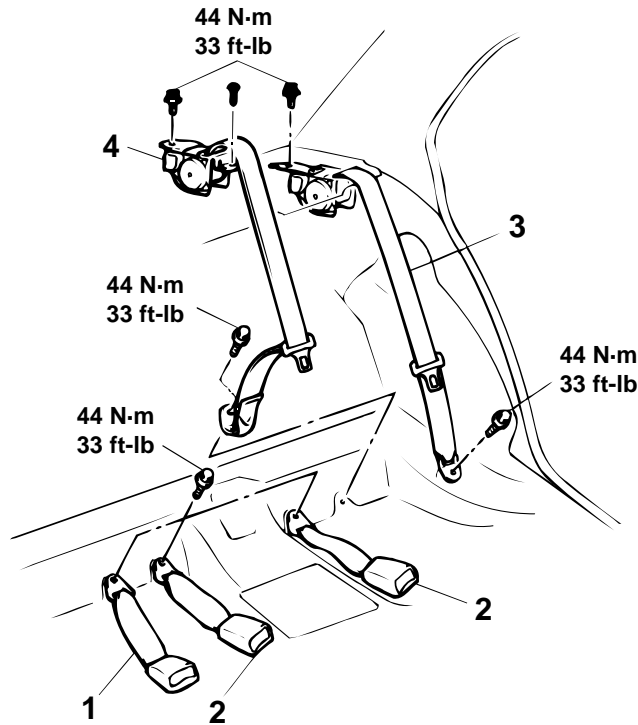


ITEMS	TESTER CONNECTION	SPECIFIED CONDITION
Fastened seat belt	–	No continuity
Unfastened seat belt	1 – 2	Continuity

REAR SEAT BELT

REMOVAL AND INSTALLATION

M1523001600070



AC003157AB

REMOVAL STEPS

- REAR SEAT (REFER TO [P.52A-20.](#))
- 1. REAR CENTER SEAT BELT ASSEMBLY (INNER)
- 2. REAR SEAT BELT ASSEMBLY (INNER)

REMOVAL STEPS (Continued)

- REAR SHELF TRIM (REFER TO [P.52A-12.](#))
- 3. REAR SEAT BELT ASSEMBLY (OUTER)
- 4. CENTER REAR SEAT BELT ASSEMBLY (OUTER)

SPECIFICATIONS

FASTENER TIGHTENING SPECIFICATIONS

M1521004100078

ITEMS	SPECIFICATION
Adjustable seat belt anchor bolt	44 N-m (33 ft-lb)
Catch bolt	12 N-m (106 in-lb)
Front inner seat belt bolt	44 N-m (33 ft-lb)
Front outer seat belt bolt	44 N-m (33 ft-lb)
Front seat bolt	44 N-m (33 ft-lb)
Front seat nut	29 N-m (21 ft-lb)
Front seat reclining adjuster bolt	22 N-m (16 ft-lb)
High-mounted stoplight nut	5 N-m (44 in-lb)

TSB Revision

ITEMS	SPECIFICATION
Rear center seat belt bolt	44 N·m (33 ft-lb)
Rear inner seat belt bolt	44 N·m (33 ft-lb)
Rear outer seat belt bolt	44 N·m (33 ft-lb)
Rear center seat belt bolt	44 N·m (33 ft-lb)
Rear seatback bolt	22 N·m (16 ft-lb)
Tether anchor bolt	22 N·m (16 ft-lb)