

GROUP 52A

INTERIOR

CONTENTS

SEAT BELT DIAGNOSIS	52A-2	INSPECTION	52A-12
SEAT BELT WARNING SYSTEM DIAGNOSIS	52A-2	DISASSEMBLY AND ASSEMBLY	52A-13
		INSPECTION	52A-16
SPECIAL TOOLS	52A-2	REAR SEAT ASSEMBLY	52A-18
		REMOVAL AND INSTALLATION	52A-18
		DISASSEMBLY AND ASSEMBLY	52A-19
INSTRUMENT PANEL ASSEMBLY*	52A-2	THIRD SEAT ASSEMBLY	52A-24
REMOVAL AND INSTALLATION	52A-2	DISASSEMBLY AND ASSEMBLY	52A-24
DISASSEMBLY AND ASSEMBLY	52A-6	FRONT SEAT BELT	52A-28
FLOOR CONSOLE ASSEMBLY	52A-7	REMOVAL AND INSTALLATION	52A-28
REMOVAL AND INSTALLATION	52A-7	INSPECTION	52A-28
TRIMS	52A-8	REAR SEAT BELT	52A-30
REMOVAL AND INSTALLATION	52A-8	REMOVAL AND INSTALLATION	52A-30
HEADLINING	52A-10	SPECIFICATIONS	52A-32
REMOVAL AND INSTALLATION	52A-10	FASTENER TIGHTENING SPECIFICATIONS	52A-32
FRONT SEAT ASSEMBLY	52A-11		
REMOVAL AND INSTALLATION	52A-11		

WARNINGS REGARDING SERVICING OF SUPPLEMENTAL RESTRAINT SYSTEM (SRS) EQUIPPED VEHICLES

WARNING

- *Improper service or maintenance of any component of the SRS, or any SRS-related component, can lead to personal injury or death to service personnel (from inadvertent firing of the air bag) or to the driver and passenger (from rendering the SRS inoperative).*
- *Service or maintenance of any SRS component or SRS-related component must be performed only at an authorized MITSUBISHI dealer.*
- *MITSUBISHI dealer personnel must thoroughly review this manual, and especially its GROUP 52B - Supplemental Restraint System (SRS) before beginning any service or maintenance of any component of the SRS or any SRS-related component.*

NOTE

The SRS includes the following components: SRS air bag control unit, SRS warning light, front impact sensors, air bag module, clock spring, and interconnecting wiring. Other SRS-related components (that may have to be removed/installed in connection with SRS service or maintenance) are indicated in the table of contents by an asterisk (*).

SEAT BELT DIAGNOSIS

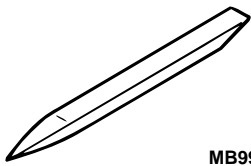
SEAT BELT WARNING SYSTEM DIAGNOSIS

M1523004500038

The seat belt warning system is controlled by the Simplified Wiring System (SWS). For troubleshooting, refer to GROUP 54B, SWS Diagnosis [P.54Bb-69](#).

SPECIAL TOOLS

M1521000600026

TOOL	TOOL NUMBER AND NAME	SUPERSESSON	APPLICATION
 MB990784	MB990784 Ornament remover	General service tool	Removal of switch, trim, etc.

INSTRUMENT PANEL ASSEMBLY





REMOVAL AND INSTALLATION


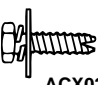

M1521001700242

⚠ WARNING

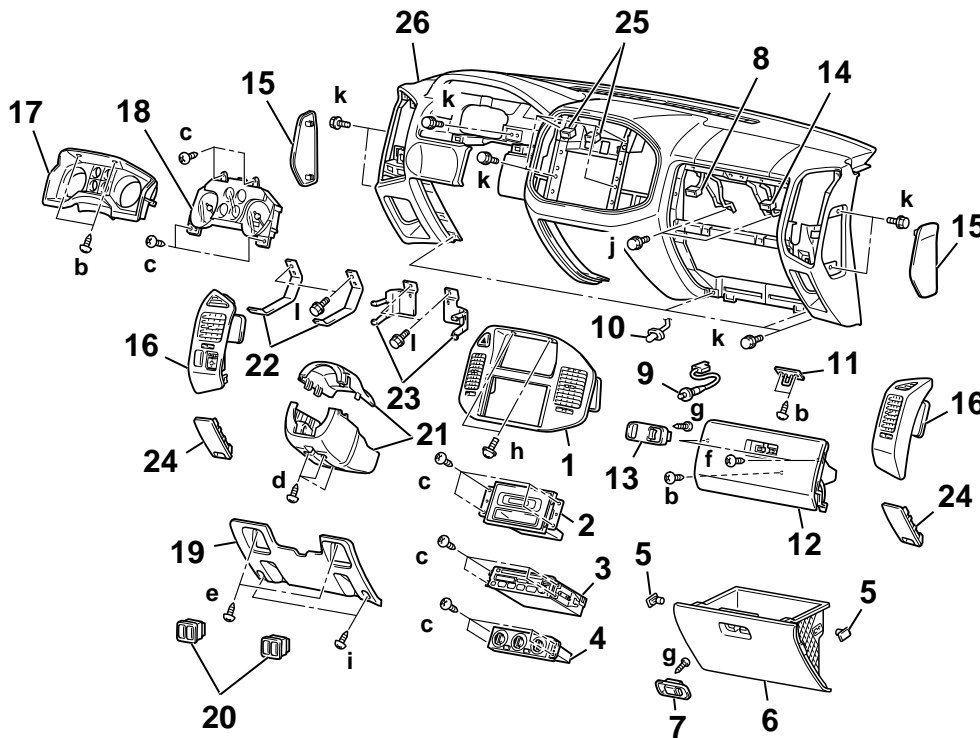
For removal and installation of the passenger's side air bag module, always observe the service procedures described in GROUP 52B, Air Bag Module and Clock Spring [P.52Ba-33](#).

The bolts and screws described below are used for installation of the instrument panel. They are indicated by symbols in the illustration.

NAME	SYMBOL	SIZE (D × L) mm (in)	COLOR	SHAPE
Tapping screw	a	5 × 12 (0.20 × 0.47)	-	 ACX01282AB
	b	5 × 16 (0.20 × 0.63)	Black	 ACX01283AB
	c	5 × 16 (0.20 × 0.63)	-	
	d	5 × 20 (0.20 × 0.79)	-	
	e	5 × 20 (0.20 × 0.79)	Black	
	f	5 × 16 (0.20 × 0.63)	Black	 ACX01284AB
	g	4 × 20 (0.16 × 0.79)	Black	 AC101783

NAME	SYMBOL	SIZE (D × L) mm (in)	COLOR	SHAPE
Washer assembled bolt	h	5 × 16 (0.20 × 0.63)	-	 ACX01285AB
Washer assembled bolt	i	5 × 20 (0.20 × 0.79)	Black	 ACX02229AB
	j	6 × 16 (0.24 × 0.63)	-	
	k	6 × 16 (0.24 × 0.63)	Black	
	l	6 × 20 (0.24 × 0.79)	-	 ACX00614AB

D: Thread diameter L: Effective thread length



ACX01622AD

REMOVAL STEPS

- FRONT FLOOR CONSOLE
(REFER TO P.52A-7.)
- 1. CENTER PANEL ASSEMBLY
- 2. CLOCK OR RV METER
- 3. RADIO AND TAPE PLAYER OR BOX
- 4. HEATER CONTROL ASSEMBLY
- 5. GLOVE BOX STOPPER
- 6. GLOVE BOX ASSEMBLY
- 7. GLOVE BOX LOCK
- 8. GLOVE BOX LIGHT SWITCH
HARNESS CONNECTOR

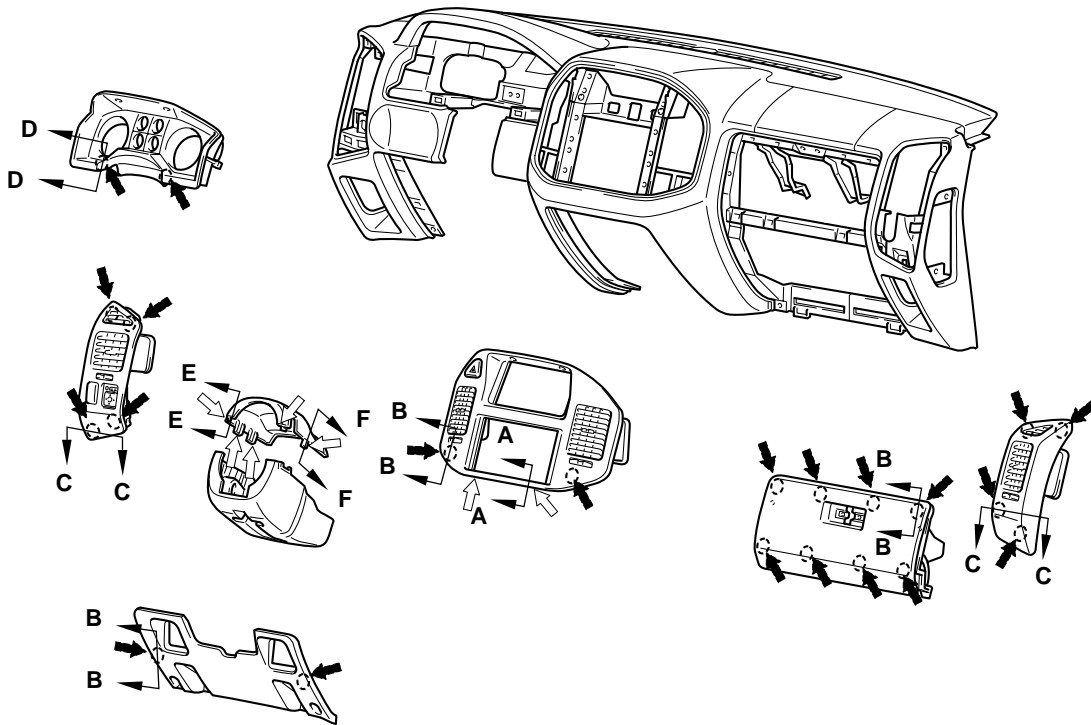
REMOVAL STEPS (Continued)

- 9. GLOVE BOX LIGHT SWITCH
- 10. GLOVE BOX LIGHT
- 11. UPPER GLOVE BOX STRIKER
- 12. UPPER GLOVE BOX ASSEMBLY
- 13. UPPER GLOVE BOX LID LOCK
- 14. FRONT PASSENGER'S SIDE AIR
BAG MODULE HARNESS
CONNECTOR
- 15. INSTRUMENT PANEL SIDE COVER
- 16. AIR OUTLET ASSEMBLY
- 17. METER BEZEL

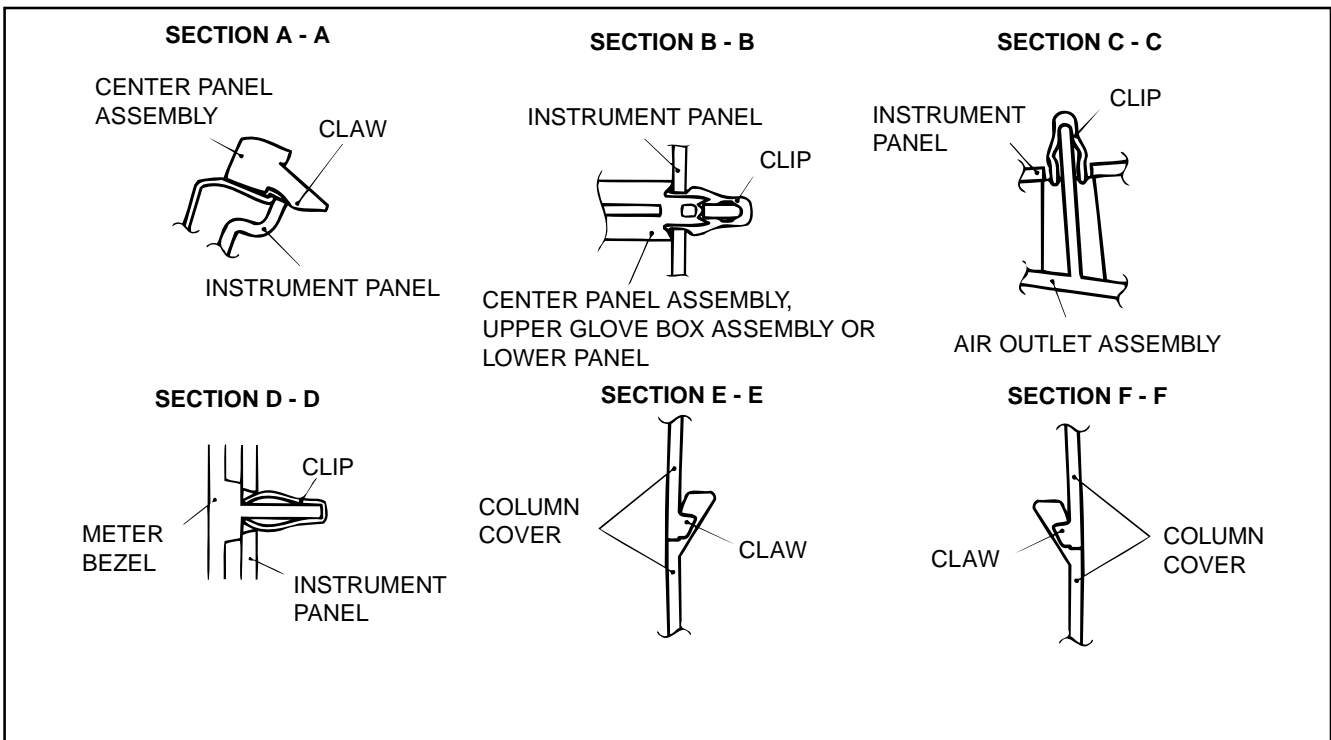
REMOVAL STEPS (Continued)

18. COMBINATION METER
 - HOOD OPENER LEVER (REFER TO GROUP 42, HOOD [P.42-5.](#))
 - FUEL LID OPENER LEVER (REFER TO GROUP 42, FUEL FILLER DOOR [P.42-8.](#))
19. LOWER PANEL
20. SWITCH PANEL
21. COLUMN COVER
22. STAY A
 - ASSIST GRIP (REFER TO [P.52A-8.](#))
 - FRONT PILLAR TRIM (REFER TO [P.52A-8.](#))
23. STAY B
24. CORNER LOWER PANEL
 - STEERING SHAFT MOUNTING BOLT (REFER TO GROUP 37, STEERING COLUMN AND SHAFT [P.37A-23.](#))
25. PHOTO SENSOR HARNESS CONNECTOR
26. INSTRUMENT PANEL ASSEMBLY

CLIP AND CLAW POSITIONS



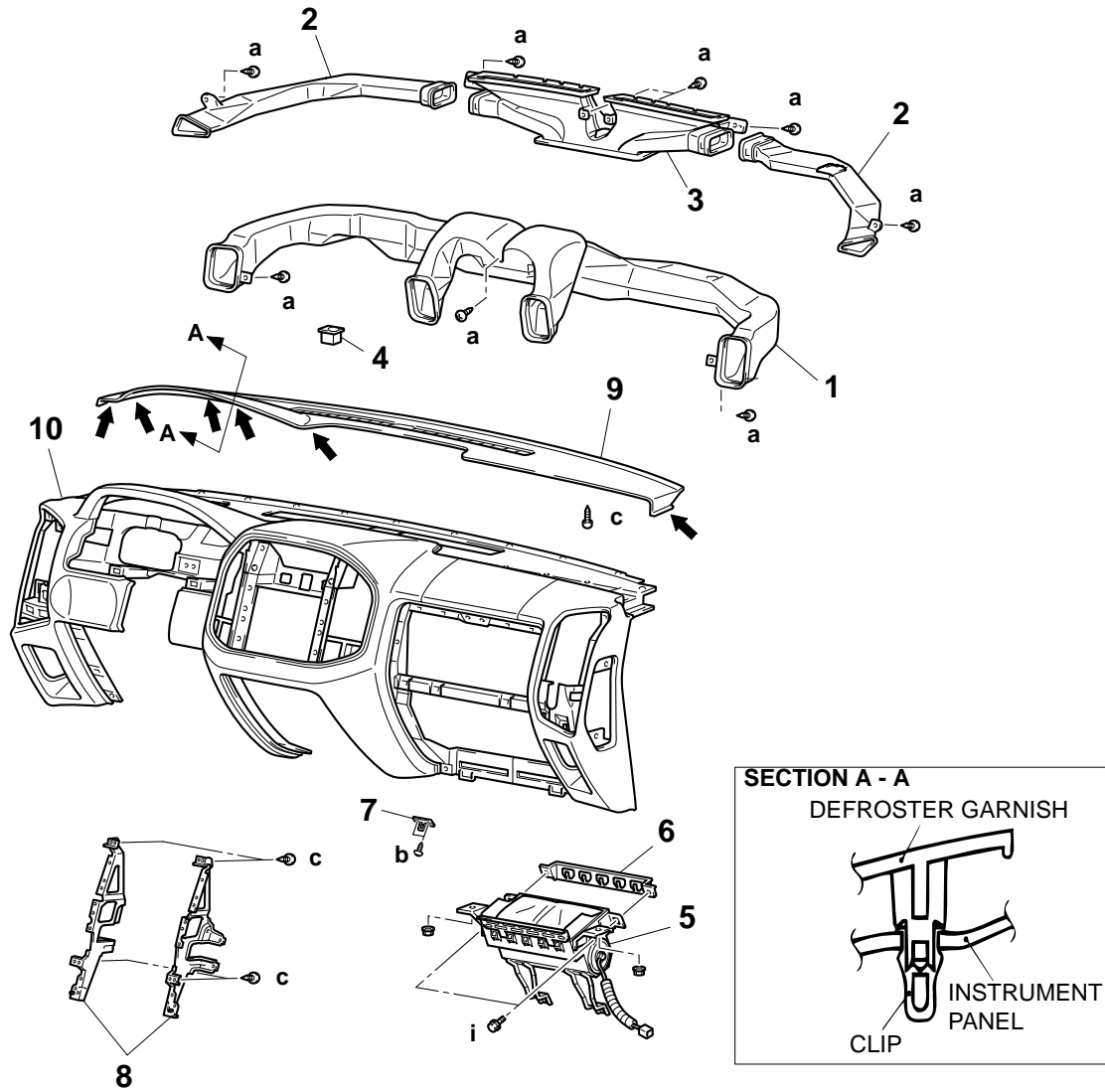
NOTE
 ← : Clip position
 ⇐ : Claw position



ACX01621AD

DISASSEMBLY AND ASSEMBLY

M1521001900213



NOTE

← : Clip position

DISASSEMBLY STEPS

1. DISTRIBUTION DUCT
2. SIDE DEFROSTER DUCT
3. CENTER DEFROSTER DUCT
4. PHOTO SENSOR
5. FRONT PASSENGER'S SIDE AIR BAG MODULE (REFER TO GROUP 52B, AIR BAG MODULES AND CLOCK SPRING P.52Ba-33).
6. AIR BAG SIDE PLATE

DISASSEMBLY STEPS

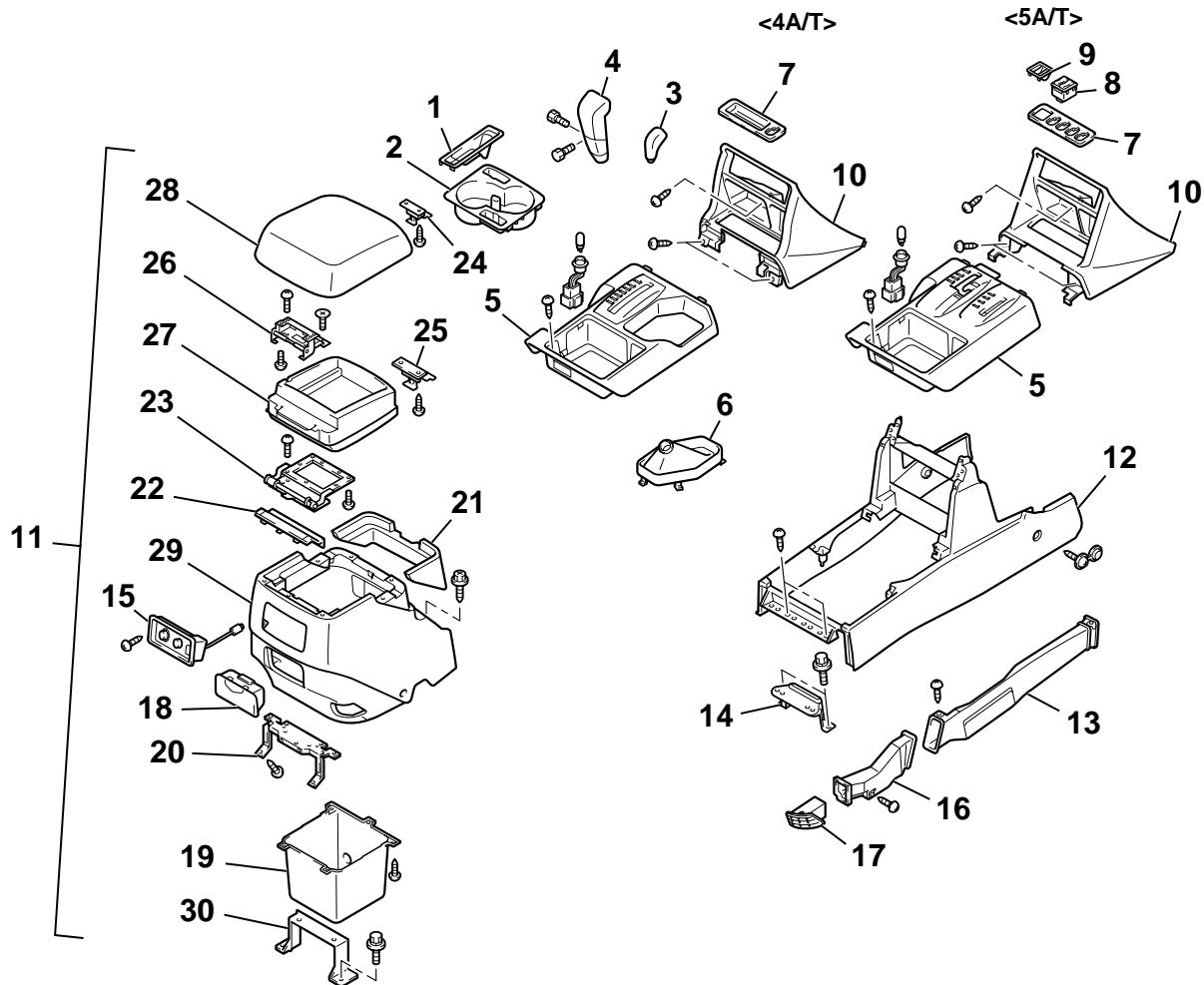
7. GLOVE BOX STRIKER
8. INSTRUMENT PANEL CENTER REINFORCEMENTS
9. DEFROSTER GARNISH
10. INSTRUMENT PANEL

ACX01481AF

FLOOR CONSOLE ASSEMBLY

REMOVAL AND INSTALLATION

M1521002200198



AC203826AB

REMOVAL STEPS

1. PARKING BRAKE LEVER COVER
2. CUP HOLDER
3. TRANSFER SHIFT KNOB
4. SELECTOR LEVER KNOB
5. INDICATOR PANEL
6. TRANSFER SHIFT COVER <4A/T>
7. SWITCH PANEL
8. HEATED SEAT SWITCH
<VEHICLES WITH HEATED SEAT>
9. COIN PLUG <VEHICLES WITHOUT
HEATED SEAT>
10. LOWER CENTER PANEL
11. REAR FLOOR CONSOLE
ASSEMBLY
 - PARKING BRAKE LEVER
MOUNTING BOLT (REFER TO
GROUP 36, PARKING BRAKES
[P.36-6.](#))
12. FRONT FLOOR CONSOLE
13. REAR HEATER DUCT A

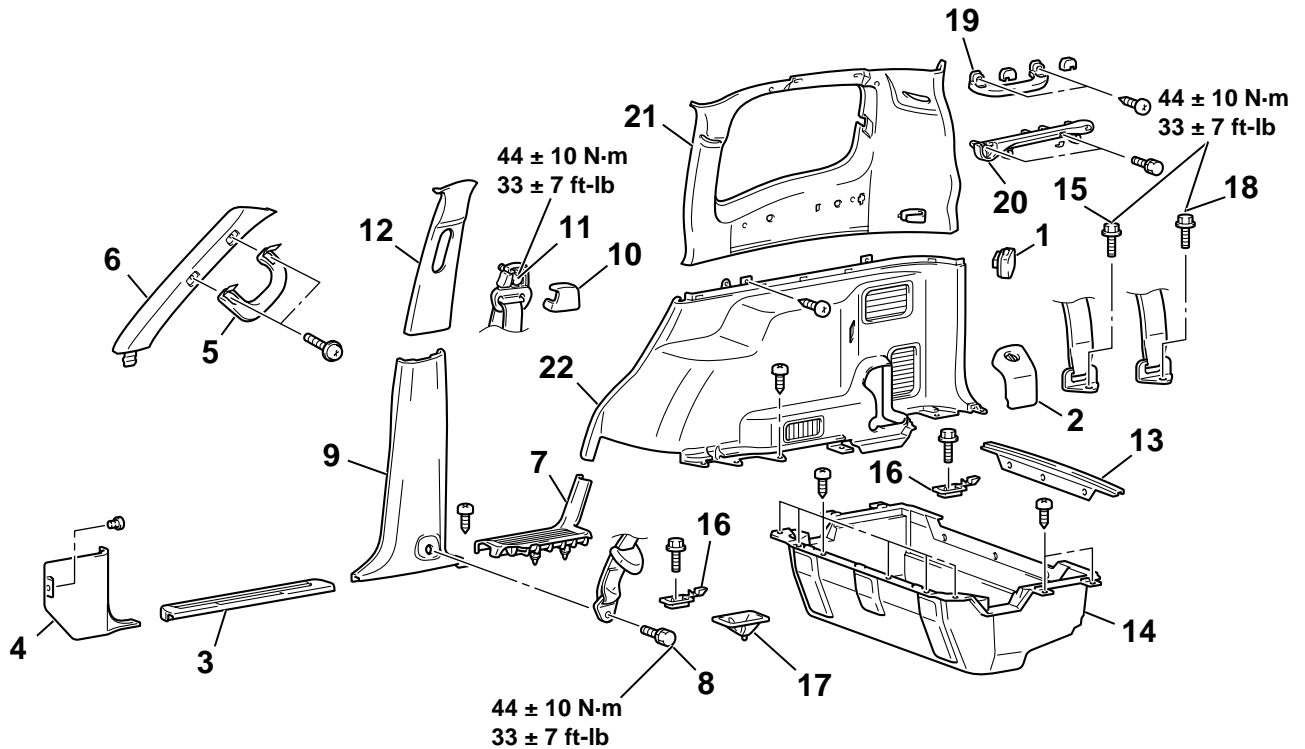
REMOVAL STEPS (Continued)

14. CONSOLE BRACKET A
15. REAR HEATER CONTROL
ASSEMBLY
16. REAR HEATER DUCT B
17. REAR HEATER DUCT NOZZLE
18. REAR FLOOR CONSOLE ASHTRAY
19. REAR FLOOR CONSOLE BOX
20. REAR FLOOR CONSOLE BRACKET
21. REAR FLOOR CONSOLE UPPER
COVER
22. REAR FLOOR CONSOLE HINGE
COVER
23. HINGE BRACKET
24. LOCK A
25. LOCK B
26. LID BRACKET
27. LID BOX
28. LID ASSEMBLY
29. REAR FLOOR CONSOLE
30. CONSOLE BRACKET B

TRIMS

REMOVAL AND INSTALLATION

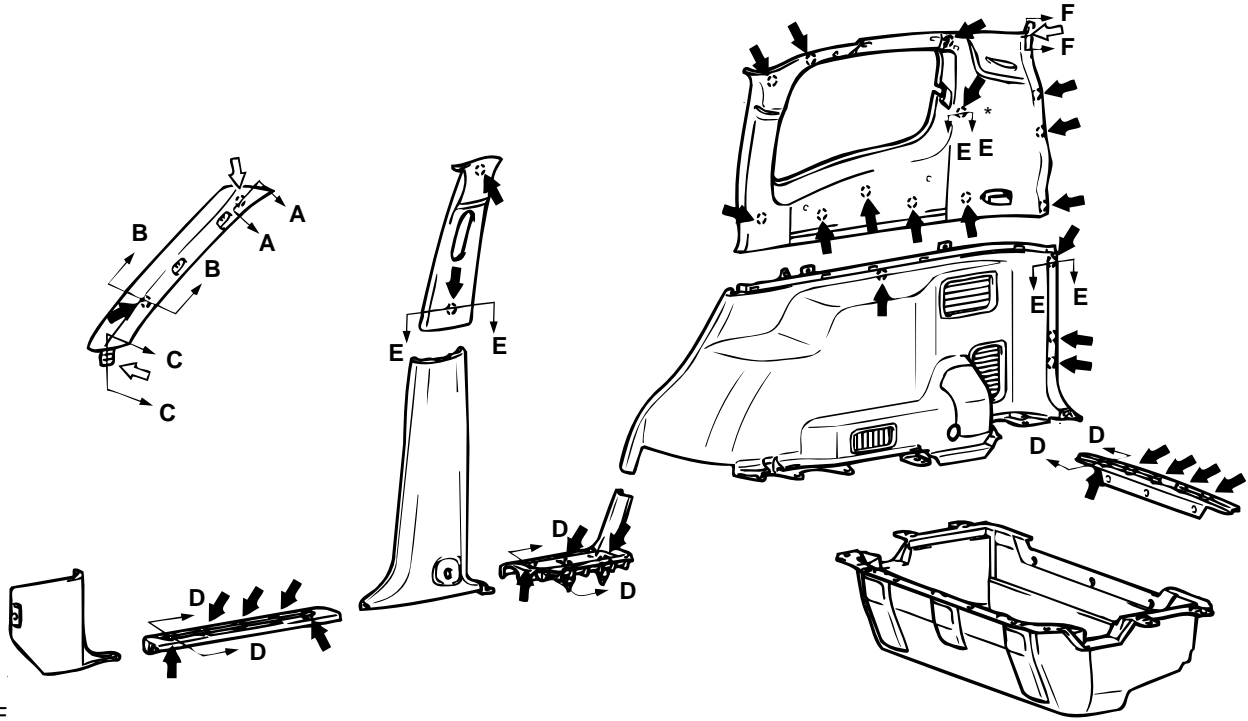
M1521001100284



AC006066AB

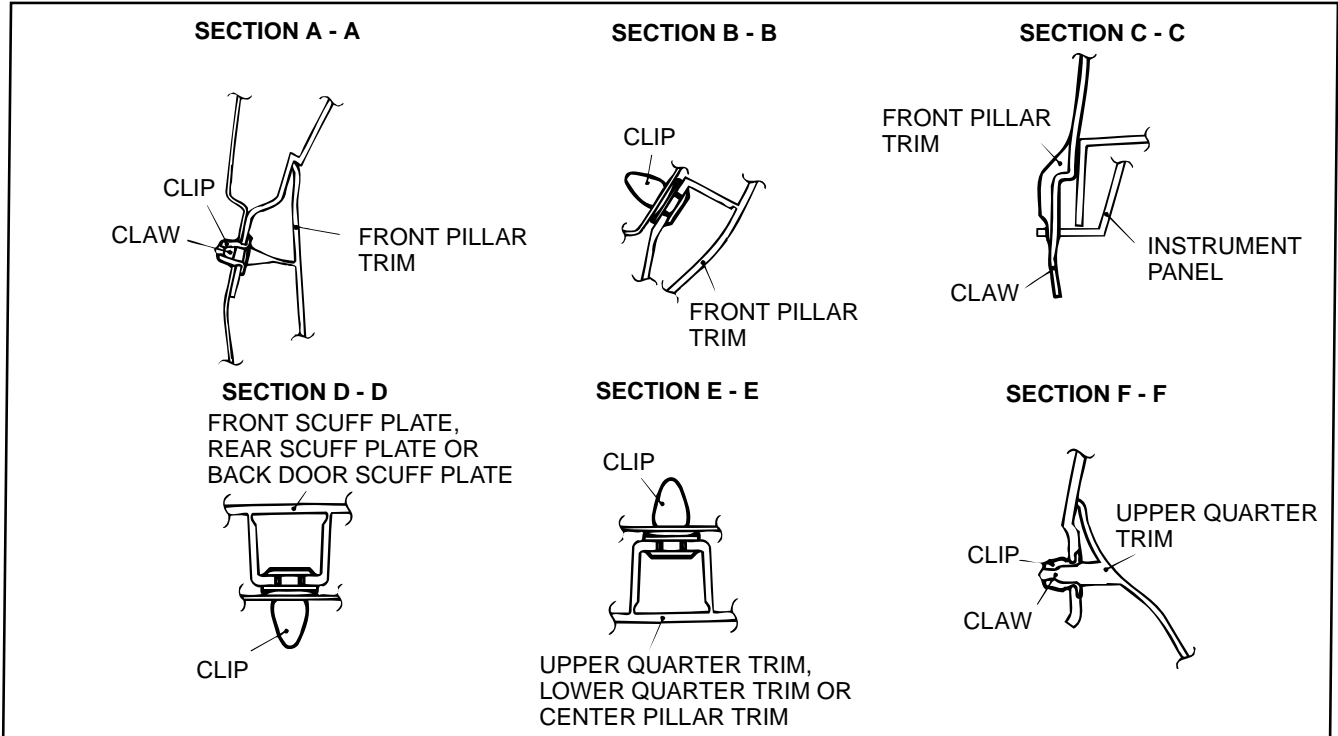
- | | |
|-------------------------------|---------------------------------|
| 1. ACCESSORY SOCKET | 11. FRONT SEAT BELT CONNECTION |
| 2. QUARTER TRIM COVER | 12. UPPER CENTER PILLAR TRIM |
| • THIRD SEAT ASSEMBLY | 13. BACK DOOR SCUFF PLATE |
| 3. FRONT SCUFF PLATE | 14. LUGGAGE FLOOR BOX |
| 4. COWL SIDE TRIM | 15. SECOND SEAT BELT CONNECTION |
| 5. ASSIST GRIP | 16. LUGGAGE HOOK |
| 6. FRONT PILLAR TRIM | 17. STRIKER COVER |
| 7. REAR SCUFF PLATE | 18. THIRD SEAT BELT CONNECTION |
| 8. FRONT SEAT BELT CONNECTION | 19. ASSIST GRIP |
| 9. LOWER CENTER PILLAR TRIM | 20. SHELF HOLDER ASSEMBLY |
| 10. SASH GUIDE COVER | 21. UPPER QUARTER TRIM |
| | 22. LOWER QUARTER TRIM |

CLIP AND CLAW POSITIONS



NOTE

- ◄ :Clip position (*: LH side only)
- ◄◁ :Claw position



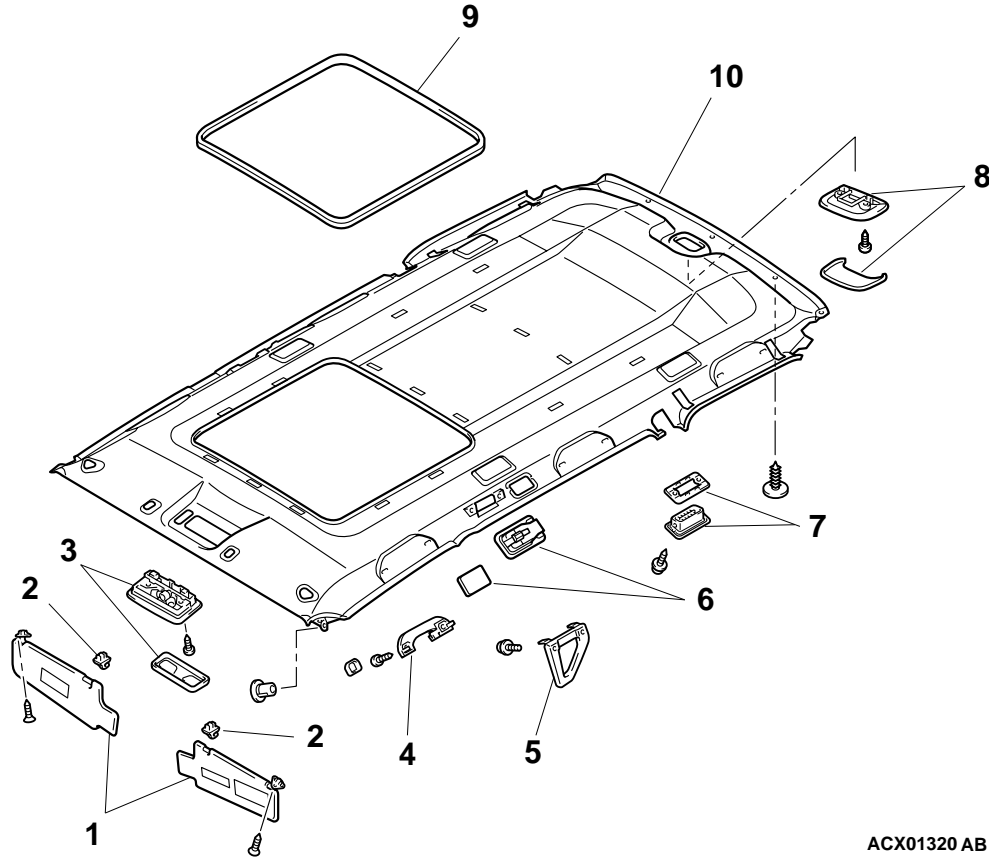
ACX02367AC

HEADLINING**REMOVAL AND INSTALLATION**

M1521001400230

Pre-removal and Post-installation Operation

- Front Pillar Trim, Upper Center Pillar Trim and Upper Quarter Trim Removal and Installation (Refer to P.52A-8.)



ACX01320 AB

REMOVAL STEPS

1. SUNVISOR ASSEMBLY
2. SUNVISOR HOLDER
3. DOME AND MAP LIGHT ASSEMBLY
4. ASSIST GRIP
5. GRIP

REMOVAL STEPS (Continued)

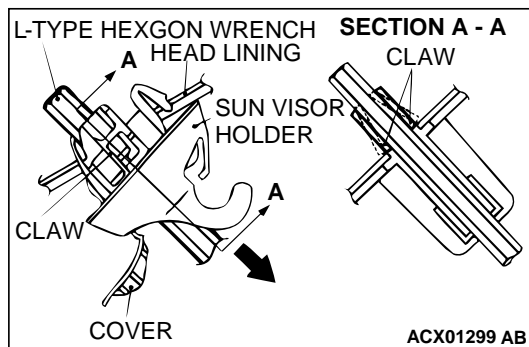
6. DOME LIGHT ASSEMBLY
7. AIR OUTLET ASSEMBLY
8. CARGO ROOM LIGHT ASSEMBLY
9. HEADLINING TRIM
10. HEADLINING

<<A>>

REMOVAL SERVICE POINTS

<<A>> SUNVISOR HOLDER REMOVAL

1. Remove the sunvisor holder cover, insert a 6 mm L-shaped hexagon wrench to disengage the sunvisor holder side claws.
2. Pull out the sunvisor into the direction shown to remove the sunvisor holder.

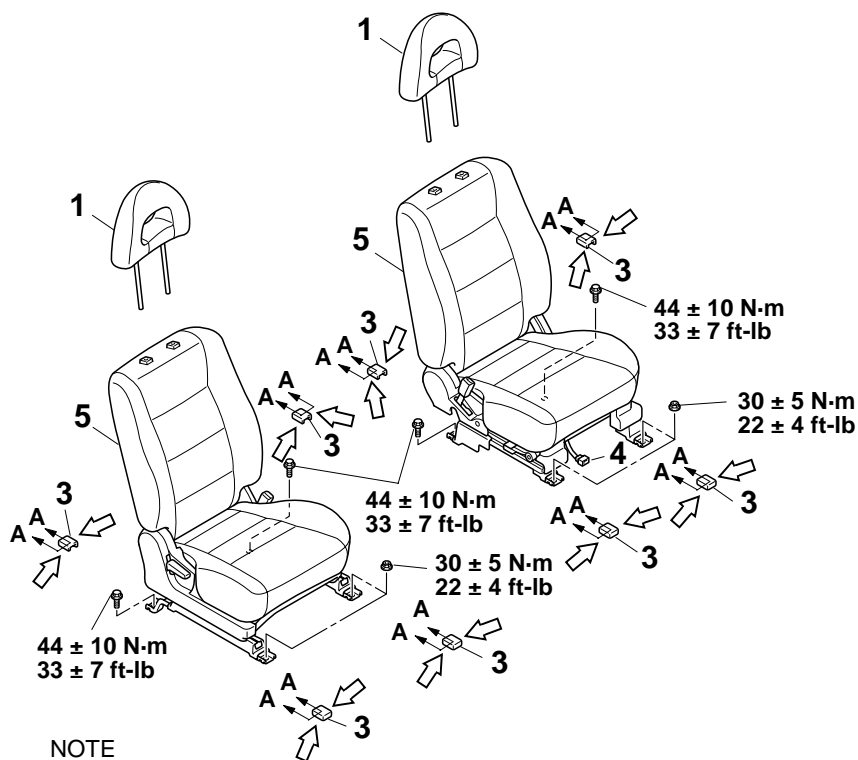


ACX01299 AB

FRONT SEAT ASSEMBLY

REMOVAL AND INSTALLATION

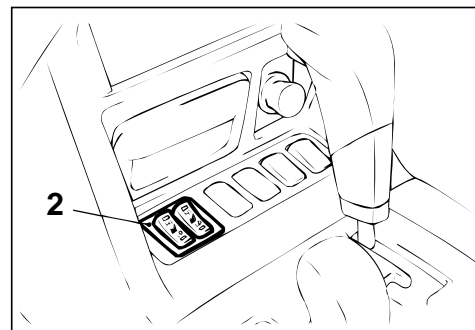
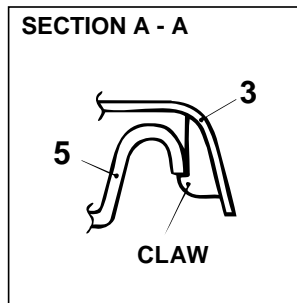
M1522001300214



NOTE

↔ : Claw position

1. HEAD RESTRAINT
2. HEATED SEAT SWITCH <VEHICLE WITH HEATED SEAT>



ACX00620AC

FRONT SEAT ASSEMBLY
REMOVAL STEPS

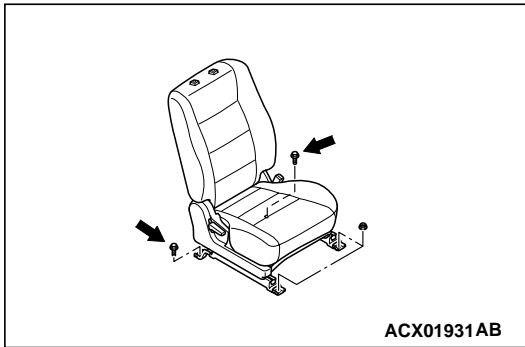
3. FRONT SEAT ANCHOR COVER
 4. HARNESS CONNECTOR
 5. FRONT SEAT ASSEMBLY
- >>A<<

INSTALLATION SERVICE POINTS

>>A<< FRONT SEAT ASSEMBLY INSTALLATION

Tighten the bolts shown while no weight is applied to the front seat cushion.

NOTE: First install all of the front seat assembly mounting nuts and bolts, and then tighten them to the specified torque.

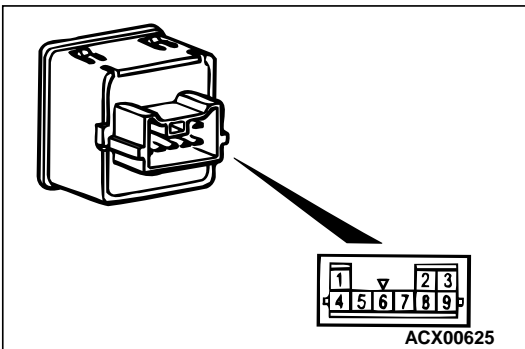


INSPECTION

M1522001400103

CONTINUITY TEST OF HEATED SEAT SWITCH

1. Check for continuity between terminals.



ITEMS	SWITCH POSITION	TESTER CONNECTION	SPECIFIED CONDITION
Driver's seat side	HI	4 - 5, 8 - 9	Less than 2 ohms
	OFF	4 - 5, 8 - 9, 5 - 9	Open circuit
	LO	5 - 9	Less than 2 ohms
Front passenger's seat side	HI	1 - 5, 3 - 8	Less than 2 ohms
	OFF	1 - 5, 3 - 8, 3 - 5	Open circuit
	LO	3 - 5	Less than 2 ohms

2. Check that the indicator is lighted at HI or LO when battery voltage is supplied to the terminal 5 and the terminal 8 is grounded.

3. Check that illumination is lighted when battery voltage is supplied to the terminals 2 and 6.

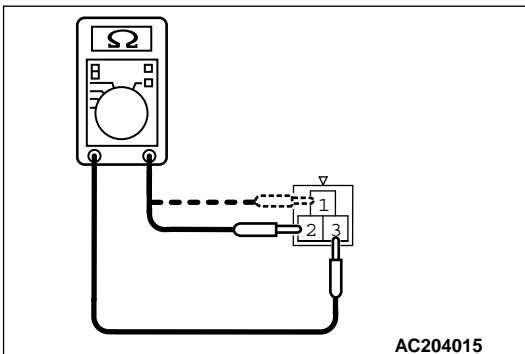
SEAT CUSHION HEATER CHECK

Measure the resistance between terminals.

Standard value: At room temperature 20 °C (68 °F)

Between terminals 2 and 3: Approximately 5.4 Ω ± 10%

Between terminals 1 and 3: 5.0 Ω ± 10%

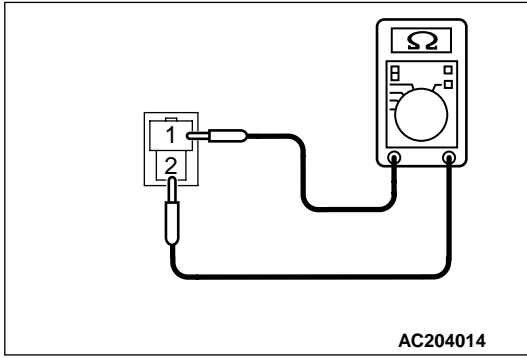


SEATBACK HEATER CHECK

Measure the resistance between terminals.

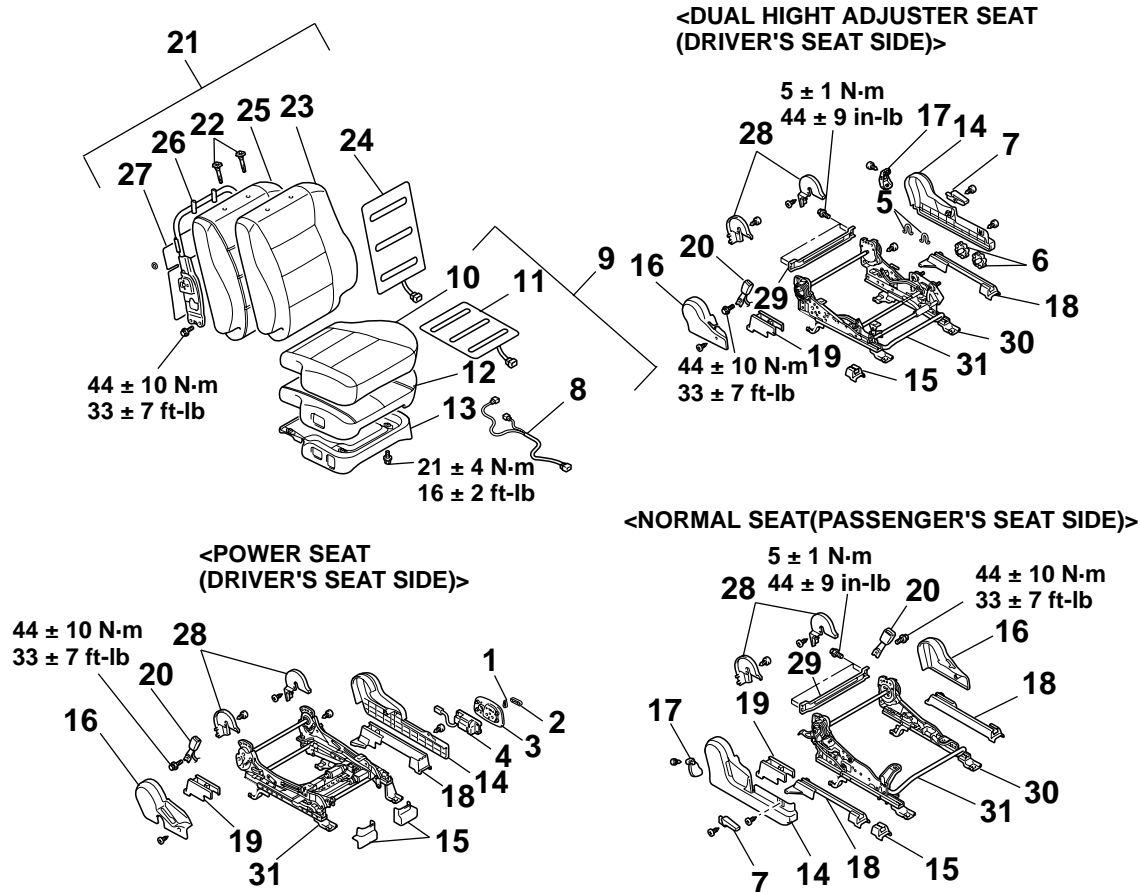
Standard value: At room temperature 20 °C (68 °F)

Approximately 6.0 Ω ± 10%



DISASSEMBLY AND ASSEMBLY

M1522001500285



ACX01416AB

DISASSEMBLY STEPS

1. RECLINING ADJUSTER KNOB
<VEHICLES WITH POWER SEATS>
2. SLIDE ADJUSTER KNOB
<VEHICLES WITH POWER SEATS>
3. POWER SEAT SWITCH GARNISH
<VEHICLES WITH POWER SEATS>
4. POWER SEAT SWITCH <VEHICLES WITH POWER SEATS>

DISASSEMBLY STEPS (Continued)

5. CLIP <VEHICLES WITH DUAL HEIGHT ADJUSTER SEATS>
6. HEIGHT ADJUSTER KNOB
<VEHICLES WITH DUAL HIGH ADJUSTER SEATS>
7. RECLINING ADJUSTER LEVER
<VEHICLES WITH DUAL HEIGHT ADJUSTER SEATS OR NORMAL SEATS>

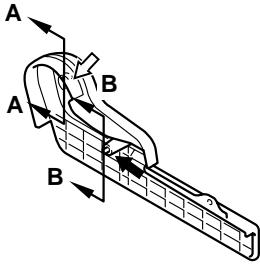
DISASSEMBLY STEPS (Continued)

8. HARNESS CLAMP
9. FRONT SEAT CUSHION ASSEMBLY
10. FRONT SEAT CUSHION COVER
11. SEAT CUSHION HEATER
<VEHICLES WITH HEATED SEATS>
12. FRONT SEAT CUSHION PAD
13. FRONT SEAT CUSHION FRAME
14. SIDE SHIELD COVER
15. FRONT RAIL COVER
16. HINGE COVER
17. REAR RAIL COVER <VEHICLES
WITH DUAL HEIGHT ADJUSTER
SEATS OR NORMAL SEATS>
18. SEAT SLIDE ADJUSTER SIDE
COVER
19. SEAT SLIDE ADJUSTER INNER
SIDE COVER
20. INNER SEAT BELT
21. FRONT SEATBACK ASSEMBLY
22. HEAD RESTRAINT GUIDE
23. FRONT SEATBACK COVER
24. FRONT SEATBACK HEATER
<VEHICLES WITH HEATED SEATS>
25. FRONT SEATBACK PAD
26. FRONT SEATBACK FRAME
<VEHICLES WITHOUT SIDE AIR
BAG>
27. FRONT SEATBACK BOARD
28. RECLINING ADJUSTER LOWER
COVER
29. FRONT SEAT FRAME <VEHICLES
WITH DUAL HEIGHT ADJUSTER
SEATS OR NORMAL SEATS>
30. SEAT SLIDE ADJUSTER
31. SEAT SLIDE ADJUSTER LEVER
<VEHICLES WITH DUAL HEIGHT
ADJUSTER SEATS OR NORMAL
SEATS>

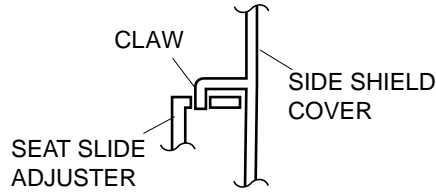
<<A>>

CLIP AND CLAW POSITIONS

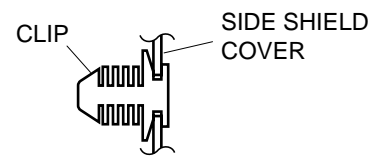
<SIDE SHIELD COVER>



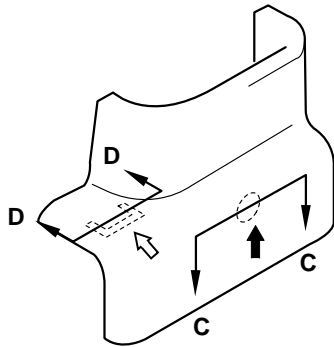
SECTION A - A



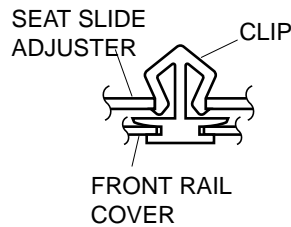
SECTION B - B



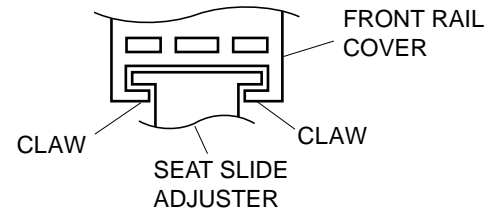
<FRONT RAIL COVER>



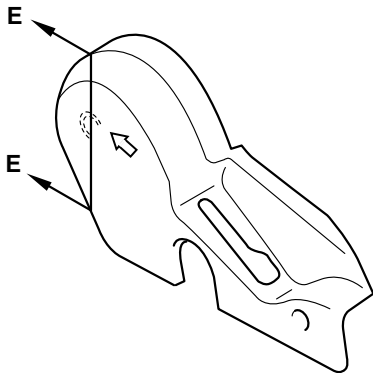
SECTION C - C



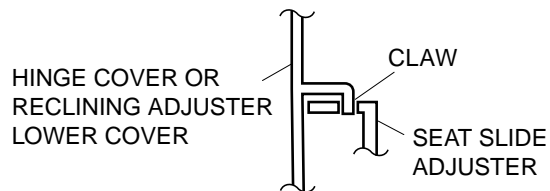
SECTION D - D



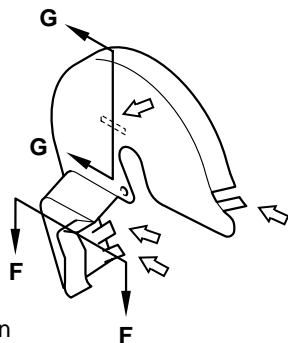
<HINGE COVER>



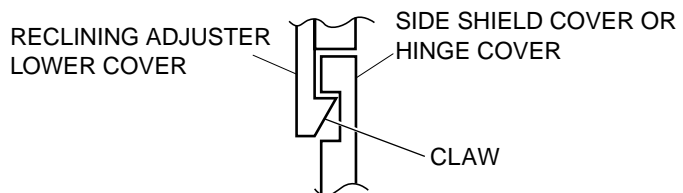
SECTION E - E, G - G



<RECLINING ADJUSTER LOWER COVER>



SECTION F - F



NOTE
 ← Clip position
 ⇨ Claw position

ACX01417AC

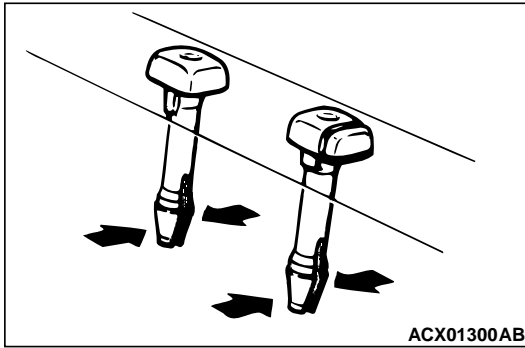
REMOVAL SERVICE POINT

<<A>>HEAD RESTRAINT GUIDE REMOVAL

INSPECTION

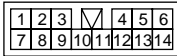
M1522001400095

Power seat manual switch continuity check



ACX01300AB

POWER SEAT SWITCH CONNECTOR



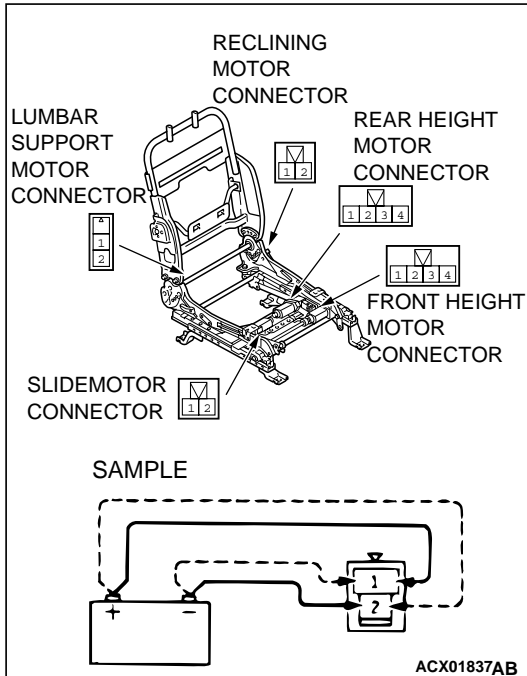
LUMBAR SUPPORT SWITCH CONNECTOR



AC203971AC

SWITCH POSITION		TESTER CONNECTION	SPECIFIED CONDITION
Reclining switch	FRONT	4-14, 3-13	Less than 2 ohms
	REAR	4-13, 3-14	Less than 2 ohms
Slide switch	FRONT	7-14, 8-13	Less than 2 ohms
	REAR	7-13, 8-14	Less than 2 ohms
Front height switch	UP	5-14, 6-13	Less than 2 ohms
	DOWN	5-13, 6-14	Less than 2 ohms
Rear height switch	UP	2-14, 1-13	Less than 2 ohms
	DOWN	2-13, 1-14	Less than 2 ohms
Lumbar support switch	FRONT	4-5, 3-6	Less than 2 ohms
	REAR	4-6, 3-5	Less than 2 ohms

Operation check of power seat motor

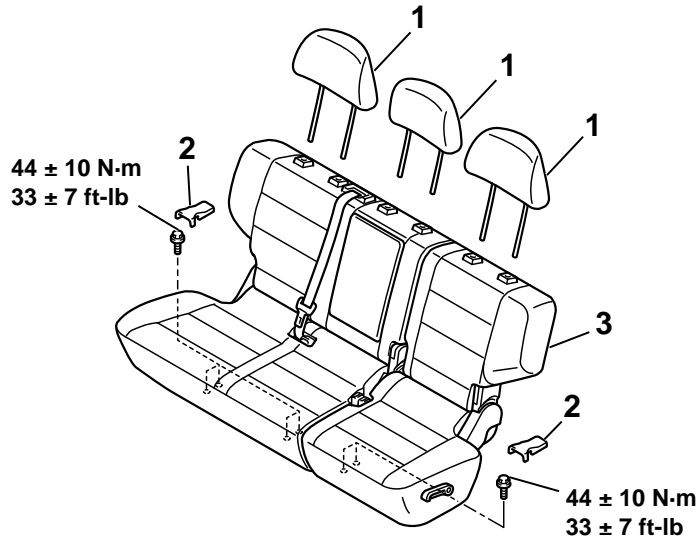


1. Disconnect the connector of each motor.
2. Check that when the battery is directly connected to the motor terminal, the motor turns smoothly and each adjusting mechanism operates as stated below for each motor.
 - (1) Connect the battery power supply to the terminal 1 and ground the terminal 2 for the front height down side, rear slide side and the rear lumbar support side.
 - (2) Connect the battery power supply to the terminal 2 and ground the terminal 1 for the front height up side, front slide side and front lumbar support side.
 - (3) Connect the battery power supply to the terminal 3 and ground the terminal 4 for the rear height down side and connect the battery power supply to the terminal 4 and ground the terminal 3 for the rear height up side.
 - (4) Connect the battery power supply to the terminal 2 and ground the terminal 1 for the rear reclining side and connect the battery power supply to the terminal 1 and ground the terminal 2 for the front reclining side.
3. If abnormality was found, check the power seat adjuster assembly.

REAR SEAT ASSEMBLY

REMOVAL AND INSTALLATION

M1522001800190



AC006064AB

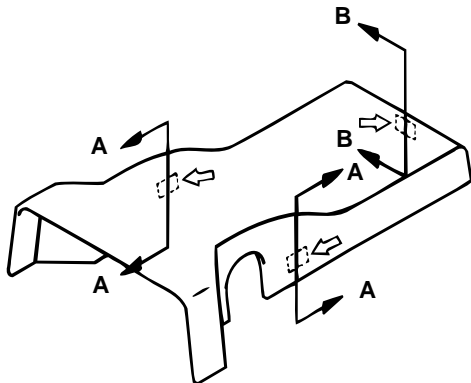
1. HEAD RESTRAINT

REMOVAL STEPS

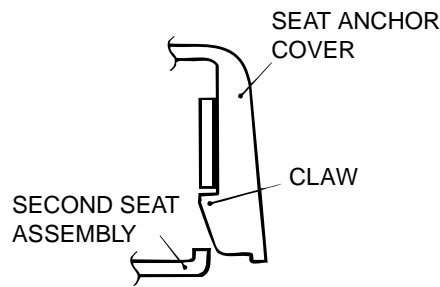
2. SEAT ANCHOR COVER
3. SECOND SEAT ASSEMBLY

CLAW POSITIONS

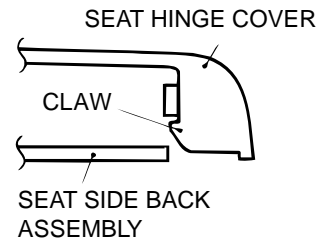
<SEAT ANCHOR COVER>



SECTION A - A



SECTION B - B



NOTE

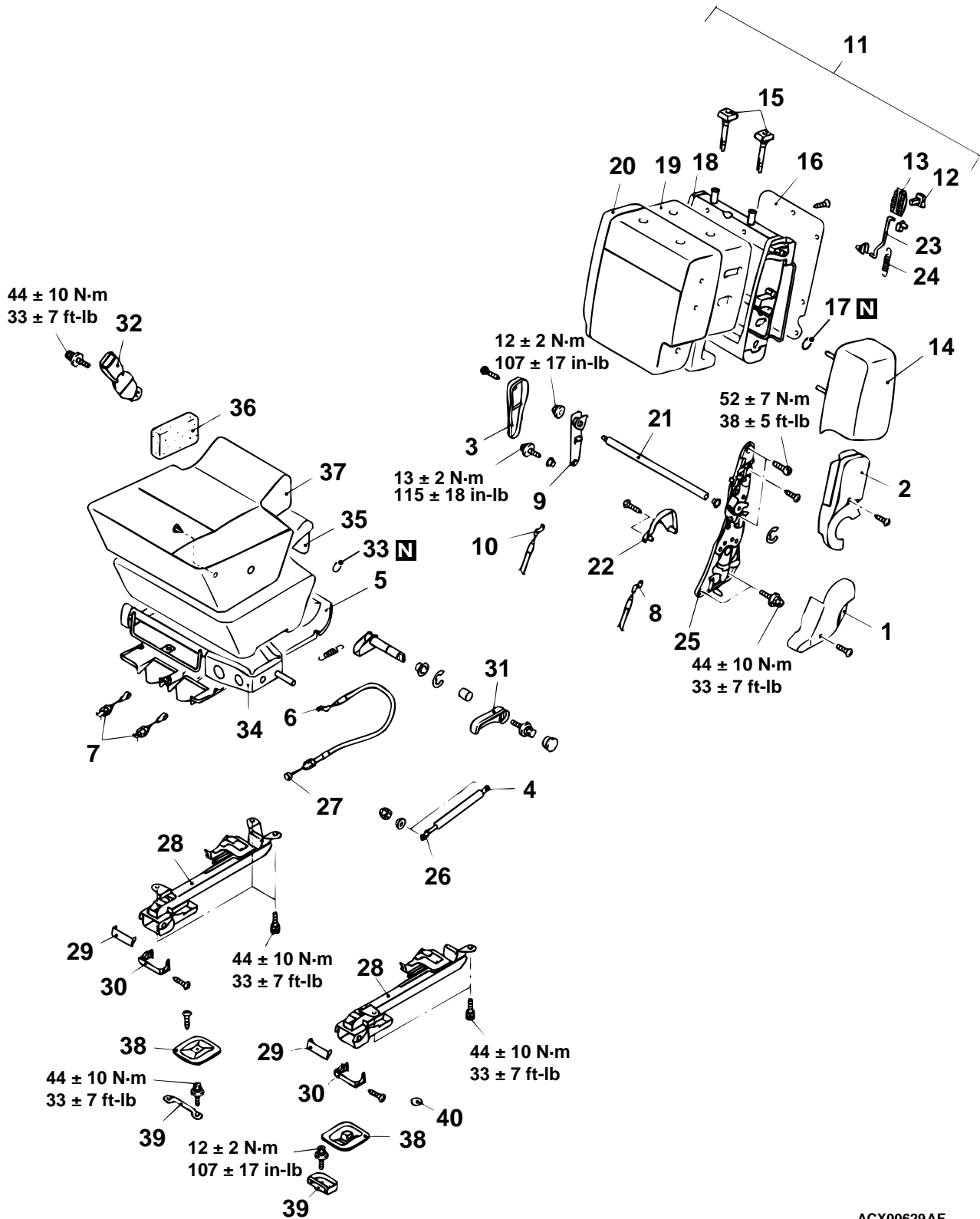
↔ : Claw position

AC101440AB

DISASSEMBLY AND ASSEMBLY

M1522002000249

<LH SIDE>



ACX00629AF

DISASSEMBLY STEPS

1. LOWER RECLINING ADJUSTER COVER
2. CENTER RECLINING ADJUSTER COVER
3. FREE HINGE COVER
4. GAS SPRING CONNECTION
5. SECOND SEAT CUSHION UNDER COVER
6. RECLINING CABLE CONNECTION
7. CATCH CABLE A AND B CONNECTION
8. CATCH CABLE A
9. HINGE BRACKET
10. CATCH CABLE B
11. SECOND SEATBACK ASSEMBLY
12. FOLDING LEVER KNOB
13. FOLDING KNOB GARNISH
14. SECOND SEAT SIDE BACK ASSEMBLY
15. HEAD RESTRAINT GUIDE
16. SECOND SEATBACK BOARD
17. HOG RING
18. SECOND SEATBACK FRAME

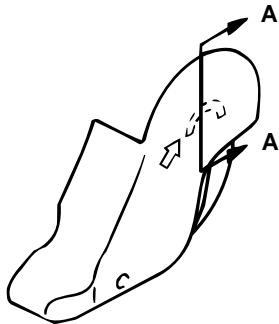
DISASSEMBLY STEPS

19. SECOND SEATBACK PAD
20. SECOND SEATBACK COVER
21. SHAFT
22. RECLINING ADJUSTER BACK COVER
23. ROD
24. SPRING
25. RECLINING ADJUSTER
26. GAS SPRING
27. RECLINING CABLE
28. SECOND SEAT CATCH ASSEMBLY
29. UPPER FOOT COVER
30. LOWER FOOT COVER
31. RECLINING KNOB
32. INNER SEAT BELT
33. HOG RING
34. SECOND SEAT CUSHION FRAME
35. SECOND SEAT CUSHION PAD
36. SUPPORT PAD
37. SECOND SEAT CUSHION COVER
38. STRIKER COVER
39. STRIKER
40. PLUG

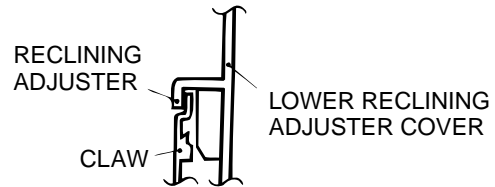
<<A>>

CLAW POSITIONS

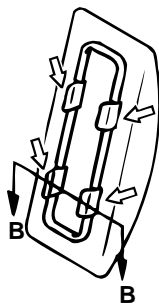
<LOWER RECLINING ADJUSTER COVER>



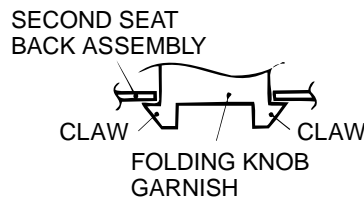
SECTION A - A



<FOLDING KNOB GARNISH>



SECTION B - B

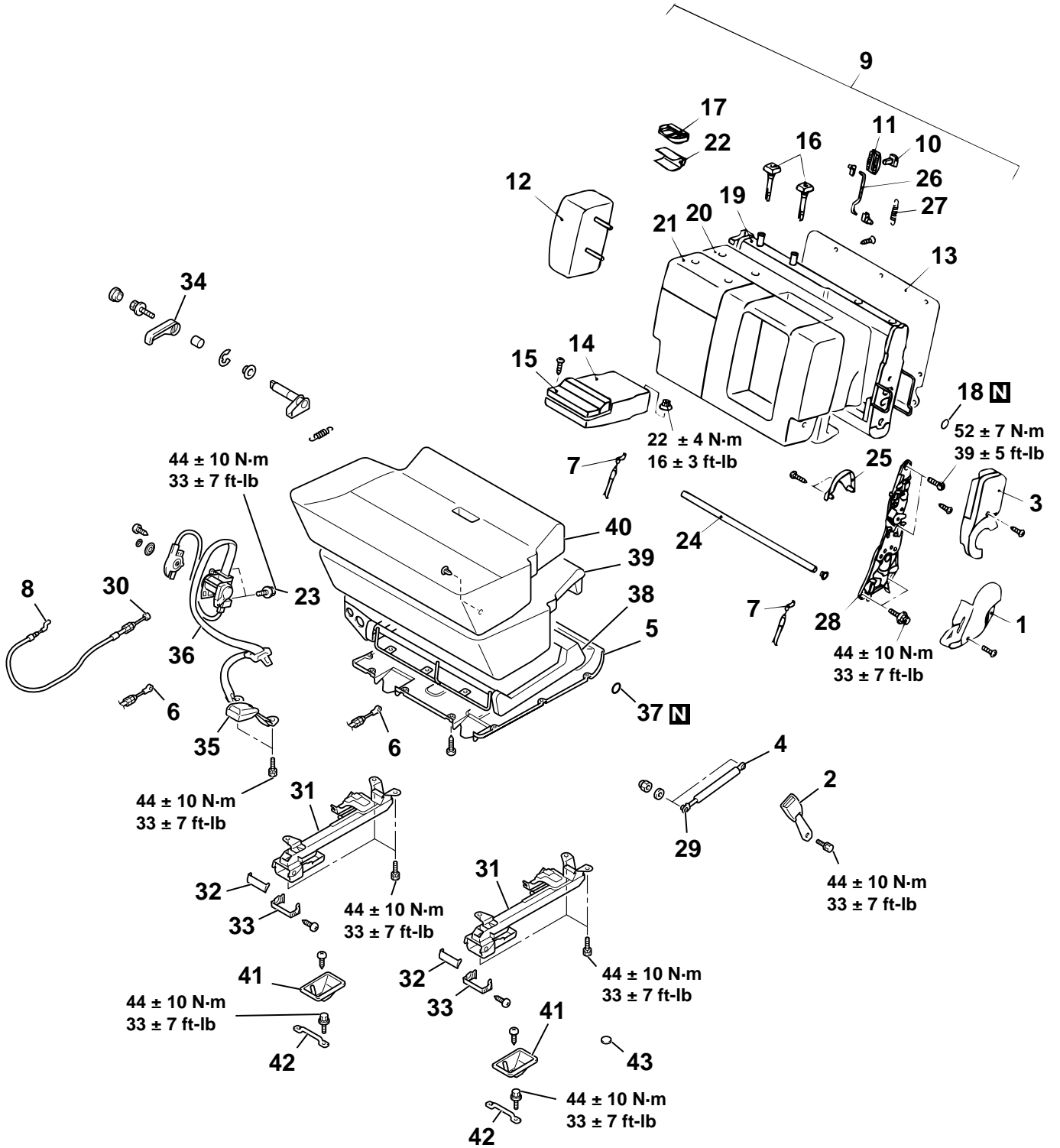


NOTE

↔ : Claw position

ACX00631 AB

<RH SIDE>



AC006067AC

DISASSEMBLY STEPS

1. LOWER RECLINING ADJUSTER COVER
2. INNER SEAT BELT
3. CENTER RECLINING ADJUSTER COVER
4. GAS SPRING CONNECTION
5. SECOND SEAT CUSHION UNDER COVER
6. CATCH CABLE A CONNECTION
7. CATCH CABLE A
8. RECLINING CABLE CONNECTION
9. SECOND SEAT BACK ASSEMBLY
10. FOLDING LEVER KNOB
11. FOLDING KNOB GARNISH
12. SECOND SEAT SIDE BACK ASSEMBLY
13. SECOND SEAT BACK BOARD
14. ARMREST
15. CUP HOLDER
16. HEAD RESTRAINT GUIDE
17. SASH ANCHOR GARNISH
18. HOG RING
19. SECOND SEATBACK FRAME
20. SECOND SEATBACK PAD
21. SECOND SEATBACK COVER

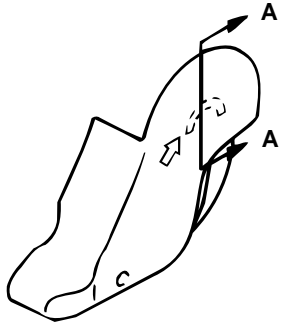
DISASSEMBLY STEPS

22. SEAT BELT PROTECTOR
23. CENTER SEAT BELT CONNECTION
24. SHAFT
25. RECLINING ADJUSTER BACK COVER
26. ROD
27. SPRING
28. RECLINING ADJUSTER
29. GAS SPRING
30. RECLINING CABLE
31. SECOND SEAT CATCH ASSEMBLY
32. UPPER FOOT COVER
33. LOWER FOOT COVER
34. RECLINING KNOB
35. INNER SEAT BELT
36. CENTER SEAT BELT
37. HOG RING
38. SECOND SEAT CUSHION FRAME
39. SECOND SEAT CUSHION PAD
40. SECOND SEAT CUSHION COVER
41. STRIKER COVER
42. STRIKER
43. PLUG

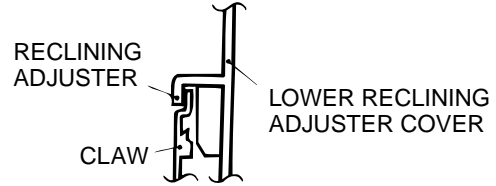
<<A>>

CLAW POSITIONS

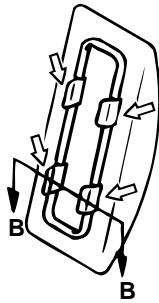
<LOWER RECLINING
ADJUSTER COVER>



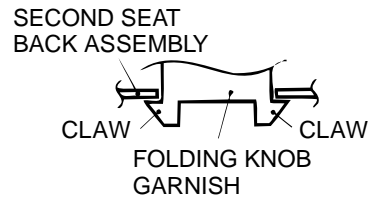
SECTION A - A



<FOLDING KNOB GARNISH>



SECTION B - B

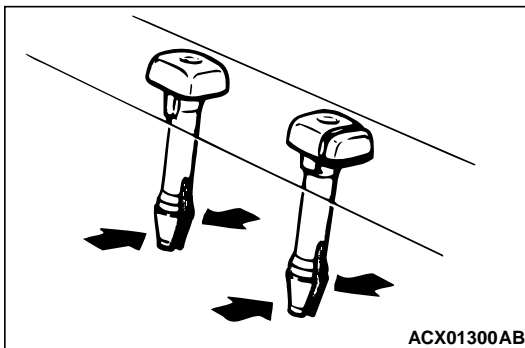


NOTE
⇐ : Claw position

ACX00631 AB

REMOVAL SERVICE POINTS

<<A>>HEAD RESTRAINT GUIDE REMOVAL

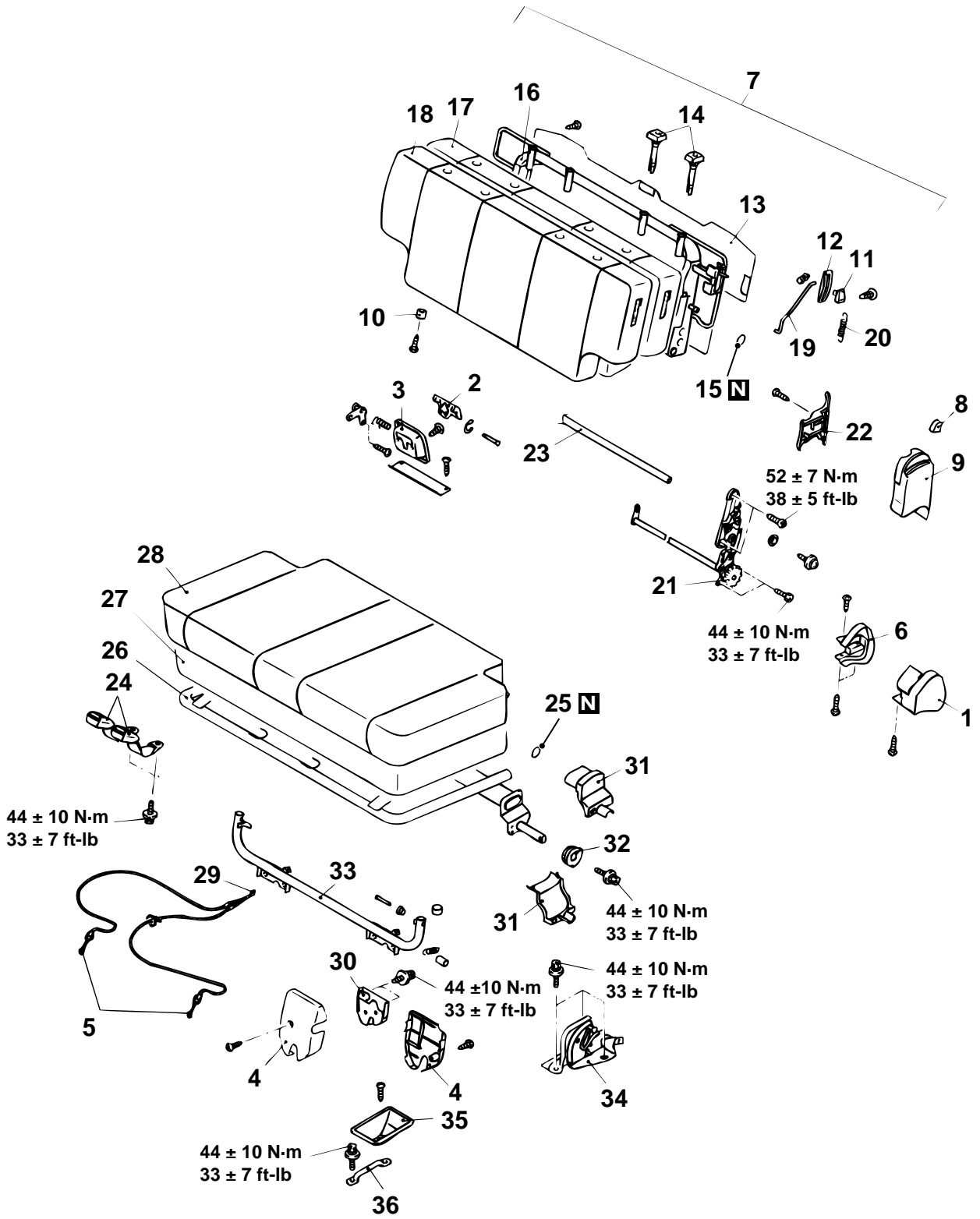


ACX01300AB

THIRD SEAT ASSEMBLY

DISASSEMBLY AND ASSEMBLY

M1522003000048



ACX00632AD

DISASSEMBLY STEPS

1. OUTER RECLINING ADJUSTER COVER
2. CATCH RELEASE KNOB
3. CATCH RELEASE KNOB GARNISH
4. LATCH COVER
5. CATCH CABLE CONNECTION
6. INNER RECLINING ADJUSTER COVER
7. THIRD SEATBACK ASSEMBLY
8. RECLINING KNOB
9. RECLINING ADJUSTER COVER
10. DAMPER
11. FOLDING LEVER KNOB
12. FOLDING KNOB GARNISH
13. THIRD SEATBACK BOARD
14. HEAD RESTRAINT GUIDE
15. HOG RING
16. THIRD SEATBACK FRAME
17. THIRD SEATBACK PAD

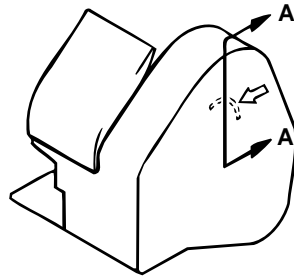
DISASSEMBLY STEPS

18. THIRD SEATBACK COVER
19. ROD
20. SPRING
21. RECLINING ADJUSTER
22. INNER RECLINING ADJUSTER COVER
23. SHAFT
24. INNER SEAT BELT
25. HOG RING
26. THIRD SEAT CUSHION FRAME
27. THIRD SEAT CUSHION PAD
28. THIRD SEAT CUSHION COVER
29. CATCH CABLE
30. THIRD SEAT LATCH
31. ARM COVER
32. CAM
33. THIRD SEAT LEG FRAME
34. CATCH ASSEMBLY
35. STRIKER COVER
36. STRIKER

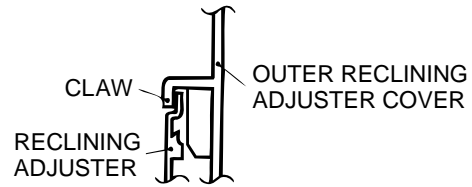
<<A>>

CLAW POSITIONS

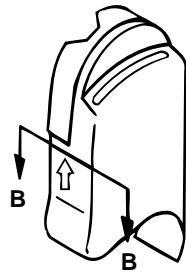
<OUTER RECLINING ADJUSTER COVER>



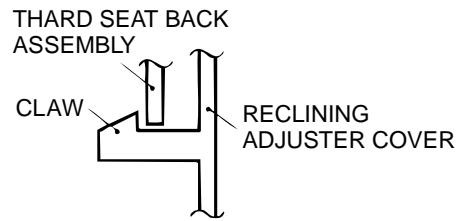
SECTION A - A



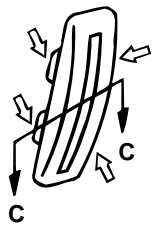
<RECLINING ADJUSTER COVER>



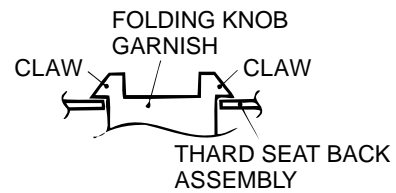
SECTION B - B



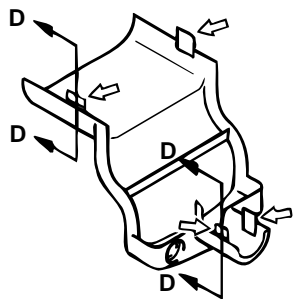
<FOLDING KNOB GARNISH>



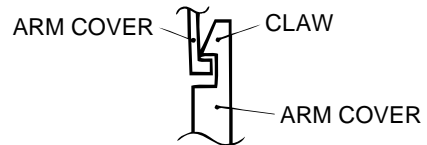
SECTION C - C



<ARM COVER>



SECTION D - D

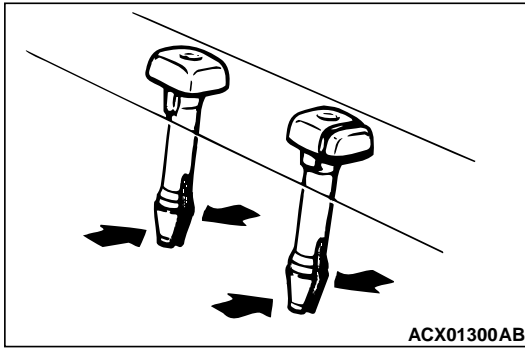


NOTE
↔ :Claw position

ACX00633 AB

REMOVAL SERVICE POINTS

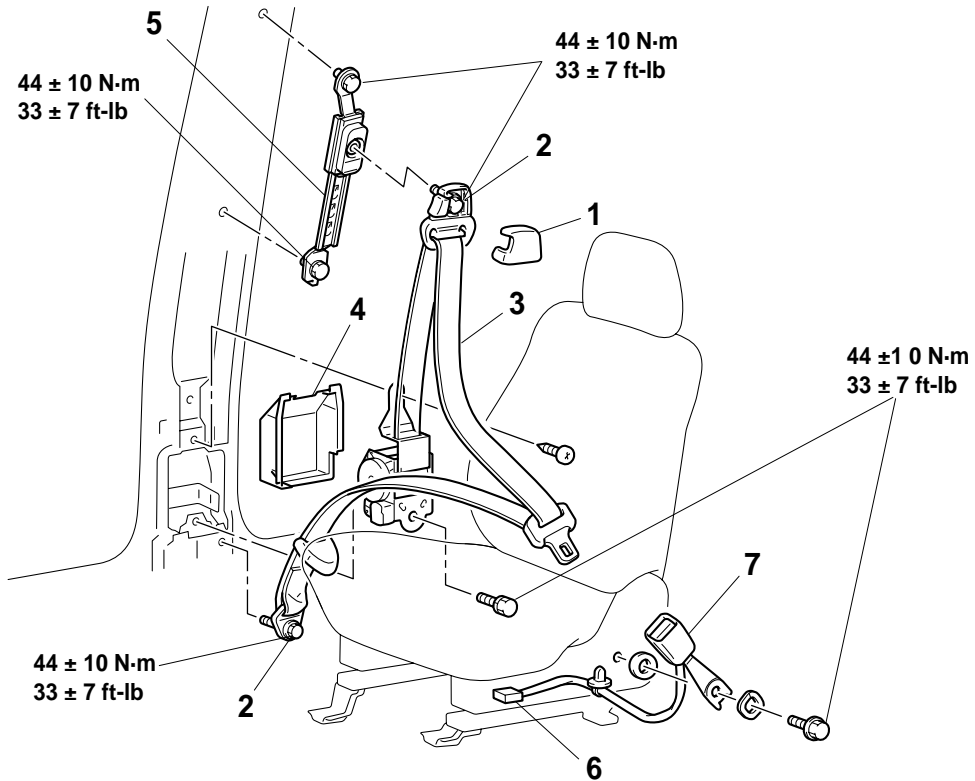
<<A>>HEAD RESTRAINT GUIDE REMOVAL



FRONT SEAT BELT

REMOVAL AND INSTALLATION

M1523001300239



ACX00634AE

OUTER SEAT BELT REMOVAL
STEPS

1. SASH GUIDE COVER
2. OUTER SEAT BELT CONNECTION
 - FRONT SCUFF PLATE, REAR SCUFF PLATE, LOWER CENTER PILLAR TRIM AND UPPER CENTER PILLAR TRIM (REFER TO P.52A-8.)
3. OUTER SEAT BELT
4. FRONT NOISE PROTECTOR
5. ADJUSTABLE SEAT BELT ANCHOR

INNER SEAT BELT REMOVAL
STEPS

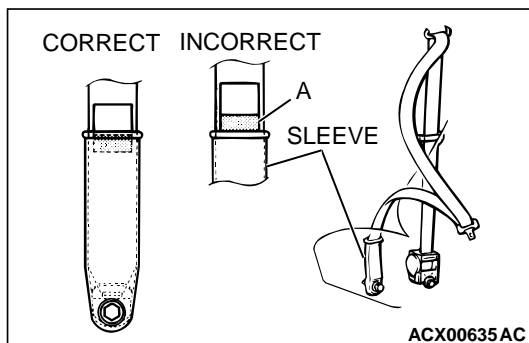
- FRONT SEAT ASSEMBLY (REFER TO P.52A-11.)
 - HINGE COVER (REFER TO P.52A-13.)
6. SEAT BELT SWITCH HARNESS CONNECTOR (DRIVER'S SIDE)
 7. INNER SEAT BELT

INSPECTION

M1523001400270

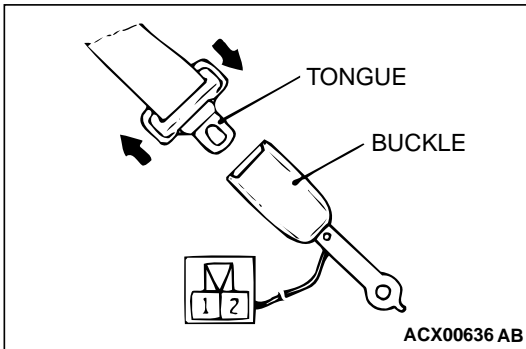
OUTER SEAT BELT CHECK

Check that the A section (red) of the label attached to the outer seat belt is not exposed from the outer seat belt sleeve. If it is exposed, replace the outer seat belt.



ACX00635AC

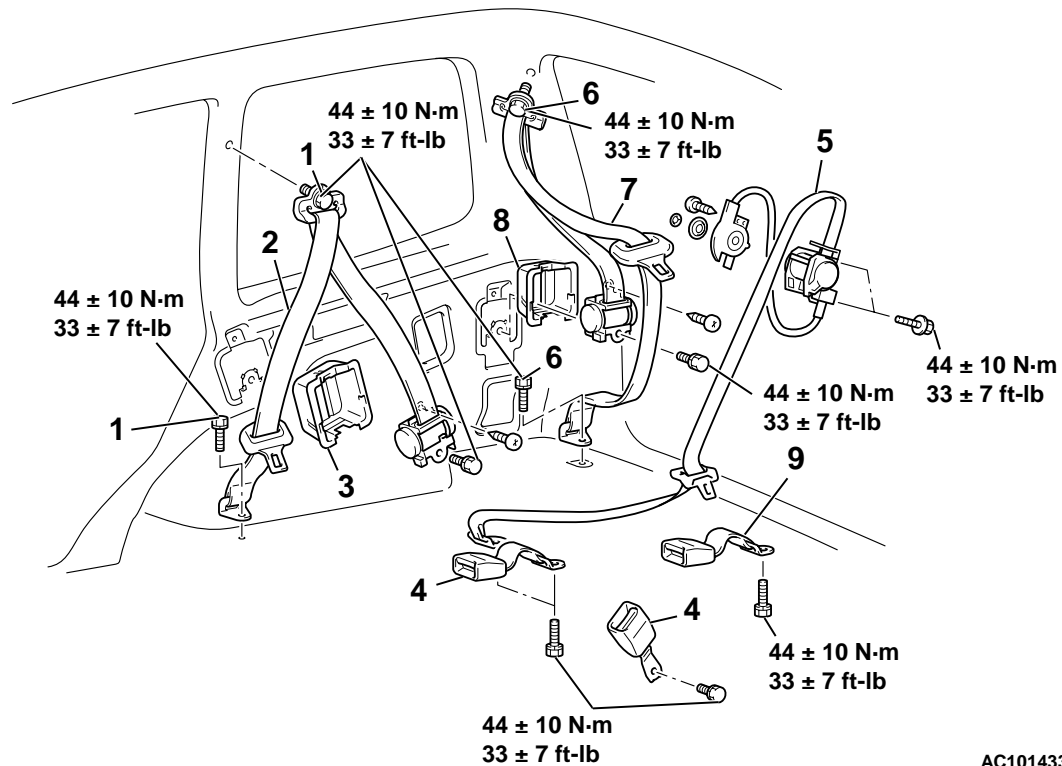
**SEAT BELT BUCKLE SWITCH CONTINUITY
CHECK**



ITEMS	TESTER CONNECTION	SPECIFIED CONDITION
Fastened seat belt	1 - 2	Open circuit
Unfastened seat belt	1 - 2	Less than 2 ohms

REAR SEAT BELT**REMOVAL AND INSTALLATION**

M1523001600230

SECOND SEAT BELT AND THIRD SEAT BELT

AC101433AB

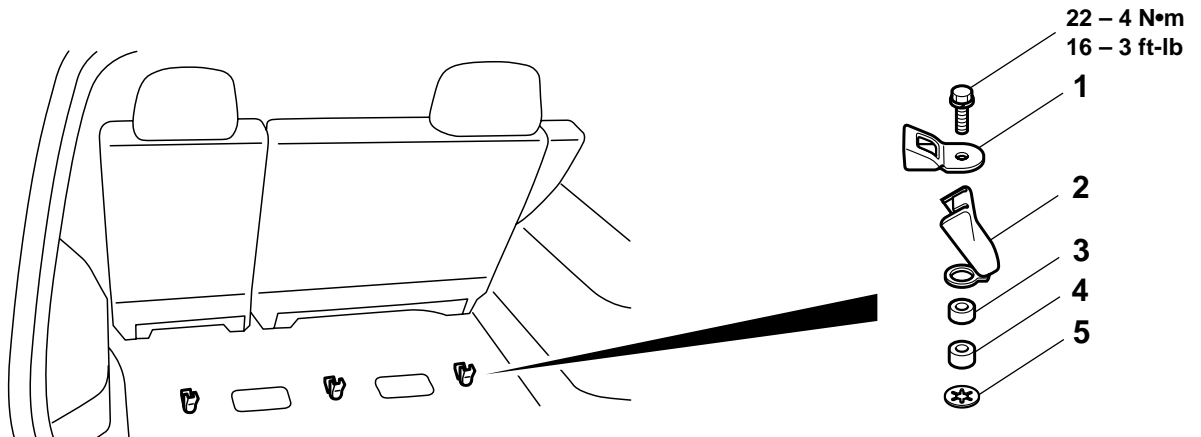
SECOND SEAT BELT REMOVAL STEPS

- LOWER QUARTER TRIM (REFER TO [P.52A-8.](#))
- 1. OUTER SEAT BELT CONNECTION
- 2. OUTER SEAT BELT
- 3. ELR COVER
- 4. INNER SEAT BELT (REFER TO [P.52A-19.](#))
- 5. CENTER SEAT BELT

THIRD SEAT BELT REMOVAL STEPS

- LOWER QUARTER TRIM (REFER TO [P.52A-8.](#))
- PILLAR DUCT (RH) (REFER TO GROUP 55, VENTILATORS [P.55A-156.](#))
- REAR BLOWER ASSEMBLY (REFER TO GROUP 55, BLOWER ASSEMBLY [P.55A-133.](#))
- 6. OUTER SEAT BELT CONNECTION
- 7. OUTER SEAT BELT
- 8. ELR COVER
- 9. INNER SEAT BELT (REFER TO [P.52A-24.](#))

TETHER ANCHOR



ACX01774AD

REMOVAL STEPS

1. TETHER ANCHOR BRACKET
2. COVER
3. SPACER 5 mm (0.2 inch)

REMOVAL STEPS (Continued)

4. SPACER 10 mm (0.4 inch)
5. FIBER WASHER

SPECIFICATIONS**FASTENER TIGHTENING SPECIFICATIONS**

M1521004100186

ITEM	SPECIFICATION
Armrest nut	22 ± 4 N·m (16 ± 3 ft-lb)
Catch assembly bolt	44 ± 10 N·m (33 ± 7 ft-lb)
Center seat belt bolt	44 ± 10 N·m (33 ± 7 ft-lb)
Front seatback frame bolt	44 ± 10 N·m (33 ± 7 ft-lb)
Front seat belt bolt	44 ± 10 N·m (33 ± 7 ft-lb)
Front seat bolt	44 ± 10 N·m (33 ± 7 ft-lb)
Front seat cushion frame bolt	21 ± 4 N·m (16 ± 2 ft-lb)
Front seat frame bolt	5 ± 1 N·m (44 ± 9 in-lb)
Front seat nut	30 ± 5 N·m (22 ± 4 ft-lb)
Hinge bracket lower bolt	13 ± 2 N·m (115 ± 18 in-lb)
Hinge bracket upper nut	12 ± 2 N·m (107 ± 17 in-lb)
Inner seat belt bolt	44 ± 10 N·m (33 ± 7 ft-lb)
Reclining adjuster lower bolt	44 ± 10 N·m (33 ± 7 ft-lb)
Reclining adjuster upper bolt	52 ± 7 N·m (38 ± 5 ft-lb)
Second seat bolt	44 ± 10 N·m (33 ± 7 ft-lb)
Second seat belt bolt	44 ± 10 N·m (33 ± 7 ft-lb)
Second seat catch assembly bolt	44 ± 10 N·m (33 ± 7 ft-lb)
Striker bolt	44 ± 10 N·m (33 ± 7 ft-lb)
Striker bolt	12 ± 2 N·m (107 ± 17 in-lb)
Tether anchor bolt	22 ± 4 N·m (16 ± 3 ft-lb)
Third seat belt bolt	44 ± 10 N·m (33 ± 7 ft-lb)
Third seat frame bolt	44 ± 10 N·m (33 ± 7 ft-lb)
Third seat latch bolt	44 ± 10 N·m (33 ± 7 ft-lb)