

# GROUP 52A

# INTERIOR

## CONTENTS

<b>SEAT BELT DIAGNOSIS</b> .....	<b>52A-2</b>	INSPECTION.....	52A-12
SEAT BELT WARNING SYSTEM DIAGNOSIS .....	52A-2	DISASSEMBLY AND ASSEMBLY .....	52A-14
		INSPECTION.....	52A-17
<b>SPECIAL TOOLS</b> .....	<b>52A-2</b>	<b>REAR SEAT ASSEMBLY</b> .....	<b>52A-18</b>
		REMOVAL AND INSTALLATION .....	52A-18
<b>INSTRUMENT PANEL ASSEMBLY*</b> .....	<b>52A-3</b>	DISASSEMBLY AND ASSEMBLY .....	52A-20
REMOVAL AND INSTALLATION .....	52A-3	<b>THIRD SEAT ASSEMBLY</b> .....	<b>52A-25</b>
DISASSEMBLY AND ASSEMBLY .....	52A-6	DISASSEMBLY AND ASSEMBLY .....	52A-25
<b>FLOOR CONSOLE ASSEMBLY</b> ....	<b>52A-7</b>	<b>FRONT SEAT BELT*</b> .....	<b>52A-28</b>
REMOVAL AND INSTALLATION .....	52A-7	REMOVAL AND INSTALLATION .....	52A-28
<b>TRIMS</b> .....	<b>52A-8</b>	INSPECTION.....	52A-29
REMOVAL AND INSTALLATION .....	52A-8	<b>REAR SEAT BELT</b> .....	<b>52A-29</b>
<b>HEADLINING</b> .....	<b>52A-10</b>	REMOVAL AND INSTALLATION .....	52A-29
REMOVAL AND INSTALLATION .....	52A-10	<b>SPECIFICATIONS</b> .....	<b>52A-31</b>
<b>FRONT SEAT ASSEMBLY*</b> .....	<b>52A-11</b>	FASTENER TIGHTENING	
REMOVAL AND INSTALLATION .....	52A-11	SPECIFICATIONS.....	52A-31

### WARNINGS REGARDING SERVICING OF SUPPLEMENTAL RESTRAINT SYSTEM (SRS) EQUIPPED VEHICLES

#### **WARNING**

- *Improper service or maintenance of any component of the SRS, or any SRS-related component, can lead to personal injury or death to service personnel (from inadvertent firing of the air bag) or to the driver and passenger (from rendering the SRS inoperative).*
- *Service or maintenance of any SRS component or SRS-related component must be performed only at an authorized MITSUBISHI dealer.*
- *MITSUBISHI dealer personnel must thoroughly review this manual, and especially its GROUP 52B - Supplemental Restraint System (SRS) before beginning any service or maintenance of any component of the SRS or any SRS-related component.*

#### NOTE

The SRS includes the following components: SRS air bag control unit, SRS warning light, front impact sensors, air bag module, clock spring, and interconnecting wiring. Other SRS-related components (that may have to be removed/installed in connection with SRS service or maintenance) are indicated in the table of contents by an asterisk (\*).

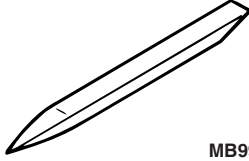
**SEAT BELT DIAGNOSIS****SEAT BELT WARNING SYSTEM DIAGNOSIS**

M1523004500050

The seat belt warning system is controlled by the Simplified Wiring System (SWS). For troubleshooting, refer to GROUP 54B, SWS Diagnosis [P.54B-82](#).

**SPECIAL TOOLS**

M1521000600026

TOOL	TOOL NUMBER AND NAME	SUPERSESSION	APPLICATION
 <p style="text-align: center;">MB990784</p>	MB990784 Ornament remover	General service tool	Removal of switch, trim, etc.

## INSTRUMENT PANEL ASSEMBLY




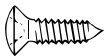



### REMOVAL AND INSTALLATION

M1521001700639

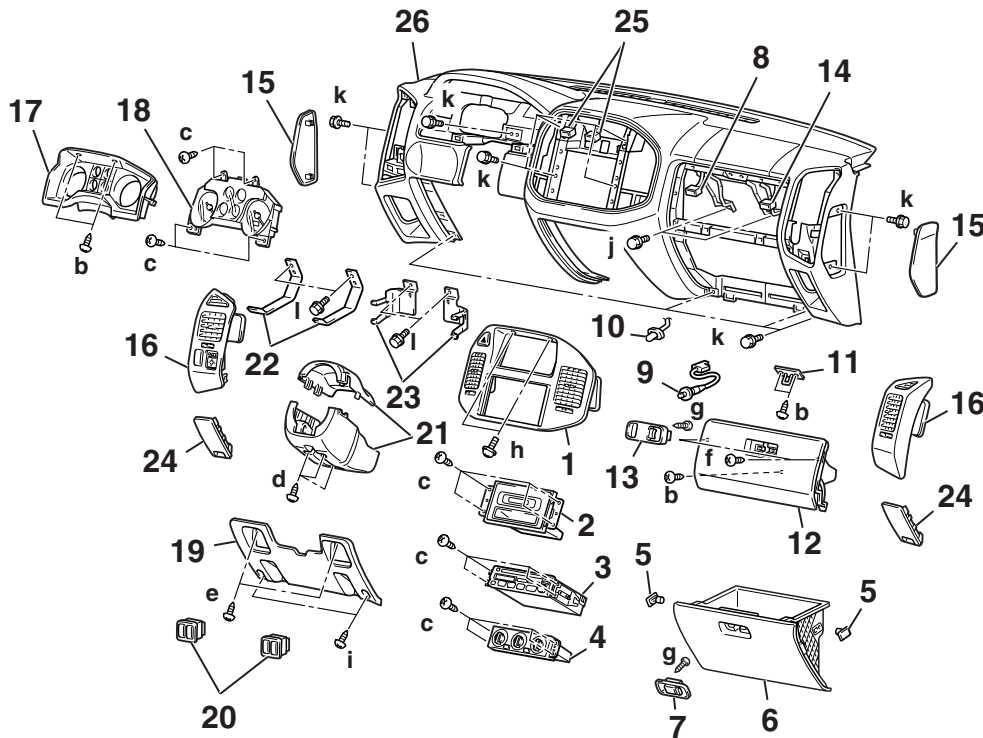
**⚠ WARNING**

**For removal and installation of the passenger's side air bag module, always observe the service procedures described in GROUP 52B, Air Bag Module and Clock Spring P.52B-217.**

The bolts and screws described below are used for installation of the instrument panel. They are indicated by symbols in the illustration.

NAME	SYMBOL	SIZE (D × L) mm (in)	COLOR	SHAPE
Tapping screw	a	5 × 12 (0.20 × 0.47)	-	 ACX01282AB
	b	5 × 16 (0.20 × 0.63)	Black	 ACX01283AB
	c	5 × 16 (0.20 × 0.63)	-	
	d	5 × 20 (0.20 × 0.79)	-	
	e	5 × 20 (0.20 × 0.79)	Black	 ACX01284AB
	f	5 × 16 (0.20 × 0.63)	Black	
	g	4 × 20 (0.16 × 0.79)	Black	 AC101783
Washer assembled bolt	h	5 × 16 (0.20 × 0.63)	-	 ACX01285AB
Washer assembled bolt	i	5 × 20 (0.20 × 0.79)	Black	 ACX02229AB
	j	6 × 16 (0.24 × 0.63)	-	
	k	6 × 16 (0.24 × 0.63)	Black	
	l	6 × 20 (0.24 × 0.79)	-	 ACX00614AB

D: Thread diameter L: Effective thread length



ACX01622AD

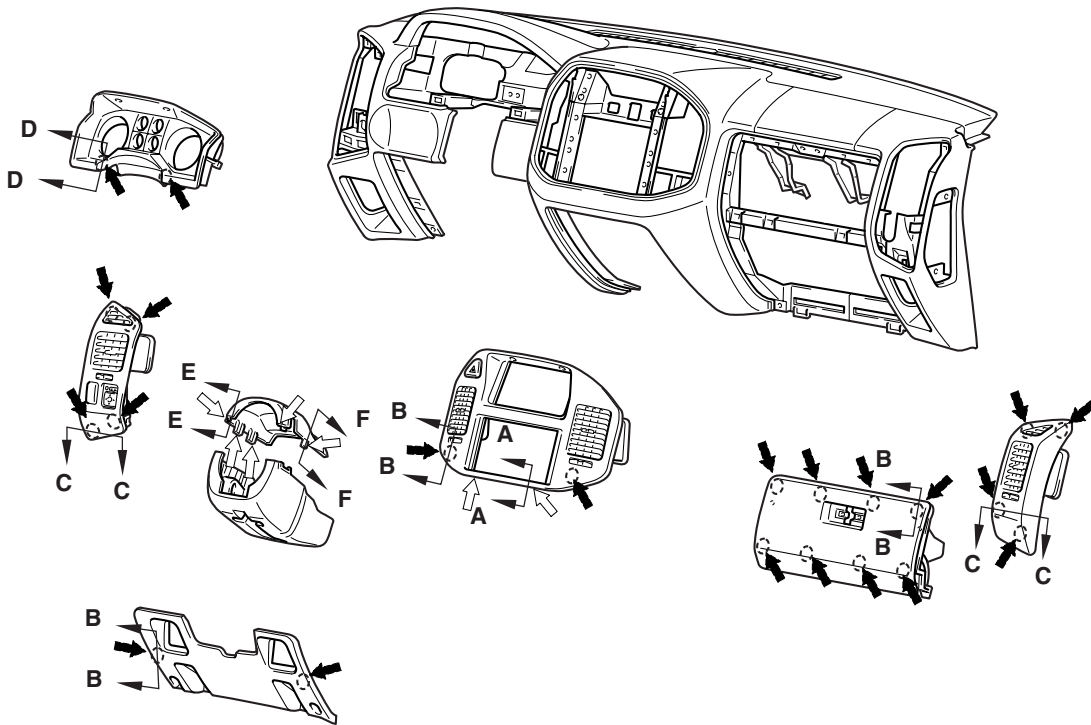
**REMOVAL STEPS**

- FRONT FLOOR CONSOLE  
(REFER TO P.52A-7.)
- 1. CENTER PANEL ASSEMBLY
- 2. CLOCK OR RV METER
- 3. RADIO AND TAPE PLAYER OR BOX
- 4. HEATER CONTROL ASSEMBLY
- 5. GLOVE BOX STOPPER
- 6. GLOVE BOX ASSEMBLY
- 7. GLOVE BOX LOCK
- 8. GLOVE BOX LIGHT SWITCH  
HARNESS CONNECTOR
- 9. GLOVE BOX LIGHT SWITCH
- 10. GLOVE BOX LIGHT
- 11. UPPER GLOVE BOX STRIKER
- 12. UPPER GLOVE BOX ASSEMBLY
- 13. UPPER GLOVE BOX LID LOCK
- 14. FRONT PASSENGER'S SIDE AIR  
BAG MODULE HARNESS  
CONNECTOR
- 15. INSTRUMENT PANEL SIDE COVER
- 16. AIR OUTLET ASSEMBLY
- 17. METER BEZEL

**REMOVAL STEPS (Continued)**

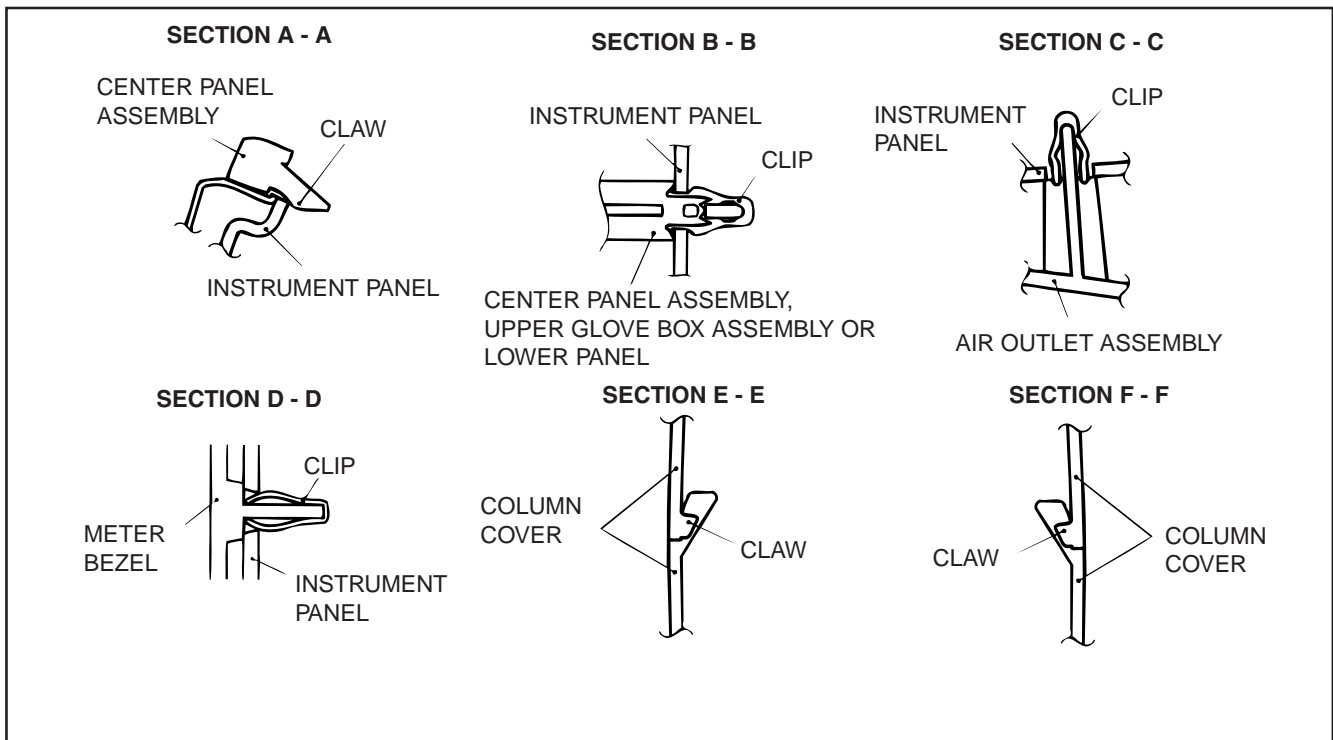
- 18. COMBINATION METER
- HOOD OPENER LEVER (REFER TO  
GROUP 42, HOOD P.42-5.)
- FUEL LID OPENER LEVER (REFER  
TO GROUP 42, FUEL FILLER DOOR  
P.42-8.)
- 19. LOWER PANEL
- 20. SWITCH PANEL
- 21. COLUMN COVER
- 22. STAY A
  - ASSIST GRIP (REFER TO P.52A-8.)
- FRONT PILLAR TRIM (REFER TO  
P.52A-8.)
- 23. STAY B
- 24. CORNER LOWER PANEL
  - STEERING SHAFT MOUNTING  
BOLT (REFER TO GROUP 37,  
STEERING COLUMN AND SHAFT  
P.37-22.)
- 25. PHOTO SENSOR HARNESS  
CONNECTOR
- 26. INSTRUMENT PANEL ASSEMBLY

CLIP AND CLAW POSITIONS



NOTE

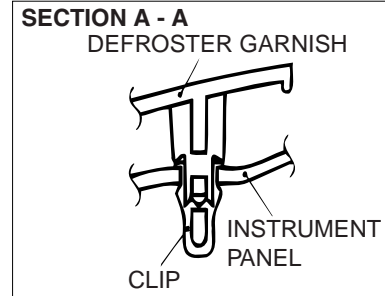
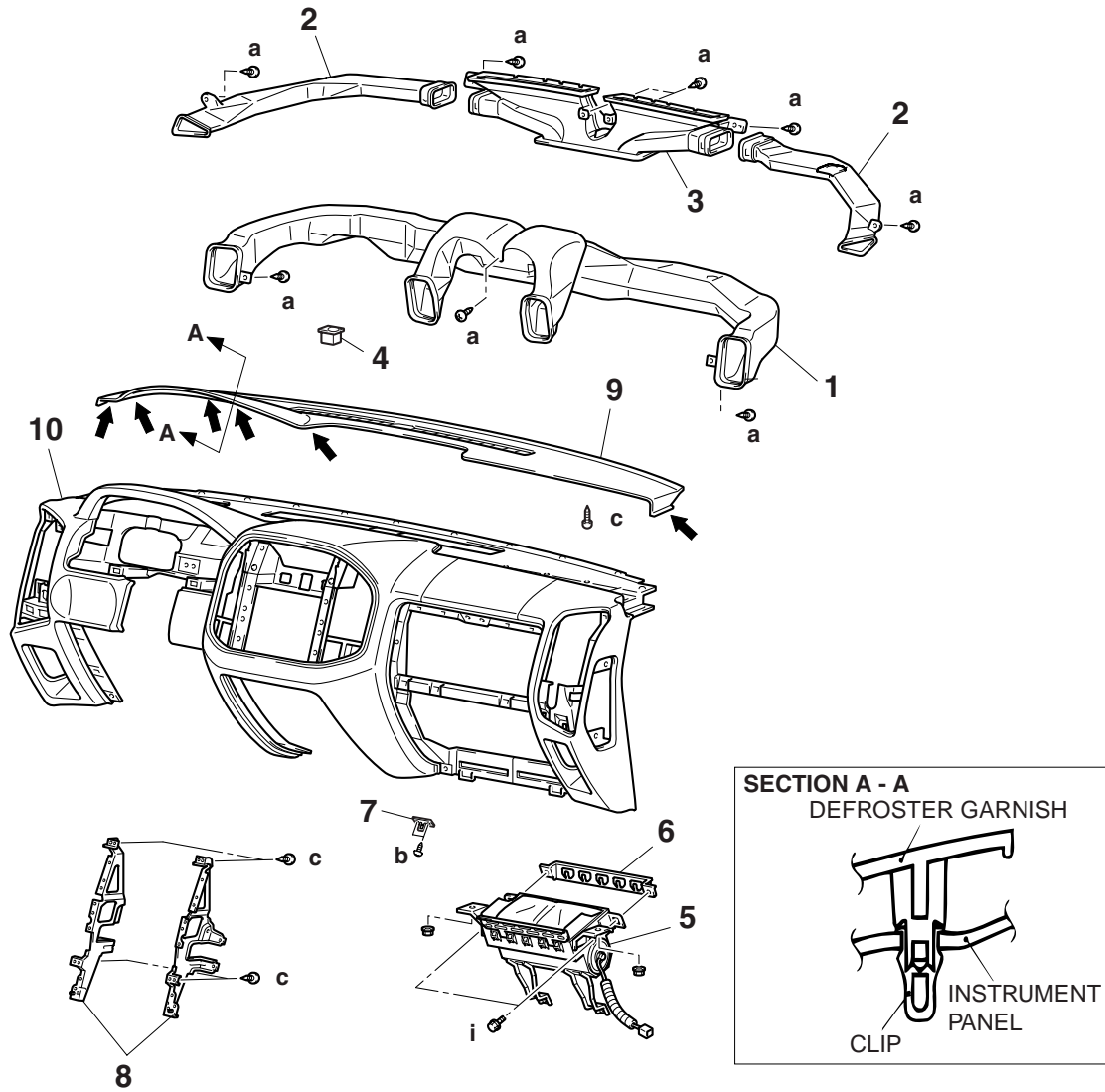
- (1) : CLIP POSITIONS
- (2) : CLAW POSITIONS



ACX01621AE

DISASSEMBLY AND ASSEMBLY

M1521001900473



NOTE

← : CLIP POSITIONS

**DISASSEMBLY STEPS**

1. DISTRIBUTION DUCT
2. SIDE DEFROSTER DUCT
3. CENTER DEFROSTER DUCT
4. PHOTO SENSOR
5. FRONT PASSENGER'S SIDE AIR BAG MODULE (REFER TO GROUP 52B, AIR BAG MODULES AND CLOCK SPRING P.52B-217.
6. AIR BAG SIDE PLATE

**DISASSEMBLY STEPS**

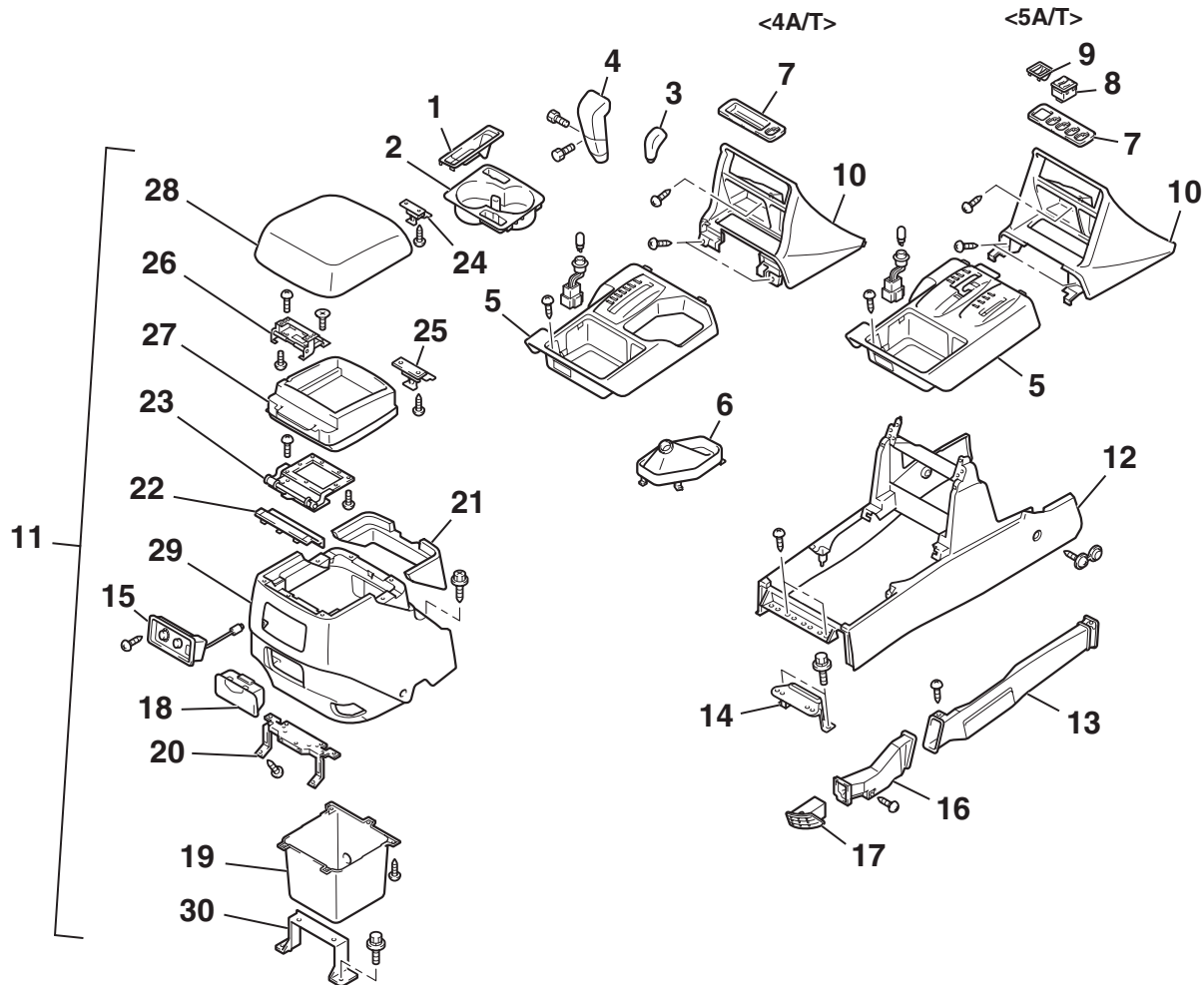
7. GLOVE BOX STRIKER
8. INSTRUMENT PANEL CENTER REINFORCEMENTS
9. DEFROSTER GARNISH
10. INSTRUMENT PANEL

ACX01481AG

# FLOOR CONSOLE ASSEMBLY

## REMOVAL AND INSTALLATION

M1521002200198



AC203826AB

### REMOVAL STEPS

1. PARKING BRAKE LEVER COVER
2. CUP HOLDER
3. TRANSFER SHIFT KNOB
4. SELECTOR LEVER KNOB
5. INDICATOR PANEL
6. TRANSFER SHIFT COVER <4A/T>
7. SWITCH PANEL
8. HEATED SEAT SWITCH  
<VEHICLES WITH HEATED SEAT>
9. COIN PLUG <VEHICLES WITHOUT  
HEATED SEAT>
10. LOWER CENTER PANEL
11. REAR FLOOR CONSOLE  
ASSEMBLY
  - PARKING BRAKE LEVER  
MOUNTING BOLT (REFER TO  
GROUP 36, PARKING BRAKES  
[P.36-6.](#))
12. FRONT FLOOR CONSOLE
13. REAR HEATER DUCT A

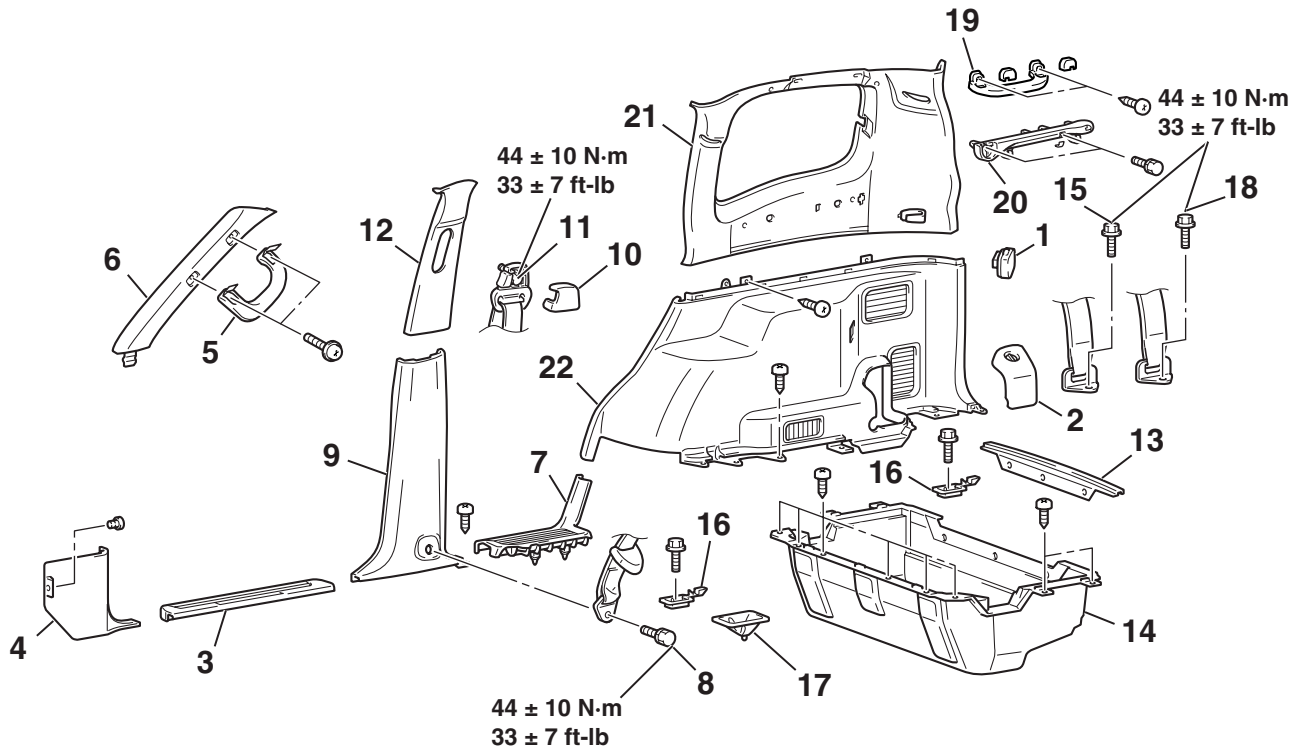
### REMOVAL STEPS (Continued)

14. CONSOLE BRACKET A
15. REAR HEATER CONTROL  
ASSEMBLY
16. REAR HEATER DUCT B
17. REAR HEATER DUCT NOZZLE
18. REAR FLOOR CONSOLE ASHTRAY
19. REAR FLOOR CONSOLE BOX
20. REAR FLOOR CONSOLE BRACKET
21. REAR FLOOR CONSOLE UPPER  
COVER
22. REAR FLOOR CONSOLE HINGE  
COVER
23. HINGE BRACKET
24. LOCK A
25. LOCK B
26. LID BRACKET
27. LID BOX
28. LID ASSEMBLY
29. REAR FLOOR CONSOLE
30. CONSOLE BRACKET B

## TRIMS

## REMOVAL AND INSTALLATION

M1521001100574

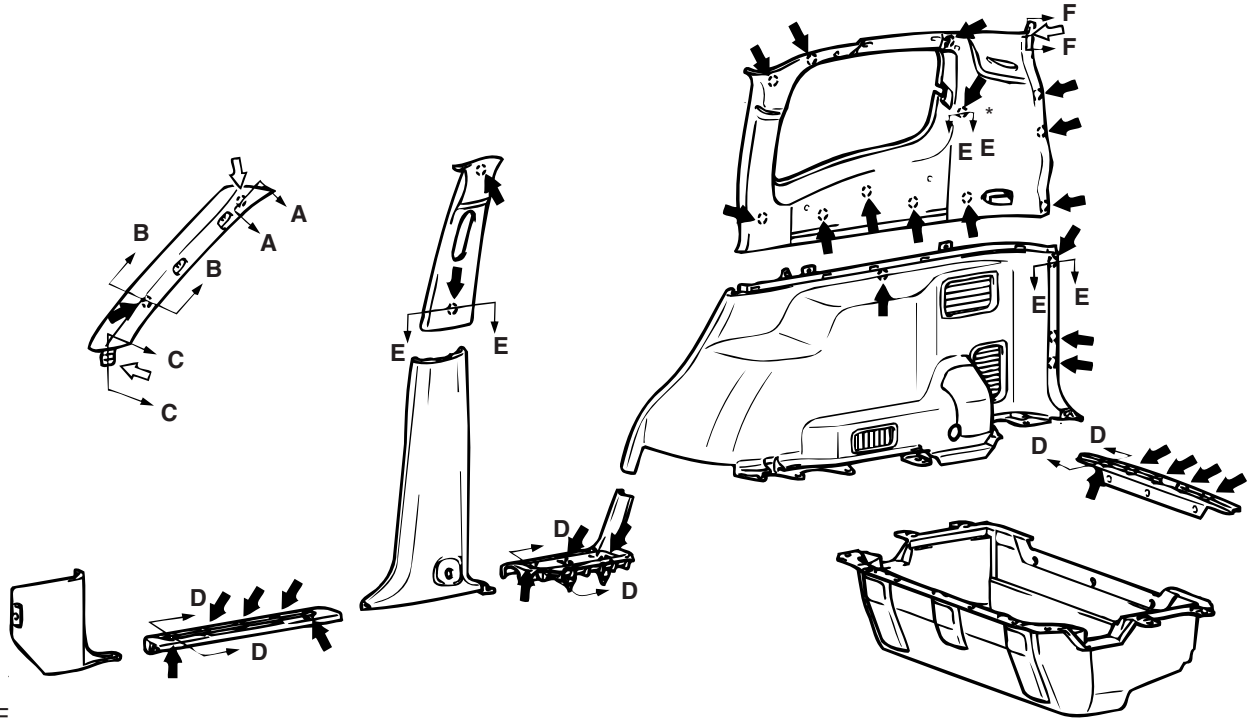


AC006066AB

- |                               |                                 |
|-------------------------------|---------------------------------|
| 1. ACCESSORY SOCKET           | 11. FRONT SEAT BELT CONNECTION  |
| 2. QUARTER TRIM COVER         | 12. UPPER CENTER PILLAR TRIM    |
| • THIRD SEAT ASSEMBLY         | 13. BACK DOOR SCUFF PLATE       |
| 3. FRONT SCUFF PLATE          | 14. LUGGAGE FLOOR BOX           |
| 4. COWL SIDE TRIM             | 15. SECOND SEAT BELT CONNECTION |
| 5. ASSIST GRIP                | 16. LUGGAGE HOOK                |
| 6. FRONT PILLAR TRIM          | 17. STRIKER COVER               |
| 7. REAR SCUFF PLATE           | 18. THIRD SEAT BELT CONNECTION  |
| 8. FRONT SEAT BELT CONNECTION | 19. ASSIST GRIP                 |
| 9. LOWER CENTER PILLAR TRIM   | 20. SHELF HOLDER ASSEMBLY       |
| 10. SASH GUIDE COVER          | 21. UPPER QUARTER TRIM          |
|                               | 22. LOWER QUARTER TRIM          |

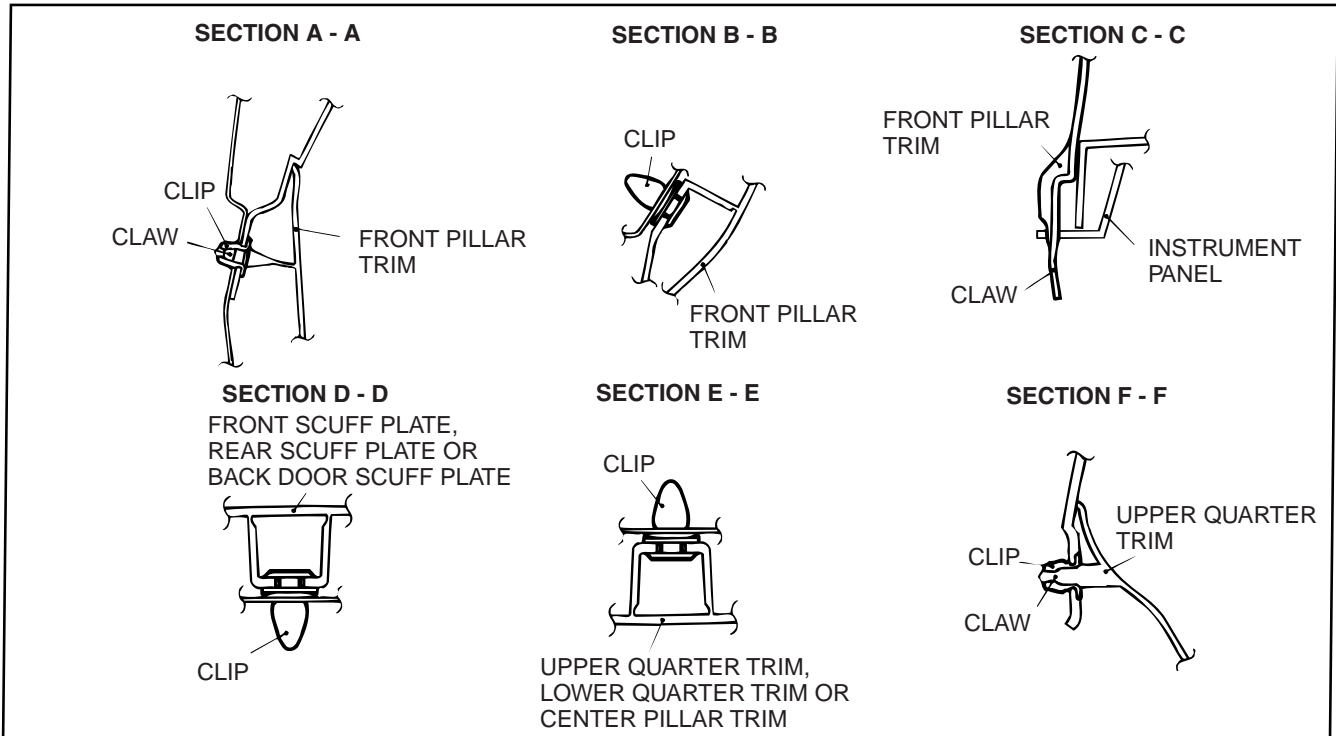


CLIP AND CLAW POSITIONS



NOTE

- (1) : CLIP POSITIONS (\*: LH SIDE ONLY)
- (2) : CLAW POSITIONS



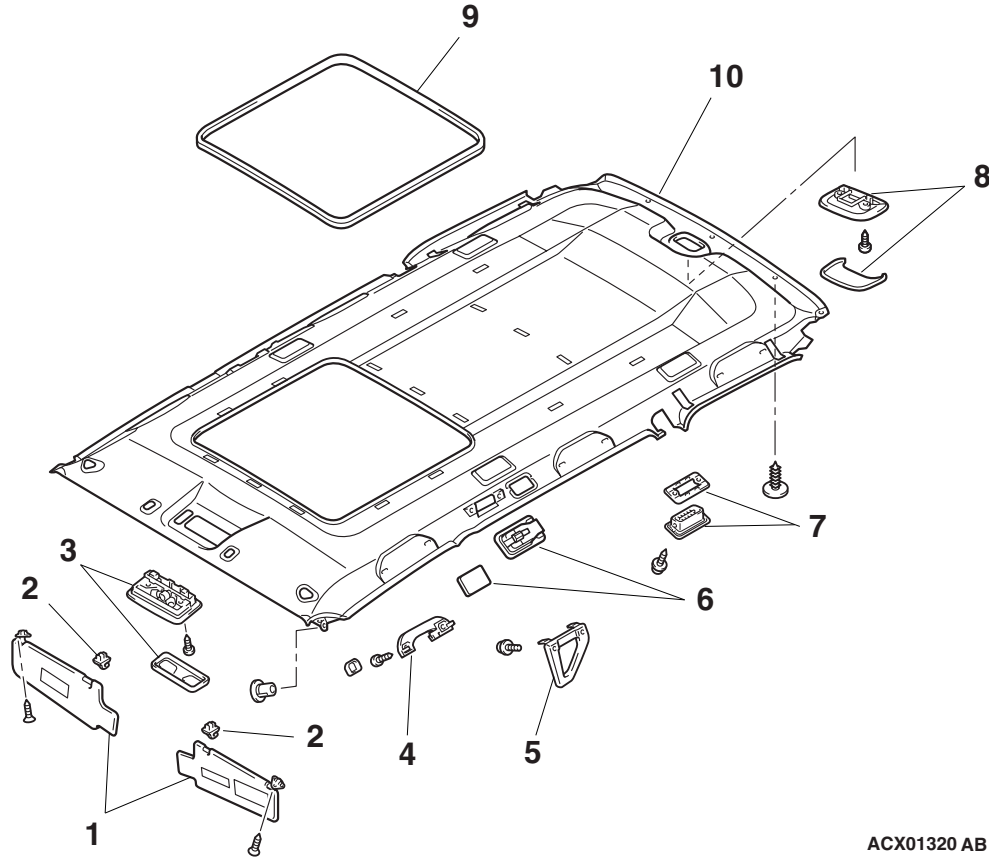
ACX02367AD

**HEADLINING****REMOVAL AND INSTALLATION**

M1521001400230

**Pre- removal and Post-installation Operation**

- Front Pillar Trim, Upper Center Pillar Trim and Upper Quarter Trim Removal and Installation (Refer to P.52A-8).



ACX01320 AB

**REMOVAL STEPS**

1. SUNVISOR ASSEMBLY
2. SUNVISOR HOLDER
3. DOME AND MAP LIGHT ASSEMBLY
4. ASSIST GRIP
5. GRIP

**REMOVAL STEPS (Continued)**

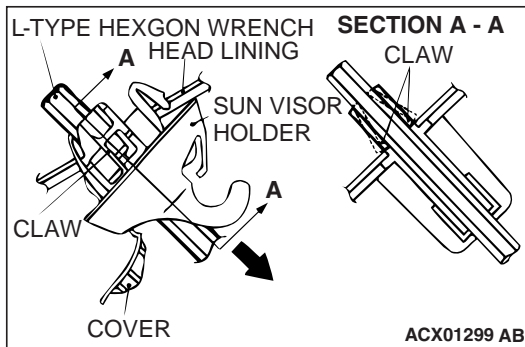
6. DOME LIGHT ASSEMBLY
7. AIR OUTLET ASSEMBLY
8. CARGO ROOM LIGHT ASSEMBLY
9. HEADLINING TRIM
10. HEADLINING

&lt;&lt;A&gt;&gt;

REMOVAL SERVICE POINTS

<<A>> SUNVISOR HOLDER REMOVAL

1. Remove the sunvisor holder cover, insert a 6 mm L-shaped hexagon wrench to disengage the sunvisor holder side claws.
2. Pull out the sunvisor into the direction shown to remove the sunvisor holder.



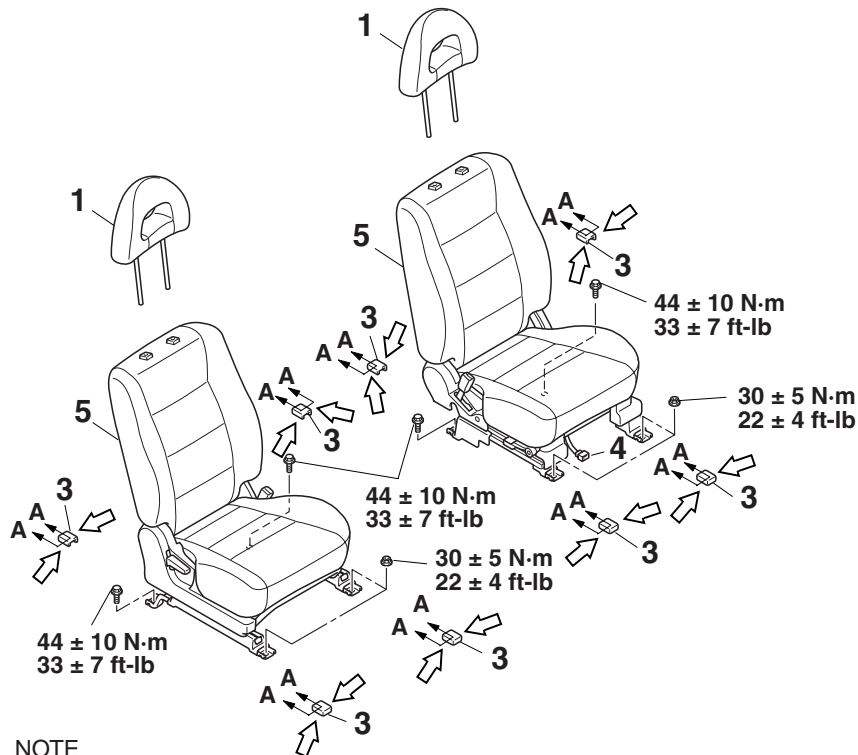
FRONT SEAT ASSEMBLY

REMOVAL AND INSTALLATION

M1522001300515

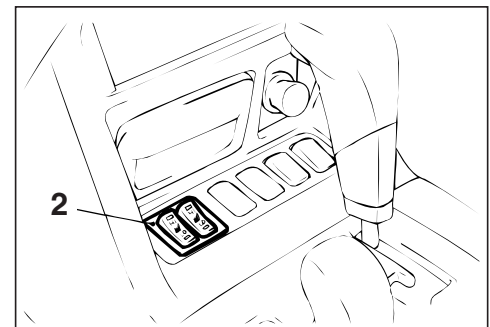
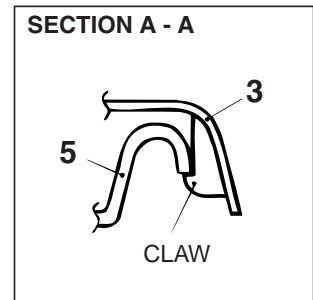
**WARNING**

Before removing the front seat assembly, refer to *GROUP 52B, Service Precautions P.52B-18 and Air Bag Module and Clock Spring P.52B-217.*



NOTE  
↔ : CLAW POSITIONS

1. HEAD RESTRAINT
2. HEATED SEAT SWITCH <VEHICLE WITH HEATED SEAT>



ACX00620AE

FRONT SEAT ASSEMBLY  
REMOVAL STEPS

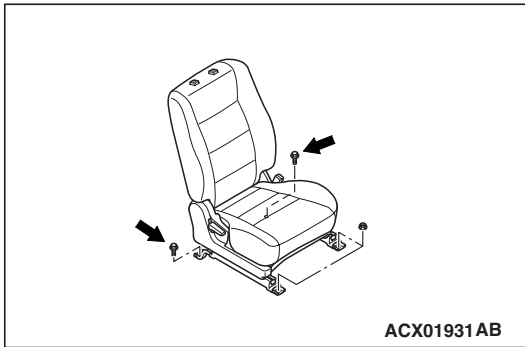
3. FRONT SEAT ANCHOR COVER
4. HARNESS CONNECTOR
- >>A<< 5. FRONT SEAT ASSEMBLY

**INSTALLATION SERVICE POINTS**

**>>A<< FRONT SEAT ASSEMBLY INSTALLATION**

Tighten the bolts shown while no weight is applied to the front seat cushion.

*NOTE: First install all of the front seat assembly mounting nuts and bolts, and then tighten them to the specified torque.*

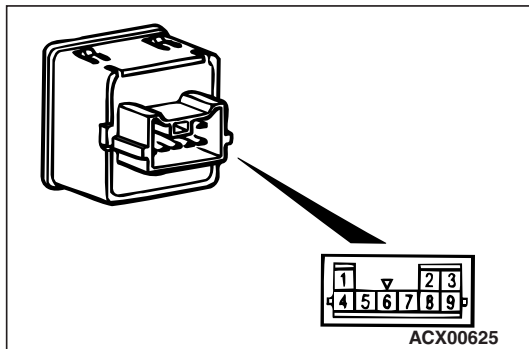


**INSPECTION**

M1522005500124

**CONTINUITY TEST OF HEATED SEAT SWITCH**

1. Check for continuity between terminals.



ITEM	SWITCH POSITION	TESTER CONNECTION	SPECIFIED CONDITION
Driver's seat side	HI	1 - 5, 3 - 5, 5 - 8	Less than 2 ohms
	OFF	1 - 3, 1 - 5, 1 - 8, 3 - 5, 3 - 8, 5 - 8	Open circuit
	LO	3 - 5, 5 - 8	Less than 2 ohms
Front passenger's seat side	HI	4 - 5, 5 - 9	Less than 2 ohms
	OFF	4 - 5, 4 - 8, 4 - 9, 5 - 8, 5 - 9, 8 - 9	Open circuit
	LO	5 - 8, 5 - 9	Less than 2 ohms

2. Check that the indicator is lighted at HI or LO when battery voltage is supplied to the terminal 5 and the terminal 8 is grounded.
3. Check that illumination is lighted when battery voltage is supplied to the terminals 2 and 6.

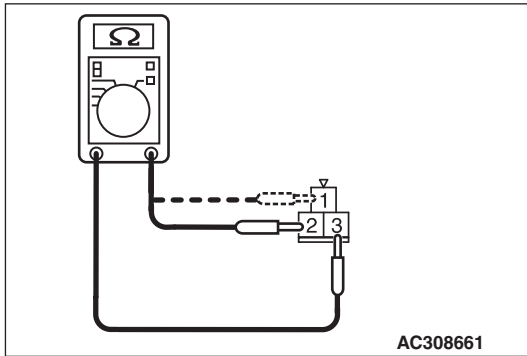
**SEAT CUSHION HEATER CHECK**

Measure the resistance between terminals.

**Standard value: At room temperature 20 °C (68 °F)**

**Between terminals 2 and 3: Approximately 4.2  $\Omega$   $\pm$  10%**

**Between terminals 1 and 3: 4.0  $\Omega$   $\pm$  10%**

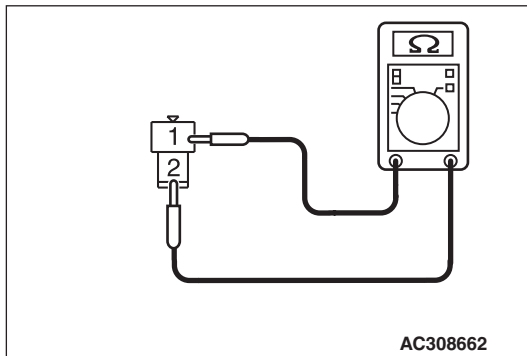


**SEATBACK HEATER CHECK**

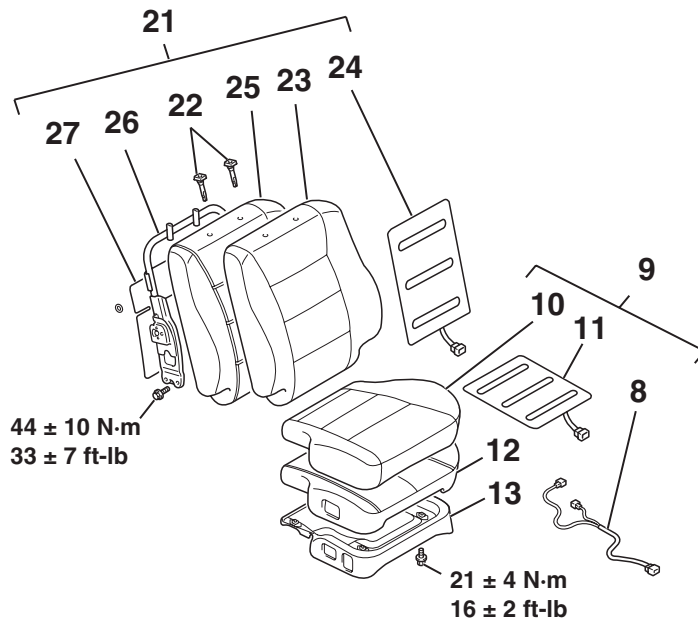
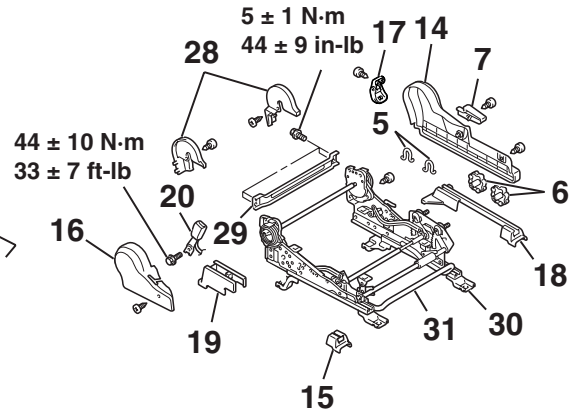
Measure the resistance between terminals.

**Standard value: At room temperature 20 °C (68 °F)**

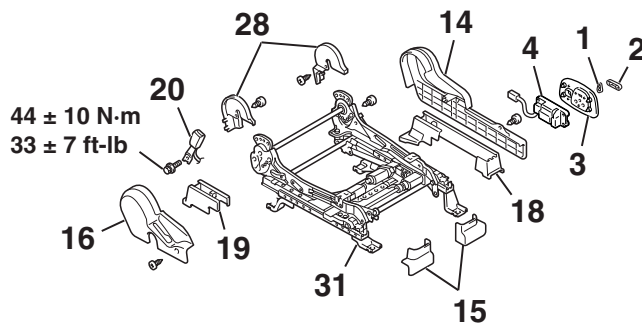
**Approximately 4.6  $\Omega$   $\pm$  10%**



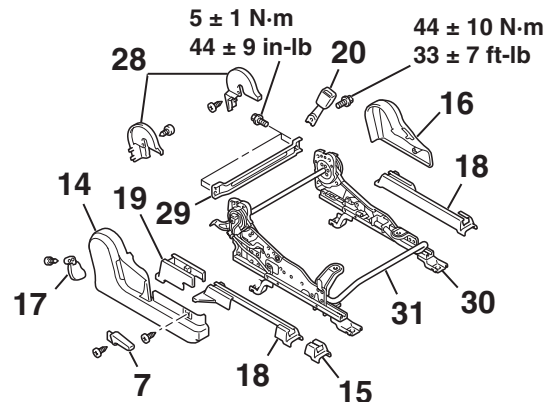
## DISASSEMBLY AND ASSEMBLY

<DUAL HEIGHT ADJUSTER SEAT  
(DRIVER'S SEAT SIDE)>

## &lt;POWER SEAT&gt;



## &lt;NORMAL SEAT (PASSENGER'S SEAT SIDE)&gt;



AC309202 AB

**DISASSEMBLY STEPS**

1. RECLINING ADJUSTER KNOB  
<VEHICLES WITH POWER SEATS>
2. SLIDE ADJUSTER KNOB  
<VEHICLES WITH POWER SEATS>
3. POWER SEAT SWITCH GARNISH  
<VEHICLES WITH POWER SEATS>
4. POWER SEAT SWITCH <VEHICLES WITH POWER SEATS>
5. CLIP <VEHICLES WITH DUAL HEIGHT ADJUSTER SEATS>
6. HEIGHT ADJUSTER KNOB  
<VEHICLES WITH DUAL HIGH ADJUSTER SEATS>
7. RECLINING ADJUSTER LEVER  
<VEHICLES WITHOUT POWER SEAT>
8. HARNESS CLAMP
9. FRONT SEAT CUSHION ASSEMBLY

&lt;&lt;A&gt;&gt;

**DISASSEMBLY STEPS (Continued)**

10. FRONT SEAT CUSHION COVER
11. SEAT CUSHION HEATER  
<VEHICLES WITH HEATED SEATS>
12. FRONT SEAT CUSHION PAD
13. FRONT SEAT CUSHION FRAME
14. SIDE SHIELD COVER
15. FRONT RAIL COVER
16. HINGE COVER
17. REAR RAIL COVER <VEHICLES WITHOUT POWER SEAT>
18. SEAT SLIDE ADJUSTER SIDE COVER
19. SEAT SLIDE ADJUSTER INNER SIDE COVER
20. INNER SEAT BELT
21. FRONT SEATBACK ASSEMBLY
22. HEAD RESTRAINT GUIDE
23. FRONT SEATBACK COVER

**DISASSEMBLY STEPS (Continued)**

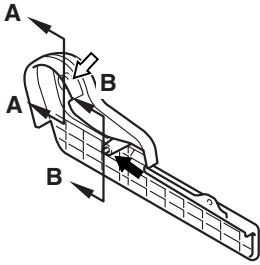
24. FRONT SEATBACK HEATER  
<VEHICLES WITH HEATED SEATS>
25. FRONT SEATBACK PAD
26. FRONT SEATBACK FRAME  
<VEHICLES WITHOUT SIDE AIR  
BAG>
27. FRONT SEATBACK BOARD

**DISASSEMBLY STEPS (Continued)**

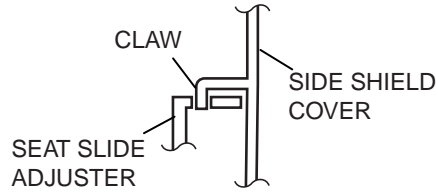
28. RECLINING ADJUSTER LOWER  
COVER
29. FRONT SEAT FRAME <VEHICLES  
WITHOUT POWER SEAT>
30. SEAT SLIDE ADJUSTER
31. SEAT SLIDE ADJUSTER LEVER  
<VEHICLES WITHOUT POWER  
SEAT>

CLIP AND CLAW POSITIONS

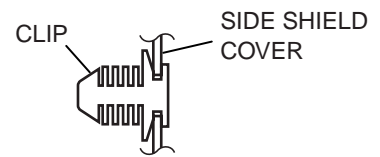
<SIDE SHIELD COVER>



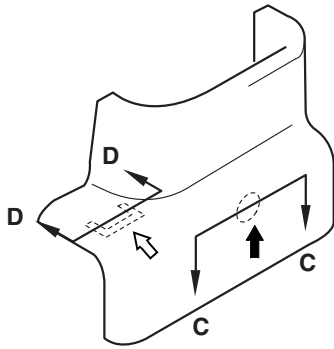
SECTION A - A



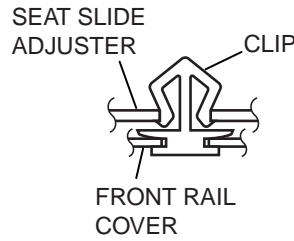
SECTION B - B



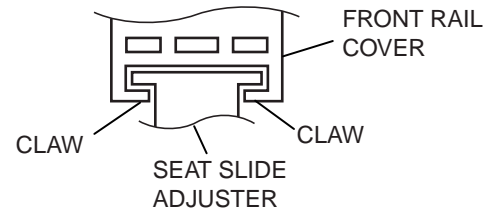
<FRONT RAIL COVER>



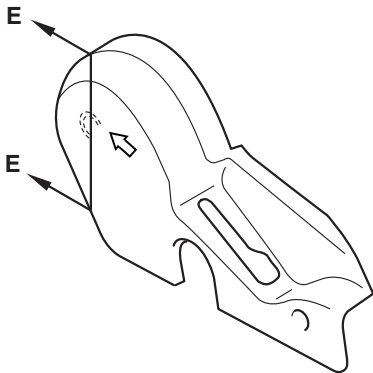
SECTION C - C



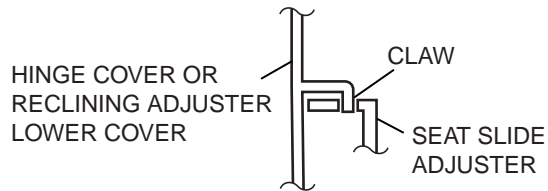
SECTION D - D



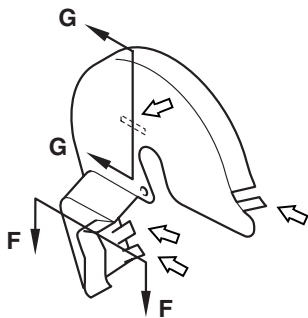
<HINGE COVER>



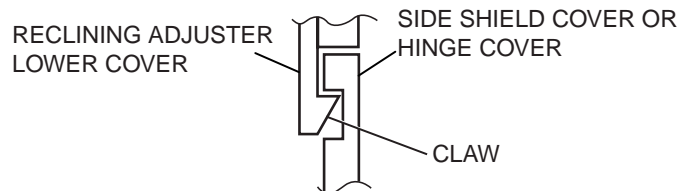
SECTION E - E, G - G



<RECLINING ADJUSTER LOWER COVER>



SECTION F - F



NOTE

- (1) : CLIP POSITIONS
- (2) : CLAW POSITIONS

ACX01417AE



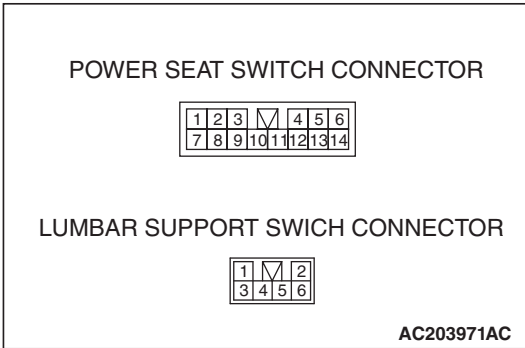
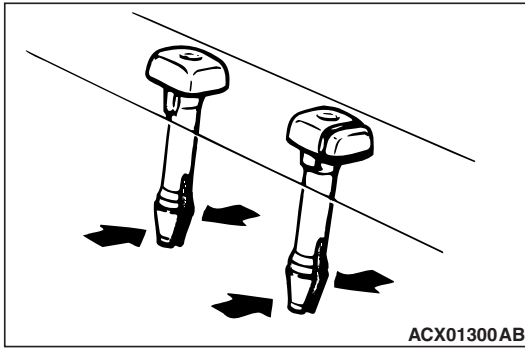
**REMOVAL SERVICE POINT**

<<A>>HEAD RESTRAINT GUIDE REMOVAL

**INSPECTION**

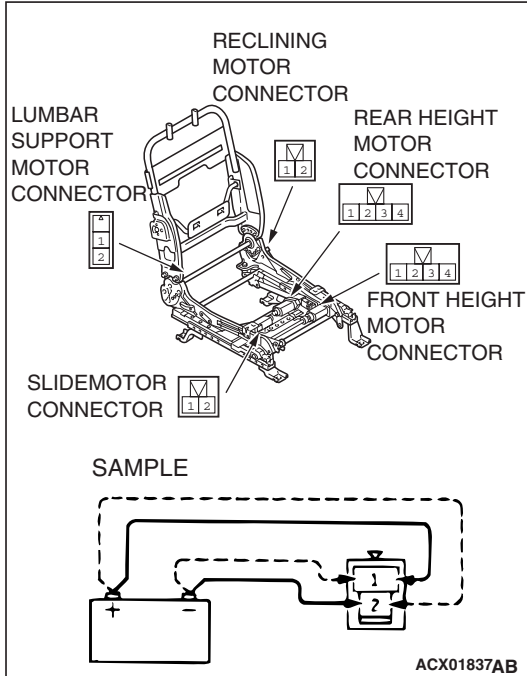
M1522001400095

**Power seat manual switch continuity check**



SWITCH POSITION		TESTER CONNECTION	SPECIFIED CONDITION
Reclining switch	FRONT	4-14, 3-13	Less than 2 ohms
	REAR	4-13, 3-14	Less than 2 ohms
Slide switch	FRONT	7-14, 8-13	Less than 2 ohms
	REAR	7-13, 8-14	Less than 2 ohms
Front height switch	UP	5-14, 6-13	Less than 2 ohms
	DOWN	5-13, 6-14	Less than 2 ohms
Rear height switch	UP	2-14, 1-13	Less than 2 ohms
	DOWN	2-13, 1-14	Less than 2 ohms
Lumbar support switch	FRONT	4-5, 3-6	Less than 2 ohms
	REAR	4-6, 3-5	Less than 2 ohms

**Operation check of power seat motor**

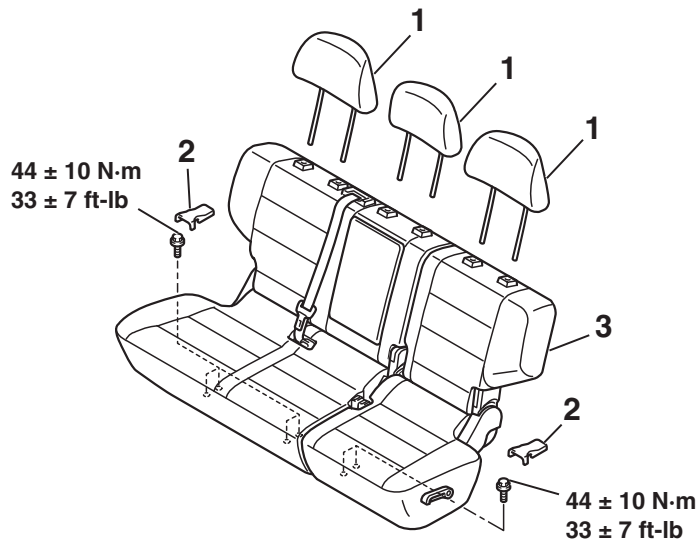


1. Disconnect the connector of each motor.
2. Check that when the battery is directly connected to the motor terminal, the motor turns smoothly and each adjusting mechanism operates as stated below for each motor.
  - (1) Connect the battery power supply to the terminal 1 and ground the terminal 2 for the front height down side, rear slide side and the rear lumbar support side.
  - (2) Connect the battery power supply to the terminal 2 and ground the terminal 1 for the front height up side, front slide side and front lumbar support side.
  - (3) Connect the battery power supply to the terminal 3 and ground the terminal 4 for the rear height down side and connect the battery power supply to the terminal 4 and ground the terminal 3 for the rear height up side.
  - (4) Connect the battery power supply to the terminal 2 and ground the terminal 1 for the rear reclining side and connect the battery power supply to the terminal 1 and ground the terminal 2 for the front reclining side.
3. If abnormality was found, check the power seat adjuster assembly.

**REAR SEAT ASSEMBLY**

**REMOVAL AND INSTALLATION**

M1522001800383



AC006064AB

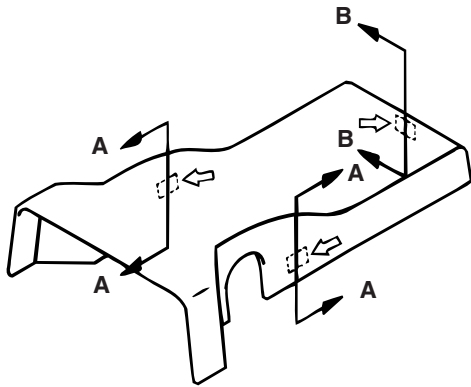
1. HEAD RESTRAINT

**REMOVAL STEPS**

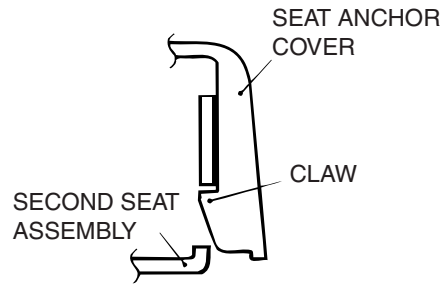
2. SEAT ANCHOR COVER
3. SECOND SEAT ASSEMBLY

CLAW POSITIONS

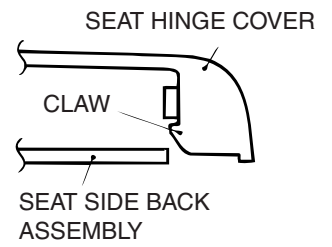
<SEAT ANCHOR COVER>



SECTION A - A



SECTION B - B



NOTE

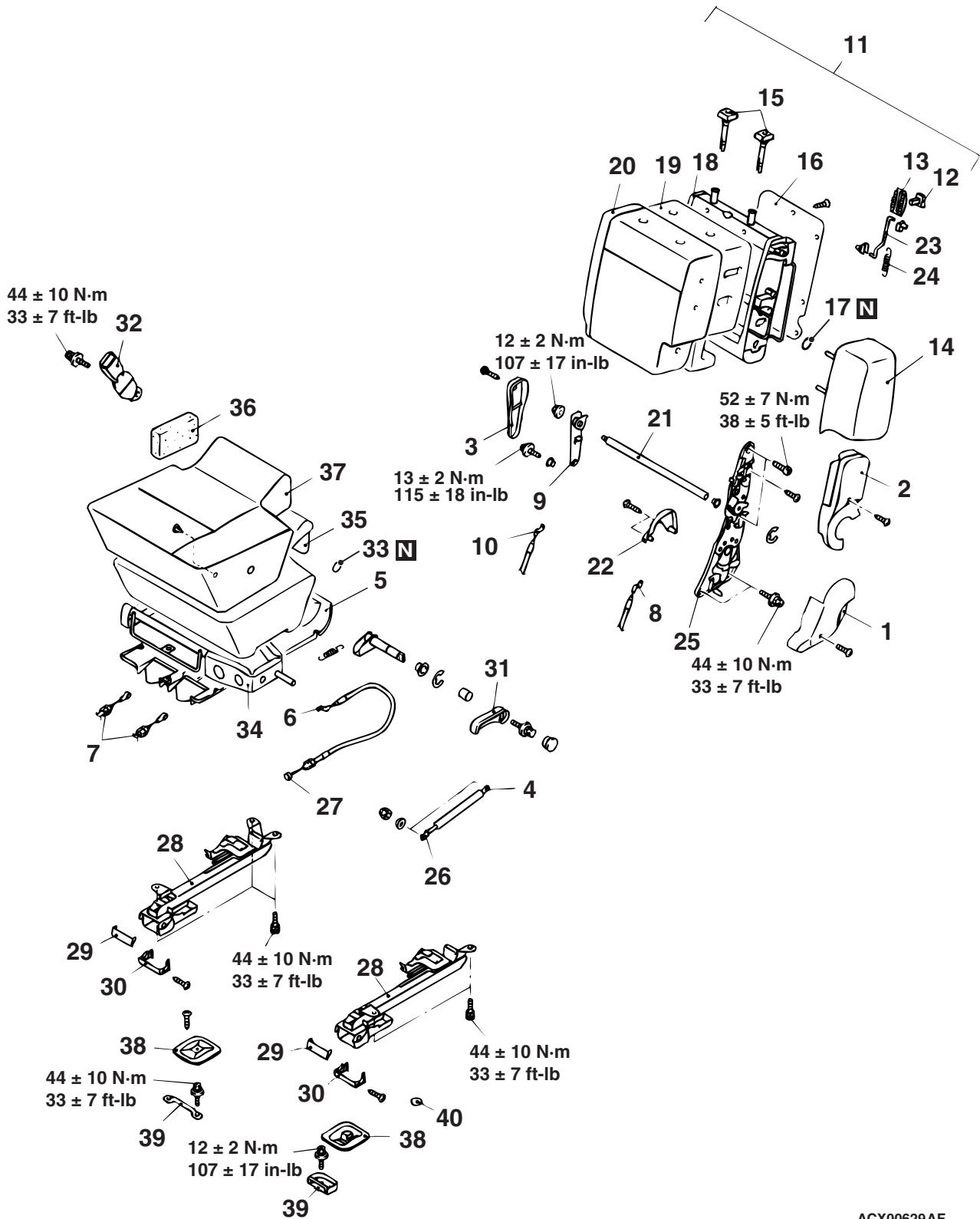
⇐: CLAW POSITIONS

AC101440 AD

DISASSEMBLY AND ASSEMBLY

M1522002000454

<LH SIDE>



ACX00629AF

**DISASSEMBLY STEPS**

1. LOWER RECLINING ADJUSTER COVER
2. CENTER RECLINING ADJUSTER COVER
3. FREE HINGE COVER
4. GAS SPRING CONNECTION
5. SECOND SEAT CUSHION UNDER COVER
6. RECLINING CABLE CONNECTION
7. CATCH CABLE A AND B CONNECTION
8. CATCH CABLE A
9. HINGE BRACKET
10. CATCH CABLE B
11. SECOND SEATBACK ASSEMBLY
12. FOLDING LEVER KNOB
13. FOLDING KNOB GARNISH
14. SECOND SEAT SIDE BACK ASSEMBLY
15. HEAD RESTRAINT GUIDE
16. SECOND SEATBACK BOARD
17. HOG RING
18. SECOND SEATBACK FRAME

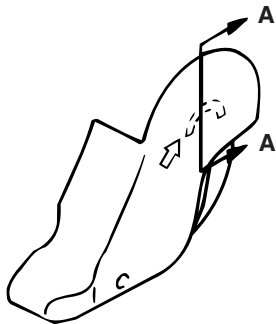
**DISASSEMBLY STEPS**

19. SECOND SEATBACK PAD
20. SECOND SEATBACK COVER
21. SHAFT
22. RECLINING ADJUSTER BACK COVER
23. ROD
24. SPRING
25. RECLINING ADJUSTER
26. GAS SPRING
27. RECLINING CABLE
28. SECOND SEAT CATCH ASSEMBLY
29. UPPER FOOT COVER
30. LOWER FOOT COVER
31. RECLINING KNOB
32. INNER SEAT BELT
33. HOG RING
34. SECOND SEAT CUSHION FRAME
35. SECOND SEAT CUSHION PAD
36. SUPPORT PAD
37. SECOND SEAT CUSHION COVER
38. STRIKER COVER
39. STRIKER
40. PLUG

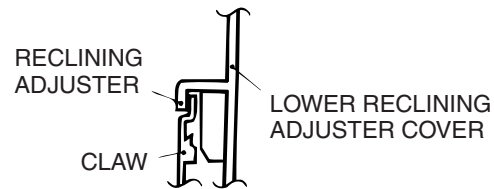
<<A>>

**CLAW POSITIONS**

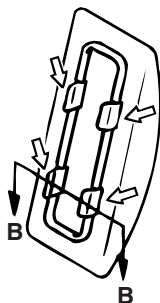
<LOWER RECLINING ADJUSTER COVER>



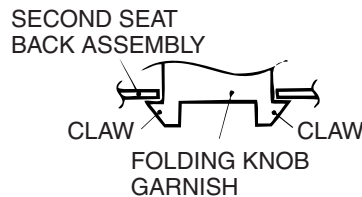
SECTION A - A



<FOLDING KNOB GARNISH>



SECTION B - B

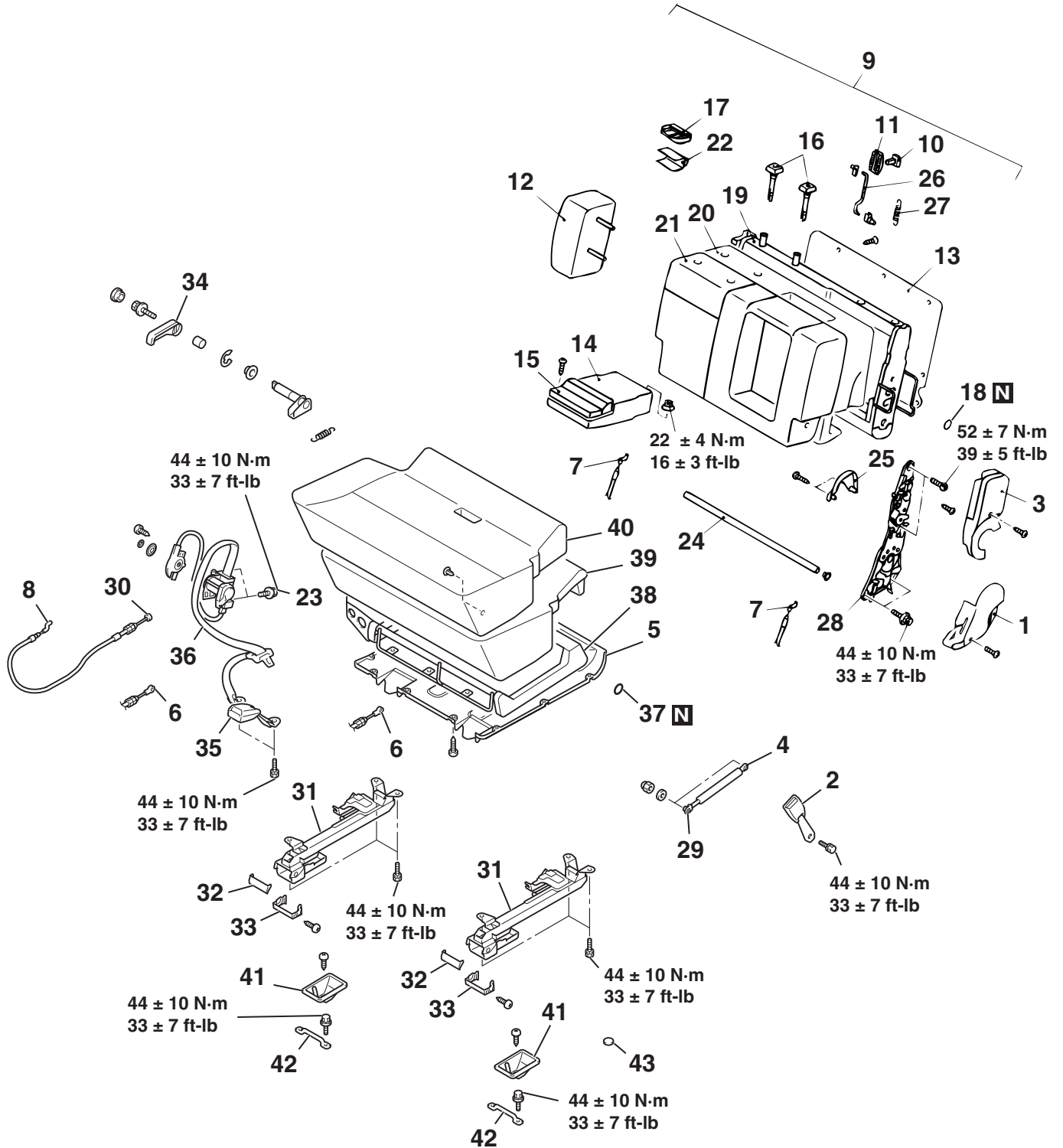


NOTE

↔ : CLAW POSITIONS

ACX00631AC

<RH SIDE>



AC006067AC

**DISASSEMBLY STEPS**

1. LOWER RECLINING ADJUSTER COVER
2. INNER SEAT BELT
3. CENTER RECLINING ADJUSTER COVER
4. GAS SPRING CONNECTION

**DISASSEMBLY STEPS**

5. SECOND SEAT CUSHION UNDER COVER
6. CATCH CABLE A CONNECTION
7. CATCH CABLE A
8. RECLINING CABLE CONNECTION
9. SECOND SEAT BACK ASSEMBLY

TSB Revision

**DISASSEMBLY STEPS**

10. FOLDING LEVER KNOB
11. FOLDING KNOB GARNISH
12. SECOND SEAT SIDE BACK ASSEMBLY
13. SECOND SEAT BACK BOARD
14. ARMREST
15. CUP HOLDER
16. HEAD RESTRAINT GUIDE
17. SASH ANCHOR GARNISH
18. HOG RING
19. SECOND SEATBACK FRAME
20. SECOND SEATBACK PAD
21. SECOND SEATBACK COVER
22. SEAT BELT PROTECTOR
23. CENTER SEAT BELT CONNECTION
24. SHAFT

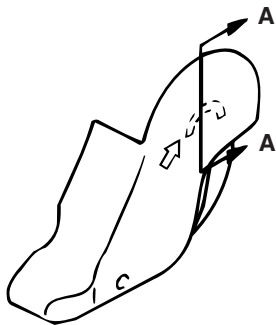
**DISASSEMBLY STEPS**

25. RECLINING ADJUSTER BACK COVER
26. ROD
27. SPRING
28. RECLINING ADJUSTER
29. GAS SPRING
30. RECLINING CABLE
31. SECOND SEAT CATCH ASSEMBLY
32. UPPER FOOT COVER
33. LOWER FOOT COVER
34. RECLINING KNOB
35. INNER SEAT BELT
36. CENTER SEAT BELT
37. HOG RING
38. SECOND SEAT CUSHION FRAME
39. SECOND SEAT CUSHION PAD
40. SECOND SEAT CUSHION COVER
41. STRIKER COVER
42. STRIKER
43. PLUG

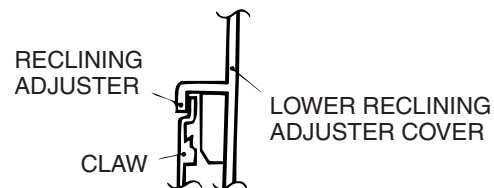
<<A>>

**CLAW POSITIONS**

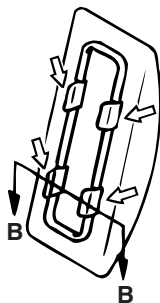
<LOWER RECLINING ADJUSTER COVER>



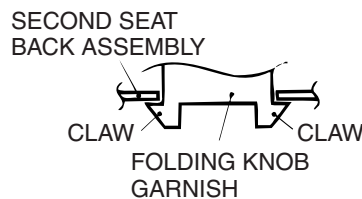
SECTION A - A



<FOLDING KNOB GARNISH>



SECTION B - B



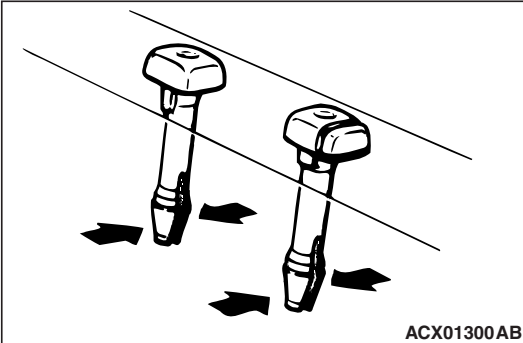
NOTE

↔ : CLAW POSITIONS

ACX00631AC

REMOVAL SERVICE POINTS

<<A>>HEAD RESTRAINT GUIDE REMOVAL

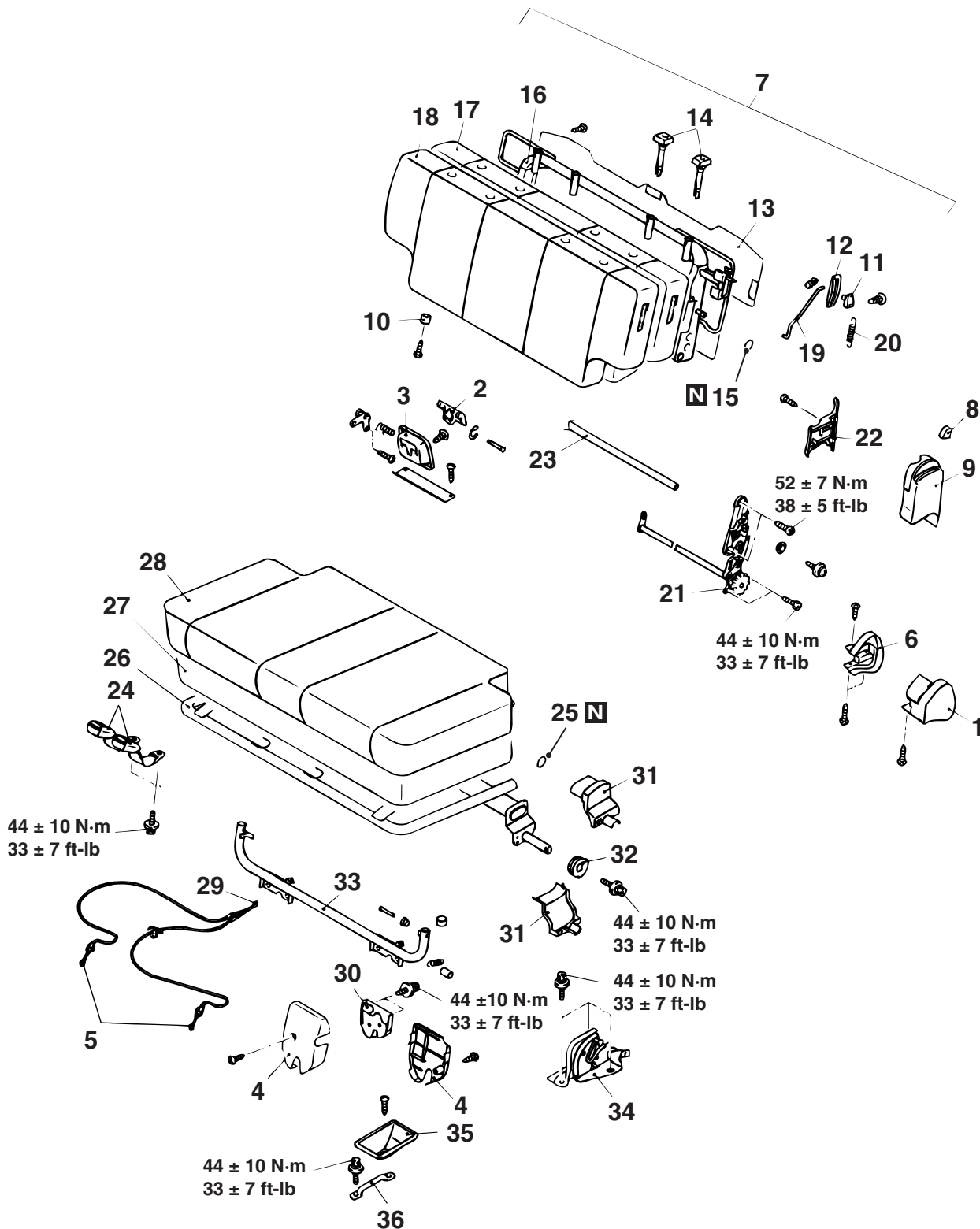




# THIRD SEAT ASSEMBLY

## DISASSEMBLY AND ASSEMBLY

M1522003000082



ACX00632 AD

**DISASSEMBLY STEPS**

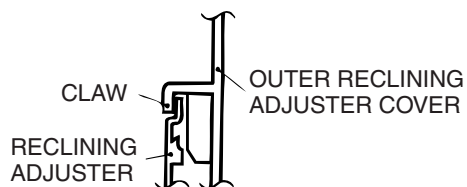
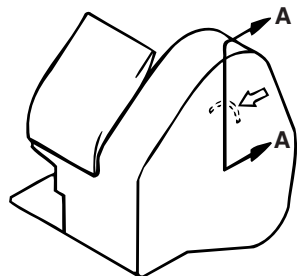
1. OUTER RECLINING ADJUSTER COVER
2. CATCH RELEASE KNOB
3. CATCH RELEASE KNOB GARNISH
4. LATCH COVER
5. CATCH CABLE CONNECTION
6. INNER RECLINING ADJUSTER COVER
7. THIRD SEATBACK ASSEMBLY
8. RECLINING KNOB
9. RECLINING ADJUSTER COVER
10. DAMPER
11. FOLDING LEVER KNOB
12. FOLDING KNOB GARNISH
13. THIRD SEATBACK BOARD
14. HEAD RESTRAINT GUIDE
15. HOG RING
16. THIRD SEATBACK FRAME
17. THIRD SEATBACK PAD

**DISASSEMBLY STEPS**

18. THIRD SEATBACK COVER
19. ROD
20. SPRING
21. RECLINING ADJUSTER
22. INNER RECLINING ADJUSTER COVER
23. SHAFT
24. INNER SEAT BELT
25. HOG RING
26. THIRD SEAT CUSHION FRAME
27. THIRD SEAT CUSHION PAD
28. THIRD SEAT CUSHION COVER
29. CATCH CABLE
30. THIRD SEAT LATCH
31. ARM COVER
32. CAM
33. THIRD SEAT LEG FRAME
34. CATCH ASSEMBLY
35. STRIKER COVER
36. STRIKER

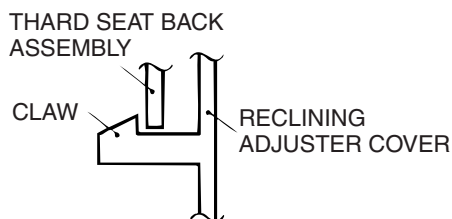
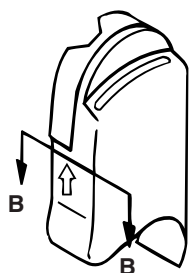
&lt;&lt;A&gt;&gt;

CLAW POSITIONS



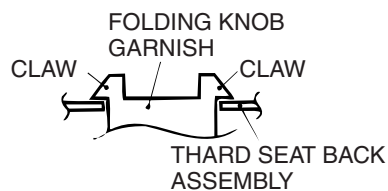
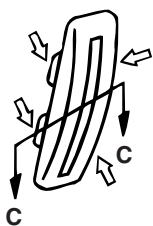
<RECLINING ADJUSTER COVER>

SECTION B - B



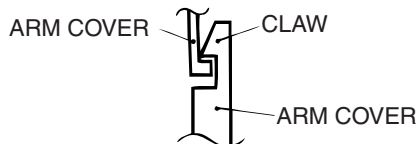
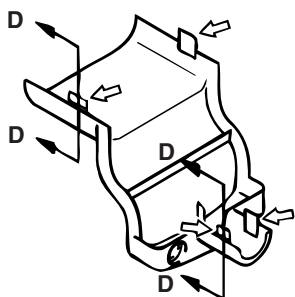
<FOLDING KNOB GARNISH>

SECTION C - C



<ARM COVER>

SECTION D - D

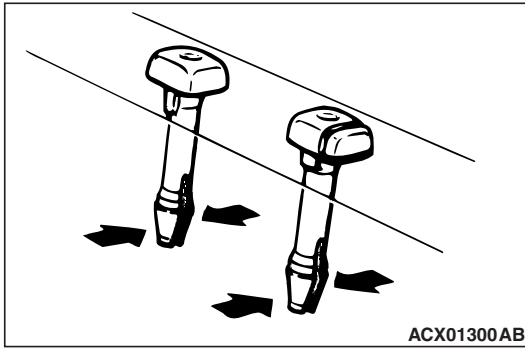


NOTE  
↔ : CLAW POSITIONS

ACX00633AC

## REMOVAL SERVICE POINT

## &lt;&lt;A&gt;&gt;HEAD RESTRAINT GUIDE REMOVAL



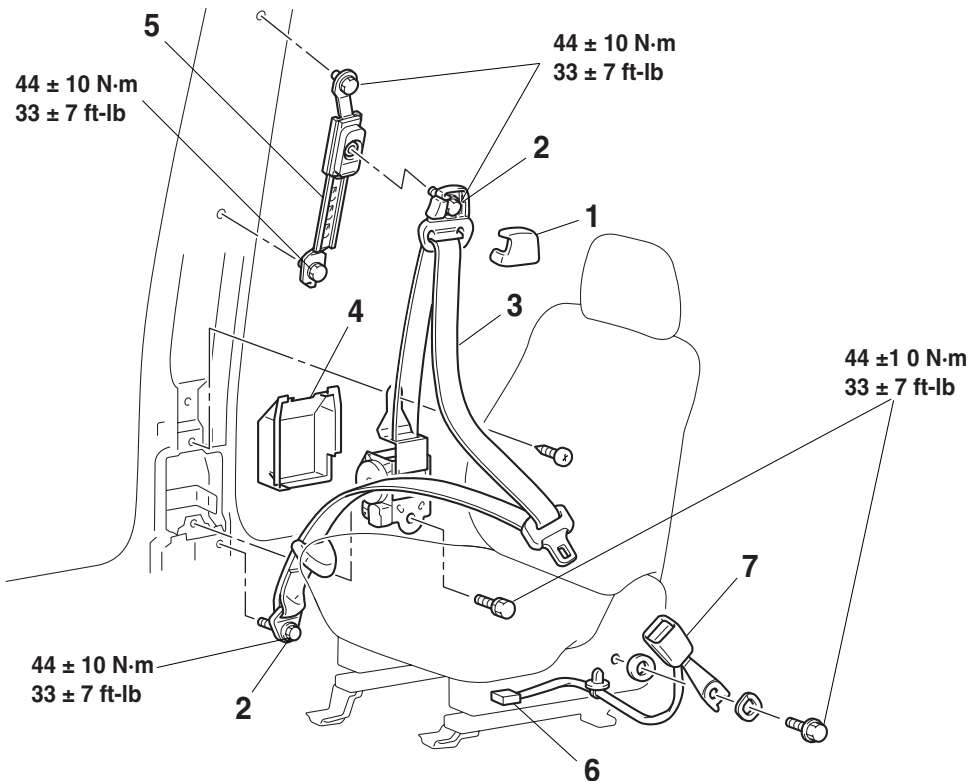
## FRONT SEAT BELT

## REMOVAL AND INSTALLATION

M1523001300585

**⚠ WARNING**

Before removing the outer seat belt, refer to **GROUP 52B-SRS, Service Precautions P.52B-18** and **Seat belts with Pretensioner P.52B-228**.



ACX00634AE

**OUTER SEAT BELT REMOVAL STEPS**

1. SASH GUIDE COVER
2. OUTER SEAT BELT CONNECTION
  - FRONT SCUFF PLATE, REAR SCUFF PLATE, LOWER CENTER PILLAR TRIM AND UPPER CENTER PILLAR TRIM (REFER TO [P.52A-8.](#))
3. OUTER SEAT BELT
4. FRONT NOISE PROTECTOR
5. ADJUSTABLE SEAT BELT ANCHOR

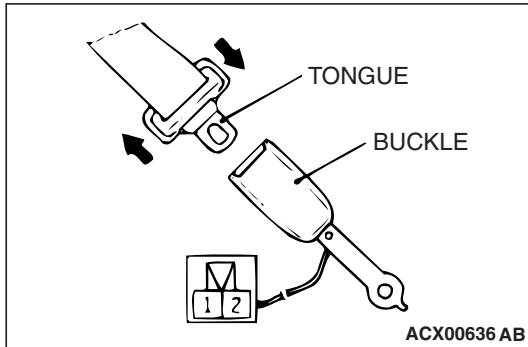
**INNER SEAT BELT REMOVAL STEPS**

- FRONT SEAT ASSEMBLY (REFER TO [P.52A-11.](#))
- HINGE COVER (REFER TO [P.52A-14.](#))
- 6. SEAT BELT SWITCH HARNESS CONNECTOR (DRIVER'S SIDE)
- 7. INNER SEAT BELT

INSPECTION

M1523004400150

SEAT BELT BUCKLE SWITCH CONTINUITY  
CHECK



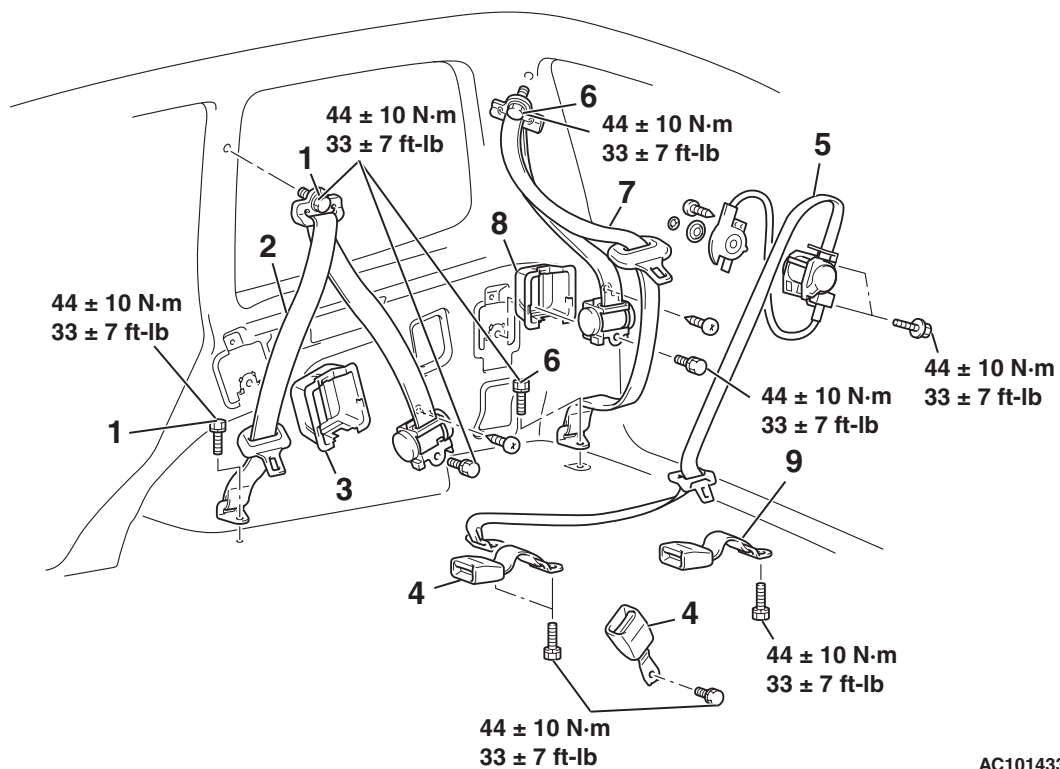
ITEM	TESTER CONNECTION	SPECIFIED CONDITION
Fastened seat belt	1 - 2	Open circuit
Unfastened seat belt	1 - 2	Less than 2 ohms

REAR SEAT BELT

REMOVAL AND INSTALLATION

SECOND SEAT BELT AND THIRD SEAT BELT

M1523001600393



AC101433AB

SECOND SEAT BELT REMOVAL  
STEPS

- LOWER QUARTER TRIM (REFER TO P.52A-8.)
- 1. OUTER SEAT BELT CONNECTION
- 2. OUTER SEAT BELT
- 3. ELR COVER

SECOND SEAT BELT REMOVAL  
STEPS (Continued)

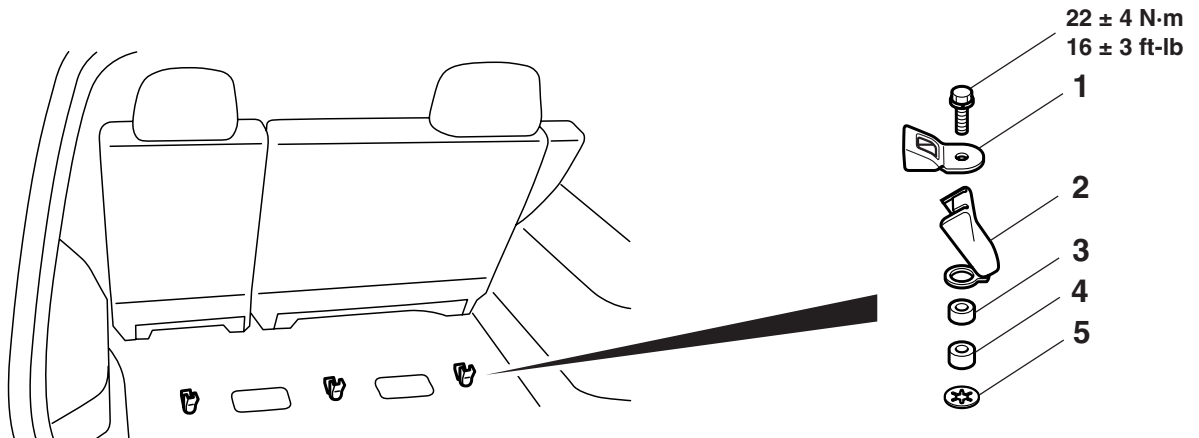
- 4. INNER SEAT BELT (REFER TO P.52A-20.)
- 5. CENTER SEAT BELT

**THIRD SEAT BELT REMOVAL  
STEPS**

- LOWER QUARTER TRIM (REFER TO [P.52A-8.](#))
- PILLAR DUCT (RH) (REFER TO GROUP 55A, VENTILATORS [P.55A-150.](#))

**THIRD SEAT BELT REMOVAL  
STEPS (Continued)**

- REAR BLOWER ASSEMBLY (REFER TO GROUP 55A, BLOWER ASSEMBLY [P.55A-129.](#))
- 6. OUTER SEAT BELT CONNECTION
- 7. OUTER SEAT BELT
- 8. ELR COVER
- 9. INNER SEAT BELT (REFER TO [P.52A-25.](#))

**TETHER ANCHOR****REMOVAL STEPS**

1. TETHER ANCHOR BRACKET
2. COVER
3. SPACER 5 mm (0.2 inch)

**REMOVAL STEPS (Continued)**

4. SPACER 10 mm (0.4 inch)
5. FIBER WASHER

ACX01774AD

## SPECIFICATIONS

### FASTENER TIGHTENING SPECIFICATIONS

M1521004100186

ITEM	SPECIFICATION
Armrest nut	22 ± 4 N·m (16 ± 3 ft-lb)
Catch assembly bolt	44 ± 10 N·m (33 ± 7 ft-lb)
Center seat belt bolt	44 ± 10 N·m (33 ± 7 ft-lb)
Front seatback frame bolt	44 ± 10 N·m (33 ± 7 ft-lb)
Front seat belt bolt	44 ± 10 N·m (33 ± 7 ft-lb)
Front seat bolt	44 ± 10 N·m (33 ± 7 ft-lb)
Front seat cushion frame bolt	21 ± 4 N·m (16 ± 2 ft-lb)
Front seat frame bolt	5 ± 1 N·m (44 ± 9 in-lb)
Front seat nut	30 ± 5 N·m (22 ± 4 ft-lb)
Hinge bracket lower bolt	13 ± 2 N·m (115 ± 18 in-lb)
Hinge bracket upper nut	12 ± 2 N·m (107 ± 17 in-lb)
Inner seat belt bolt	44 ± 10 N·m (33 ± 7 ft-lb)
Reclining adjuster lower bolt	44 ± 10 N·m (33 ± 7 ft-lb)
Reclining adjuster upper bolt	52 ± 7 N·m (38 ± 5 ft-lb)
Second seat bolt	44 ± 10 N·m (33 ± 7 ft-lb)
Second seat belt bolt	44 ± 10 N·m (33 ± 7 ft-lb)
Second seat catch assembly bolt	44 ± 10 N·m (33 ± 7 ft-lb)
Striker bolt	44 ± 10 N·m (33 ± 7 ft-lb)
Striker bolt	12 ± 2 N·m (107 ± 17 in-lb)
Tether anchor bolt	22 ± 4 N·m (16 ± 3 ft-lb)
Third seat belt bolt	44 ± 10 N·m (33 ± 7 ft-lb)
Third seat frame bolt	44 ± 10 N·m (33 ± 7 ft-lb)
Third seat latch bolt	44 ± 10 N·m (33 ± 7 ft-lb)

---

## NOTES