
POWER PLANT MOUNT

CONTENTS

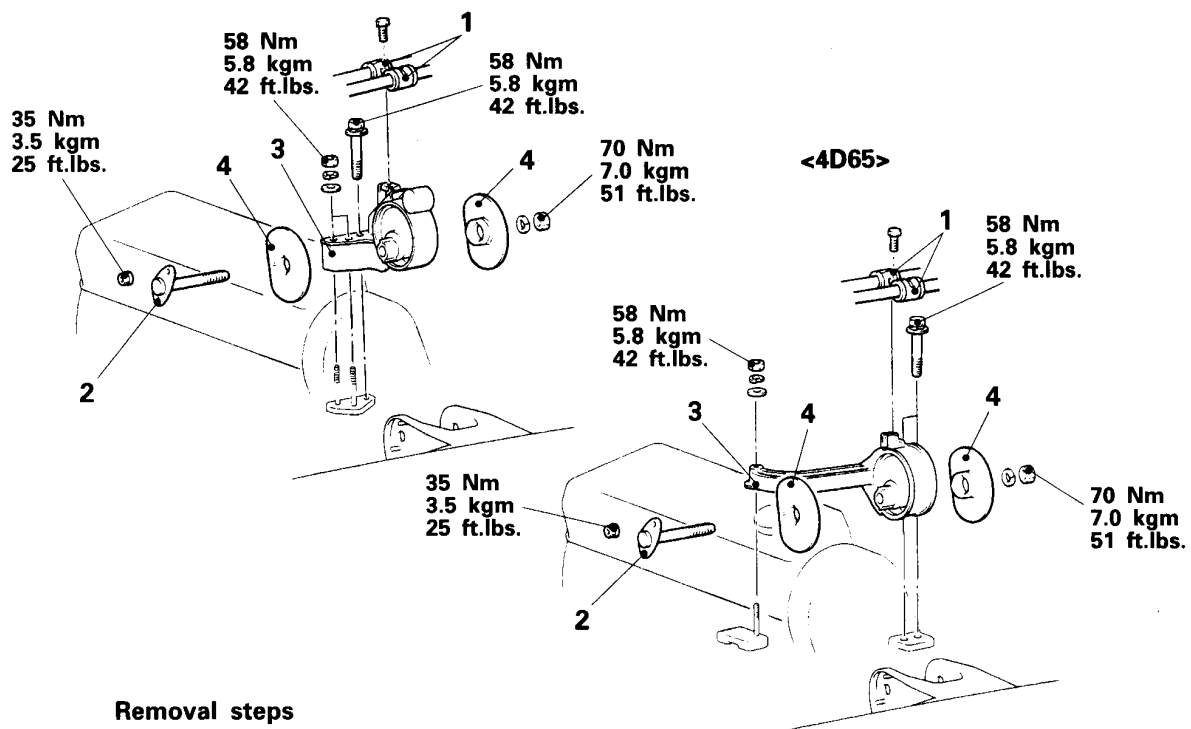
E32AA--

ENGINE MOUNTING	2	ENGINE ROLL STOPPER AND CENTERMEMBER	4
TRANSMISSION MOUNTING	3		

ENGINE MOUNTING

REMOVAL AND INSTALLATION

<Except for 4D65>

**Removal steps**

- Engine assembly support
- 1. Pressure hose (power steering) and low pressure hose (air conditioner)
- 2. Engine mount insulator mounting bolt
- 3. Engine mount bracket
- ◆◆ 4. Engine mount stopper

01C0101

SERVICE POINTS OF REMOVAL

E32JBAB

● **ENGINE ASSEMBLY SUPPORT**

Place a jack against the oil pan to support the engine assembly. At this time, insert a piece of wood between the jack and the engine oil pan to support the oil pan over a wide area.

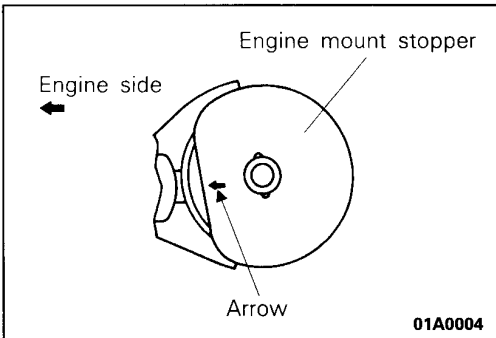
Caution

When supporting with a jack, be careful not to damage the oil pan.

INSPECTION

E32JCAB1

- Check each insulator for cracks or damage.
- Check each bracket for deformation or damage.



SERVICE POINTS OF INSTALLATION

E32JDCB

4. INSTALLATION OF ENGINE MOUNT STOPPER

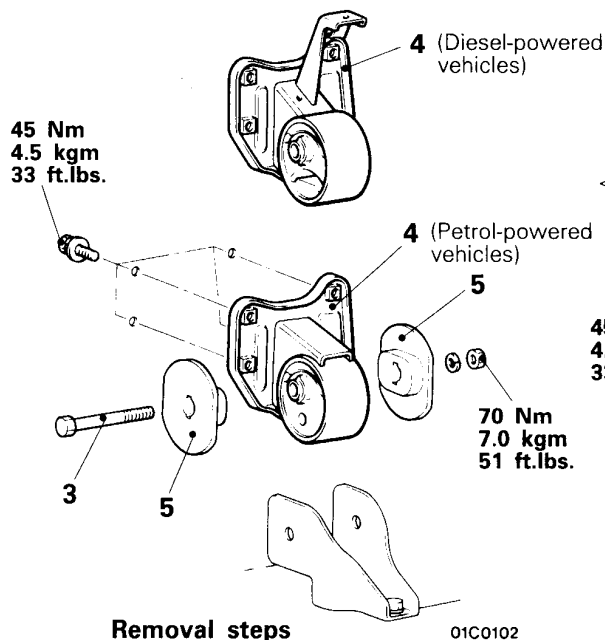
Install the engine mount stopper of the engine mount bracket so that the arrow faces the centre part of the engine.

TRANSMISSION MOUNTING

E32KA--

REMOVAL AND INSTALLATION

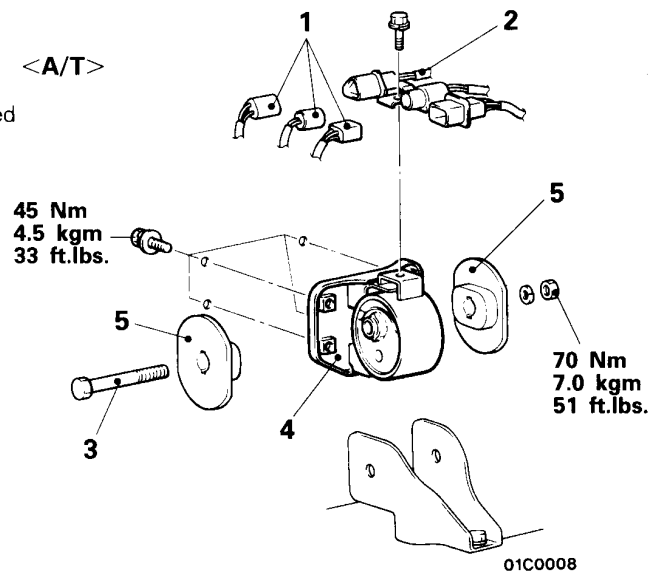
<M/T>



Removal steps

1. Harness connector
2. Connector bracket
3. Transmission mount insulator mounting bolt
4. Transmission mount bracket
5. Transmission mount stopper

<A/T>



Pre-removal Operation

- Jack up the engine transmission assembly so that the weight is taken off the engine mounts.
- Removal of the Air Cleaner

Post-installation Operation

- Installation of the Air Cleaner

INSPECTION

E32JCAB2

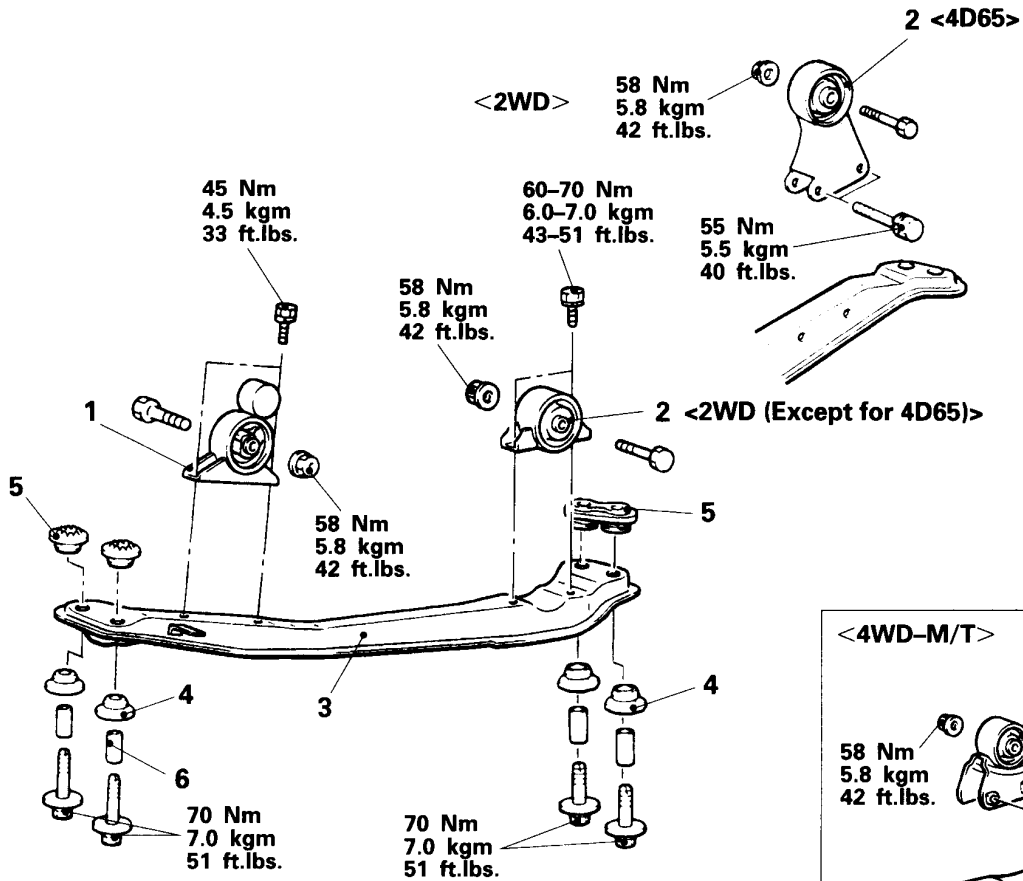
- Check each insulator for cracks or damage.
- Check each bracket for deformation or damage.

ENGINE ROLL STOPPER AND CENTERMEMBER

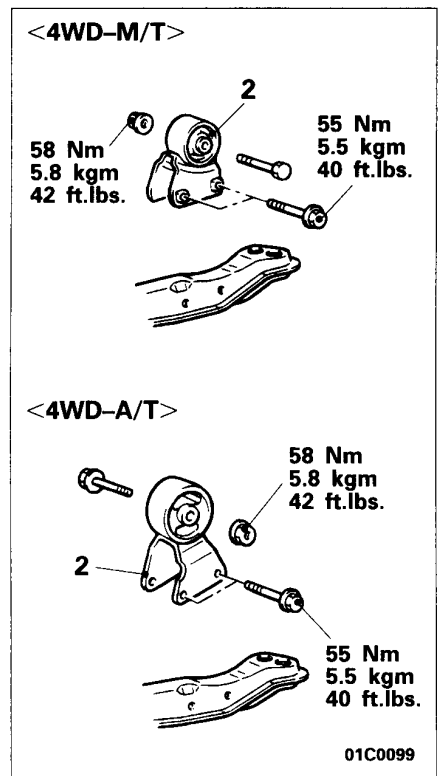
REMOVAL AND INSTALLATION

Pre-removal and Post-installation Operation

- Removal and Installation of Under Cover Side Panel



01C0098



01C0099

Removal of engine roll stopper

- ➡➡ 1. Front roll stopper bracket
- ➡➡ 2. Rear roll mount bracket

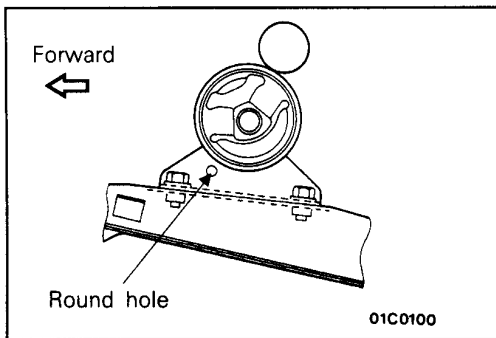
Removal of centermember

- 3. Centermember
- 4. Lower bushing
- 5. Upper bushing
- 6. Collar

INSPECTION

E32JCAB3

- Check each insulator for cracks or damage.
- Check each bracket for deformation or damage.

**SERVICE POINTS OF INSTALLATION****1. INSTALLATION OF FRONT ROLL STOPPER BRACKET**

Install the front roll stopper bracket so that the part where the round hole is made is facing the front of the vehicle.