

INTERIOR

CONTENTS

E52AA--

SPECIAL TOOLS	2	REAR SEAT <SPACE RUNNER>	16
INSTRUMENT PANEL*	2	SECOND SEAT <SPACE WAGON>	17
FLOOR CONSOLE*	6	THIRD SEAT <SPACE WAGON>	18
TRIMS <SPACE RUNNER>	7	FRONT SEAT BELT	19
TRIMS <SPACE WAGON>	10	REAR SEAT BELT <SPACE RUNNER>	20
HEADLINING	12	SECOND SEAT BELT <SPACE WAGON> .	21
FRONT SEAT	14	THIRD SEAT BELT <SPACE WAGON>	21

WARNINGS REGARDING SERVICING OF SUPPLEMENTAL RESTRAINT SYSTEM (SRS) EQUIPPED VEHICLES

WARNING!

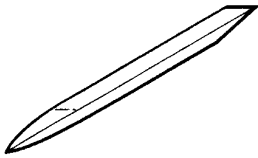
- (1) Improper service or maintenance of any component of the SRS, or any SRS-related component, can lead to personal injury or death to service personnel (from inadvertent firing of the air bag) or to the driver and passenger (from rendering the SRS inoperative).
- (2) Service or maintenance of any SRS component or SRS-related component must be performed only at an authorized MITSUBISHI dealer.
- (3) MITSUBISHI dealer personnel must thoroughly review this manual, and especially its GROUP 52B – Supplemental Restraint System (SRS), before beginning any service or maintenance of any component of the SRS or any SRS-related component.

NOTE

The SRS includes the following components: SRS diagnosis unit, SRS warning lamp, air bag module, clock spring, and inter-connecting wiring. Other SRS-related components (that may have to be removed/installed in connection with SRS service or maintenance) are indicated in the table of contents by an asterisk (*).

SPECIAL TOOLS

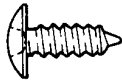

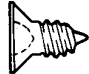


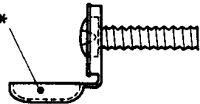
E52DA-

Tool	Number	Name	Use
	MB990784	Ornament remover	Removal of switch, trim, etc.

INSTRUMENT PANEL

E52GAAL

For installation of the instrument panel, the bolts and screws described below are used. They are indicated by symbols in the illustration.

Name	Symbol	Size mm (in.) (D×L)	Colour	Shape
Tapping screw	A	5×16 (0.20×0.62)	–	 18C0039
	B	5×16 (0.20×0.62)	Black	
	C	5×20 (0.20×0.79)	Black	 18U0415
	D	5×12 (0.20×0.47)	Black	 18C0039
Washer assembled screw	E	5×16 (0.20×0.62)	–	 18C0039
	F	5×16 (0.20×0.62)	Black	 18C0039
	G	5×20 (0.20×0.79)	–	 18C0039

NOTE

*: the same colour with interior

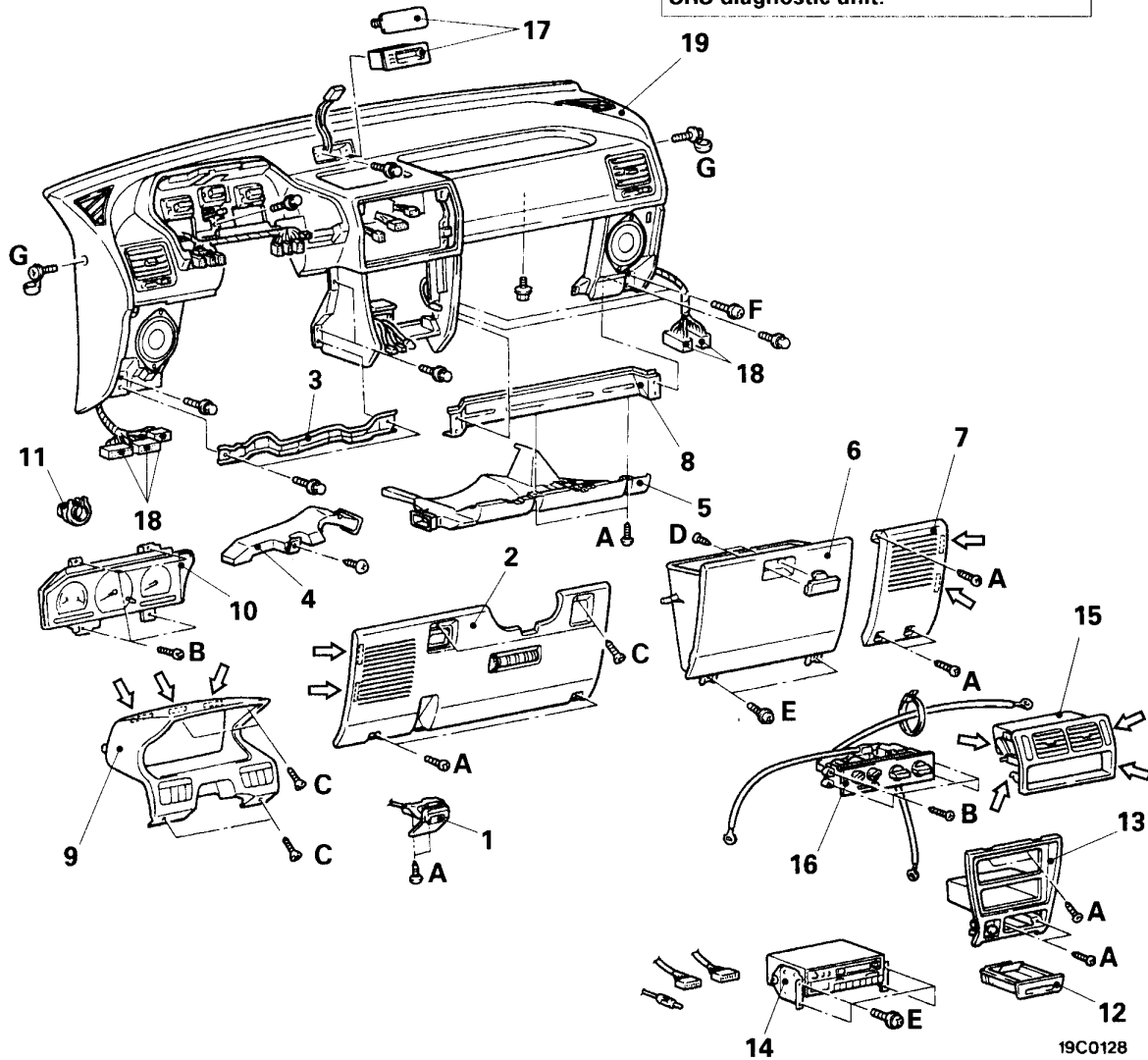
REMOVAL AND INSTALLATION

Pre-removal and Post-installation Operation

- Floor Console Assembly Removal and Installation (Refer to P. 52A-6.)

CAUTION: SRS

When removing and installing the floor console from vehicles equipped with SRS, do not let it bump against the SRS diagnostic unit.



Removal steps

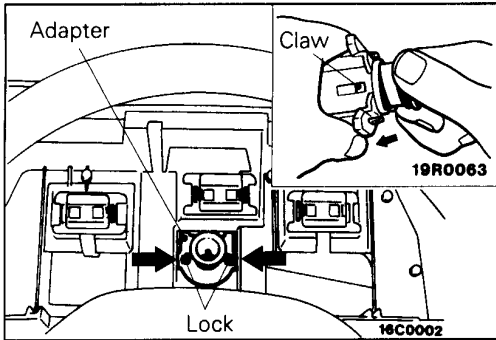
1. Hood lock release handle
2. Instrument under cover
3. Lower frame
4. Foot duct
5. Lap heater duct
6. Glove box
7. Speaker garnish
8. Glove box frame
9. Meter hood

10. Combination meter
11. Adapter
12. Ashtray
13. Center panel
14. Radio or audio
15. Center air outlet assembly
16. Heater control assembly
17. Clock or plug
18. Harness connector
19. Instrument panel assembly

NOTE

← : metal clip position

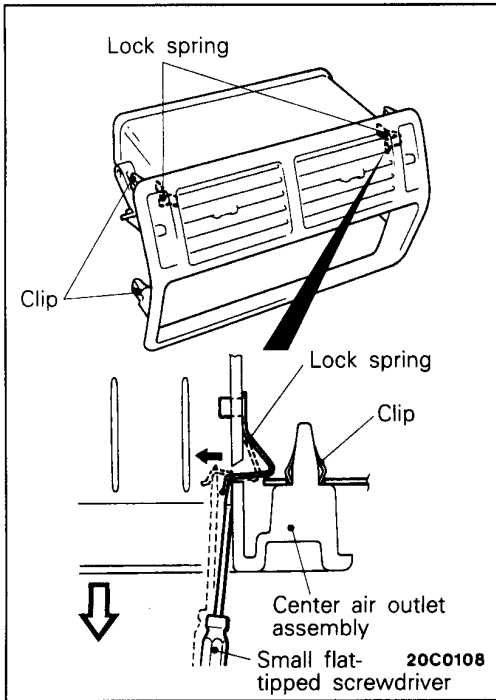
19C0128

**SERVICE POINTS OF REMOVAL**

E52GCBA

11. REMOVAL OF ADAPTOR

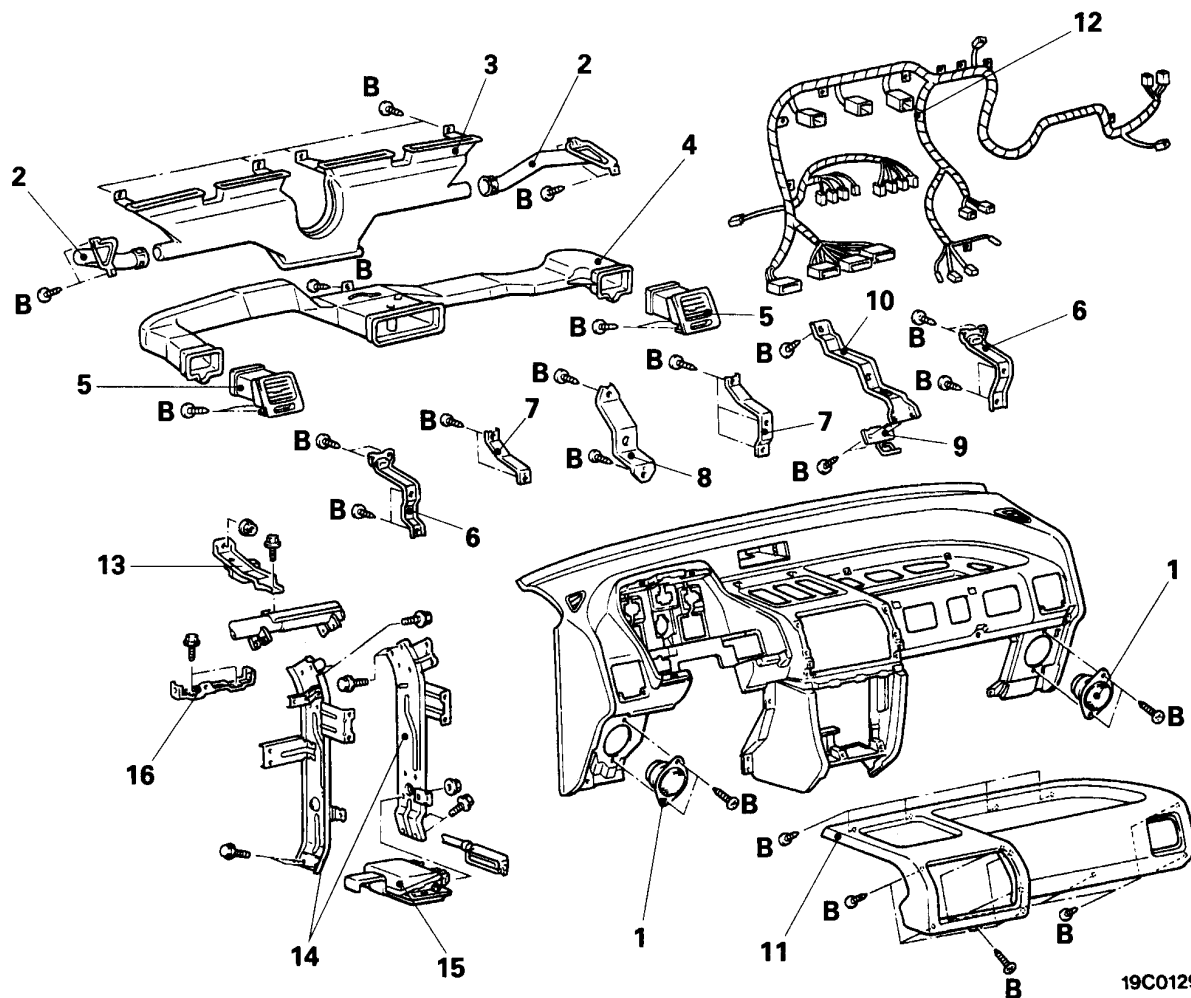
- (1) Remove the adaptor lock.
- (2) Pull the speedometer cable slightly into the passenger compartment, and then remove the rear of the adaptor from the cable .
- (3) After turning the adaptor so that the notched section is aligned with the tab on the cable section, remove the adaptor by sliding it in the reverse direction.

**15. REMOVAL OF CENTER AIR OUTLET ASSEMBLY**

- (1) First remove the clip on the lower section of the center air outlet assembly.
- (2) Insert a small flat-tipped screwdriver in between the fins, and remove the clip on the top section while pulling the lock spring toward the inside.
- (3) Take out the center air outlet assembly.

DISASSEMBLY AND REASSEMBLY

E52GF--



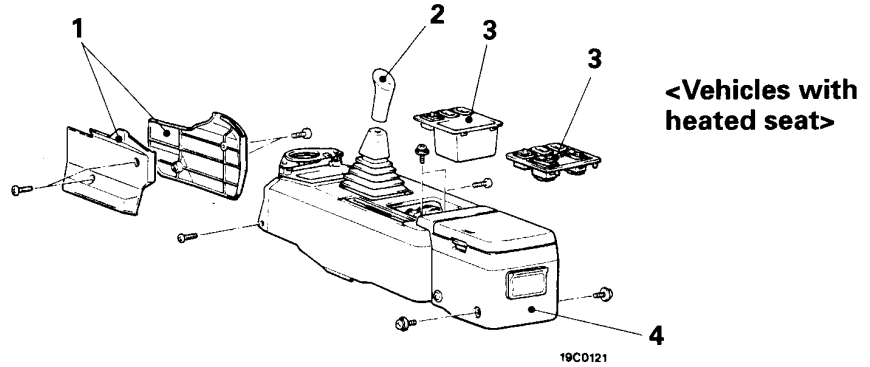
19C0129

Removal steps

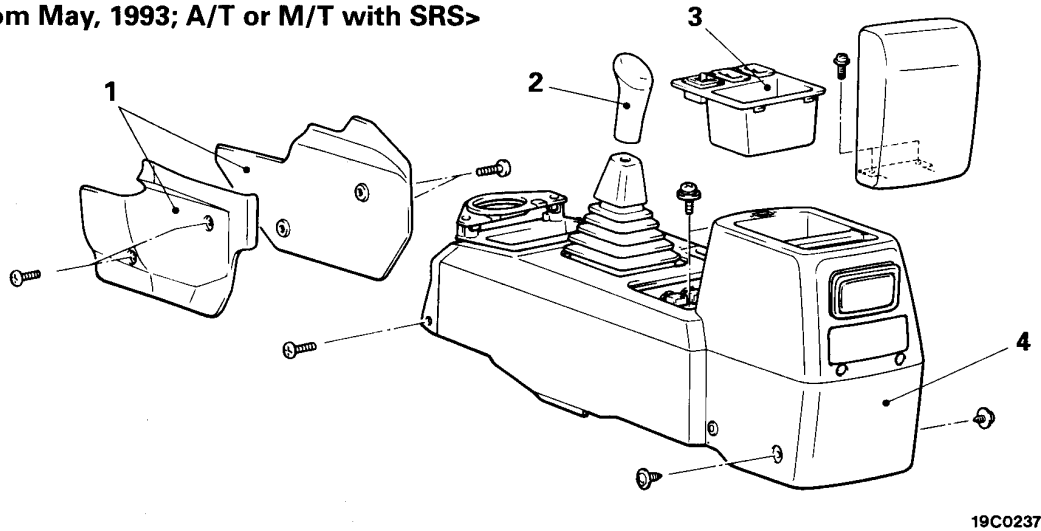
1. Speaker
2. Side defroster duct
3. Defroster nozzle assembly
4. Distribution duct
5. Side air outlet assembly
6. Bracket
7. Defroster reinforcement
8. Center bracket
9. Glove box striker
10. Glove box reinforcement
11. Instrument pad
12. Instrument panel wiring harness
13. Cross pipe
14. Center reinforcement
15. A.B.S. control unit assembly
16. Side cover bracket

FLOOR CONSOLE**REMOVAL AND INSTALLATION**

<Up to April, 1993> <From May, 1993; M/T without SRS>



<From May, 1993; A/T or M/T with SRS>

**Removal steps**

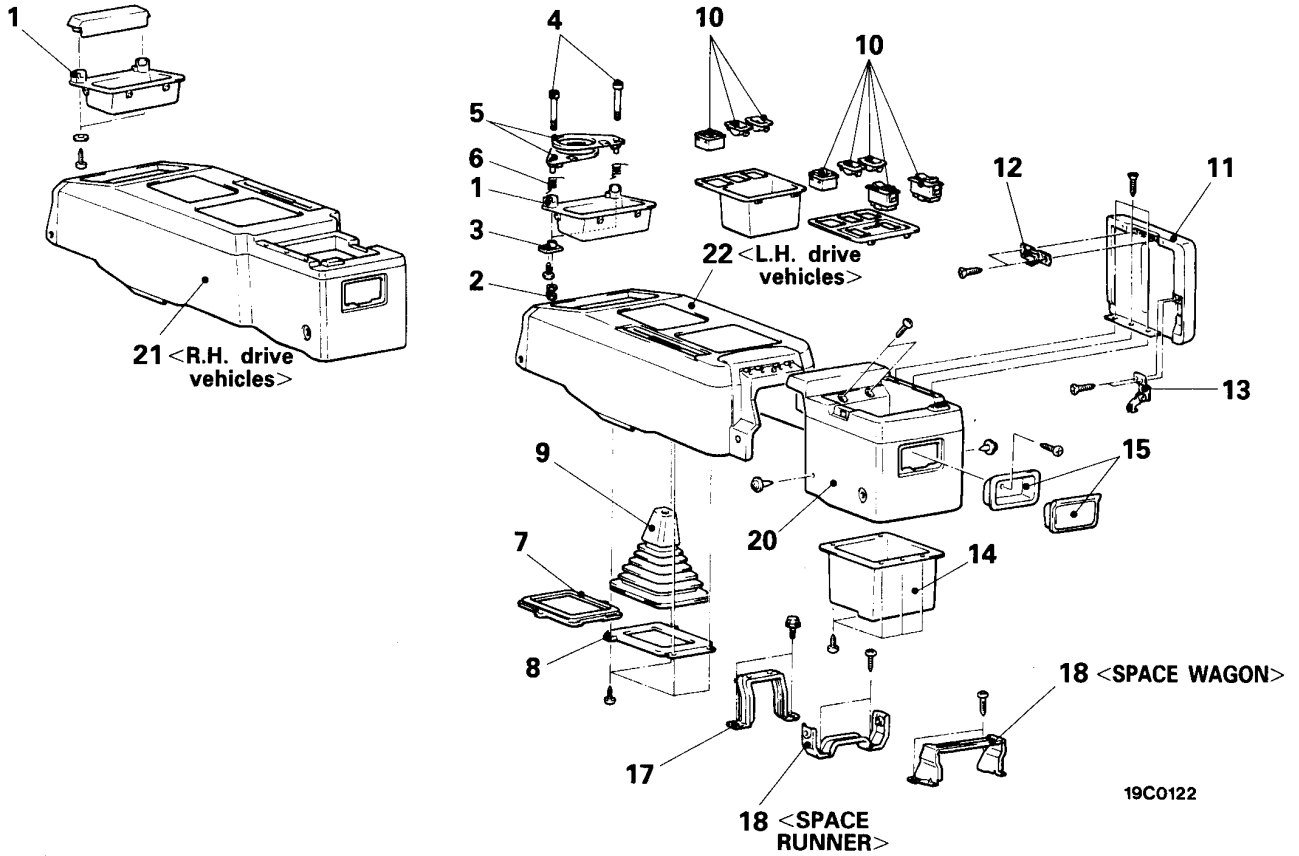
1. Side cover
2. Shift lever knob
3. Floor console switch panel
4. Floor console assembly

CAUTION: SRS:

When removing and installing the floor console assembly from vehicles equipped with SRS, do not let it bump against the SRS diagnostic unit or other components.

DISASSEMBLY AND REASSEMBLY

<Up to April, 1993> <From May, 1993 ; M/T without SRS>

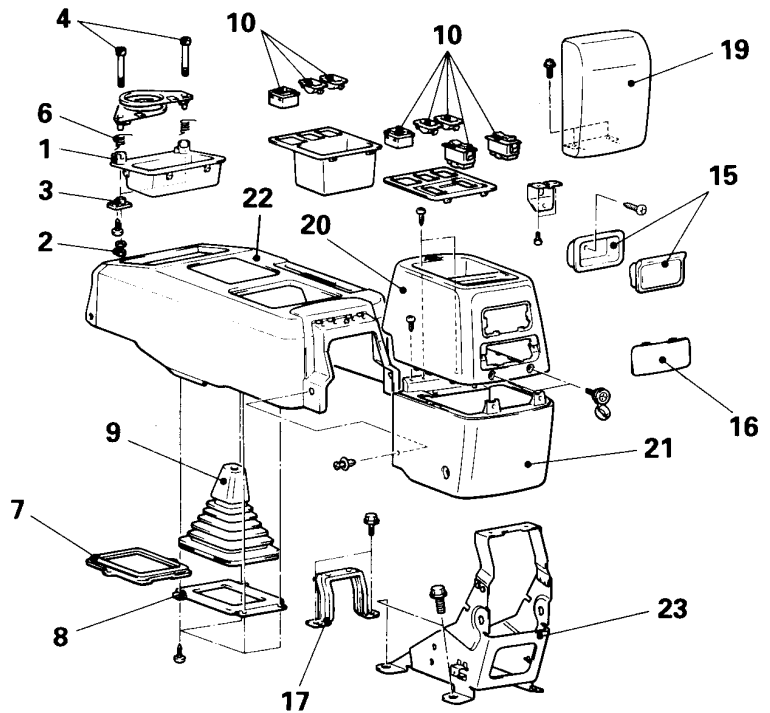


19C0122

Disassembly steps

1. Box
2. Nut
3. Damper assembly
4. Bolt
5. Cup holder
6. Spring
7. Space <A/T>
8. Shift lever panel
9. Shift lever boot
10. Remote controlled mirror switch, coin holder, heated seat switch
11. Lid assembly
12. Lock lever
13. Stopper
14. Box
15. Ashtray
16. Plug
17. Console bracket A
18. Console bracket C
19. Armrest
20. Rear console upper
21. Rear console lower
22. Floor console
23. Rear console bracket

<From May 1993; A/T or M/T with SRS>



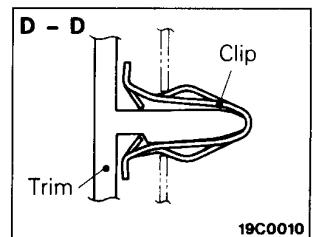
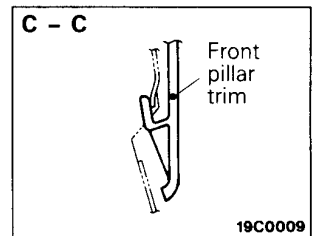
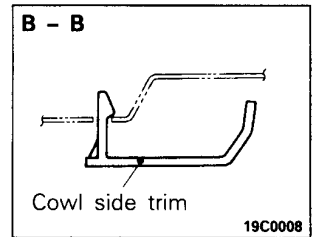
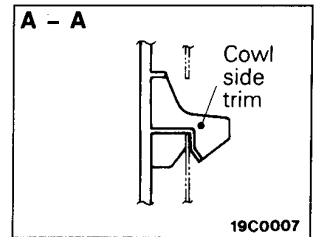
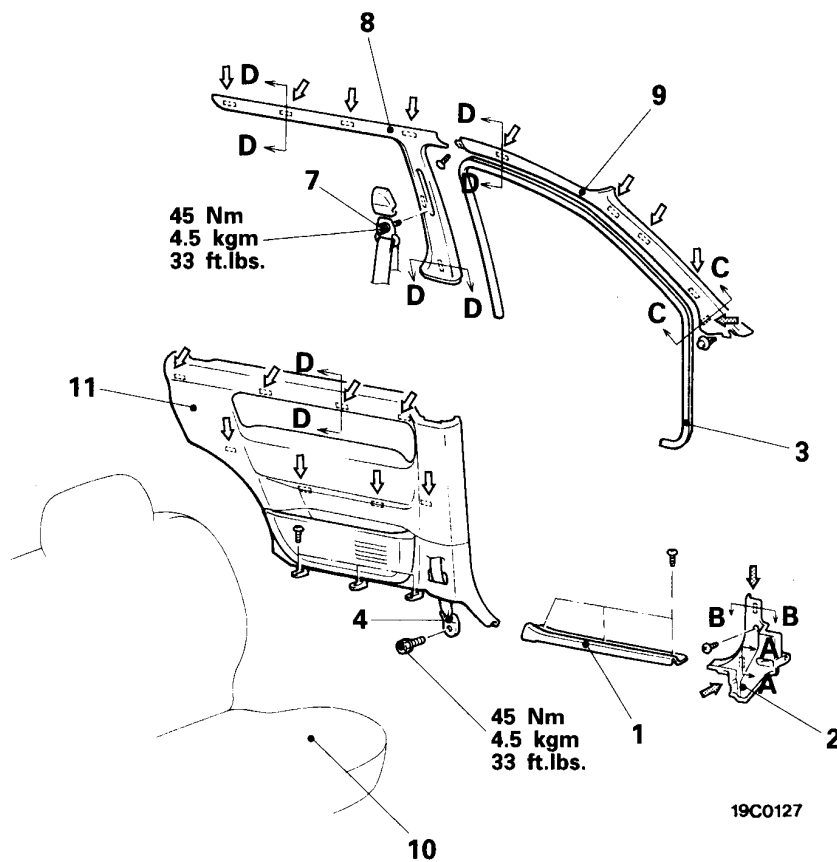
19C0235

52A-6-2

NOTES

TRIMS <SPACE RUNNER>

REMOVAL AND INSTALLATION



Cowl side trim removal steps

1. Front scuff plate
2. Cowl side trim

Front door opening trim removal steps

1. Front scuff plate
3. Front door opening trim

Front pillar trim removal steps

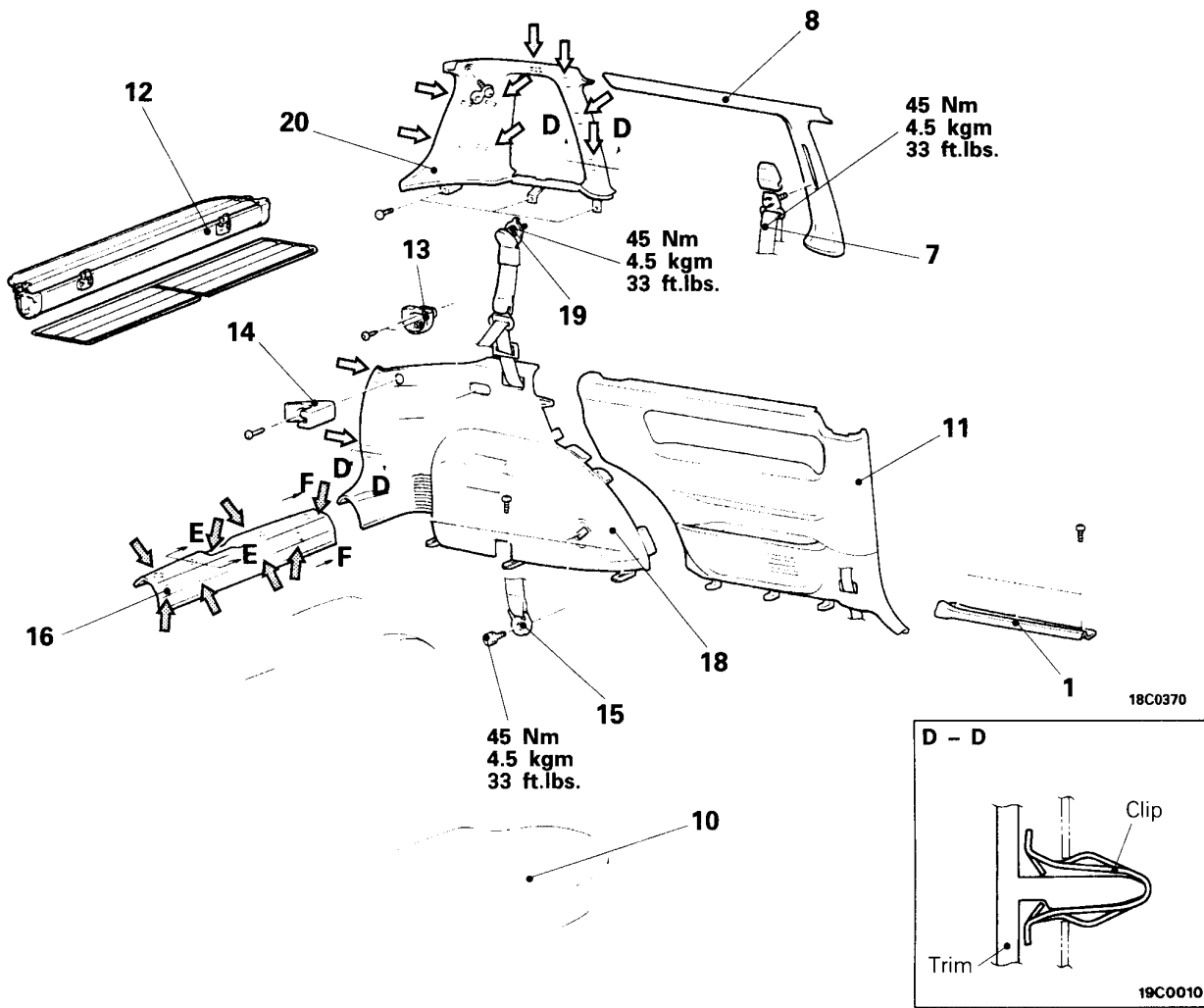
7. Front seat belt sash guide
8. Center pillar upper trim
9. Front pillar trim

Quarter lower trim removal steps

4. Front seat belt anchor plate
10. Rear seat assembly (Refer to P.52A-16.)
11. Quarter lower trim

NOTE

- (1) : metal clip position
 (2) : resin clip position

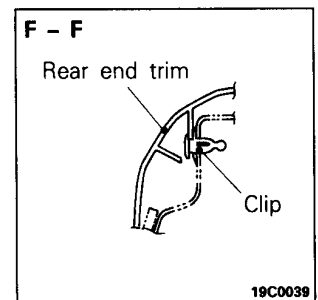
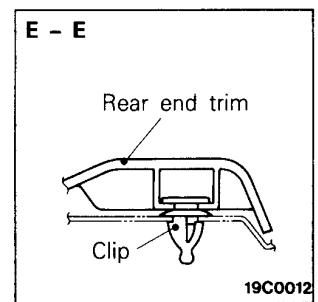
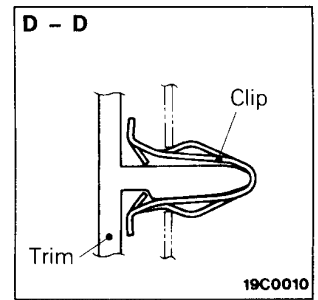


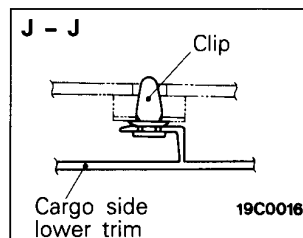
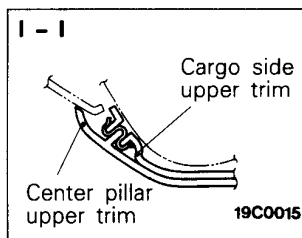
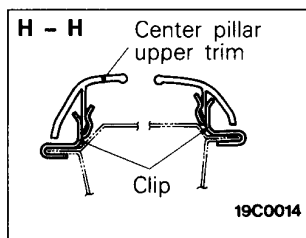
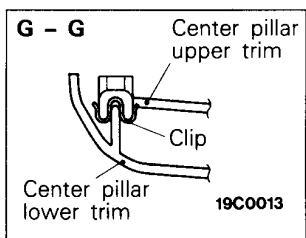
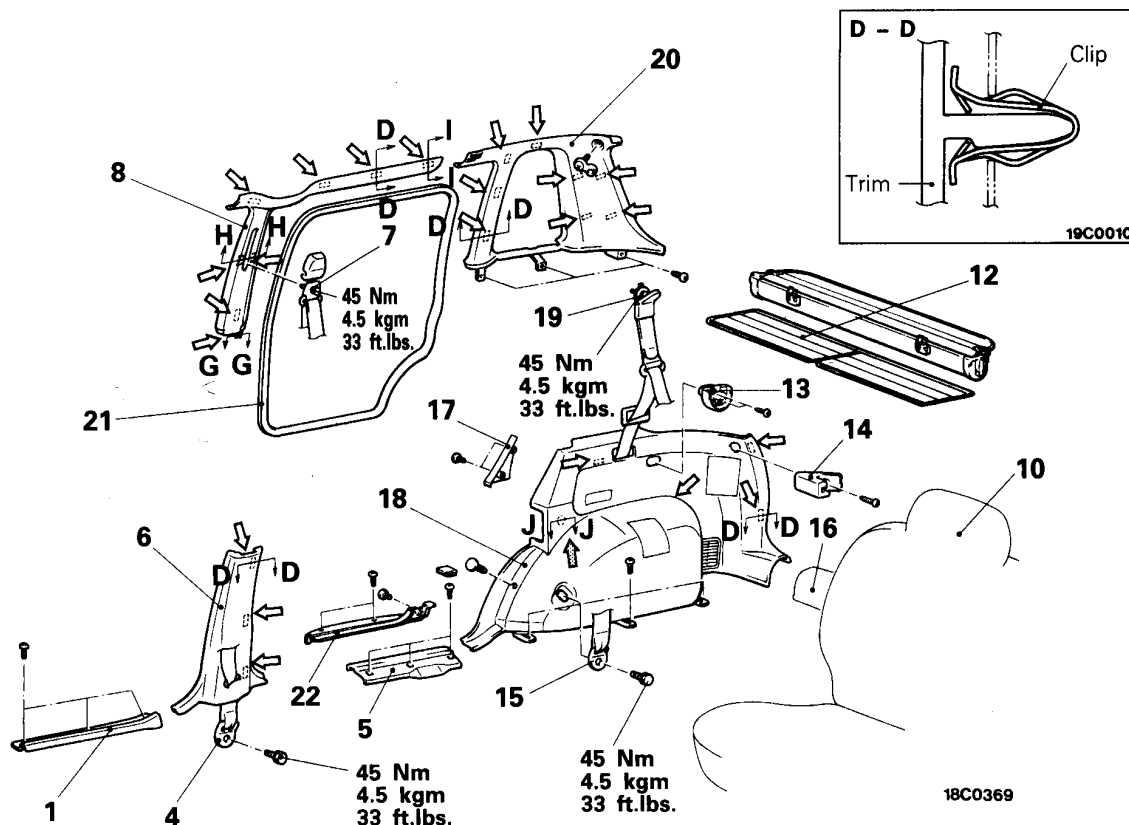
Cargo side trim removal steps

1. Front scuff plate
7. Front seat belt sash guide
8. Center pillar upper trim (Refer to P.52A-7.)
10. Rear seat assembly (Refer to P.52A-16.)
11. Quarter lower trim (Refer to P.52A-7.)
12. Rear shelf
13. Front holder
14. Rear holder
15. Rear seat belt anchor plate
16. Rear end trim
18. Cargo side lower trim
19. Rear seat belt sash guide
20. Cargo side upper trim

NOTE

- (1) : metal clip position
 (2) : resin clip position





Cargo side trim removal steps

1. Front scuff plate
4. Front seat belt anchor plate
5. Rear scuff plate
6. Center pillar lower trim
7. Front seat belt sash guide
8. Center pillar upper trim
10. Rear seat assembly
(Refer to P. 52A-16.)
12. Rear shelf
13. Front holder
14. Rear holder
15. Rear seat belt anchor plate
16. Rear end trim
17. Back trim
18. Cargo side lower trim
19. Rear seat belt sash guide
20. Cargo side upper trim

Rear door opening trim removal steps

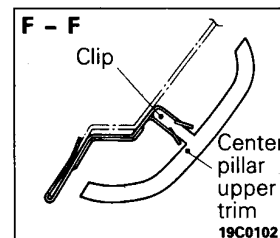
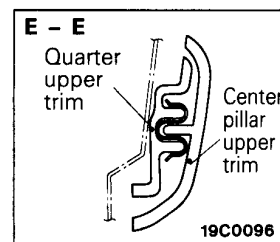
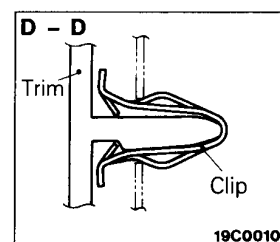
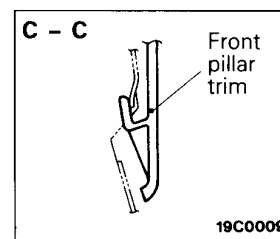
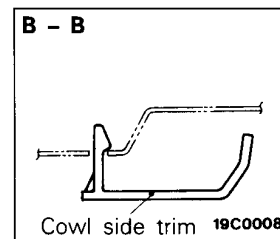
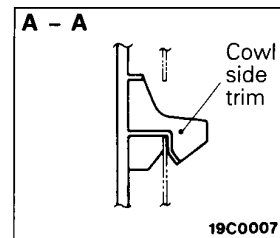
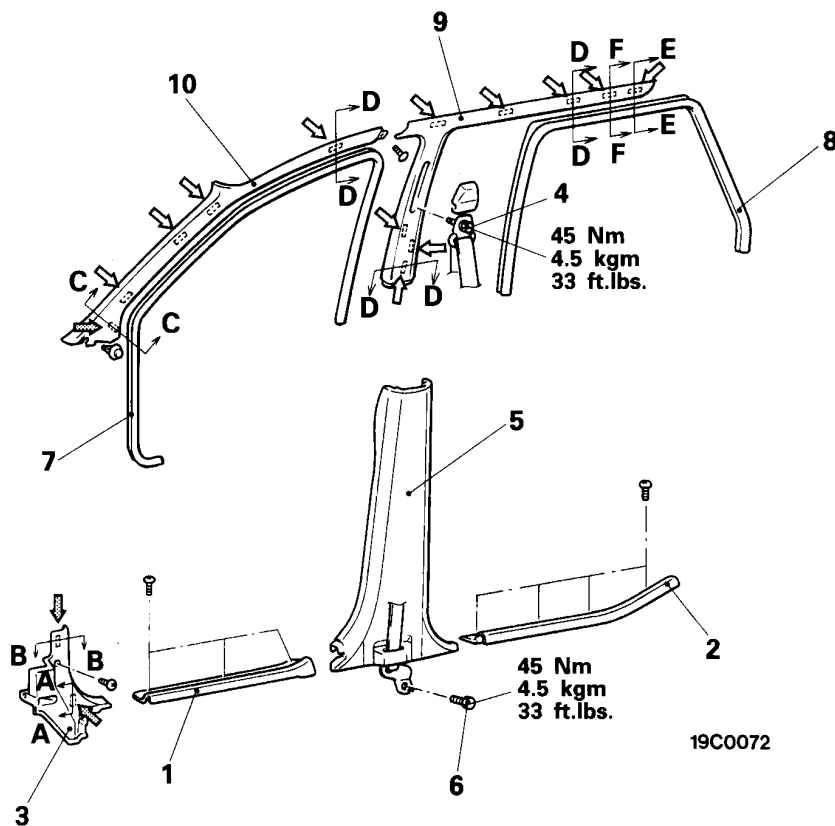
1. Front scuff plate
4. Front seat belt anchor plate
5. Rear scuff plate
6. Center pillar lower trim
10. Rear seat assembly
(Refer to P.52A-16.)
12. Rear shelf
13. Front holder
14. Rear holder
15. Rear seat anchor plate
16. Rear end trim
17. Back trim
18. Cargo side lower trim
21. Rear door opening trim
22. Slide door rail cover

NOTE
 (1) ← : metal clip position
 (2) ← : resin clip position

TRIMS <SPACE WAGON>

E52JA-B

REMOVAL AND INSTALLATION



Cowl side trim removal steps

1. Front scuff plate
3. Cowl side trim

Door opening trim removal steps

1. Front scuff plate
2. Rear scuff plate
5. Center pillar lower trim
7. Front door opening trim
8. Rear door opening trim

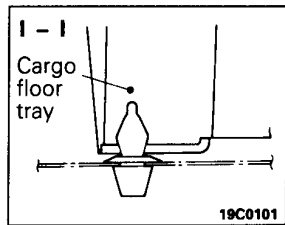
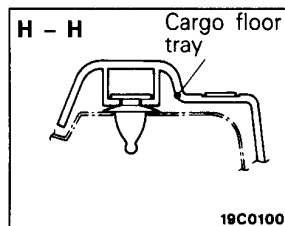
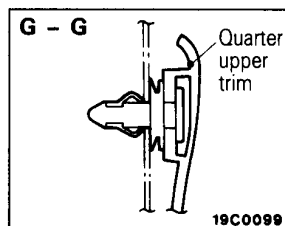
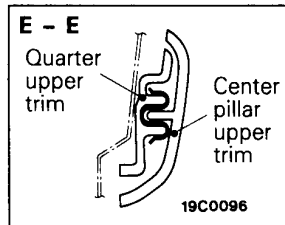
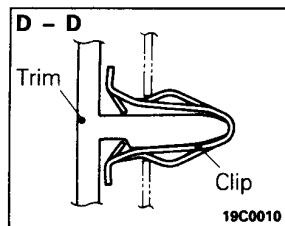
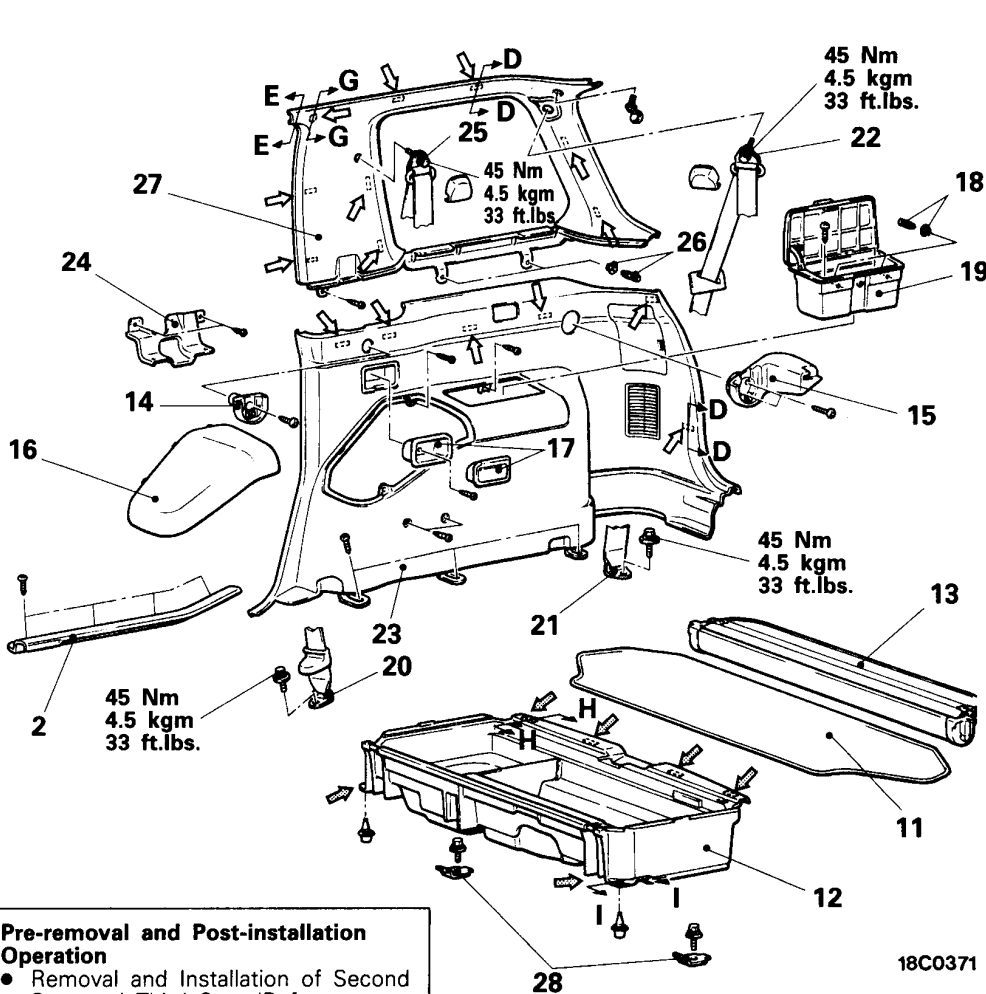
Front pillar trim removal steps

4. Front seat belt sash guide
9. Center pillar upper trim
10. Front pillar trim

Center pillar trim removal steps

1. Front scuff plate
2. Rear scuff plate
4. Front seat belt sash guide
5. Center pillar lower trim
6. Front seat belt anchor plate
9. Center pillar upper trim
10. Front pillar trim

NOTE
 (1) ← : metal clip position
 (2) ⇐ : resin clip position



Pre-removal and Post-installation Operation
 • Removal and Installation of Second Seat and Third Seat (Refer to P.52A-16, 18.)

Quarter trim removal steps

2. Rear scuff plate
11. Cargo floor board assembly
12. Cargo floor tray
13. Rear shelf
14. Front holder
15. Rear holder
16. Garnish
17. Ashtray
18. Clip
19. Quarter trim box
20. Second seat belt anchor plate
21. Third seat belt anchor plate
22. Third seat belt sash guide
23. Quarter lower trim
24. Pocket bracket
25. Second seat belt sash guide
26. Clip
27. Quarter upper trim

Cargo floor tray removal steps

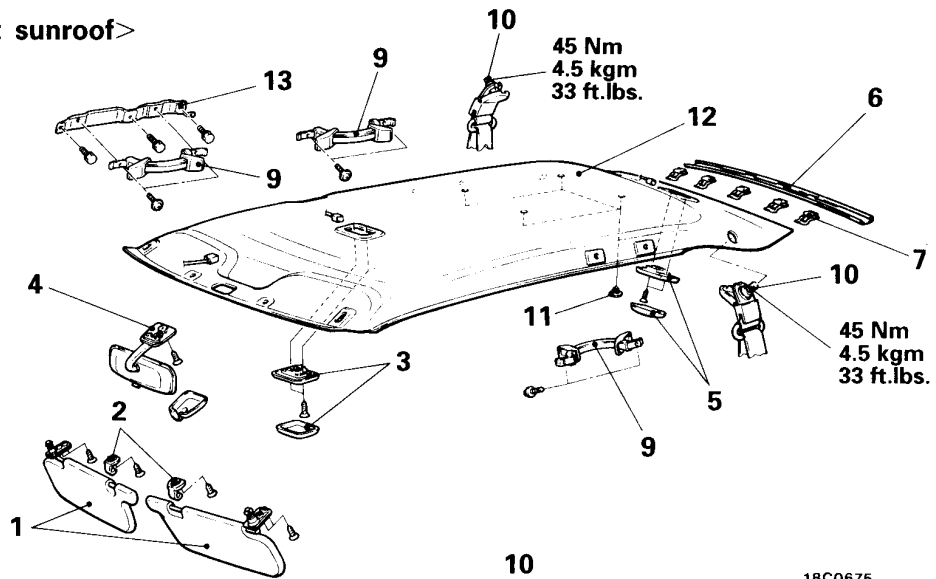
11. Cargo floor board assembly
12. Cargo floor tray
28. Parcel strap

NOTE
 (1) ← : metal clip position
 (2) ← : resin clip position

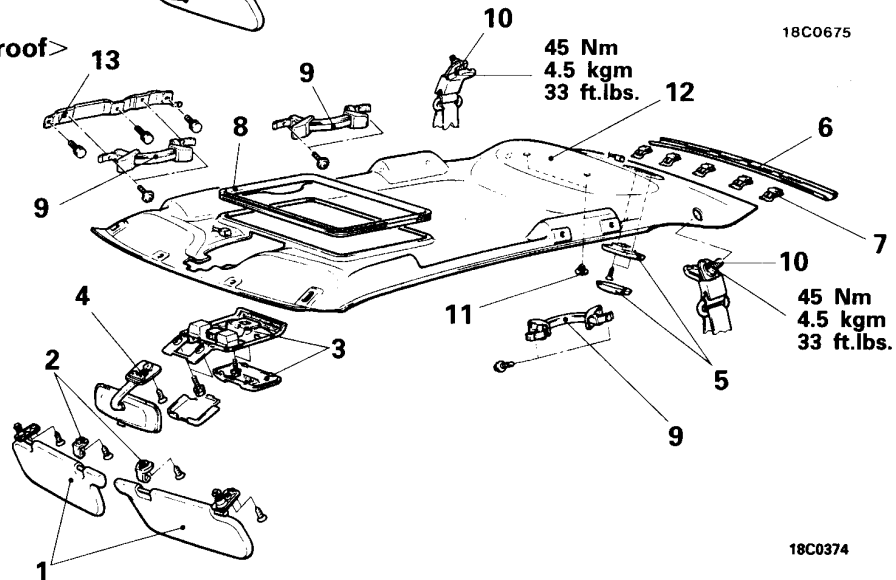
HEADLINING

REMOVAL AND INSTALLATION <SPACE RUNNER>

<Vehicles without sunroof>



<Vehicles with sunroof>



Pre-removal and Post-installation Operation

- Removal and Installation of Front Pillar Trim and Center Pillar Trim, Cargo Side Upper Trim (Refer to P.52A-7 to 9.)

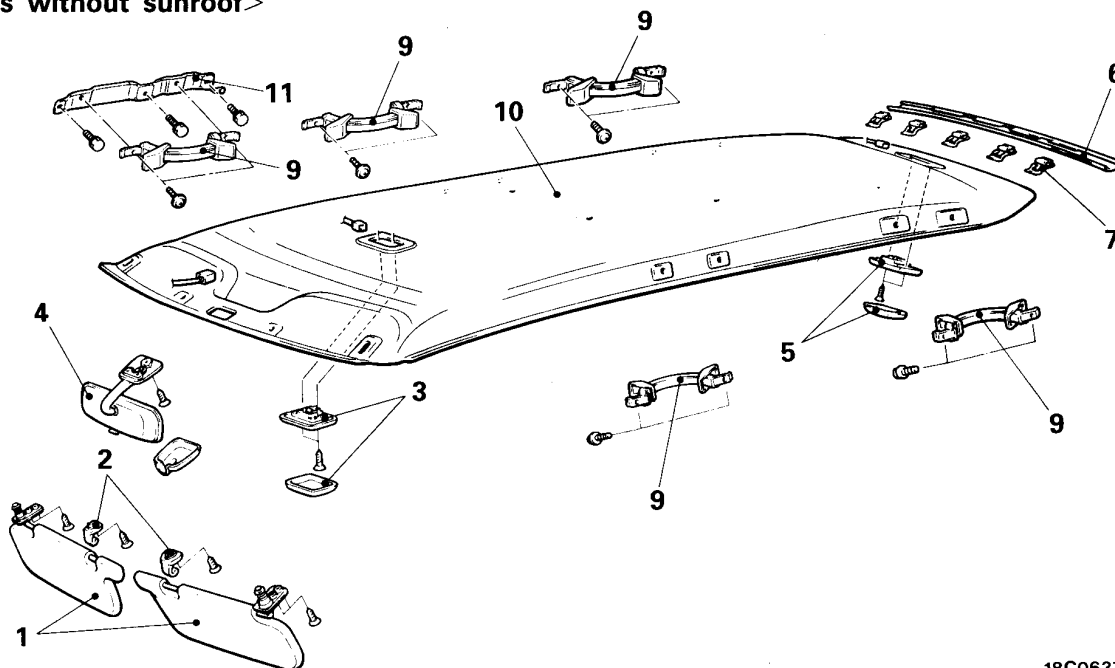
Removal steps

- | | |
|-------------------------------|-------------------------------|
| 1. Sunvisor assembly | 7. Clip |
| 2. Sunvisor holder | 8. Headlining trim |
| 3. Room lamp assembly (Front) | 9. Assist grip |
| 4. Room mirror | 10. Rear seat belt sash guide |
| 5. Room lamp assembly (Rear) | 11. Clip |
| 6. Headlining rear trim | 12. Headlining |
| | 13. Assist grip bracket |

REMOVAL AND INSTALLATION <SPACE WAGON>

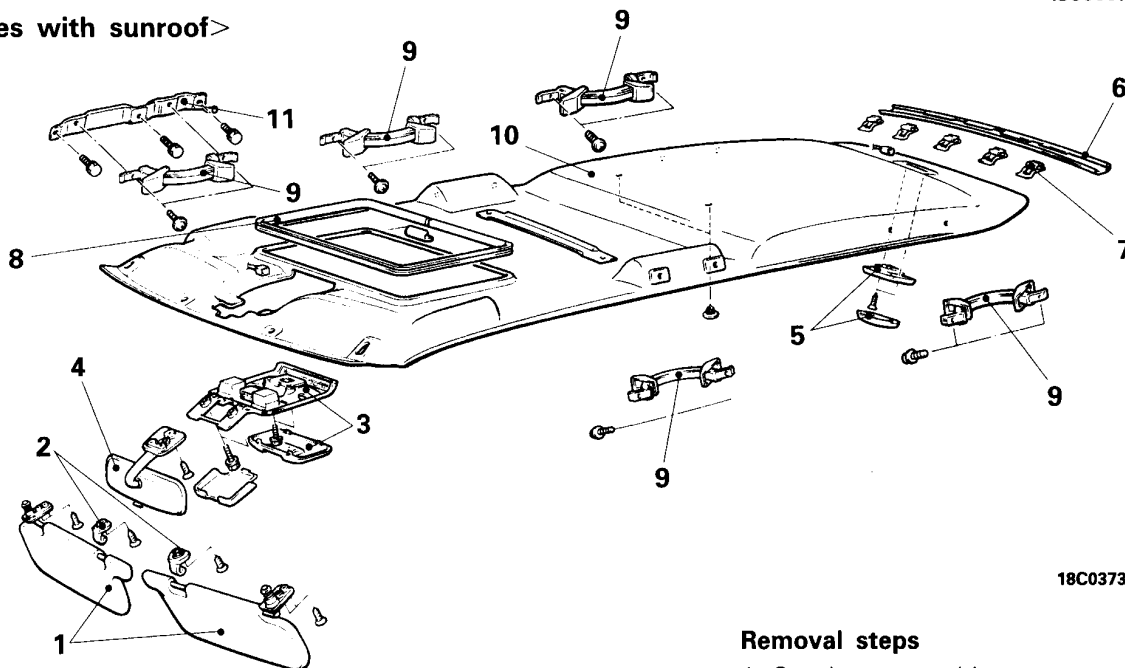
E52IA-B

<Vehicles without sunroof>



18C0637

<Vehicles with sunroof>



18C0373

Pre-removal and Post-installation Operation

- Removal and Installation of Front Pillar Trim and Center Pillar, Cargo Side Upper Trim (Refer to P.52A-10 to 11.)

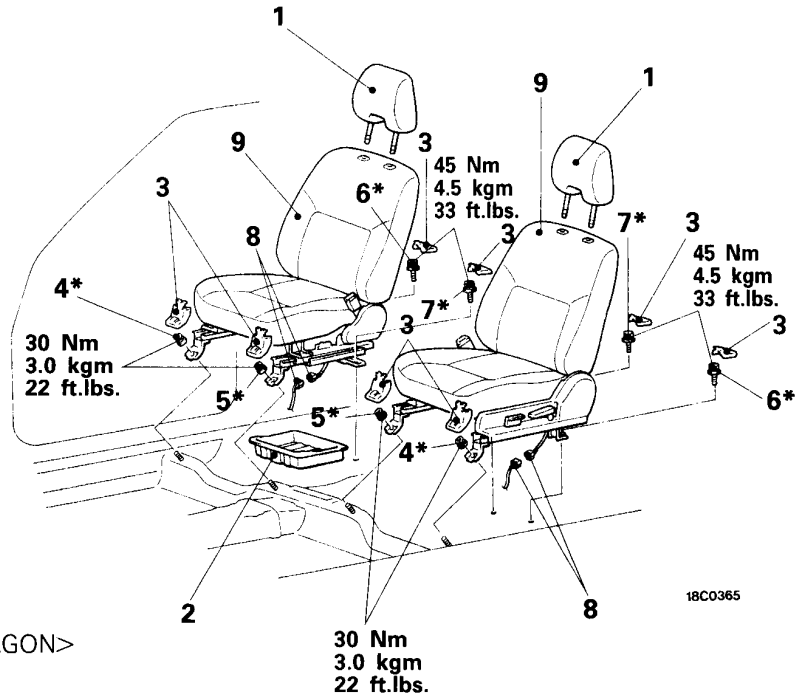
Removal steps

1. Sunvisor assembly
2. Sunvisor holder
3. Room lamp assembly (Front)
4. Room mirror
5. Room lamp assembly (Rear)
6. Headlining rear trim
7. Clip
8. Headlining trim
9. Assist grip
10. Headlining
11. Assist grip bracket

FRONT SEAT

E52KA-A

REMOVAL AND INSTALLATION

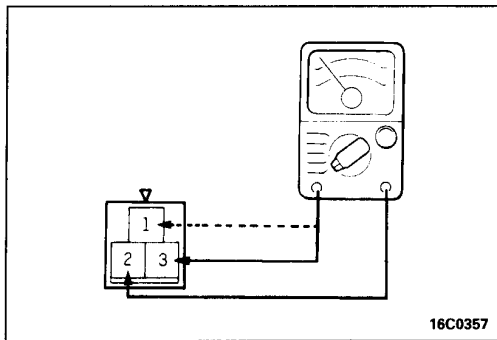


- 1. Headrest
- 2. Seat under-tray <SPACE WAGON>

Front seat removal steps

- 3. Seat
- 4. Nuts
- 5. Nuts
- 6. Bolts
- 7. Bolts
- 8. Harness connector
- 9. Front seat assembly

NOTE
After provisionally tightening the nuts and bolts marked with a * in all locations, tighten them to the specified torque.



INSPECTION

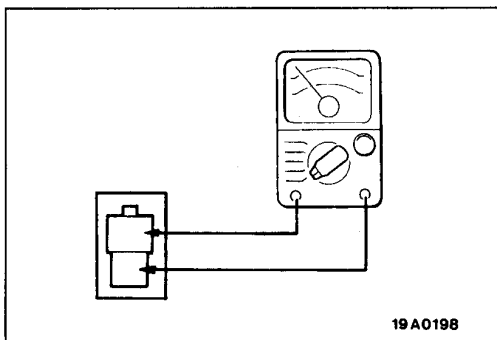
E52KDBAa

SEAT CUSHION HEATER

Measure the resistance between terminals 2 and 3 and between 1 and 3.

Standard value:

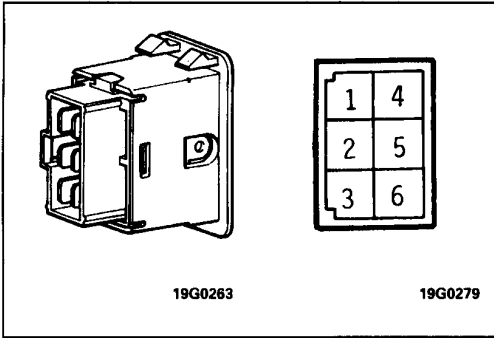
Between terminals 2 and 3 Approx. 6.5 Ω
Between terminals 1 and 3 0 Ω



SEATBACK HEATER

Measure the resistance between terminals.

Standard value: Between terminals Approx. 7 Ω



HEATED SEAT SWITCH

E52KGAC

Operate the switch to check continuity between terminals.

Terminal No.	5	2	3	4	1	-	6
Switch position							
HI		○—○	○—○	○—○	○—○	○—○	○—○
LO		○—○	○—○	○—○	○—○	○—○	○—○

NOTE

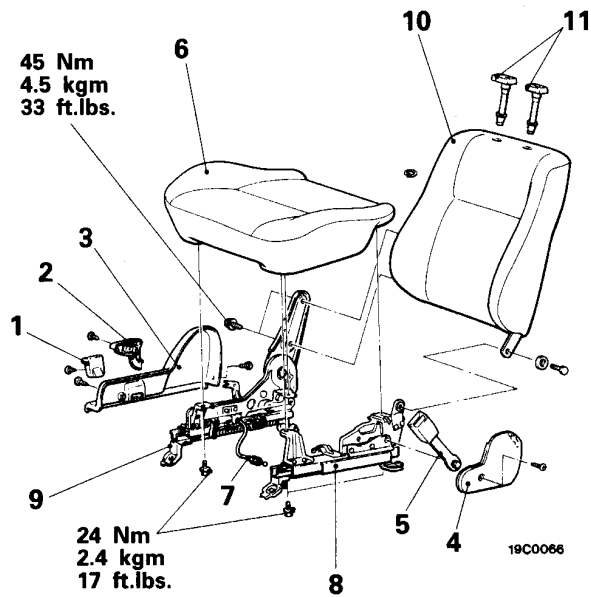
○—○ indicates there is continuity between the terminals.

DISASSEMBLY AND REASSEMBLY

E52KE-A

Disassembly steps

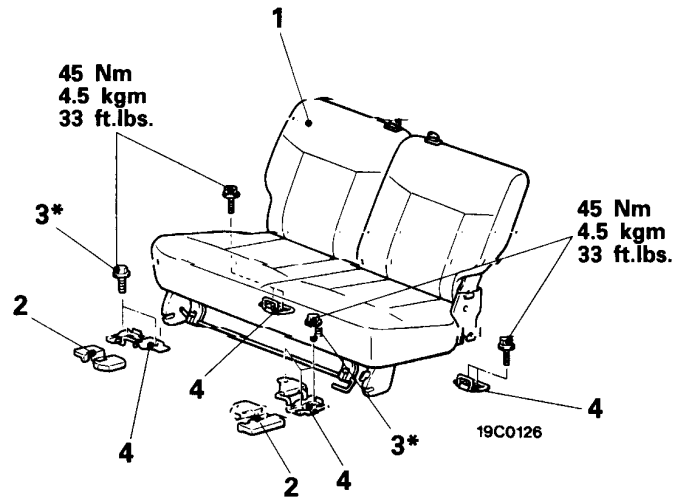
1. Slide adjuster knob
2. Reclining adjuster knob
3. Front seat side shield cover
4. Front seat hinge cover
5. Inner seat belt
6. Seat cushion assembly
7. Cable connection
8. Seat inner adjuster
9. Seat outer adjuster
10. Seat back assembly
11. Headrest guide



REAR SEAT <SPACE RUNNER>

E52KA-B

REMOVAL AND INSTALLATION



Removal steps

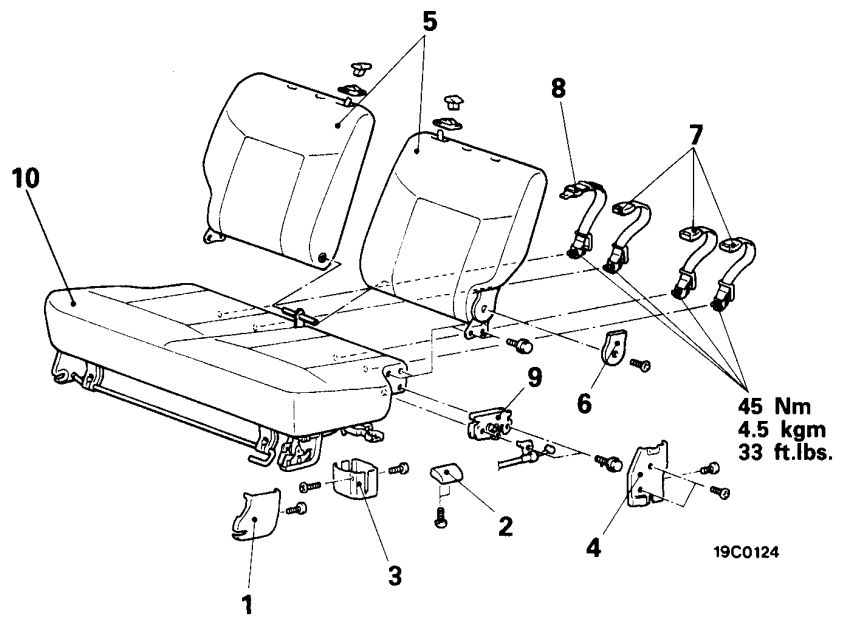
1. Rear seat assembly
2. Seat anchor cover
3. Bolt
4. Seat striker

NOTE

After provisionally tightening the bolts marked with a * in all locations, tighten them to the specified torque.

DISASSEMBLY AND REASSEMBLY

E52KE-B



Disassembly steps

1. Latch cover
2. Tumble lever
3. Lever cover
4. Latch cover
5. Seat back assembly
6. Reclining cover
7. Inner seat belt
8. Outer seat belt
9. Latch assembly
10. Seat cushion assembly

E52KA-C

SECOND SEAT <SPACE WAGON>

REMOVAL AND INSTALLATION

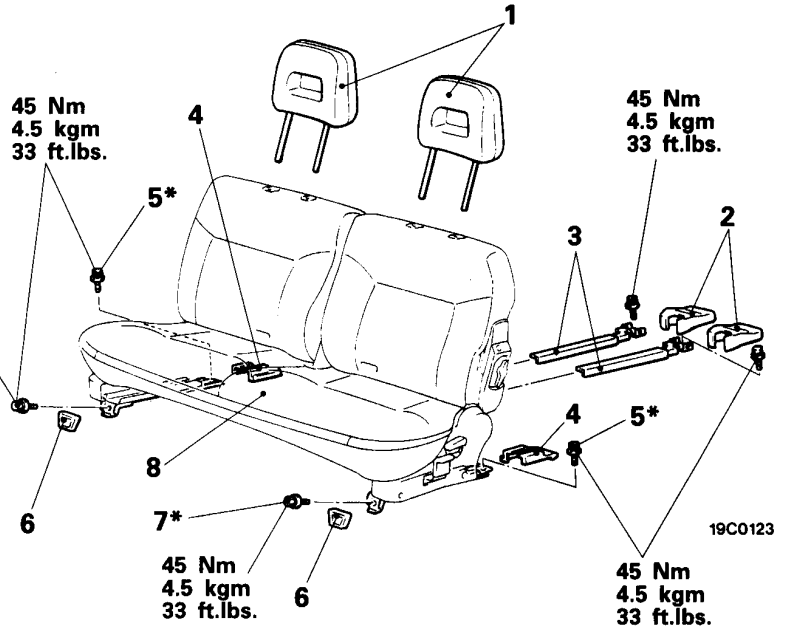
1. Headrest

Second seat removal steps

2. Rail cover
3. Seat belt rail
4. Seat anchor cover
5. Bolt
6. Seat anchor cover
7. Bolt
8. Second seat assembly

NOTE

After provisionally tightening the bolts marked with a * in all locations, tighten them to the specified torque.

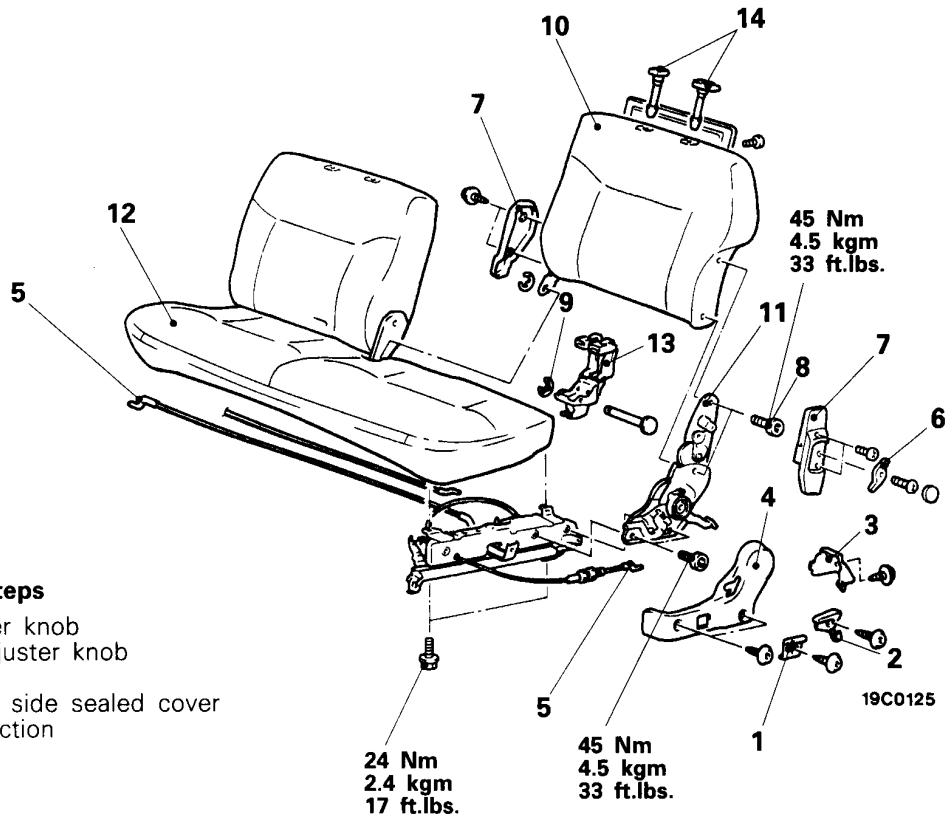


DISASSEMBLY AND REASSEMBLY

E52KE-C

Disassembly steps

1. Slide adjuster knob
2. Reclining adjuster knob
3. Cover
4. Second seat side sealed cover
5. Cable connection
6. Lever
7. Hinge cover
8. Bolt
9. E ring
10. Seat back assembly
11. Seat adjuster
12. Seat cushion assembly
13. Seat belt rail holder
14. Head restraint guide



THIRD SEAT <SPACE WAGON>

REMOVAL AND INSTALLATION

E52KA-D

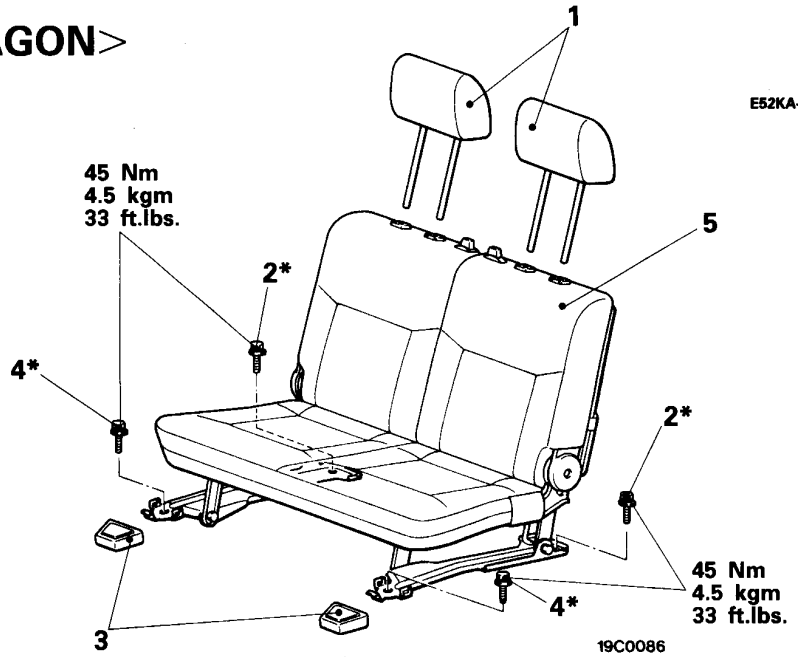
- 1. Head restraint

Third seat removal steps

- 2. Bolt
- 3. Seat anchor cover
- 4. Bolt
- 5. Third seat

NOTE

After provisionally tightening the bolts marked with a * in all locations, tighten them to the specified torque.

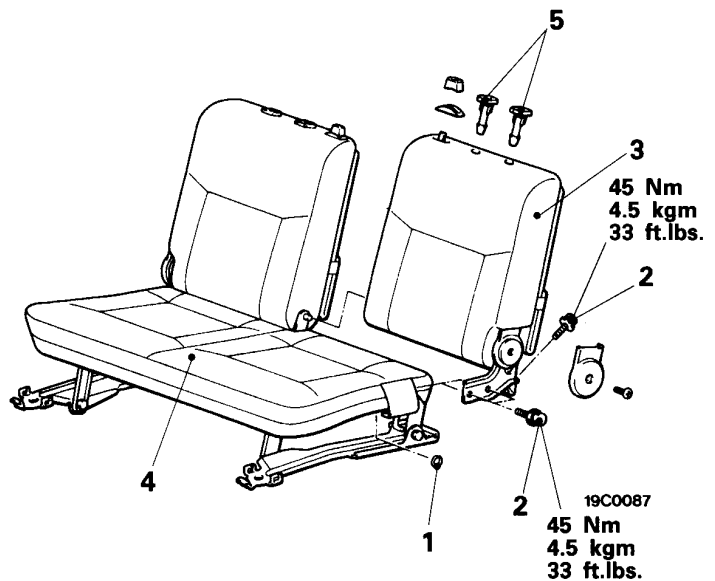


DISASSEMBLY AND REASSEMBLY

E52KE-D

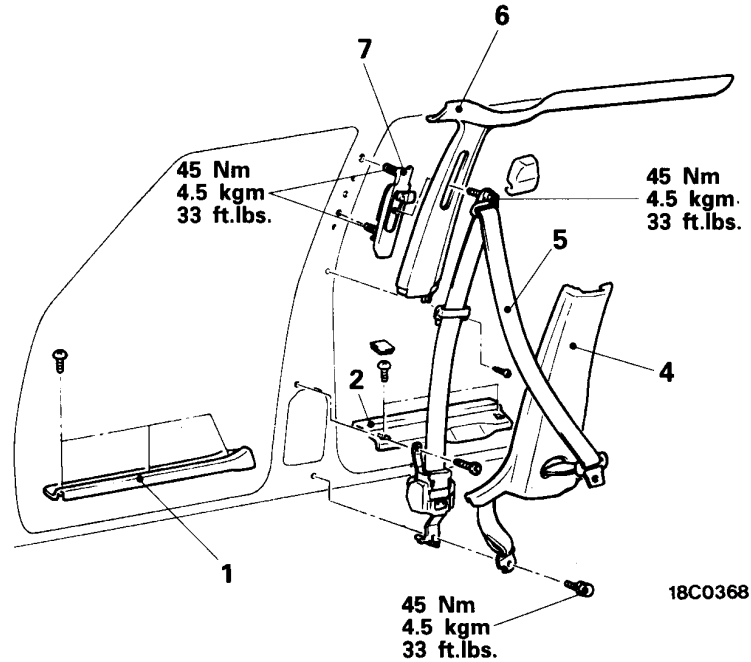
Disassembly steps

- 1. C ring
- 2. Bolt
- 3. Seat back
- 4. Seat cushion
- 5. Headrestraint guide



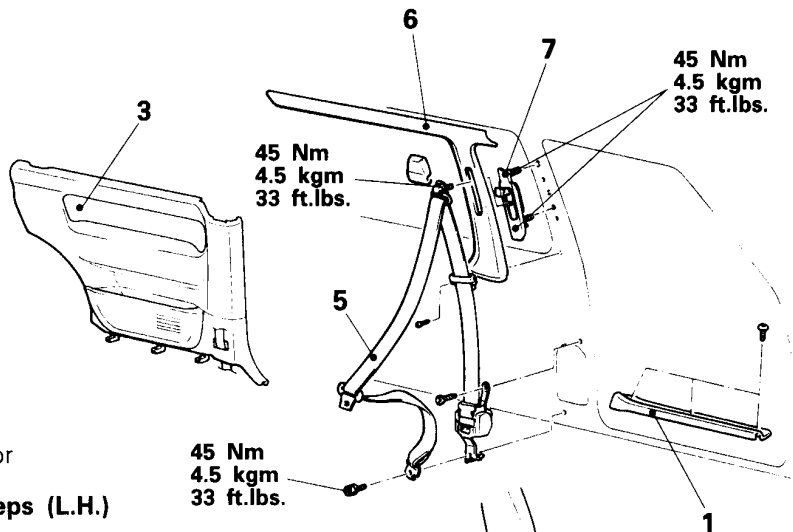
FRONT SEAT BELT

REMOVAL AND INSTALLATION <SPACE RUNNER>



Outer seat belt removal steps (R.H.)

1. Front scuff plate
3. Quarter lower trim
(Refer to P.52A-7.)
5. Outer seat belt
6. Center pillar upper trim
(Refer to P.52A-9.)
7. Adjustable shoulder anchor



Outer seat belt removal steps (L.H.)

1. Front scuff plate
2. Rear scuff plate
4. Center pillar lower trim
(Refer to P.52A-9.)
5. Outer seat belt assembly
6. Center pillar upper trim
(Refer to P.52A-9.)
7. Adjustable shoulder anchor

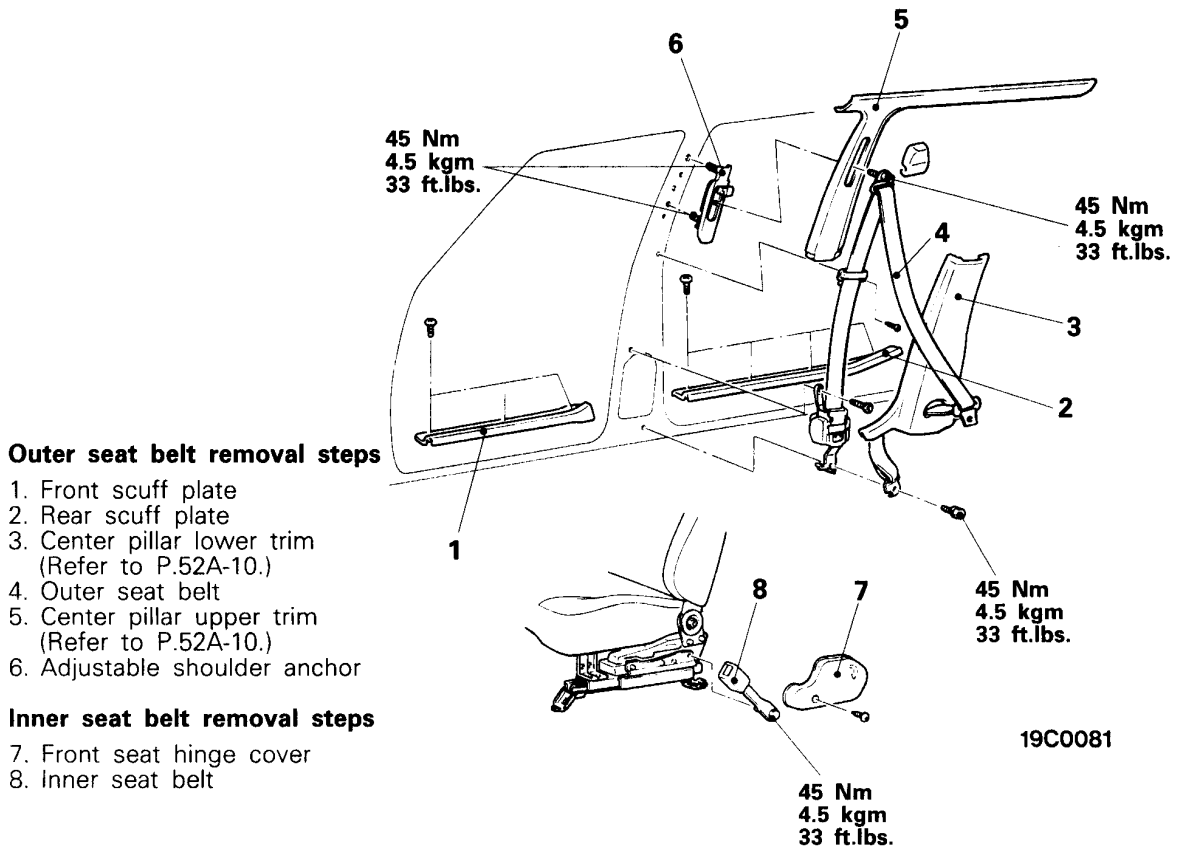
Inner seat belt removal steps

8. Front seat hinge cover
9. Inner seat belt

52A-20 INTERIOR – Front Seat Belt/Rear Seat Belt <SPACE RUNNER>

REMOVAL AND INSTALLATION <SPACE WAGON>

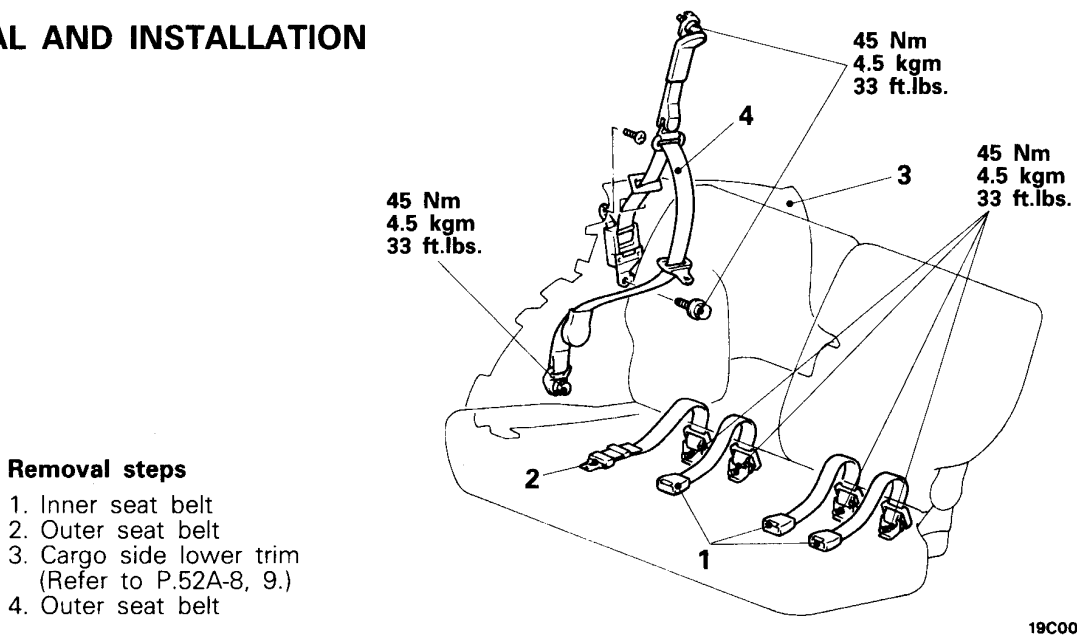
E52MA-B



REAR SEAT BELT <SPACE RUNNER>

REMOVAL AND INSTALLATION

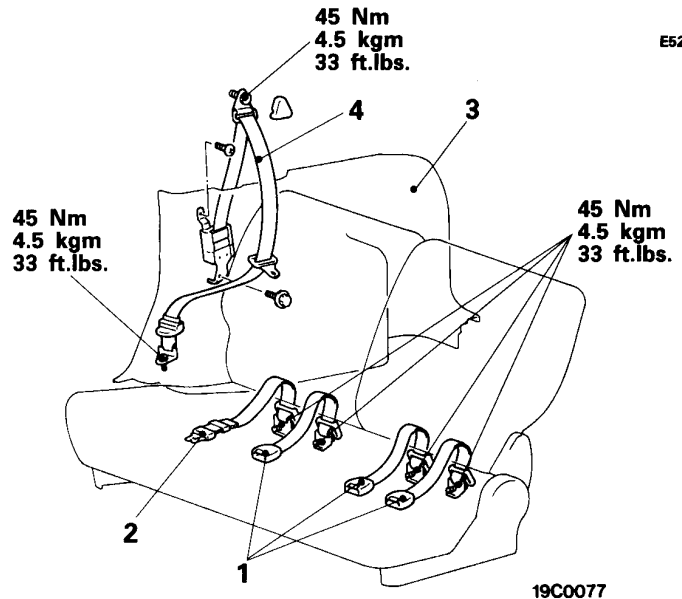
E52MA-C



SECOND SEAT BELT <SPACE WAGON>

REMOVAL AND INSTALLATION

E52MA-D



Removal steps

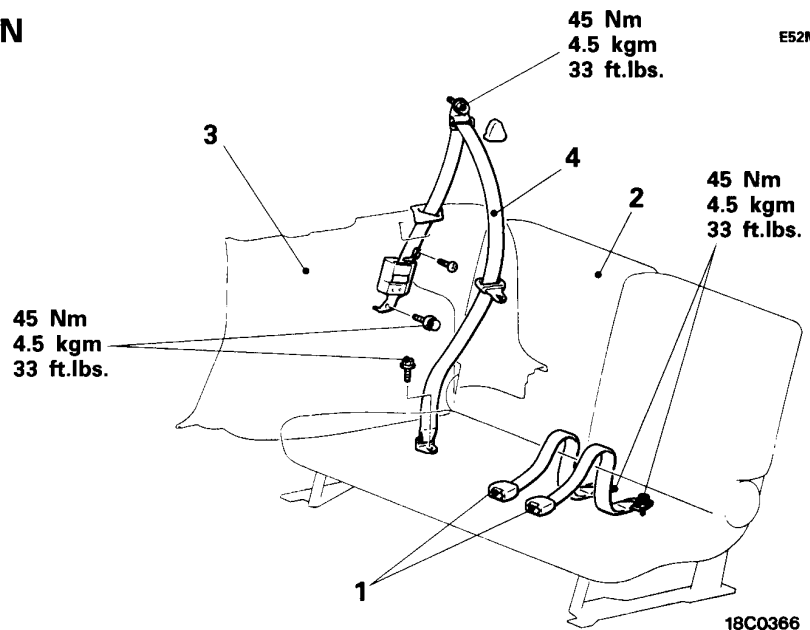
1. Inner seat belt
2. Outer seat belt (Center)
3. Cargo side lower trim
(Refer to P.52A-11.)
4. Outer seat belt

19C0077

THIRD SEAT BELT <SPACE WAGON>

REMOVAL AND INSTALLATION

E52MA-E



Removal steps

1. Inner seat belt
2. Third seat assembly
3. Cargo side lower trim
4. Outer seat belt

18C0366