

---

# FUEL

# FUEL SUPPLY

## CONTENTS

13509000272

<b>GENERAL INFORMATION</b> .....	<b>2</b>	<b>FUEL TANK</b> .....	<b>3</b>
<b>SPECIAL TOOL</b> .....	<b>2</b>	Fuel Pump Module .....	6



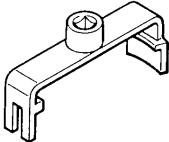
**GENERAL INFORMATION**

13500010182

1. The fuel tank is located under the floor of the rear seats to provide increased safety and a wider luggage space.
2. A valve assembly (rollover valve) has been adopted to prevent fuel from leaking out in the event of a collision.
3. A plastic fuel tank has been adopted to reduce weight, and improve anti-corrosion effectiveness.

**SPECIAL TOOL**

13500060132

Tool	Number	Name	Use
	MB996009	Tank cap wrench	Removal and installation of tank cap

# FUEL TANK

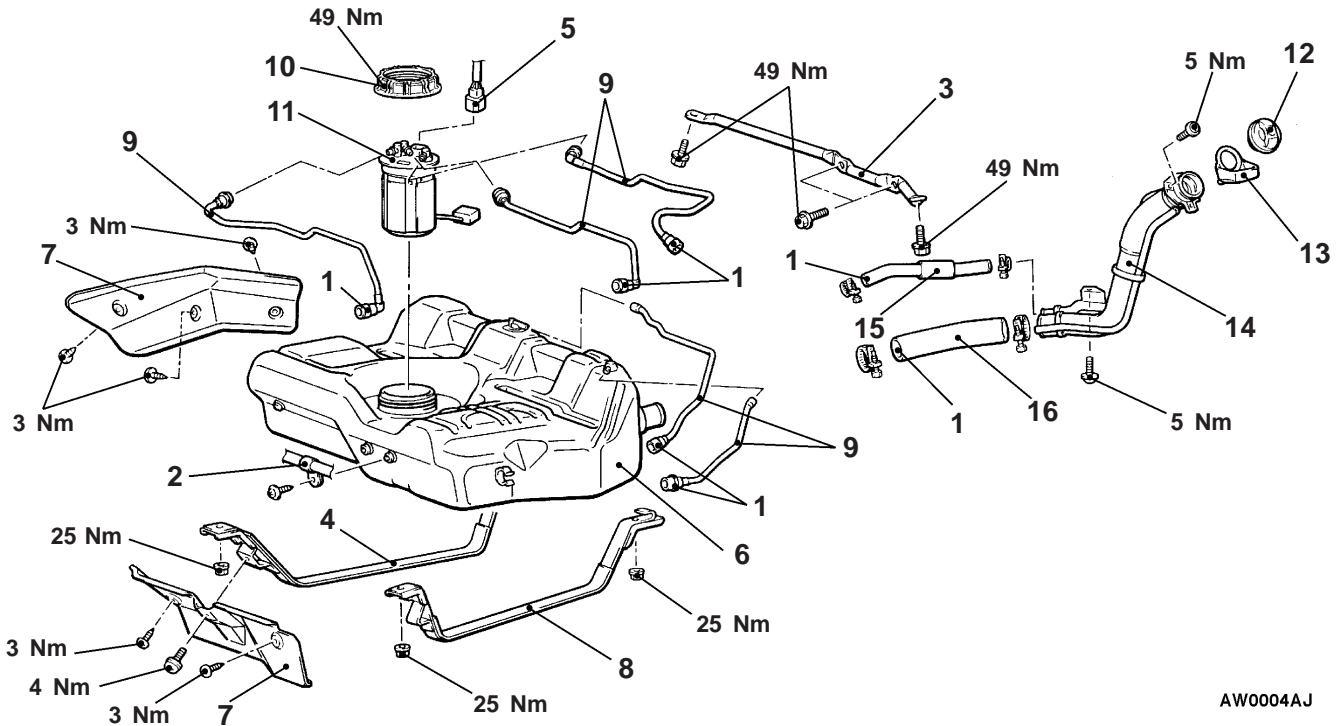
## REMOVAL AND INSTALLATION

### Pre-removal Operation

- Draining the Fuel
- Reduce the Inner Pressure of Fuel Line and Hose (Refer to GROUP 13A, B – On-vehicle Service.)

### Post-installation Operation

- Refilling the Fuel.
- Checking for Fuel Leaks.

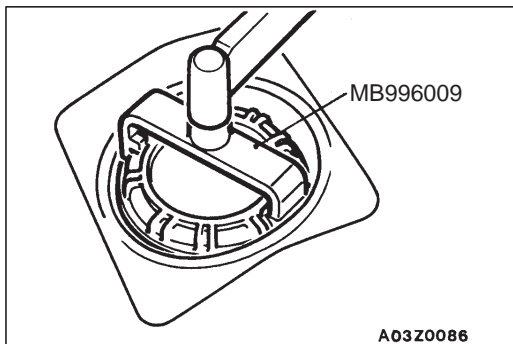


AW0004AJ

### Removal steps

1. Fuel hoses connection
2. Harness clamp
3. Toe control link support bar
4. Band (RH)
5. Fuel pump module connector
6. Fuel tank assembly
7. Heat protector
8. Band (LH)

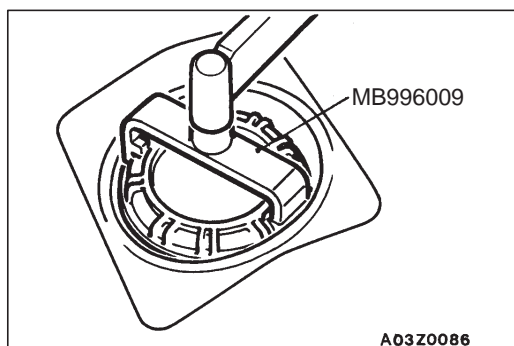
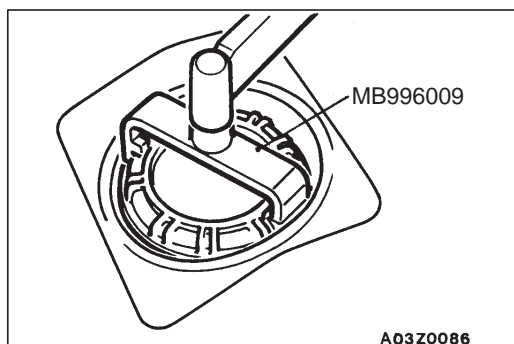
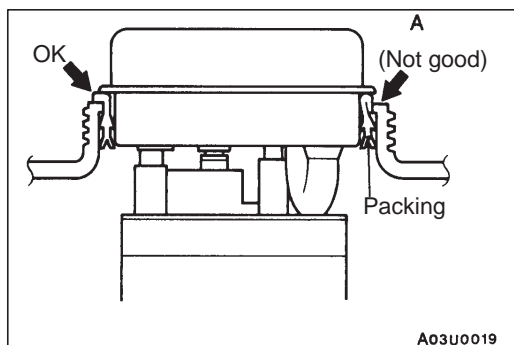
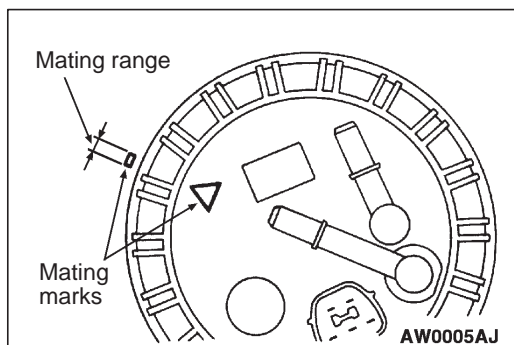
9. Fuel hoses
10. Cap
11. Fuel pump module
12. Fuel filler cap
13. Fuel rubber drain
14. Filler neck assembly
15. Leveling hose
16. Filler hose



A03Z0086

### REMOVAL SERVICE POINT

◀A▶ CAP REMOVAL



## INSTALLATION SERVICE POINTS

### ▶A◀ FUEL PUMP MODULE INSTALLATION

1. Check to be sure that the fuel tank packing is not damaged or deformed, and then securely install the packing to the fuel tank.

#### Caution

If the packing is installed to the fuel pump module, packing lip will be damaged when installing the fuel pump module to the fuel tank and the fuel leak will result.

#### NOTE

If the packing is damaged or deformed, replace the defective packing with a new packing.

2. Apply soapy water to the inside of the packing. Align the mating marks on the fuel tank and fuel pump module as shown in the illustration, and then install the fuel pump module to the fuel tank.

#### Caution

- (1) Do not tilt the fuel pump module when installing.
- (2) The packing should not be folded over as shown by (A) in the illustration.

### ▶B◀ CAP INSTALLATION

Apply soapy water to the cap thread, and then use the special tool as the same manner as for removal to tighten the cap to the specified torque.

**Tightening torque: 49 Nm**

#### Caution

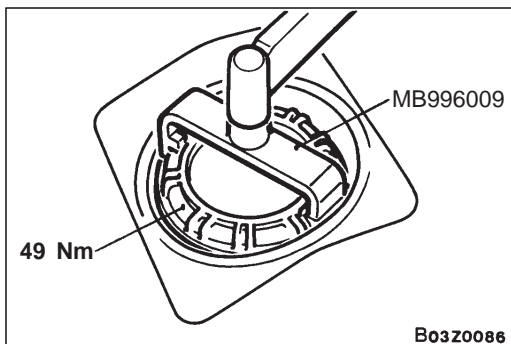
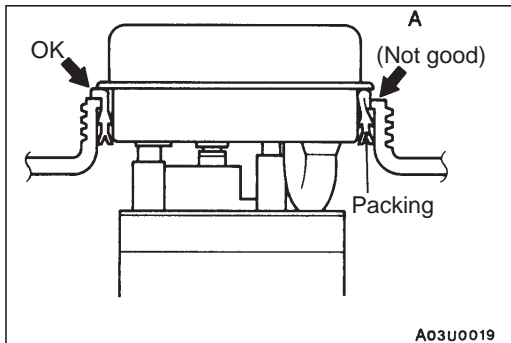
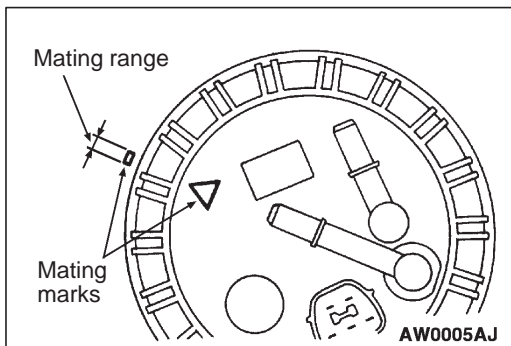
Prevent the fuel pump module from turning with the cap when tightening the cap.

## INSPECTION

13500160207

### FUEL PUMP MODULE REPLACEMENT

1. Bleed the residual pressure from inside the fuel pipe line to prevent the fuel from spraying out. (Refer to GROUP 13 – On-vehicle Service.)
2. Disconnect the fuel hoses.
3. Use the special tool to remove the cap, and then remove the fuel pump module.



4. Check to be sure that the fuel tank packing is not damaged or deformed, and then securely install the packing to the fuel tank.

**Caution**

If the packing is installed to the fuel pump module, packing lip will be damaged when installing the fuel pump module to the fuel tank and the fuel leak will result.

**NOTE**

If the packing is damaged or deformed, replace the defective packing with a new packing.

5. Apply soapy water to the inside of the packing. Align the mating marks on the fuel tank and fuel pump module as shown in the illustration, and then install the fuel pump module to the fuel tank.

**Caution**

- (1) Do not tilt the fuel pump module when installing.
- (2) The packing should not be folded over as shown by (A) in the illustration.

6. Use the special tool to tighten the cap to the specified torque.

**Tightening torque: 49 Nm**

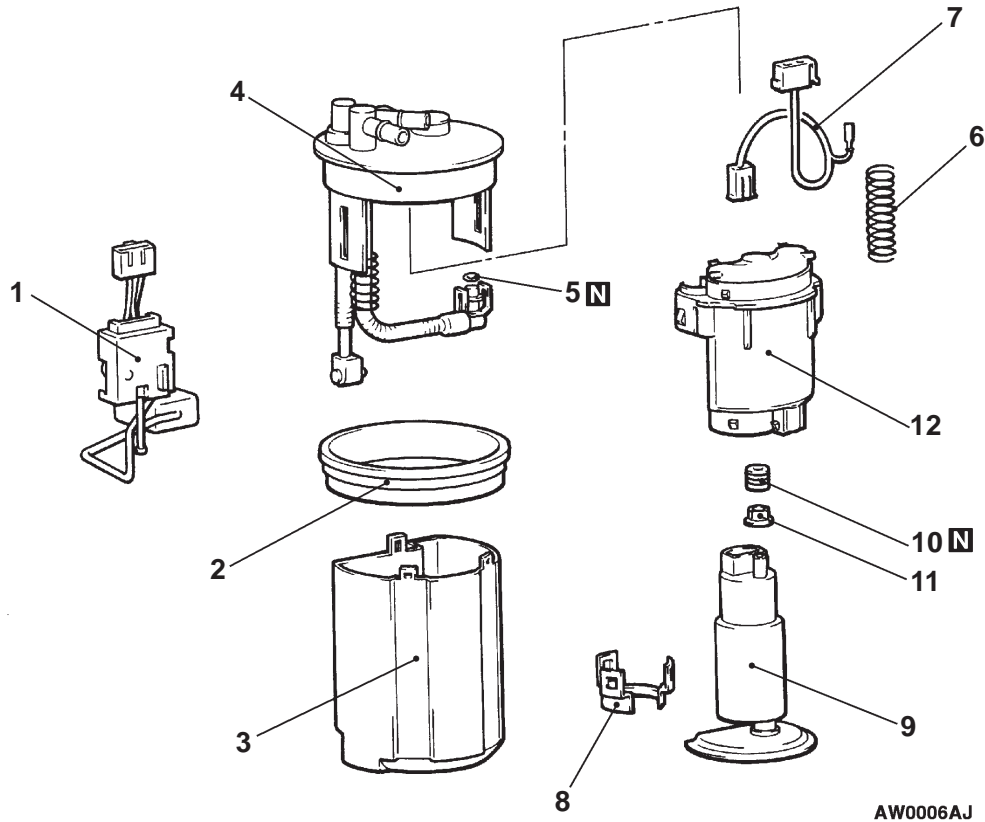
7. Check for leaks from the installation section of the fuel pump module by the following procedure.
  - (1) Apply soapy water to the circumference of the cap.
  - (2) Choke the vapor hose and main hose, apply an internal pressure of 10 kPa or less from the return hose and check to be sure that no bubbles form in the soapy water.

**FUEL GAUGE CHECK**

13500310169

Refer to GROUP 54 – Combination Meter.

**DISASSEMBLY AND REASSEMBLY**  
**FUEL PUMP MODULE**



**Disassembly steps**

- 1. Fuel gauge unit
- 2. Packing
- 3. Reservoir cup
- 4. Pump support bracket assembly
- 5. O-ring
- 6. Spring



- 7. Pump harness
- 8. Lock bracket
- 9. Fuel pump
- 10. Grommet
- 11. Spacer
- 12. Fuel filter



**REASSEMBLY SERVICE POINT**

**▶A◀ GROMMET/O-RING INSTALLATION**

Apply a unleaded petrol to the grommet and O-ring before installing them in order to prevent damage.

# FUEL SUPPLY



## CONTENTS

<b>GENERAL</b> .....	<b>2</b>	<b>SPECIAL TOOL</b> .....	<b>2</b>
Outline of Change .....	2	<b>FUEL TANK &lt;F9QT&gt;</b> .....	<b>3</b>

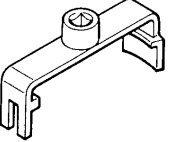




**GENERAL****OUTLINE OF CHANGE**

The following service procedures have been established to correspond to the addition of the F9QT diesel engine. Other service procedures are the same as before.

**SPECIAL TOOL**

Tool	Number	Name	Use
	MB996009	Tank cap wrench	Installation of tank cap

# FUEL TANK <F9QT>

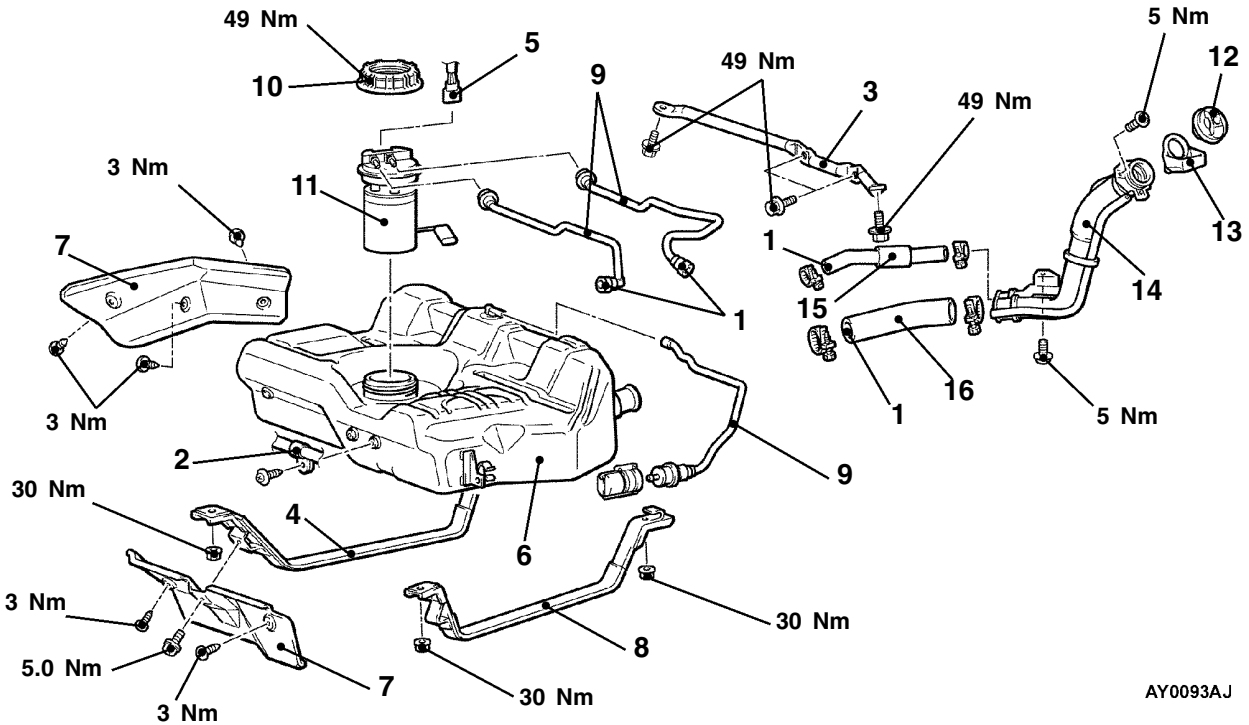
## REMOVAL AND INSTALLATION

**Pre-removal Operation**

- Draining the Fuel

**Post-installation Operation**

- Refilling the Fuel
- Checking for Fuel Leaks

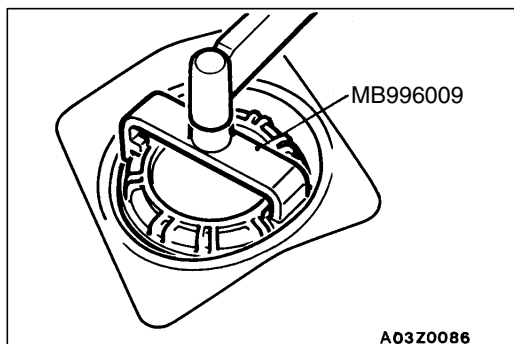


AY0093AJ

**Removal steps**

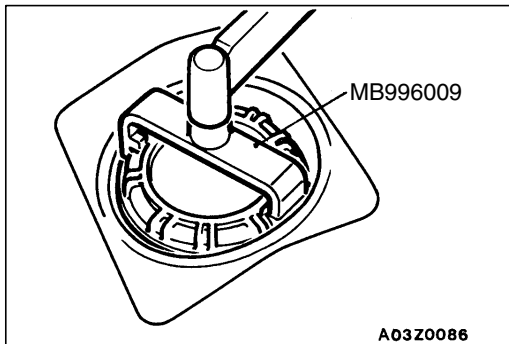
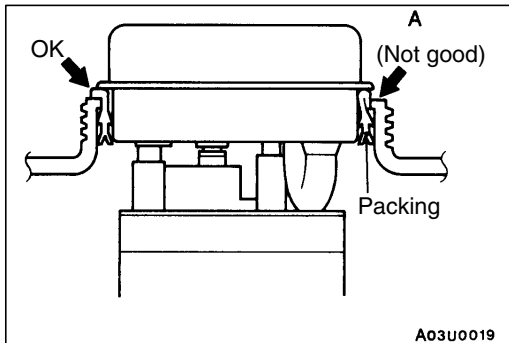
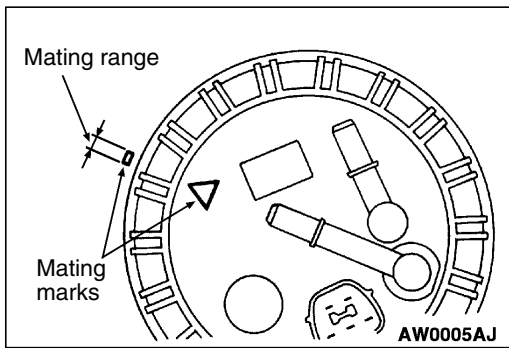
1. Fuel hoses connection
2. Harness clamp
3. Toe control link support bar
4. Band (RH)
5. Fuel pump module connector
6. Fuel tank assembly
7. Heat protector
8. Band (LH)

9. Fuel hoses
10. Cap
11. Fuel pump module
12. Fuel filler cap
13. Fuel rubber drain
14. Filler neck assembly
15. Leveling hose
16. Filler hose



**REMOVAL SERVICE POINT**

◀A▶ CAP REMOVAL



## INSTALLATION SERVICE POINTS

### ▶A◀ FUEL PUMP MODULE INSTALLATION

1. Check to be sure that the fuel tank packing is not damaged or deformed, and then securely install the packing to the fuel tank.

#### Caution

If the packing is installed to the fuel pump module, packing lip will be damaged when installing the fuel pump module to the fuel tank and the fuel leak will result.

#### NOTE

If the packing is damaged or deformed, replace the defective packing with a new packing.

2. Apply soapy water to the inside of the packing. Align the mating marks on the fuel tank and fuel pump module as shown in the illustration, and then install the fuel pump module to the fuel tank.

#### Caution

- (1) Do not tilt the fuel pump module when installing.
- (2) The packing should not be folded over as shown by (A) in the illustration.

### ▶B◀ CAP INSTALLATION

Apply soapy water to the cap thread, and then use the special tool as the same manner as for removal to tighten the cap to the specified torque.

**Tightening torque: 49 Nm**

#### Caution

Prevent the fuel pump module from turning with the cap when tightening the cap.