

POWER PLANT MOUNT

POWER PLANT MOUNT

CONTENTS

32109000219

GENERAL INFORMATION	2	TRANSMISSION MOUNTING	4
SERVICE SPECIFICATION	2	ENGINE ROLL STOPPER, CENTERMEMBER	5
SPECIAL TOOLS	2	CROSSMEMBER	6
ENGINE MOUNTING	3		



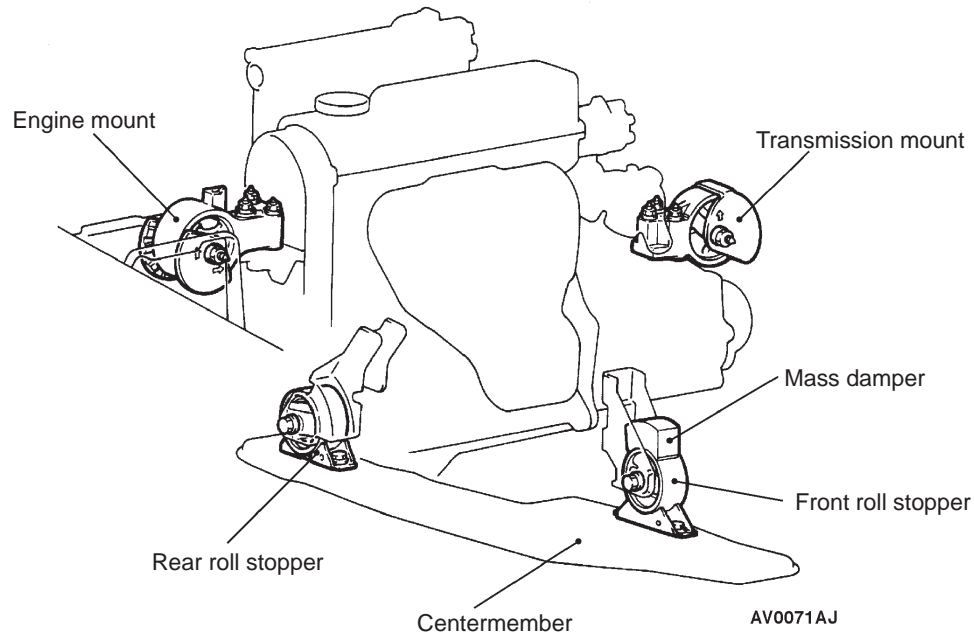
GENERAL INFORMATION

32100010198

The engine-transmission mount is of an inertial axis supporting type whose excellent features have already been proven in many Mitsubishi vehicles. The inertial axis supporting type mount supports

the front upper part of the engine at the front and the rear upper part of the transmission at the rear. This arrangement effectively suppresses the engine vibration.

CONSTRUCTION DIAGRAM



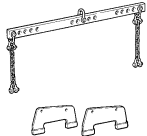
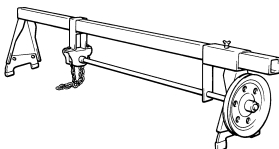
SERVICE SPECIFICATION

32100030064

Item	Standard value
Protruding length of stabilizer bar mounting bolt mm	22

SPECIAL TOOLS

32100060186

Tool	Number	Name	Use
	MB991453	Engine hanger	To support the engine and transmission assembly during removal and installation of the centermember
	GENERAL SERVICE TOOL MZ203827	Engine lifter	

ENGINE MOUNTING

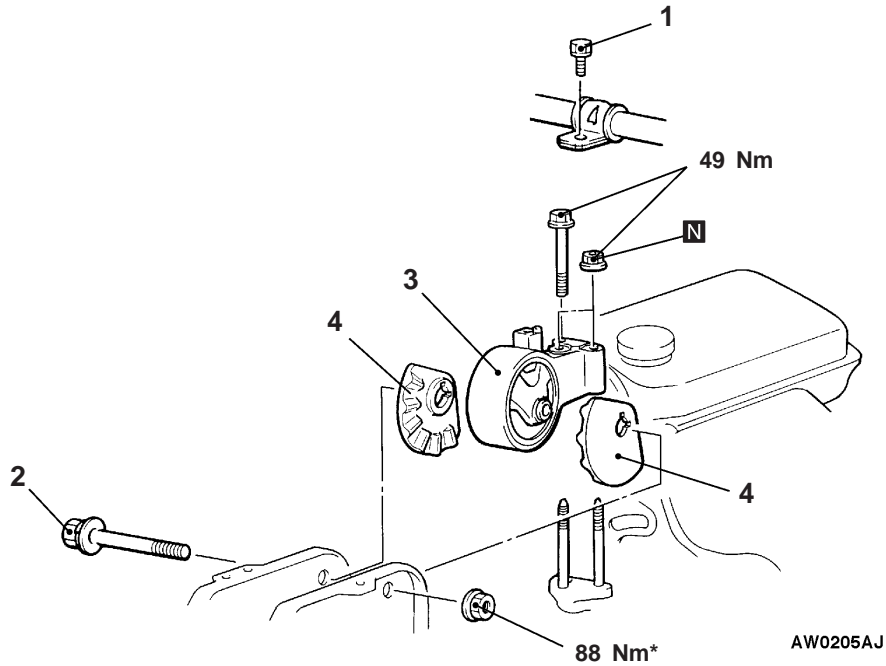
32100010379

REMOVAL AND INSTALLATION

Caution

Mounting locations marked by * should be provisionally tightened, and then fully tightened when the body is supporting the full weight of the engine.

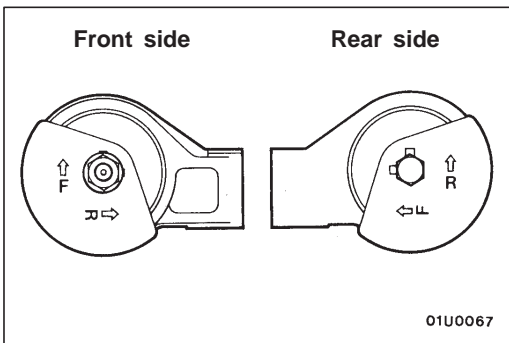
Pre-removal Operation
 Jack Up the Engine and Transmission Assembly Until There is no Weight on the Engine Mount Bracket Insulator.



Removal steps

1. Power steering pressure hose mounting bolt
2. Engine mount insulator mounting bolt

- ▶◀ 3. Engine mount bracket
- ▶◀ 4. Engine mount stopper



INSTALLATION SERVICE POINT

▶◀ ENGINE MOUNT STOPPER INSTALLATION

1. At the front, install so that the arrow with the "F" mark is facing upward.
2. At the rear, install so that the arrow with the "R" mark is facing upward.

TRANSMISSION MOUNTING

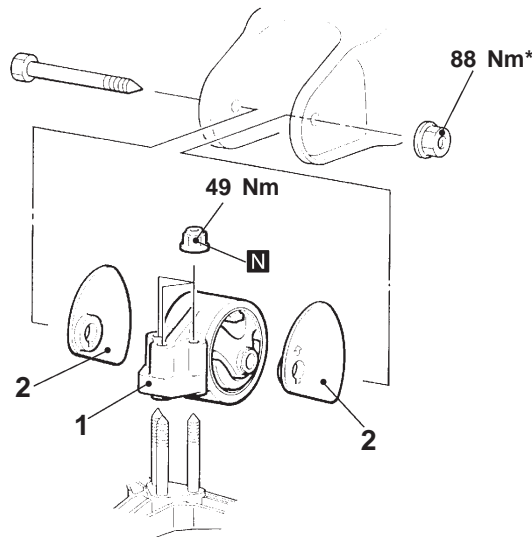
32100140217

REMOVAL AND INSTALLATION

Caution

Mounting locations marked by * should be provisionally tightened, and then fully tightened when the body is supporting the full weight of the engine.

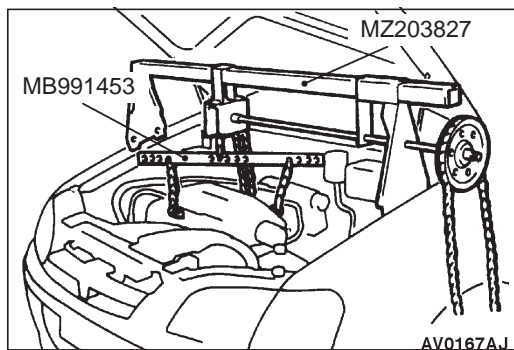
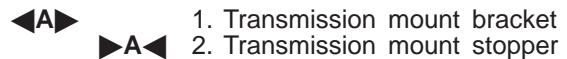
Pre-removal and Post-installation Operation
Air Cleaner Assembly Removal and Installation



A01U0009

Removal steps

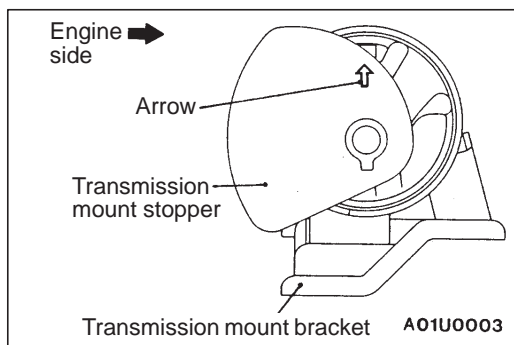
- Centermember mounting bolt (Refer to P.32-5.)



REMOVAL SERVICE POINT

◀A▶ TRANSMISSION MOUNT BRACKET REMOVAL

1. Install the special tool to the vehicle body to support the engine and transmission assembly.
2. Remove the centermember mounting bolts.
3. Remove the bolt and nuts of the transmission mount bracket.
4. After lowering the engine and transmission assembly, remove the transmission mount bracket.



INSTALLATION SERVICE POINT

▶A◀ TRANSMISSION MOUNT STOPPER INSTALLATION

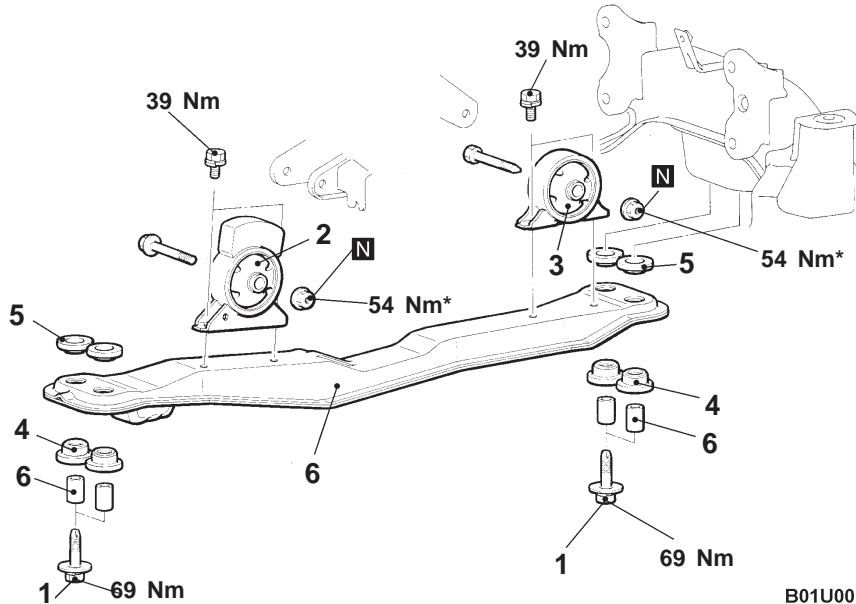
Clamp the transmission mount stopper so that the arrow points in the direction as shown in the diagram.

ENGINE ROLL STOPPER, CENTERMEMBER

REMOVAL AND INSTALLATION

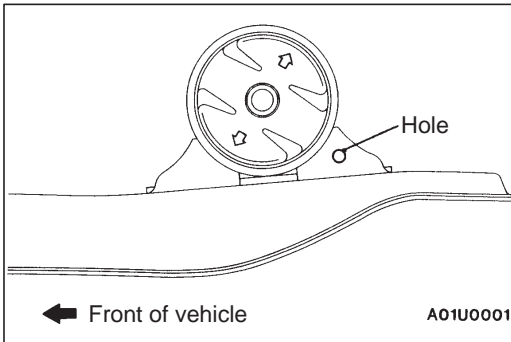
Caution

Mounting locations marked by * should be provisionally tightened, and then fully tightened when the body is supporting the full weight of the engine.



Removal steps

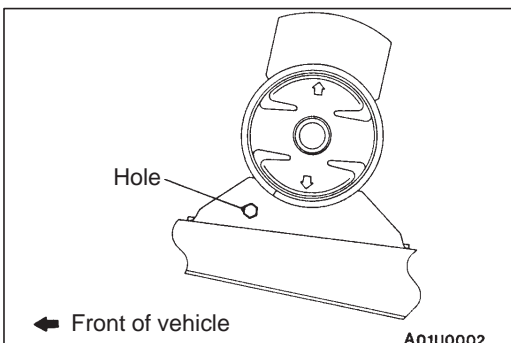
- | | | |
|-----------------------|--|--|
| <p>▶B◀</p> <p>▶A◀</p> | <ol style="list-style-type: none"> 1. Bolt 2. Front roll stopper bracket assembly 3. Rear roll stopper bracket assembly | <ol style="list-style-type: none"> 4. Bushing (lower) 5. Bushing (upper) 6. Collar 7. Centermember |
|-----------------------|--|--|



INSTALLATION SERVICE POINTS

▶A◀ REAR ROLL STOPPER BRACKET ASSEMBLY INSTALLATION

Install so that the hole in the rear roll stopper bracket is facing towards the rear of the vehicle.



▶B◀ FRONT ROLL STOPPER BRACKET ASSEMBLY INSTALLATION

Install so that the hole in the front roll stopper bracket is facing towards the front of the vehicle.

CROSSMEMBER

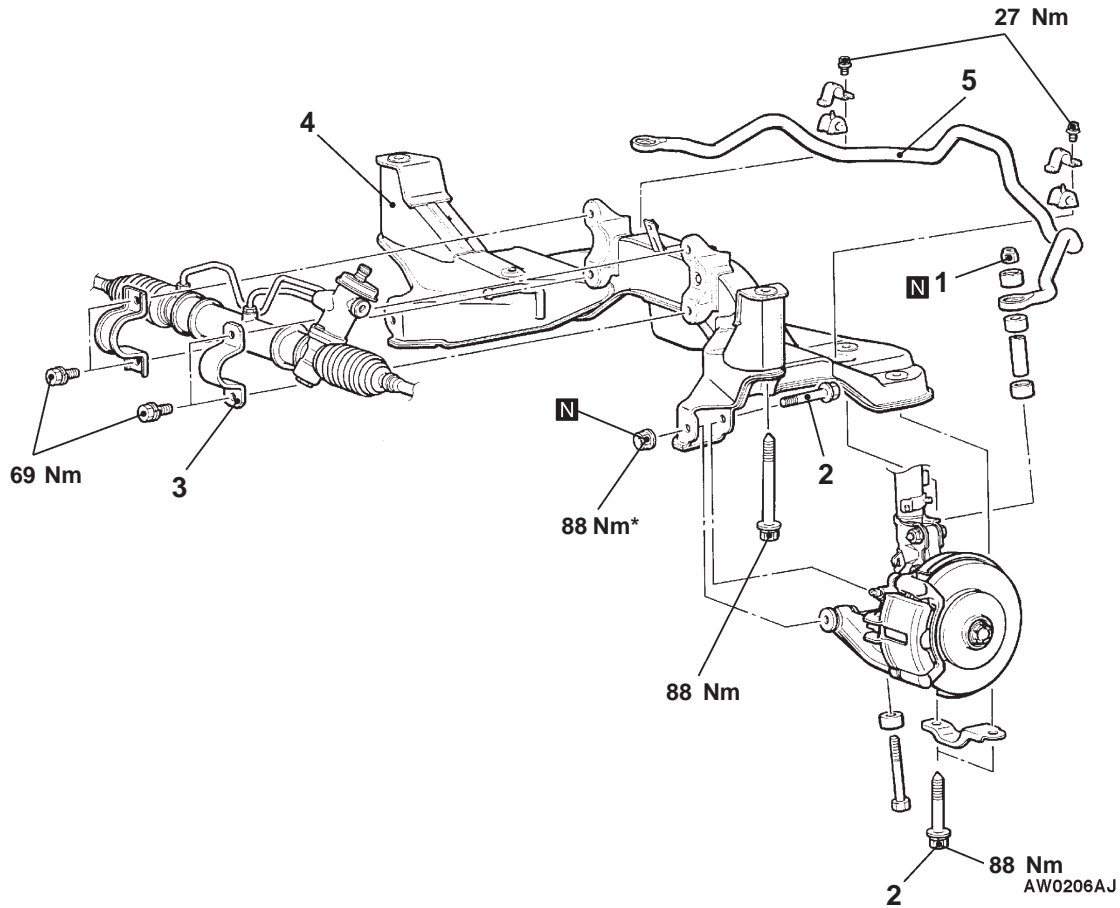
REMOVAL AND INSTALLATION

Caution

Mounting locations marked by * should be provisionally tightened, and then fully tightened when the body is supporting the full weight of the engine.

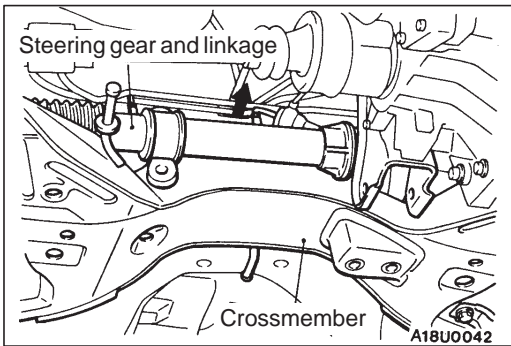
Pre-removal and Post-installation Operation

- Front Exhaust Pipe Removal and Installation (Refer to GROUP 15.)
- Centermember Assembly Removal and Installation (Refer to P.32-5.)



Removal steps

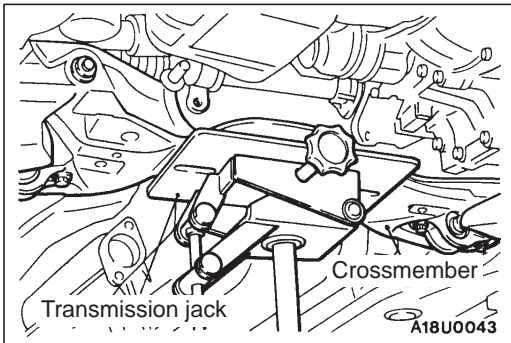
- ▶C◀ 1. Self-locking nut
- ▶B◀ 2. Lower arm mounting bolt
- ▶A◀ 3. Steering gear and linkage clamp
- ▶A◀ 4. Crossmember assembly
- ▶A◀ 5. Stabilizer bar



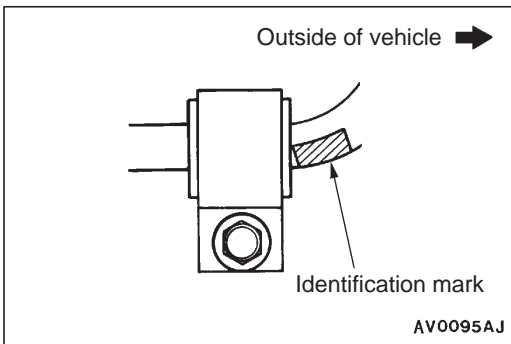
REMOVAL SERVICE POINT

◀A▶ CROSSMEMBER ASSEMBLY REMOVAL

1. Move the crossmember while supporting the steering gear and linkage in the direction shown by the arrow.



2. Remove the crossmember while supporting it with a transmission jack.



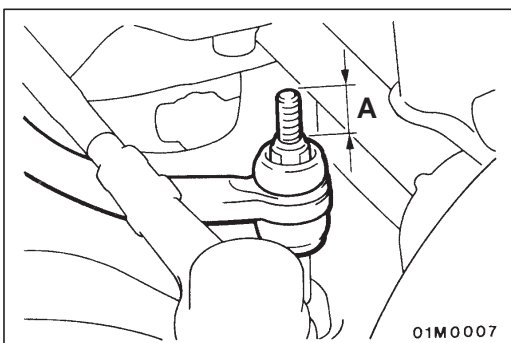
INSTALLATION SERVICE POINT

▶A◀ STABILIZER BAR INSTALLATION

Place the identification mark of the stabilizer bar to the right, and install the bushing so that the identification mark is at the shown position.

▶B◀ CROSSMEMBER ASSEMBLY INSTALLATION

Install the crossmember while supporting it with a transmission jack.



▶C◀ SELF-LOCKING NUT INSTALLATION

Tighten the self-locking nut so that the amount of protrusion of the end of the stabilizer bar mounting bolt is at the standard value.

Standard value (A): 22 mm

NOTES

GROUP 32

POWER PLANT MOUNT

GENERAL

OUTLINE OF CHANGES

The following service procedures have been established to correspond to the addition of the F9Q1 diesel engine.

ENGINE MOUNTING

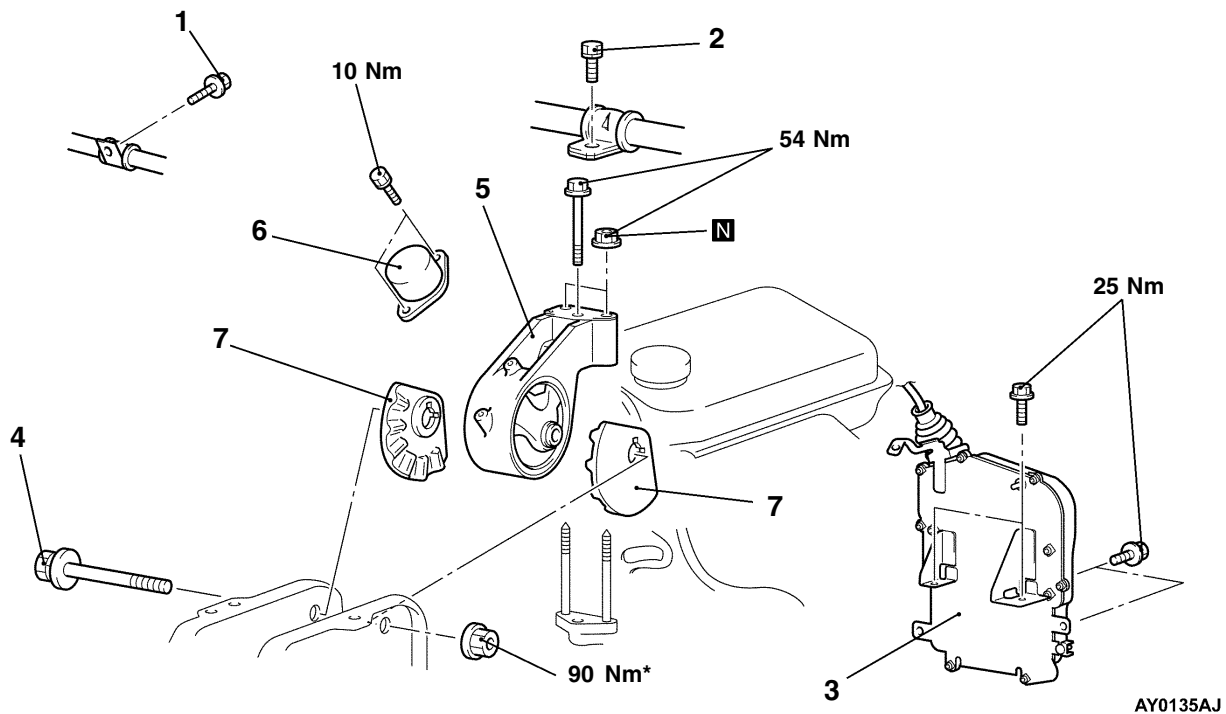
REMOVAL AND INSTALLATION

Caution

Mounting locations marked by * should be provisionally tightened, and then fully tightened when the body is supporting the full weight of the engine.

Pre-removal Operation

Jack up the Engine and Transmission Assembly until There is no Weight on the Engine Mount Bracket Insulator.



Removal steps

1. A/C suction hose clump
2. Power steering pressure hose clump
3. Engine-ECU assembly
4. Engine mount insulator mounting bolt

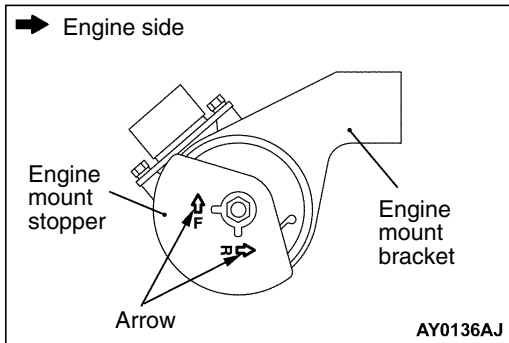


5. Engine mount bracket
6. Engine mount stopper
7. Dynamic damper



REMOVAL SERVICE POINT**◀A▶ ENGINE-ECU ASSEMBLY REMOVAL**

Disconnect the engine-ECU assembly, with its wiring harness attached, and move the ECU assembly aside so that it will not be in the way while removing the engine mount.

**INSTALLATION SERVICE POINT****▶A◀ ENGINE MOUNT STOPPER INSTALLATION**

Install the engine mount stopper so that the arrow marks point toward the shown direction.

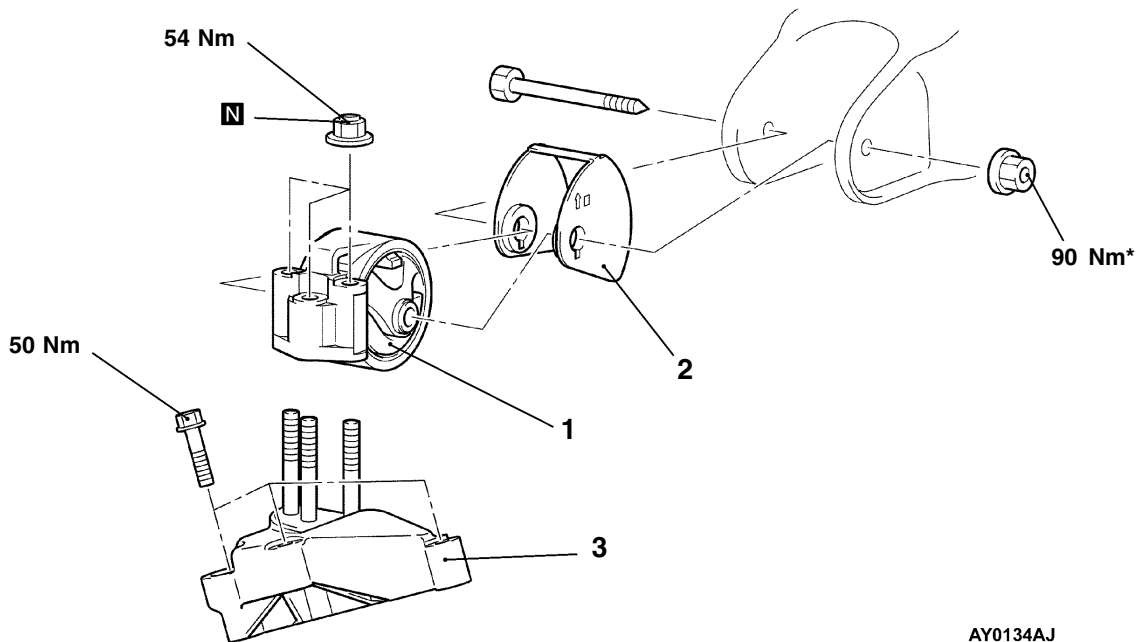
TRANSMISSION MOUNTING

REMOVAL AND INSTALLATION

Caution

Mounting locations marked by * should be provisionally tightened, and then fully tightened when the body is supporting the full weight of the engine.

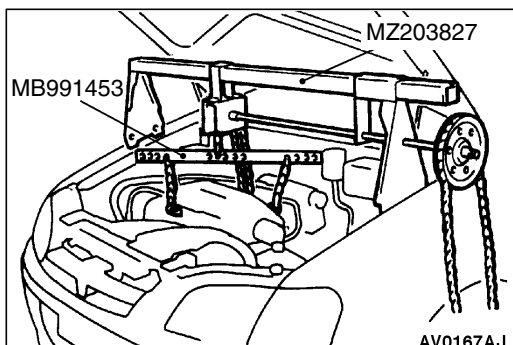
Pre-removal and Post-installation Operation
Air Cleaner Assembly Removal and Installation



Removal steps

- Centermember mounting bolt
- 1. Transmission mount bracket

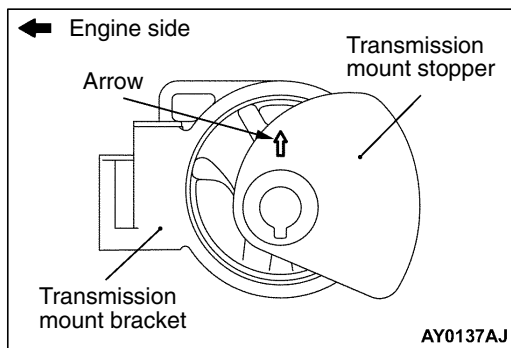
- ▶A◀ 2. Transmission mount stopper
- 3. Transmission mount lower bracket



REMOVAL SERVICE POINT

◀A▶ TRANSMISSION MOUNT BRACKET REMOVAL

1. Install the special tool to the vehicle body to support the engine and transmission assembly.
2. Remove the centermember mounting bolts.
3. Remove the bolt and nuts of the transmission mount bracket.
4. After lowering the engine and transmission assembly, remove the transmission mount bracket.



INSTALLATION SERVICE POINT

▶◀ TRANSMISSION MOUNT STOPPER INSTALLATION

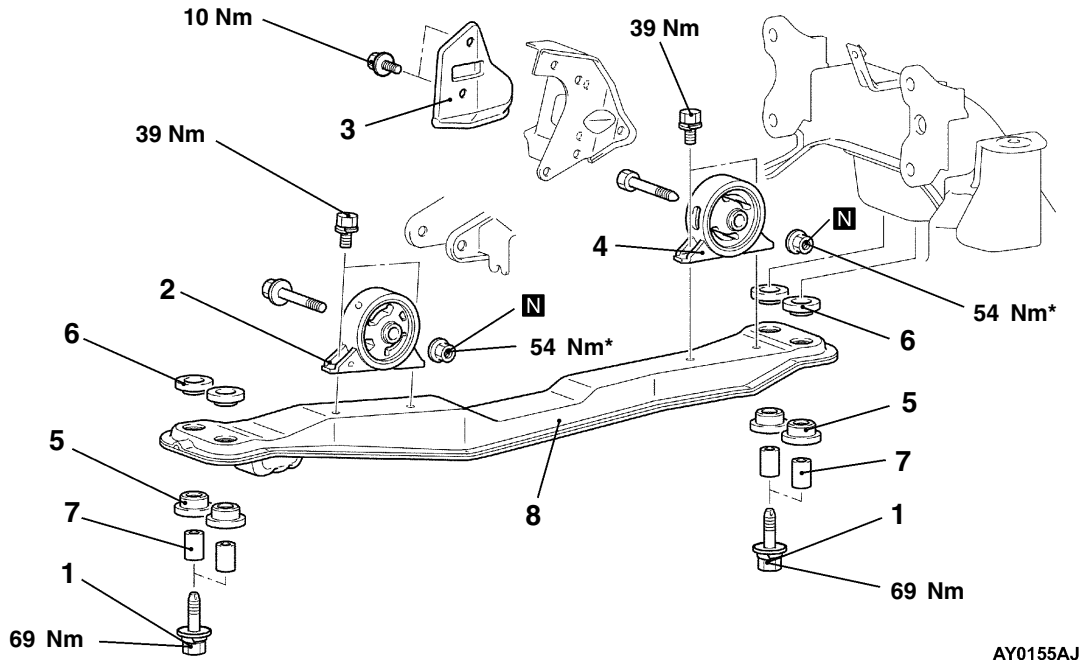
Install the transmission mount stopper so that the arrow mark points toward the shown direction.

ENGINE ROLL STOPPER, CENTERMEMBER

REMOVAL AND INSTALLATION

Caution

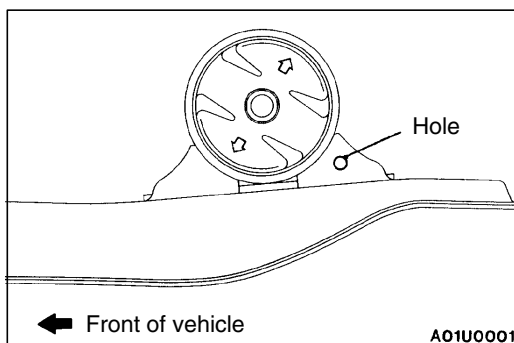
Mounting locations marked by * should be provisionally tightened, and then fully tightened when the body is supporting the full weight of the engine.



Removal steps

- 1. Bolt
- ▶B◀ 2. Front roll stopper bracket assembly
- ▶A◀ 3. Rear roll stopper heat protector
- ▶A◀ 4. Rear roll stopper bracket assembly

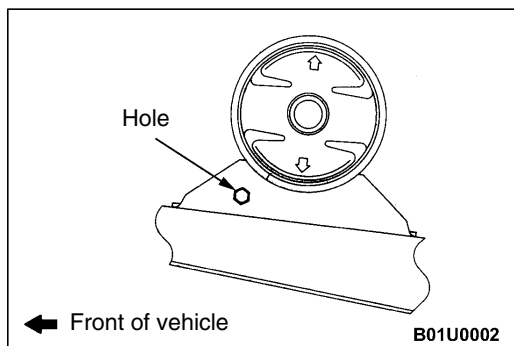
- 5. Bushing (lower)
- 6. Bushing (upper)
- 7. Collar
- 8. Centermember



INSTALLATION SERVICE POINTS

▶A◀ REAR ROLL STOPPER BRACKET ASSEMBLY INSTALLATION

Install so that the hole in the rear roll stopper bracket is facing towards the rear of the vehicle.

**▶B◀ FRONT ROLL STOPPER BRACKET ASSEMBLY
INSTALLATION**

Install so that the hole in the front roll stopper bracket is facing towards the front of the vehicle.