
PARKING BRAKES

PARKING BRAKES

CONTENTS

36109000248

GENERAL INFORMATION	2	ON-VEHICLE SERVICE	2
SERVICE SPECIFICATIONS	2	Parking Brake Lever Stroke Check	2
LUBRICANTS	2	Parking Brake Switch Check	3
		PARKING BRAKE LEVER*	4
		PARKING BRAKE CABLE*	5

WARNINGS REGARDING SERVICING OF SUPPLEMENTAL RESTRAINT SYSTEM (SRS) EQUIPPED VEHICLES

WARNING!

- (1) Improper service or maintenance of any component of the SRS, or any SRS-related component, can lead to personal injury or death to service personnel (from inadvertent firing of the airbag) or to the driver and passenger (from rendering the SRS inoperative).
- (2) Service or maintenance of any SRS component or SRS-related component must be performed only at an authorized MITSUBISHI dealer.
- (3) MITSUBISHI dealer personnel must thoroughly review this manual, and especially its GROUP 52B – Supplemental Restraint System (SRS) before beginning any service or maintenance of any component of the SRS or SRS-related component.

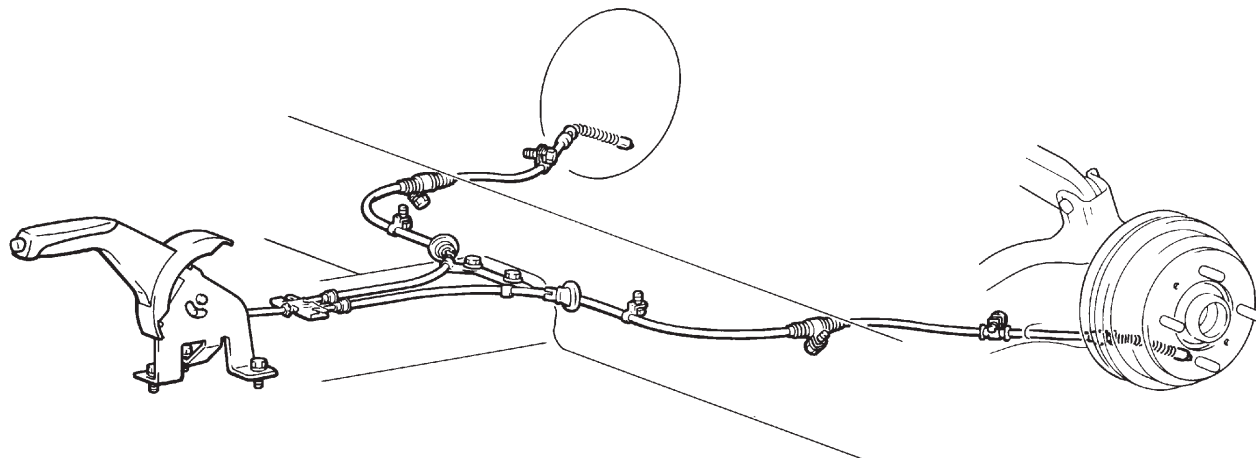
NOTE

The SRS includes the following components: SRS-ECU, SRS warning lamp, air bag module, clock spring and interconnecting wiring. Other SRS-related components (that may have to be removed/installed in connection with SRS service or maintenance) are indicated in the table of contents by an asterisk (*).

GENERAL INFORMATION

36100010219

The parking brake is of a mechanical rear-wheel brake construction in all vehicles.



V0086AJ

SERVICE SPECIFICATIONS

36100030031

Item	Specifications
Parking brake lever stroke [Operation force: Approx. 196N]	5 – 7 notches

LUBRICANTS

36100040034

Items	Specified lubricants
Backing plate	Brake grease SAE J310, NLGI No. 1
Shoe and lining assembly	
Adjuster	

ON-VEHICLE SERVICE

36100090206

PARKING BRAKE LEVER STROKE CHECK

1. Pull the parking brake lever with a force of approx. 196 N and count the number of notches.

Caution

The 196 N force of the parking brake lever must be strictly observed.

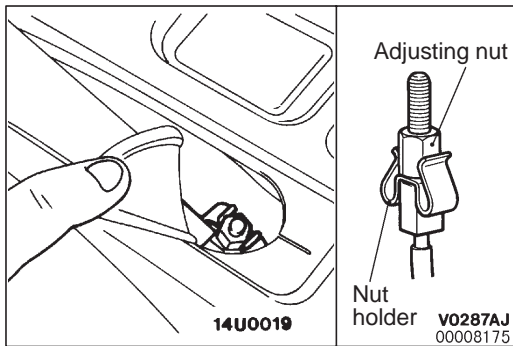
Standard value:

5 – 7 notches [Operation force: Approx. 196N]

2. If the parking brake lever stroke is not the standard value, adjust as described below.
 - (1) Loosen the adjusting nut to the end of the cable rod, thus freeing the parking brake cable.
 - (2) With the engine idling, forcefully depress the brake pedal five or six times and confirm that the pedal stroke stops changing.

NOTE

If the pedal stroke stops changing, the automatic-adjustment mechanism is functioning normally, and the clearance between the shoe and drum is correct.

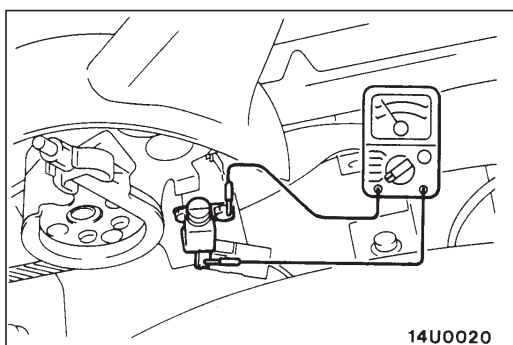


- (3) Turn the adjusting nut to adjust the parking brake lever stroke to the standard value. After adjusting, check that there is no space between the adjusting nut and the parking brake lever. Check that the adjusting nut is also securely held by the nut holder.

Caution

If the parking brake lever stroke is below the standard value and the braking is too firm, the rear brakes may drag.

- (4) After adjusting the parking brake lever stroke, jack up the rear of the vehicle. Release the parking brake and turn the rear wheels to check that the rear brakes are not dragging.



PARKING BRAKE SWITCH CHECK

36100330032

Check for continuity between the parking brake switch terminal and the switch mounting bolt.

When parking brake lever is pulled	Continuity
When parking brake lever is released	No continuity

PARKING BRAKE LEVER

REMOVAL AND INSTALLATION

CAUTION: SRS

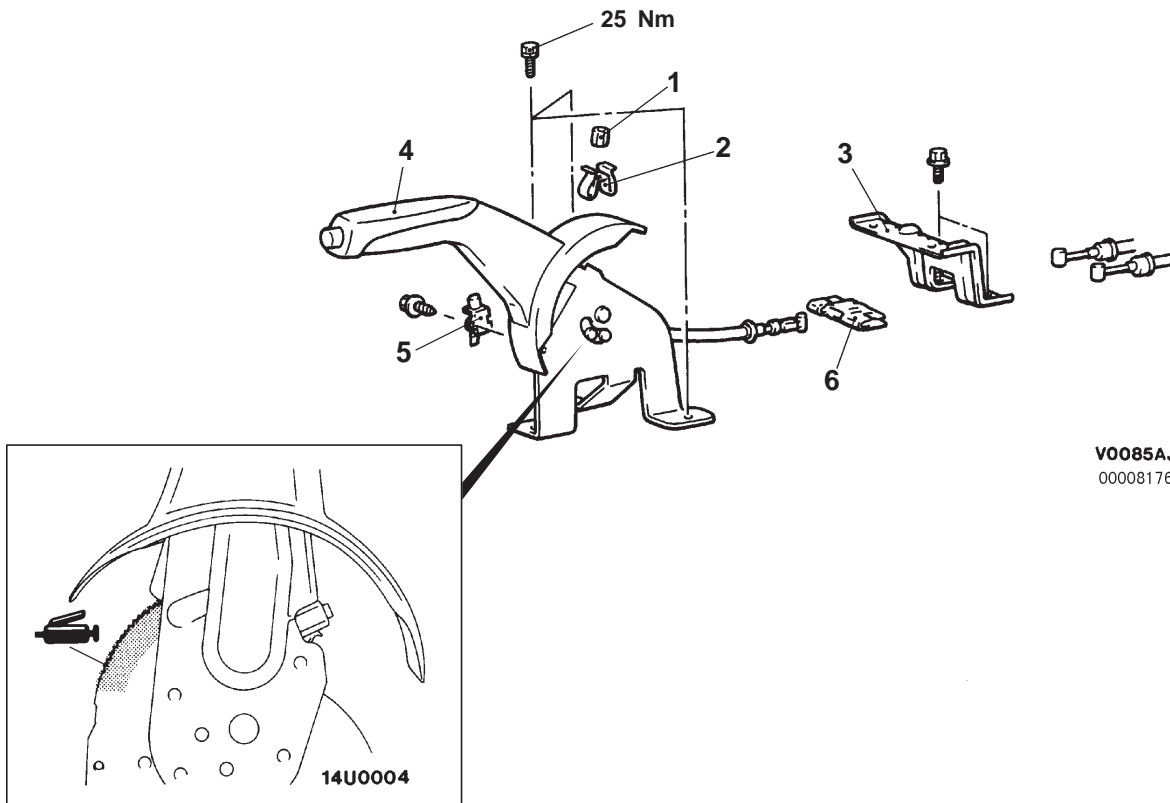
- When removing and installing the floor console, do not let it bump against the SRS-ECU or other components.
- Before removal of SRS-ECU, refer to GROUP52B – SRS-ECU.

Pre-removal Operation

- Floor Console Removal (Refer to GROUP 52A.)

Post-installation Operation

- Parking Brake Lever Stroke Adjustment (Refer to P.36-2.)
- Floor Console Installation (Refer to GROUP 52A.)



Removal steps

1. Adjusting nut
2. Nut holder
3. Bracket
4. Parking brake lever assembly
5. Parking brake switch
6. Cable equalizer

PARKING BRAKE CABLE

36100190302

REMOVAL AND INSTALLATION

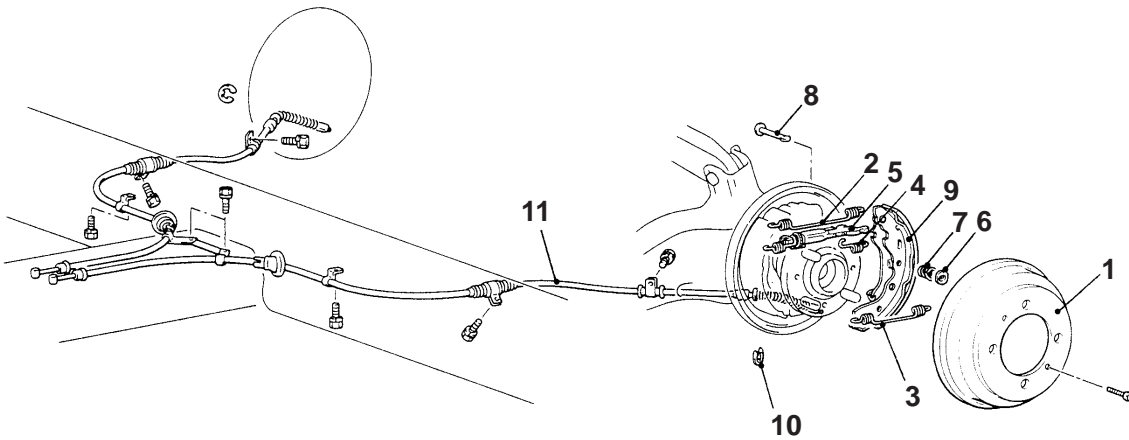
CAUTION: SRS

- When removing and installing the floor console, do not let it bump against the SRS-ECU or other components.
- Before removal of SRS-ECU, refer to GROUP52B – SRS-ECU.

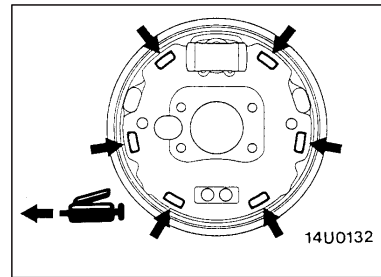
Pre-removal Operation
 Floor Console Removal (Refer to GROUP 52A.)

Post-installation Operation

- Parking Brake Lever Stroke Adjustment (Refer to P.36-2.)
- Floor Console Installation (Refer to GROUP 52A.)



14U0130
 00008177



Brake grease:
 Brake grease SAE J310,
 NLGI No. 1

Removal steps

- | | |
|--|--|
| <ol style="list-style-type: none"> 1. Rear brake drum 2. Return shoe spring 3. Strut retaining spring 4. Retaining shoe spring 5. Auto-adjuster assembly 6. Shoe hold-down cup | <ol style="list-style-type: none"> 7. Shoe hold-down spring 8. Shoe hold-down pin 9. Shoe, lining and lever assembly 10. Clip 11. Parking brake cable |
|--|--|

NOTES

GROUP 36

PARKING BRAKES

GENERAL

OUTLINE OF CHANGES

The service procedures of the parking brakes have been established to correspond to the adoption of the rear disc brakes.

ON-VEHICLE SERVICE

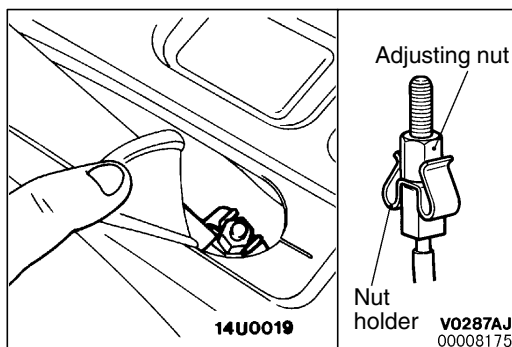
PARKING BRAKE LEVER STROKE CHECK

Check the parking brake lever stroke according to the previous procedure.

Standard value:

5–7 notches [Operation force: Approx. 196N]

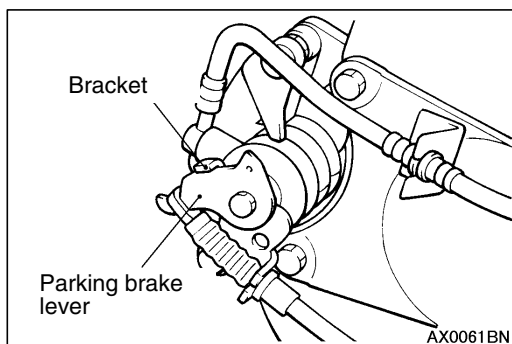
If the parking brake lever stroke is not the standard value, adjust as described below.



1. Loosen the adjusting nut to the end of the cable rod, thus freeing the parking brake cable.
2. With the engine idling, forcefully depress the brake pedal five or six times and confirm that the pedal stroke stops changing.

NOTE

If the pedal stroke stops changing, the automatic-adjustment mechanism is functioning normally, and the clearance between the pad and disc is correct.



3. Check that the parking brake lever on the caliper side is touching the bracket.

NOTE

If the parking brake lever is not touching the bracket, the parking brake cable might be stuck or routed incorrectly, or there might be a problem with the automatic adjustment mechanism inside the rear brake calipers. Therefore, it is necessary to check the parking brake cable and rear brake calipers.

4. Turn the adjusting nut to adjust the parking brake lever stroke to the standard value. After adjusting, check that there is no space between the adjusting nut and the parking brake lever. Check that the adjusting nut is also securely held by the nut holder.

Caution

If the parking brake lever stroke is below the standard value and the braking is too firm, the rear brakes may drag.

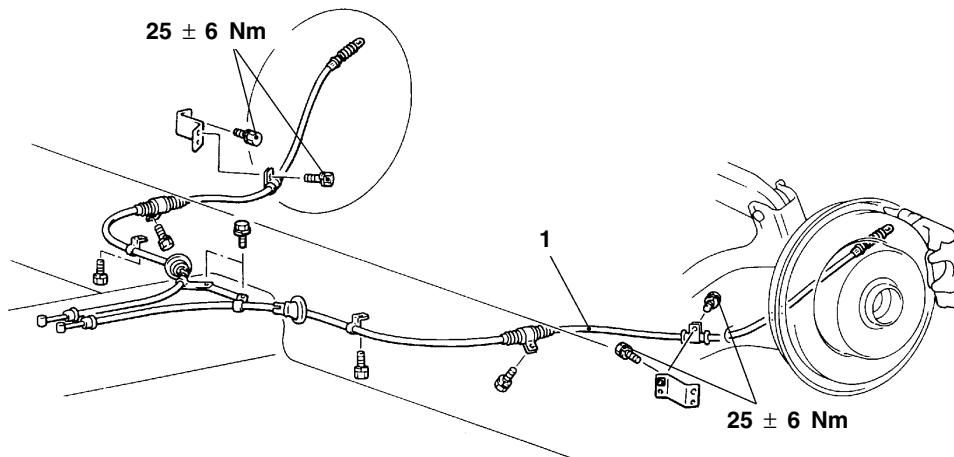
5. After adjusting the parking brake lever stroke, jack up the rear of the vehicle. Release the parking brake and turn the rear wheels to check that the rear brakes are not dragging. In addition, check that the parking brake lever on the caliper side is touching the bracket.

PARKING BRAKE CABLE REMOVAL AND INSTALLATION

Pre-removal Operation Floor Console Removal

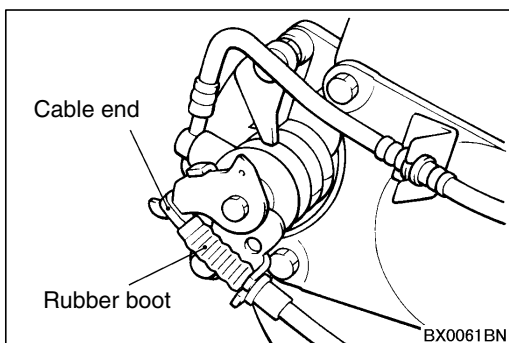
Post-installation Operation

- Parking Brake Lever Stroke Adjustment (Refer to P.36-1.)
- Floor Console Installation



AX0019BN

- A** 1. Parking brake cable



BX0061BN

INSTALLATION SERVICE POINT

A PARKING BRAKE CABLE INSTALLATION

Connect the parking brake cable, and then make sure that the rubber boot is securely engaged with the cable end.