
INTERIOR AND SUPPLEMENTAL RESTRAINT SYSTEM (SRS)

INTERIOR

CONTENTS

52109000460

SERVICE SPECIFICATIONS	3	SEAT*	11
SPECIAL TOOL	3	Front Seat	11
INSTRUMENT PANEL*	3	Rear Seat	14
FLOOR CONSOLE*	8	SEAT BELT	16
TRIMS	9	Front Seat Belt	16
INSIDE REAR VIEW MIRROR	10	Rear Seat Belt	17

WARNINGS REGARDING SERVICING OF SUPPLEMENTAL RESTRAINT SYSTEM (SRS) EQUIPPED VEHICLES

WARNING!

- (1) Improper service or maintenance of any component of the SRS, or any SRS-related component, can lead to personal injury or death to service personnel (from inadvertent firing of the air bag) or to the driver and passenger (from rendering the SRS inoperative).
- (2) Service or maintenance of any SRS component or SRS-related component must be performed only at an authorized MITSUBISHI dealer.
- (3) MITSUBISHI dealer personnel must thoroughly review this manual, and especially its GROUP 52B – Supplemental Restraint System (SRS) before beginning any service or maintenance of any component of the SRS or any SRS-related component.

NOTE

The SRS includes the following components: SRS-ECU, SRS warning lamp, air bag module, clock spring and interconnecting wiring. Other SRS-related components (that may have to be removed/installed in connection with SRS service or maintenance) are indicated in the table of contents by an asterisk (*).

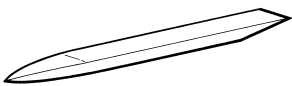
SERVICE SPECIFICATIONS

52100030079

Items	Standard value	
Seatback heater resistance (between terminals) Ω (When ambient temperature is 20°C)	6.84–7.92	
Seat cushion heater resistance (between terminals) Ω (When ambient temperature is 20°C)	Between terminals 1 and 2	0.38–0.44
	Between terminals 2 and 3	6.84–7.92
	Between terminals 1 and 3	6.46–7.48

SPECIAL TOOL

52100060214

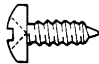
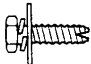
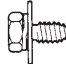
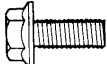
Tool	Number	Name	Use
	MB990784	Ornament remover	Removal of switch, trim, etc.

INSTRUMENT PANEL

52100170375

REMOVAL AND INSTALLATION

For installation of the instrument panel, the bolts and screws described below are used. They are indicated by symbols in the illustration.

Name	Symbol	Size mm (D × L)	Colour	Shape
Tapping screw	a	5 × 10	–	 19Z0026
	b	5 × 16		
	c	4.8 × 13		
	d	4.8 × 16	Black	
Washer assembled bolt	e	6 × 12	–	 19Z0005
	f	6 × 16		
Gimlet bolt	g	6 × 16		 19Z0012
Flange bolt	h	5 × 16		 19Z0024
	i	6 × 14.29		
	j	6 × 16		
	k	6 × 20		

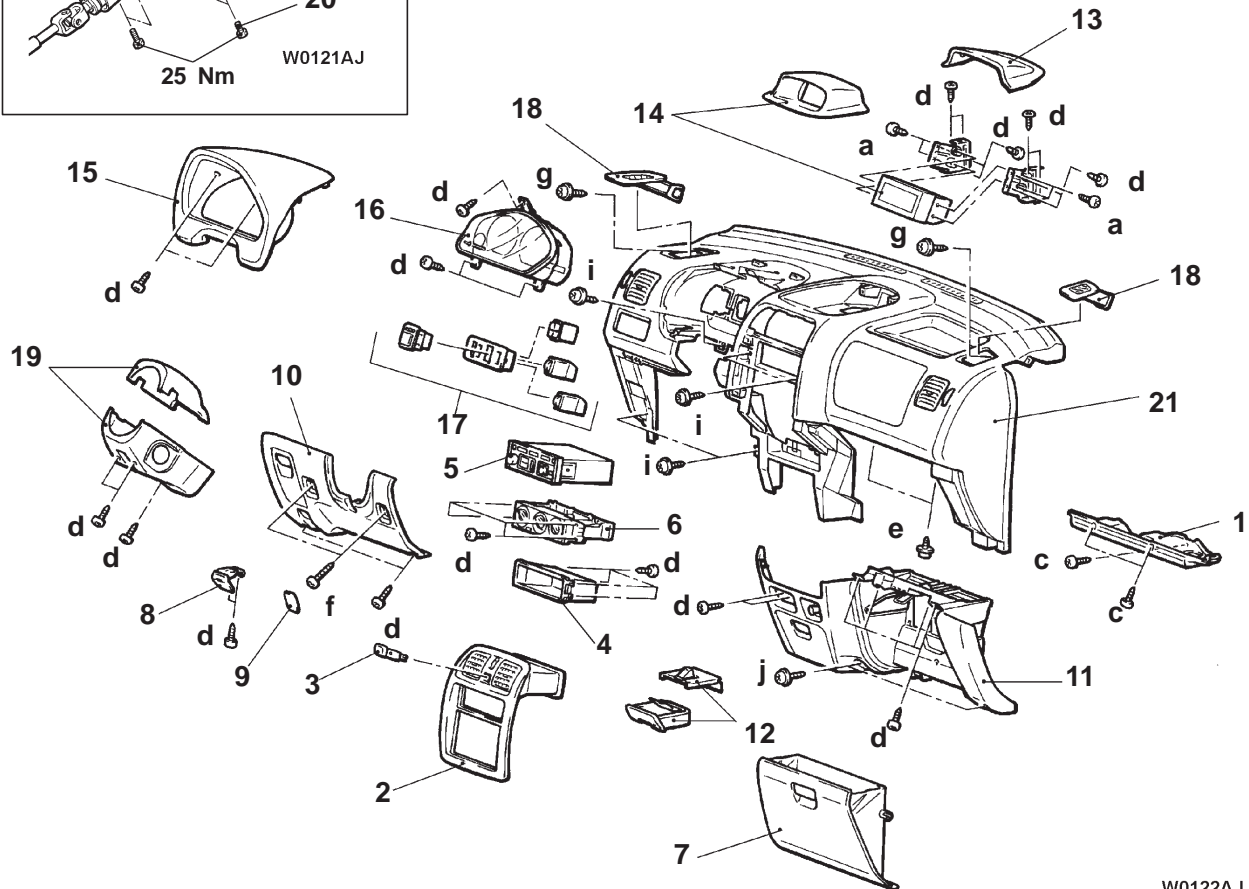
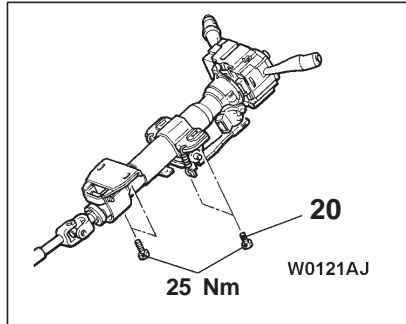
D = Thread diameter
L = Effective thread length

CAUTION: SRS

- (1) When removing and installing the floor console (vehicles equipped with SRS), do not let it bump against the SRS-ECU.
- (2) For the passenger side air bag module removal/installation, always observe the service procedures of GROUP 52B – Air Bag Module and Clock Spring.

Pre-removal and Post-installation Operation

- Floor Console Assembly Removal and Installation (Refer to P.52A-8.)

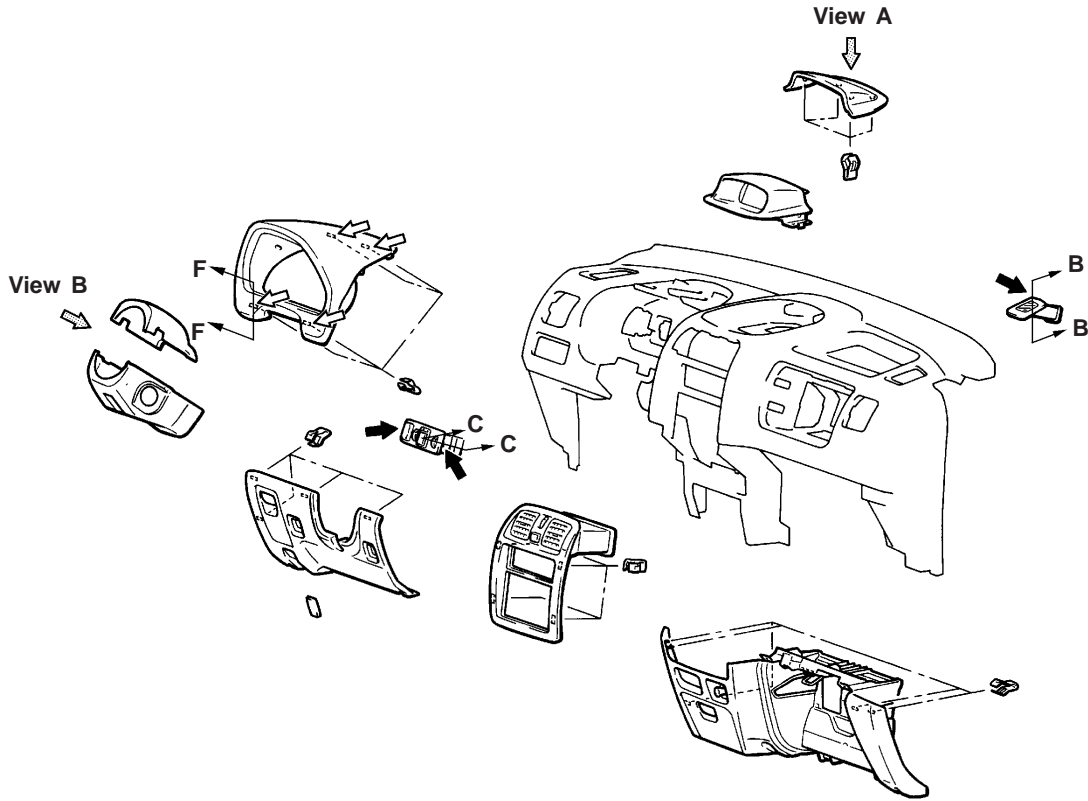


W0122AJ

Removal steps

- | | |
|---|--|
| <ul style="list-style-type: none"> 1. Under cover 2. Center panel assembly 3. Hazard warning lamp switch 4. Accessory box 5. Radio and tape player or bracket 6. Heater control assembly 7. Glove box 8. Hood lock release handle 9. Driver's side lower plug 10. Driver's side lower panel assembly 11. Passenger's side lower panel assembly 12. Ashtray assembly | <ul style="list-style-type: none"> 13. Multi display unit cover 14. Multi display unit assembly 15. Meter bezel 16. Combination meter 17. Instrument panel switch 18. Side defroster grille <ul style="list-style-type: none"> • Front pillar trim (Refer to P.52A-9.) 19. Column cover 20. Steering column assembly installation bolts 21. Instrument panel assembly |
|---|--|

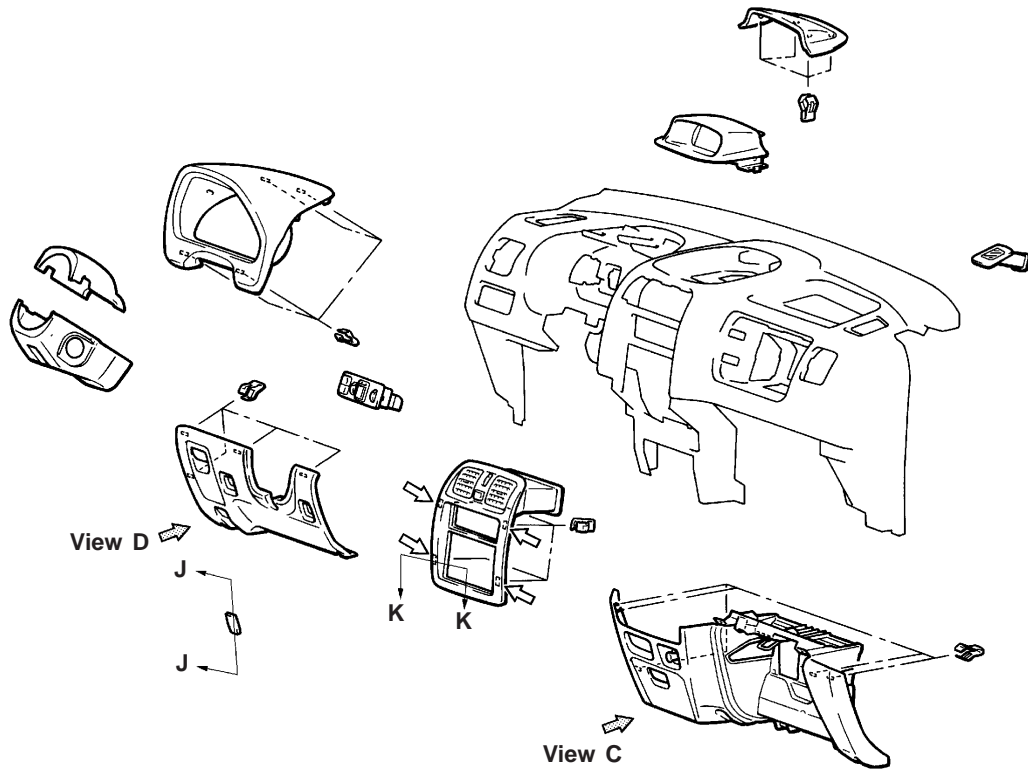
CLIP AND CLAW POSITIONS



NOTE
 :Clip position
 :Claw position

W0123AJ
00008643

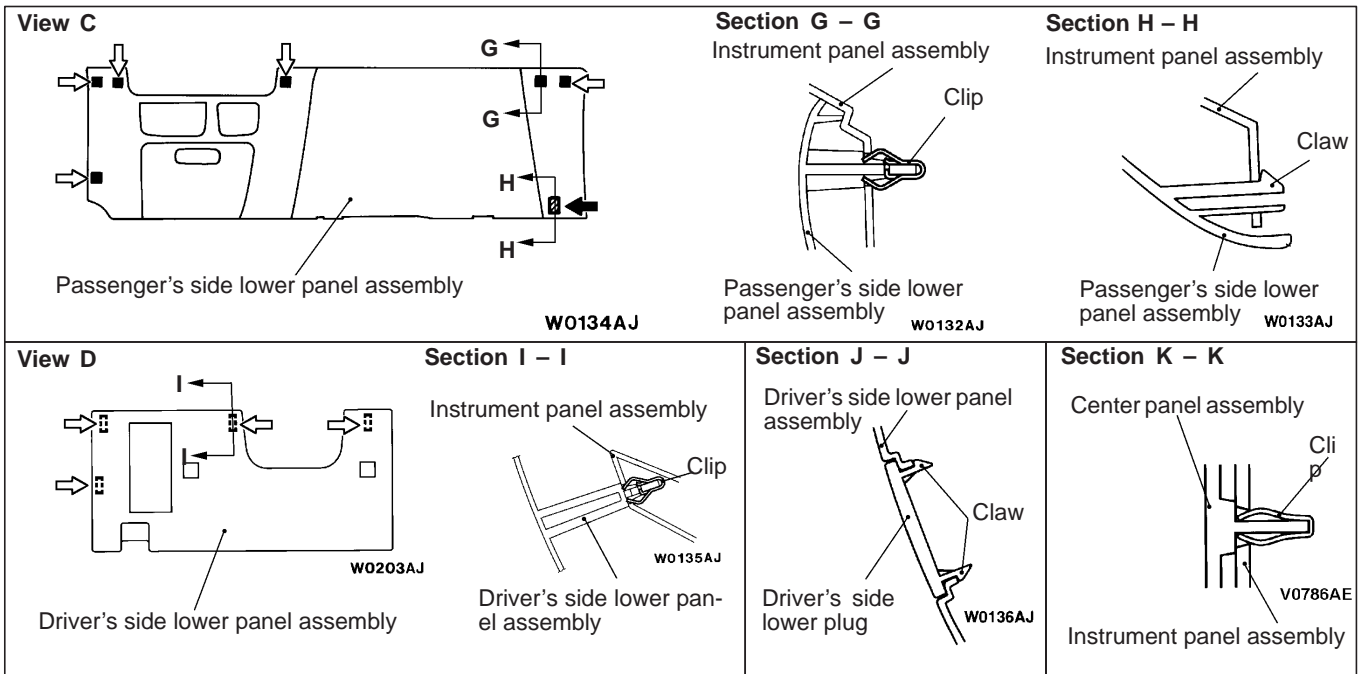
<p>View A</p> <p>Multi display unit cover</p> <p>W0124AJ</p>	<p>Section A – A</p> <p>Multi display unit cover</p> <p>Instrument panel assembly</p> <p>Clip</p> <p>W0125AJ</p>	<p>Section B – B</p> <p>Side defroster grille</p> <p>Instrument panel assembly</p> <p>Claw</p> <p>W0126AJ</p>	<p>Section C – C</p> <p>Instrument panel switch assembly</p> <p>Instrument panel assembly</p> <p>Claw</p> <p>V0875AE</p>
<p>View B</p> <p>Column cover lower</p> <p>W0128AJ</p>	<p>Section D – D</p> <p>Column cover upper</p> <p>Instrument panel assembly</p> <p>Claw</p> <p>Column cover lower</p> <p>W0129AJ</p>	<p>Section E – E</p> <p>Claw</p> <p>V0877AE</p>	<p>Section F – F</p> <p>Meter bezel assembly</p> <p>Instrument panel assembly</p> <p>Clip</p> <p>V0786AE</p>



NOTE

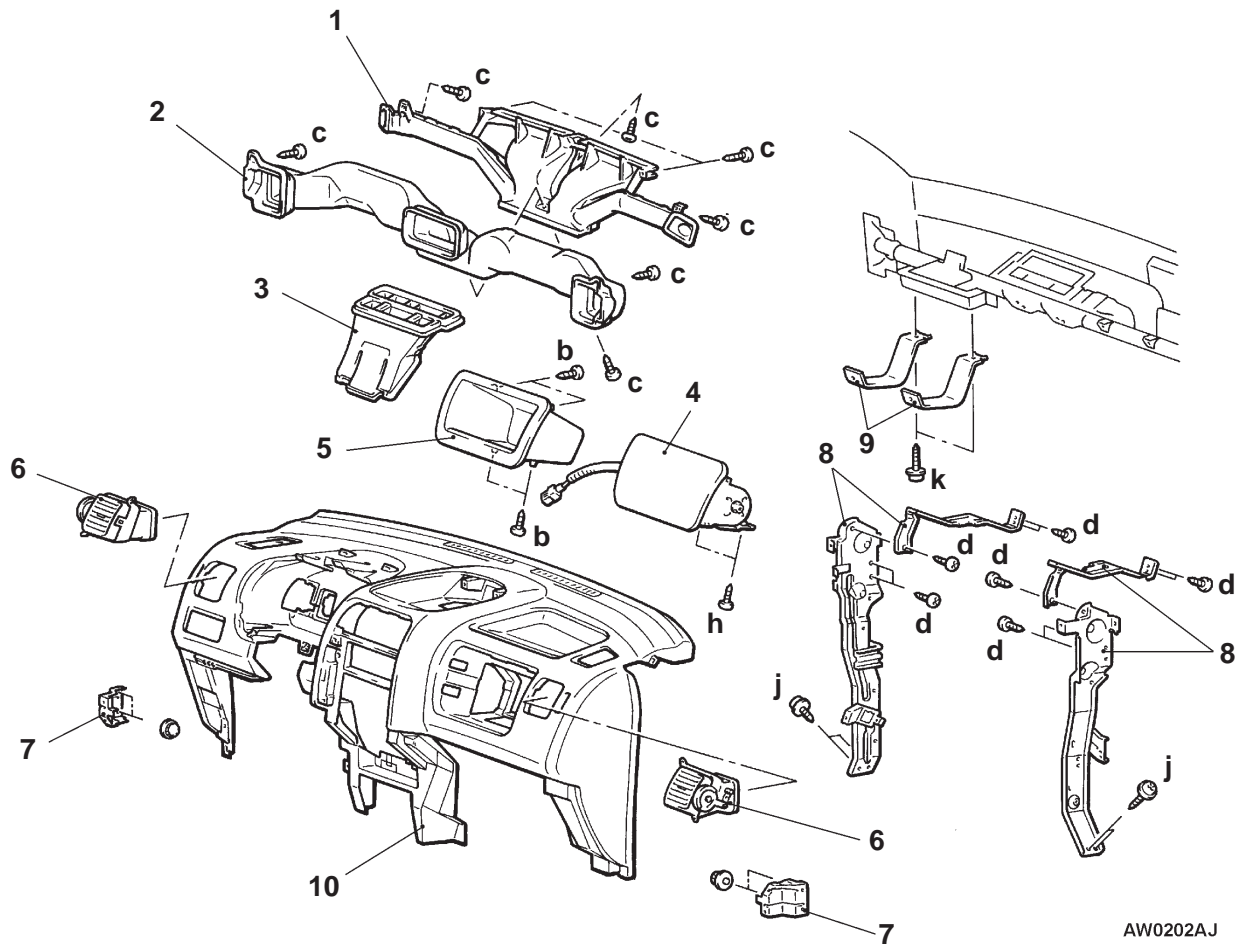
- ↔ :Clip position
- ➔ :Claw position

W0123AJ
0008644



DISASSEMBLY AND REASSEMBLY

5210019 0289



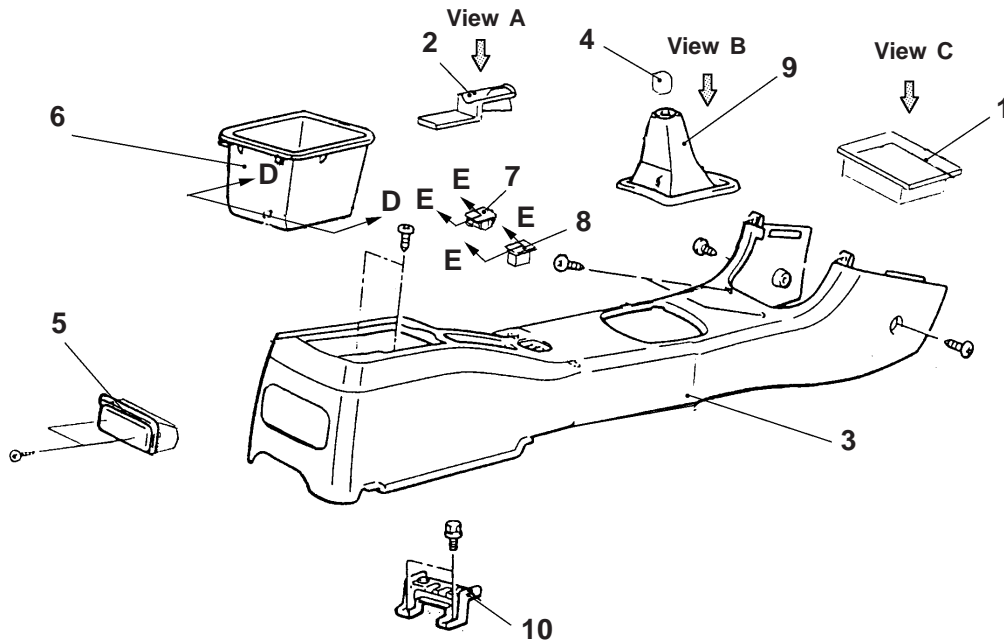
AW0202AJ

Disassembly steps

- | | |
|--|--|
| <ul style="list-style-type: none"> 1. Defroster nozzle assembly 2. Distribution duct 3. Center ventilation duct 4. Passenger's air bag module assembly 5. Glove box upper | <ul style="list-style-type: none"> 6. Side air outlet assembly 7. Instrument panel lower bracket 8. Instrument panel center reinforcement 9. Instrument panel absorber 10. Instrument panel |
|--|--|

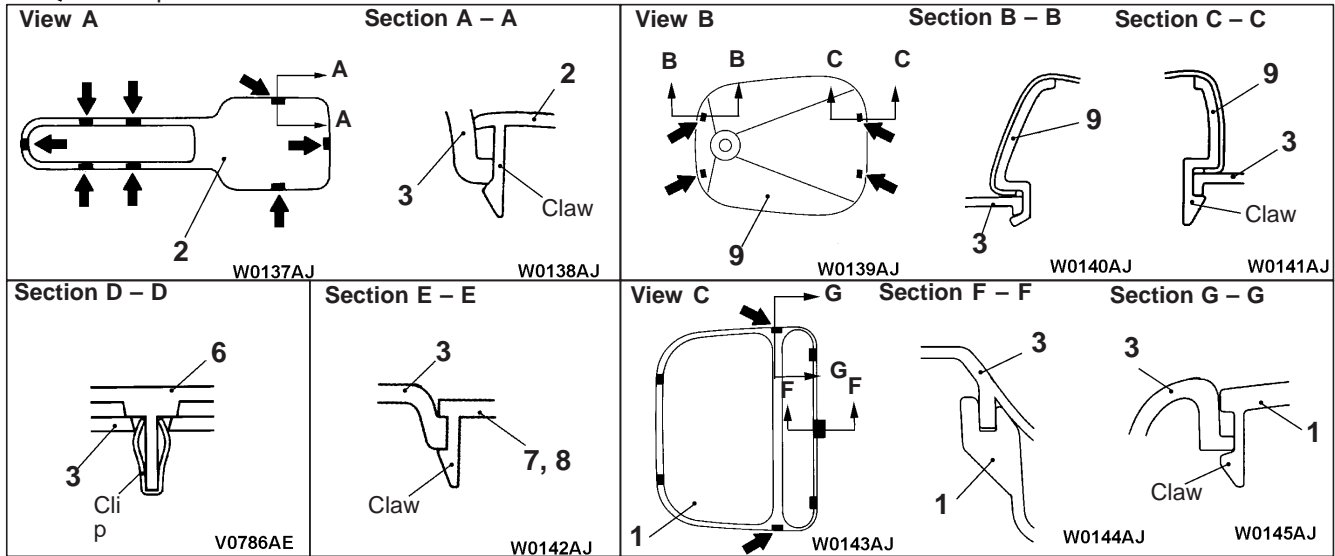
**FLOOR CONSOLE
REMOVAL AND INSTALLATION**

52100220261



W0146AJ
00008645

NOTE
← :Claw position



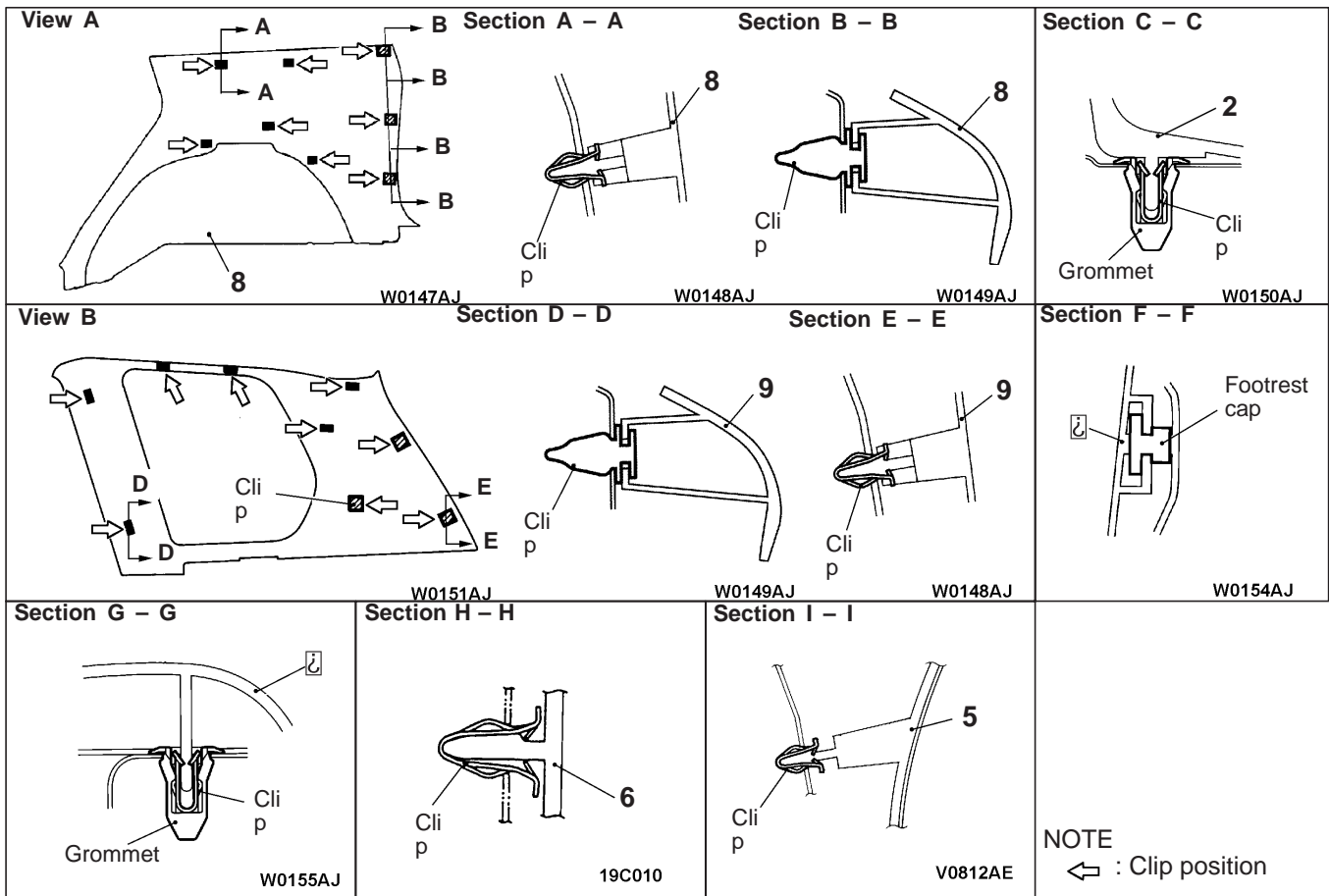
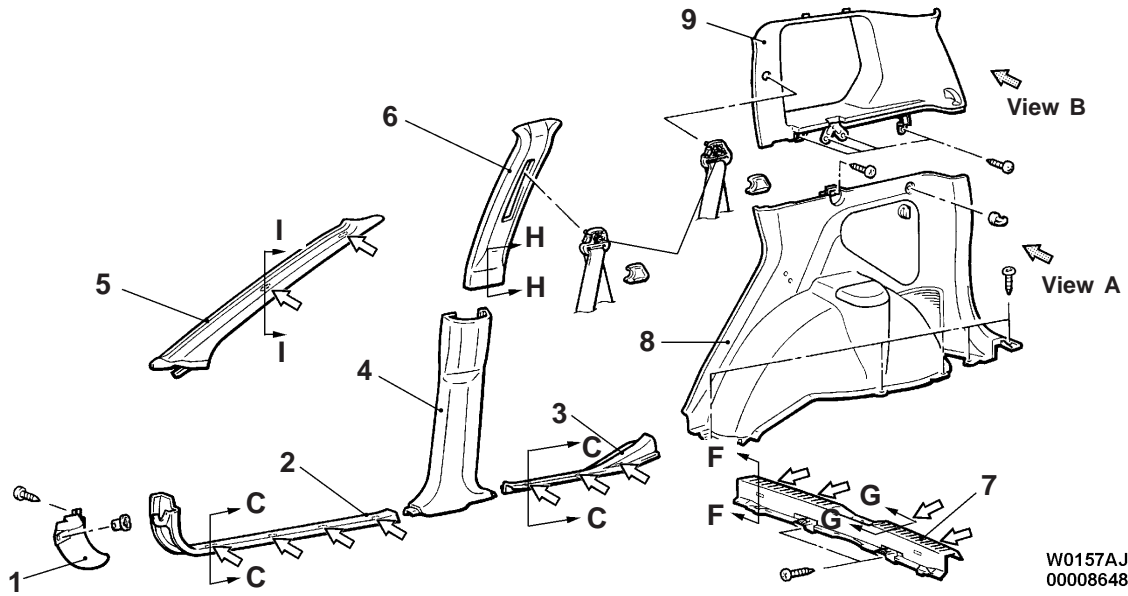
Removal steps

- | | |
|---------------------------|----------------------------|
| 1. Console tray | 6. Front floor console box |
| 2. Parking brake panel | 7. Coin plug |
| 3. Floor console assembly | 8. Heater seat switch |
| 4. Shift lever knob | 9. Shift cover assembly |
| 5. Ashtray assembly | 10. Rear console bracket |

TRIMS

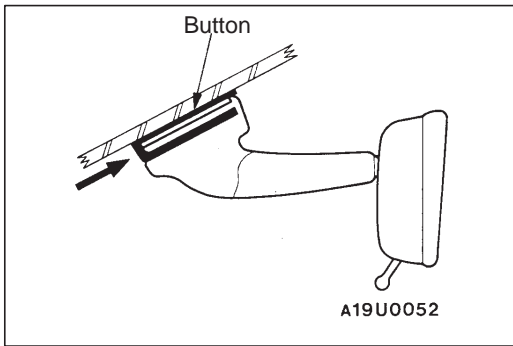
52100110377

REMOVAL AND INSTALLATION



1. Cowl side trim
2. Front scuff plate
3. Rear scuff plate
4. Center pillar lower trim
5. Front pillar trim
6. Center pillar upper trim

7. Rear end trim cover
8. Quarter lower trim
9. Quarter upper trim



INSIDE REAR VIEW MIRROR

52100270013

REMOVAL SERVICE POINT

Remove by pushing in the direction of the arrow in the illustration.

SEAT

FRONT SEAT

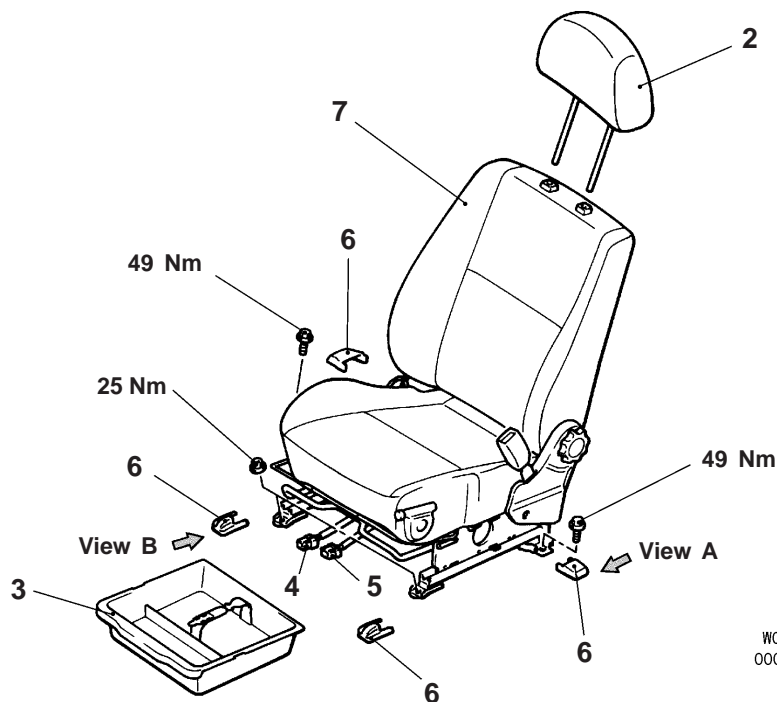
REMOVAL AND INSTALLATION

Pre-removal and Post-installation Operation

- Floor Console Assembly Removal and Installation (Refer to P.52A-8).

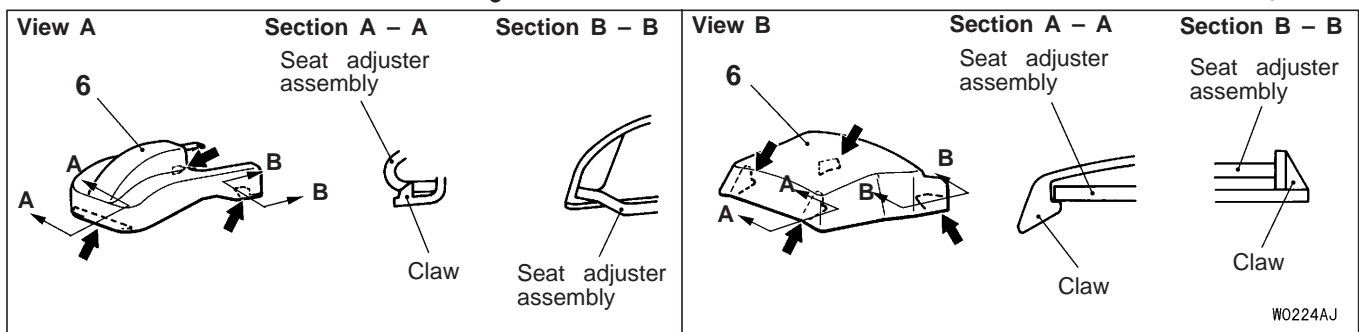
CAUTION: SRS

When removing and installing the rear floor console (vehicles equipped with SRS), do not let it bump against the SRS-ECU.



W0219AJ
00009203

NOTE
← :Claw position



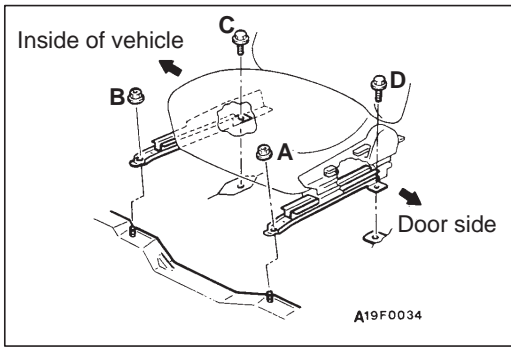
NOTE
After provisionally tightening the seat assembly mounting nuts and bolts in every installation location, fully tighten them to the specified torque.

1. Heated seat switch
<vehicles with heated seat>
2. Headrestant

Front seat assembly removal steps

3. Seat under tray
<vehicles with seat under tray>

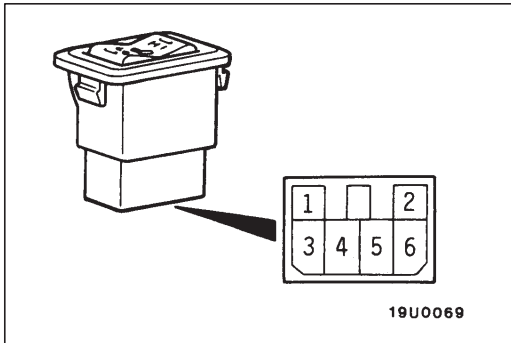
4. Harness connector
<vehicles with heated seat>
5. Harness connector
<vehicles with side air bag>
6. Seat anchor cover
7. Front seat assembly



INSTALLATION SERVICE POINT

▶A◀ FRONT SEAT ASSEMBLY INSTALLATION

Tighten the front seat mounting bolts in the order A, B, C, and D.



INSPECTION

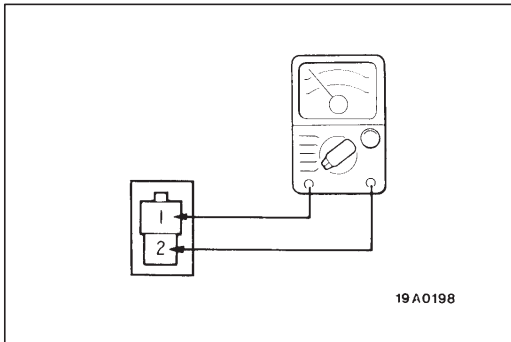
52200390064

HEATED SEAT SWITCH CONTINUITY CHECK

Switch position	Terminal No.								
	1	4	-	5	-	6	2	-	3
HI	○	○	⊕	○	⊖	○			
		⊖	⊕	⊕		⊖			
	⊖		⊕	⊕					
		⊖		⊕		⊕			
LO		⊖		⊕		⊕	○	⊕	○
		○		○		⊖			
	⊖		⊕	⊕					
OFF	⊖		⊕	⊕					

NOTE

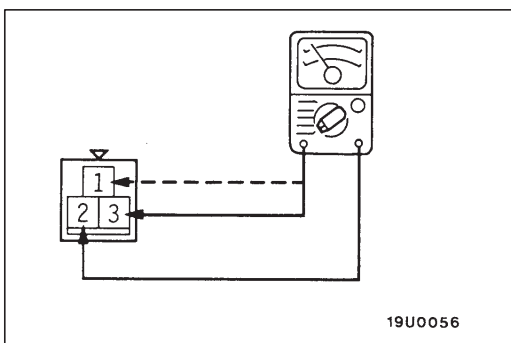
To inspect the diode, match the polarity of the circuit tester with the (+) (-) polarities in the table.



SEATBACK HEATER CHECK

Measure the resistance between terminals.

Standard value (When ambient temperature is 20°C):
Between terminals 6.84–7.92 Ω



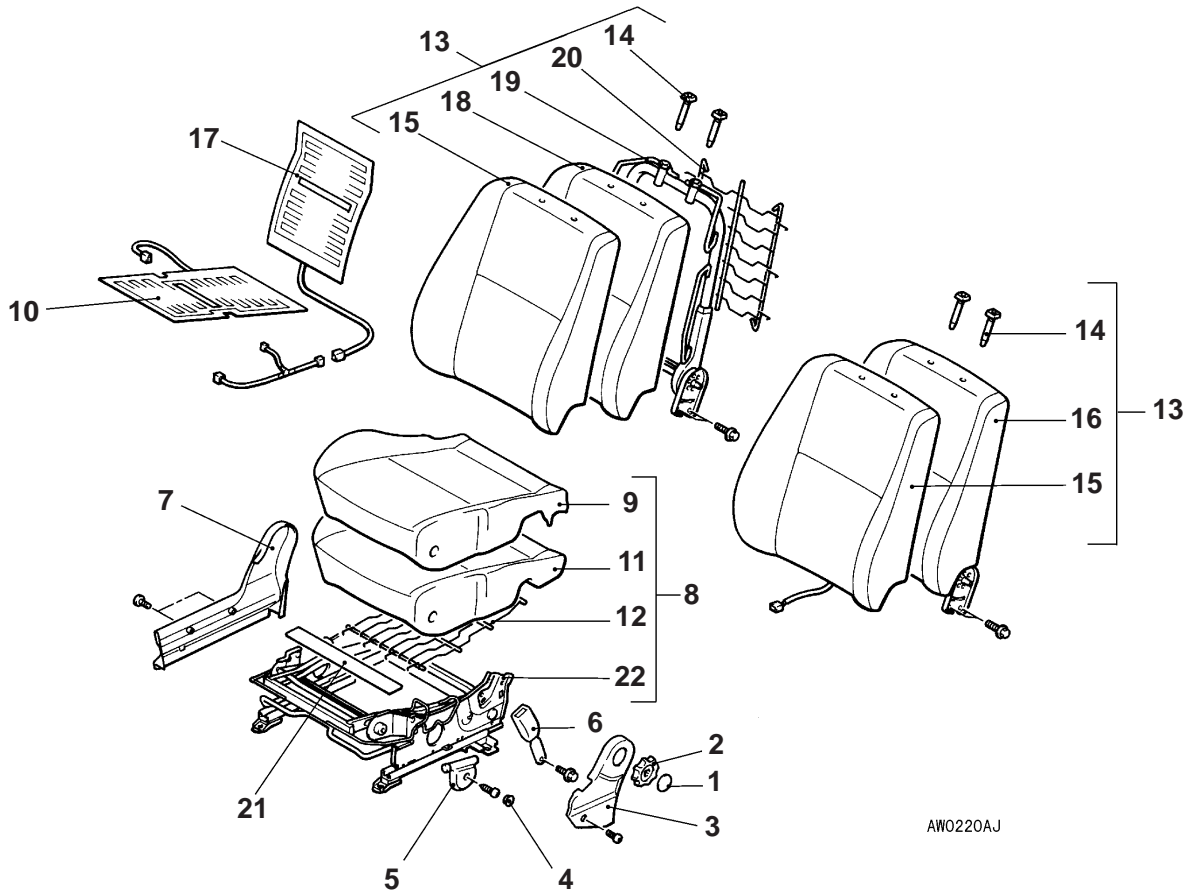
SEAT CUSHION HEATER CHECK

Measure the resistance between terminals.

Standard value (When ambient temperature is 20°C):
Between terminals 1 and 2 0.38–0.44 Ω
Between terminals 2 and 3 6.84–7.92 Ω
Between terminals 1 and 3 6.46–7.48 Ω

DISASSEMBLY AND REASSEMBLY

52200150372



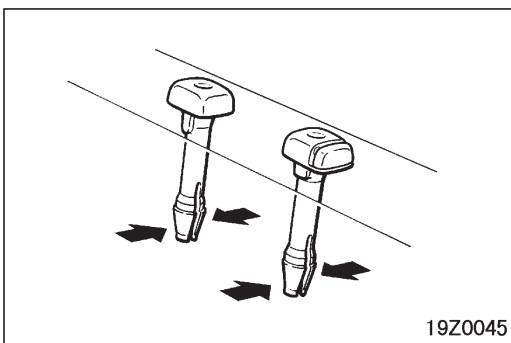
AW0220AJ

Seat disassembly steps

1. Reclining knob cap
2. Reclining knob
3. Front seat inner cover
4. Cap
5. Autolock operating handle
6. Front inner seat belt
7. Inner shield cover
8. Front seat cushion assembly
9. Front seat cushion cover
10. Front seat heater cushion
11. Front seat cushion pad
12. Suspension cushion



13. Seatback assembly
14. Headrest guide
15. Seatback cover
16. Seatback pad and flame assembly
<vehicles with side air bag>
17. Seat heater back
18. Seatback pad
19. Seatback flame
20. Suspension back
21. Felt protection
22. Seat adjuster assembly

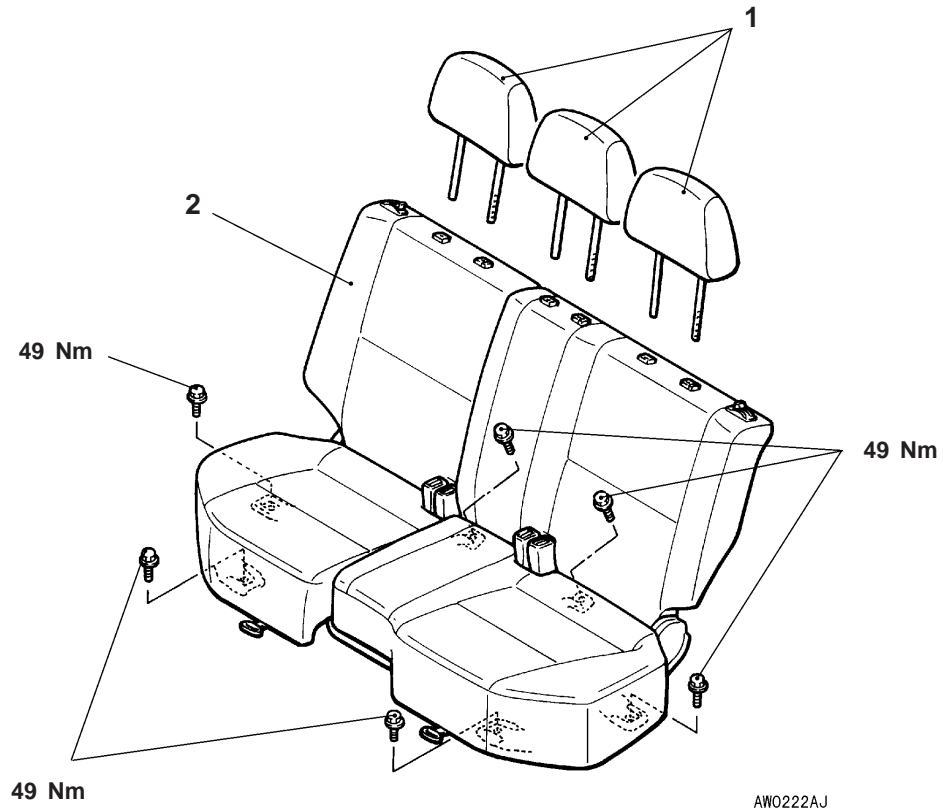


REMOVAL SERVICE POINT

◀A▶ HEADRESTRAINT GUIDE REMOVAL

**REAR SEAT
REMOVAL AND INSTALLATION**

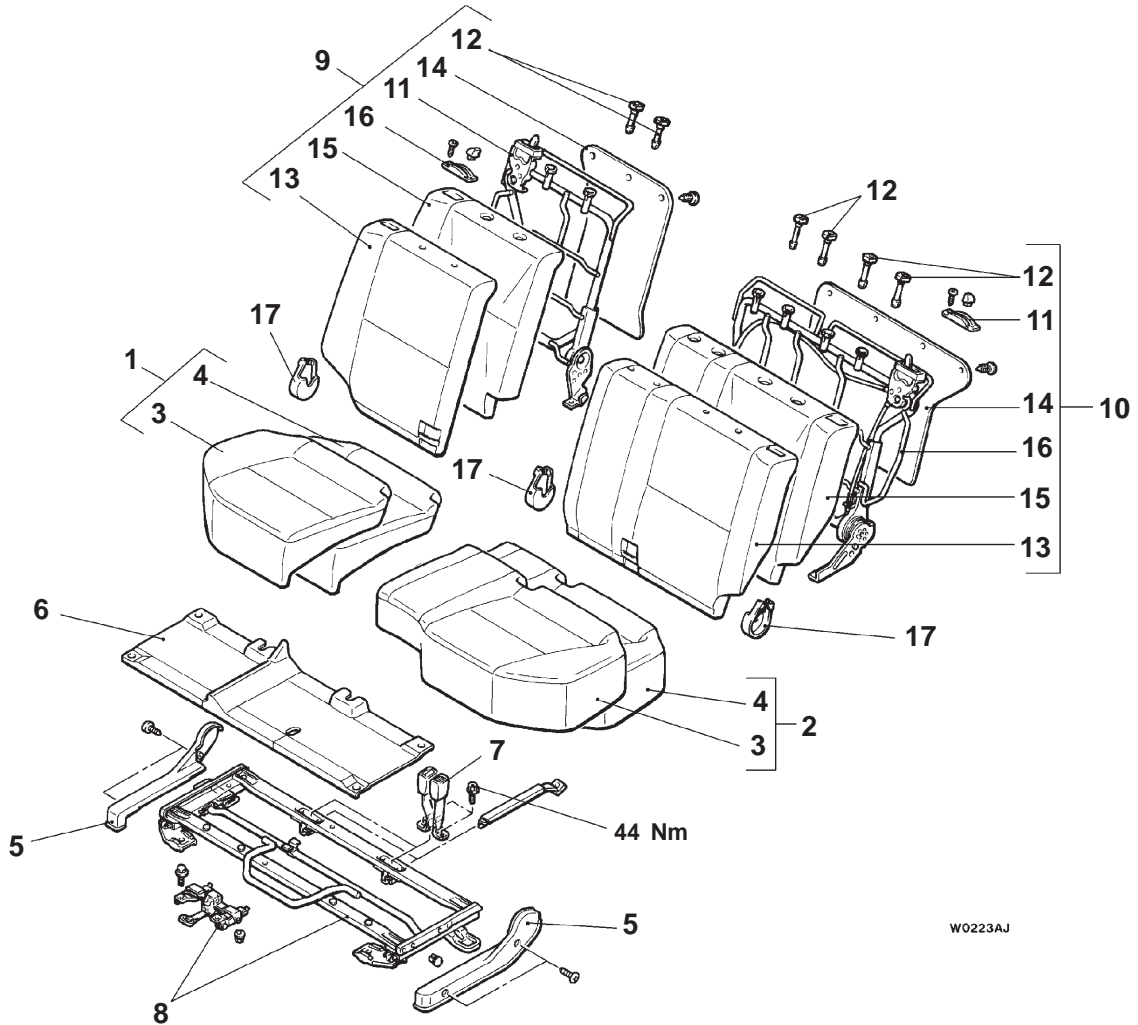
52200180319

**Removal steps**

1. Headrest
2. Rear seat assembly

DISASSEMBLY AND REASSEMBLY

52200200138

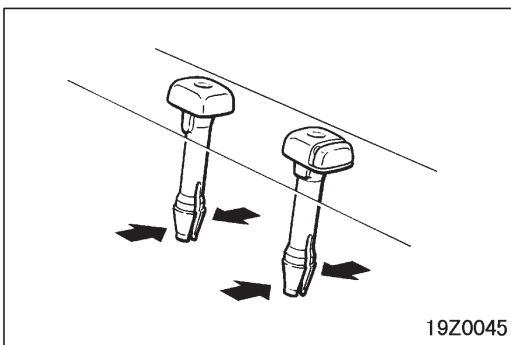


Seat disassembly steps

- | | | |
|---|------------|---|
| <ul style="list-style-type: none"> 1. Seat cushion assembly <R.H.> 2. Seat cushion assembly <L.H.> 3. Seat cushion cover 4. Seat cushion pad assembly 5. Outer shield cover 6. Slide structure carpet 7. Center seat belt assembly 8. Seat cushion adjuster 9. Seat back assembly <R.H.> | <p>◀A▶</p> | <ul style="list-style-type: none"> 10. Seat back assembly <L.H.> 11. Inner control cover 12. Headrest guide 13. Seatback cover 14. Seatback plate 15. Seatback pad 16. Seatback adjuster 17. Inner shield cover |
|---|------------|---|

REMOVAL SERVICE POINT

◀A▶ HEADRESTRAINT GUIDE REMOVAL

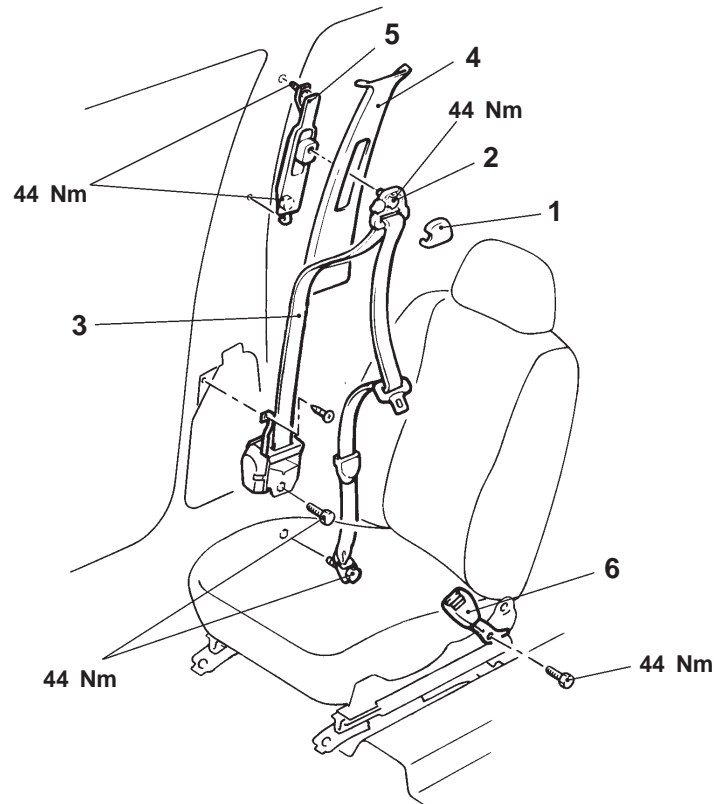


SEAT BELT

52300130324

For removal and installation procedures for the seat belt with pre-tensioner, refer to GROUP 52B – Seat Belt with Pre-tensioner.

FRONT SEAT BELT REMOVAL AND INSTALLATION



AW0230AJ

Outer seat belt removal steps

- Front scuff plate and rear scuff plate
(Refer to P.52A-9.)
- Center pillar lower trim
(Refer to P.52A-9.)
- 1. Sash guide cover
- 2. Sash guide
- 3. Outer seat belt
- 4. Center pillar upper trim
(Refer to P.52A-9.)
- 5. Adjustable seat belt anchor

Inner seat belt removal steps

- Front seat assembly
(Refer to P.52A-11.)
- Front seat inner cover
(Refer to P.52A-13.)
- 6. Inner seat belt

NOTES

INTERIOR

CONTENTS

GENERAL	3	INSTRUMENT PANEL*	3
Outline of Changes	3	SEAT*	5

WARNINGS REGARDING SERVICING OF SUPPLEMENTAL RESTRAINT SYSTEM (SRS) EQUIPPED VEHICLES

WARNING!

- (1) **Improper service or maintenance of any component of the SRS, or any SRS-related component, can lead to personal injury or death to service personnel (from inadvertent firing of the air bag) or to the driver (from rendering the SRS inoperative).**
- (2) **Service or maintenance of any SRS component or SRS-related component must be performed only at an authorized MITSUBISHI dealer.**
- (3) **MITSUBISHI dealer personnel must thoroughly review this manual, and especially its GROUP 52B – Supplemental Restraint System (SRS) before beginning any service or maintenance of any component of the SRS or any SRS-related component.**

NOTE

The SRS includes the following components: front impact sensors, SRS-ECU, SRS warning lamp, air bag module, clock spring and interconnecting wiring. Other SRS-related components (that may have to be removed/installed in connection with SRS service or maintenance) are indicated in the table of contents by an asterisk (*).

GENERAL


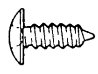
OUTLINE OF CHANGE

The service procedures have been established due to the following changes.

- The shape of the center panel has been changed.
- Arm rests have been adopted to the front seats and the rear seats.

INSTRUMENT PANEL

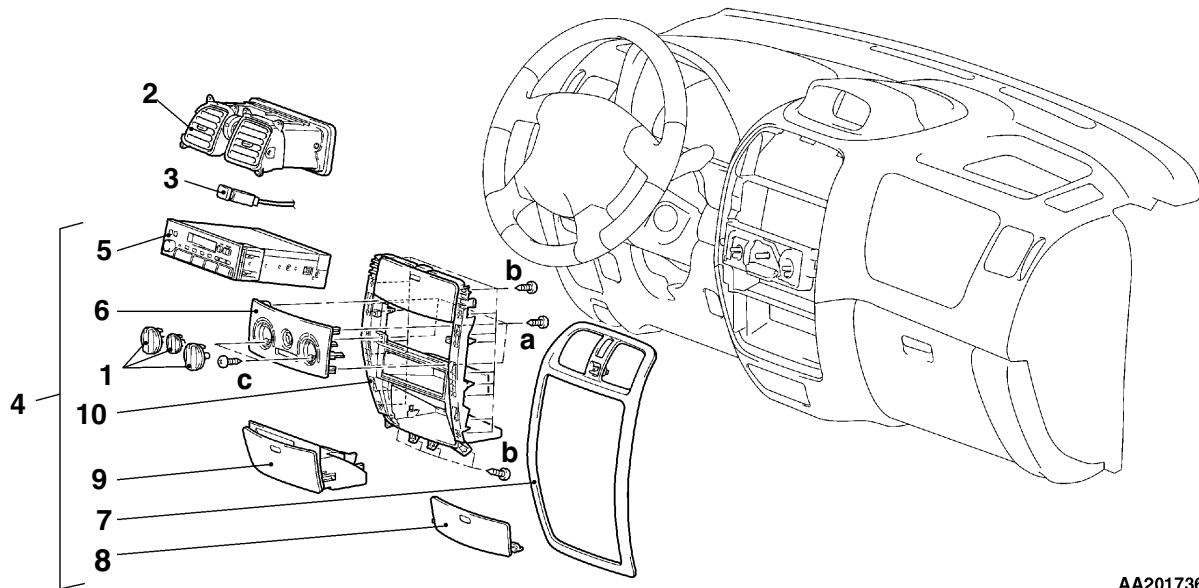
For installation of the instrument panel, the screws described below is used. This is indicated by symbols in the illustration.

Name	Symbol	Size mm (D × L)	Colour	Shape
Tapping screw	a		–	 19Z0026
	b	2.9 × 9.5	–	 19Z0004
	c	4 × 16	–	

D: Thread diameter

L: Effective thread length

REMOVAL AND INSTALLATION



AA201736

Removal steps

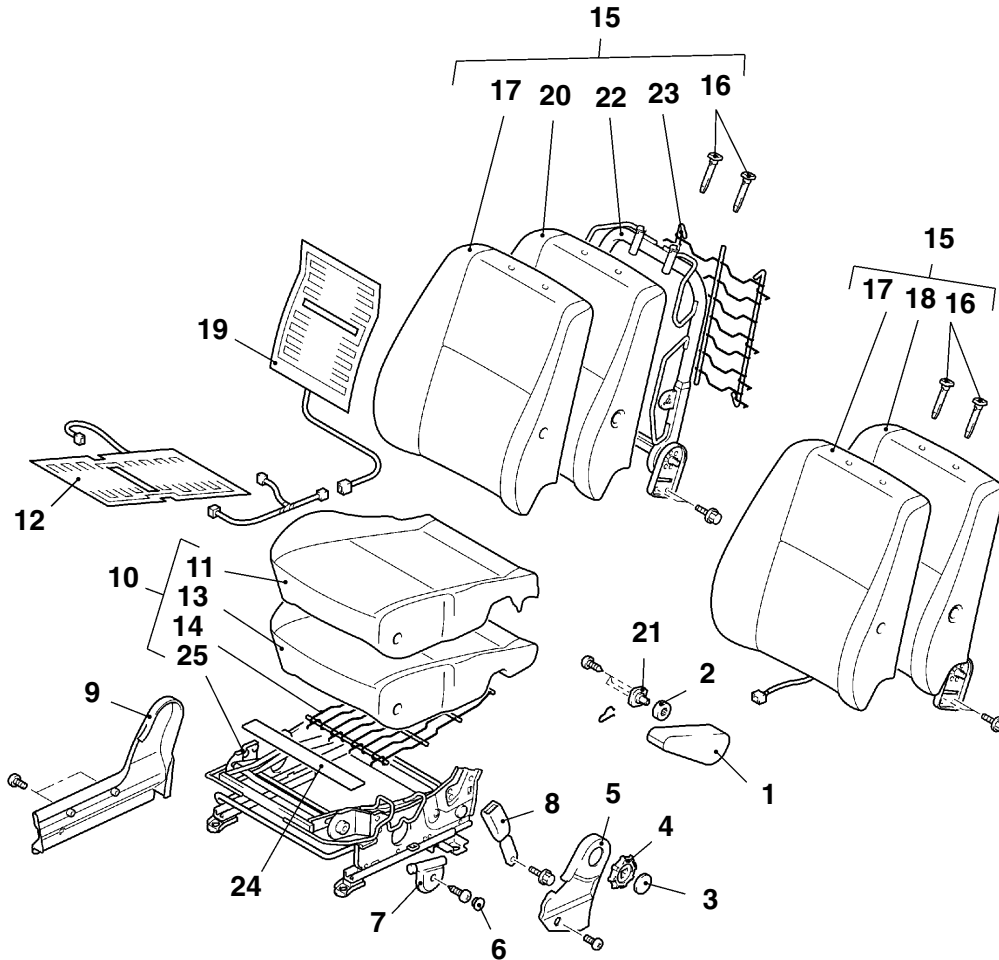
1. Knob
2. Air outlet
3. Hazard warning lamp switch
4. Center panel assembly
5. Radio and tape player

6. Heater control panel
7. Center panel cover
8. Storage box lid
9. Ashtray assembly
10. Center panel frame

SEAT

FRONT SEAT

DISASSEMBLY AND REASSEMBLY



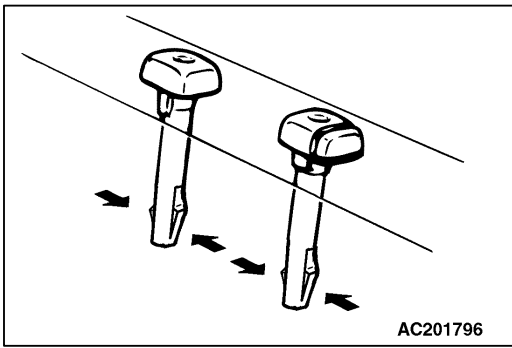
AAC201674

Disassembly steps

1. Arm rest
2. Arm rest cover
3. Reclining knob cap
4. Reclining knob
5. Seat inner cover
6. Cap
7. Autolock operation handle
8. Inner seat belt
9. Inner shield cover
10. Seat cushion assembly
11. Seat cushion cover
12. Seat cushion heater
13. Seat cushion pad



14. Cushion suspension
15. Seatback assembly
16. Headrest guide
17. Seatback cover
18. Seatback pad and flame assembly
<Vehicles with side air bag>
19. Seatback heater
20. Seatback pad
21. Arm rest mechanism
22. Seatback flame
23. Seatback suspension
24. Felt protection
25. Seat adjuster assembly



DISASSEMBLY SERVICE POINT

◀A▶ HEADRESTRAINT GUIDE

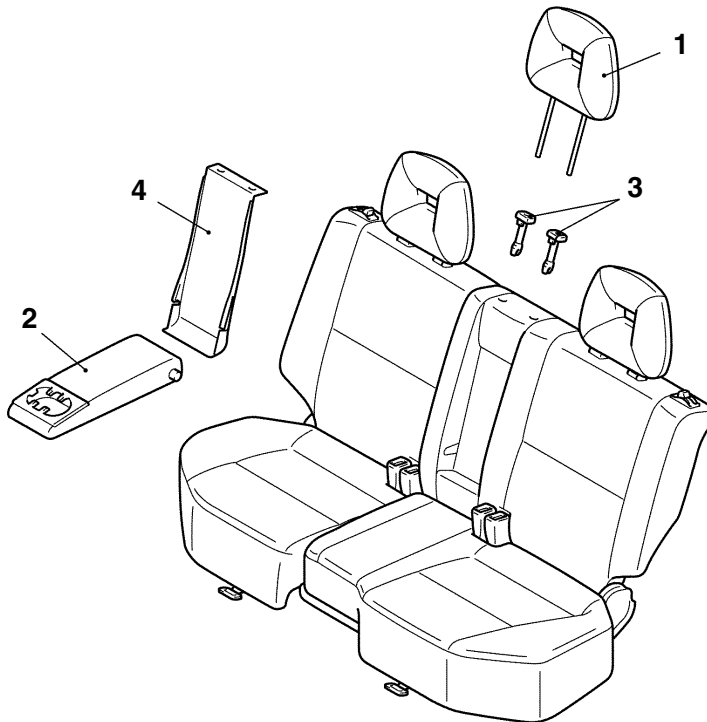
REASSEMBLY SERVICE POINT

▶A◀ SEATBACK COVER

Slit the seatback cover so that the arm rest can be engaged with its mechanism.

REAR SEAT

REMOVAL AND INSTALLATION



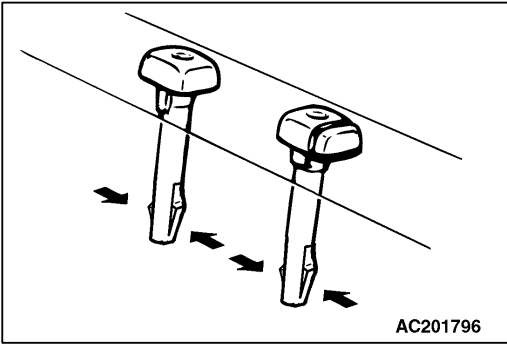
AAC201672

Removal steps

1. Headrest
2. Arm rest



3. Headrest guide
4. Arm rest panel



REMOVAL SERVICE POINT

◀A▶ HEADRESTRAINT GUIDE

NOTES