
INTAKE AND EXHAUST

CONTENTS

GENERAL	2	INTAKE MANIFOLD <4G93-GDI>	6
SERVICE SPECIFICATION	2	INTAKE MANIFOLD <4G13-MPI>	7
SPECIAL TOOL	2	INTAKE MANIFOLD AND EXHAUST MANIFOLD <F9Q1>	8
ON-VEHICLE SERVICE <F9Q1>	2	EXHAUST MANIFOLD <4G13-MPI>	9
Waste Gate Actuator Check	2	TURBOCHARGER <F9Q1>	10
Turbocharger Waste Gate Solenoid Check	3	EXHAUST PIPE AND MAIN MUFFLER	11
AIR CLEANER <F9Q1>	4		
INTERCOOLER <F9Q1>	5		

GENERAL

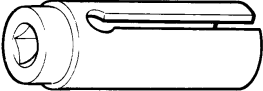
OUTLINE OF CHANGES

- The service procedures have been established due to the adoption of the intake manifold made of resin for the 4G93-GDI engine and the change of the exhaust pipe.
- The service procedures have been established due to the adoption of the intake manifold made of steel pipe for the 4G13-MPI engine and the exhaust manifold incorporated with the catalytic converter.
- The service procedures have been established due to the introduction of the F9Q1 diesel engine. Other service procedures are the same as before.

SERVICE SPECIFICATION

Item	Standard value
Turbocharger waste gate solenoid coil resistance Ω (at 25°C)	15.5 – 17.5

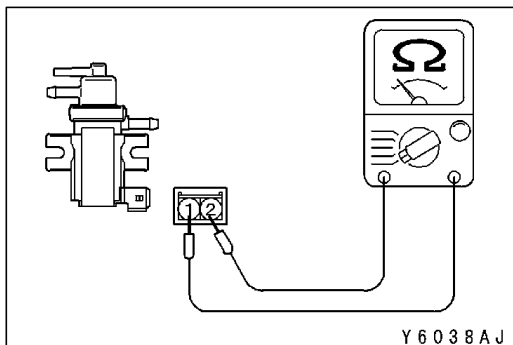
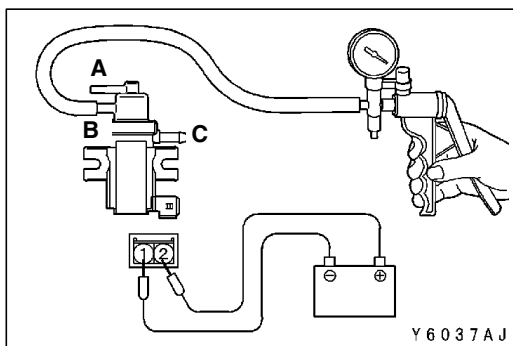
SPECIAL TOOL

Tool	Number	Name	Use
	MD998770	Oxygen sensor wrench	Removal/Installation of oxygen sensor

ON-VEHICLE SERVICE <F9Q1>

WASTE GATE ACTUATOR CHECK

1. Disconnect the vacuum hose from the waste gate actuator nipple.
2. Connect a hand vacuum pump to the nipple.
3. Check the rod for smooth movement as vacuum pressure is gradually applied.



TURBOCHARGER WASTE GATE SOLENOID CHECK

NOTE

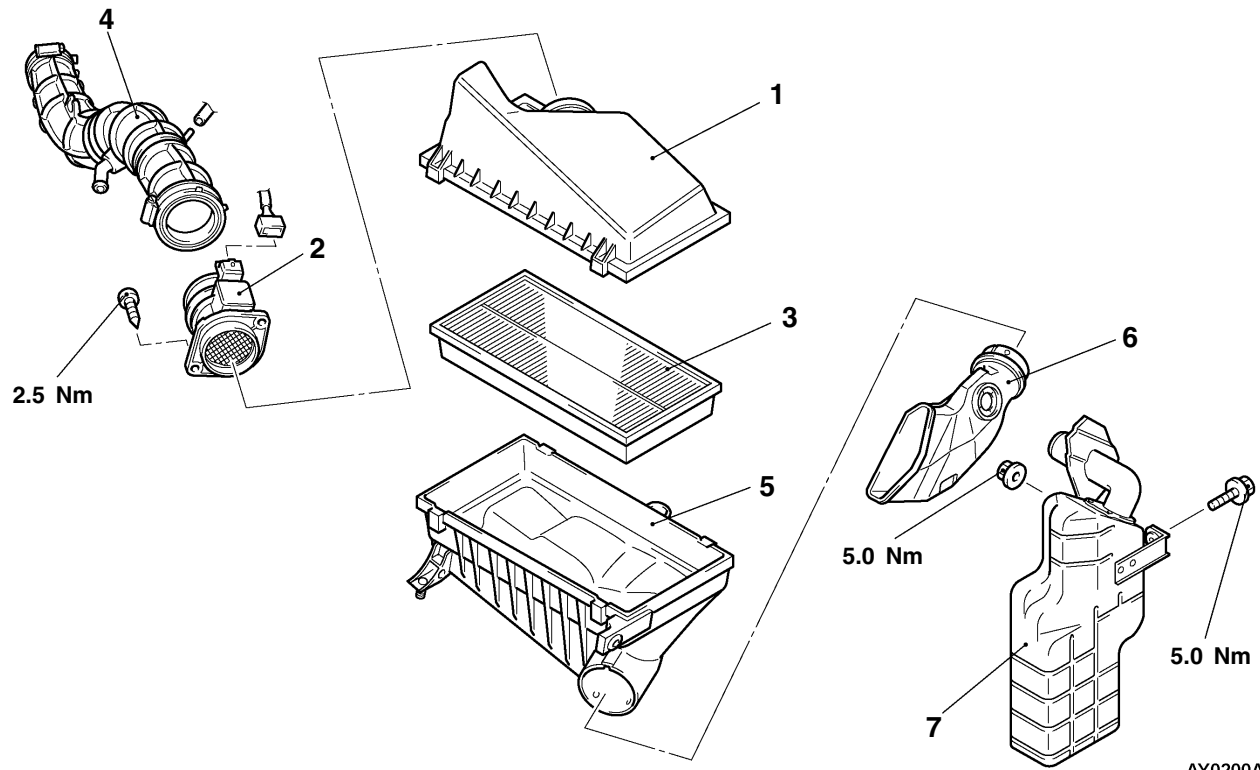
When disconnecting the vacuum hose, always make a mark so that it can be reconnected at original position.

1. Disconnect the vacuum hose from the solenoid.
2. Disconnect the solenoid connector.
3. Connect a hand vacuum pump to the nipple (B) of the solenoid (refer to the illustration at left).
4. Check the air-tightness by applying a vacuum with voltage applied directly from the battery to the solenoid and without applying voltage.

Battery voltage	Nipple A condition	Normal condition
Applied	Open	Vacuum leaks
	Closed	Vacuum maintained
Not applied	Open	Vacuum leaks

5. Measure the resistance between the terminals.

Standard value: 15.5 – 17.5 Ω (at 25°C)

AIR CLEANER <F9Q1>**REMOVAL AND INSTALLATION**

AY0200AJ

Removal steps

1. Air cleaner cover
2. Air flow sensor assembly
3. Air cleaner element
4. Air intake hose
- Battery

5. Air cleaner body
6. Air duct
- Splash shield
7. Resonator

INSTALLATION SERVICE POINT**▶A◀ AIR FLOW SENSOR ASSEMBLY INSTALLATION**

Make sure that the mesh of the air flow sensor assembly is not contaminated with dirt, then install the air flow sensor.

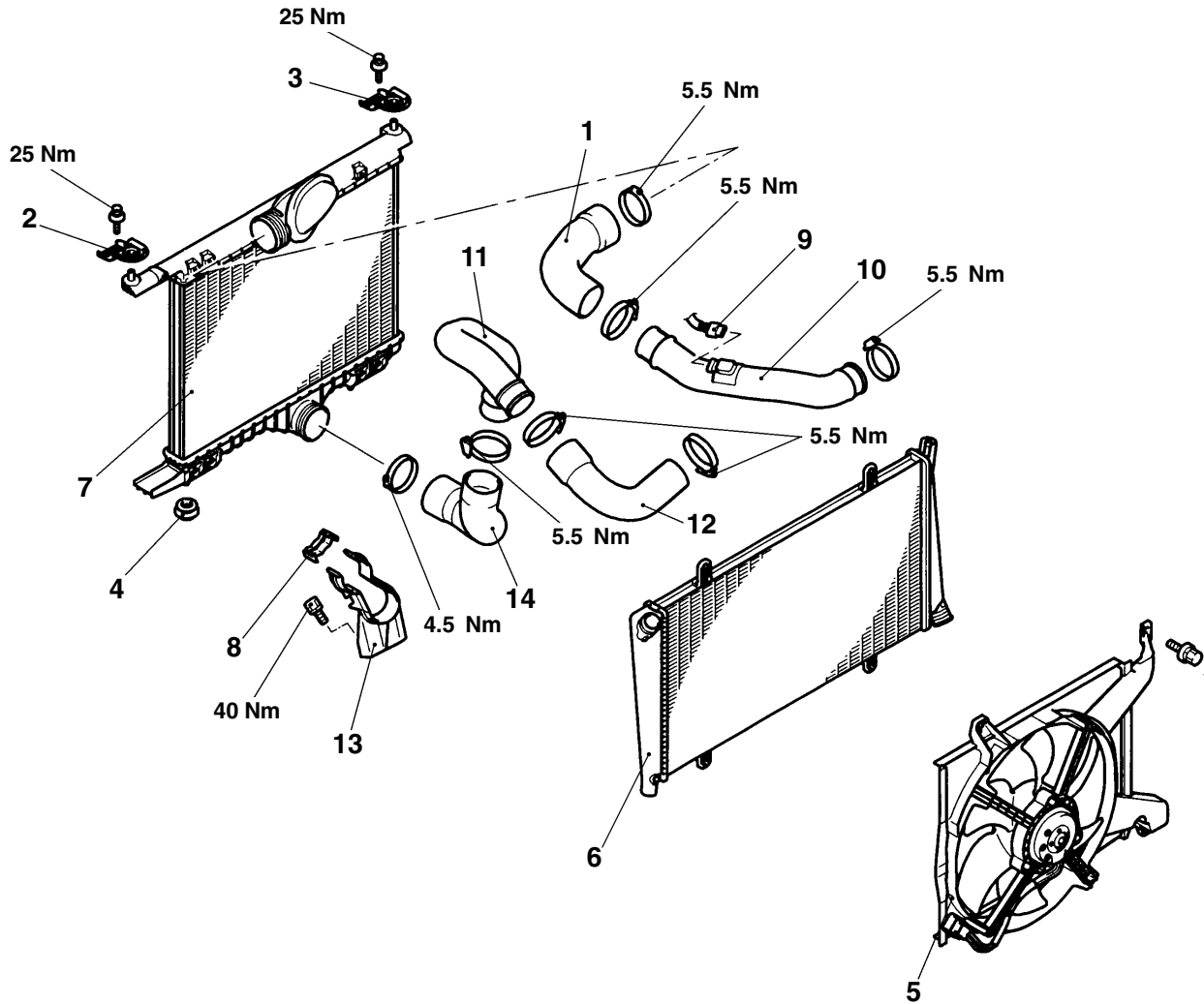
Caution

If the sensor mesh remains contaminated, the air flow sensor could not sense air flow volume exactly.

INTERCOOLER <F9Q1>

REMOVAL AND INSTALLATION

Pre-removal and Post-installation Operation
 Radiator Fan Motor, Radiator and Intercooler assembly
 Removal and Installation
 (Refer to GROUP 14 – RADIATOR <F9Q1>.)



AY0180AJ

Removal steps

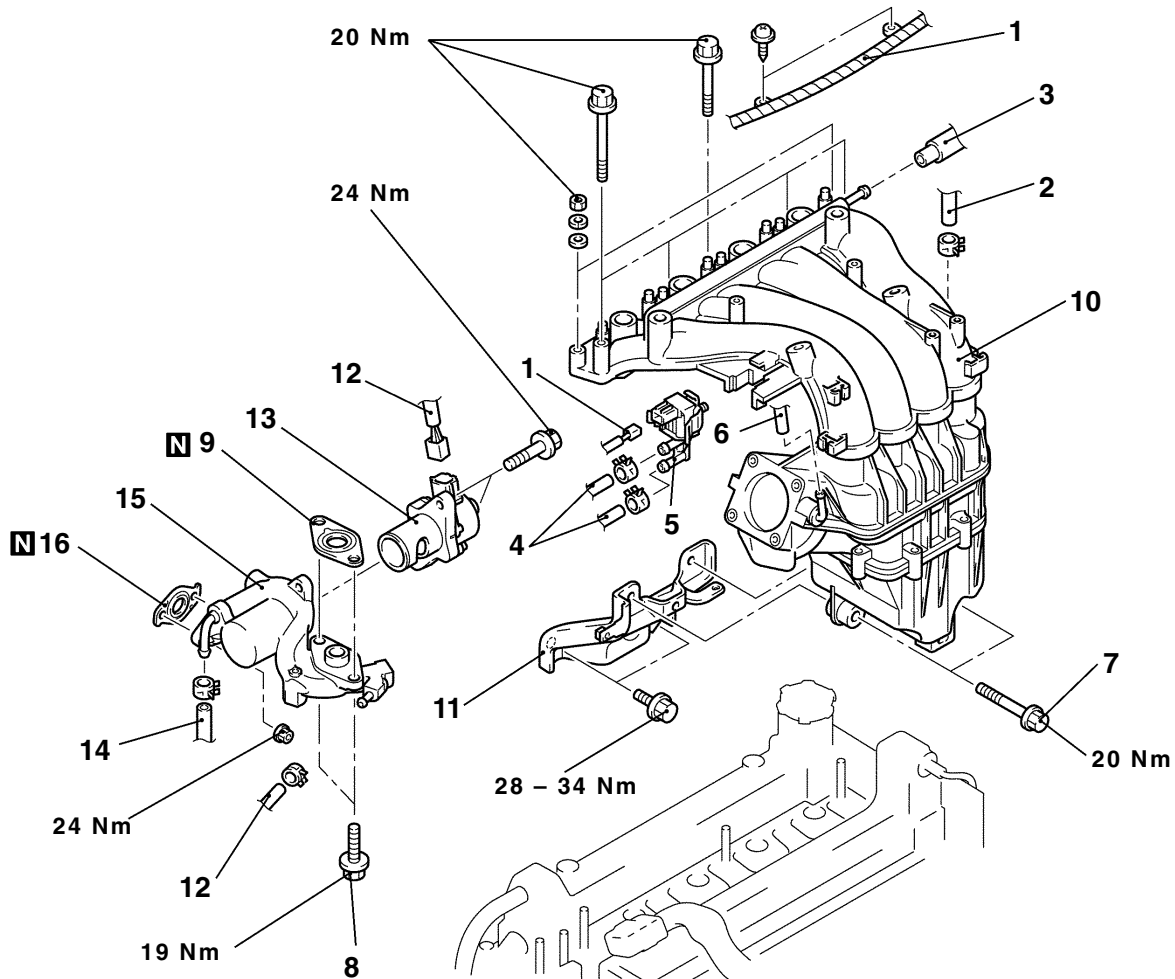
- | | |
|--|--|
| <ol style="list-style-type: none"> 1. Air hose 2. Upper insulator (L.H.) 3. Upper insulator (R.H.) 4. Insulator 5. Radiator fan motor assembly 6. Radiator assembly 7. Intercooler assembly | <ol style="list-style-type: none"> 8. Clip 9. Boost sensor connector 10. Air pipe 11. Air pipe 12. Air hose 13. Hose bracket 14. Air hose |
|--|--|

INTAKE MANIFOLD <4G93-GDI>

REMOVAL AND INSTALLATION

Pre-removal and Post-installation Operation

- Engine Coolant Draining and Supplying
- Air Cleaner Removal and Installation
- Ignition Coil Removal and Installation (Refer to GROUP 16.)
- Throttle Body Removal and Installation (Refer to GROUP 13A.)
- Fuel Injector Removal and Installation (Refer to GROUP 13A.)



AY0066AU

Removal steps

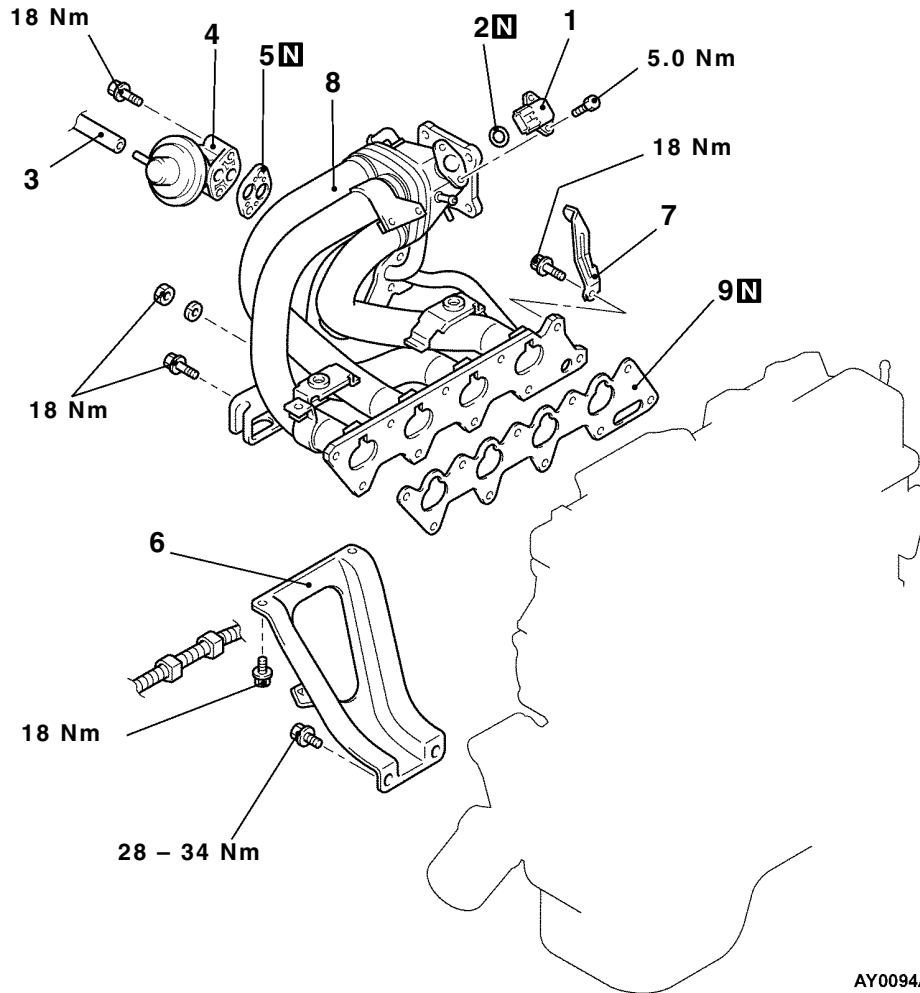
1. Control wiring harness, connector
2. Brake booster vacuum hose connection
3. PCV hose connection
4. Vacuum hoses connection
5. Purge control solenoid valve
6. Purge hose connection
7. Intake manifold to intake manifold stay connecting bolt
8. Intake manifold to EGR valve support connecting bolt
9. EGR valve support gasket
 - Injector driver
10. Intake manifold assembly
11. Intake manifold stay
12. EGR valve connector
13. EGR valve
14. Water hose connection
15. EGR valve support
16. EGR valve support gasket

INTAKE MANIFOLD <4G13-MPI>

REMOVAL AND INSTALLATION

Pre-removal and Post-installation Operation

- Engine Coolant Draining and Supplying
- Air Cleaner Removal and Installation
- Throttle Body Removal and Installation (Refer to GROUP 13B.)
- Fuel injector Removal and Installation (Refer to GROUP 13B.)



AY0094AJ

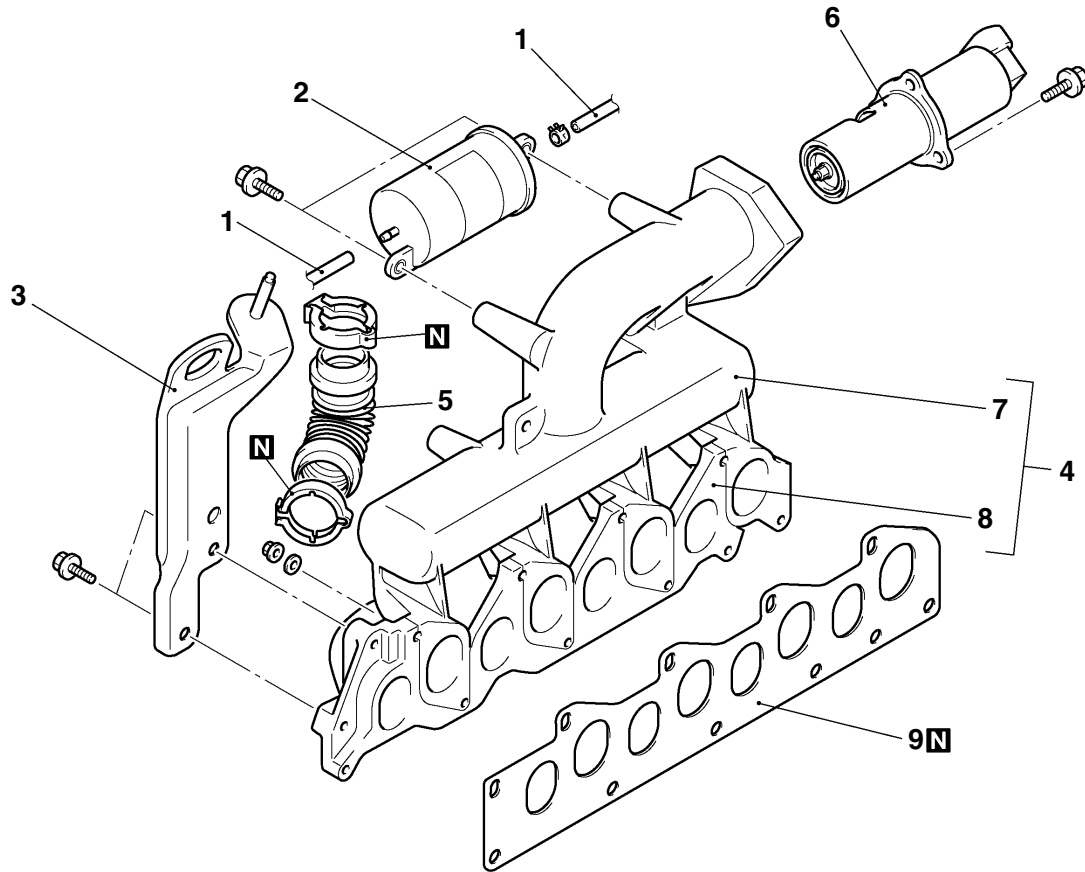
Removal steps

- | | |
|--|--|
| <ul style="list-style-type: none"> 1. Boost sensor 2. O-ring 3. Vacuum hose connection 4. EGR valve 5. EGR valve gasket | <ul style="list-style-type: none"> 6. Intake manifold stay 7. Engine hanger 8. Intake manifold 9. Intake manifold gasket |
|--|--|

INTAKE MANIFOLD AND EXHAUST MANIFOLD <F9Q1>

REMOVAL AND INSTALLATION

Pre-removal and Post-installation Operation
Turbocharger Assembly Removal and Installation
(Refer to P.15-10.)

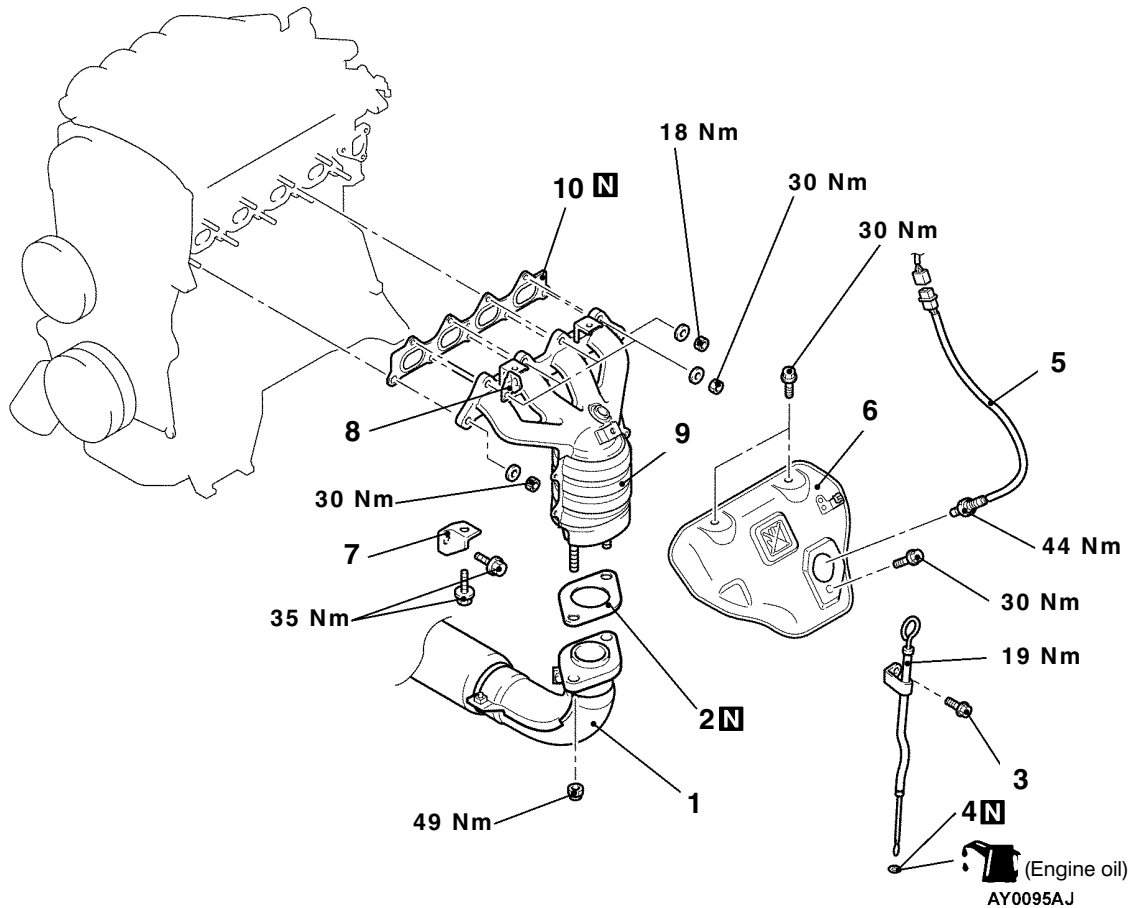


AY0199AJ

Removal steps

1. Vacuum hose connection
2. Vacuum tank assembly
3. Engine hanger
4. Intake and exhaust manifold assembly
5. EGR pipe
6. EGR valve assembly
7. Intake manifold
8. Exhaust manifold
9. Intake and exhaust manifold gasket

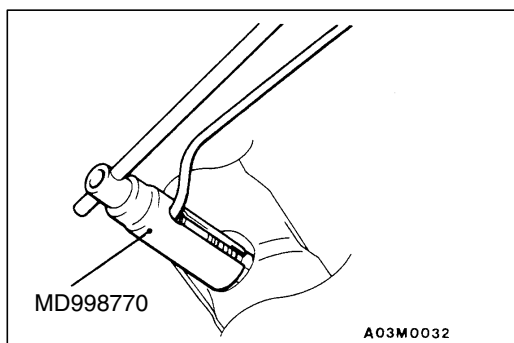
EXHAUST MANIFOLD <4G13-MPI>



Removal steps

1. Front exhaust pipe connection
2. Front exhaust pipe gasket
3. Engine oil level gauge assembly
4. O-ring
5. Oxygen sensor (front)

6. Exhaust manifold cover
7. Exhaust manifold bracket B
8. Engine hanger
9. Exhaust manifold
10. Exhaust manifold gasket



REMOVAL SERVICE POINT

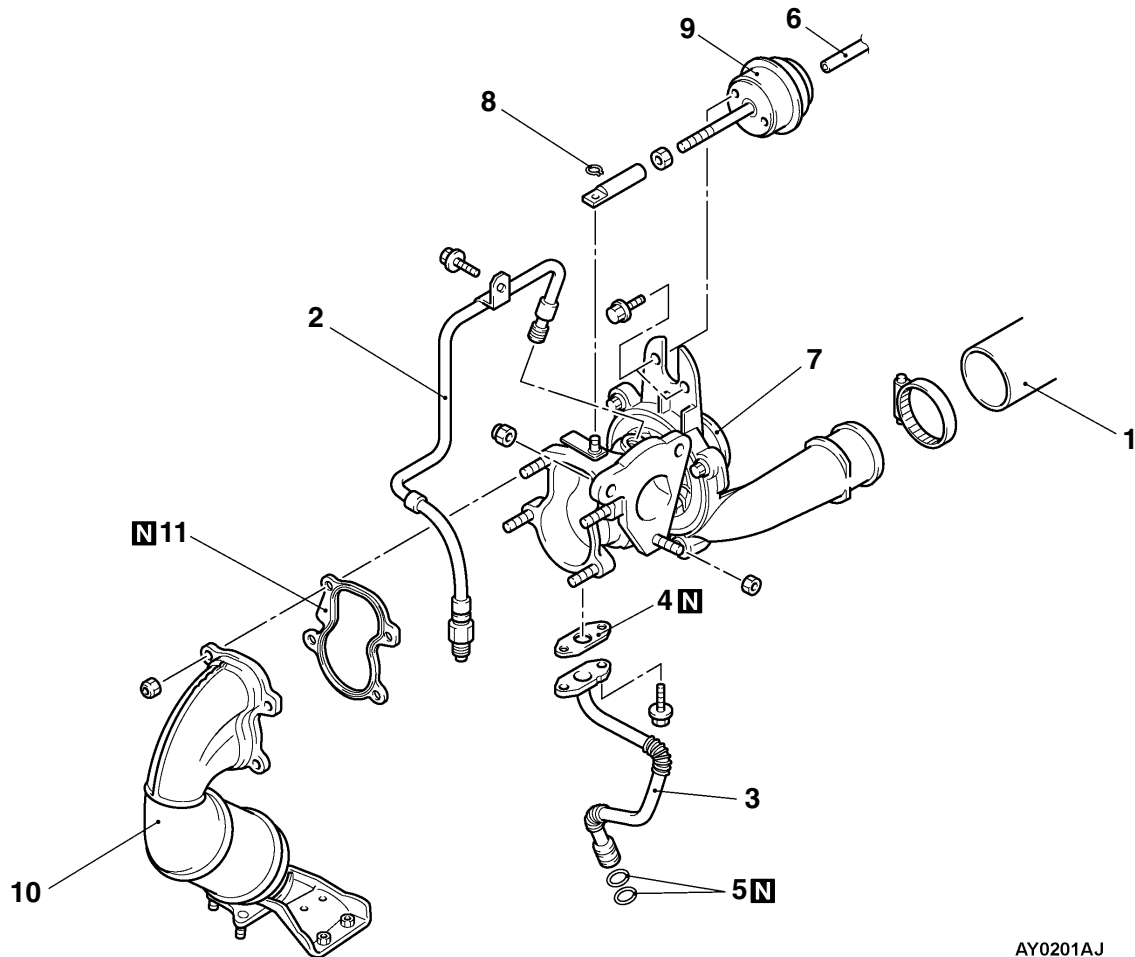
◀▶ OXYGEN SENSOR (FRONT) REMOVAL

INSTALLATION SERVICE POINT

▶◀ OXYGEN SENSOR INSTALLATION

TURBOCHARGER <F9Q1>**REMOVAL AND INSTALLATION**

Pre-removal and Post-installation Operation
 Air Intake Hose Removal and Installation
 (Refer to P.15-4.)



AY0201AJ

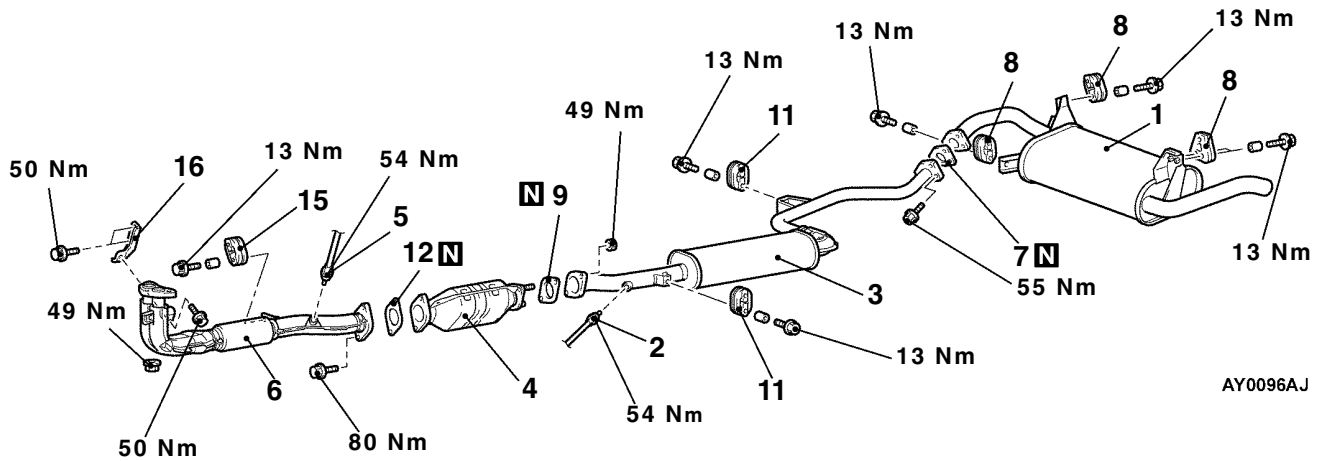
Removal steps

- | | |
|--|---|
| <ol style="list-style-type: none"> 1. Air hose connection 2. Oil pipe assembly 3. Oil return pipe assembly 4. Oil return pipe gasket 5. O-ring 6. Vacuum hose connection | <ol style="list-style-type: none"> 7. Turbocharger assembly 8. Circlip 9. Waste gate assembly 10. Exhaust fitting 11. Exhaust fitting gasket |
|--|---|

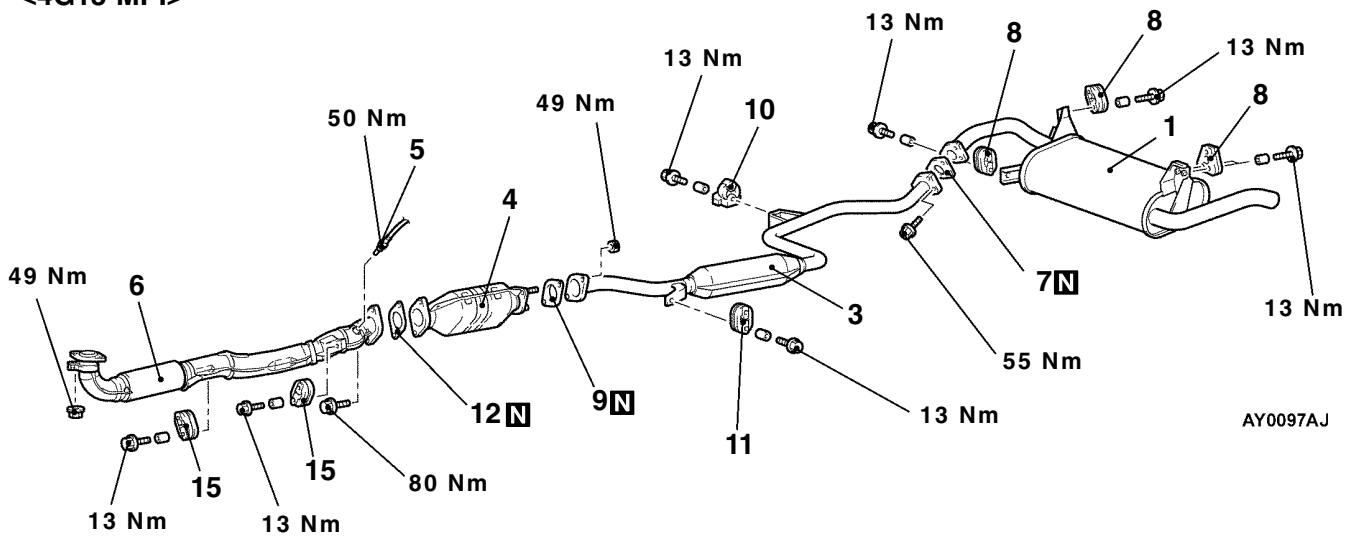
EXHAUST PIPE AND MAIN MUFFLER

REMOVAL AND INSTALLATION

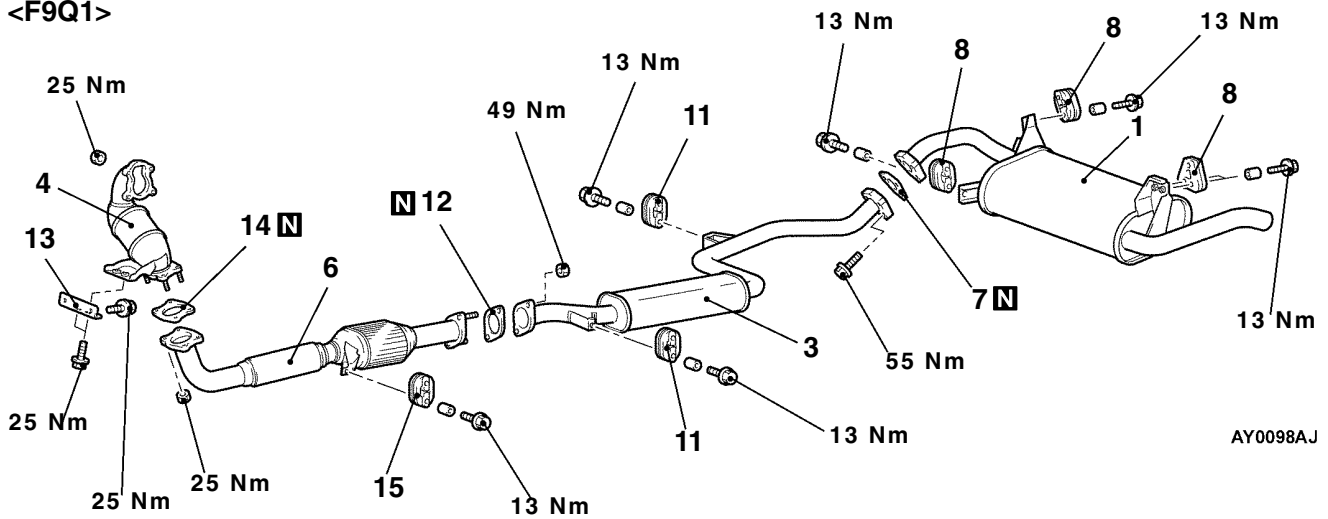
<4G93-GDI>



<4G13-MPI>



<F9Q1>



Main muffler removal steps

1. Main muffler
7. Gasket
8. Hanger

Center exhaust pipe removal steps

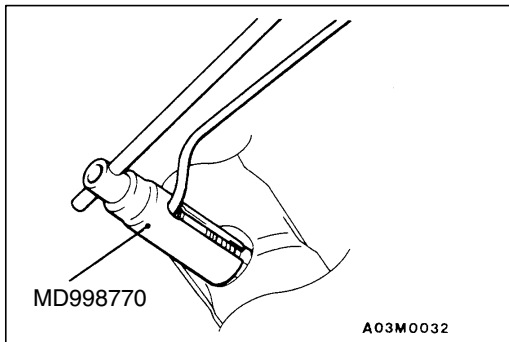
- ◀A▶ ▶A◀
2. Oxygen sensor (rear) <4G93-GDI>
 3. Center exhaust pipe
 7. Gasket
 9. Gasket <4G93-GDI, 4G13-MPI>
 10. Dynamic damper
 11. Hanger
 12. Gasket <F9Q1>

Catalytic converter removal steps

4. Catalytic converter
9. Gasket <4G93-GDI, 4G13-MPI>
12. Gasket <4G93-GDI, 4G13-MPI>
13. Bracket <F9Q1>
14. Gasket <F9Q1>

Front exhaust pipe removal steps

- ◀A▶ ▶A◀
5. Oxygen sensor (front) <4G93-GDI> or oxygen sensor (rear) <4G13-MPI>
 6. Front exhaust pipe
 12. Gasket
 15. Hanger
 16. Front exhaust pipe bracket <4G93-GDI>

**REMOVAL SERVICE POINT**

◀A▶ OXYGEN SENSOR REMOVAL

INSTALLATION SERVICE POINT

▶A◀ OXYGEN SENSOR INSTALLATION