
CLUTCH

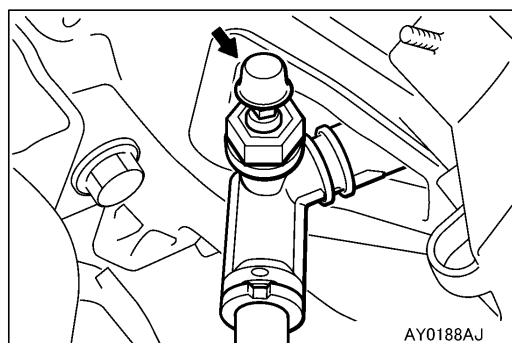
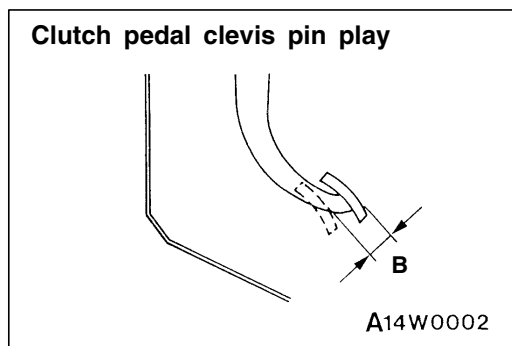
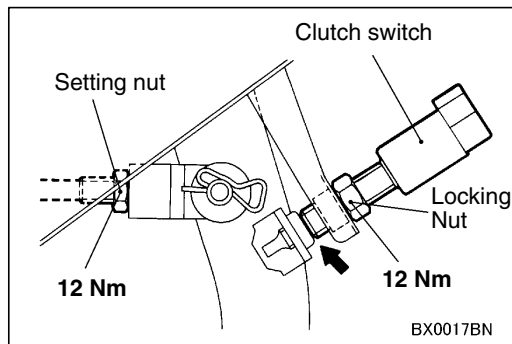
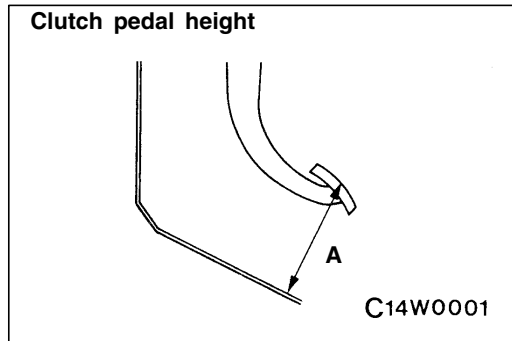
CONTENTS

GENERAL	2	Bleeding <F9Q1>	2
Outline of Changes	2	CLUTCH PEDAL <4G93, F9Q1>	3
ON-VEHICLE SERVICE	2	CLUTCH CONTROL <F9Q1>	5
Clutch Pedal Inspection and Adjustment <4G93, F9Q1>	2	Clutch Master Cylinder	6

GENERAL

OUTLINE OF CHANGES

- The service procedures for the clutch pedal have been changed due to the addition of the clutch switch to control the engine <4G93, F9Q1>.
- The clutch control have been changed due to the adoption of the F5MV1 transmission <F9Q1>.



ON-VEHICLE SERVICE

CLUTCH PEDAL INSPECTION AND ADJUSTMENT <4G93, F9Q1>

1. Turn up carpet, etc. under the clutch pedal.
2. Measure the clutch pedal height.
Standard value (A):
173.3 – 176.3 mm <L.H. drive vehicles – 4G93>
171.7 – 174.7 mm <L.H. drive vehicles – F9Q1>
172.8 – 175.8 mm <R.H. drive vehicles>
3. If the height of the clutch pedal is outside the standard value, loosen the lock nut and adjust the pedal height to the standard value using the push rod.
4. Check the marked area for secure contact after adjustment.

5. Measure the play at the clutch pedal clevis pin.
Standard value (B): 1 – 3 mm
6. If the clutch pedal pin play is not within the standard value, loosen the locking nut and move the push rod to adjust.

Caution

Do not push in the master cylinder push rod at this time.

7. Turn back the carpet, etc.

BLEEDING <F9Q1>

Specified brake fluid: DOT 3 or DOT 4

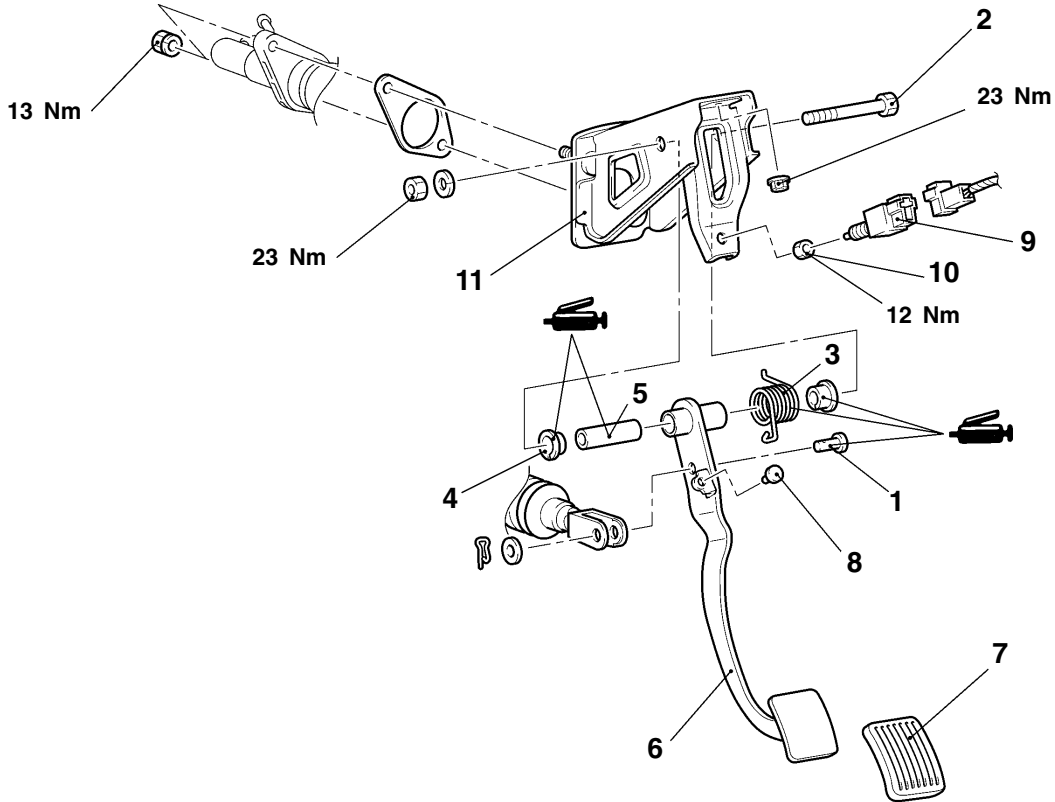
Caution

Avoid using a mixture of the specified fluid and other fluid, otherwise the clutch fluid will deteriorate resulting clutch fault.

CLUTCH PEDAL <4G93, F9Q1>

REMOVAL AND INSTALLATION

Post-installation Operation
Clutch Pedal Adjustment (Refer to P.21-2.)



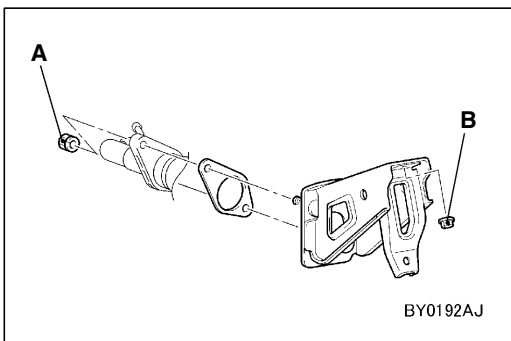
AY0192AJ

Removal steps

1. Clevis pin
2. Bolt
3. Clutch pedal return spring
4. Clutch pedal bushing
5. Pipe
6. Clutch pedal

7. Pedal pad
8. Stopper
9. Clutch switch
10. Lock nut

▶◀ 11. Master cylinder member assembly



BY0192AJ

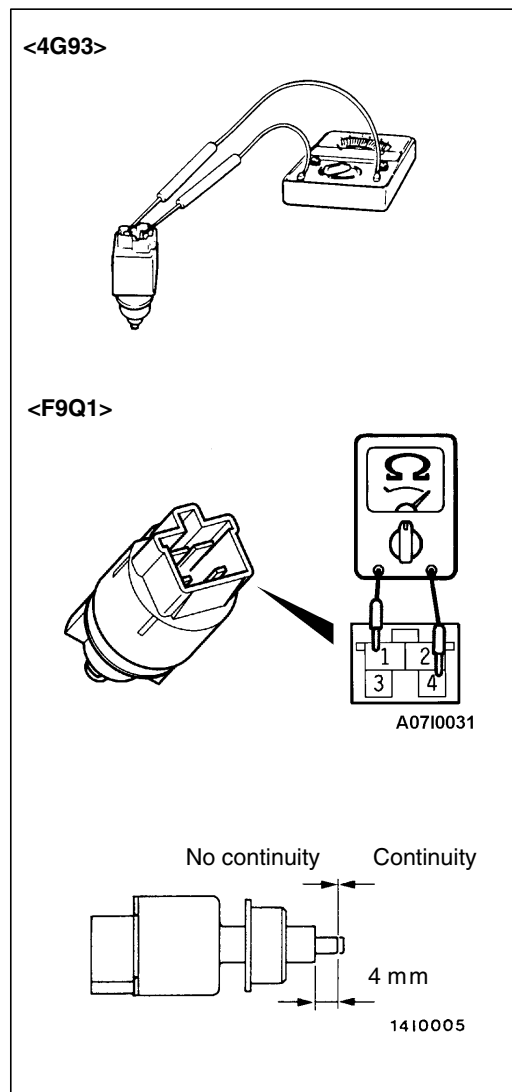
INSTALLATION SERVICE POINT

▶◀ MASTER CYLINDER MEMBER ASSEMBLY

Tighten the clutch master cylinder mounting nuts (A), and then the master cylinder member assembly mounting bolts (B).

NOTE

The master cylinder member assembly can not be positioned correctly if the pedal mounting bolts (B) are tightened first as the their holes are oblong holes.



INSPECTION

CLUTCH SWITCH CHECK

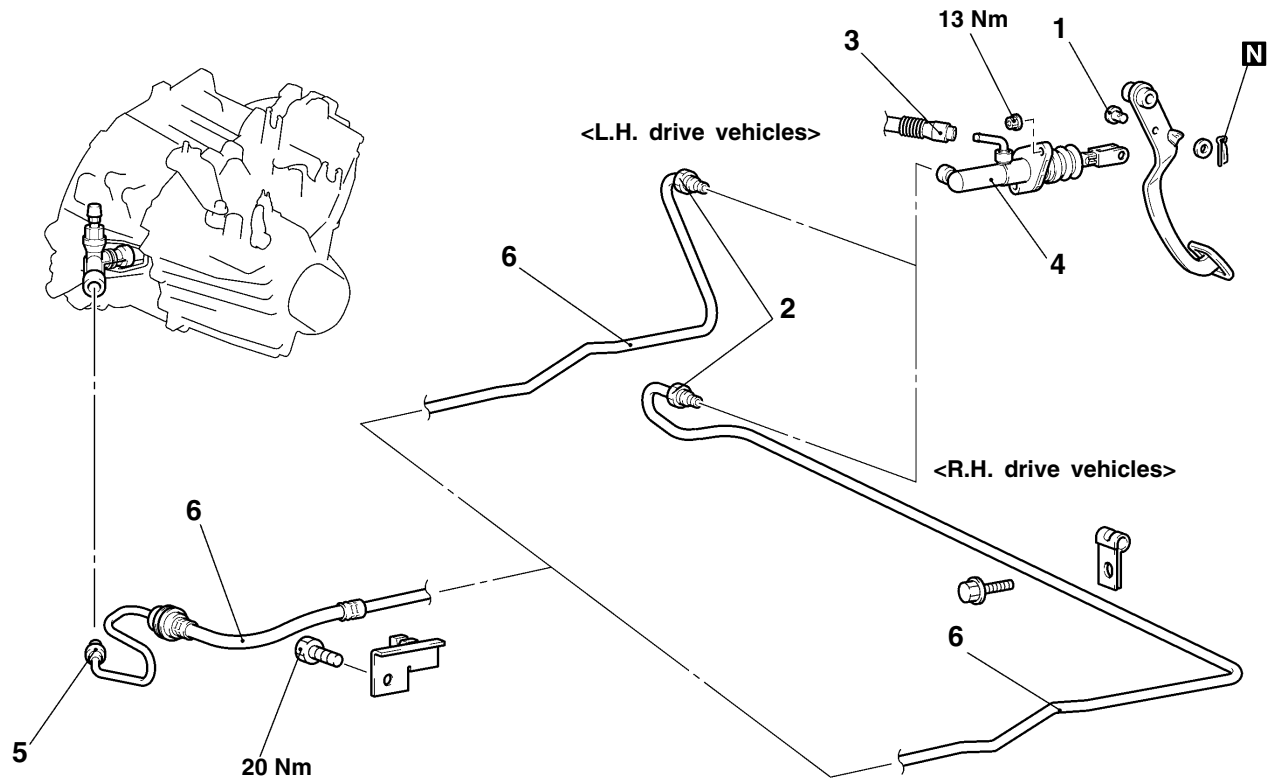
1. Connect the circuit tester (Ω range) to the connector of the clutch switch.
2. If there is no continuity when the plunger is pushed into the outer case so as to be stuck from the surface of the outer case for less than 4mm and if there is continuity when the plunger is released, the switch is in good condition.

CLUTCH CONTROL <F9Q1>**REMOVAL AND INSTALLATION****Pre-removal Operation**

Clutch Fluid Draining (Refer to P.21-2)

Post-installation Operation

- Clutch Fluid Supplying
- Clutch Line Bleeding (Refer to P.21-3)
- Clutch Pedal Adjustment (Refer to P. 21-2)



AY0194AJ

Clutch master cylinder removal steps

- Battery, battery tray
 - Intercooler pipe (Refer to GROUP 15 – Intercooler)
 - Air cleaner
 - Transmission mount, transmission mount bracket (Refer to GROUP 22 – Manual Transmission)
 - Fuel filter
1. Clevis pin

2. Clutch tube connection (Master cylinder side)
3. Reservoir hose connection
4. Clutch master cylinder

Clutch line removal steps

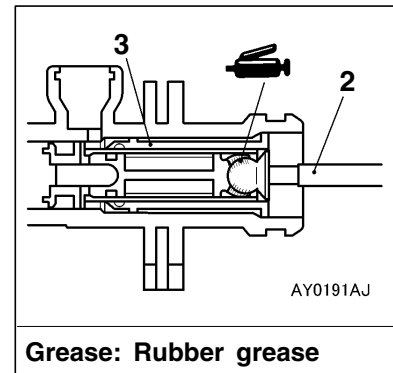
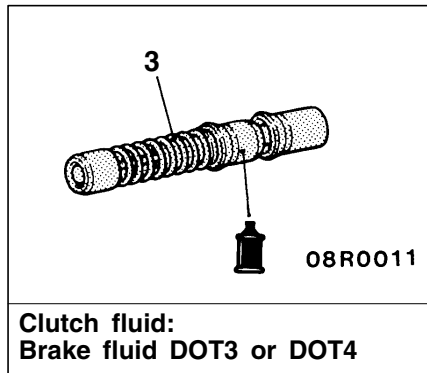
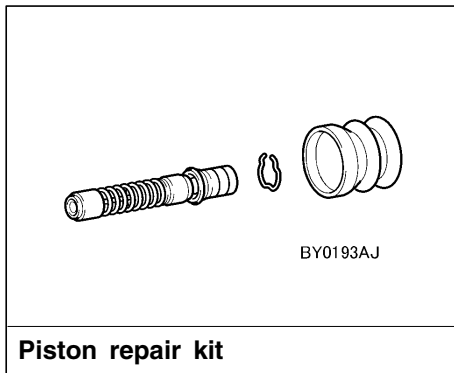
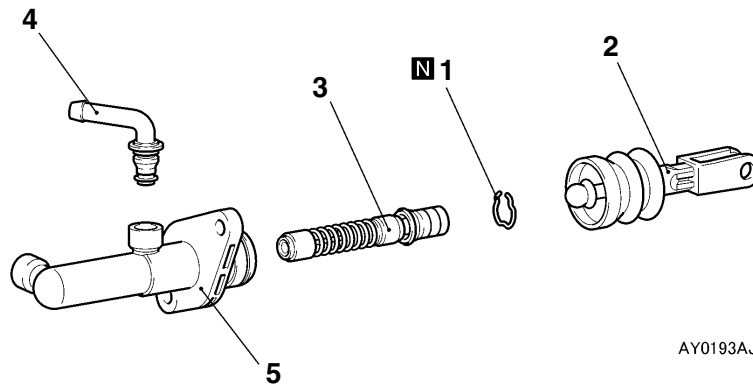
5. Clutch tube connection (Transmission side)
6. Clutch tube assembly

DISASSEMBLY AND REASSEMBLY

CLUTCH MASTER CYLINDER

Caution:

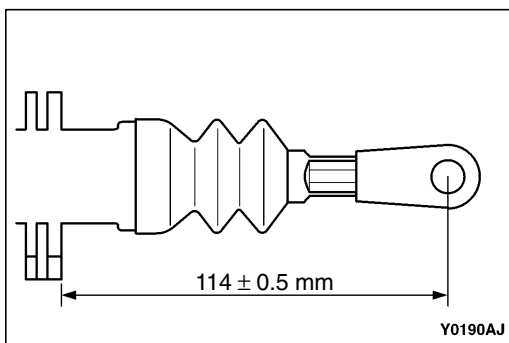
Do not disassemble piston assembly. The piston assembly can not be reassembled.



Disassembly steps

- ▶◀
1. Piston stopper ring
 2. Push rod assembly
 3. Piston assembly

4. Connector
5. Clutch master cylinder body



INSTALLATION SERVICE POINT

◀▶ **PUSH ROD ASSEMBLY INSTALLATION**

Set the length of the push rod assembly to the shown dimension to make the adjustment of the clutch pedal easier.