

GROUP 37A

STEERING

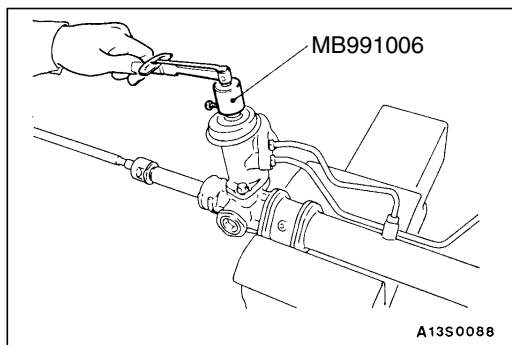
GENERAL

OUTLINE OF CHANGE

- The standard value of the gear box total pinion torque has been changed due to the changes on the steering gear box <1800-SPORT, 1900-SPORT>.
- The service procedure of the power steering oil pump has been added due to the introduction of the 1,900 mL diesel engine.
- The service procedure of the power steering hoses has been added due to the introduction of the 1,900 mL diesel engine.

POWER STEERING GEAR BOX <1800-SPORT, 1900-SPORT>

The same procedures as before are applied except for the inspections below.



INSPECTION

GEAR BOX TOTAL PINION TORQUE

Using the special tools, rotate the pinion gear at the rate of one rotation in approximately 4 to 6 seconds to check the total pinion torque.

Standard value: 0.5 – 1.2 Nm
[Change in torque: 0.4 Nm]

NOTE

When measuring, remove the bellows from the rack housing. Measure the pinion torque through the whole stroke of the rack.

If the measured value is not within the standard range, first adjust the rack support cover, and then check the total pinion starting torque again.

If the torque cannot be adjusted to the standard value, replace the power steering gear box assembly.

Caution

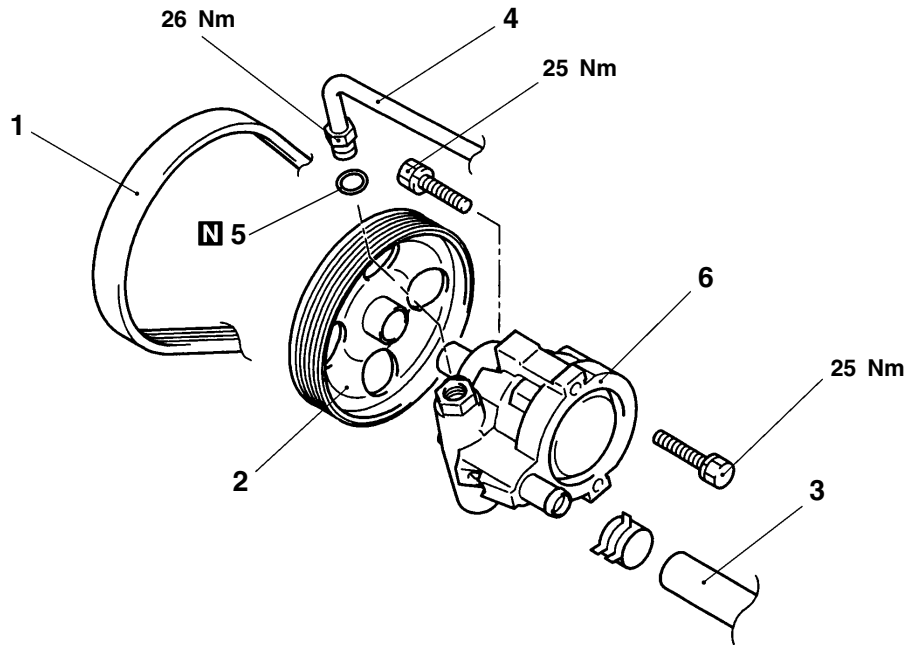
The power steering gear box assembly should be secured at the mounting sections. If it is secured in any other places, the gear housing may become deformed or damaged.

POWER STEERING OIL PUMP <1900>**REMOVAL AND INSTALLATION****Pre-removal Operation**

Power Steering Fluid Draining

Post-installation Operation

- Power Steering Fluid Supplying
- Drive-belt Tension Adjusting
(Refer to GROUP 11C – On-vehicle Service.)
- Power Steering Fluid Line Bleeding



AY0205AJ

Removal steps

1. Drive-belt
2. Power steering pump pulley
3. Suction hose

4. Pressure hose
5. O-ring
6. Oil pump

INSPECTION

- Check the drive-belt for cracks.
- Check the pulley assembly for uneven rotation.

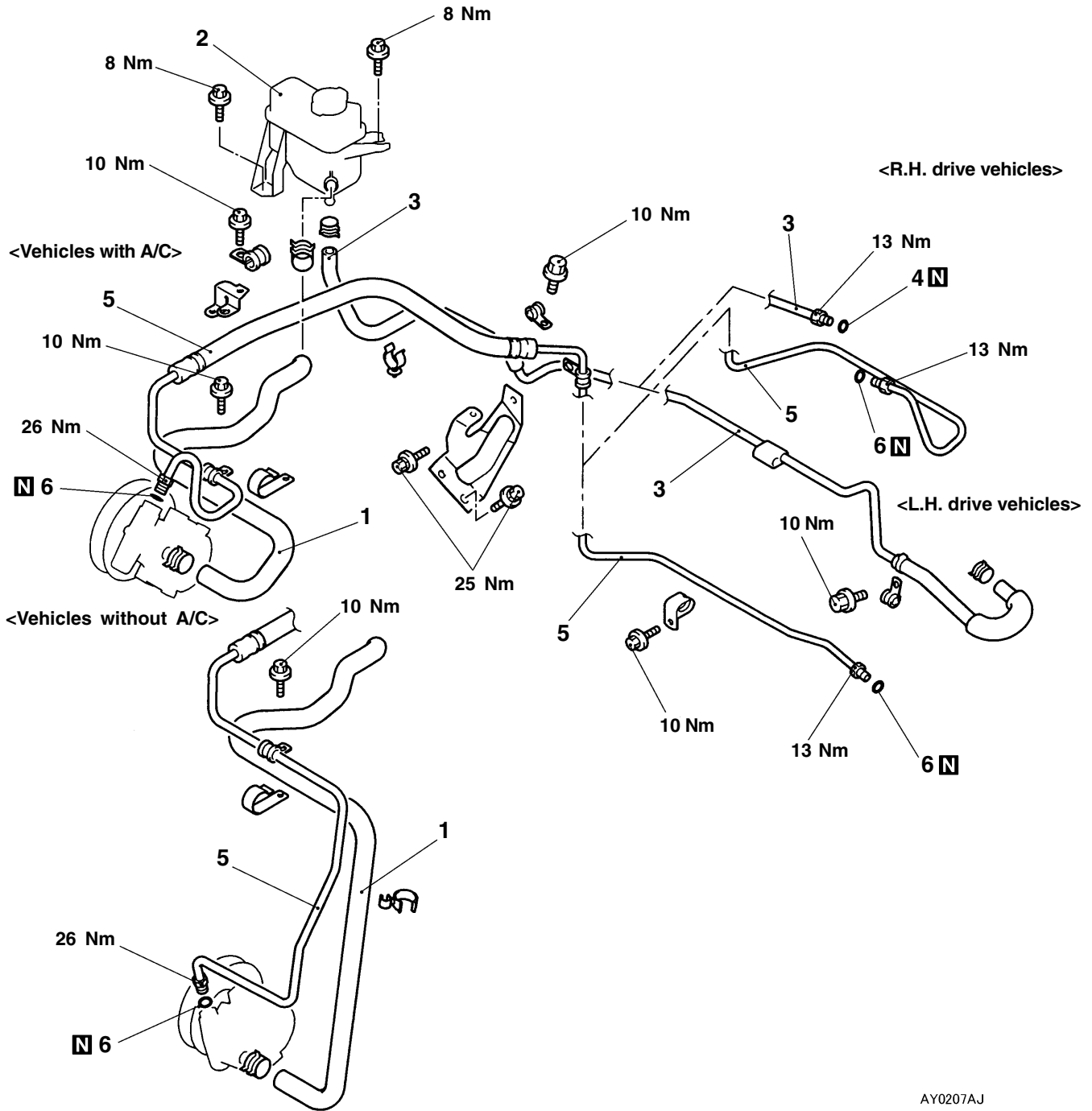
POWER STEERING HOSES <1900>

REMOVAL AND INSTALLATION

Pre-removal Operation
Power Steering Fluid Draining

Post-installation Operation

- Power Steering Fluid Supplying
- Power Steering Fluid Line Bleeding



Removal steps

1. Suction hose
2. Oil reservoir
3. Return hose

4. O-ring
5. Pressure hose
6. O-ring

AY0207AJ

NOTES