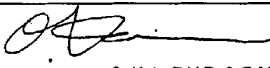
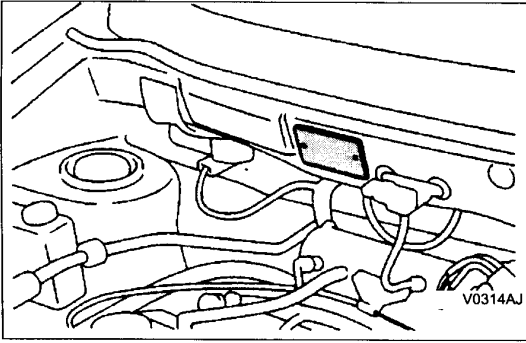




SERVICE BULLETIN

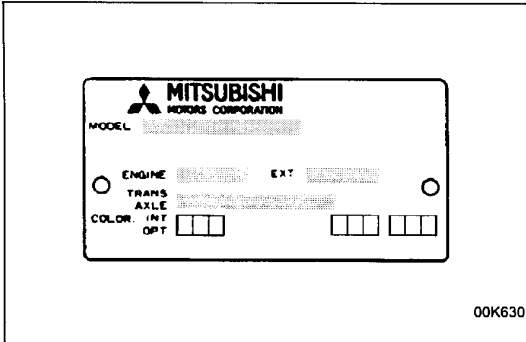
PUBLICATION GROUP, AFTER SALES SERVICE DEP.
MITSUBISHI MOTOR SALES EUROPE BV

SERVICE BULLETIN		No.: ESB-99E42-506	
		Date: 1999-12-31	<Model> <M/Y> (EC) SPACE STAR 99-10 (DG1A, DG5A)
Subject: ADDITION OF BODY COLOURS			
Group: BODY			
CORRECTION		 O. Kai - E.V.P. & G.M. After Sales Service Dept.	
1. Description: This Service Bulletin informs you that body colours have been added for the '99 model Space Star			
2. Applicable Manuals:			
Manual	Pub. No.	Language	Page(s)
'99 SPACE STAR Body Repair Manual	BMXE99E1	(English)	6-2
	BMXS99E1	(Spanish)	
	BMXF99E1	(French)	
	BMXG99E1	(German)	
	BMXD99E1	(Dutch)	
	BMXW99E1	(Swedish)	
	BMXI99E1	(Italian)	
3. Details:			



BODY COLOUR CODE

The body colour code is imprinted on the vehicle-information code plate, which is mounted on the underside of the hood.



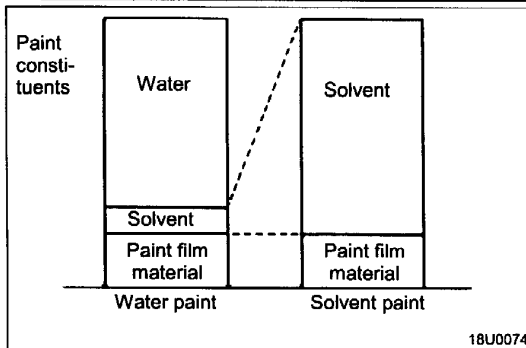
BODY COLOUR CODE INTERPRETATION

The information contained in the body colour code is explained in the body colour charts.

BODY COLOUR CHARTS

Check the vehicle's body colour code and then use this body colour chart to determine the refinishing paint supplier from which the colour can be purchased.

	Colour	Body colour code	Colour number	Body colour name	Composition of film	Engine compartment and luggage compartment colour	
						Colour number	Colour
Paint used by manufacturer	PURE SILVER	A 50	AC11150	Haag Silver	Metallic		
	LIGHT BLUE	T 26	AC11226	Ionia Blue	Solid		
	BLUE	T 46	AC11146	Scandinavia Blue	Pearl + Graphite		
	DARK GREEN	G 19	AC11219	Liege Green	Pearl		
	LIGHT TURQUISE	G 66	AC11266	Fiji Turquoise	Solid		
	WHITE	W 41	AC11141	St. Moritz White	Solid		
	RED	R 43	AC11143	Shining Red	Solid		
	TROPICAL LIME	Y 24	AC11224	Lime Gold	Metallic		<Added>
	BLUE	T 44	AC11144	Oslo Blue	Solid		
	DARK GREEN	F 18	AC11218	Aries Green	Solid		



WATER PAINT

Water paint is used as top coat for metallic (pearl) colour. Adding water instead of solvent reduces the solvent that a paint emits when baking. This contributes to protecting global environment. In addition, it is recommended that water paint is also used as a touch-up paint. That is because repaired surface matches other surfaces easily.