

## GROUP 37A STEERING

### GENERAL

#### OUTLINE OF CHANGE

- On the 2,400-mL engine model, the pressure hose routing is different from other models. Due to this, the power steering hose service procedure has been added.
- The service procedures for the power steering pump and the power steering hose have been changed due to the introduction of 2,000-mL engine model to the SPACE WAGON.

However, these procedures are the same as 2,000-mL engine model of the SPACE RUNNER.  
(Refer to '99 SPACE RUNNER/SPACE WAGON Workshop Manual<Pub. No. PWDE9803> )

### POWER STEERING HOSE <2400>

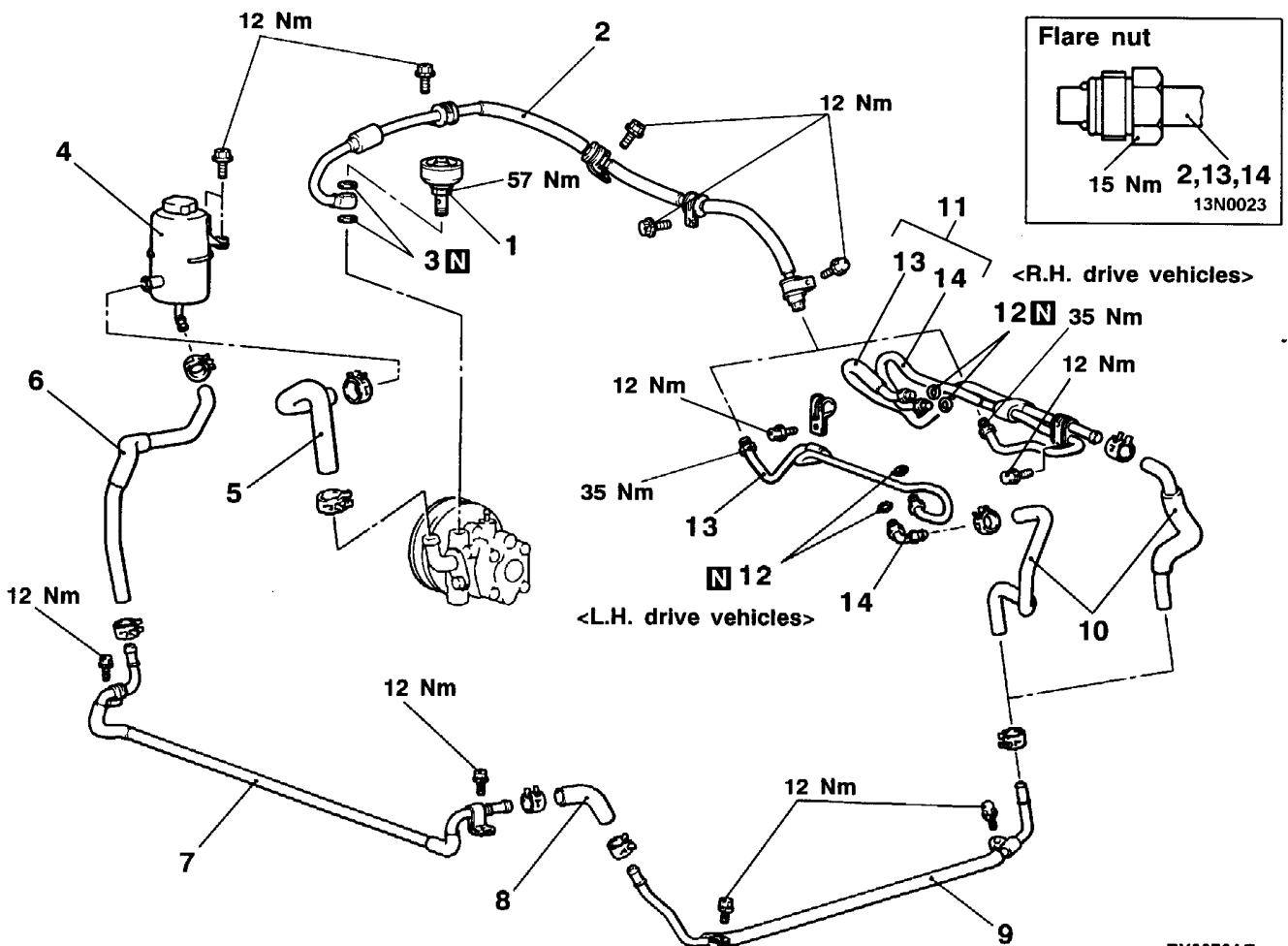
#### REMOVAL AND INSTALLATION

##### Pre-removal Operation

- Power Steering Fluid Draining (Refer to P.37A-9)\*
- Under Cover Removal

##### Post-installation Operation

- Under Cover Installation
- Power Steering Fluid Supplying (Refer to P.37A-9)\*
- Power Steering Fluid Line Bleeding (Refer to P.37A-10)\*



**Removal steps**

1. Accumulator <2400>
2. Pressure hose
3. Gasket
4. Oil reservoir
5. Suction hose
6. Return hose
7. Cooler pipe

8. Return hose
9. Return pipe
10. Return hose
11. Pipe assembly
12. O ring
13. Pressure pipe assembly
14. Return pipe assembly

**NOTE**

\*: Refer to '99 SPACE RUNNER/SPACE WAGON Workshop Manual (Pub. No. PWDE9803).

**REMOVAL SERVICE POINT**

The procedure is the same as before.

**INSTALLATION SERVICE POINT**

The procedure is the same as before.