

ACCELERATOR CONTROL, FUEL AND EXHAUST SYSTEMS

SECTION FE

CONTENTS

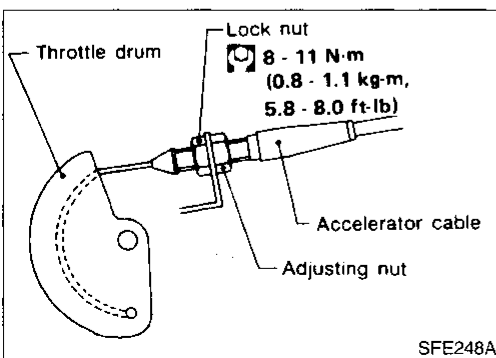
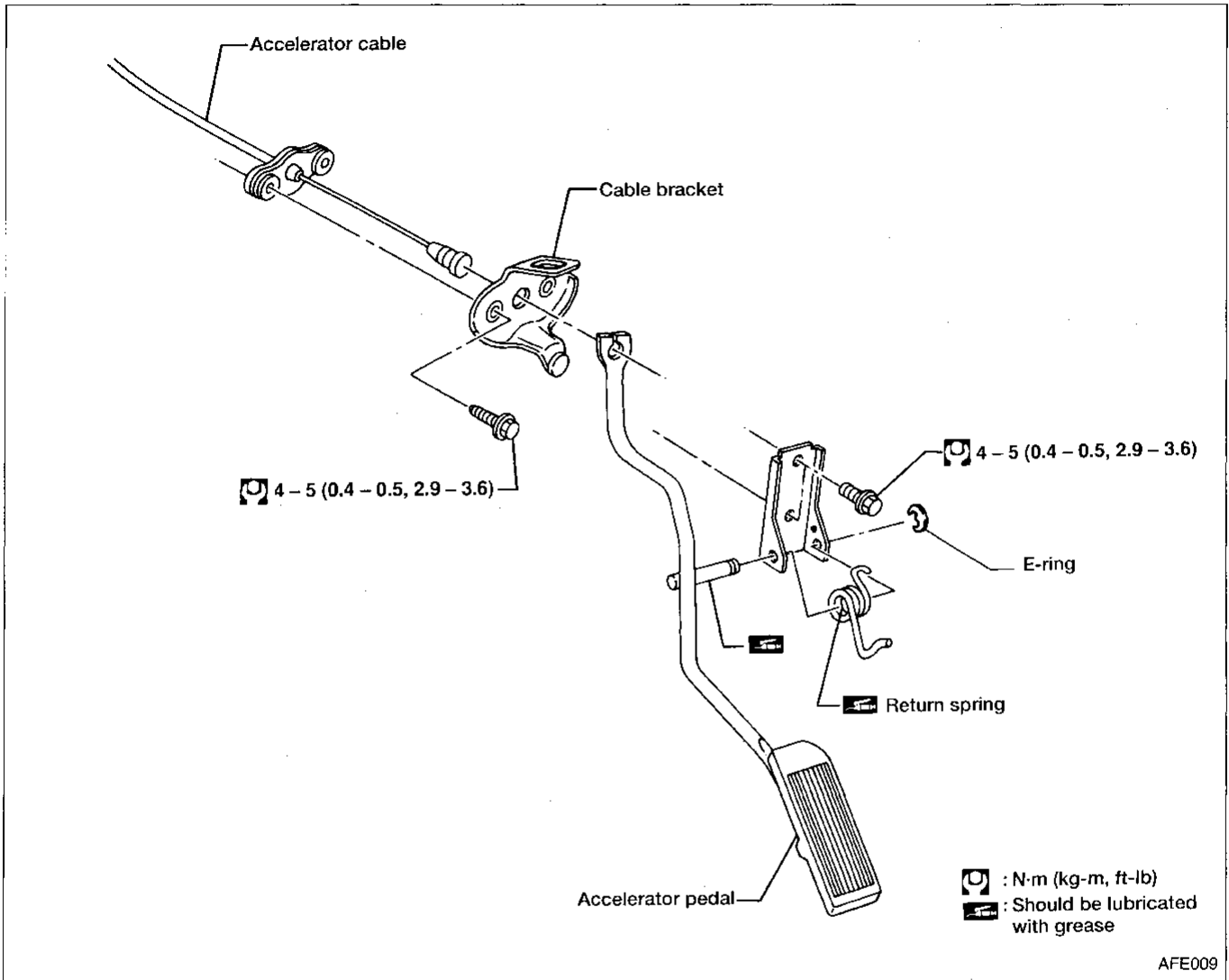
ACCELERATOR CONTROL SYSTEM	2	Special Service Tool.....	4
Adjusting Accelerator Cable	2	Fuel Pump And Gauge	4
FUEL SYSTEM	3	EXHAUST SYSTEM	5
Fuel Tank	3		

GI
MA
EM
LC
EF &
EC
FE
CL
MT
AT
FA
RA
BR
ST
BF
HA
EL
IDX

ACCELERATOR CONTROL SYSTEM

CAUTION:

- When removing accelerator cable, make a mark to indicate lock nut's initial position.
- Check that throttle valve opens fully when accelerator pedal is fully depressed and that it returns to idle position when pedal is released.
- Check accelerator control parts for improper contact with any adjacent parts.
- When connecting accelerator cable, be careful not to twist or scratch its inner wire.
- For ASCD cable adjustment, refer to EL section ("ASCW WIRE ADJUSTMENT", "Trouble Diagnoses", "AUTOMATIC SPEED CONTROL DEVICE").



Adjusting Accelerator Cable

1. Loosen lock nut and tighten adjusting nut until throttle drum starts to move.
2. From that position turn back adjusting nut 1.5 to 2 turns, and secure lock nut.

FUEL SYSTEM

Fuel Tank

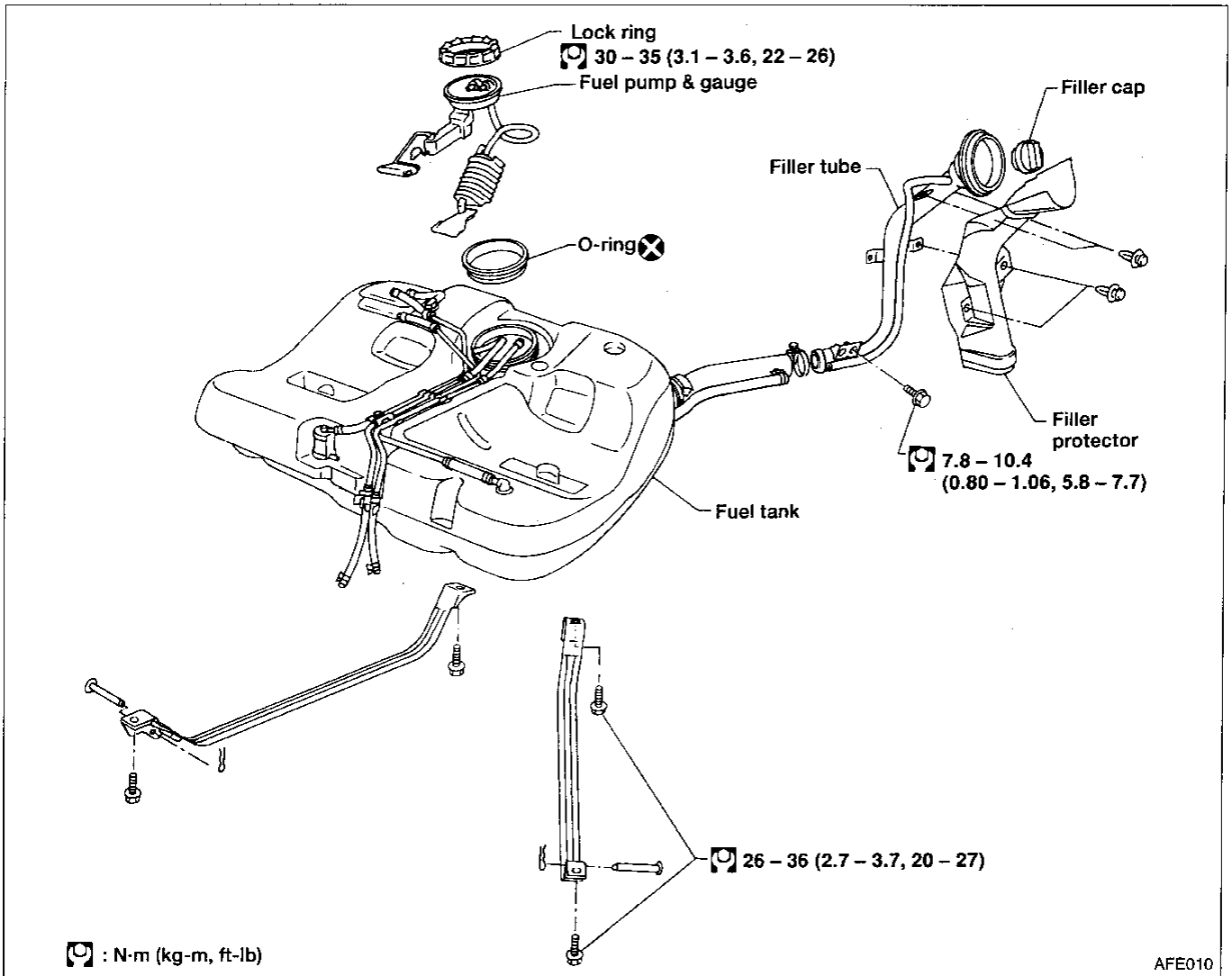
WARNING:

When replacing fuel line parts, be sure to observe the following:

- Put a "CAUTION: INFLAMMABLE" sign in workshop.
- Be sure to furnish workshop with a CO₂ fire extinguisher.
- Do not smoke while servicing fuel system. Keep open flames and sparks away from work area.
- Be sure to disconnect battery ground cable before conducting operations.
- Drain fuel from fuel tank into an explosion-proof container and put lid on securely.
- Use rubber gloves to prevent fuel from contacting skin.

CAUTION:

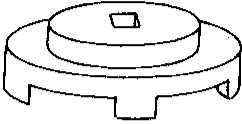
- Before disconnecting fuel hose, release fuel pressure from fuel line. Refer to MA section ("Changing Fuel Filter", "ENGINE MAINTENANCE").
- Do not disconnect any fuel line unless absolutely necessary.
- Plug hose and pipe openings to prevent entry of dust or dirt.
- Do not kink or twist hose and tube when installing.
- Do not tighten hose clamps excessively to avoid damaging hoses.
- When installing fuel check valve, pay attention to its direction. Refer to EF & EC section ("Inspection", "EVAPORATIVE EMISSION (EVAP) SYSTEM").
- Tighten bolts to specified torque.
- After installation, run engine and check for leaks at connections.

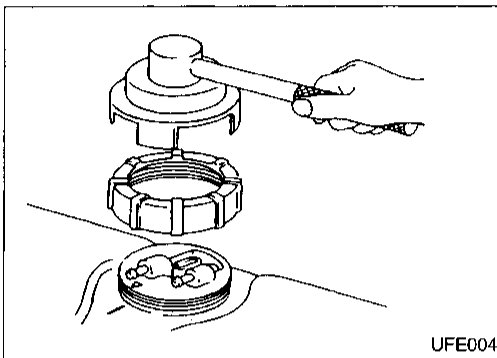


FUEL SYSTEM

Fuel Tank (Cont'd)

SPECIAL SERVICE TOOL

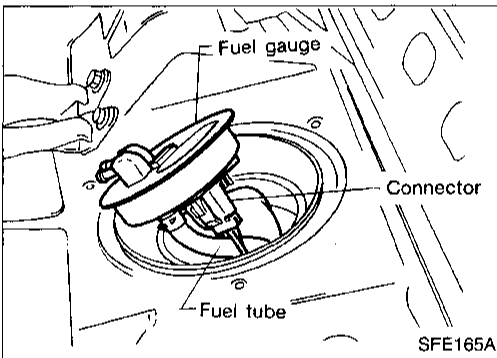
Tool number (Kent-Moore No.) Tool name	Description
KV999G0010 (J38879) Fuel tank lock ring socket	



FUEL PUMP AND GAUGE

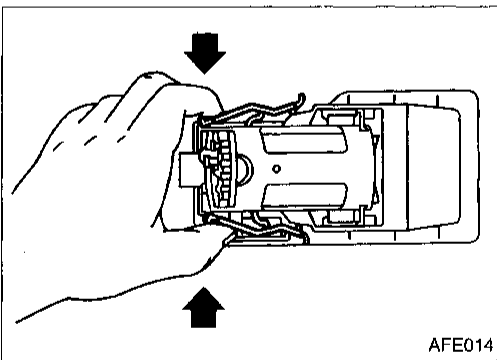
Removal

1. Release fuel pressure from fuel line.
Refer to MA section ("Changing Fuel Filter", "ENGINE MAINTENANCE").
2. Remove inspection hole cover located under rear seat.
3. Disconnect connectors and fuel tubes.
4. Remove lock ring (Use S.S.T. J38879).
5. Remove fuel gauge assembly and disconnect tubes and electrical connector.



6. Remove fuel pump by pinching the two (2) tabs together as shown in the figure while lifting out of fuel tank bracket.

If fuel sending unit needs to be removed, pull up large tab on sending unit, opposite the end of the float. The sending unit lifts straight out of fuel tank bracket.

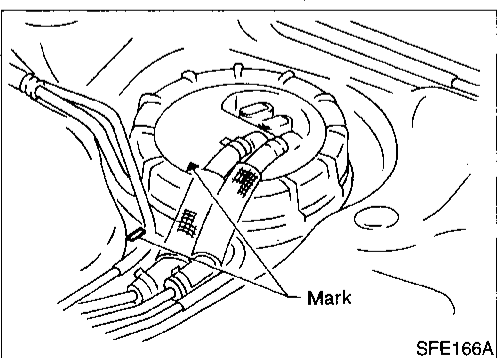


Installation

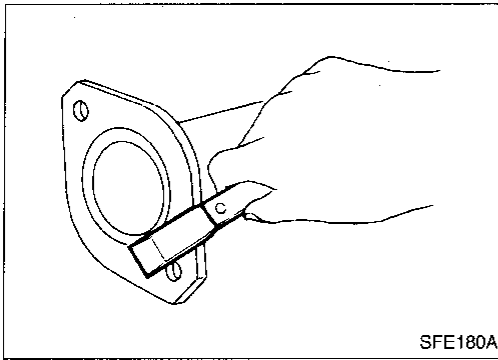
- Installation procedure is basically the reverse order of removal.

CAUTION:

- Always replace O-ring with a new one.
- Align parts with alignment marks.
- Tighten lock ring to specified torque.
- After installation, run engine and check for leaks at connections.

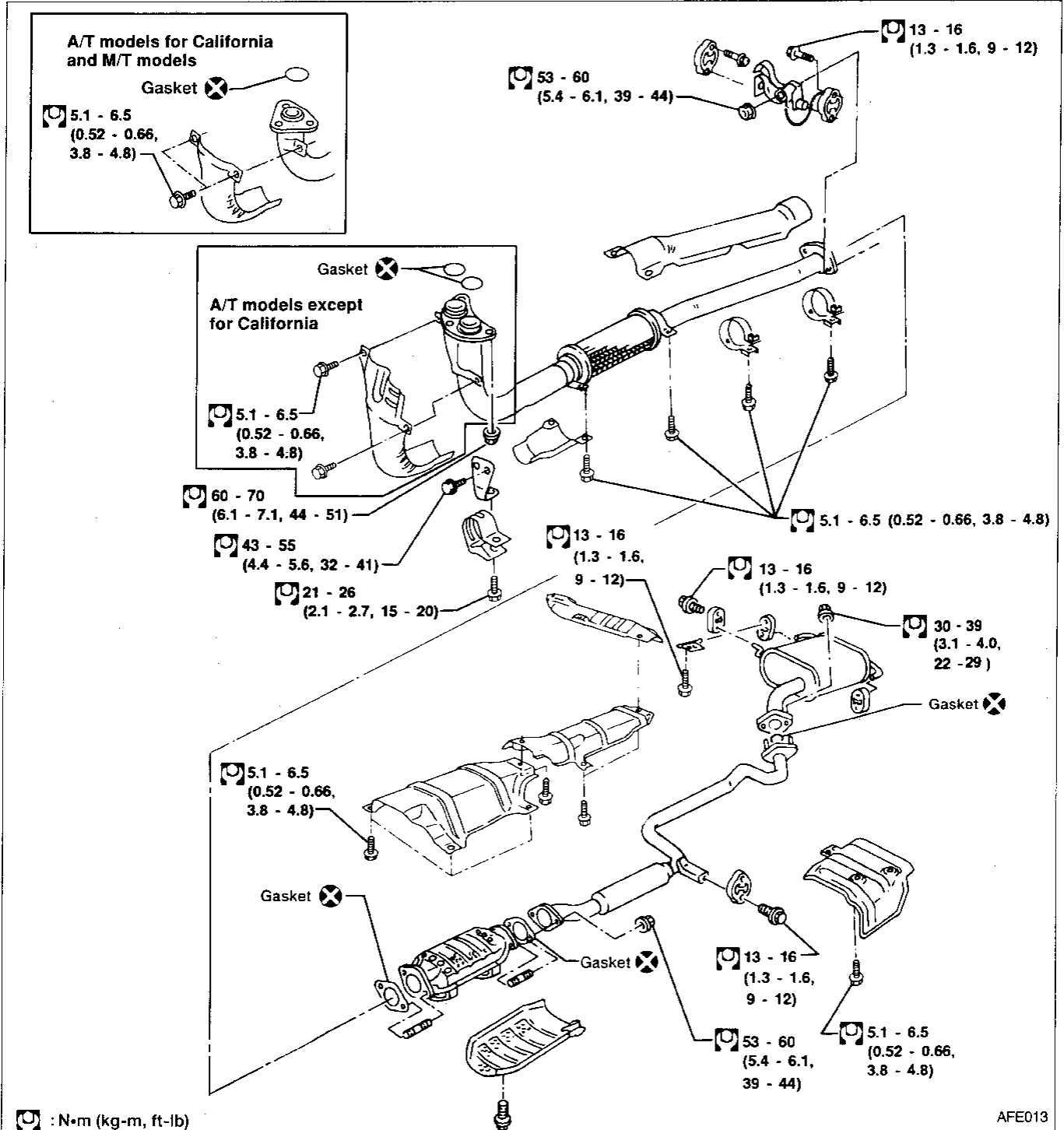


EXHAUST SYSTEM



CAUTION:

- Always replace exhaust gaskets with new ones when reassembling. If gasket remains on flange surface, scrape off completely as shown at left.
- With engine running, check all tube connections for exhaust gas leaks, and entire system for unusual noises.
- After installation, check to ensure that mounting brackets and mounting insulators are free from undue stress. If any of the above parts are not installed properly, excessive noise or vibration may be transmitted to the vehicle body.



GI
MA
EM
LC
EF & EC
FE
CL
MT
AT
FA
RA
BR
ST
BF
HA
EL
IDX