

ACCELERATOR CONTROL, FUEL & EXHAUST SYSTEMS

SECTION FE

FE

CONTENTS

PREPARATION	2
Special Service Tool	2

QG16DE, QG18DE, SR20DE

ACCELERATOR CONTROL SYSTEM	3
Adjusting Accelerator Cable	4

CD20T

ACCELERATOR CONTROL SYSTEM	5
---	---

QG16DE, QG18DE, SR20De, CD20T

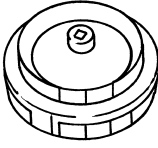
FUEL SYSTEM	6
--------------------------	---

Fuel Pump and Gauge	7
---------------------------	---

EXHAUST SYSTEM	9
-----------------------------	---

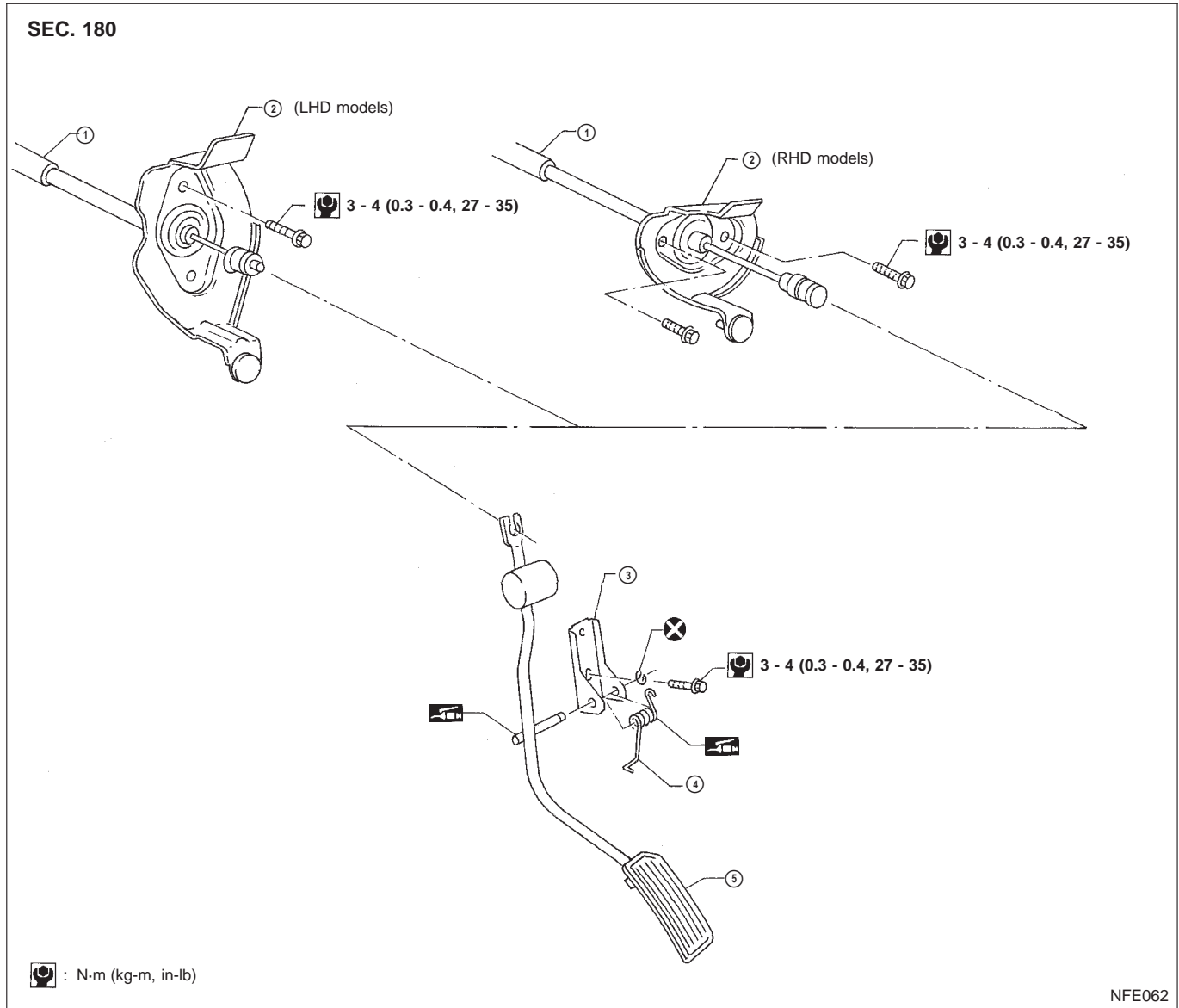
PREPARATION

Special Service Tool

Tool number Tool name	Description
KV999G0010 Fuel tank lock ring socket	 <p data-bbox="1068 298 1432 359">Removing and installing fuel tank lock ring</p> <p data-bbox="651 485 711 506">NT057</p>

CAUTION:

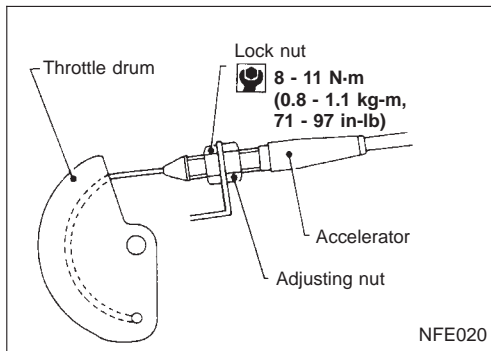
- When removing accelerator cable, mark location to indicate lock nut's initial position.
- Check that throttle valve is completely open when accelerator pedal is fully depressed. Check that throttle valve returns to idle position when accelerator pedal is released.
- Check accelerator control does not interfere with any adjacent parts.
- When connecting accelerator cable, be careful not to twist or scratch cable.



① Accelerator cable
② Cable bracket

③ Pedal bracket
④ Return spring

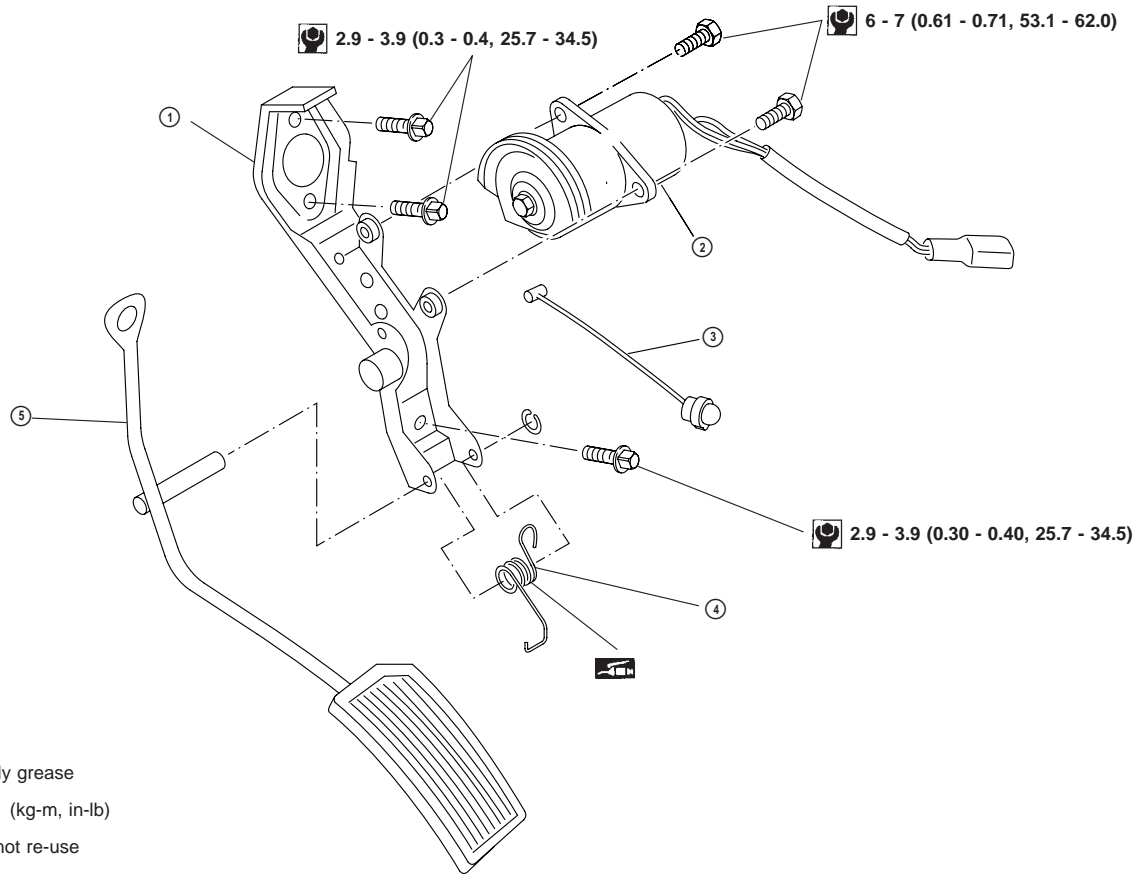
⑤ Accelerator pedal



Adjusting Accelerator Cable

1. Loosen lock nut, and tighten adjusting nut until throttle drum starts to move.
2. From that position turn back adjusting nut 1.5 to 2 turns, and secure lock nut.

SEC. 180



NFE043

- | | | |
|-------------------------------|---------------------|---------------------|
| ① Pedal bracket | ③ Accelerator cable | ⑤ Accelerator pedal |
| ② Accelerator position sensor | ④ Return spring | |

- If MIL illuminates after engine has started, refer to “ON BOARD DIAGNOSTIC SYSTEM DESCRIPTION” in EC section for instructions.

FUEL SYSTEM

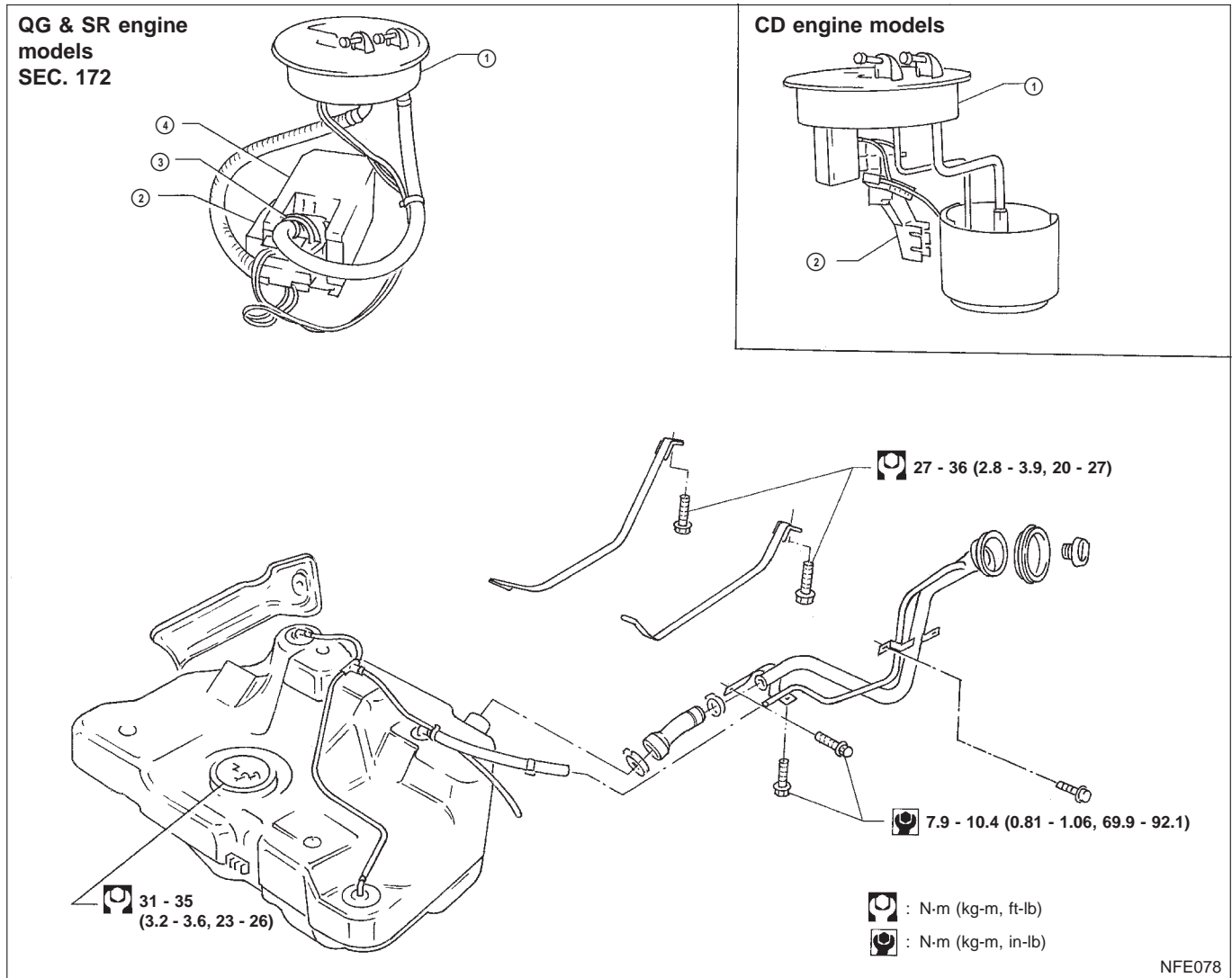
WARNING:

When replacing fuel line parts, be sure to observe the following:

- Display a “CAUTION: INFLAMMABLE” sign in workshop.
- Do not smoke while servicing fuel system. Keep open flames and sparks away from work area.
- Be sure to disconnect battery ground cable before conducting service operations.
- Be sure to furnish workshop with a CO₂ fire extinguisher.
- Pour drained fuel into an explosion-proof container then ensure container lid is installed securely.

CAUTION:

- For ECCS engine models, release fuel pressure from fuel line. Refer to EC section (“Fuel Pressure Release”, “BASIC SERVICE PROCEDURE”).
- Do not disconnect any fuel line unless absolutely necessary.
- Plug hose and pipe openings to prevent entry of dust or dirt.
- Always replace top lid seal and hose clamps with new ones.
- Do not kink or twist hoses and tubes during installation.
- Do not tighten hose clamps excessively because this could cause damage to the hose.
- Ensure fuel check valve is installed in the correct orientation. Refer to EC section (“FUEL CHECK VALVE”, “EVAPORATIVE EMISSION SYSTEM”).
- After installation, run engine and check for fuel leaks at connections.



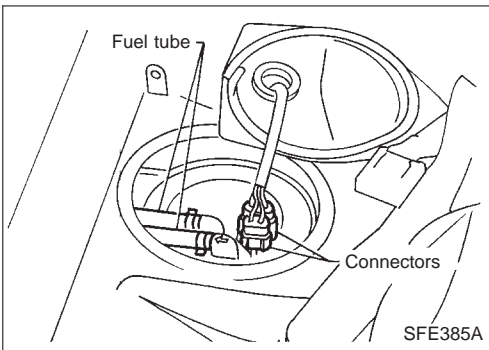
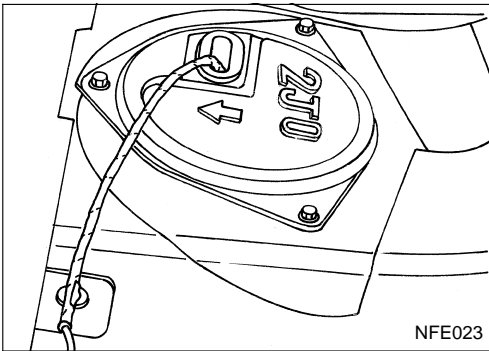
- | | |
|--------------|----------------|
| ① Top lid | ③ Fuel pump |
| ② Fuel gauge | ④ Fuel chamber |

FUEL SYSTEM

Fuel Pump and Gauge

REMOVAL

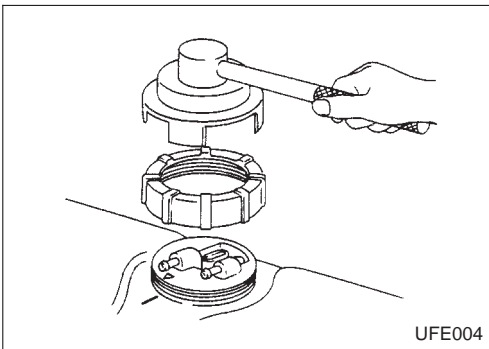
1. Release fuel pressure from fuel line.
Refer to EC section ("Fuel Pressure Release", "BASIC SERVICE PROCEDURE").
2. Remove inspection hole cover located under the rear seat.



3. Remove fuel filler lid.
4. Disconnect fuel outlet, return tube and connectors.

CAUTION:

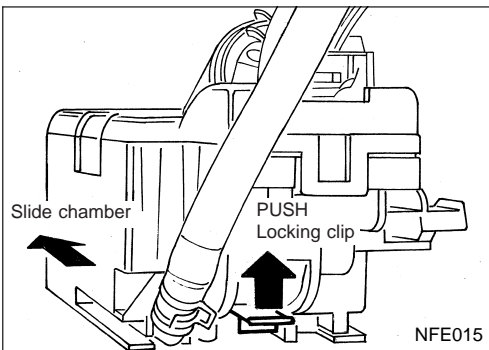
Mark the fuel tubes to ensure correct position during installation.



5. Using SST KV999G0010, remove fuel gauge locking ring.
6. Lift the top plate from the fuel tank.

CAUTION:

- Do not disconnect fuel hoses from top plate. Top plate has to be removed together with fuel chamber assy.
- For CD20T models the fuel gauge sender unit is attached to the top plate.

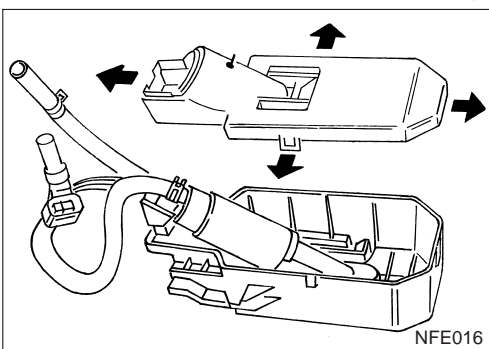


QG16DE, QG18DE & SR20DE models only:

7. Remove fuel pump with fuel tank chamber assy as follows:
 - a. Push the locking clip upwards and slide the pump chamber assy towards the rear of the vehicle.
 - b. Lift the pump chamber assy from the bracket.
 - c. Carefully remove the pump chamber assy and top plate from the tank.

CAUTION:

While removing the pump chamber assy lift the fuel gauge sender float, to prevent it from bending.



8. Take off the fuel pump chamber lid by opening out the 4 clips. Remove the fuel pump from the fuel pump chamber.
9. Remove the fuel gauge sender unit from the chamber by lifting the clip and sliding the sender unit upwards.

FUEL SYSTEM

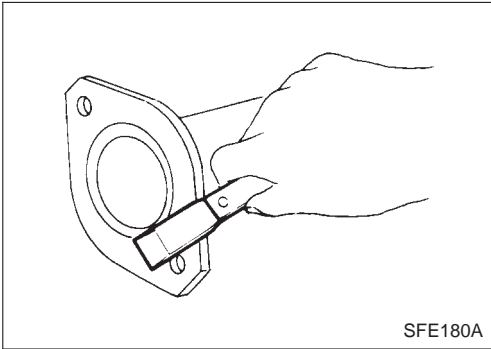
Fuel Pump and Gauge (Cont'd) INSTALLATION

Installation is reverse procedure of removal.

CAUTION:

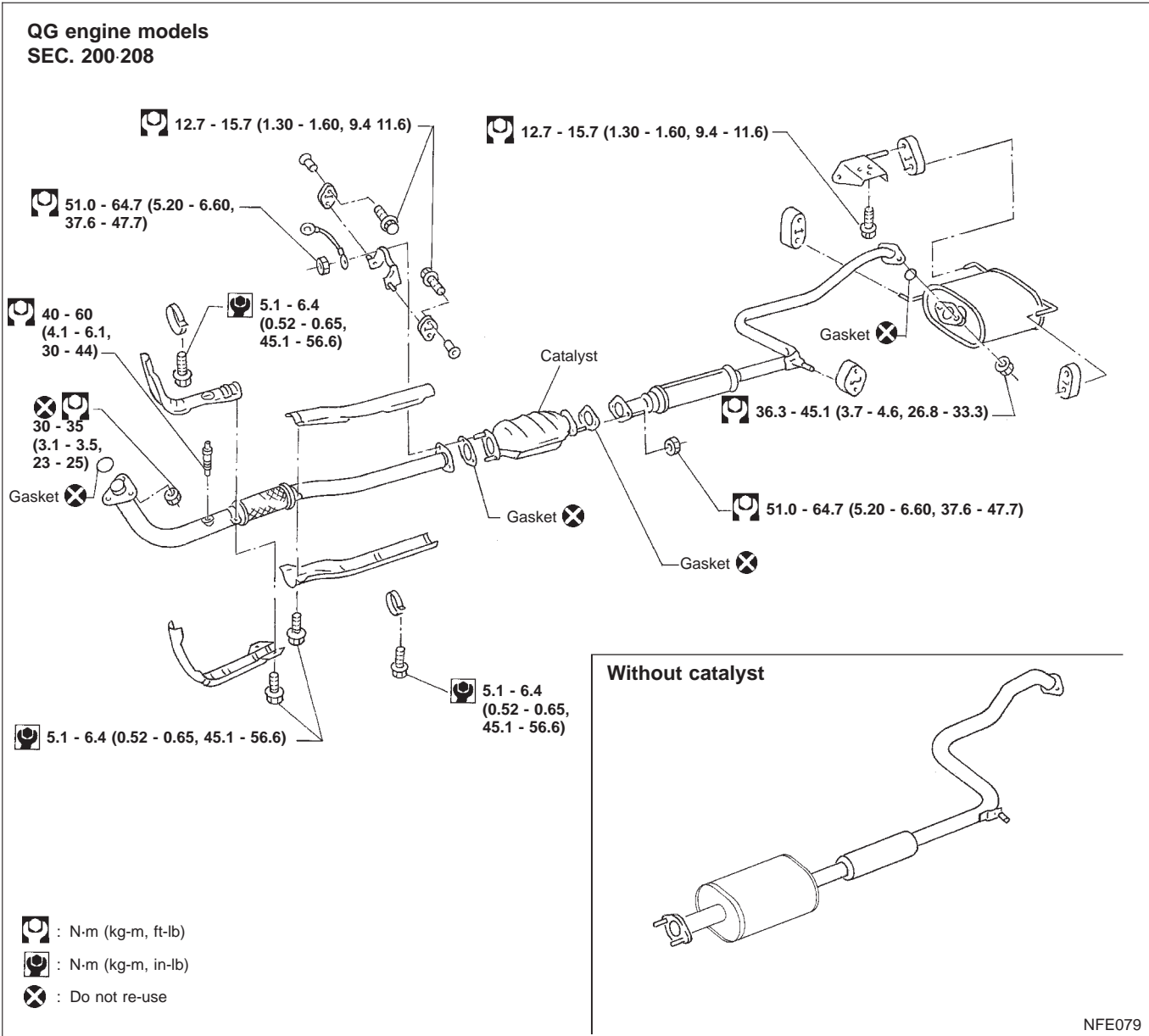
- Always use a new top plate seal.
- Use the alignment marks to position the top plate.
- Tighten to specified torque.

EXHAUST SYSTEM



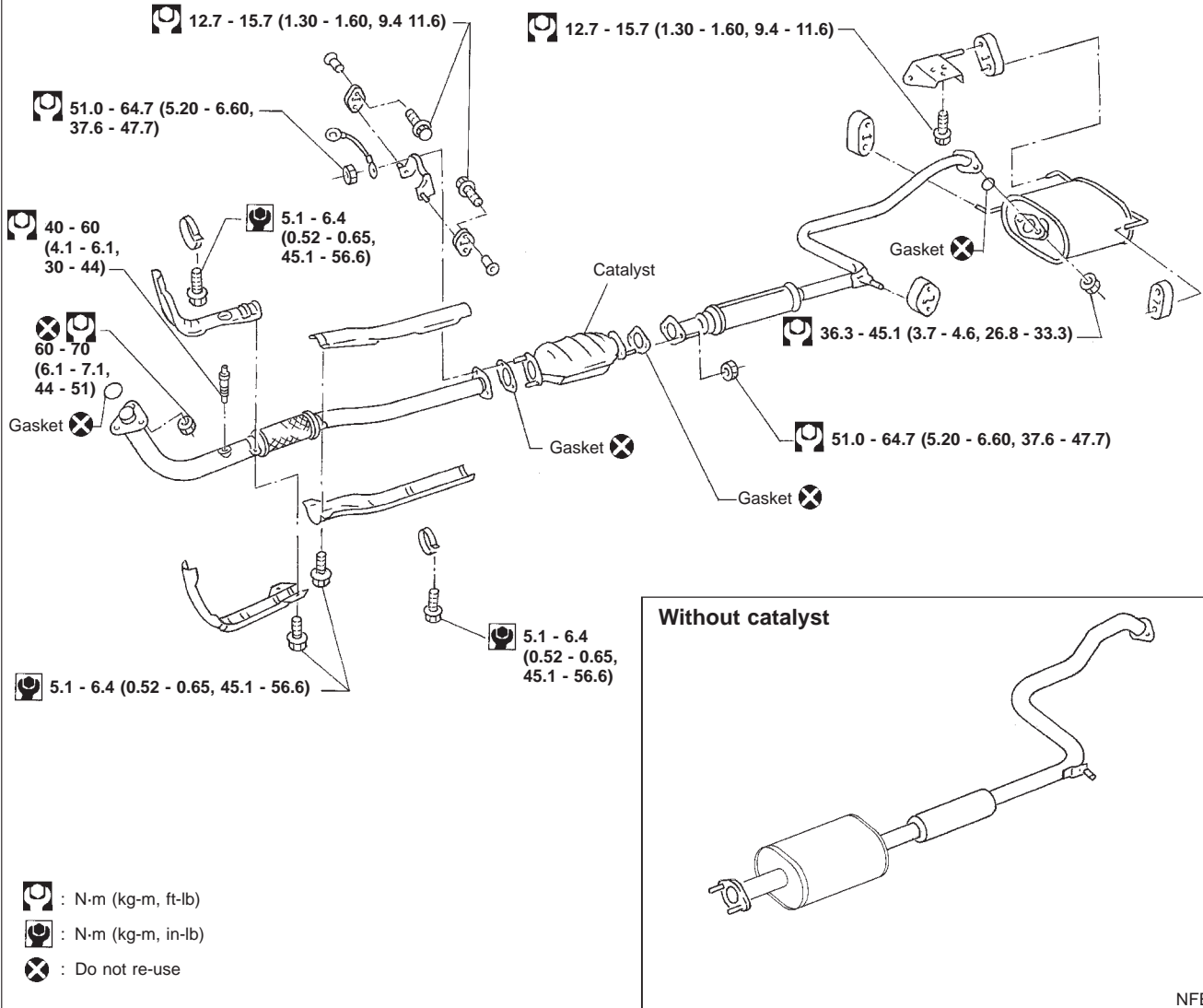
CAUTION:

- Always replace exhaust gaskets with new ones when reassembling. Scrape off all residue of old gasket from flange surface.
- With engine running, check all tube connections for exhaust gas leaks, and entire system for unusual noises.
- After installation, check to ensure that mounting brackets and mounting insulators are free from undue stress. If any of the above parts are not installed properly, excessive noise or vibration may be transmitted to the vehicle body.



EXHAUST SYSTEM

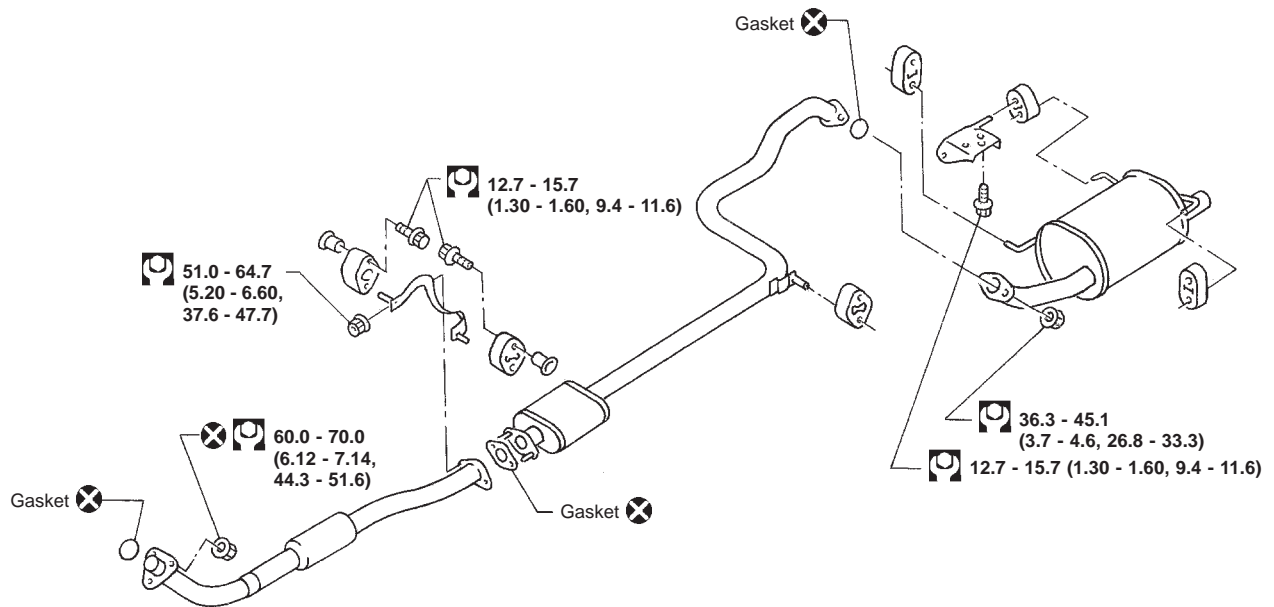
SR engine models
SEC. 200-208






NFE080

EXHAUST SYSTEM

CD engine model
SEC. 200-208



-  : N-m (kg-m, ft-lb)
-  : N-m (kg-m, in-lb)
-  : Do not re-use

NFE077

EXHAUST SYSTEM

NOTE