

SECTION **INT**  
INTERIOR

A  
B  
C  
D  
E  
F  
G  
H  
I  
INT  
K  
L  
M  
N  
O  
P

CONTENTS

<b>SYMPTOM DIAGNOSIS</b> .....	2	<b>REAR DOOR FINISHER</b> .....	12
<b>SQUEAK AND RATTLE TROUBLE DIAG- NOSES</b> .....	2	REAR DOOR FINISHER : Exploded View .....	13
Work Flow .....	2	REAR DOOR FINISHER : Removal and Installa- tion .....	13
Inspection Procedure .....	4	<b>BODY SIDE TRIM</b> .....	16
Diagnostic Worksheet .....	6	Exploded View .....	16
<b>PRECAUTION</b> .....	8	Removal and Installation .....	16
<b>PRECAUTIONS</b> .....	8	<b>FLOOR TRIM</b> .....	19
Precaution for Supplemental Restraint System (SRS) "AIR BAG" and "SEAT BELT PRE-TEN- SIONER" .....	8	Exploded View .....	19
Precaution Necessary for Steering Wheel Rota- tion After Battery Disconnect .....	8	Removal and Installation .....	19
Precaution for Work .....	8	<b>HEADLINING</b> .....	22
<b>PREPARATION</b> .....	9	<b>NORMAL ROOF</b> .....	22
<b>PREPARATION</b> .....	9	NORMAL ROOF : Exploded View .....	22
Commercial Service Tools .....	9	NORMAL ROOF : Removal and Installation .....	22
<b>ON-VEHICLE REPAIR</b> .....	10	<b>SUNROOF</b> .....	24
<b>DOOR FINISHER</b> .....	10	SUNROOF : Exploded View .....	25
<b>FRONT DOOR FINISHER</b> .....	10	SUNROOF : Removal and Installation .....	25
FRONT DOOR FINISHER : Exploded View .....	10	<b>LUGGAGE FLOOR TRIM</b> .....	28
FRONT DOOR FINISHER : Removal and Installa- tion .....	10	Exploded View .....	28
		Removal and Installation .....	28
		<b>BACK DOOR TRIM</b> .....	31
		Exploded View .....	31
		Removal and Installation .....	31

# SQUEAK AND RATTLE TROUBLE DIAGNOSES

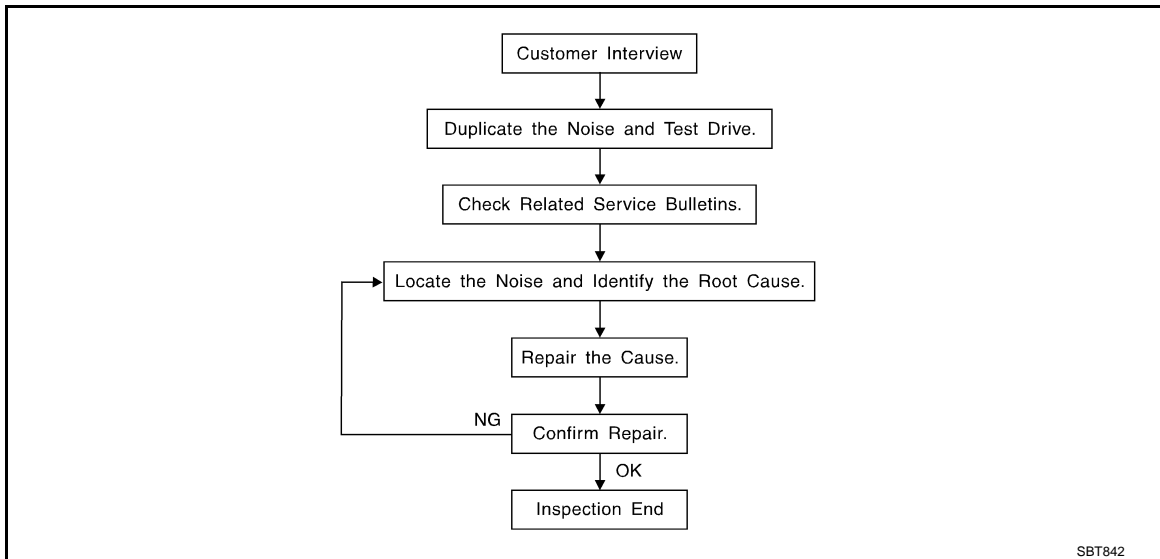
< SYMPTOM DIAGNOSIS >

## SYMPTOM DIAGNOSIS

### SQUEAK AND RATTLE TROUBLE DIAGNOSES

#### Work Flow

INFOID:000000001160453



#### CUSTOMER INTERVIEW

Interview the customer if possible, to determine the conditions that exist when the noise occurs. Use the Diagnostic Worksheet during the interview to document the facts and conditions when the noise occurs and any of the customer's comments; refer to [INT-6. "Diagnostic Worksheet"](#). This information is necessary to duplicate the conditions that exist when the noise occurs.

- The customer may not be able to provide a detailed description or the location of the noise. Attempt to obtain all the facts and conditions that exist when the noise occurs (or does not occur).
- If there is more than one noise in the vehicle, be sure to diagnose and repair the noise that the customer is concerned about. This can be accomplished by a test drive with the customer.
- After identifying the type of noise, isolate the noise in terms of its characteristics. The noise characteristics are provided so the customer, service adviser and technician are all speaking the same language when defining the noise.
- Squeak – (Like tennis shoes on a clean floor)  
Squeak characteristics include the light contact/fast movement/brought on by road conditions/hard surfaces = higher pitch noise/softer surfaces = lower pitch noises/edge to surface = chirping
- Creak – (Like walking on an old wooden floor)  
Creak characteristics include firm contact/slow movement/twisting with a rotational movement/pitch dependent on materials/often brought on by activity.
- Rattle – (Like shaking a baby rattle)  
Rattle characteristics include the fast repeated contact/vibration or similar movement/loose parts/missing clip or fastener/incorrect clearance.
- Knock – (Like a knock on a door)  
Knock characteristics include hollow sounding/sometimes repeating/often brought on by driver action.
- Tick – (Like a clock second hand)  
Tick characteristics include gentle contacting of light materials/loose components/can be caused by driver action or road conditions.
- Thump – (Heavy, muffled knock noise)  
Thump characteristics include softer knock/dead sound often brought on by activity.
- Buzz – (Like a bumble bee)  
Buzz characteristics include high frequency rattle/firm contact.
- Often the degree of acceptable noise level will vary depending upon the person. A noise that you may judge as acceptable may be very irritating to the customer.
- Weather conditions, especially humidity and temperature, may have a great effect on noise level.

#### DUPLICATE THE NOISE AND TEST DRIVE

# SQUEAK AND RATTLE TROUBLE DIAGNOSES

## < SYMPTOM DIAGNOSIS >

If possible, drive the vehicle with the customer until the noise is duplicated. Note any additional information on the Diagnostic Worksheet regarding the conditions or location of the noise. This information can be used to duplicate the same conditions when you confirm the repair.

If the noise can be duplicated easily during the test drive, to help identify the source of the noise, try to duplicate the noise with the vehicle stopped by doing one or all of the following:

- 1) Close a door.
  - 2) Tap or push/pull around the area where the noise appears to be coming from.
  - 3) Rev the engine.
  - 4) Use a floor jack to recreate vehicle "twist".
  - 5) At idle, apply engine load (electrical load, half-clutch on M/T model, drive position on A/T model).
  - 6) Raise the vehicle on a hoist and hit a tire with a rubber hammer.
- Drive the vehicle and attempt to duplicate the conditions the customer states exist when the noise occurs.
  - If it is difficult to duplicate the noise, drive the vehicle slowly on an undulating or rough road to stress the vehicle body.

## LOCATE THE NOISE AND IDENTIFY THE ROOT CAUSE

1. Narrow down the noise to a general area. To help pinpoint the source of the noise, use a listening tool (Engine Ear or mechanics stethoscope).
2. Narrow down the noise to a more specific area and identify the cause of the noise by:
  - Removing the components in the area that you suspect the noise is coming from.  
Do not use too much force when removing clips and fasteners, otherwise clips and fastener can be broken or lost during the repair, resulting in the creation of new noise.
  - Tapping or pushing/pulling the component that you suspect is causing the noise.  
Do not tap or push/pull the component with excessive force, otherwise the noise will be eliminated only temporarily.
  - Feeling for a vibration with your hand by touching the component(s) that you suspect is (are) causing the noise.
  - Placing a piece of paper between components that you suspect are causing the noise.
  - Looking for loose components and contact marks.  
Refer to [INT-4, "Inspection Procedure"](#).

## REPAIR THE CAUSE

- If the cause is a loose component, tighten the component securely.
- If the cause is insufficient clearance between components:
  - Separate components by repositioning or loosening and retightening the component, if possible.
  - Insulate components with a suitable insulator such as urethane pads, foam blocks, felt cloth tape or urethane tape are available through your authorized Nissan Parts Department.

### **CAUTION:**

**Do not use excessive force as many components are constructed of plastic and may be damaged.**

### **NOTE:**

- URETHANE PADS  
Insulates connectors, harness, etc.
- INSULATOR (Foam blocks)  
Insulates components from contact. Can be used to fill space behind a panel.
- INSULATOR (Light foam block)
- FELT CLOTHTAPE  
Used to insulate where movement does not occur. Ideal for instrument panel applications.  
The following materials, not available through NISSAN Parts Department, can also be used to repair squeaks and rattles.
- UHMW(TEFLON) TAPE  
Insulates where slight movement is present. Ideal for instrument panel applications.
- SILICONE GREASE  
Used in place of UHMW tape that will be visible or not fit.  
Note: Will only last a few months.
- SILICONE SPRAY  
Use when grease cannot be applied.
- DUCT TAPE  
Use to eliminate movement.

## CONFIRM THE REPAIR

# SQUEAK AND RATTLE TROUBLE DIAGNOSES

## < SYMPTOM DIAGNOSIS >

Confirm that the cause of a noise is repaired by test driving the vehicle. Operate the vehicle under the same conditions as when the noise originally occurred. Refer to the notes on the Diagnostic Worksheet.

### Inspection Procedure

INFOID:000000001160454

Refer to Table of Contents for specific component removal and installation information.

#### INSTRUMENT PANEL

Most incidents are caused by contact and movement between:

1. Cluster lid A and instrument panel
2. Acrylic lens and combination meter housing
3. Instrument panel to front pillar garnish
4. Instrument panel to windshield
5. Instrument panel mounting pins
6. Wiring harnesses behind the combination meter
7. A/C defroster duct and duct joint

These incidents can usually be located by tapping or moving the components to duplicate the noise or by pressing on the components while driving to stop the noise. Most of these incidents can be repaired by applying felt cloth tape or silicon spray (in hard to reach areas). Urethane pads can be used to insulate wiring harness.

#### **CAUTION:**

**Do not use silicone spray to isolate a squeak or rattle. If you saturate the area with silicone, you will not be able to recheck the repair.**

#### CENTER CONSOLE

Components to pay attention to include:

1. Shifter assembly cover to finisher
2. A/C control unit and cluster lid C
3. Wiring harnesses behind audio and A/C control unit

The instrument panel repair and isolation procedures also apply to the center console.

#### DOORS

Pay attention to the:

1. Finisher and inner panel making a slapping noise
2. Inside handle escutcheon to door finisher
3. Wiring harnesses tapping
4. Door striker out of alignment causing a popping noise on starts and stops

Tapping or moving the components or pressing on them while driving to duplicate the conditions can isolate many of these incidents. You can usually insulate the areas with felt cloth tape or insulator foam blocks to repair the noise.

#### TRUNK

Trunk noises are often caused by a loose jack or loose items put into the trunk by the owner.

In addition look for:

1. Trunk lid dumpers out of adjustment
2. Trunk lid striker out of adjustment
3. Trunk lid torsion bars knocking together
4. A loose license plate or bracket

Most of these incidents can be repaired by adjusting, securing or insulating the item(s) or component(s) causing the noise.

#### SUNROOF/HEADLINING

Noises in the sunroof/headlining area can often be traced to one of the following:

1. Sunroof lid, rail, linkage or seals making a rattle or light knocking noise
2. Sunvisor shaft shaking in the holder
3. Front or rear windshield touching headlining and squeaking

# SQUEAK AND RATTLE TROUBLE DIAGNOSES

## < SYMPTOM DIAGNOSIS >

Again, pressing on the components to stop the noise while duplicating the conditions can isolate most of these incidents. Repairs usually consist of insulating with felt cloth tape.

A

### SEATS

When isolating seat noise it is important to note the position the seat is in and the load placed on the seat when the noise is present. These conditions should be duplicated when verifying and isolating the cause of the noise.

B

Cause of seat noise include:

1. Headrest rods and holder
2. A squeak between the seat pad cushion and frame
3. Rear seatback lock and bracket

C

These noises can be isolated by moving or pressing on the suspected components while duplicating the conditions under which the noise occurs. Most of these incidents can be repaired by repositioning the component or applying urethane tape to the contact area.

D

### UNDERHOOD

Some interior noise may be caused by components under the hood or on the engine wall. The noise is then transmitted into the passenger compartment.

E

Causes of transmitted underhood noise include:

1. Any component mounted to the engine wall
2. Components that pass through the engine wall
3. Engine wall mounts and connectors
4. Loose radiator mounting pins
5. Hood bumpers out of adjustment
6. Hood striker out of adjustment

F

G

H

These noises can be difficult to isolate since they cannot be reached from the interior of the vehicle. The best method is to secure, move or insulate one component at a time and test drive the vehicle. Also, engine RPM or load can be changed to isolate the noise. Repairs can usually be made by moving, adjusting, securing, or insulating the component causing the noise.

I

INT

K

L

M

N

O

P

# SQUEAK AND RATTLE TROUBLE DIAGNOSES

< SYMPTOM DIAGNOSIS >

## Diagnostic Worksheet

INFOID:000000001160455



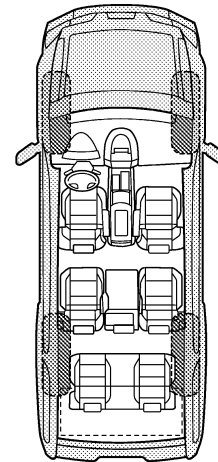
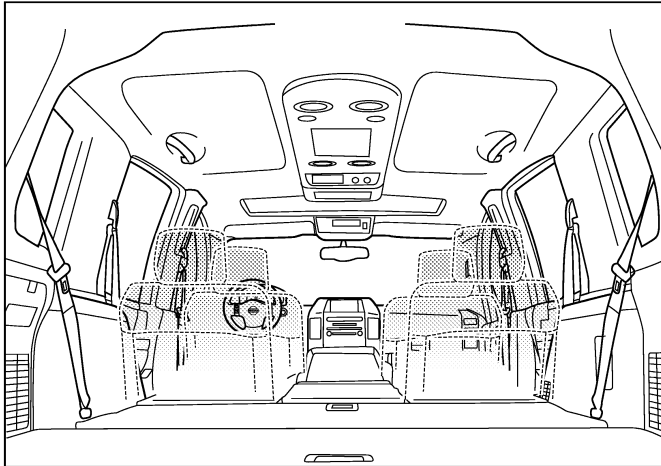
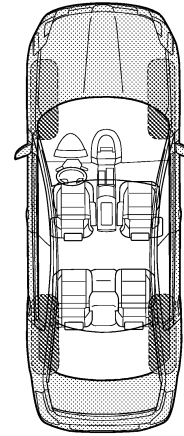
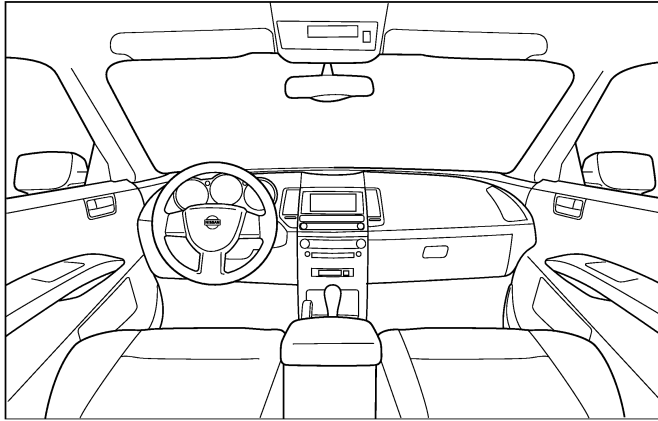
### SQUEAK & RATTLE DIAGNOSTIC WORKSHEET

Dear Nissan Customer:

We are concerned about your satisfaction with your Nissan vehicle. Repairing a squeak or rattle sometimes can be very difficult. To help us fix your Nissan right the first time, please take a moment to note the area of the vehicle where the squeak or rattle occurs and under what conditions. You may be asked to take a test drive with a service advisor or technician to ensure we confirm the noise you are hearing.

#### I. WHERE DOES THE NOISE COME FROM? (circle the area of the vehicle)

The illustrations are for reference only, and may not reflect the actual configuration of your vehicle.



Continue to page 2 of the worksheet and briefly describe the location of the noise or rattle. In addition, please indicate the conditions which are present when the noise occurs.

PIIB8740E

# SQUEAK AND RATTLE TROUBLE DIAGNOSES

< SYMPTOM DIAGNOSIS >

## SQUEAK & RATTLE DIAGNOSTIC WORKSHEET - page 2

Briefly describe the location where the noise occurs:

---

---

### II. WHEN DOES IT OCCUR? (please check the boxes that apply)

- |   |  |
|---|--|
| <input type="checkbox"/> anytime                      | <input type="checkbox"/> after sitting out in the rain |
| <input type="checkbox"/> 1st time in the morning      | <input type="checkbox"/> when it is raining or wet     |
| <input type="checkbox"/> only when it is cold outside | <input type="checkbox"/> dry or dusty conditions       |
| <input type="checkbox"/> only when it is hot outside  | <input type="checkbox"/> other:                        |

### III. WHEN DRIVING:

- through driveways
- over rough roads
- over speed bumps
- only about \_\_\_\_ mph
- on acceleration
- coming to a stop
- on turns: left, right or either (circle)
- with passengers or cargo
- other: \_\_\_\_\_
- after driving \_\_\_\_ miles or \_\_\_\_ minutes

### IV. WHAT TYPE OF NOISE

- squeak (like tennis shoes on a clean floor)
- creak (like walking on an old wooden floor)
- rattle (like shaking a baby rattle)
- knock (like a knock at the door)
- tick (like a clock second hand)
- thump (heavy, muffled knock noise)
- buzz (like a bumble bee)

### TO BE COMPLETED BY DEALERSHIP PERSONNEL

#### Test Drive Notes:

---

---

---

	YES	NO	Initials of person performing
Vehicle test driven with customer	<input type="checkbox"/>	<input type="checkbox"/>	_____
- Noise verified on test drive	<input type="checkbox"/>	<input type="checkbox"/>	_____
- Noise source located and repaired	<input type="checkbox"/>	<input type="checkbox"/>	_____
- Follow up test drive performed to confirm repair	<input type="checkbox"/>	<input type="checkbox"/>	_____

VIN: \_\_\_\_\_ Customer Name: \_\_\_\_\_  
W.O.# \_\_\_\_\_ Date: \_\_\_\_\_

This form must be attached to Work Order

PIIB8742E

A  
B  
C  
D  
E  
F  
G  
H  
I  
INT  
K  
L  
M  
N  
O  
P

# PRECAUTIONS

< PRECAUTION >

## PRECAUTION

### PRECAUTIONS

#### Precaution for Supplemental Restraint System (SRS) "AIR BAG" and "SEAT BELT PRE-TENSIONER"

INFOID:000000001298031

The Supplemental Restraint System such as "AIR BAG" and "SEAT BELT PRE-TENSIONER", used along with a front seat belt, helps to reduce the risk or severity of injury to the driver and front passenger for certain types of collision. Information necessary to service the system safely is included in the "SRS AIRBAG" and "SEAT BELT" of this Service Manual.

#### **WARNING:**

- To avoid rendering the SRS inoperative, which could increase the risk of personal injury or death in the event of a collision which would result in air bag inflation, all maintenance must be performed by an authorized NISSAN/INFINITI dealer.
- Improper maintenance, including incorrect removal and installation of the SRS, can lead to personal injury caused by unintentional activation of the system. For removal of Spiral Cable and Air Bag Module, see the "SRS AIRBAG".
- Do not use electrical test equipment on any circuit related to the SRS unless instructed to in this Service Manual. SRS wiring harnesses can be identified by yellow and/or orange harnesses or harness connectors.

#### Precaution Necessary for Steering Wheel Rotation After Battery Disconnect

INFOID:000000001298032

#### **NOTE:**

- This Procedure is applied only to models with Intelligent Key system and NATS (NISSAN ANTI-THEFT SYSTEM).
- Remove and install all control units after disconnecting both battery cables with the ignition knob in the "LOCK" position.
- Always use CONSULT-III to perform self-diagnosis as a part of each function inspection after finishing work. If DTC is detected, perform trouble diagnosis according to self-diagnostic results.

For models equipped with the Intelligent Key system and NATS, an electrically controlled steering lock mechanism is adopted on the key cylinder.

For this reason, if the battery is disconnected or if the battery is discharged, the steering wheel will lock and steering wheel rotation will become impossible.

If steering wheel rotation is required when battery power is interrupted, follow the procedure below before starting the repair operation.

#### OPERATION PROCEDURE

1. Connect both battery cables.

#### **NOTE:**

Supply power using jumper cables if battery is discharged.

2. Use the Intelligent Key or mechanical key to turn the ignition switch to the "ACC" position. At this time, the steering lock will be released.
3. Disconnect both battery cables. The steering lock will remain released and the steering wheel can be rotated.
4. Perform the necessary repair operation.
5. When the repair work is completed, return the ignition switch to the "LOCK" position before connecting the battery cables. (At this time, the steering lock mechanism will engage.)
6. Perform a self-diagnosis check of all control units using CONSULT-III.

#### Precaution for Work

INFOID:000000001160458

- After removing and installing the opening/closing parts, be sure to carry out fitting adjustments to check their operation.
- Check the lubrication level, damage, and wear of each part. If necessary, grease or replace it.



# PREPARATION

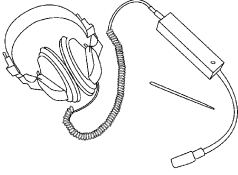
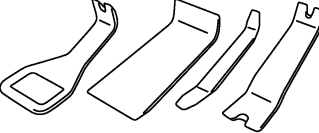
< PREPARATION >

## PREPARATION

### PREPARATION

#### Commercial Service Tools

INFOID:000000001160459

Tool name	Description
<p data-bbox="159 520 267 546">Engine ear</p>  <p data-bbox="795 630 860 651">SIA0995E</p>	<p data-bbox="1006 520 1193 546">Location the noise.</p>
<p data-bbox="159 772 292 798">Remover tool</p>  <p data-bbox="795 882 860 903">PIIB7923J</p>	<p data-bbox="1006 772 1339 798">Remove clips, pawls, metal clips.</p>

A

B

C

D

E

F

G

H

I

INT

K

L

M

N

O

P

# DOOR FINISHER

< ON-VEHICLE REPAIR >

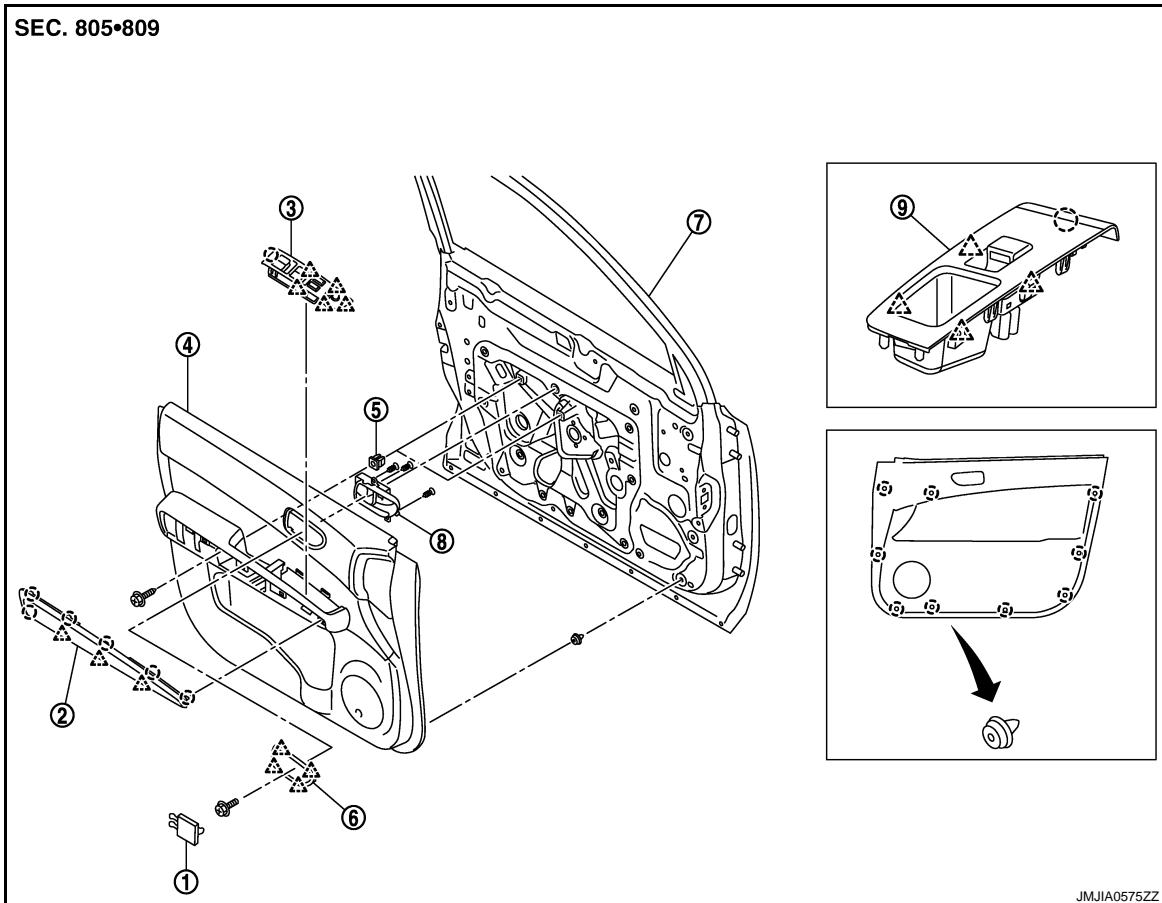
## ON-VEHICLE REPAIR

### DOOR FINISHER

#### FRONT DOOR FINISHER

#### FRONT DOOR FINISHER : Exploded View

INFOID:000000001160460



- |                        |                             |                                    |
|------------------------|-----------------------------|------------------------------------|
| 1. Door finisher cap   | 2. Armrest finisher         | 3. Power window switch finisher LH |
| 4. Front door finisher | 5. Grommet                  | 6. Inside handle escutcheon        |
| 7. Front door panel    | 8. Front door inside handle | 9. Power window switch finisher RH |

- : Clip  
△ : Pawl

### FRONT DOOR FINISHER : Removal and Installation

INFOID:000000001160461


#### REMOVAL

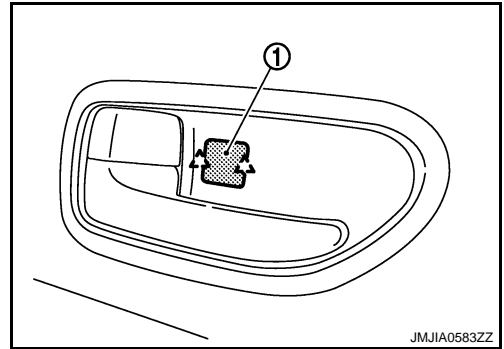
1. Fully open front door window.

# DOOR FINISHER

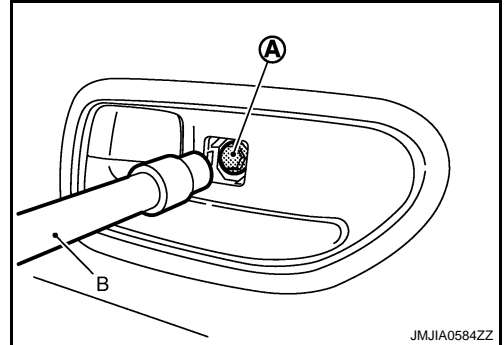
## < ON-VEHICLE REPAIR >

- Remove door finisher cap (1) with remover tool.


 : Pawl




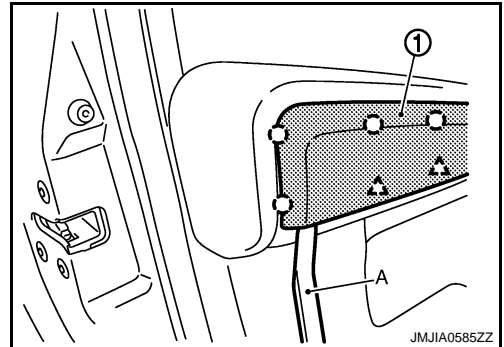
- Remove bolt (A) using tool (B), located on the back side of door finisher cap.



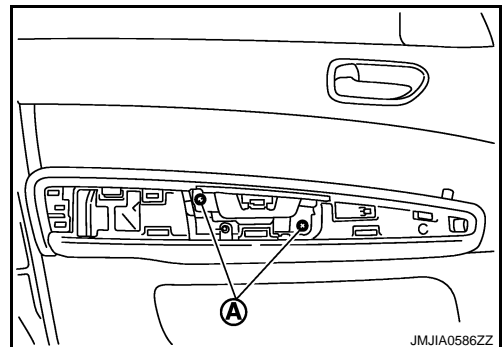
- Remove armrest finisher (1) with remover tool (A).

 : Clip


 : Pawl




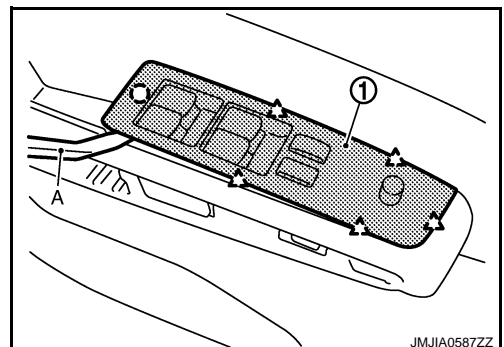
- Remove screws (A), as shown in the figure.



- Pull up power window switch finisher (1) with remover tool (A).

 : Clip

 : Pawl




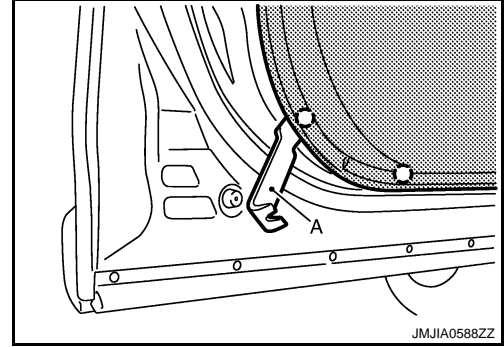
A  
B  
C  
D  
E  
F  
G  
H  
I  
INT  
K  
L  
M  
N  
O  
P

# DOOR FINISHER

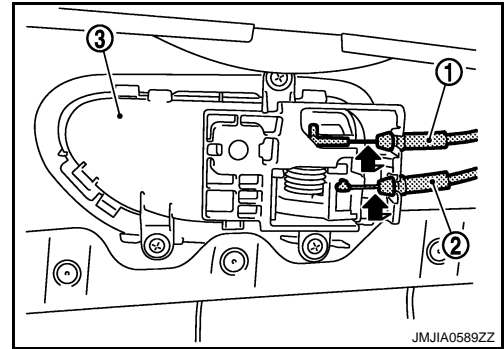
## < ON-VEHICLE REPAIR >

7. Disconnect power window switch connector, and then remove power window switch finisher.
8. Insert remover tool (A) between door finisher and door panel to disengage door finisher mounting clips, starting from the bottom and working to the top.

 : Clip



9. Pull up door finisher and pull out toward vehicle inside.
10. Disconnect lock knob cable (1) and inside handle cable (2) from door inside handle assembly (3).



11. Remove front door finisher.
12. Remove the following parts after removing door finisher.
  - Inside handle. Refer to [DLK-281, "INSIDE HANDLE : Removal and Installation"](#).
  - Inside handle escutcheon.

## INSTALLATION

Install in the reverse order of removal.

### **CAUTION:**

**When installing door finisher, check that clips are securely fitted in panel holes on body, and then press them in.**

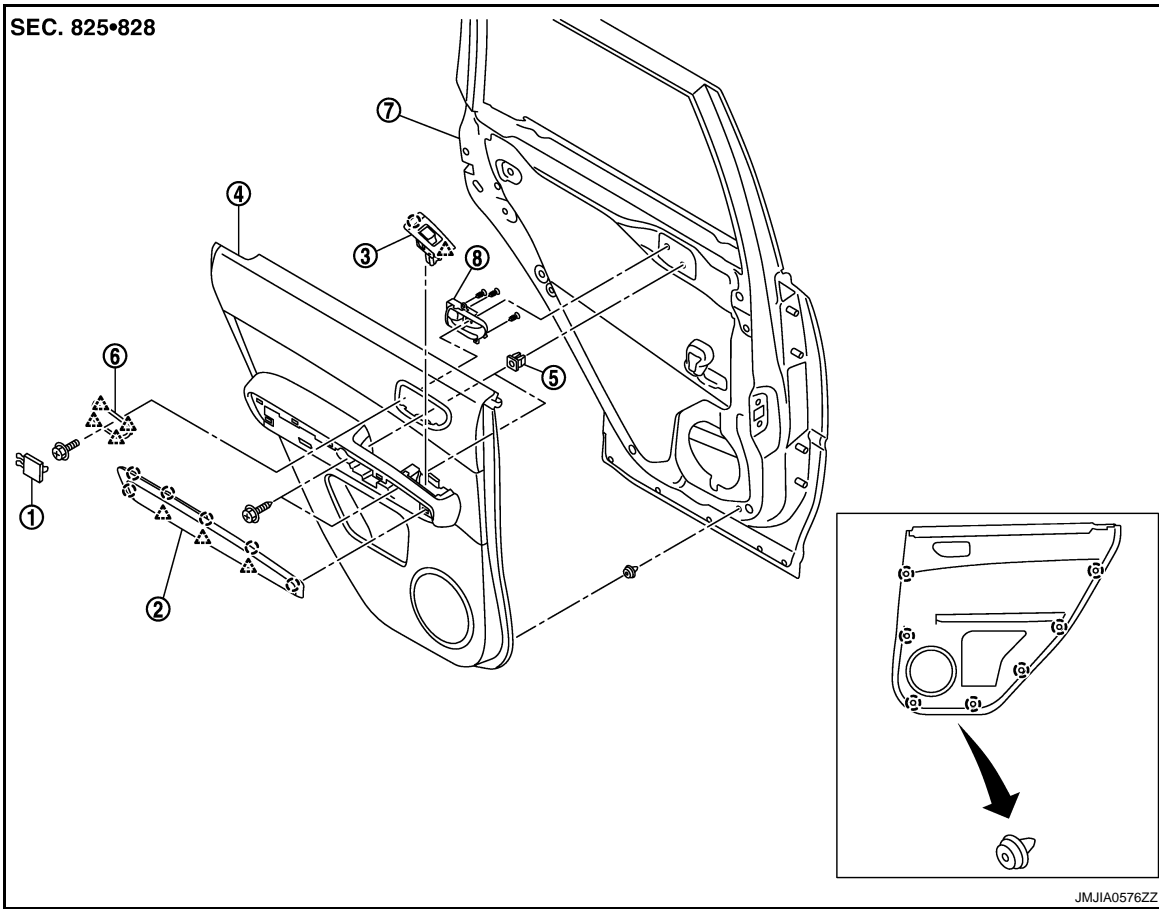
## REAR DOOR FINISHER

# DOOR FINISHER

< ON-VEHICLE REPAIR >

## REAR DOOR FINISHER : Exploded View

INFOID:000000001160462



- |                       |                            |                                 |
|-----------------------|----------------------------|---------------------------------|
| 1. Door finisher cap  | 2. Armrest finisher        | 3. Power window switch finisher |
| 4. Rear door finisher | 5. Grommet                 | 6. Inside handle escutcheon     |
| 7. Rear door panel    | 8. Rear door inside handle |                                 |

- : Clip  
 △ : Pawl

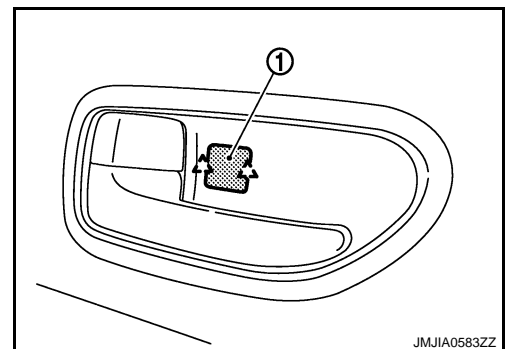
## REAR DOOR FINISHER : Removal and Installation

INFOID:000000001315027

### REMOVAL

1. Fully open rear door window.
2. Remove door finisher cap (1) with remover tool.

- △ : Pawl

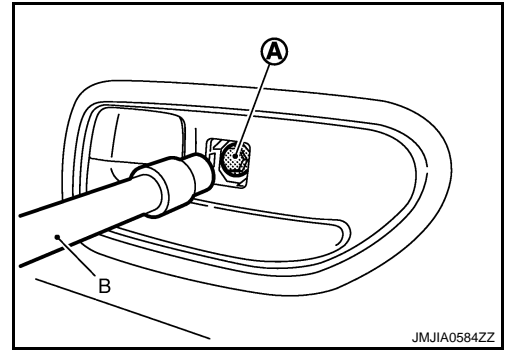


A  
B  
C  
D  
E  
F  
G  
H  
I  
INT  
K  
L  
M  
N  
O  
P

# DOOR FINISHER

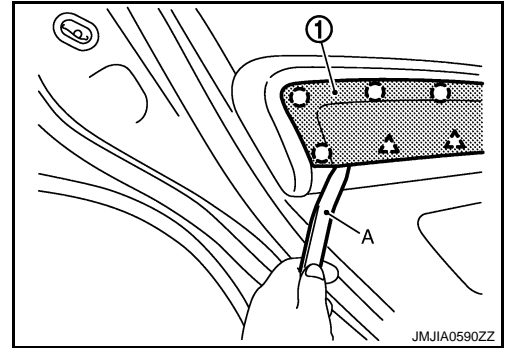
## < ON-VEHICLE REPAIR >

3. Remove bolt (A) using tool (B), located on the back side of door finisher cap.

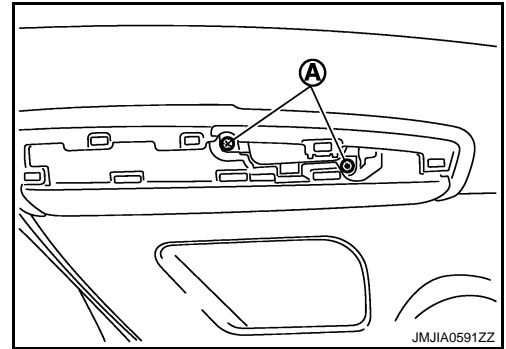


4. Remove armrest finisher (1) with remover tool (A).

○ : Clip  
△ : Pawl

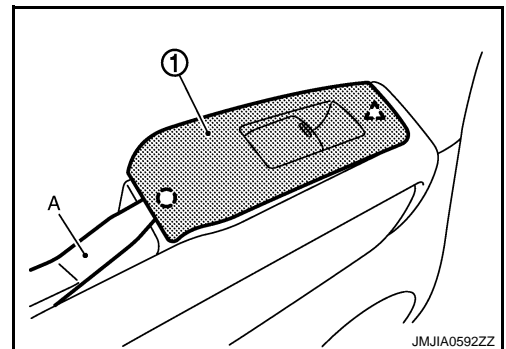


5. Remove screws (A), as shown in the figure.



6. Pull up power window switch finisher (1) with remover tool (A).

○ : Clip  
△ : Pawl




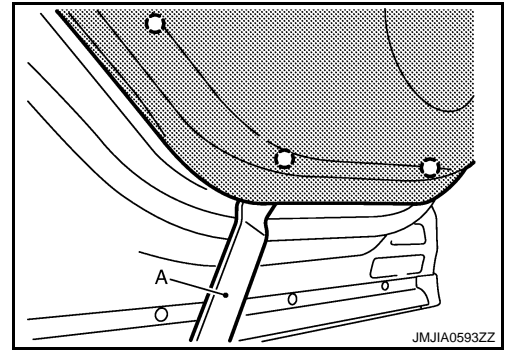
7. Disconnect power window switch connector, and then remove power window switch finisher.

# DOOR FINISHER

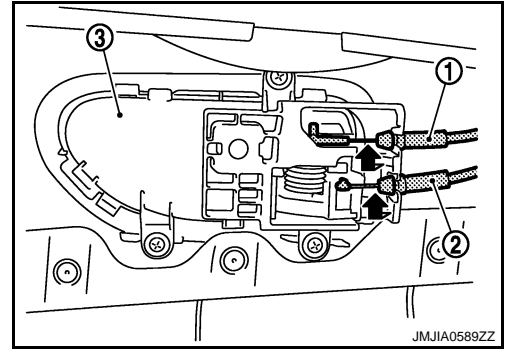
## < ON-VEHICLE REPAIR >

8. Insert remover tool (A) between door finisher and door panel to disengage door finisher mounting clips, starting from the bottom and working to the top.

 : Clip



9. Pull up door finisher and pull out toward vehicle inside.
10. Disconnect lock knob cable (1) and inside handle cable (2) from door inside handle assembly (3).



11. Remove rear door finisher.
12. Remove the following parts after removing door finisher.
  - Inside handle. Refer to [DLK-287. "INSIDE HANDLE : Removal and Installation"](#).
  - Inside handle escutcheon.

## INSTALLATION

Install in the reverse order of removal.

### **CAUTION:**

**When installing door finisher, check that clips are securely fitted in panel holes on body, and then press them in.**

A  
B  
C  
D  
E  
F  
G  
H  
I  
INT  
K  
L  
M  
N  
O  
P

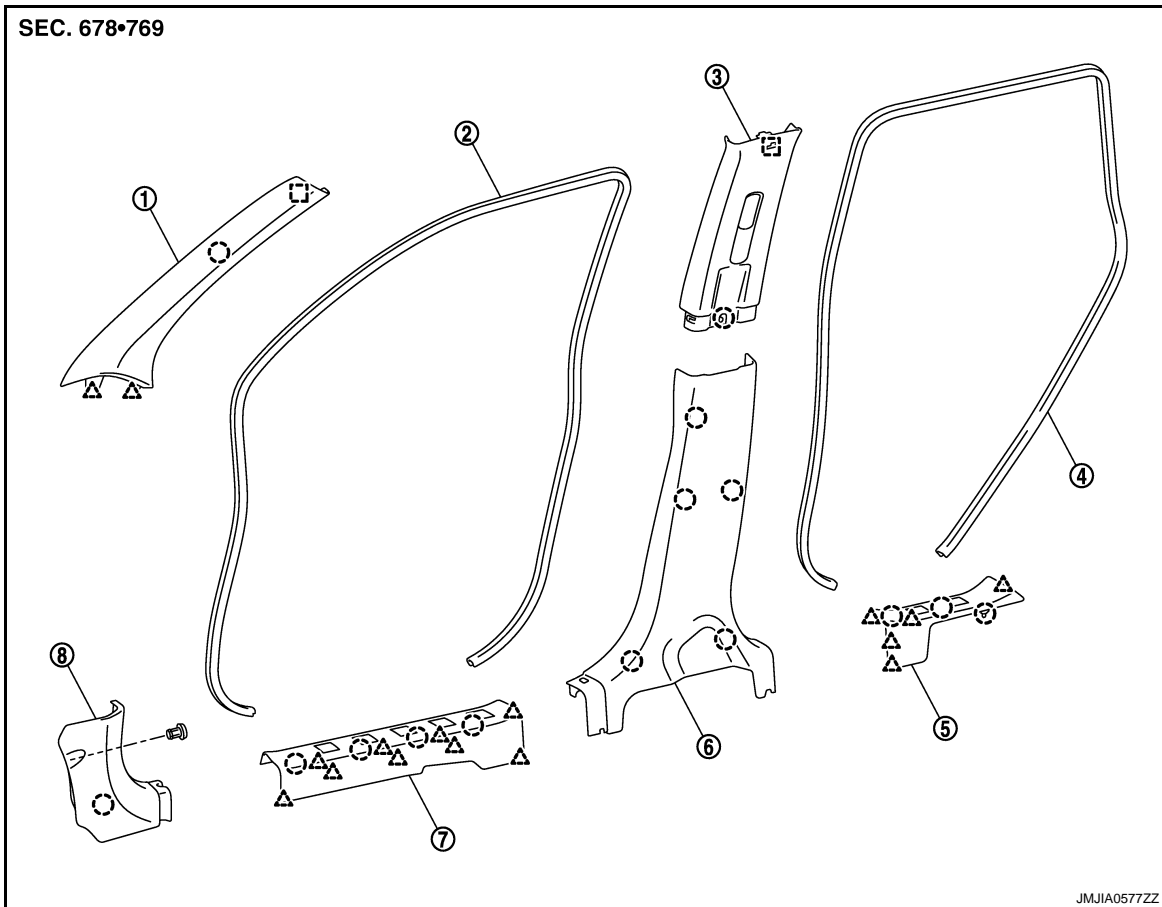
# BODY SIDE TRIM

< ON-VEHICLE REPAIR >

## BODY SIDE TRIM

Exploded View

INFOID:000000001160464



- |                         |                         |                                |
|-------------------------|-------------------------|--------------------------------|
| 1. Front pillar garnish | 2. Front body side welt | 3. Center pillar upper garnish |
| 4. Rear body side welt  | 5. Rear kicking plate   | 6. Center pillar lower garnish |
| 7. Front kicking plate  | 8. Dash side finisher   |                                |

○ : Clip

△ : Pawl

□ : Metal clip

### Removal and Installation

INFOID:000000001160465

#### **CAUTION:**

**Wrap the tip of flat-bladed screwdriver with a cloth when removing metal clips from garnishes.**

#### REMOVAL

##### FRONT PILLAR GARNISH

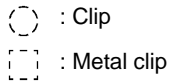
1. Remove front body side welt.



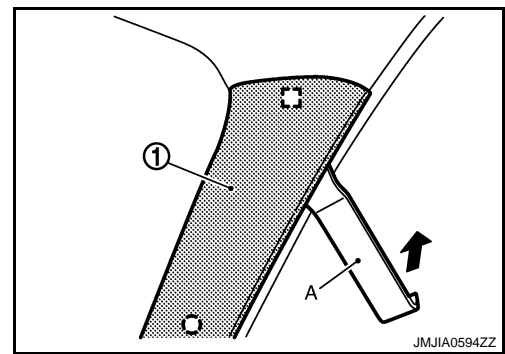
## BODY SIDE TRIM

### < ON-VEHICLE REPAIR >

2. Disengage front pillar garnish (1) mounting metal clip and pawl using remover tool (A).

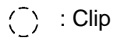


3. Once free, pull front pillar garnish (1) upwards to disengage the lower locating tab from instrument panel.
4. Remove front pillar garnish (1).

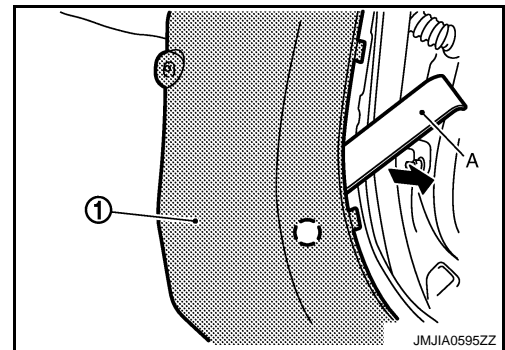


### DASH SIDE FINISHER

1. Remove front kicking plate.
2. Remove front body side welt.
3. Remove dash side finisher fixing nut.
4. Disengage dash side finisher (1) mounting clip using remover tool (A).

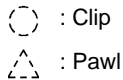


5. Remove dash side finisher (1).

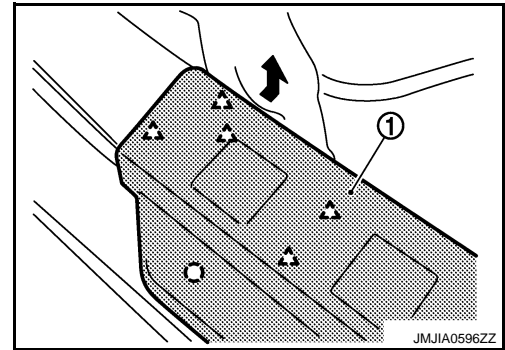


### FRONT KICKING PLATE

1. Pull upwards to disengage the pawls and clips from the body, dash side finisher and center pillar lower garnish.

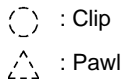


2. Remove front kicking plate inner (1).

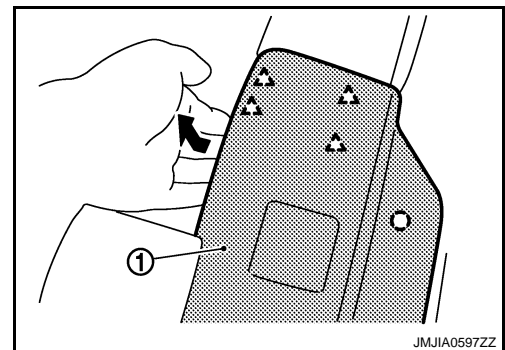


### REAR KICKING PLATE

1. Pull upwards to disengage the pawls and clips from the body, center pillar lower garnish and luggage side lower finisher.



2. Remove rear kicking plate inner (1).



### CENTER PILLAR LOWER GARNISH


1. Remove front kicking plate and rear kicking plate.

A  
B  
C  
D  
E  
F  
G  
H  
I  
INT  
K  
L  
M  
N  
O  
P

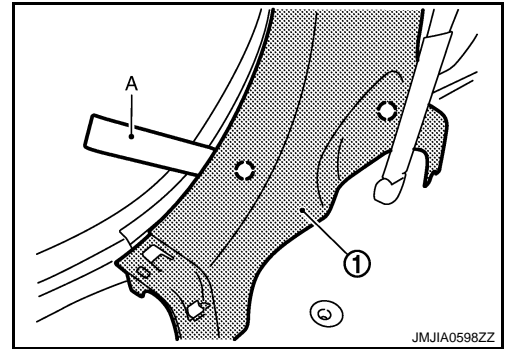
## BODY SIDE TRIM

### < ON-VEHICLE REPAIR >

2. Insert remover tool (A) between center pillar lower garnish (1) and body side panel to disengage clips.


 : Clip

3. Remove center pillar lower garnish (1).

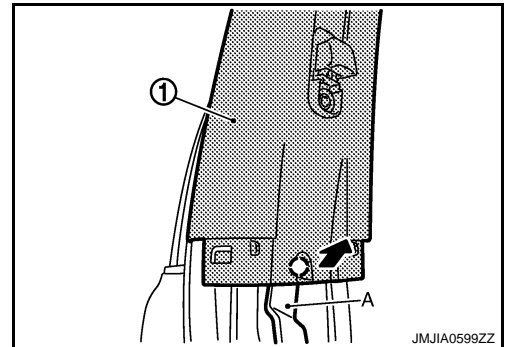


### CENTER PILLAR UPPER GARNISH

1. Remove front kicking plate and rear kicking plate.
2. Remove center pillar lower garnish.
3. Remove front seat belt anchor bolt. Refer to [SB-5. "SEAT BELT RETRACTOR : Removal and Installation"](#).
4. Disengage center pillar upper garnish (1) mounting clip using remover tool (A).

 : Clip

5. Disengage center pillar upper garnish (1) mounting metal clip, and then remove center pillar upper garnish (1).



### INSTALLATION

Install in the reverse order of removal.

#### **CAUTION:**

**When installing body side trim, check that clips are securely fitted in panel holes on body, and then press them in.**

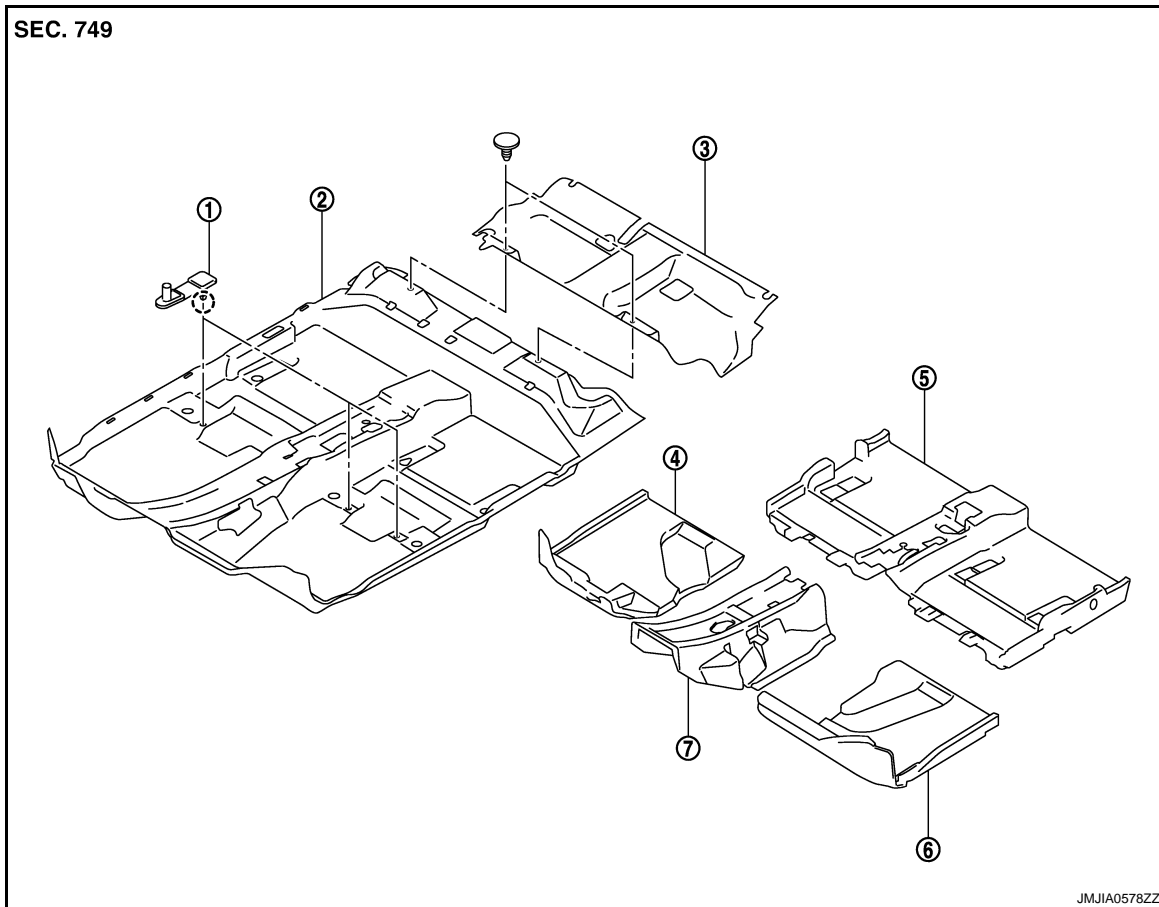
# FLOOR TRIM

< ON-VEHICLE REPAIR >

## FLOOR TRIM

Exploded View

INFOID:000000001160466



- |                                 |                          |                               |
|---------------------------------|--------------------------|-------------------------------|
| 1. Floor hook                   | 2. Floor carpet assembly | 3. Rear floor carpet assembly |
| 4. Floor side spacer RH         | 5. Rear floor spacer     | 6. Floor side spacer LH       |
| 7. Front floor center insulator |                          |                               |

○ : Clip

## Removal and Installation

INFOID:000000001160467


### REMOVAL

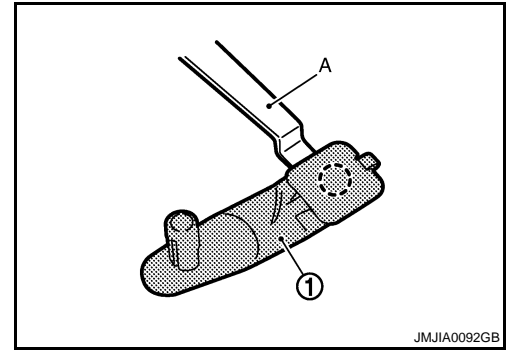
1. Remove front seat assembly (LH/RH) and rear seat cushion assembly.
  - Front seat assembly. Refer to [SE-36, "Removal and Installation"](#).
  - Rear seat cushion assembly. Refer to [SE-47, "Removal and Installation"](#).
2. Remove dash side finisher (LH/RH), front kicking plate (LH/RH), center pillar lower garnish (LH/RH), and rear kicking plate. Refer to [INT-16, "Removal and Installation"](#).
3. Remove center console assembly. Refer to [IP-21, "Removal and Installation"](#).

# FLOOR TRIM

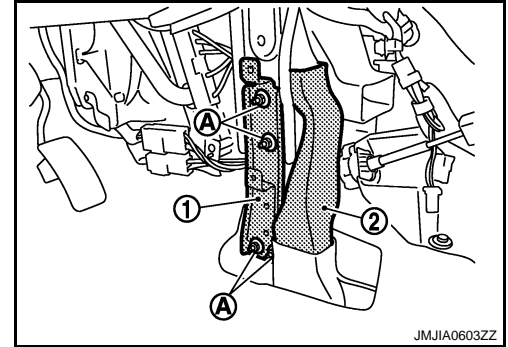
## < ON-VEHICLE REPAIR >

4. Remove carpet hooks (1) with remover tool (A).

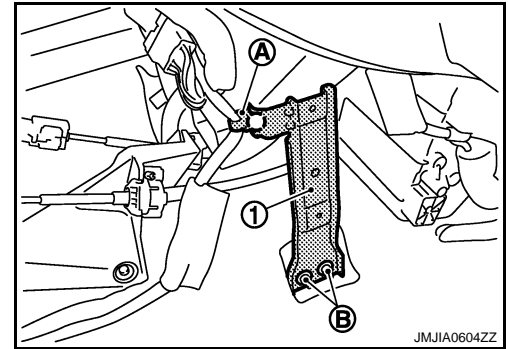
 : Clip



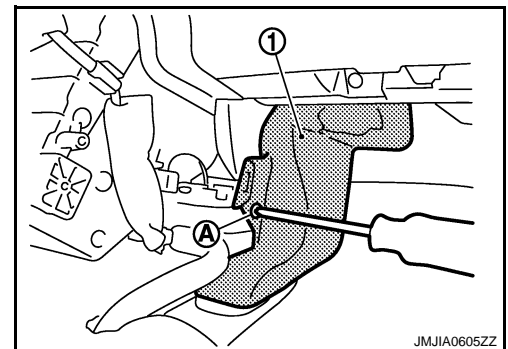
5. Remove console bracket mounting nuts (A), and then remove console bracket LH (1).  
6. Remove foot duct LH (2).  
Refer to [VTL-43, "FOOT DUCTS : Exploded View"](#).



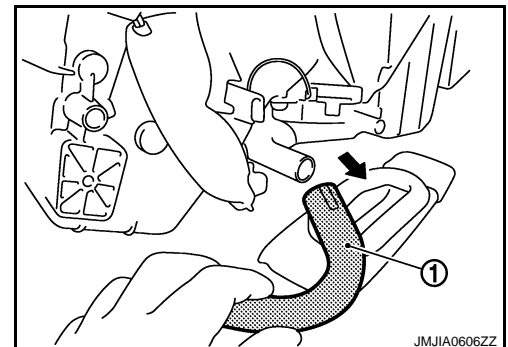
7. Remove floor harness clip (A).  
8. Remove console bracket mounting nuts (B), and then remove console bracket RH (1).



9. Remove screw (A), and then remove foot duct RH (1).  
Refer to [VTL-43, "FOOT DUCTS : Exploded View"](#).



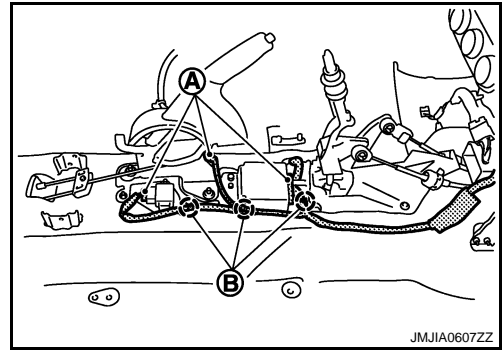
10. Disconnect drain hose (1) joint.



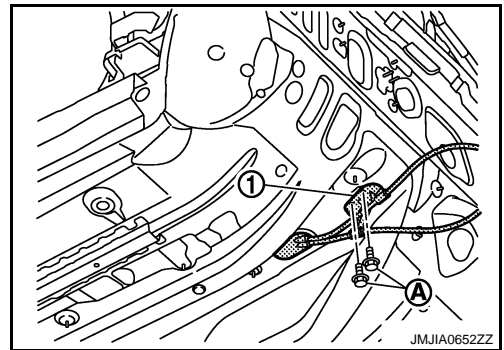
# FLOOR TRIM

## < ON-VEHICLE REPAIR >

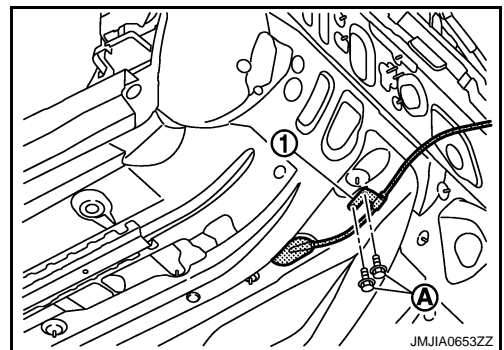
11. Disconnect harness connectors (A).  
Remove floor harness mounting clips (B).



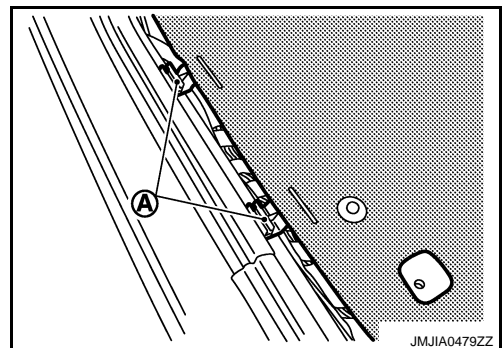
12. Remove AT control device assembly. (AT models)  
Refer to [TM-341, "Removal and Installation"](#).
13. Remove MT control linkage assembly. (MT models)  
Refer to [TM-79, "Removal and Installation"](#).
14. Remove CVT control device assembly. (CVT models)  
Refer to [TM-515, "SPORT MODE : Removal and Installation"](#).
15. Remove parking brake control device assembly. Refer to [PB-5, "Removal and Installation"](#).
16. Remove diagnosis sensor unit. Refer to [SR-19, "Removal and Installation"](#).
17. Remove select and shift cable bracket (1) mounting bolts (A).  
(MT models)  
Refer to [TM-21, "Exploded View"](#).



18. Remove control cable bracket (1) mounting bolts (A).  
(AT/CVT models)  
Refer to [TM-515, "SPORT MODE : Exploded View"](#).



19. Remove floor carpet from fixing clips (A), and then remove floor carpet.



## INSTALLATION

Install in the reverse order of removal.

A  
B  
C  
D  
E  
F  
G  
H  
I  
INT  
K  
L  
M  
N  
O  
P

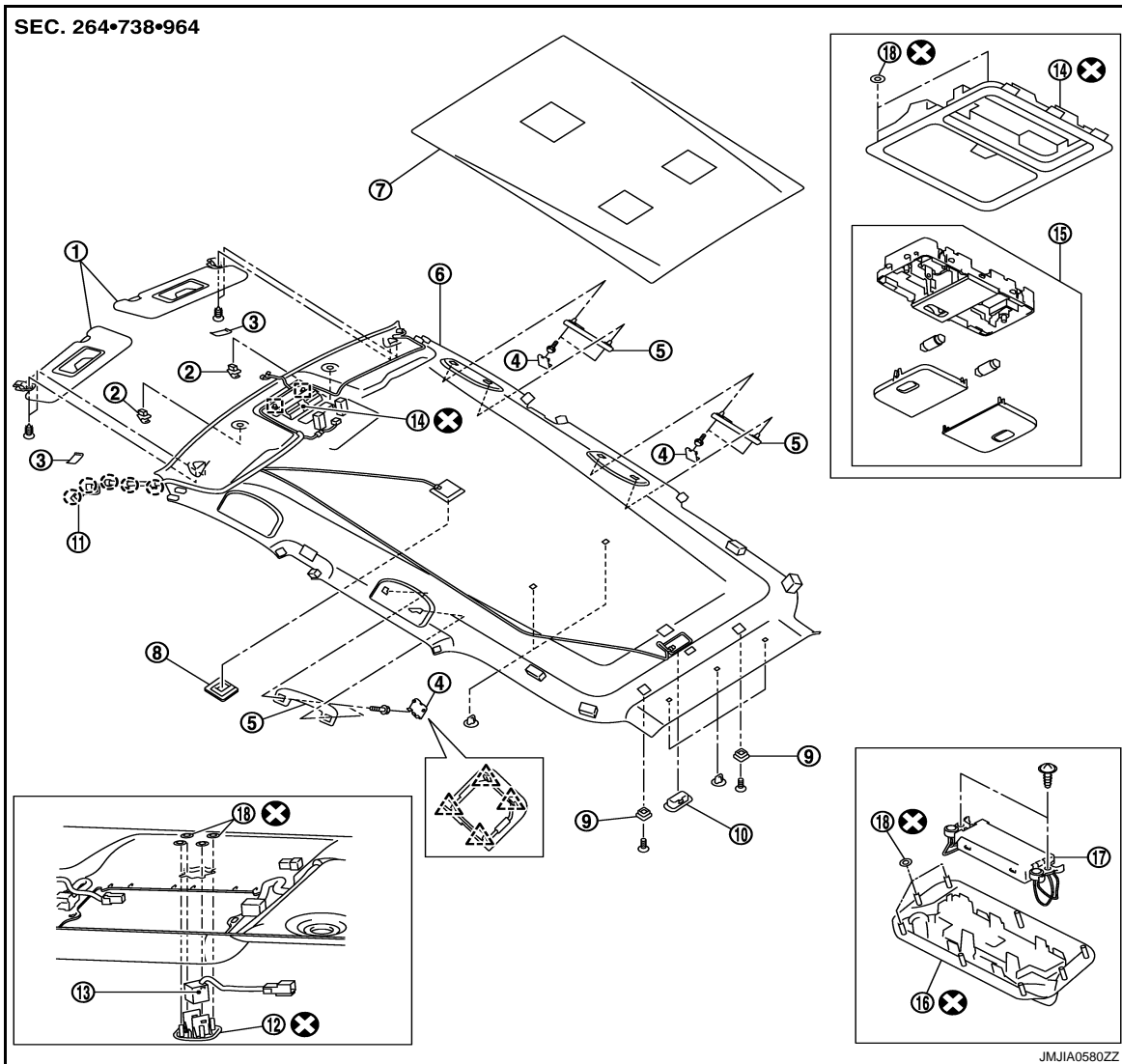
# HEADLINING

< ON-VEHICLE REPAIR >

## HEADLINING NORMAL ROOF

### NORMAL ROOF : Exploded View

INFOID:000000001365747



- |                                   |                             |                         |
|-----------------------------------|-----------------------------|-------------------------|
| 1. Sun-visor                      | 2. Sun-visor holder         | 3. Sun-visor cap        |
| 4. Assist grip cap                | 5. Assist grip              | 6. Headlining assembly  |
| 7. Roof insulator                 | 8. Room lamp                | 9. Rope hook            |
| 10. Luggage room lamp             | 11. Roof harness            | 12. Microphone finisher |
| 13. Microphone                    | 14. Sunglasses holder       | 15. Map lamp assembly   |
| 16. Ultra sonic sensor unit cover | 17. Ultra sonic sensor unit | 18. Push on nut         |

○ : Clip

△ : Pawl

□ : Metal clip

### NORMAL ROOF : Removal and Installation

INFOID:000000001160469


#### REMOVAL

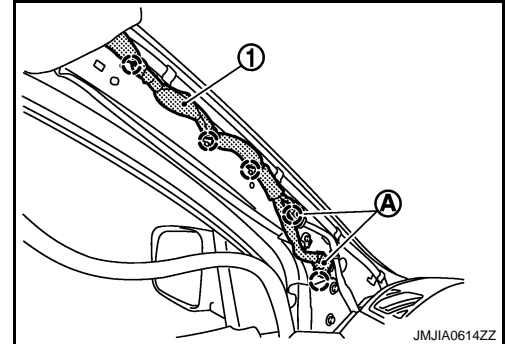
1. Remove rear seat cushion and seat back. Refer to [SE-47, "Removal and Installation"](#).
2. Remove rear seat belt anchor bolt (LH/RH). Refer to [SB-10, "SEAT BELT RETRACTOR : Exploded View"](#).

# HEADLINING

## < ON-VEHICLE REPAIR >

3. Remove front seat belt anchor bolt (LH/RH). Refer to [SB-5. "SEAT BELT RETRACTOR : Exploded View"](#).
4. Remove luggage side lower finisher (LH/RH), luggage side upper finisher (LH/RH). Refer to [INT-28. "Removal and Installation"](#).
5. Remove front pillar garnish (LH/RH), front kicking plate (LH/RH), center pillar lower garnish (LH/RH), center pillar upper garnish (LH/RH), front body side welt (LH/RH), rear body side welt (LH/RH), rear kicking plate (LH/RH). Refer to [INT-16. "Removal and Installation"](#).
6. Disconnect roof harness connectors.
7. Remove harness clips (A) of roof harness (1).

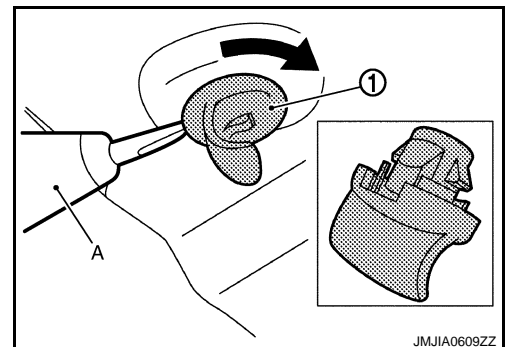
 : Clip



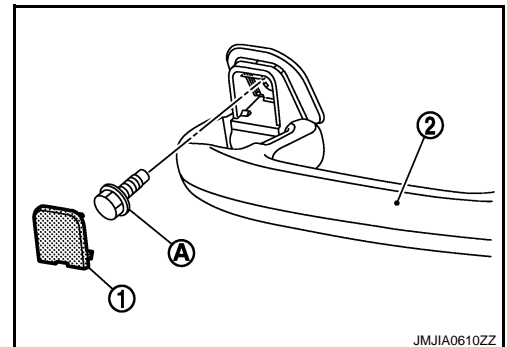
8. Remove sun-visor (LH/RH).
  - Remove sun-visor cover.
  - Remove mounting screws.
  - Disconnect vanity mirror lamp harness connector. (with Vanity mirror lamp)
9. Remove sun-visor holder (LH/RH).

### NOTE:

Insert flat bladed screw driver (A) to edge, and turn it 90 degrees and remove sun-visor holder (1).



10. Remove front assist grip (RH) and rear assist grip (LH/RH).
  - Remove assist grip cap (1).
  - Remove assist grip mounting bolts (A).
  - Pull back assist grip (2).




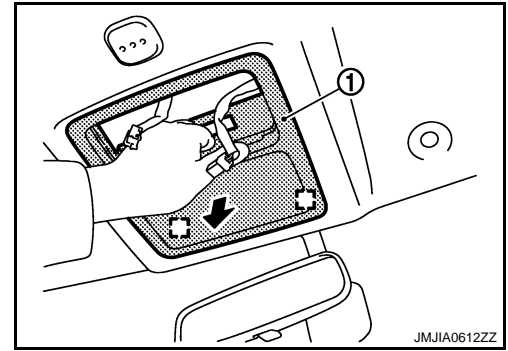
11. Recline front seat back to facilitate the headlining removal.
12. Remove map lamp assembly. Refer to [INL-75. "Removal and Installation"](#).
13. Remove room lamp assembly. Refer to [INL-77. "Removal and Installation"](#).

# HEADLINING

## < ON-VEHICLE REPAIR >

14. Pull sunglasses holder (1) toward vehicle lower, and disengage metal clips.

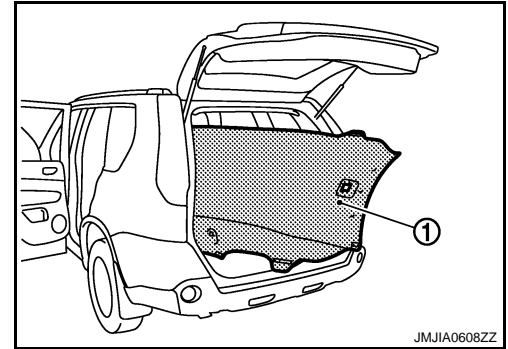
 : Metal clip



15. Remove screws, and then remove rope hooks (LH/RH).  
16. Using remover tool, remove body side headlining clip at the rear side of headlining.  
17. Remove headlining (1) from back door.

### CAUTION:

- When removing, 2 workers are required. (1 for each front and rear of headlining)
- Do not bend headlining when removing.
- Be careful not to scratch or damage any part of the body while taking out the headlining.



18. Remove the following parts after removing headlining.
- Luggage room lamp assembly. Refer to [INL-79. "ROOF SIDE : Removal and Installation"](#).
  - Ultra sonic sensor. Refer to [SEC-229. "Removal and Installation"](#).
  - Microphone. (with NAVIGATION) Refer to [AV-263. "Removal and Installation"](#).
  - Roof harness assembly.
  - Roof insulator.

## INSTALLATION

Install in the reverse order of removal.

### CAUTION:

- As for guide, install sun-visor holder (LH/RH) then both body side mounting headlining clips at the rear side of headlining.
- Do not bend headlining when installing.

## SUNROOF

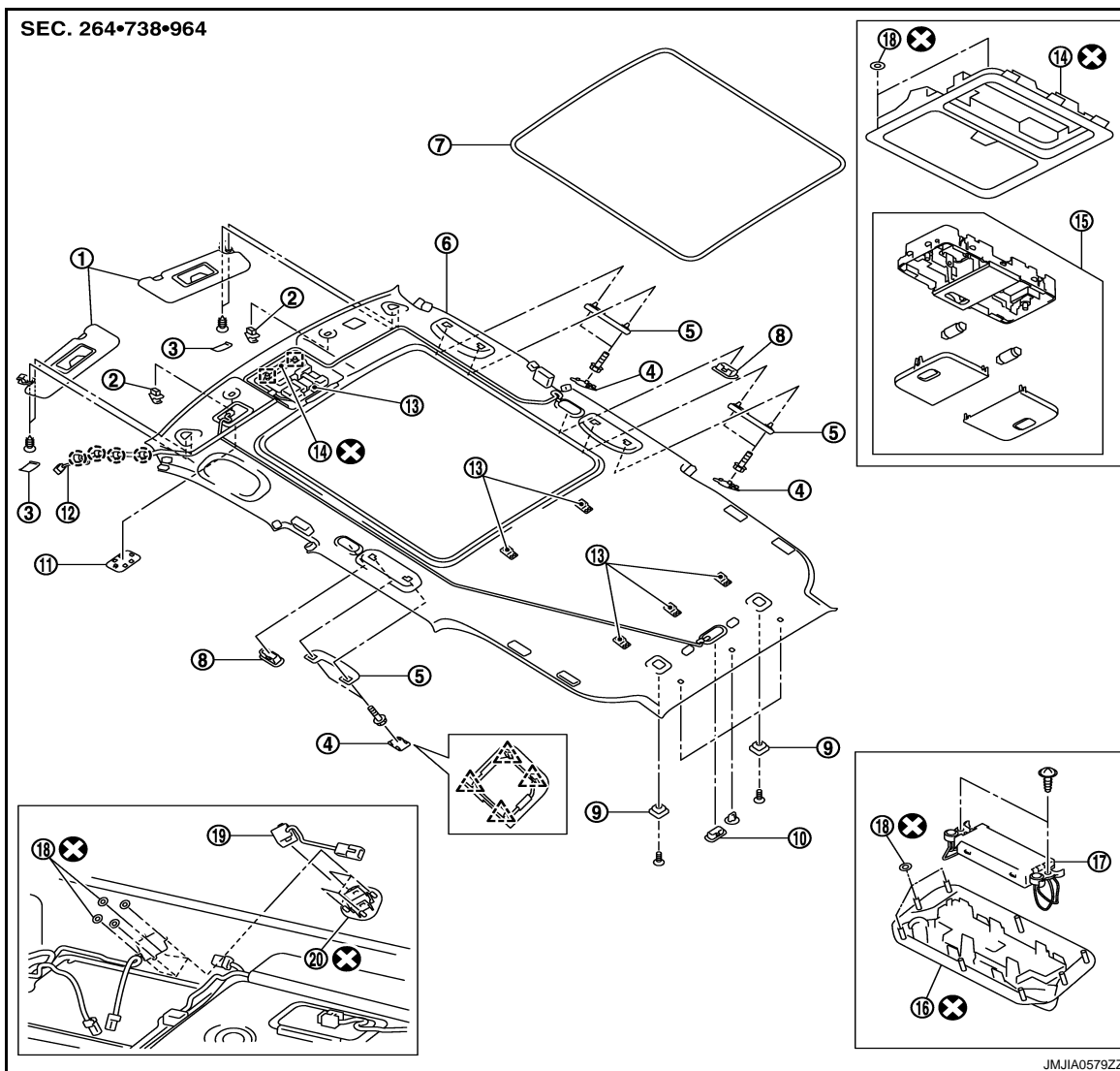


# HEADLINING


< ON-VEHICLE REPAIR >


## SUNROOF : Exploded View

INFOID:000000001160468



- |                                   |                             |                        |
|-----------------------------------|-----------------------------|------------------------|
| 1. Sun-visor                      | 2. Sun-visor holder         | 3. Sun-visor cap       |
| 4. Assist grip pad                | 5. Assist grip              | 6. Headlining assembly |
| 7. Sunroof welt                   | 8. Personal lamp            | 9. Rope hook           |
| 10. Luggage room lamp             | 11. Roof finisher           | 12. Roof harness       |
| 13. Dual lock fastener            | 14. Sunglasses holder       | 15. Map lamp assembly  |
| 16. Ultra sonic sensor unit cover | 17. Ultra sonic sensor unit | 18. Push on nut        |
| 19. Microphone                    | 20. Microphone finisher     |                        |

 : Clip

 : Pawl

 : Metal clip

## SUNROOF : Removal and Installation

INFOID:000000001375047

### REMOVAL


1. Remove rear seat cushion and seat back. Refer to [SE-47, "Removal and Installation"](#).
2. Remove rear seat belt anchor bolt (LH/RH). Refer to [SB-10, "SEAT BELT RETRACTOR : Exploded View"](#).
3. Remove front seat belt anchor bolt (LH/RH). Refer to [SB-5, "SEAT BELT RETRACTOR : Exploded View"](#).

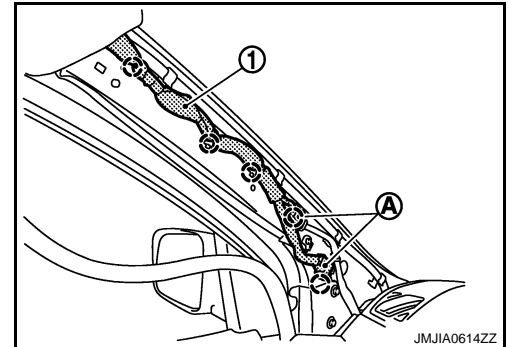
A  
B  
C  
D  
E  
F  
G  
H  
I  
INT  
K  
L  
M  
N  
O  
P

# HEADLINING

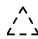
## < ON-VEHICLE REPAIR >

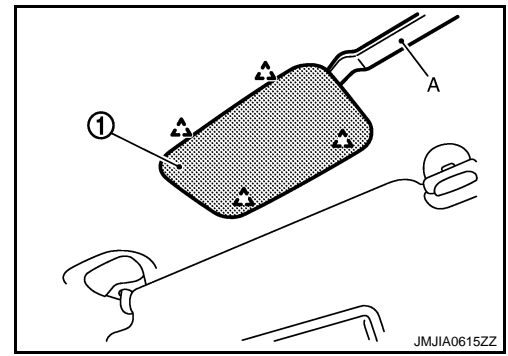
4. Remove luggage side lower finisher (LH/RH), luggage side upper finisher (LH/RH). Refer to [INT-28, "Removal and Installation"](#).
5. Remove front pillar garnish (LH/RH), front kicking plate (LH/RH), center pillar lower garnish (LH/RH), center pillar upper garnish (LH/RH), front body side welt (LH/RH), rear body side welt (LH/RH), rear kicking plate (LH/RH). Refer to [INT-16, "Removal and Installation"](#).
6. Disconnect roof harness connectors.
7. Remove harness clips (A) of roof harness (1).

 : Clip

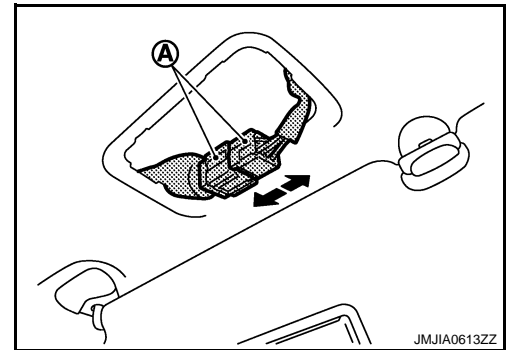


8. Remove roof finisher (1) with remover tool (A).

 : Pawl



9. Disconnect roof harness connector (A).

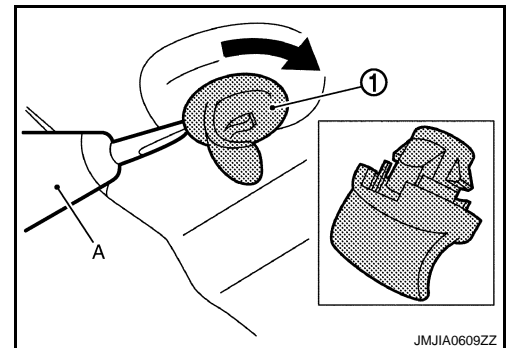


10. Remove sun-visor (LH/RH).
  - Remove sun-visor cover.
  - Remove mounting screws.
  - Disconnect vanity mirror lamp harness connector. (with Vanity mirror lamp)

11. Remove sun-visor holder (LH/RH).

### NOTE:

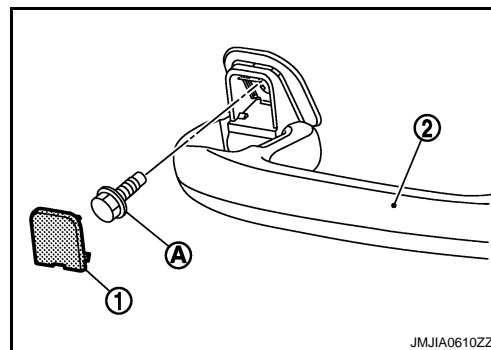
Insert flat bladed screw driver (A) to edge, and turn it 90 degrees and remove sun-visor holder (1).



# HEADLINING

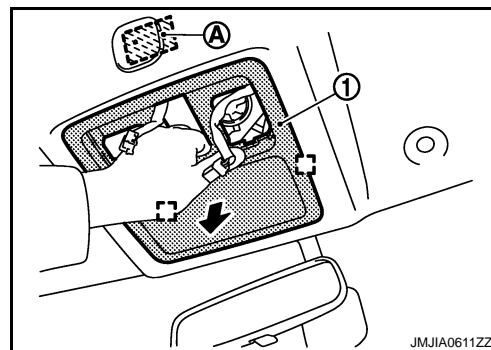
## < ON-VEHICLE REPAIR >

12. Remove front assist grip (RH) and rear assist grip (LH/RH).
  - Remove assist grip cap (1).
  - Remove assist grip mounting bolts (A).
  - Pull back assist grip (2).



13. Recline front seat back to facilitate the headlining removal.
14. Remove map lamp assembly. Refer to [INL-75, "Removal and Installation"](#).
15. Pull sunglasses holder (1) toward vehicle lower, and disengage dual-lock fastener (A) and metal clips.

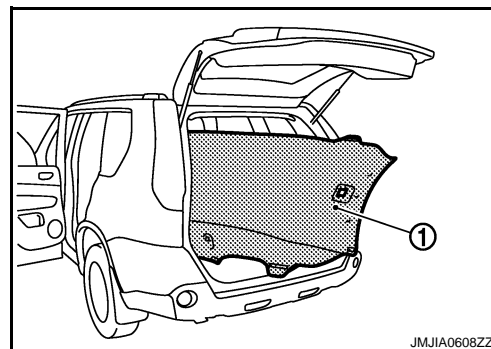
 : Metal clip



16. Remove screws, and then remove rope hooks (LH/RH).
17. Using remover tool, remove body side headlining clips at the rear side of headlining.
18. Remove headlining (1) from back door.

### CAUTION:

- When removing, 2 workers are required. (1 for each front and rear of headlining)
- Do not bend headlining when removing.
- Be careful not to scratch or damage any part of the body while taking out the headlining.



19. Remove the following parts after removing headlining.
  - Luggage room lamp assembly. Refer to [INL-79, "ROOF SIDE : Removal and Installation"](#).
  - Personal lamp assembly. Refer to [INL-79, "ROOF SIDE : Removal and Installation"](#).
  - Ultra sonic sensor. Refer to [SEC-229, "Removal and Installation"](#).
  - Microphone. (with NAVIGATION) Refer to [AV-263, "Removal and Installation"](#).
  - Roof harness assembly.

## INSTALLATION

Install in the reverse order of removal.

### CAUTION:

- As for guide, install sun-visor holder (LH/RH) then both body side mounting headlining clips at the rear side of headlining.
- Do not bend headlining when installing.

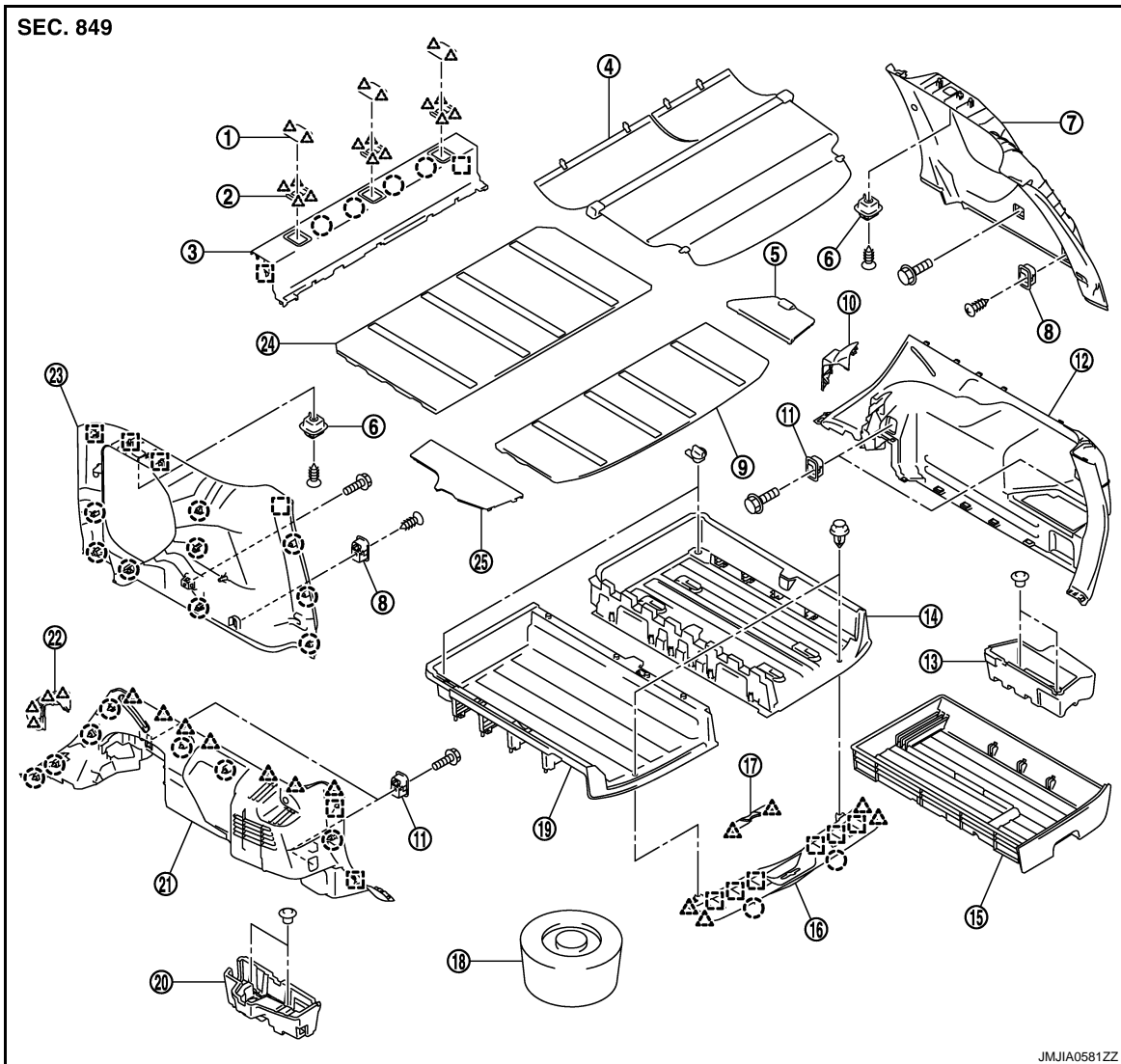
# LUGGAGE FLOOR TRIM

< ON-VEHICLE REPAIR >

## LUGGAGE FLOOR TRIM

Exploded View

INFOID:000000001160470



- |                                   |                                    |  |
|-----------------------------------|------------------------------------|--|
| 1. Child anchor cover             | 2. Child anchor cover base         | 3. Luggage floor center finisher       |
| 4. Tonneau cover assembly         | 5. Luggage floor side board RH     | 6. Cargo hook                          |
| 7. Luggage side upper finisher RH | 8. Luggage hook                    | 9. Luggage floor center board (rear)   |
| 10. Luggage finisher mask RH      | 11. Rope hook                      | 12. Luggage side lower finisher RH     |
| 13. Luggage side box assembly RH  | 14. Luggage floor spacer RH        | 15. Luggage floor box                  |
| 16. Luggage rear plate            | 17. Luggage rear plate mask        | 18. Spare tire cover                   |
| 19. Luggage floor spacer LH       | 20. Luggage side box assembly LH   | 21. Luggage side lower finisher LH     |
| 22. Luggage finisher mask LH      | 23. Luggage side upper finisher LH | 24. Luggage floor center board (front) |
| 25. Luggage floor side board LH   |                                    |  |

○ : Clip

△ : Pawl

□ : Metal clip

## Removal and Installation

INFOID:000000001160471


### REMOVAL

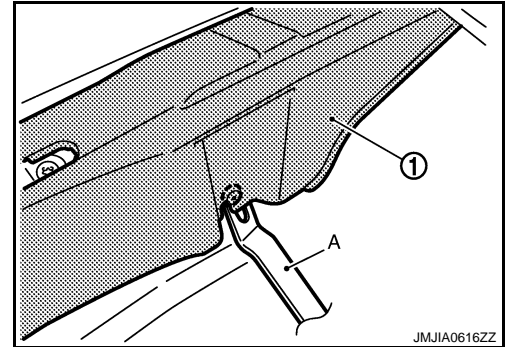
# LUGGAGE FLOOR TRIM

## < ON-VEHICLE REPAIR >

### LUGGAGE REAR PLATE

1. Fully open back door.
2. Remove tonneau cover assembly.
3. Remove luggage floor center board (front/rear).
4. Remove luggage floor box.
5. Remove luggage floor spacer (LH/RH).
6. Remove back door weather strip. Refer to [DLK-277, "BACK DOOR WEATHER-STRIP : Removal and Installation"](#).
7. Remove luggage rear plate mask with remover tool.
8. Remove luggage rear plate (1) fixing clips with remover tool (A).

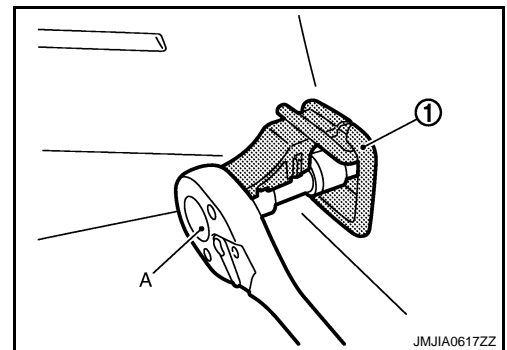
 : Clip



9. Hold both sides of luggage rear plate, pull upwards to remove.

### LUGGAGE SIDE LOWER FINISHER

1. Remove tonneau cover assembly.
2. Remove rear body side welt. Refer to [INT-16, "Removal and Installation"](#).
3. Remove rear seat back and rear seat cushion. Refer to [SE-47, "Removal and Installation"](#).
4. Remove luggage rear plate.
5. Remove luggage floor center board (front/rear).
6. Remove luggage floor box.
7. Remove luggage side box assembly.
8. Remove luggage floor side board.
9. Remove luggage floor center finisher.
10. Remove rope hook mounting bolts with socket wrench (A), and then remove rope hooks (1).



11. Remove rear seat belt anchor bolt (lower). Refer to [SB-10, "SEAT BELT RETRACTOR : Exploded View"](#).
12. Remove luggage side lower finisher fixing clips and metal clips with remover tool.
13. Disconnect power socket harness connector.
14. Remove luggage side lower finisher.

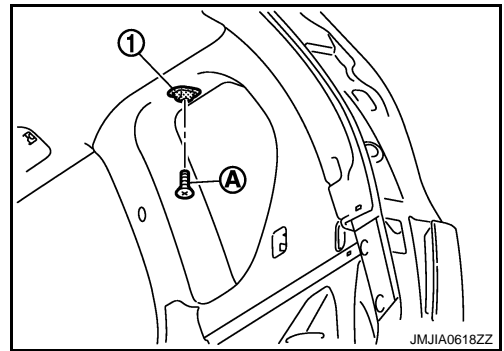
### LUGGAGE SIDE UPPER FINISHER

1. Remove luggage side lower finisher. Refer to [INT-28, "Removal and Installation"](#).

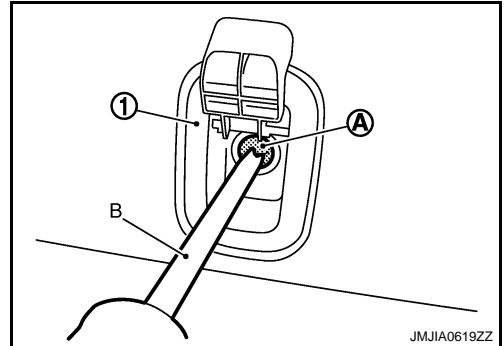
## LUGGAGE FLOOR TRIM

### < ON-VEHICLE REPAIR >

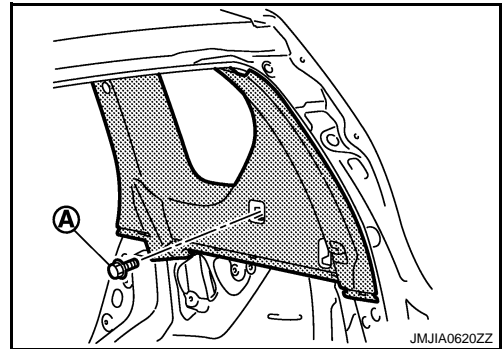
2. Remove cargo hook mounting screw (A) with screw driver, and then remove cargo hooks (1).



3. Remove luggage hook mounting screw (A) with screw driver (B), and then remove luggage hooks (1).



4. Remove luggage side upper finisher mounting bolt (A).



5. Remove rear seat belt anchor bolt (upper). Refer to [SB-10, "SEAT BELT RETRACTOR : Exploded View"](#).
6. Remove luggage side upper finisher fixing clips and metal clips with remover tool.
7. Remove luggage side upper finisher.

### INSTALLATION

Install in the reverse order of removal.

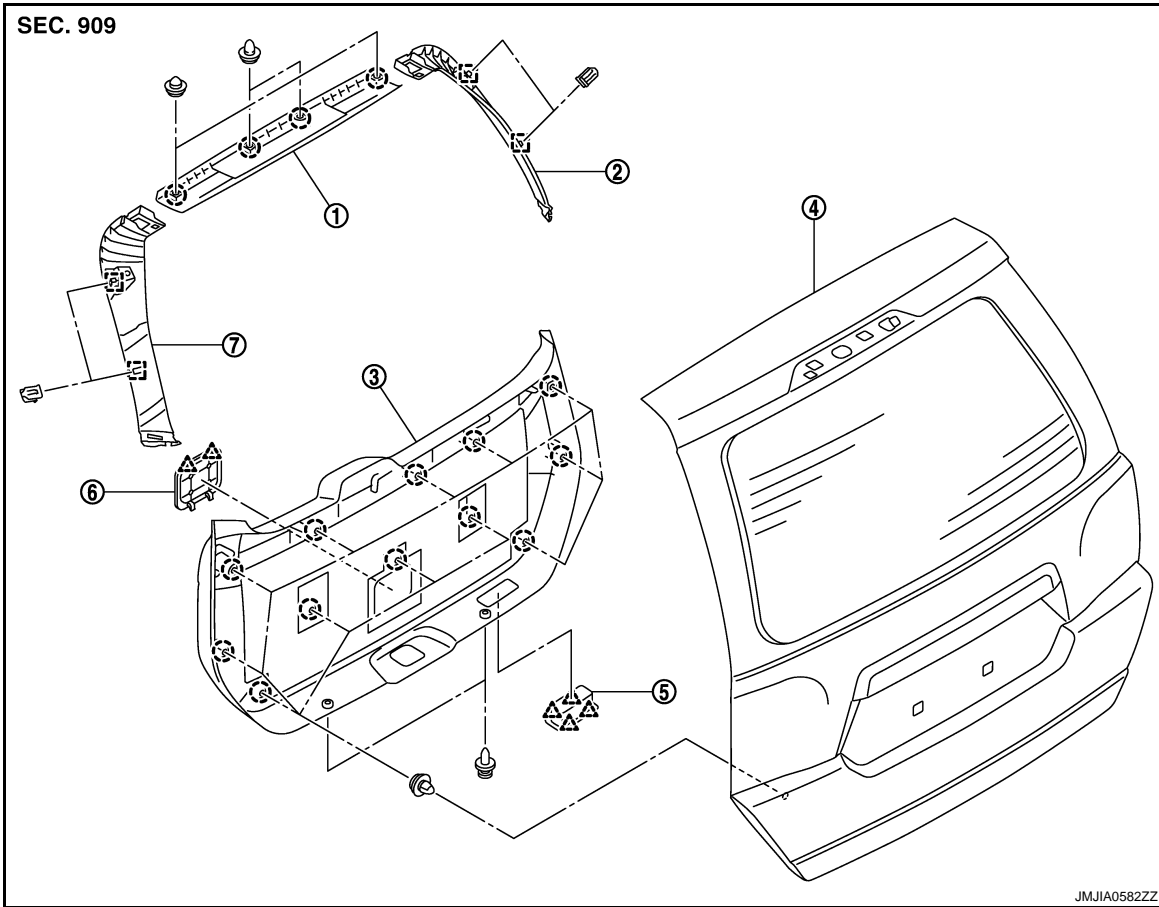
# BACK DOOR TRIM

< ON-VEHICLE REPAIR >

## BACK DOOR TRIM

Exploded View

INFOID:000000001160472



- |                                     |                                     |                                   |
|-------------------------------------|-------------------------------------|-----------------------------------|
| 1. Back door upper finisher inner   | 2. Back door side finisher inner RH | 3. Back door lower finisher inner |
| 4. Back door assembly               | 5. Pull handle                      | 6. Back door mask                 |
| 7. Back door side finisher inner LH |                                     |                                   |

○ : Clip

△ : Pawl

□ : Metal clip

### Removal and Installation

INFOID:000000001160473

#### REMOVAL

##### BACK DOOR LOWER FINISHER INNER

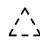
1. Fully open back door.

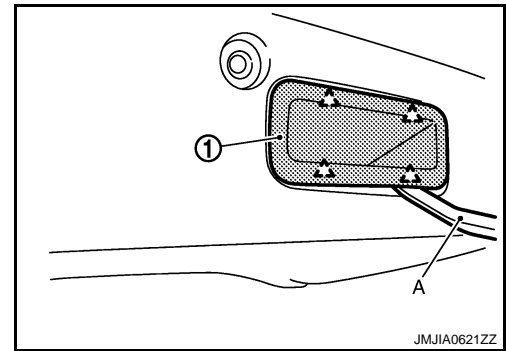
A  
B  
C  
D  
E  
F  
G  
H  
I  
INT  
K  
L  
M  
N  
O  
P

## BACK DOOR TRIM

### < ON-VEHICLE REPAIR >

2. Disengage pull handle (1) fixing pawls with remover tool (A).


 : Pawl

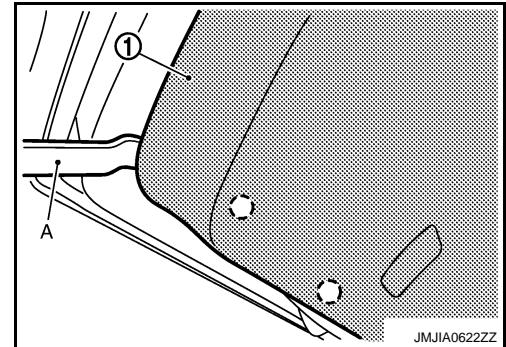


3. Insert remover tool (A) between back door lower finisher inner (1) and back door panel to disengage clips.

**NOTE:**

Starting by the lower downwards and works around the edges and up to the sides.


 : Clip

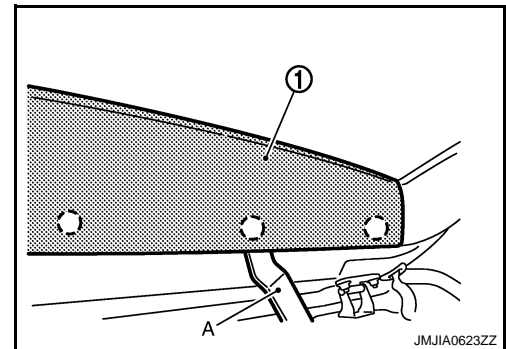


4. Pull out back door lower finisher inner toward vehicle inside, and disconnect luggage room lamp connector.
5. Remove back door lower finisher inner.
6. Remove the following parts after removing back door lower finisher inner.
  - Luggage room lamp assembly. Refer to [INL-80, "BACK DOOR SIDE : Removal and Installation"](#).
  - Back door mask.

### BACK DOOR UPPER FINISHER INNER

1. Fully open back door.
2. Remove back door lower finisher inner.
3. Insert remover tool (A) between back door upper finisher inner (1) and back door panel to disengage clips.

 : Clip



4. Remove back door upper finisher inner.

### BACK DOOR SIDE FINISHER INNER

1. Fully open back door.
2. Remove back door lower finisher inner.
3. Remove back door upper finisher inner.

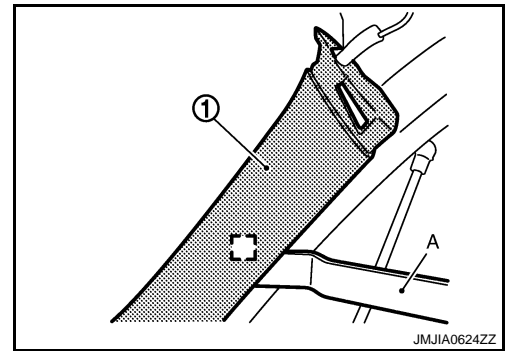


## BACK DOOR TRIM

### < ON-VEHICLE REPAIR >

4. Insert remover tool (A) between back door side finisher inner (1) and back door panel to disengage metal clips.

 : Metal clip



5. Remove back door side finisher inner.

### INSTALLATION

Install in the reverse order of removal.

#### **CAUTION:**

**When installing back door trim, check that clips are securely fitted in panel holes on body, and then press them in.**

A  
B  
C  
D  
E  
F  
G  
H  
I  
INT  
K  
L  
M  
N  
O  
P