

# ACCELERATOR CONTROL, FUEL & EXHAUST SYSTEMS

## SECTION FE

### CONTENTS

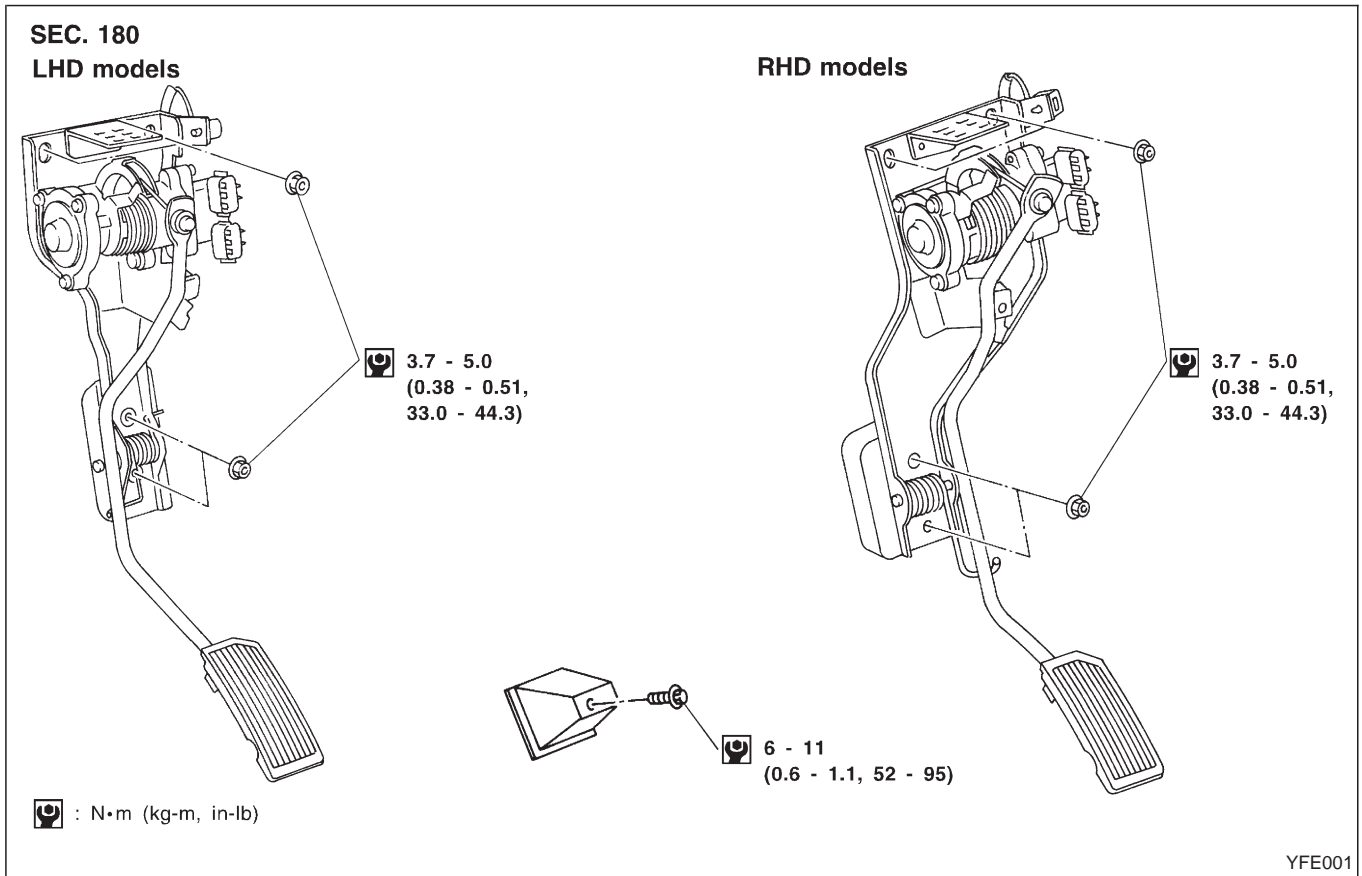
FE

<b>ACCELERATOR CONTROL SYSTEM</b> .....	1	<b>FUEL SYSTEM</b> .....	2
Accelerator Control System.....	1	<b>EXHAUST SYSTEM</b> .....	3

# ACCELERATOR CONTROL SYSTEM

## Accelerator Control System

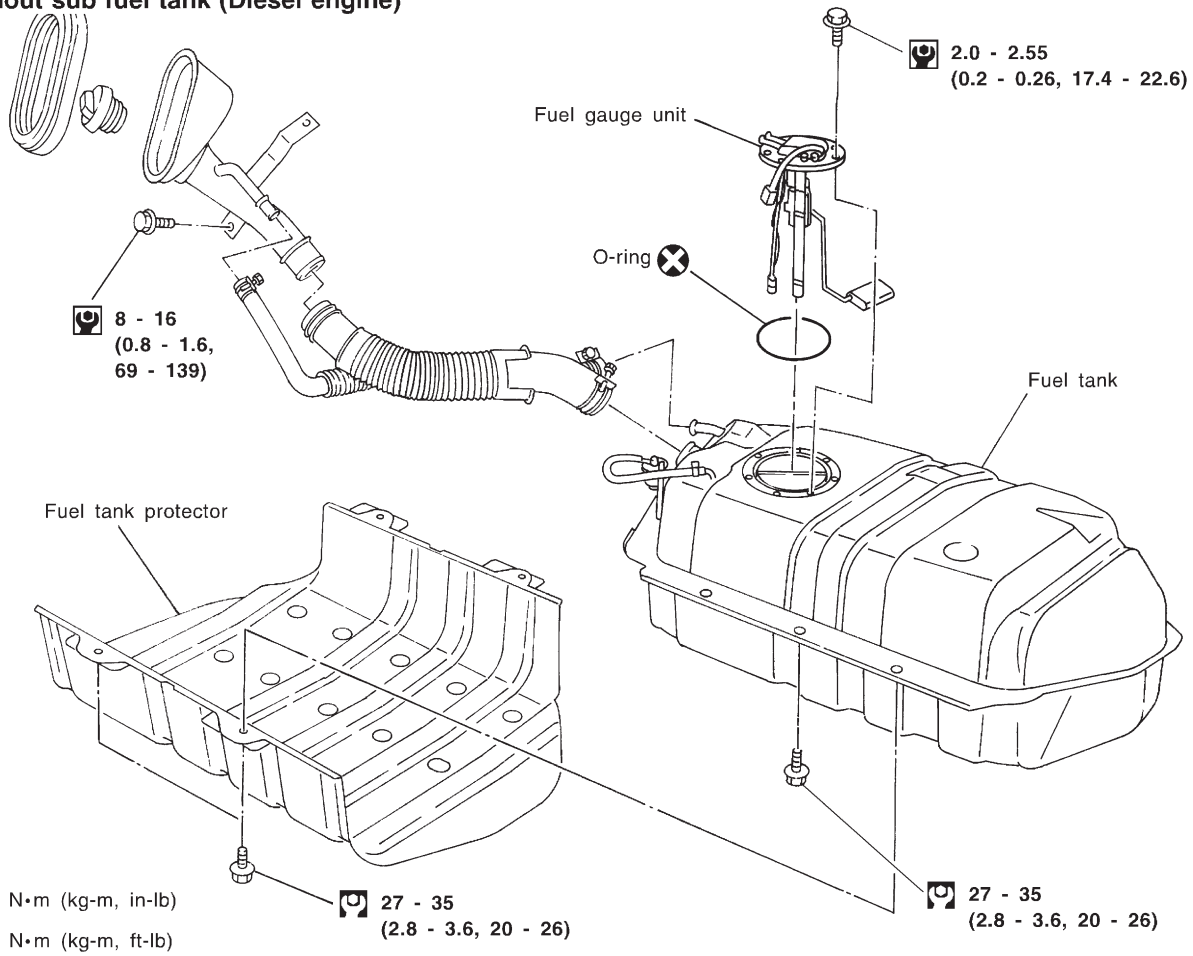
- Warm up engine to normal operating temperature.
- Check to see if throttle valve fully opens when accelerator pedal is fully depressed and if it returns to idle position when released.
- Adjust accelerator pedal free play by turning adjusting nut.
- Check accelerator control parts for improper contact with any adjacent parts.
- When connecting accelerator parts wire, be careful not to twist or scratch its inner wire.
- Apply a light coat of recommended multi-purpose grease to all sliding or friction surfaces. Do not apply grease to wire.



# FUEL SYSTEM

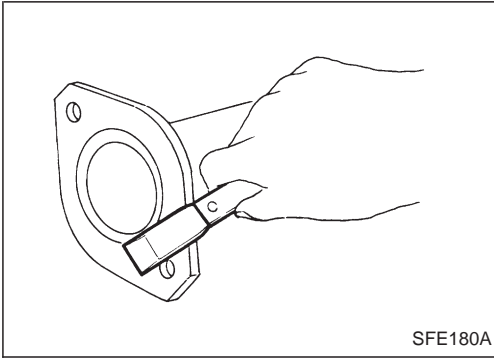
## SEC. 172

Without sub fuel tank (Diesel engine)



SFE514A

# EXHAUST SYSTEM

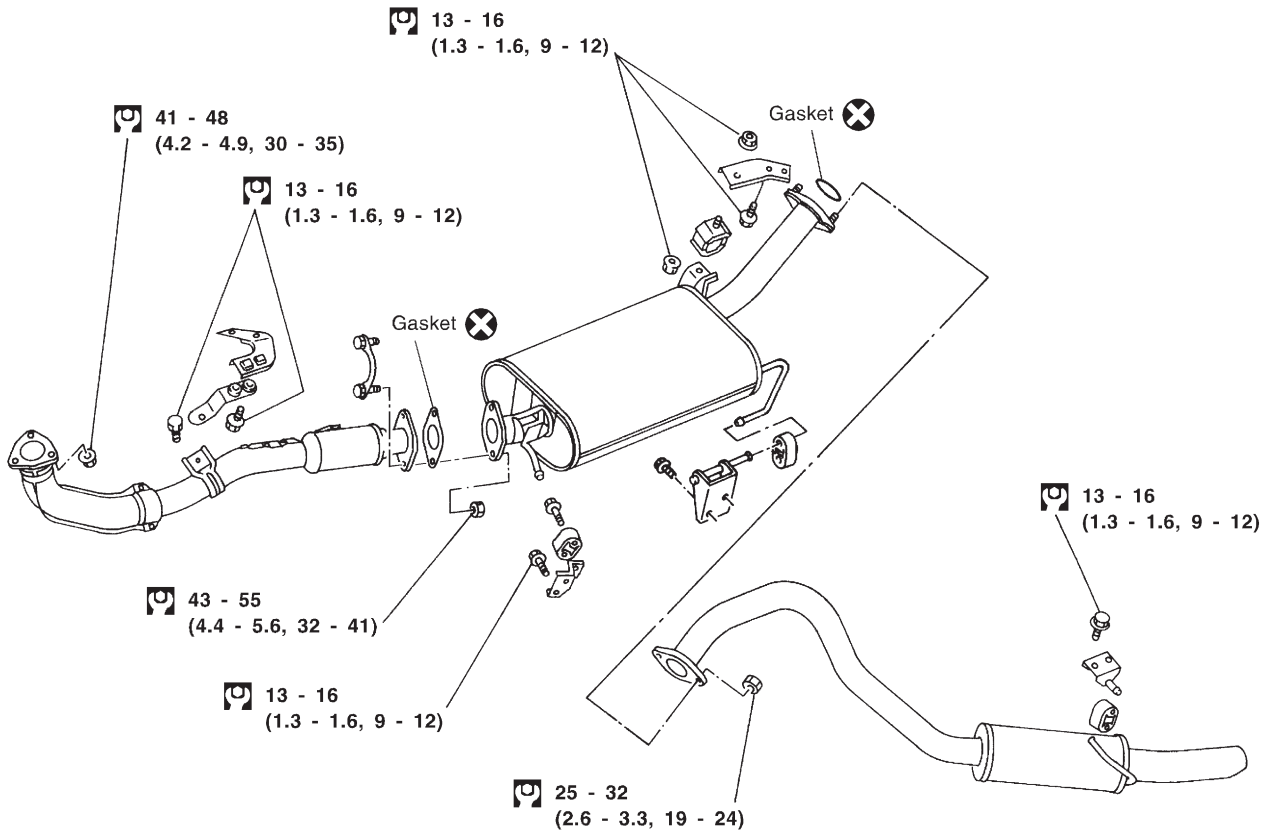
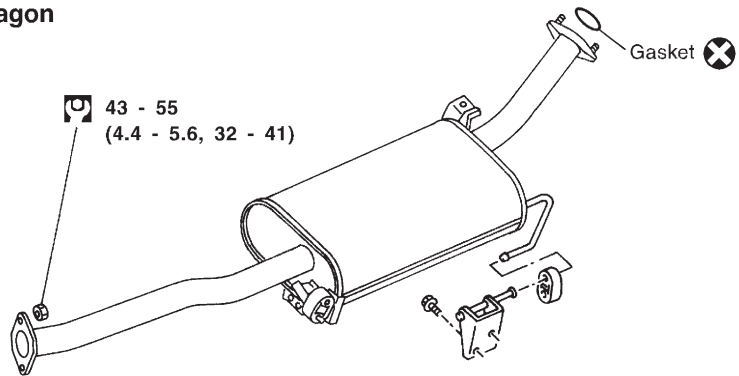


## CAUTION:

- Always replace exhaust gaskets with new ones when reassembling. If gasket is left on flange surface, scrape off completely as shown at left.
- With engine running, check all tube connections for exhaust gas leaks, and entire system for unusual noises.
- Ensure that mounting brackets and mounting insulators are installed properly and free from undue stress. Improper installation could result in excessive noise or vibration.

## SEC. 200 Hardtop with RD28ETi engine

### Wagon



: N·m (kg-m, ft-lb)

SFE516A