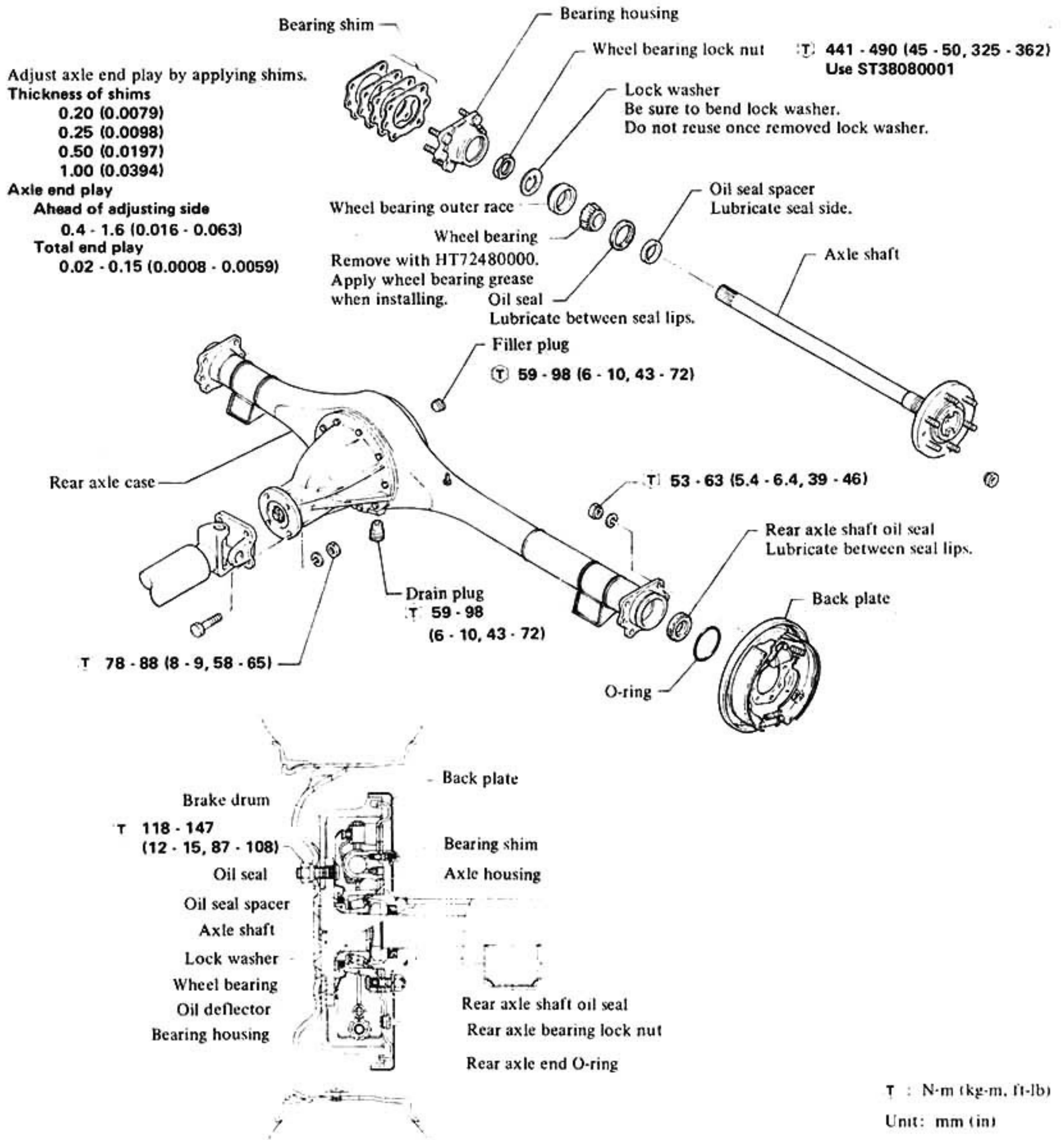


REAR AXLE & REAR SUSPENSION

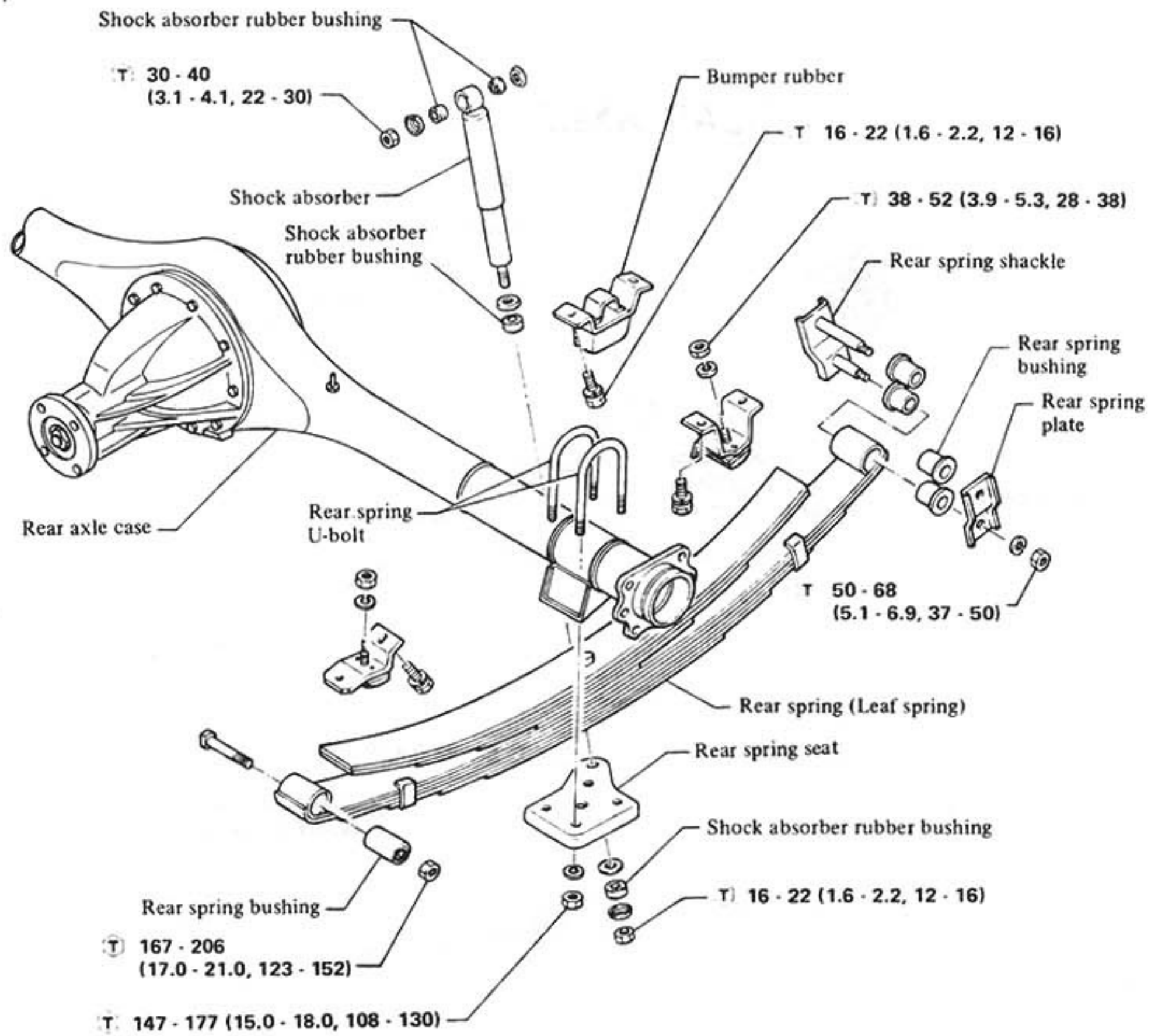
REAR AXLE



RA

REAR SUSPENSION

REAR SUSPENSION



T : N·m (kg·m, ft·lb)

SRA438

SERVICE DATA AND SPECIFICATIONS

GENERAL SPECIFICATIONS

Item	Destination	Europe				Australia				
		Hardtop	Wagon	Pick-up	Hardtop Wagon	[Option]	Hardtop	Van	Wagon	Pick-up
Vehicle model										
Engine		SD33 SD33T	SD33		L28		SD33 L28	SD33 SD33T L28		SD33
Suspension type		Parallel semi-elliptic leaf spring				Parallel semi-elliptic leaf spring				
Length x Width x Thickness --Number of leaves mm (in)	Main	1,420 x 60 x 11 (55.91 x 2.36 x 0.43) - 3	1,435 x 60 x 11 (56.50 x 2.36 x 0.43) - 3	1,420 x 60 x 10 (55.91 x 2.36 x 0.39) - 3	1,420 x 60 x 8 (55.91 x 2.36 x 0.31) - 6	1,420 x 60 x 10 (55.91 x 2.36 x 0.39) - 3				
	Helper	-	1,045 x 60 x 10 (41.14 x 2.36 x 0.39) - 2	-	-	1,045 x 60 x 10 (41.14 x 2.36 x 0.39) - 2				
Leaf spring										
Spring constant N/mm (kg/mm, lb/in)		47.2 (4.81, 269.4)	46.9 - 115.5 (4.78 - 11.78, 267.7 - 659.7)	46.6 (4.75, 266.0)	46.6 (4.75, 266.0)	46.9 - 115.5 (4.78 - 11.78, 267.7 - 659.7)				
Camber										
Free		173.3 (6.82)	199 (7.83)	172.5 (6.79)	172.5 (6.79)	199 (7.83)				199 (7.83)
Laden		46.5 (1.831)/ 5,982 (610, 1,345)	70 (2.76)/ 8,238 (840, 1,852)	44 (1.73)/ 5,982 (610, 1,345)	44 (1.73)/ 5,982 (610, 1,345)	70 (2.76)/8,238 (840, 1,852)				
Maximum length		489 (19.25)	519 (20.43)	499 (19.65)	499 (19.65)	519 (20.43)				519 (20.43)
Stroke		192 (7.56)	207 (8.15)	197 (7.76)	197 (7.76)	207 (8.15)				207 (8.15)
Shock absorber										
Damping force [0.3 m (1.0 ft)/sec] N (kg, lb)			1,059 (108, 238)			1,059 (108, 238)				1,059 (108, 238)
Expansion										
Compression			451 (46, 101)			451 (46, 101)				451 (46, 101)

SERVICE DATA AND SPECIFICATIONS

Item	Middle East				Except Europe, Australia and Middle East			
	Hardtop High roof	Van	Wagon	Pick-up	Wagon	Wagon	Pick-up	Wagon
Destination								
Vehicle model								
Engine	P L28	P	L28			P SD33 SD33T L28	P SD33 SD33T L28	L28
Suspension type	Parallel semi-elliptic leaf spring				Parallel semi-elliptic leaf spring			
Length x Width x Thickness — Number of leaves mm (in)	1,420 x 60 x 11 (55.91 x 2.36 x 0.43) — 3	1,435 x 60 x 8 (56.50 x 2.36 x 0.31) — 6	1,420 x 60 x 8 (55.91 x 2.36 x 0.31) — 6	1,435 x 60 x 8 (56.50 x 2.36 x 0.31) — 6	1,420 x 60 x 11 (55.91 x 2.36 x 0.43) — 3	1,420 x 60 x 11 (55.91 x 2.36 x 0.43) — 3	1,435 x 60 x 11 (56.50 x 2.36 x 0.43) — 3	1,420 x 60 x 11 (55.91 x 2.36 x 0.31) — 6
Helper	—	1,045 x 60 x 7 (41.14 x 2.36 x 0.28) — 4	—	1,045 x 60 x 7 (41.14 x 2.36 x 0.28) — 4	—	—	1,045 x 60 x 10 (41.14 x 2.36 x 0.39) — 2	—
Leaf spring								
Spring constant N/mm (kg/mm, lb/in)	47.2 (4.81, 269.4)	46.4 - 118.9 (4.73 - 12.12, 264.9 - 678.7)	46.6 (4.75, 266.0)	46.4 - 118.9 (4.73 - 12.12, 264.9 - 678.7)	47.2 (4.81, 269.4)	36.8 (3.75, 210.0)	46.9 - 115.5 (4.78 - 11.78, 267.7 - 659.7)	46.6 (4.75, 266.0)
Camber								
Free	173.3 (6.82)	215.7 (8.49)	172.5 (6.79)	215.7 (8.49)	173.3 (6.82)	187.6 (7.39)	199 (7.83)	172.5 (6.79)
Laden mm (in)/N (kg, lb)	46.5 (1.831) /5,982 (610, 1,345)	86 (3.39)/8,238 (840, 1,852)	44 (1.73) /5,982 (610, 1,345)	86 (3.39) /8,238 (840, 1,852)	46.5 (1.831) /5,982 (610, 1,345)	40 (1.57) /5,149 (525, 1,158)	70 (2.76) /8,238 (840, 1,852)	44 (1.73) /5,982 (610, 1,345)
Maximum length mm (in)	489 (19.25)	539 (21.22)	499 (19.65)	539 (21.22)	489 (19.25)	489 (19.25)	519 (20.43)	499 (19.65)
Stroke mm (in)	192 (7.56)	217 (8.54)	197 (7.76)	217 (8.54)	192 (7.56)	192 (7.56)	207 (8.15)	197 (7.76)
Shock absorber								
Damping force [0.3 m (1.0 ft) /sec] N (kg, lb)								
Expansion	1,059 (108, 238)				1,059 (108, 238)			
Compression	451 (46, 101)				451 (46, 101)			

SERVICE DATA AND SPECIFICATIONS

INSPECTION AND ADJUSTMENT

REAR AXLE

	Unit: mm (in)	
Total end play	0.02 - 0.15 (0.0008 - 0.0059)	
	Thickness	Part No.
	1.00 (0.0394)	43086-T0400
Bearing housing shim	0.50 (0.0197)	43087-T0400
	0.25 (0.0098)	43088-T0400
	0.20 (0.0079)	43089-T0400

TIGHTENING TORQUE

Item	N·m	kg-m	ft-lb
Wheel nut	118 - 147	12 - 15	87 - 108
Wheel bearing lock nut	441 - 490	45 - 50	325 - 362
Brake tube connector flare nut	15 - 18	1.5 - 1.8	11 - 13
Propeller shaft to companion flange	78 - 88	8 - 9	58 - 65
Drain plug	59 - 98	6 - 10	43 - 72
Filler plug	59 - 98	6 - 10	43 - 72
Shock absorber			
Shock absorber upper end nut	30 - 40	3.1 - 4.1	22 - 30
Shock absorber lower end nut	16 - 22	1.6 - 2.2	12 - 16
Bound bumper			
Bound bumper to body	16 - 22	1.6 - 2.2	12 - 16
Leaf spring			
U-bolt nut	147 - 177	15.0 - 18.0	108 - 130
Spring front pin bolt to body	167 - 206	17.0 - 21.0	123 - 152
Spring shackle	50 - 68	5.1 - 6.9	37 - 50
Back plate and bearing housing fixing nut	53 - 63	5.4 - 6.4	39 - 46
Differential carrier			
Differential carrier to axle case			
Heavy duty	27 - 36	2.8 - 3.7	20 - 27
Light duty	11 - 14	1.1 - 1.4	8 - 10