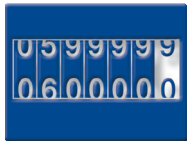


Genuine Subaru Parts MEANS BUSINESS!

Genuine SUBARU MAINTENANCE PARTS



Dirt. Dust. Heat. Friction. Contaminants.

They're out there, waiting to rob an automobile of its pep and performance And its value. Without regular maintenance, even the best designed vehicles soon lose that "new car" feeling.

The answer?

Regular maintenance by trained professionals. And Genuine Subaru Parts, specifically engineered to precise specifications. So they fit right, perform better and last longer.

While non-genuine parts may save a few pennies now, car owners often end up paying more for them in the long run. With poor performance. Shorter replacement intervals. And, in some cases, even costly damage as a result of parts that didn't quite fit or didn't quite meet the requirements of the car's original equipment.

Genuine Subaru Parts

To help Subaru owners get maximum enjoyment and value from their vehicles, your local Subaru dealer maintains a ready supply of frequently needed parts — at prices competitive with off-brand parts. Belts, hoses and spark plugs. Air filters, fuel filters and oil filters. Brake pads and shoes. Ignition wires and everything else you might need to help keep your customers' Subaru vehicles running smoothly. They're all specifically made for Subaru vehicles, and no matter what anyone might tell you, they aren't the same as those aftermarket imitations.

A few examples:

- Genuine Subaru Oil Filters have a resin-impregnated filter media for high dirt-holding capacity, and are built to rigid Subaru specifications.
- Genuine Subaru Air Filters have an oiled media of cellulose, synthetic fibers and thermoplastic resins designed for maximum filtering efficiency.

- Genuine Subaru Fuel Filters have high dirt-holding capacity and stainless steel construction to protect internal components and help prevent leaks.
- Genuine Subaru Micro-V belts are specially constructed with fiber-loaded reinforcement ribs to help resist wear and cracking.
- Subaru V-belts for use in engine drives have thermally active tensile cords for maintenance-free performance.
- Materials of OE brake pads are specifically formulated to be compatible with the rotor surface to help prevent brake judder, noise and excessive heat buildup, which can impair stopping effectiveness.
- Copper spark plugs feature the largest (2.6mm) center electrode in the industry for longer, more effective service life. A solid copper core provides wider heat range for protection from low speed fouling and pre-ignition. A high-alumina ceramic insulator helps resist cracking at high temperatures.
- Platinum spark plugs have up to twice as much platinum as typical aftermarket plugs, which provides long-lasting tune-ups, quicker starts, less wear on ignition components, lower emissions and better fuel economy.



Thank you for your interest in Genuine Subaru Parts.

The Subaru Parts Program offers the largest inventory of these OE-quality Subaru parts available anywhere. Pricing information for the following products is available through your authorized Subaru dealer. Please call for complete details.

► To find a maintenance part application, simply click on any of the parts categories shown to the right. You may also scroll through the application charts to find a specific part.

Maintenance Part Categories

Air Filters
Air Conditioning Belts
Alternator Belts
Brakes
Cabin Air Filter
Fuel Filter
Oil Filter
Spark Plugs
Timing Belt

GENUINE SUBARU MAINTENANCE PARTS



CAR MODEL	YEARS	PART #	NOTES
OIL FILTERS			
Legacy & Baja	1990-2005	15208AA060	2.2, EJ251, EJ253
	200302-200504	15208AA080	EJ255
	200009- 200502-	SOA5165109	6 cylinder
		15208AA100	2.5#
Impreza	199206-200605	15208AA100	1.8, 2.2, 2.51, 253
	200304-200605	15208AA100	Turbos
	200606-200706	15208AA100	25#
	200704-	15208AA100	253 + 255 + 257
Forester	199611-200202	15208AA060	251, 253
	200301-200703	15208AA100	Turbos
	200111-200703	15208AA100	251,253
	200702-	15208AA100	25#
B9 Tribeca	200411-	SOA5165109	30D & 36D
AIR FILTERS			
Legacy & Baja	To 5/98	16546AA020	
	6/98 - 5/99	16546AA07A	2.2 Cal.
	6/98 - 5/99	16546AA020	2.2 49 States & 2.5 Canada
	6/99-20060430	16546AA07A	2.5, U6
	200302-200402	16546AA080	U5
	9/00-200402	16546AA020	EZ30
Legacy 2005+	200311-20060630	16546AA10A	25# + 30D 2005MY-2006MY
	200511-	16546AA10A	253
	200511-	16546AA12A	255, 30D
Impreza	199206-199906	16546AA020	All models except those below
	199712- 200403	16546AA070	Calif.
	200009-200505	16546AA020	205 + 257
	200009-200403	16546AA070	251
	200401-200505	16546AA050	253
	200504-200706	16546AA020	25#
	200704-	16546AA090	253
	200704	16546AA120	255 + 257
Forester	199611-199906	16546AA020	EJ25D, EJ25DZ, EJ253
	199904-200403	16546AA070	EJ251, 251
	200301-200603	16546AA020	255
	200312-200603	16546AA020	253
	200602-	16546AA080	253, U5
	200602-	16546AA020	255, (LL, 25X, 25XS). 253, U6
B9 Tribeca	200411-200603	16546AA10A	30D
	200512-	16546AA12A	30D + 36D

This information is for general reference only. For specific application information, please refer to the most current Subaru parts catalog before ordering parts.

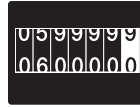
GENUINE SUBARU MAINTENANCE PARTS



CAR MODEL	YEARS	PART #	NOTES
FUEL FILTERS			
Legacy	1990 - 200306	42072PA010	All Models
Impreza	199206 - 200403	42072PA010	All Models Except STI
Forester	199611 - 200403	42072PA010	All Models
CABIN AIR FILTERS			
Legacy	200102-200306	G3210AE000	S.SUS6 +W.(OBK6+OBK6LB)
	200301-200402	G3210AE000	OBK6 +SUS6 +OBK6S +OBK6LB
Legacy 2005+	200410-	G3210AG000	S +SOBK +W +WOBK
Impreza	200210-200403	G3210FE100	S.STI
	200401-200505	G3210FE100	S.(WRX+STI) +W.WRX
	200504-	G3210FE100	S +W
Forester	200312-	G3010SA100	W
B9 Tribeca	200411-	72880XA00A	X
SPARK PLUGS			
Legacy & Baja	90 - 94	22401AA310	2.2, NGK BKR6E-11 (4 cyl.)
	95 - 5/99	22401AA550	2.2, Champ. RC10YC4 (4 cyl.)
	95 - 5/96	22401AA570	2.5, NGK PFR5B-11 (4 cyl.)
	6/96 - 5/99	22401AA370	2.5, NGK PFR6B-11 (4 cyl.)
	199906-20060430	22401AA550	Champ. RC10YC4 (4 cyl.)
	200302-20060430	22401AA630	NGK : ILFR6B (Turbo EJ255)
	200009-200402	22401AA580	EZ30, (6 cyl.) NGK : PLFR6A-11
	200302-200402	22401AA65A	for Cal Spec 03 Models single Platinum tipped, NGK : FR5AP-11
Legacy 2005+	200311-	22401AA65A	NGK : FR5AP-11, 253
	200311-	22401AA670	NGK : SILFR6A, 255
	200311-	22401AA630	NGK : ILFR6B 30D
Impreza	199206-200011	22401AA310	EJ18E, EJ22#, EJ251, EJ253 (NGK BKR6E-11 (4 cyl.)
	199701-199806	22401AA570	EJ25D, NGK PFR5B-11 (4 cyl.) Platinum Plug
	200009-200403	22401AA310	251, NGK BKR6E-11 (4 cyl.)
	200009-200505	22401AA531	2.0, NGK PFR6G (4 cyl.)
	200210-200505	22401AA630	257, NGK : ILFR6B
	200401-200706	22401AA650	253, FR5AP-11 Platinum Plug
	200504-200706	22401AA630	257, 255 NGK: ILFR6B
	200704-	22401AA650	253
200704-	22401AA670	255 + 257	
Forester	199611-199806	22401AA570	EJ25D, EJ25DZ, NGK PFR5B-11 (4 cyl.) Platinum Plug
	199803-200202	22401AA310	EJ251, EJ253, NGK BKR6E-11 (4 cyl.)
	200111-200403	22401AA310	251, NGK BKR6E-11 (4 cyl.)
	200301-	22401AA630	255, NGK : ILFR6B
	200312-	22401AA650	253, FR5AP-11 Platinum Plug
B9 Tribeca	200411-200704	22401AA630	30D, NGK: ILFR6B
	200611-	22401AA670	36D, SILFR6A

This information is for general reference only. For specific application information, please refer to the most current Subaru parts catalog before ordering parts.

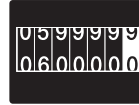
GENUINE SUBARU MAINTENANCE PARTS



CAR MODEL	YEARS	PART #	NOTES
BRAKE PADS AND SHOES			
Legacy	91 - 94	26296AA041	Front pads* Legacy Turbo
	To 5/96	26296AA163	Front pads*
	May - 96	26296AA061	Rear pads*
	95 - 5/96	26296AA183	Front pads*
	6/96 - 5/99	26296AC040	Front pads*
	5/97 - 5/99	26296AC070	Front pads* Turbo W Ltd.
	90 - 98	26298AA020	Rear shoes, Disc for drum (Qty. 1)
	95 - 98	26298AA010	Rear shoes, Drum only rear (Qty. 1)
	6/96 - 5/99	26296AC000	Front pads* SW Postal, Sedan/SW Bri.,
	6/96 - 5/99	26296AC020	Front pads* L & LS
	6/96 - 5/99	26296AA062	Rear pads*
	199906-200104	26296AE002	Front pads* Brighton
	199906-200104	26694AE001	Rear shoes*
	199906-200104	26296AE081	Front pads* L, GT, Outback
	200110-200204	26296FE020	Front pads* SUS, GT, Outback
	200205-200207	26296FE020	Front pads* S+W+Baja
	200207-200306	26296FE020	Front pads* S.EJ25# +W.EJ25# +Baja
199906-200104	26696FC002	Rear pads* L, GT, Outback	
Legacy & Baja	200207-200305	26296AE160	Front pads* SUS6 + OBK + OBK6LB
	199906-200105	26694AE020	Rear shoes L, GT, Outback, Baja
	200302-200402	26296AE160	Front pads* S+W+Baja
	200105-200402	26696AE020	Rear pads* L, GT, Outback, Baja
	200102-20060430	26694AE020	Rear shoes S+W+Baja
	200402-20060430	26696AE060	Rear pads* Baja
Legacy 2005+	200311-20060630	26296AG000	Front pads* 25 GT + 25 GTLTD
	200311-200703	26696AE040	Rear pads* 25 GT + 25 GTLTD
	200311-200606	26296AE160	Front pads* 30R + 30RLB +30RLTD + WOBK.4AT + WOBK.25i.MT
	200311-200505	26696AG000	Rear pads* 30R + 30RLB +30RLTD + 4AT + 25i.MT +25iLTD.MT
	200311-200606	26296FE081	Front pads* W.4AT+S.4AT+W.25i.MT+ S.25i.MT+W.25iLTD.MT+S.25iLTD.MT
	200311-200505	26694AE020	Rear shoes W+S+30R + 30RLB +30RLTD + WOBK.MT+WOBK.4AT + WOBK.25GTLTD.5AT
	200410-200703	26696AG030	Rear pads* 30R + 30RLB +30RLTD + 4AT + 25i.MT +25iLTD.MT
	200410-	26694AG000	Rear shoes W+S+30R + 30RLB +30RLTD + WOBK.MT+WOBK.4AT + WOBK.25GTLTD.5AT
	200511-	26296AG050	Front Pads, 25 GT + 25 GTLTD
	200511-200703	26296FE081	Front Pads S.I.#+SOBK+W.I.#+WOBK
	200610-	26296AE160	Front Pads S.I.#+W.I.#+WOBK
	200610-	26696AE040	Rear Pads S.(GT#+30RLTD)+W.25GTLTD
	200610-	26696AG030	Rear Pads S.I.#+W.I.#+WOBK

This information is for general reference only. For specific application information, please refer to the most current Subaru parts catalog before ordering parts.

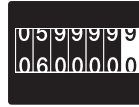
GENUINE SUBARU MAINTENANCE PARTS



CAR MODEL	YEARS	PART #	NOTES
BRAKE PADS AND SHOES (continued)			
Impreza	To 6/96	26296AA143	Front pads, 13" & 14" 2WD*
	To 6/96	26296FA001	Front pads, 13" & 14" 4WD w/ABS
	7/96 - 6/99	26296AC020	Front pads, 13" & 14"*
	199907-200011	26296AC021	Front pads, 13" & 14"*
	6/97 - 6/99	26296AC040	Front pads, 15"*
	199907-200011	26296AC041	Front pads, 15"*
	To 6/98	26296AA062	Rear pads*
	7/98 - 6/99	26696FC000	Rear pads*
	199907-200011	26696FC002	Rear pads*
	200009-200212	26296FE020	Front pads, Non-WRX*
	200009-200212	26696FC002	Rear pads, Non-WRX*
	200009-200206	26296FE060	Front pads* WRX
	200009-200212	26696FC002	Rear pads, discs WRX
	200207-200212	26296SA000	Front pads* WRX
	200210-200505	26296SA020	Front pads* WRX
	200504-200706	26296FE070	Front pads* WRX
	200504-200706	26696FE070	Rear pads, WRX
	200504-200706	26696FE050	Rear pads, Non-WRX*
	200210-200505	26296SA020	Front pads* WRX
	200210-200505	26696FE040	Rear pads, discs WRX
	200210-200403	26296FE041	Front pads* STI
	200401-200702	26296FE100	Front pads* STI
	200210-200403	26696FE000	Rear pads, discs STI
	200401-200706	26696FE080	Rear pads, discs STI
	200210-200505	26296FE080	Front pads, Non-WRX*
	200210-200505	26696FE040	Rear pads, Non-WRX*
	200504-200706	26296FE081	Front pads, Non-WRX
	200606-200702	26296FE120	Front pads, STI LTD
	200703-200706	26296FE120	S.STI# Front
	200704-	26296AE160	Front pads S.(WRX+WRXS) +W. (WRX+WRXS)
	200704-	26296FE081	Front pads S.(25I+25IS) +W. (25I-25IS+OBKS)
	200704-	26296FE120	Front pads W. STI
	200704-	26696AG030	Rear pads S.25I
	200704-	26696AG030	Rear pads W.25I
200704-	26696AG030	Rear pads S.25IS	
200704-	26696AG030	Rear pads S.(WRX+WRXS) + W. (25IS+OBKS+WRX+WRXS)	
200704-	26696FG000	Rear pads W. STI	
Forester	199707-200202	26296AC060	Front pads*
	199707-200202	26696FC002	Rear pads*
	200111-200303	26296SA000	Front pads*
	200111-200303	26696FC002	Rear pads*
	200301-200705	26296SA020	Front pads*
	200301-200503	26696FE040	Rear pads*
	200705-	26296AE160	Front pads
200501-	26696FE050	Rear pads*	

This information is for general reference only. For specific application information, please refer to the most current Subaru parts catalog before ordering parts.

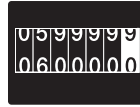
GENUINE SUBARU MAINTENANCE PARTS



CAR MODEL	YEARS	PART #	NOTES
BRAKE PADS AND SHOES (continued)			
B9 Tribeca	200411-	26296XA000	Front pads
	200411-	26696XA000	Rear pads
TIMING BELTS			
Legacy & Baja	90 - 94	13028AA102	
	95 - 5/98	13028AA102	2.2 49 States & Canada
	95 - 5/98	13028AA150	2.2 California
	95 - 5/99	13028AA072	2.5
	6/98 - 5/99	13028AA181	2.2
	199906-20060430	13028AA21B	EJ25#
	200302-200504	13028AA200	EJ255
	200502-20060430	13028AA240	EJ255
Legacy 2005+	200311-	13028AA21B	253
	200311-200505	13028AA200	255
	200410-	13028AA240	255
Impreza	To 8/93	13028AA102	
	9/93 - 6/98	13028AA102	49 States & Canada
	9/93 - 6/98	13028AA150	California
	6/97 - 6/98	13028AA072	2.5
	199712-200011	13028AA181	EJ22#, EJ251, EJ253
	200009-200505	13028AA200	205 + 257
	200009-200403	13028AA181	251
	200401-200706	13028AA181	253
	200504-200706	13028AA240	255 & 257
	200704-	13028AA230	253
	200704-	13028AA240	255 + 257
Forester	199611-199806	13028AA072	EJ25D, EJ25DZ
	199803-200202	13028AA181	EJ251, EJ253
	200111-200403	13028AA181	251
	200312-	13028AA181	253
	200301-200503	13028AA200	255
	200501-	13028AA240	255
ALTERNATOR BELTS			
Legacy & Baja	90 - 94	809218140	
	95 - 99	809218140	with PS
	199906-200105	809218200	EJ25#
	200302-20060430	809218260	EJ25#
	200302-200504	809218300	EJ255
	200009-200402	809221050	EZ30D
	200502-20060430	809218430	EJ255

This information is for general reference only. For specific application information, please refer to the most current Subaru parts catalog before ordering parts.

GENUINE SUBARU MAINTENANCE PARTS



CAR MODEL	YEARS	PART #	NOTES
ALTERNATOR BELTS (CONT.)			
Legacy 2005+	200311-200505	809218270	253
	200311-200505	809218340	255
	200311-	809221080	30D
	200410-200603	809218400	25#
Impreza	11/92 - 2/01	809218140	
	200009-200212	809218250	205 + 251
	200210-200505	809218300	20# + 25#
	200501-200706	809218430	255 + 257
	200501-200706	809218400	253
	200704-	809218420	253, 257
	200704-	809218430	255
Forester	199611-200002	809218140	EJ25D, EJ25DZ, EJ251, EJ253
	200003-200202	809218250	EJ251
	200111-200503	809218300	25#
B9 Tribeca	200501-	809218400	253
	200501-	809218430	255
	200411-200704	809221090	30D
	200611-	809221120	36D
Forester	199611-	73323AC000	W
AIR CONDITIONING BELTS			
Legacy & Baja	90 - 199704	73013AA000	
	199705-199905	73323AC000	
	199902-200105	73323AC000	S+W
	200311-20060430	73323AC000	BAJAB
	200102-20060430	73323AE00A	S+W + BAJA NON-TURBO
Legacy 2005+	200311-200407	809214470	TURBO
	200311-200407	809214500	NORMALLY ASPIRATED
	20040720 -	809214500	ALL H4
Impreza	To 6/96	73013AA000	
	8/96 -200403	73323AC000	S+W Gates belt
	200009-200706	73323AC010	S+W Mitsuboshi
Forester	199611-200701	73323AC000	W Gates belt
	200701-	73323SA000	W

This information is for general reference only. For specific application information, please refer to the most current Subaru parts catalog before ordering parts.