

SERVICE BULLETIN

APPLICABILITY

ALL LEGACY MODELS, INCLUDING TURBO

DATE

02-05-93

SUBJECT:

EXHAUST PIPE "EPR" WHISTLING NOISE

If you encounter a customer complaint of a whistling noise while driving, remove the rear pipe and perform the following:

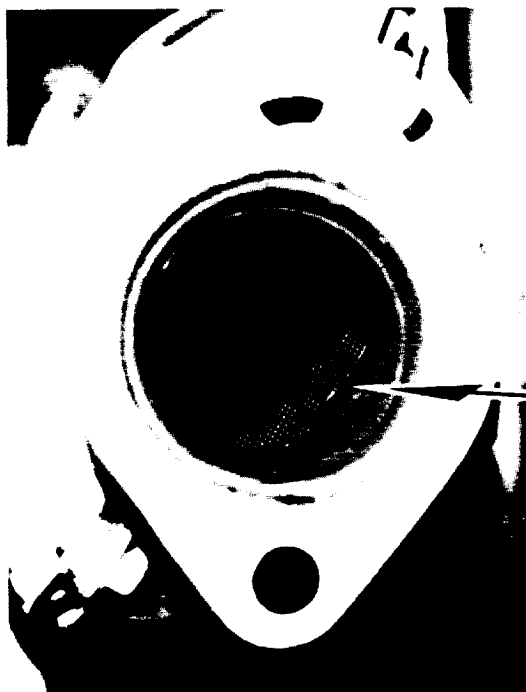
Visually examine the rear catalytic converter inlet shield ring for a bend in the ring in the shape of a "VEE". See Figure 1, below.

Using compressed air and an air blow gun, with a tip 6 to 8 inches long, blow air around the shield ring. If the shield ring begins to whistle the "EPR" or rear pipe needs to be replaced. EPR pipes, produced on and after October 1, 1992, will have a modified shield ring to prevent the whistling sound. See Figure 2 for production code identification.

2 X 15

YEAR MONTH DAY

If you are replacing the EPR pipe with a pipe before the production change you will need to perform the shield ring test as described in the opening paragraph.



**Bent
Shield
Ring**

Figure 1



**Lot
Number**

Figure 2

CAUTION

VEHICLE SERVICING PERFORMED BY UNTRAINED PERSONS COULD RESULT IN SERIOUS INJURY TO THOSE PERSONS OR TO OTHERS.

Subaru Service Bulletins are intended for use by professional technicians ONLY. They are written to inform those technicians of conditions that may occur in some vehicles, or to provide information that could assist in the proper servicing of the vehicle. Properly trained technicians have the equipment, tools, safety instructions, and know-how to do the job correctly and safely. If a condition is described, DO NOT assume that this Service Bulletin applies to your vehicle, or that your vehicle will have that condition. Impreza is a Trademark and Legacy, Justy, Loyale and Subaru SVX are Registered Trademarks.