

## SERVICE BULLETIN

### APPLICABILITY

1990-1993 LEGACY WITH ABS-2S SYSTEMS

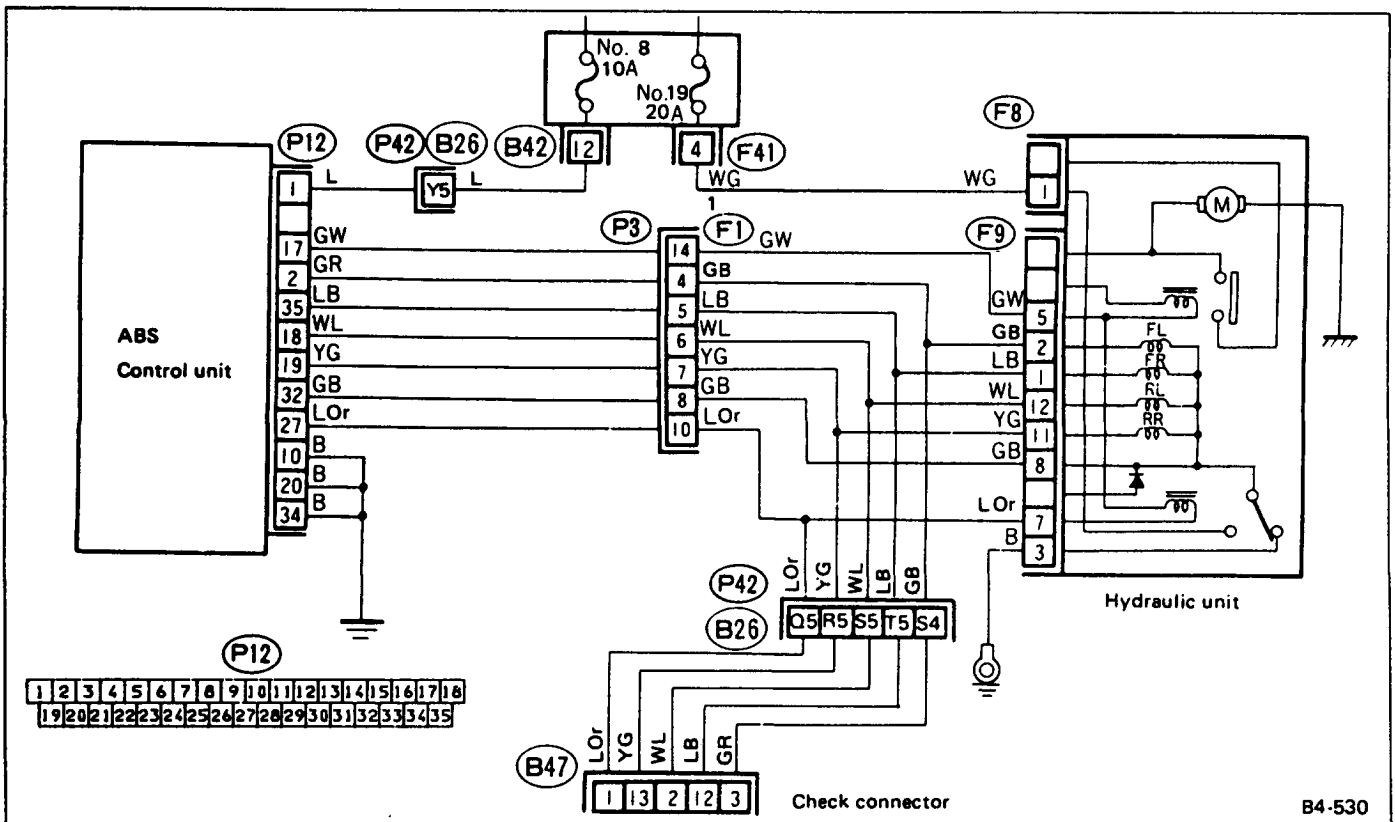
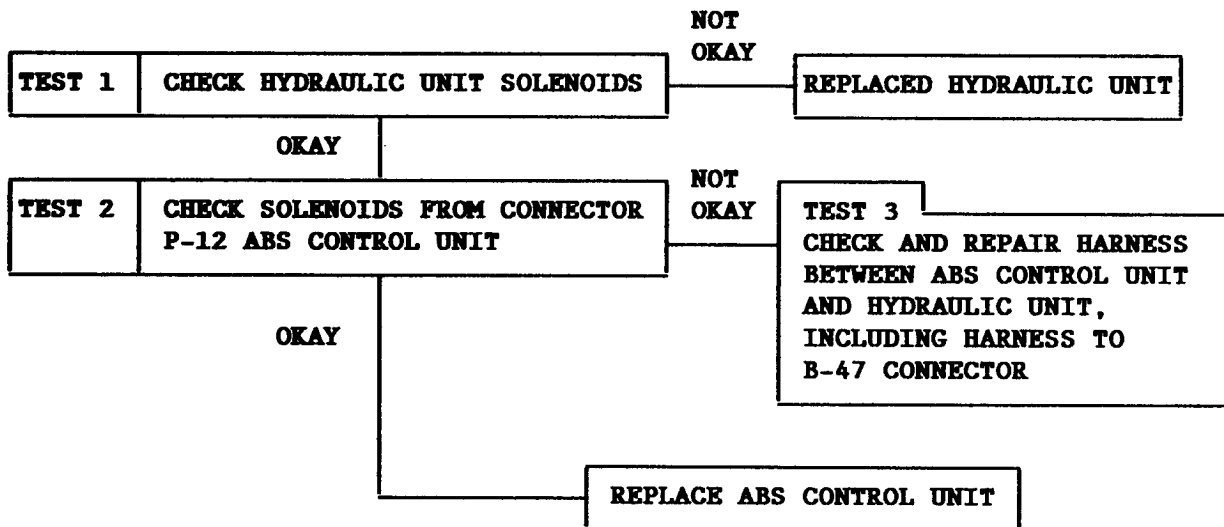
### DATE

10/29/93

### SUBJECT:

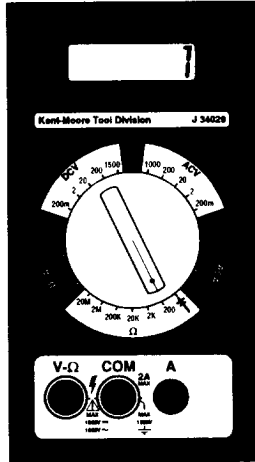
SERVICE PROCEDURES FOR CODES 1-4, SECTION 4-4

Use this revised diagnostic trouble chart when the ABS lamp is on and the control unit LED is flashing a Code 1 to 4.



**TEST 1. Check Hydraulic Unit Solenoids**

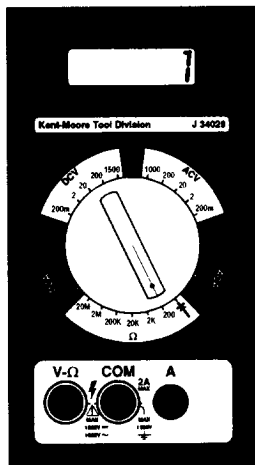
- 1) Disconnect connector F-9 at hydraulic unit.
- 2) Measure resistance between specified terminals on hydraulic unit side connector.



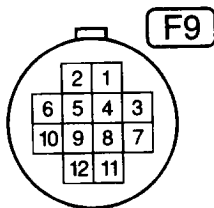
Trouble code	Valve	Connector & Terminal	
1	FL	F-9	8--2
2	FR	F-9	8--1
3	RR	F-9	8--11
4	RL	F-9	8--12
SPECIFIED RESISTANCE APPROXIMATELY 1 OHM			

**TEST 2. Check Solenoids From P-12**

- 1) Remove the passenger's seat and expose the control unit by pulling the rug back.
- 2) Re-connect connector F-9 and disconnect connector P-12 at ABS control unit.
- 3) Measure resistance between specified terminals at P-12 connector.

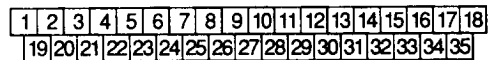


Trouble code	Valve	Connector & Terminal	
1	FL	P-12	32--2
2	FR	P-12	32--35
3	RR	P-12	32--19
4	RL	P-12	32--18
SPECIFIED RESISTANCE APPROXIMATELY 1 OHM			



Hydraulic Unit Side Connector

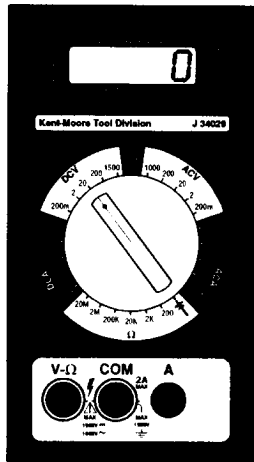
P12 (Blue)



ABS Control Unit Connector

**TEST 3. Check Harness Between P-12 and F-9 for a Short to Voltage**

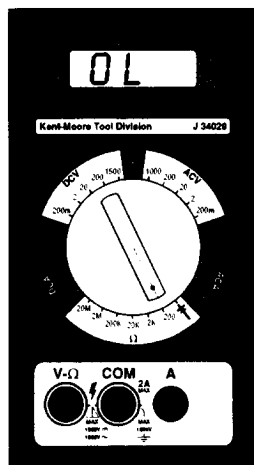
- 1) Disconnect connectors P-12 and F-9.
- 2) Measure voltage between specified terminals and body ground with key on and off.



Trouble code	Valve	Connector & Terminal	
1	FL	P-12	2--Body
2	FR	P-12	35--Body
3	RR	P-12	19--Body
4	RL	P-12	18--Body
SPECIFIED VOLTAGE 0 VOLTS			

**Check Harness Between P-12 and F-9 for a Short to Ground**

- 1) Disconnect connectors P-12 and F-9.
- 2) Measure resistance between specified terminals and body.



Trouble code	Valve	Connector & Terminal	
1	FL	P-12	2--Body
2	FR	P-12	35--Body
3	RR	P-12	19--Body
4	RL	P-12	18--Body
SHOULD HAVE OPEN CIRCUIT (INFINITE OHMS)			