

SUBARU 

***INSTALLATION
INSTRUCTIONS***

*Remote Keyless Entry
System*

LEGACY

P/N: H7150 LS000

Kit Contents:

- 1 Keyless Entry Control Module w/Integral Bracket
- 2 Remote Control Transmitters
- 1 Installation Manual

Tools Required:

- #2 Phillips Head Screwdriver
- 1/4" Drive Ratchet
- 4-inch 1/4" Drive Extension
- 1/4" Swivel
- 10 mm Socket
- Electrical Tape

This device complies with FCC rules part 15. Operation is subject to the following two conditions: (1) this device may not cause harmful interference and (2) this device must accept any interference that may cause undesired operation.

A. Pre-Installation Notes

1. Vehicle Preparation

- Lower the driver's side window to avoid inadvertently locking the keys in the vehicle during installation.
- Disconnect negative battery terminal to prevent accidental shorting of any power circuits.

2. System Preparation

Remove the keyless module and transmitters from the package and inspect for any physical damage.

B. Installation

- Open the glove compartment. Push the side of the glove compartment inward and disengage the knockout pins (one each on the left side and right side) indicated by the right arrow in Figure 1.

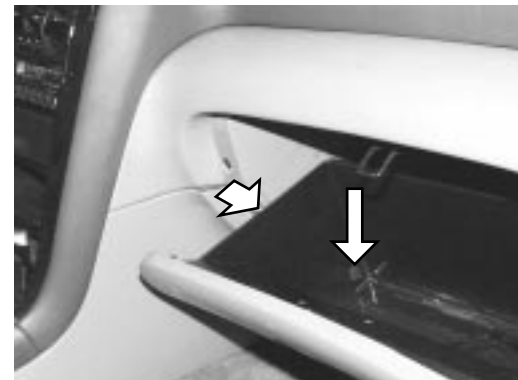


Figure 1

- Remove the right lower center console by removing the screw indicated by the arrow in Figure 2 and the two screws indicated by the arrows "A" in Figure 3 and disengaging the clip by pulling the portion marked with "C" in Figure 2.

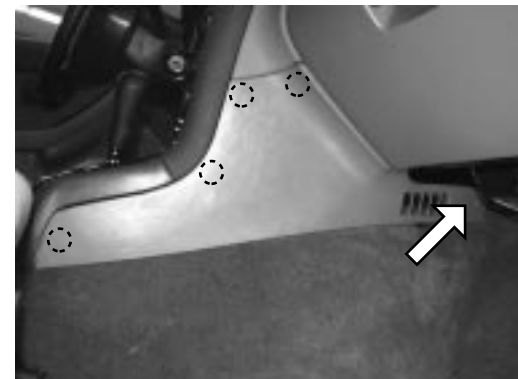


Figure 2

- Remove the glove compartment by removing the eight screws indicated by the arrows "B" in Figure 3 and disconnecting the harness for the glove compartment light. Remove glove compartment knockout pins to facilitate later reinstallation.

The door lock timer module will be found at the right inmost side of the glove compartment.

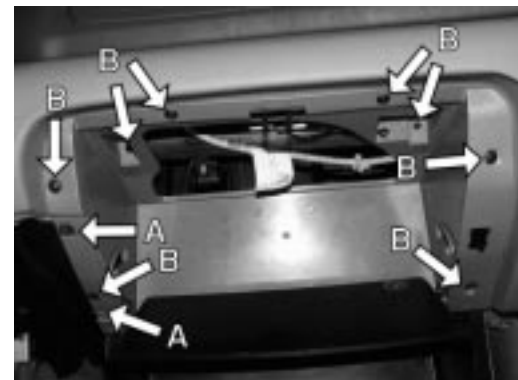


Figure 3

4. Remove the M6 nut, indicated by the arrow in Figure 4, securing both the door lock timer module and cruise control module. Disconnect the door lock timer harness from the module and discard the module.



Figure 4

5. Tape (or wire tie) the disconnected harness to another harness in the immediate vicinity in order to prevent rattling.
6. Locate the keyless entry 16-pin (white housing) connector. This will be found in the same vicinity as the door lock timer module. Remove and discard the 16-pin shorting loop connector.
7. Insert the keyless entry 16-pin connector into the keyless entry module.
8. Install the keyless entry module on the stud previously used by the door lock timer module and secure it and the cruise control module together in place with the M6 nut removed in step 4. Refer to Figure 5 which shows the installed keyless entry module.



Figure 5

Keyless entry module

NOTE:

When installing the keyless entry module and the cruise control module, place the keyless entry module bracket into the cruise control module in the position as shown in Figure 6. Both harnesses should be facing downward and module labels facing towards rear of vehicle.



Cruise control module

Figure 6

C. System Test

1. Reconnect the negative battery terminal. Be sure to tighten mounting clamp.
2. Close all vehicle doors (with dome light switch set to “Doors”).
3. Depress the LOCK/ARM button on the remote and the following should be observed:
 - 3.1 All vehicle doors will lock
 - 3.2 The vehicle courtesy (dome) light will turn off
 - 3.3 The horn will chirp once.

C. System Test

4. Depress the UNLOCK/DISARM button on the remote and the following should be observed:
 - 4.1 The driver's door will unlock
 - 4.2 The vehicle courtesy (dome) light will turn on (for a maximum of 30 seconds unless a door is opened and/or the ignition key is turned on)
 - 4.3 The horn will chirp twice.
5. Depress the UNLOCK/DISARM button a second time and the remaining doors should unlock.
6. Depress and hold the LOCK/ARM button (panic mode) for more than 2 seconds and the following should be observed:
 - 6.1 The horn will sound (for a maximum of 30 seconds or until a button on the remote is depressed).
7. Depress any button on the remote and the horn should stop sounding.
8. Depress the UNLOCK/DISARM button.
9. Simultaneously depress and hold the LOCK/ARM and UNLOCK/DISARM buttons for more than 2 seconds and the following should be observed:
 - 9.1 The horn will chirp 2 times indicating that the audible verification has been turned off.
10. Depress the LOCK/ARM button on the remote and the following should be observed:
 - 10.1 All vehicle doors will lock
 - 10.2 The vehicle courtesy (dome) light will turn off
 - 10.3 NO HORN SHOULD BE HEARD.
11. Depress the UNLOCK/DISARM button on the remote and the following should be observed:
 - 11.1 The driver's door will unlock
 - 11.2 The vehicle courtesy (dome) light will turn on (for a maximum of 30 seconds unless a door is opened and/or the ignition key is turned on)
 - 11.3 NO HORN SHOULD BE HEARD.
12. Simultaneously depress and hold the LOCK/ARM and UNLOCK/DISARM buttons for more than 2 seconds and the following should be observed:
 - 12.1 The horn will chirp 1 time indicating that the audible verification has been turned on.
13. Repeat steps 3 and 4 to ensure that audible mode is once again functioning.
14. Repeat steps 2 through 7 with the second remote transmitter.

D. Notes on System Operation

1. The panic mode will remain active for 30 seconds unless another button on the remote is activated to cancel the mode.
2. If any secured opening (except the trunk) is open at the time of depressing LOCK/ARM on the remote transmitter, the horn will chirp 3 times indicating that all openings have not been properly closed. Upon closing, all doors will lock automatically.
3. Audible "ON" "OFF" can not be toggled unless the driver's door is unlocked.

E. Finish the Installation

1. Replace the right lower center console and glove box securing them with the two screws previously removed in section B.

Installation is now complete.