

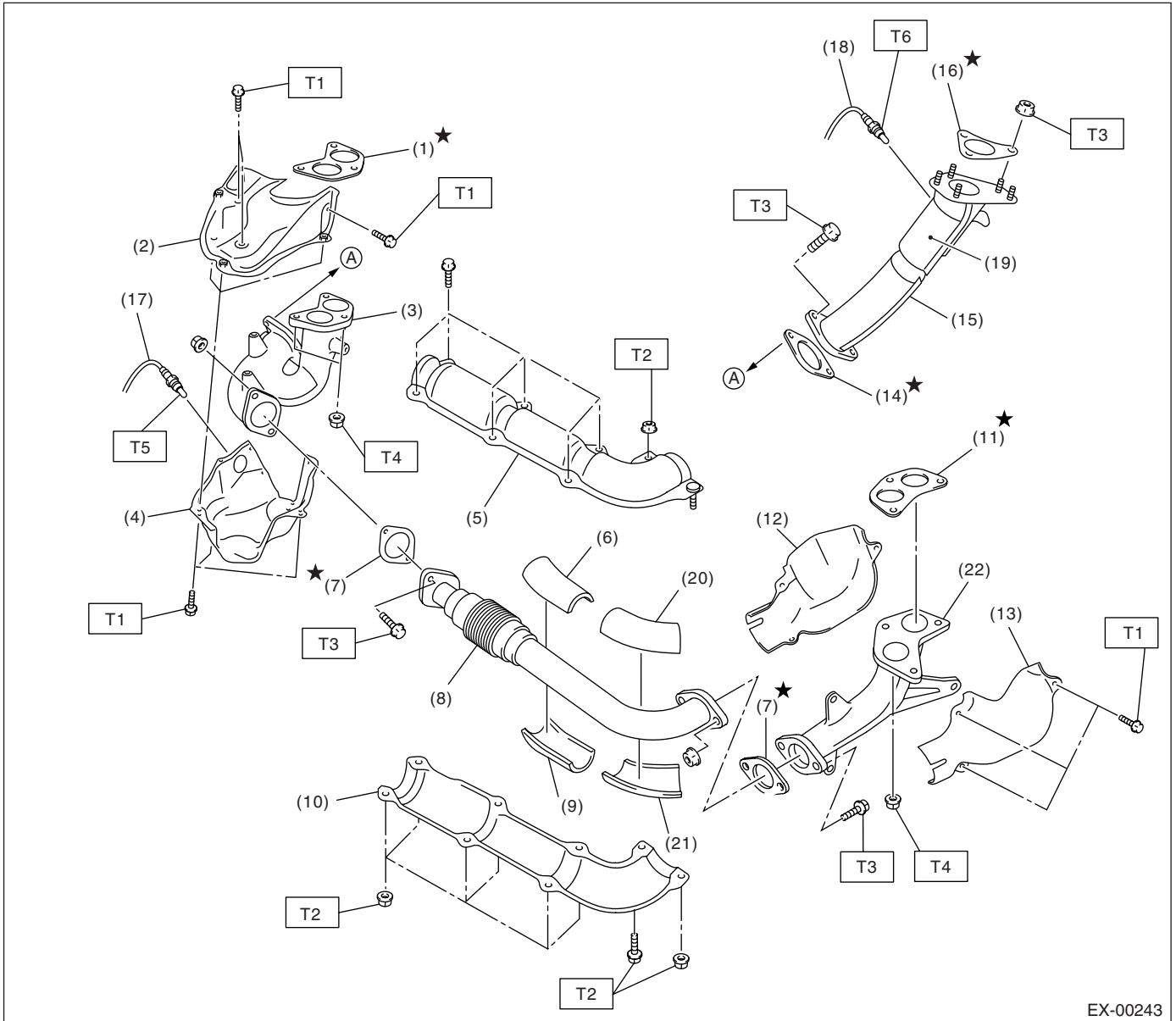
GENERAL DESCRIPTION

EXHAUST

1. General Description

A: COMPONENT

1. FRONT EXHAUST PIPE



EX-00243

GENERAL DESCRIPTION

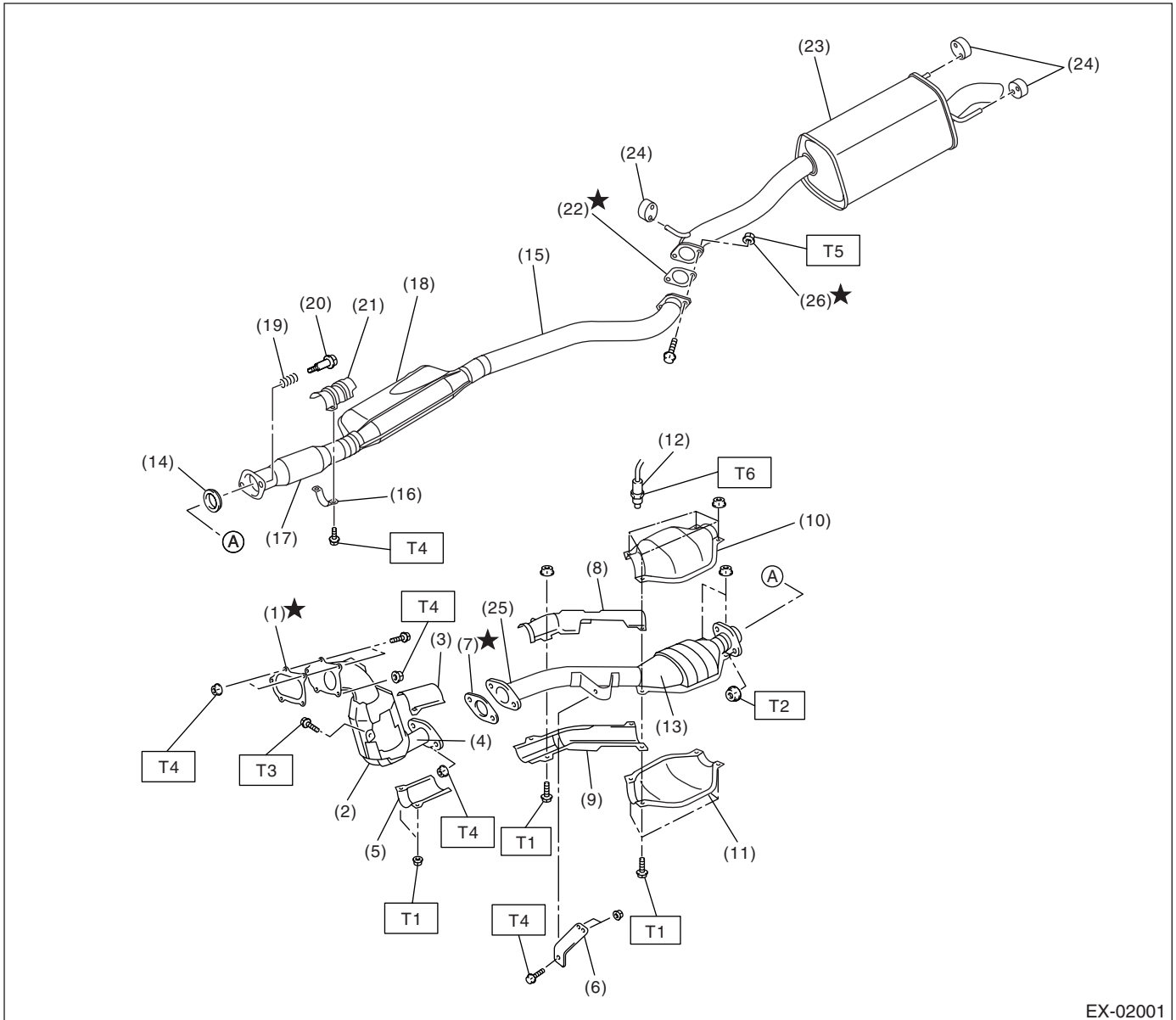
EXHAUST

(1) Gasket	(12) Exhaust manifold upper cover (LH)	Tightening torque: N-m (kgf-m, ft-lb) T1: 19 (1.9, 13.7) T2: 7.5 (0.8, 5.5) T3: 35 (3.6, 26.0) T4: 40 (4, 28.9) T5: <Ref. to FU(H4DOTC)-38, INSTALLATION, Front Oxygen (A/F) Sensor.> T6: <Ref. to FU(H4DOTC)-42, INSTALLATION, Exhaust Temperature Sensor.>
(2) Exhaust manifold upper cover (RH)	(13) Exhaust manifold lower cover (LH)	
(3) Exhaust manifold (RH)	(14) Gasket	
(4) Exhaust manifold lower cover (RH)	(15) Turbocharger joint pipe	
(5) Front exhaust pipe upper cover	(16) Gasket	
(6) Front exhaust pipe upper insulator (RH)	(17) Front oxygen (A/F) sensor	
(7) Gasket	(18) Exhaust temperature sensor	
(8) Front exhaust pipe	(19) Precatalytic converter	
(9) Front exhaust pipe lower insulator (RH)	(20) Front exhaust pipe upper insulator (LH)	
(10) Front exhaust pipe lower cover	(21) Front exhaust pipe lower insulator (LH)	
(11) Gasket	(22) Exhaust manifold (LH)	

GENERAL DESCRIPTION

EXHAUST

2. CENTER AND REAR EXHAUST PIPE, AND MUFFLER



EX-02001

- | | | |
|---|--|---------------------------------|
| (1) Gasket | (13) Rear catalytic converter | (25) Center exhaust pipe (Rear) |
| (2) Front catalytic converter | (14) Gasket | (26) Self-locking nut |
| (3) Center pipe upper cover (Front) | (15) Rear exhaust pipe | |
| (4) Center exhaust pipe (Front) | (16) Clamp | |
| (5) Center pipe lower cover (Front) | (17) Chamber (Front) | |
| (6) Bracket | (18) Chamber (Rear) | |
| (7) Gasket | (19) Spring | |
| (8) Center pipe upper cover (Rear) | (20) Bolt | |
| (9) Center pipe lower cover (Rear) | (21) Rear exhaust pipe upper cover (Front) | |
| (10) Rear catalytic converter upper cover | (22) Gasket | |
| (11) Rear catalytic converter lower cover | (23) Muffler | |
| (12) Rear oxygen sensor | (24) Cushion rubber | |

Tightening torque: N·m (kgf·m, ft·lb)

T1: 13 (1.3, 9.6)

T2: 18 (1.8, 13.0)

T3: 30 (3.1, 22.4)

T4: 35 (3.6, 26.0)

T5: 48 (4.9, 35.4)

T6: <Ref. to FU(H4DOTC)-40, INSTALLATION, Rear Oxygen Sensor.>

B: CAUTION

- Wear working clothing, including a cap, protective goggles, and protective shoes during operation.
- Remove contamination including dirt and corrosion before removal, installation or disassembly.
- Keep the disassembled parts in order and protect them from dust or dirt.
- Before removal, installation or disassembly, be sure to clarify the failure. Avoid unnecessary removal, installation, disassembly, and replacement.
- Be careful not to burn your hands, because each part on the vehicle is hot after running.
- Be sure to tighten fasteners including bolts and nuts to the specified torque.
- Place shop jacks or safety stands at the specified points.
- Before disconnecting electrical connectors of sensors or units, be sure to disconnect the ground cable from battery.