

GENERAL DESCRIPTION

FUEL INJECTION (FUEL SYSTEMS)

1. General Description

A: SPECIFICATIONS

Fuel tank	Capacity	64 ℓ (16.9 US gal, 14.1 Imp gal)
	Location	Under rear seat
Fuel pump	Type	Impeller
	Shutoff discharge pressure	450 — 677 kPa (4.59 — 6.9 kg/cm ² , 65.27 — 98.2 psi)
	Discharge flow	More than 130 ℓ (34.3 US gal, 28.6 Imp gal)/h [12 V at 300 kPa (3.06 kg/cm ² , 43.5 psi)]
Fuel filter		Cartridge type

GENERAL DESCRIPTION

FUEL INJECTION (FUEL SYSTEMS)

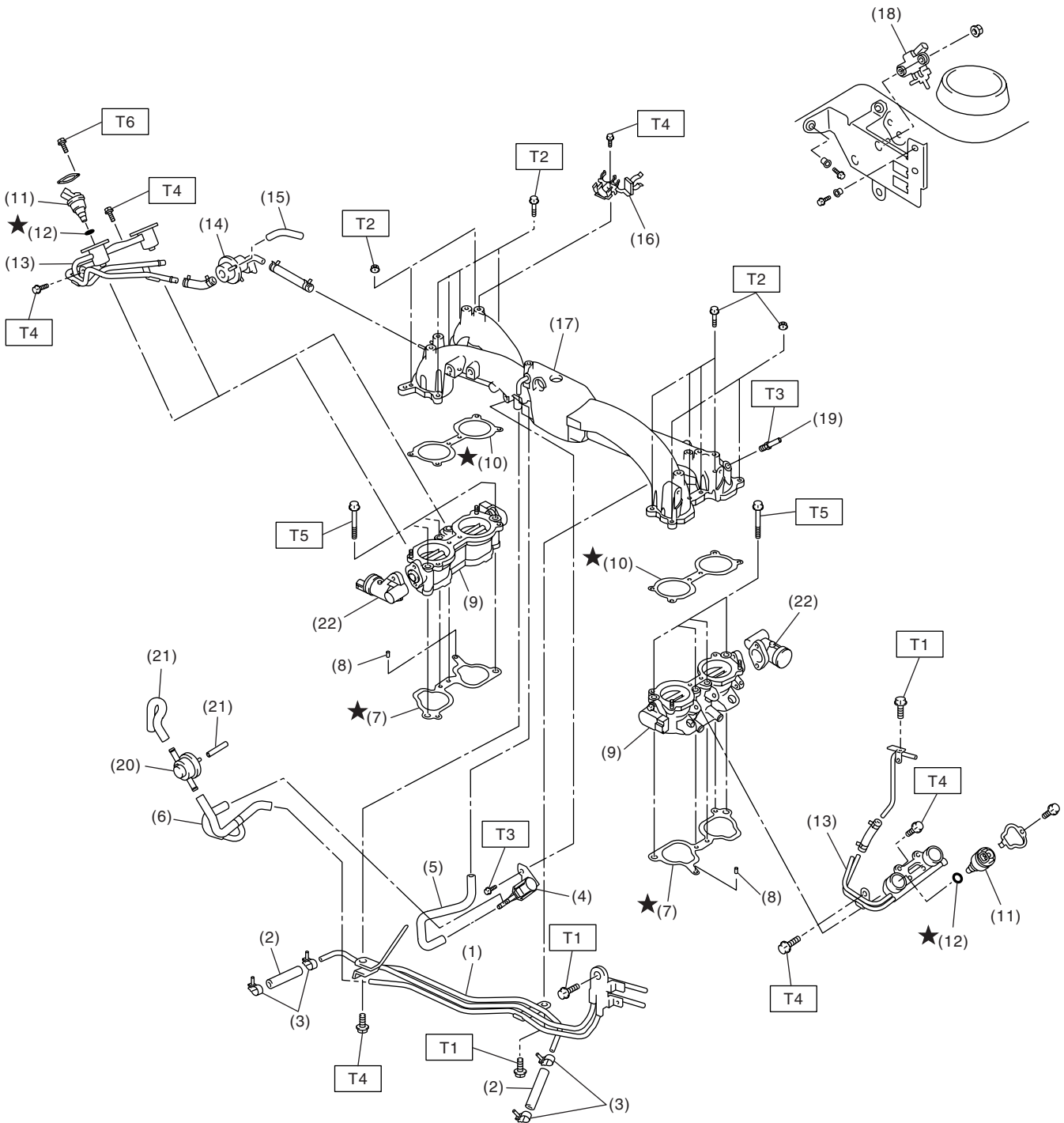
MEMO:

GENERAL DESCRIPTION

FUEL INJECTION (FUEL SYSTEMS)

B: COMPONENT

1. INTAKE MANIFOLD



FU-02548

FU(H4DOTC)-4

GENERAL DESCRIPTION

FUEL INJECTION (FUEL SYSTEMS)

- (1) Fuel pipe ASSY
- (2) Fuel hose
- (3) Clip
- (4) Purge control solenoid valve
- (5) Vacuum hose
- (6) Vacuum control hose
- (7) Intake manifold gasket
- (8) Guide pin
- (9) Tumble generator valve ASSY
- (10) Tumble generator valve gasket
- (11) Fuel injector
- (12) O-ring

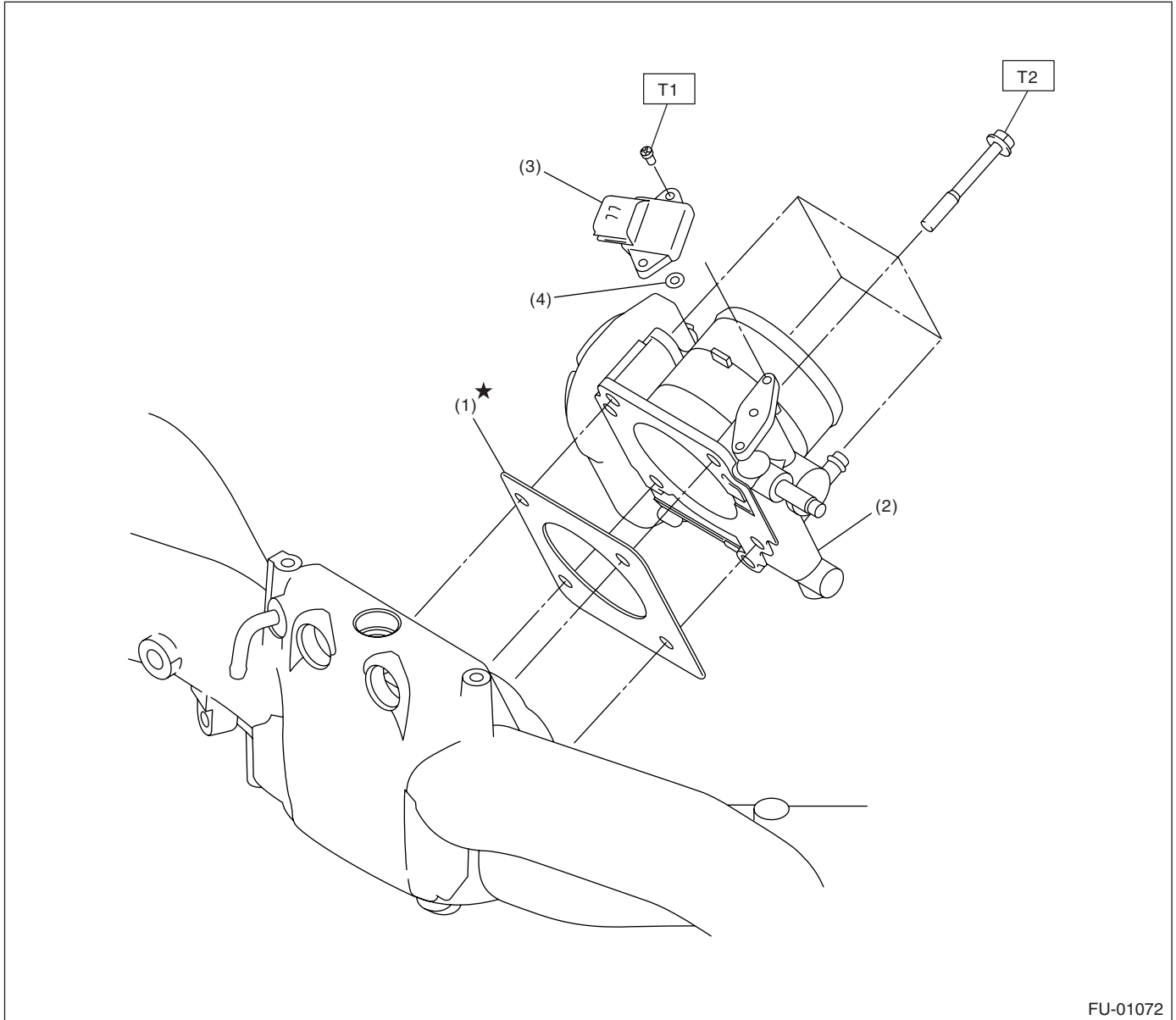
- (13) Fuel injector pipe
- (14) Pressure regulator
- (15) Pressure regulator hose
- (16) Blow-by hose stay
- (17) Intake manifold
- (18) Wastegate control solenoid valve ASSY
- (19) Nipple
- (20) Purge valve
- (21) Purge hose
- (22) Tumble generator valve actuator

Tightening torque: N-m (kgf-m, ft-lb)**T1: 6.4 (0.65, 4.8)****T2: 8.25 (0.84, 6.1)****T3: 17 (1.73, 12.5)****T4: 19 (1.94, 13.7)****T5: 25 (2.5, 18.1)****T6: 3.5 (0.36, 2.6)**

GENERAL DESCRIPTION

FUEL INJECTION (FUEL SYSTEMS)

2. AIR INTAKE SYSTEM



FU-01072

- (1) Gasket
- (2) Throttle body

- (3) Manifold absolute pressure sensor
- (4) O-ring

Tightening torque: N·m (kgf·m, ft·lb)

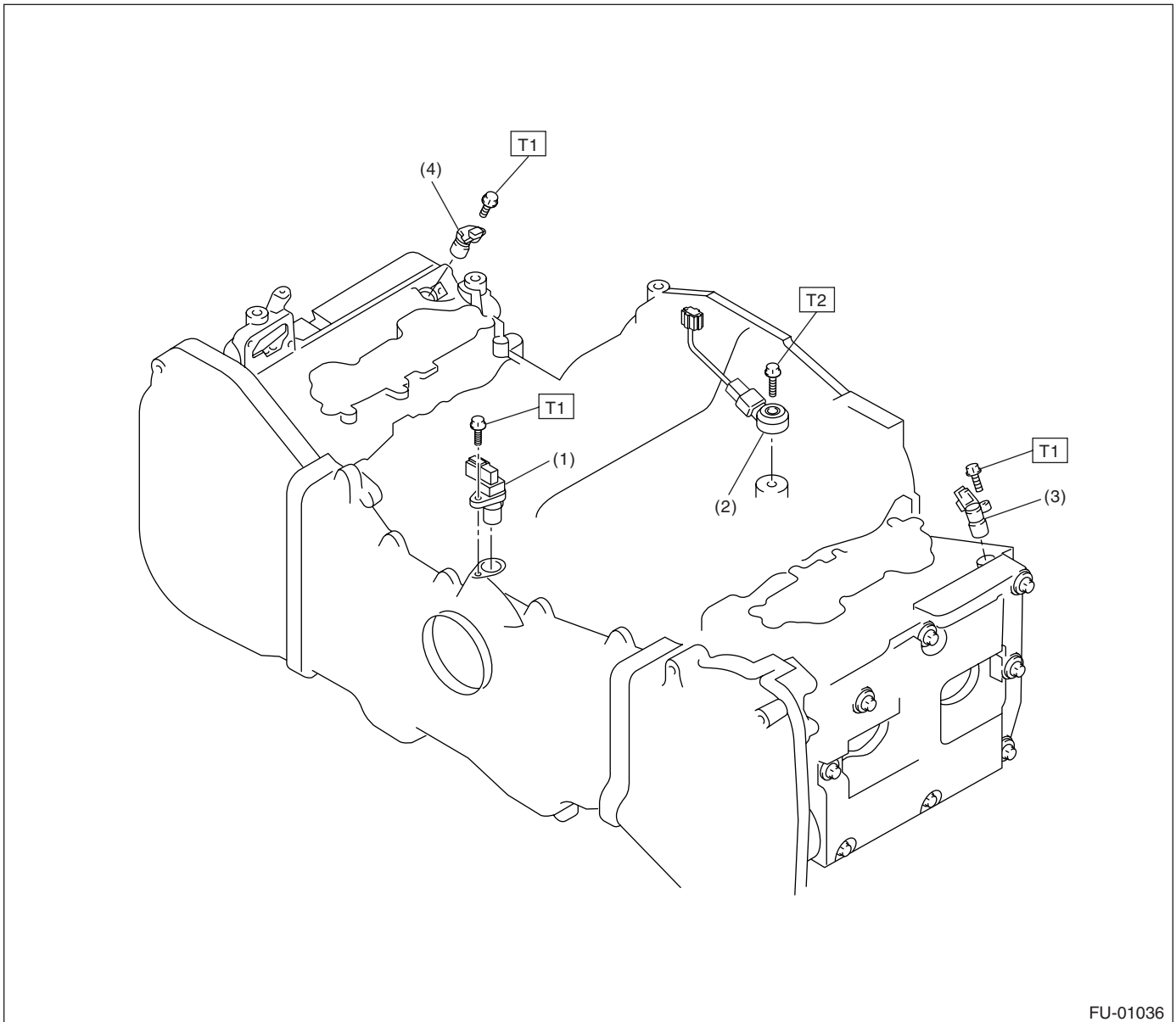
T1: 2 (0.20, 1.5)

T2: 8 (0.8, 5.8)

GENERAL DESCRIPTION

FUEL INJECTION (FUEL SYSTEMS)

3. CRANKSHAFT POSITION, CAMSHAFT POSITION AND KNOCK SENSORS



FU-01036

- (1) Crankshaft position sensor
- (2) Knock sensor

- (3) Camshaft position sensor LH
- (4) Camshaft position sensor RH

Tightening torque: N·m (kgf-m, ft-lb)

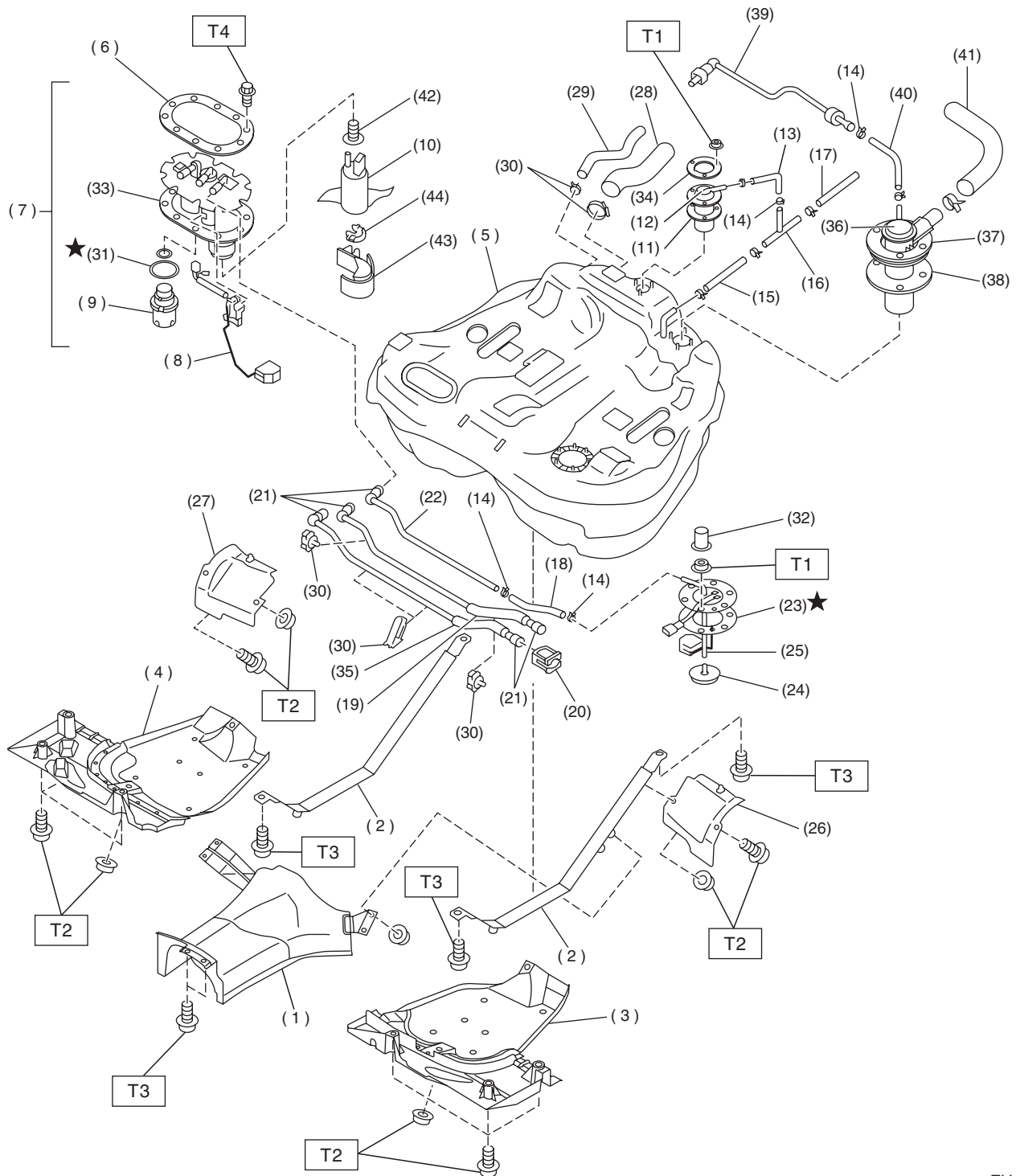
T1: 6.4 (0.65, 4.7)

T2: 24 (2.4, 17.4)

GENERAL DESCRIPTION

FUEL INJECTION (FUEL SYSTEMS)

4. FUEL TANK



FU-02002

GENERAL DESCRIPTION

FUEL INJECTION (FUEL SYSTEMS)

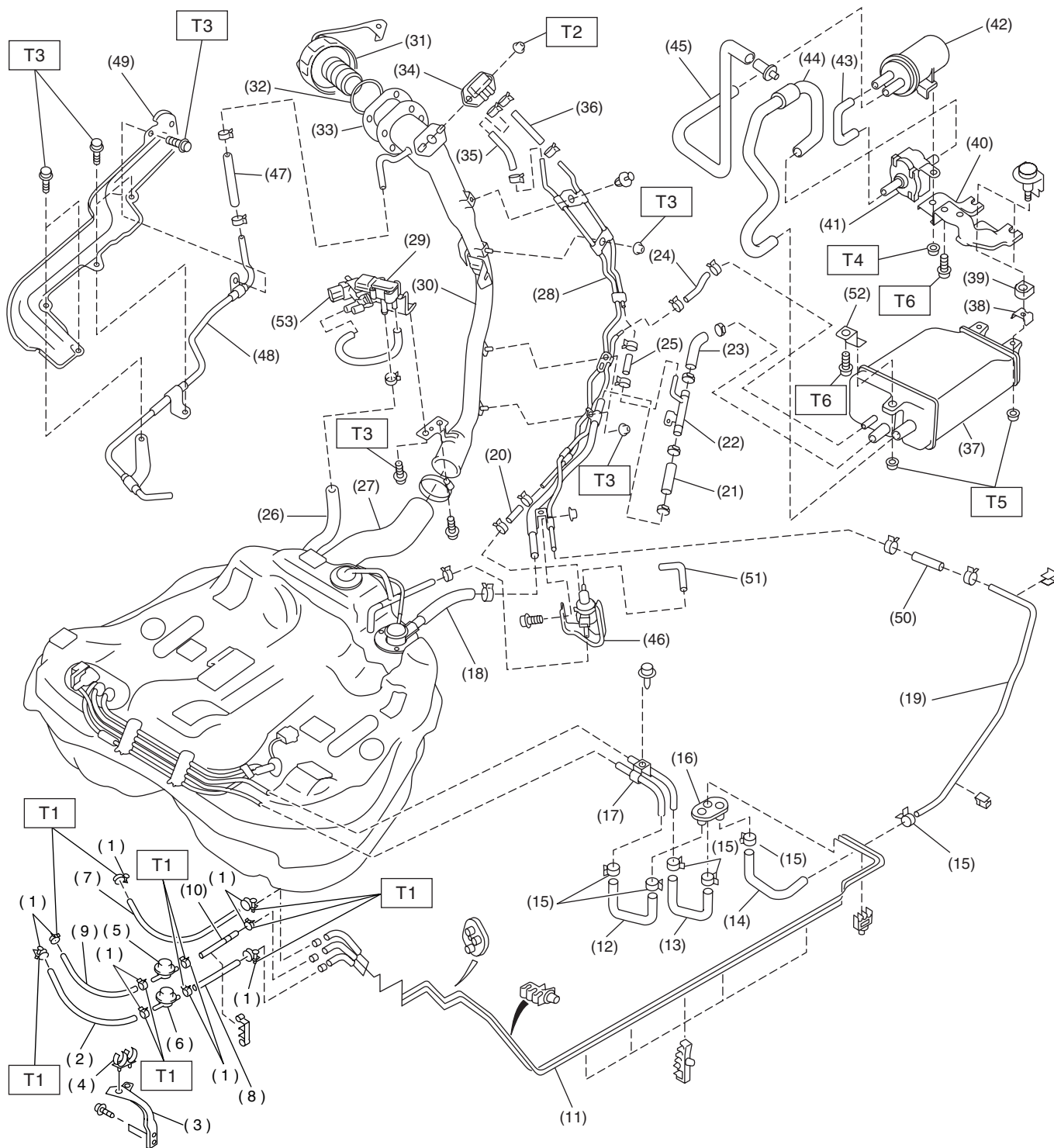
(1) Heat sealed cover	(18) Jet pump hose	(35) Fuel delivery tube
(2) Fuel tank band	(19) Fuel return tube	(36) Vent valve
(3) Protector LH (Front)	(20) Retainer	(37) Vent valve plate
(4) Protector RH (Front)	(21) Quick connector	(38) Vent valve gasket
(5) Fuel tank	(22) Jet pump tube	(39) Evaporation tube
(6) Fuel pump plate	(23) Fuel sub level sensor gasket	(40) Evaporation hose D
(7) Fuel pump ASSY	(24) Jet pump filter	(41) Air vent hose
(8) Fuel level sensor	(25) Fuel sub level sensor	(42) Seal
(9) Fuel filter	(26) Protector LH (Rear)	(43) Fuel pump holder
(10) Fuel pump	(27) Protector RH (Rear)	(44) Grommet
(11) Fuel cut valve gasket	(28) Fuel filler hose	
(12) Fuel cut valve	(29) Fuel tank pressure sensor hose	
(13) Evaporation hose A	(30) Clamp	
(14) Clip	(31) Gasket	
(15) Evaporation hose C	(32) Cap	
(16) Joint pipe	(33) Gasket	
(17) Evaporation hose B	(34) Fuel cut valve plate	

Tightening torque: N-m (kgf-m, ft-lb)**T1: 4.4 (0.45, 3.3)****T2: 18 (1.8, 13.0)****T3: 33 (3.4, 25)****T4: 5.9 (0.6, 4.3)**

GENERAL DESCRIPTION

FUEL INJECTION (FUEL SYSTEMS)

5. Fuel Line



FU-02584

GENERAL DESCRIPTION

FUEL INJECTION (FUEL SYSTEMS)

(1) Clamp	(23) Evaporation hose I	(45) Drain filter hose B
(2) Fuel delivery hose A	(24) Evaporation hose J	(46) Pressure control solenoid valve
(3) Bracket	(25) Evaporation hose K	(47) Evaporation hose N
(4) Clamp	(26) Fuel tank pressure sensor hose	(48) Evaporation pipe C
(5) Fuel damper (return)	(27) Fuel filler hose	(49) Pipe protector
(6) Fuel damper (delivery)	(28) Evaporation pipe B	(50) Evaporation hose O
(7) Evaporation hose F	(29) Fuel tank pressure sensor	(51) Pressure control solenoid valve hose
(8) Fuel delivery hose B	(30) Fuel filler pipe	(52) Canister bracket (front)
(9) Fuel return hose A	(31) Fuel filler cap	(53) Fuel tank sensor control valve
(10) Fuel return hose B	(32) Ring B	
(11) Fuel pipe ASSY	(33) Packing	
(12) Fuel delivery hose C	(34) Shut valve	
(13) Fuel return hose C	(35) Evaporation hose L	
(14) Evaporation hose G	(36) Evaporation hose M	
(15) Clamp	(37) Canister	
(16) Grommet	(38) Canister lower bracket	
(17) Fuel pipe ASSY	(39) Cushion rubber	
(18) Air vent hose A	(40) Canister upper bracket	
(19) Evaporation pipe A	(41) Drain valve	
(20) Evaporation hose H	(42) Drain filter	
(21) Air vent hose B	(43) Drain filter hose A	
(22) Air vent pipe	(44) Drain valve hose	

Tightening torque: N-m (kgf-m, ft-lb)

T1: 1.5 (0.15, 1.1)

T2: 4.5 (0.46, 3.3)

T3: 7.5 (0.76, 5.5)

T4: 18 (1.8, 13.0)

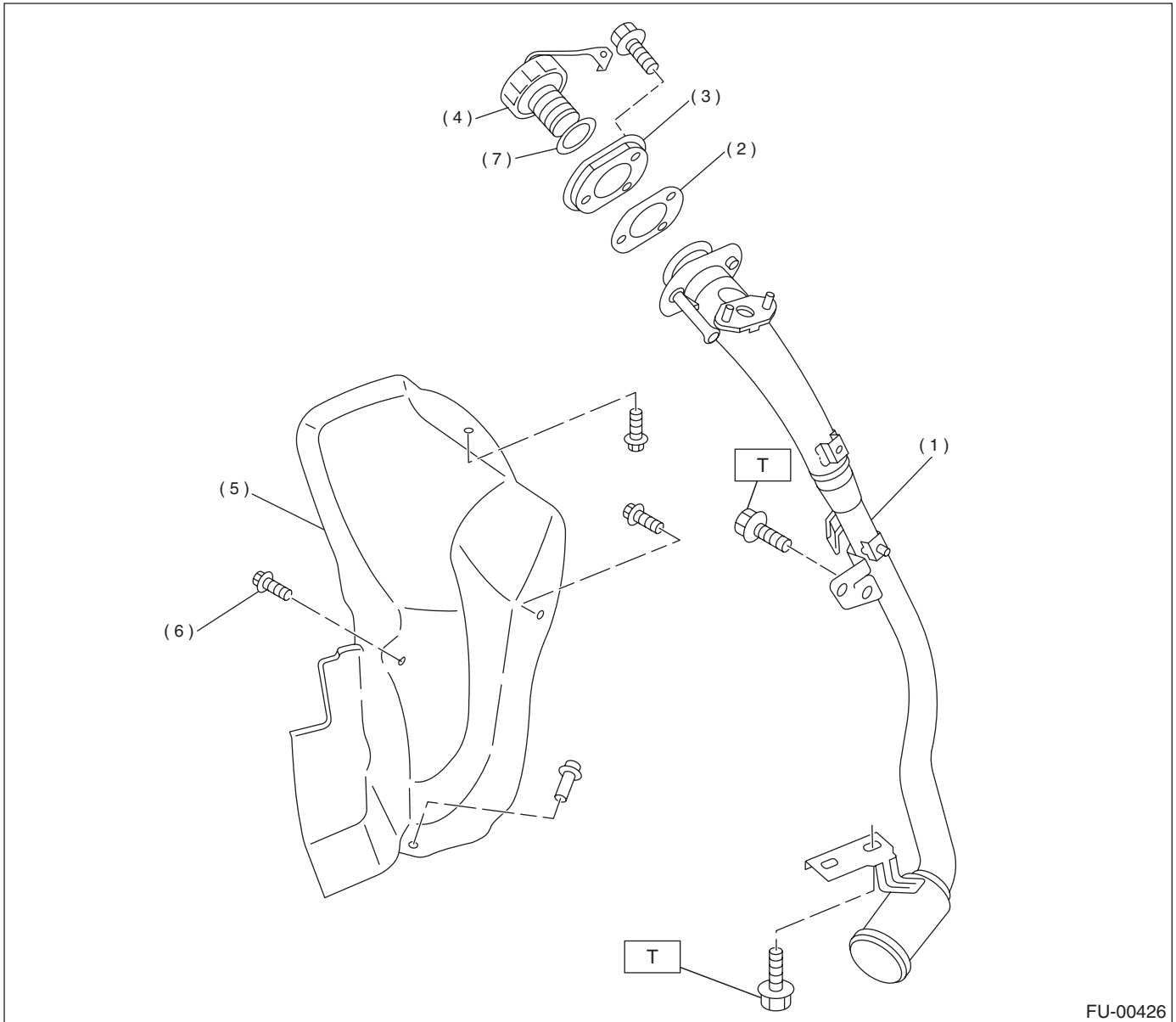
T5: 23 (2.3, 16.6)

T6: 33 (3.4, 25)

GENERAL DESCRIPTION

FUEL INJECTION (FUEL SYSTEMS)

6. Fuel Filler Pipe



FU-00426

- (1) Fuel filler pipe ASSY
- (2) Filler pipe packing
- (3) Filler ring
- (4) Filler cap
- (5) Filler pipe protector
- (6) Clip
- (7) Ring B

Tightening torque: N·m (kgf-m, ft-lb)

T: 7.5 (0.75, 5.4)

GENERAL DESCRIPTION

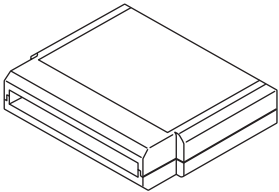

FUEL INJECTION (FUEL SYSTEMS)

C: CAUTION

- Wear working clothing, including a cap, protective goggles, and protective shoes during operation.
- Remove contamination including dirt and corrosion before removal, installation or disassembly.
- Keep the disassembled parts in order and protect them from dust or dirt.
- Before removal, installation or disassembly, be sure to clarify the failure. Avoid unnecessary removal, installation, disassembly, and replacement.

- Be careful not to burn your hands, because each part on the vehicle is hot after running.
- Be sure to tighten fasteners including bolts and nuts to the specified torque.
- Place shop jacks or safety stands at the specified points.
- Before disconnecting electrical connectors of sensors or units, be sure to disconnect negative terminal from battery.
- Place "NO FIRE" signs near the working area.
- Be careful not to spill fuel on the floor.

D: PREPARATION TOOL

ILLUSTRATION	TOOL NUMBER	DESCRIPTION	REMARKS
 <p>ST24082AA260</p>	24082AA260 (New adopted tool)	CARTRIDGE	Troubleshooting for electrical system.
 <p>ST22771AA030</p>	22771AA030	SELECT MONITOR KIT	Troubleshooting for electrical systems.