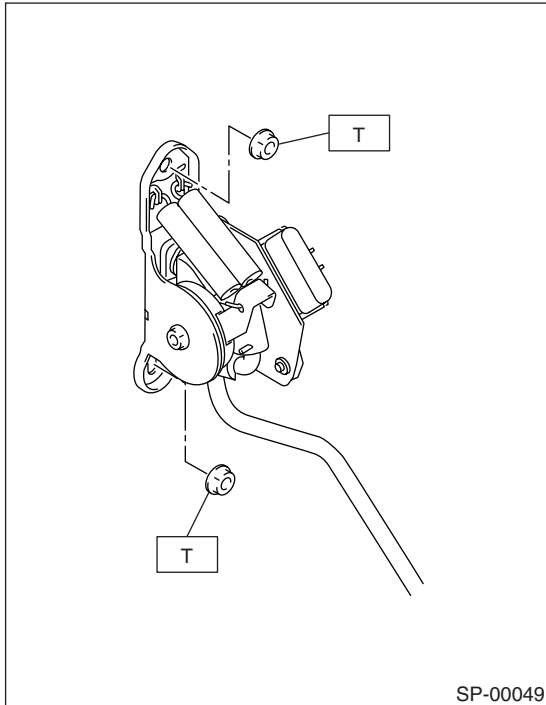


2. Accelerator Pedal

A: REMOVAL

- 1) Disconnect ground cable from battery.
- 2) Disconnect the connector.
- 3) Remove the nuts which securing accelerator pedal assembly.



B: INSTALLATION

Install in the reverse order of removal.

Tightening torque:

18 N·m (1.8 kgf-m, 13.0 ft-lb)

C: DISASSEMBLY

NOTE:

Accelerator pedal for model with electronic throttle control system cannot be disassembled.

ACCELERATOR PEDAL

SPEED CONTROL SYSTEMS

MEMO: