

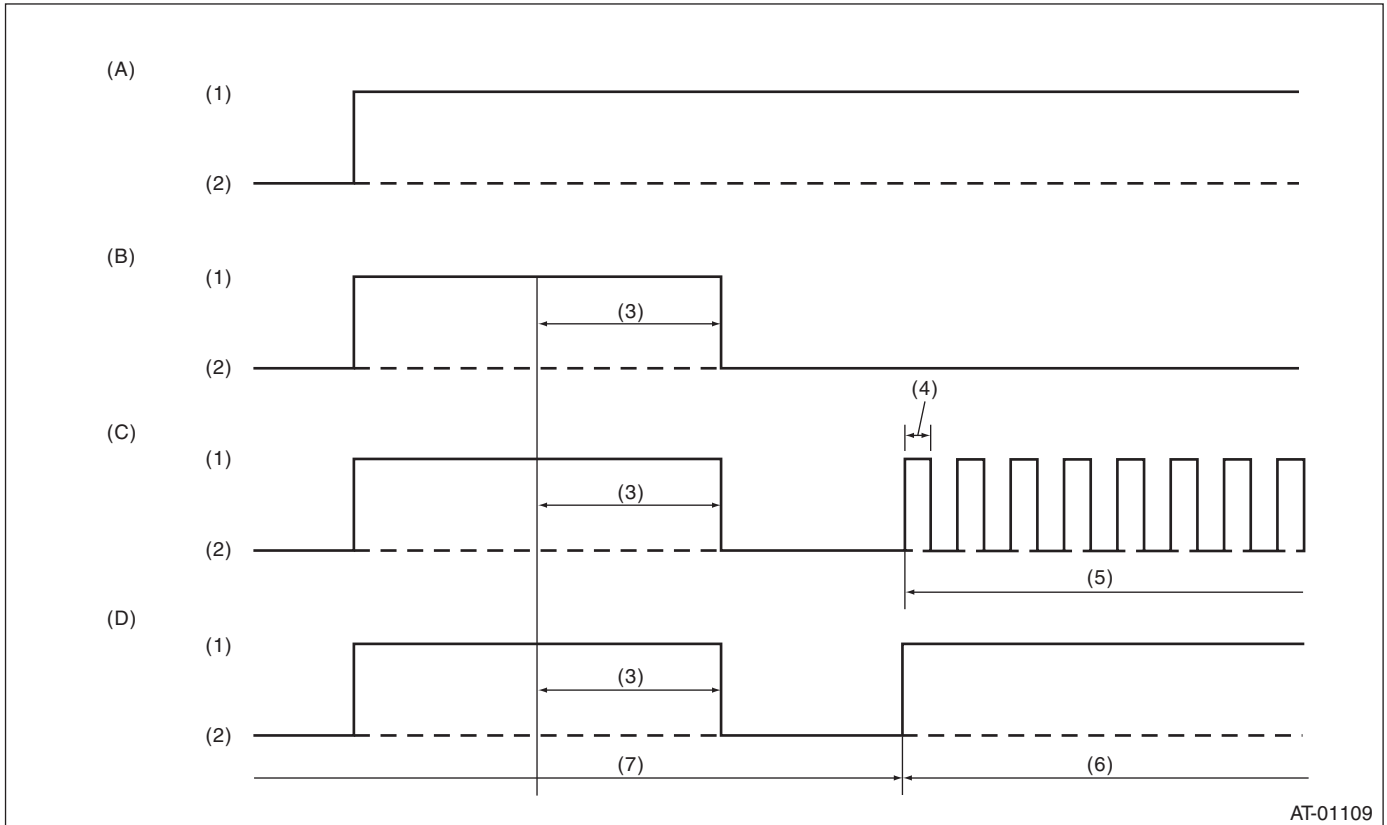
“AT OIL TEMP” WARNING LIGHT DISPLAY

AUTOMATIC TRANSMISSION (DIAGNOSTICS)

10. “AT OIL TEMP” Warning Light Display

A: INSPECTION

When any on-board diagnostics item is malfunctioning, the display on AT OIL TEMP warning light blinks from the time malfunction is detected after starting the engine until ignition switch is turned to OFF. The malfunctioning part or unit can be determined by a DTC during on-board diagnostics operation. Problems which occurred previously can also be identified through the memory function. If the AT OIL TEMP warning light does not show a problem (although a problem is occurring), the problem can be determined by checking the performance characteristics of each sensor using select monitor. The AT OIL TEMP warning light signal is as shown in the figure.



AT-01109

(A) Ignition switch (engine OFF)

(B) Normal (engine ON)

(C) Faulty (engine ON)

(D) Normal (ATF temperature is high.)

(1) ON

(4) 0.25 sec.

(6) ATF temperature (High)

(2) OFF

(5) Blink

(7) ATF temperature (Low)

(3) 2 sec.