

GENERAL DESCRIPTION

CONTROL SYSTEMS

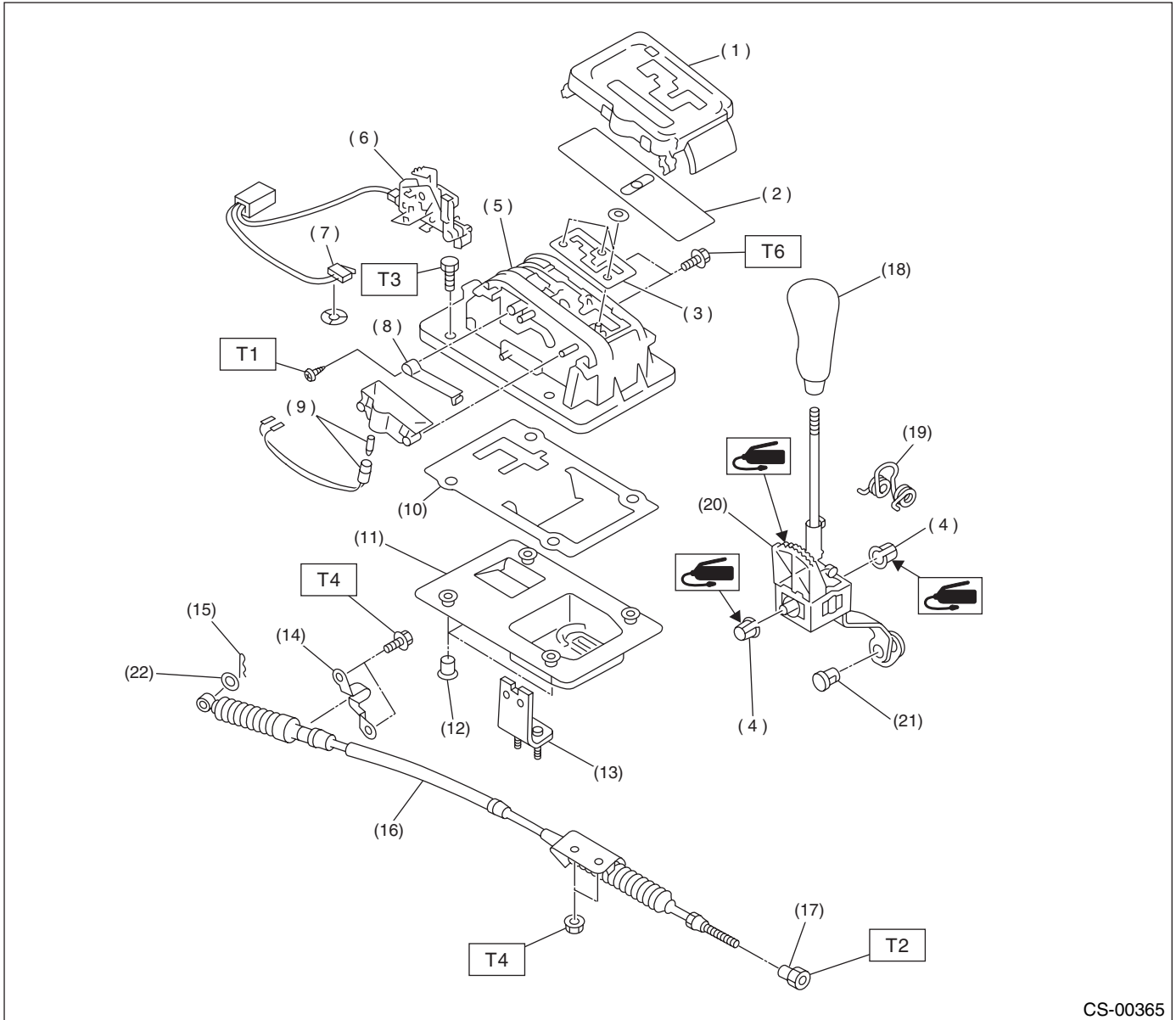
1. General Description

A: SPECIFICATIONS

Item	Specification
Swing torque of rod against MT gear shift lever N (kgf, lb)	3.7 (0.38, 0.84) or less

B: COMPONENT

1. AT SELECT LEVER (EXCEPT SPORT SHIFT MODEL)



CS-00365

- | | | |
|-------------------------|------------------------|-------------------|
| (1) Indicator cover | (11) Boot | (21) Bushing ASSY |
| (2) Blind | (12) Spacer | (22) Washer |
| (3) Cushion | (13) Cable bracket | |
| (4) Bushing | (14) Cable clamp | |
| (5) Plate | (15) Snap pin | |
| (6) Solenoid ASSY | (16) Selector cable | |
| (7) "P" position switch | (17) Nut A | |
| (8) Detent spring | (18) Grip | |
| (9) Indicator bulb | (19) Spring | |
| (10) Plate | (20) Select lever ASSY | |

Tightening torque: N·m (kgf·m, ft·lb)

T1: 4.9 (0.50, 3.6)

T2: 7.5 (0.76, 5.5)

T3: 13 (1.3, 9.4)

T4: 18 (1.8, 13.0)

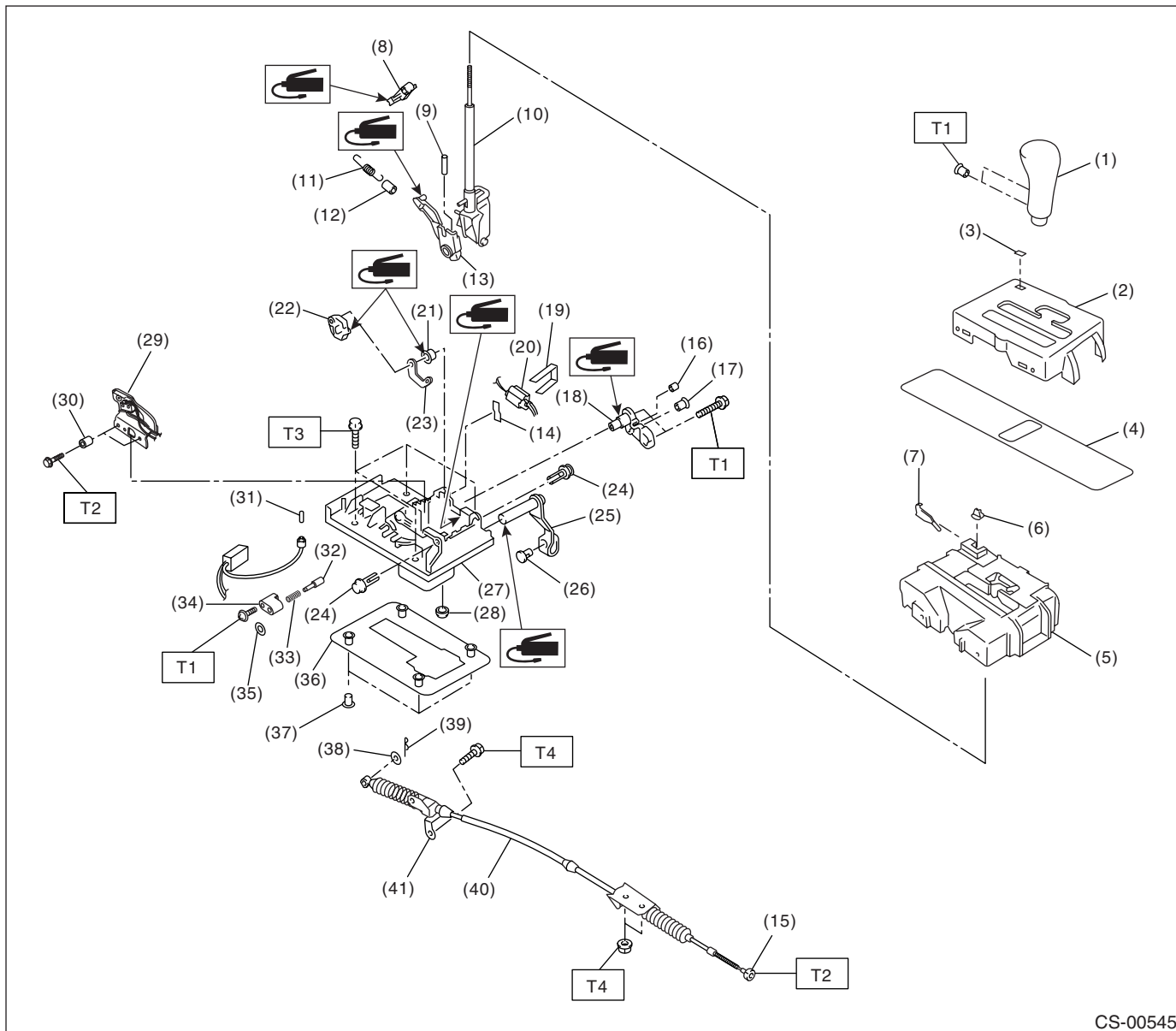
T5: 33 (3.4, 25)

T6: 51 (5.2, 38)

GENERAL DESCRIPTION

CONTROL SYSTEMS

2. AT SELECT LEVER (SPORT SHIFT MODEL)



CS-00545

GENERAL DESCRIPTION

CONTROL SYSTEMS

(1) Grip	(17) Bushing	(33) Spring
(2) Indicator cover	(18) Lock plate B	(34) Bushing
(3) Cover	(19) Clamp	(35) Clip
(4) Blind	(20) Shift lock solenoid	(36) Packing
(5) Guide plate	(21) Bushing	(37) Spacer
(6) Button	(22) Lock plate A	(38) Washer
(7) Spring	(23) Lock plate C	(39) Snap pin
(8) Detent arm	(24) Clip	(40) Select cable
(9) Spring pin	(25) Arm	(41) Cable lamp
(10) Lever ASSY	(26) Bushing ASSY	
(11) Detent spring	(27) Base plate ASSY	
(12) Tube	(28) Grommet	
(13) Arm bracket	(29) Bracket guide ASSY	
(14) Cushion	(30) Spacer	
(15) Nut A	(31) Indicator bulb	
(16) Cushion	(32) Rod	

Tightening torque: N·m (kgf-m, ft-lb)

T1: 2.0 (0.2, 1.4)

T2: 7.5 (0.76, 5.5)

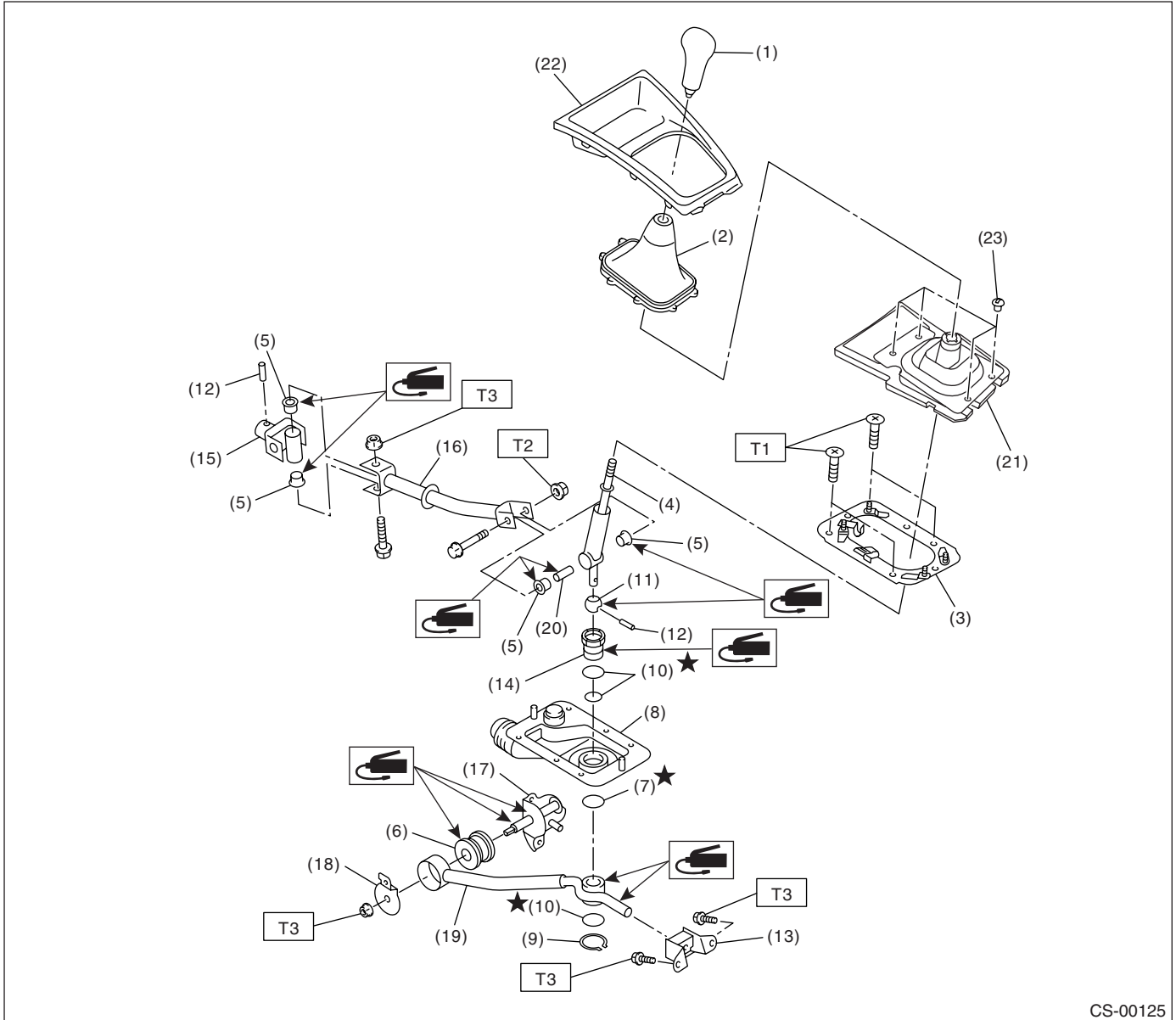
T3: 13 (1.3, 9.4)

T4: 18 (1.8, 13.0)

GENERAL DESCRIPTION

CONTROL SYSTEMS

3. MT GEAR SHIFT LEVER



CS-00125

- | | | |
|---------------------|---------------------|------------------------------|
| (1) Gear shift knob | (10) O-ring | (19) Stay |
| (2) Console boot | (11) Bushing A | (20) Spacer |
| (3) Plate ASSY | (12) Spring pin | (21) Boot and insulator ASSY |
| (4) Lever | (13) Cushion rubber | (22) Front cover |
| (5) Bushing | (14) Bushing B | (23) Clamp |
| (6) Bushing | (15) Joint | |
| (7) Lock wire | (16) Rod | |
| (8) Boot | (17) Bracket | |
| (9) Snap ring | (18) Washer | |

Tightening torque: N·m (kgf·m, ft·lb)

T1: 7.5 (0.76, 5.5)

T2: 12 (1.2, 8.7)

T3: 18 (1.8, 13.0)

C: CAUTION

- Wear working clothing, including a cap, protective goggles, and protective shoes during operation.
- Remove contamination including dirt and corrosion before removal, installation or disassembly.
- Keep the disassembled parts in order and protect them from dust or dirt.
- Before removal, installation or disassembly, be sure to clarify the failure. Avoid unnecessary removal, installation, disassembly, and replacement.
- Use SUBARU genuine grease etc. or the equivalent. Do not mix grease etc. with that of another grade or from other manufacturers.
- Be sure to tighten fasteners including bolts and nuts to the specified torque.
- Place shop jacks or safety stands at the specified points.
- Apply grease onto sliding or revolution surfaces before installation.
- Before installing O-rings or snap rings, apply sufficient amount of grease to avoid damage and deformation.
- Before securing a part on a vise, place cushioning material such as wood blocks, aluminum plate, or shop cloth between the part and the vise.
- Before disconnecting electrical connectors, be sure to disconnect the ground cable from battery.