

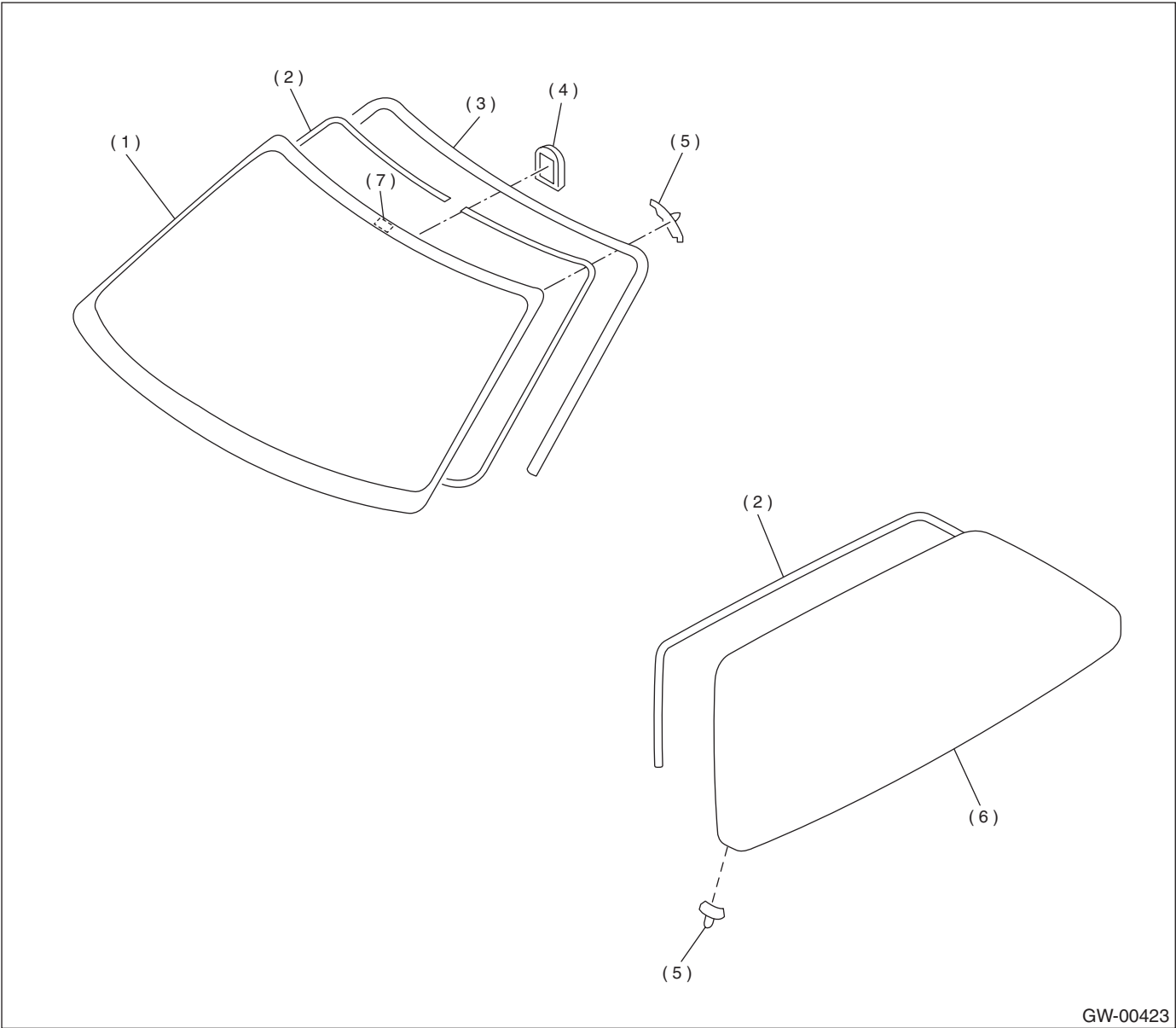
GENERAL DESCRIPTION

GLASS/WINDOWS/MIRRORS

1. General Description

A: COMPONENT

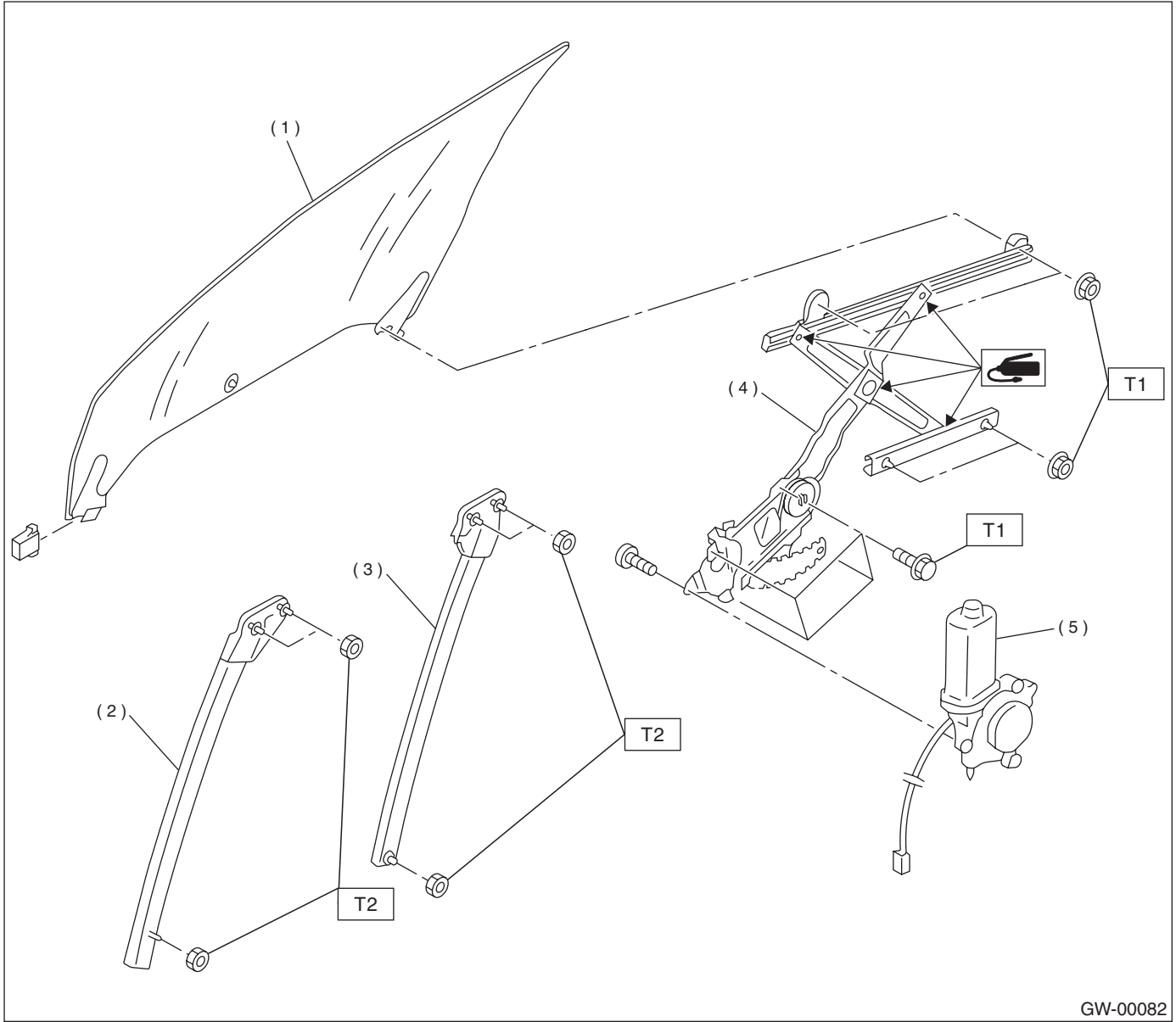
1. FIXED GLASS



GW-00423

- (1) Windshield glass
- (2) Dam rubber
- (3) Molding
- (4) Rearview mirror mount
- (5) Locate pin
- (6) Rear window glass
- (7) Fastener

2. FRONT DOOR GLASS



- (1) Glass
- (2) Door sash (Front)
- (3) Door sash (Rear)
- (4) Regulator ASSY

- (5) Motor ASSY

Tightening torque: N·m (kgf·m, ft·lb)

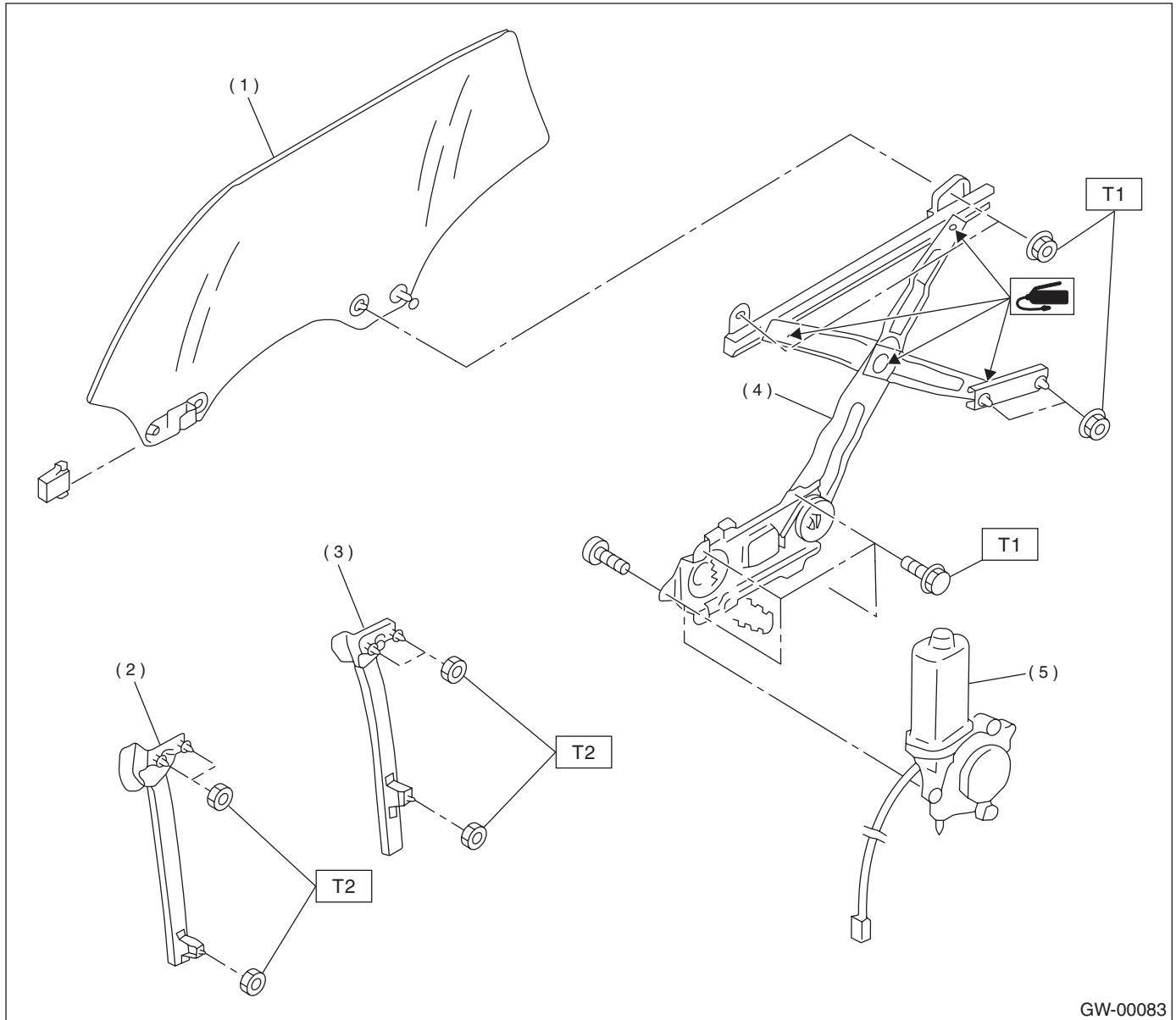
T1: 7.35 (0.75, 5.4)

T2: 14 (1.4, 10.1)

GENERAL DESCRIPTION

GLASS/WINDOWS/MIRRORS

3. REAR DOOR GLASS



- (1) Glass
- (2) Door sash (Front)
- (3) Door sash (Rear)
- (4) Regulator ASSY

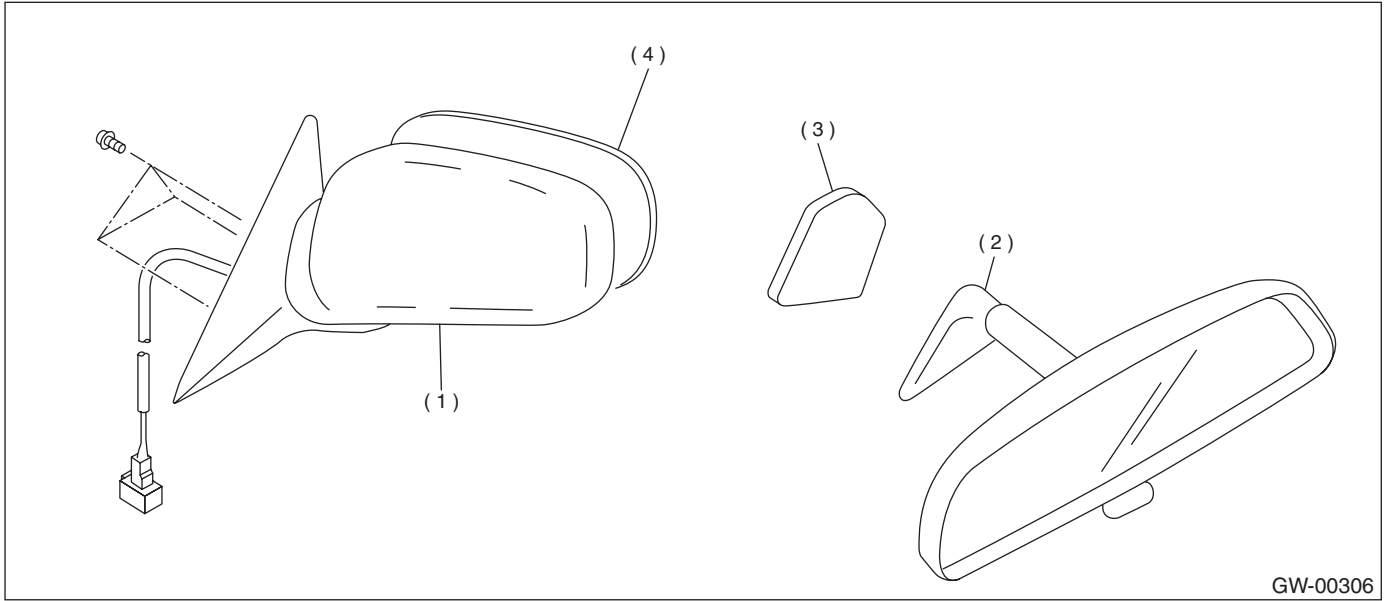
- (5) Motor ASSY

Tightening torque: N·m (kgf·m, ft·lb)

T1: 7.35 (0.75, 5.4)

T2: 14 (1.4, 10.1)

4. MIRRORS



- (1) Outer mirror
- (2) Inner rearview mirror

- (3) Mount
- (4) Mirror

GW-00306

GENERAL DESCRIPTION

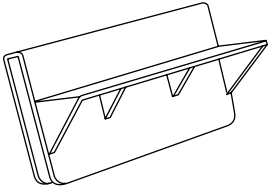
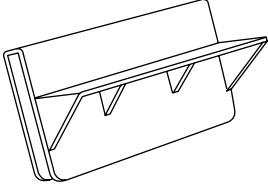
GLASS/WINDOWS/MIRRORS

B: CAUTION

- When electrical connectors are disconnected, always conduct an operational check after connecting them again.
- Avoid impact and damage to the glass.

C: PREPARATION TOOL

1. SPECIAL TOOLS

ILLUSTRATION	TOOL NUMBER	DESCRIPTION	REMARKS
 ST61299AE000	61299AE000	SPACER	Used for adjusting position of upper edge of front door glass. [For glass thickness 5 mm (0.197 in)]
 ST61299AE010	61299AE010	SPACER	Used for adjusting position of upper edge of rear door glass. [For glass thickness 4 mm (0.157 in)]

2. GENERAL TOOLS

TOOL NAME	REMARKS
Circuit Tester	Used for checking voltage and continuity.
Piano Wire	Used for window glass removal.
Windshield Knife	Used for window glass removal.