

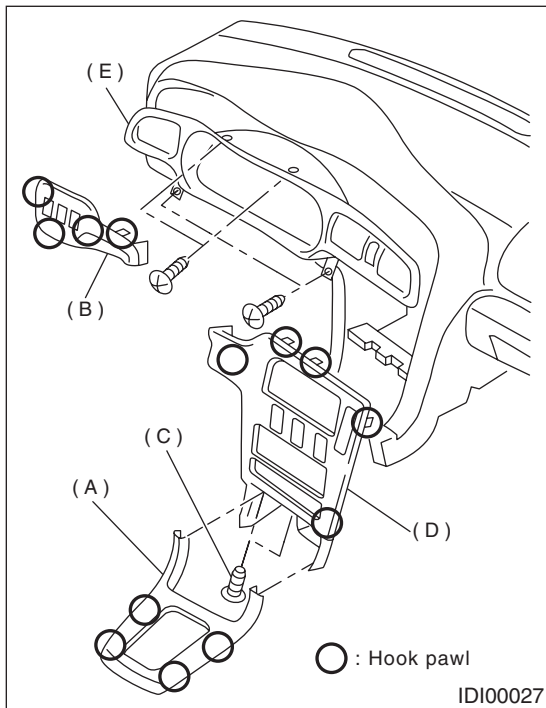
COMBINATION METER ASSEMBLY

INSTRUMENTATION/DRIVER INFO

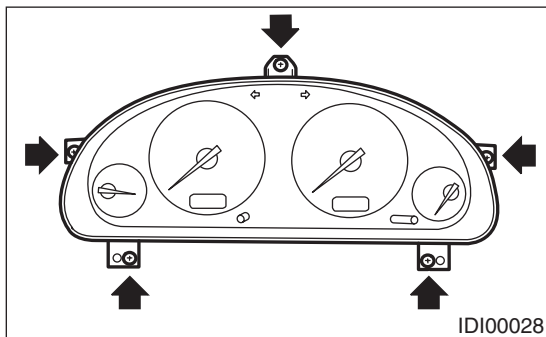
3. Combination Meter Assembly

A: REMOVAL

- 1) Disconnect ground cable from battery.
- 2) Set tilt steering at the lowest position.
- 3) Disconnect each electrical connector to remove front cover (A) and switch panel (B).
- 4) Loosen screws (C) to remove center panel (D).
- 5) Remove meter visor (E).



- 6) Remove screws of combination meter to pull out the meter toward you.
- 7) Remove connector in the upper area of combination meter to remove meter.



CAUTION:

- Be careful not to damage meter or instrument panel.
- Pay particular attention to avoid damaging the meter glass.

B: INSTALLATION

Install in the reverse order of removal.

CAUTION:

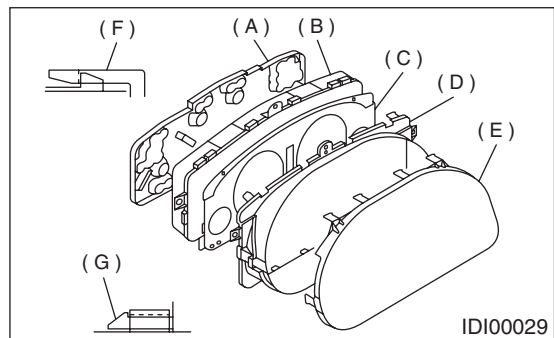
- Make sure that electrical connector is connected securely.
- Make sure that each meter operates normally.

C: DISASSEMBLY

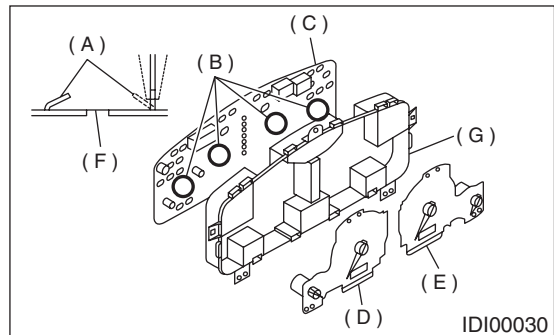
CAUTION:

Use gloves to avoid damage and getting fingerprints on the glass surface and meter surfaces.

- 1) Disengage claw (F) to remove case (B) from back cover (A).
- 2) Disengage claw (G) to remove meter glass (E), reflector (D), and window plate (C) from inner case.



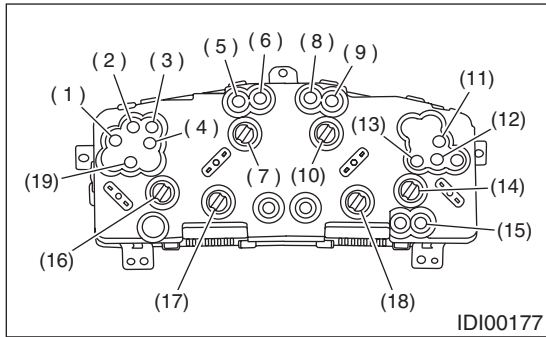
- 3) Pull up claw (A) in portion (B) of printed circuit (C) with combination pliers. Push out speedometer assembly (D) and tachometer assembly (E) using hole (F).
- 4) Pull up claw in the center of printed circuit (C), and remove printed circuit from case (G).



COMBINATION METER ASSEMBLY

INSTRUMENTATION/DRIVER INFO

1. BULB REPLACEMENT



- (1) AT OIL TEMP
- (2) Oil pressure
- (3) Check engine
- (4) Charge
- (5) HI-beam
- (6) Turn RH
- (7) Tachometer
- (8) Turn LH
- (9) Brake
- (10) Speedometer
- (11) Airbag
- (12) ABS
- (13) AWD
- (14) Speedometer and fuel gauge
- (15) Low fuel
- (16) Tachometer and water temperature gauge
- (17) LCD
- (18) LCD
- (19) Curise set

D: ASSEMBLY

Assemble in the reverse order of disassembly.