

# REAR SEAT BELT

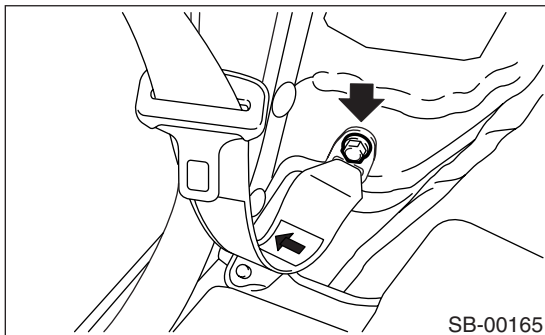
## SEAT BELT SYSTEM

### 4. Rear Seat Belt

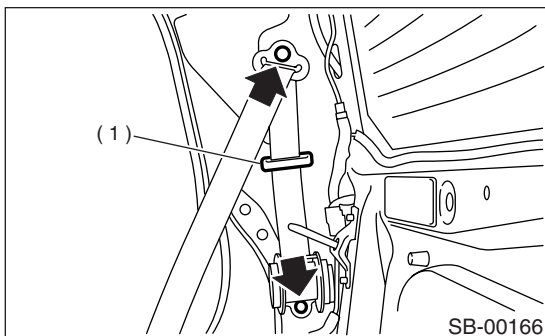
#### A: REMOVAL

##### 1. OUTER BELT

- 1) Remove rear pillar trim. <Ref. to EI-52, REMOVAL, Rear Pillar Trim.>
- 2) Remove lower anchor bolt.



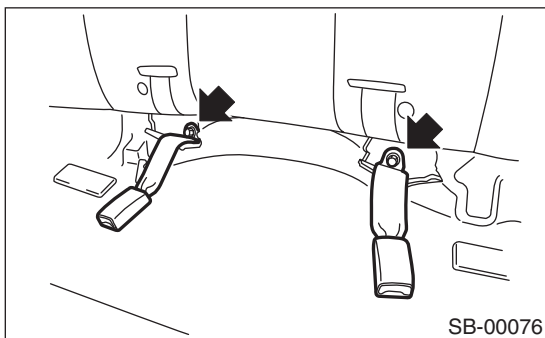
- 3) Remove webbing guide bolts, and then detach outer belt side.



(1) Webbing guide

##### 2. INNER BELT

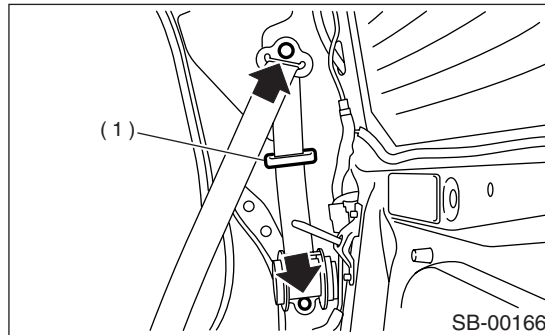
- 1) Pull up rear cushion.
- 2) Remove bolts, and then detach inner belt.



#### B: INSTALLATION

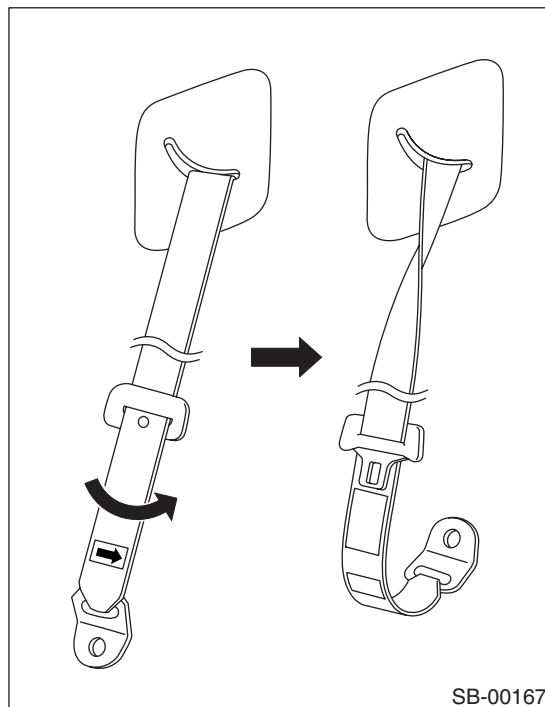
##### 1. OUTER BELT

- 1) Install webbing guide and bolts.

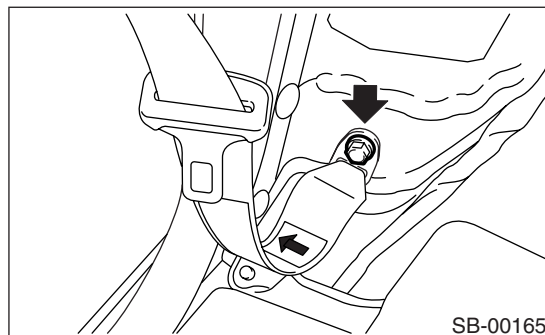


(1) Webbing guide

- 2) Twist seat belt in the direction indicated by the arrow on the seat belt label.



- 3) Install lower anchor bolt.



**CAUTION:**

**After installation, make sure that seat belts are smoothly extended and wound.**

## **2. INNER BELT**

Install in the reverse order of removal.

**CAUTION:**

**During installation, make sure that seat belts are not twisted.**

## **C: INSPECTION**

### **1. OUTER BELT**

Check for the following, and replace with new parts if necessary.

- Outer belt is deformed or damaged.
- Seat belt buckle is engaged improperly.

### **2. INNER BELT**

Check for the following, and replace with new parts if necessary.

- Inner belt is deformed or damaged.
- Seat belt buckle is engaged improperly.

# REAR SEAT BELT

SEAT BELT SYSTEM

---

**MEMO:**