

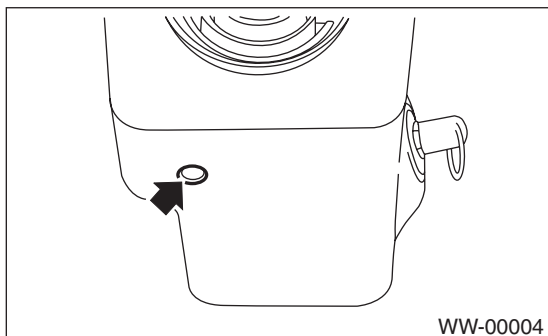
# COMBINATION SWITCH (WIPER)

## WIPER AND WASHER SYSTEMS

### 3. Combination Switch (Wiper)

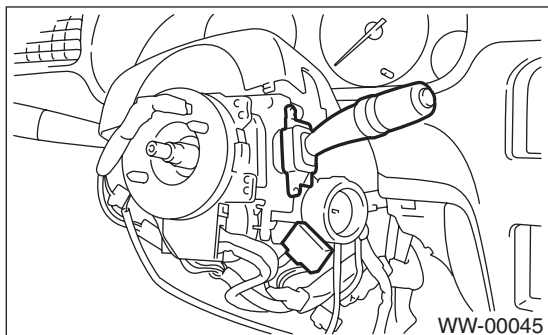
#### A: REMOVAL

1) Remove screw to remove a steering column cover.



2) Disconnect harness connectors from combination switches.

3) Remove screw to remove combination switch.

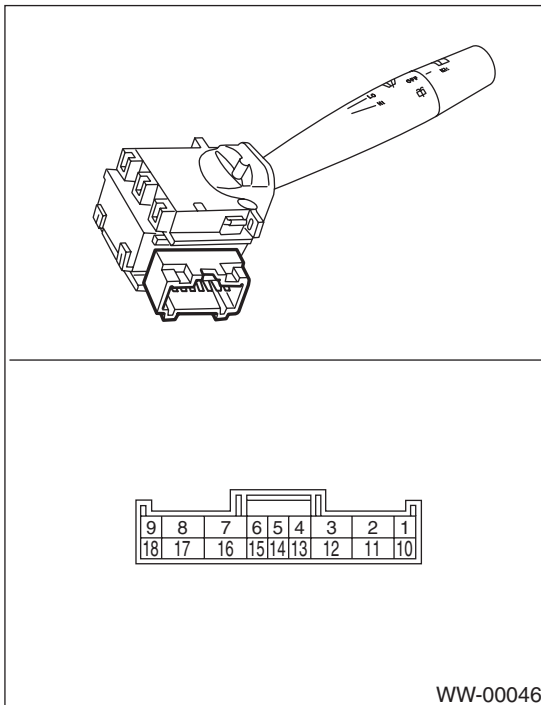


#### B: INSTALLATION

Install in the reverse order of removal.

#### C: INSPECTION

• Inspect the continuity between each connector terminal.



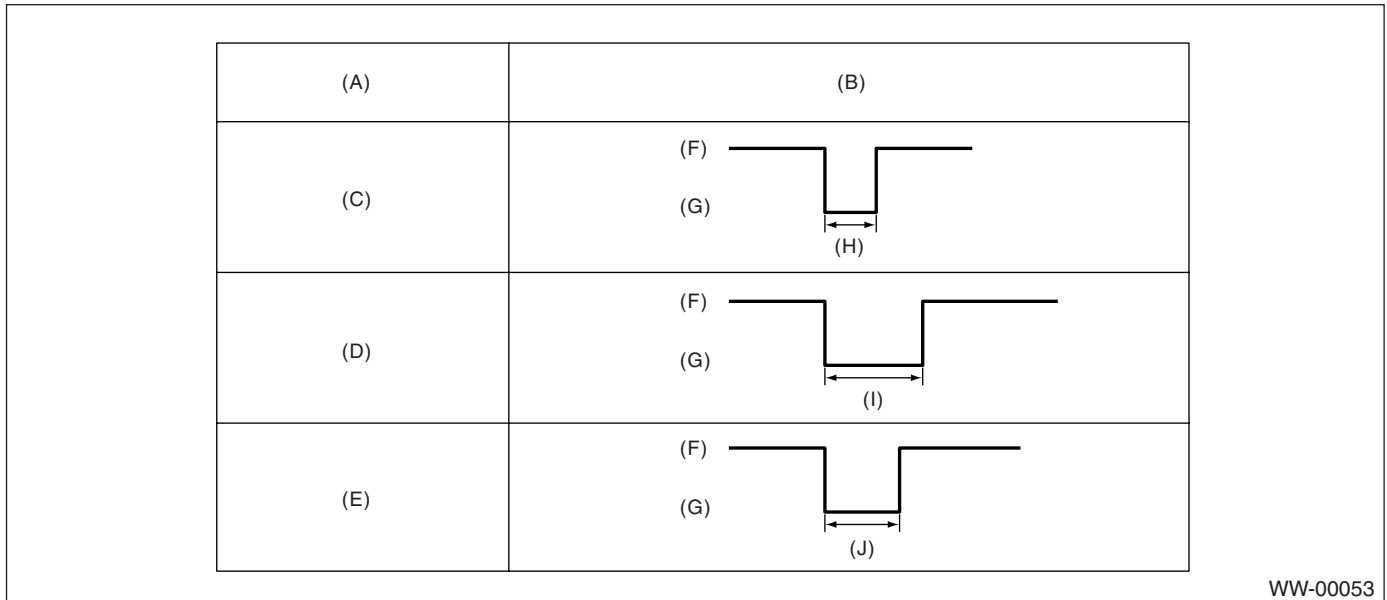
	Switch position	Terminal No.	Standard
FRONT	OFF	7 and 16	More than 1 MΩ
		7 and 17	
		8 and 17	
		2 and 11	
	INT	7 and 16	Less than 1 Ω
	LO	7 and 17	Less than 1 Ω
	HI	8 and 17	Less than 1 Ω
	Washer ON	2 and 11	Less than 1 MΩ

If continuity is not as specified, replace the switch.

# COMBINATION SWITCH (WIPER)

- Intermittent operation inspection

- 1) Turn the wiper switch to INT.
- 2) Adjust the intermittent control switch to MAX.
- 3) Apply battery voltage to switch terminals 17 and 2, and inspect the voltage of terminals 7 and 2. (Measure the voltage from after the second time the wiper stops.)



(A) Switch position

(B) Voltage

(C) MIN.

(D) MAX.

(E) Non-variable

(F) 12 V

(G) 0 V

(H) Approx. 2 sec.

(I)  $16 \pm 6$  sec.

(J)  $3 \pm 1$  sec.

If operation is not as specified, replace the switch.