

# IDENTIFICATION

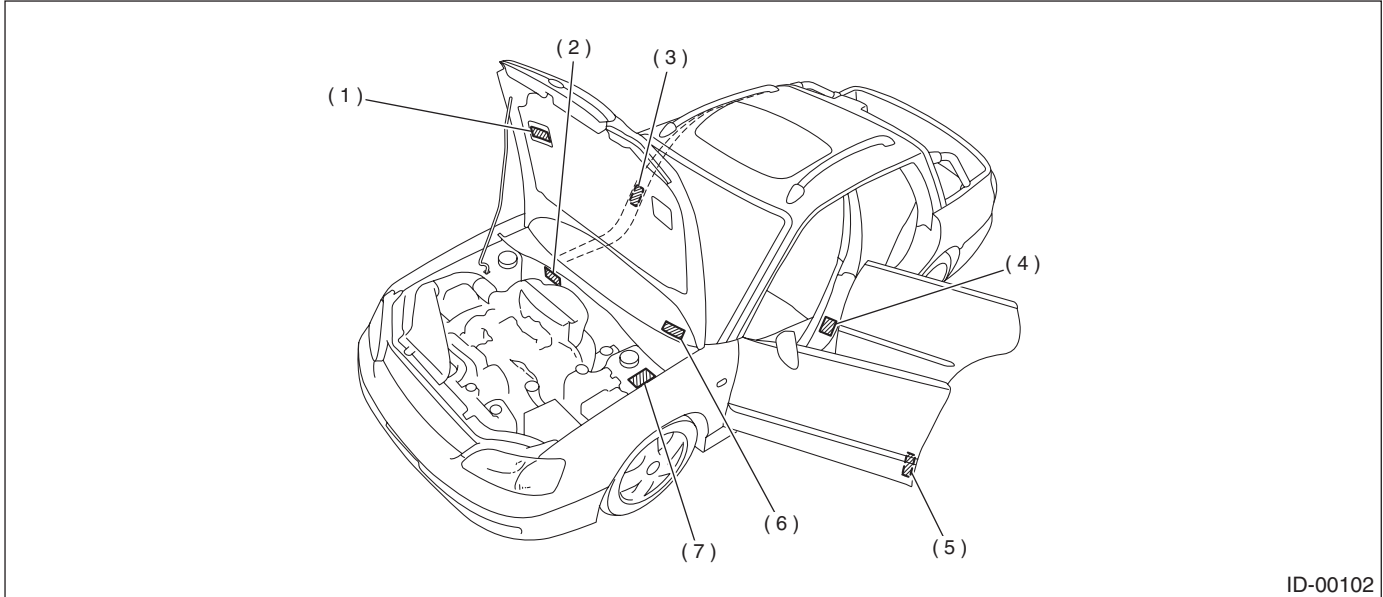
## IDENTIFICATION

### 1. Identification

#### A: IDENTIFICATION

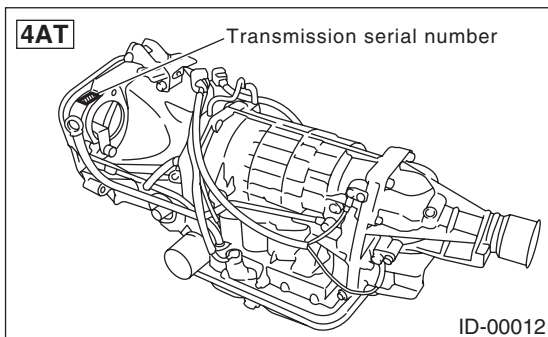
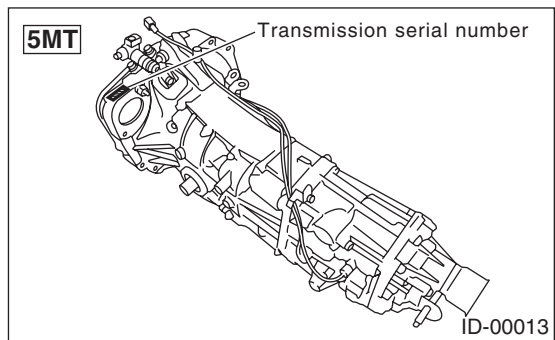
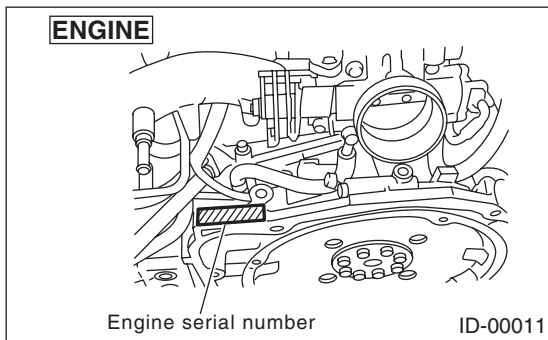
##### 1. IDENTIFICATION NUMBER AND LABEL LOCATIONS

The VIN (Vehicle Identification Numbers) is used to classify the vehicle.  
Positioning of the plate label for identification

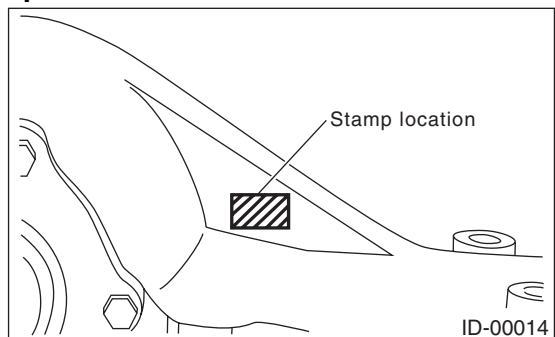


ID-00102

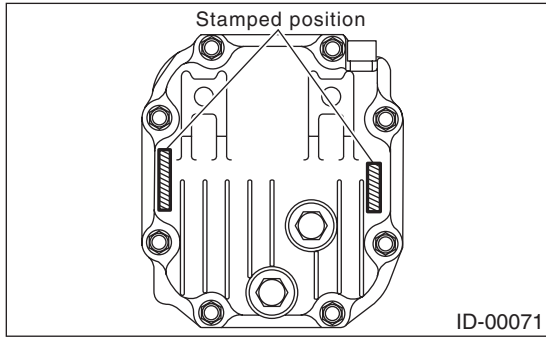
- |  |   |                        |
|--|---|------------------------|
| (1) Emission control and vacuum hose label | (4) Tire inflation pressure label                         | (7) Model number plate |
| (2) Vehicle identification number          | (5) FMVSS label (USA model)<br>CMVSS label (Canada model) |                        |
| (3) Radio noise label (Canada model)       | (6) Vehicle identification number plate                   |                        |



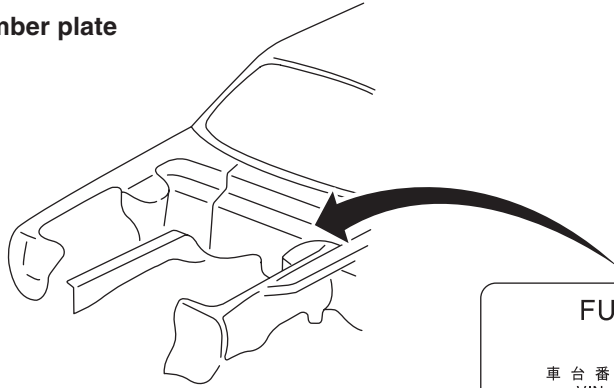
**Except non-TURBO AT models**



## Non-TURBO AT models



## Model number plate



FUJI HEAVY INDUSTRIES LTD.																																		
										型 式		<input type="text"/>	<input type="text"/>	<input type="text"/>	<input type="text"/>	<input type="text"/>	<input type="text"/>																	
車台番号												4	S	4	B	T	6	1	C	X	5	6	1	0	0	0	0	1						
VIN																																		
<input type="radio"/>	アプライトモデル										B	T	9	F	Y	E	J	オプションコード		E	0	<input type="radio"/>												
applied model																																		
トリムコード												4	1	0	エンジン型式										E	J	2	5	1	A	W	F	W	L
trim code																																		
外装飾コード												2	3	0	ミッション型式										T	Y	7	5	4	V	C	F	A	A
color code																																		
												transmission type																						

ID-00103

# IDENTIFICATION

## IDENTIFICATION

---

### 2. MEANING OF VIN

The meaning of the VIN is as follows:

- PICKUP

**]4S4BT61CX56100001[**

The starting and ending brackets ( ] [ ) are stop marks.

Digits	Code	Meaning	Details
1 to 3	4S4	Manufacturer body area	MPV, SIA made, For US/Canada
4	B	Car line	Legacy series
5	T	Body type	T: PICKUP
6	6	Displacement	6: 2.5 L AWD
7	1	Grade	1: BAJA 2: BAJA-S 3: BAJA-B
8	C	GVWR class	C: Class C (4,001 — 5,000 lb)
9	X	Check digit	0 — 9 and X
10	5	Model year	5: 2005MY 6: 2006MY
11	6	Transmission type	5: Full-time AWD 4-speed AT-SS 6: Full-time AWD 5-speed MT 7: Full-time AWD 4-speed AT
12 to 17	100001	Manufacture number	From 100001: PICKUP

# IDENTIFICATION

IDENTIFICATION

## 3. MODEL NUMBER PLATE

The model number plate indicates: the applied model, the option code, the trim code, the engine type, the transmission type, and the exterior color code. This information is helpful when placing orders for parts.

### BT9FYEJ

Digits	Code	Meaning	Details
1	B	Series	B: Legacy/OUTBACK
2	T	Body style	T: PICKUP
3	9	Engine displacement Drive system Suspension system	9: 2.5 L AWD
4	F	Model year	F: 2005MY (SIA made)
5	Y	Destination	Y: Left-hand drive for United States, Canada and Taiwan
6	E	Grade	E: BAJA F: BAJA S U: BAJA B
7	J	Transmission, fuel feed system	D: DOHC MPI Turbo MT center differential AWD J: SOHC MPI MT center differential AWD R: SOHC MPI 4-speed AT T: DOHC MPI Turbo 4-speed AT-SS

The engine and transmission type are as follows:

#### • Engine

### EJ251AWFWL

Digits	Code	Meaning	Details
1 and 2	EJ	Engine type	EJ: 4 cylinders
3 and 4	25	Displacement	25: 2.5 L
5	1	Fuel feed system	1: D-MPI SOHC-A phase-2 or -3 5: MPI-Turbo phase-2 or -3
6	A	Exhaust regulations	A: For states not using California emissions standards B: For USA
7	W	Transmission	W: AWD MT X: AWD AT
8 to 10	FWL	Detailed specifications	Used when ordering parts. See the parts catalog for details.

#### • Transmission

### TY754VCFAA

Digits	Code	Meaning	Details
1	T	Transmission	T: Transmission
2	Y	Transmission type	Y: Full-time AWD MT center differential V: Full-time AWD AT VTD Z: Full-time AWD AT MPT
3 and 4	75	Classification	75: MT 1A, 1B: AT
5	4	Series	4: 5th Generation Legacy
6	V	Transmission specifications	V: Full-time AWD 5-speed MT with viscous coupling center differential single range Z: Full-time AWD 4-speed AT with MPT M: Full-time AWD 4-speed AT with VTD (Direct control)
7	C	Mounted body	C: US 2.5 L SOHC B, H: US 2.5 L Turbo DOHC
8 to 10	FAA	Detailed specifications	Used when ordering parts. See the parts catalog for details.

# IDENTIFICATION

## IDENTIFICATION

---

### • Rear differential 1

#### VA1RFK (XJ)

Digits	Code	Meaning	Details
1	V	For AWD	V: AWD
2	A	Type	A: A type
3	1	Hypoid gear diameter	1: 152 dia. 2: 160 dia.
4	R	Installation position	R: Rear
5	F	Reduction gear ratio	E: 4.111 F: 4.444
6	K	Specification differences	K: Viscous LSD

### • Rear differential 2

#### T1

Code	Reduction gear ratio	LSD
J	4.111	Viscous R160
F	4.444	Viscous R160
XS	4.444	Viscous R152