

Specifications

Specifications	11-2
<i>Dimensions</i>	11-2
<i>Engine</i>	11-2
<i>Electrical system</i>	11-2
<i>Capacities</i>	11-2
<i>Tires</i>	11-3
<i>Wheel alignment</i>	11-3
Fuses and circuits	11-4
<i>Fuse panel located behind the coin tray</i>	11-4
<i>Fuse panel located in the engine compartment</i>	11-6
Bulb chart	11-7
Vehicle identification	11-8

Specifications

These specifications are subject to change without notice.

Dimensions

Overall length	175.2 in. (4,450 mm)
Overall width	68.3 in. (1,735 mm)
Overall height	62.8 in. (1,595 mm)
Ground clearance	7.5 in. (190 mm)
Front tread	58.1 in. (1,475 mm)
Rear tread	57.1 in. (1,450 mm)
Wheelbase	99.4 in. (2,525 mm)

Engine

Engine model	EJ25D
Engine type	Horizontally opposed, liquid cooled 4 cylinder, 4 stroke gasoline engine
Engine displacement	149.9 cu in. (2,457 cc)
Bore	3.92 in. (99.5 mm)
Stroke	3.11 in. (79.0 mm)
Compression ratio	9.7 : 1
Firing order	1 - 3 - 2 - 4

Electrical system

Battery	
Type	MT: 55D23L, AT: 75D23L
Reserve capacity	MT: 99 min., AT: 118 min.
Cold cranking ampere	MT: 356 amp., AT: 520 amp.
Alternator	12V - 75A
Spark plugs	PFR5B-11 (NGK), RC10PYP4A (Champion)
Spark plug gap	0.039 to 0.043 in. (1.0 to 1.1 mm)

Capacities

Fuel tank	15.9 US gal (60 liter, 13.2 Imp gal)
Engine oil	4.7 US qt (4.5 liter, 3.9 Imp qt)
Transmission oil	3.7 US qt (3.5 liter, 3.1 Imp qt)
Automatic transmission fluid	10.0 US qt (9.5 liter, 8.4 Imp qt)

AT differential gear oil	1.3 US qt (1.2 liter, 1.1 Imp qt)
AWD rear differential gear oil	0.8 US qt (0.8 liter, 0.7 Imp qt)
Power steering fluid	0.7 US qt (0.7 liter, 0.6 Imp qt)
Engine coolant	6.6 US qt (6.2 liter, 5.5 Imp qt)

Tires

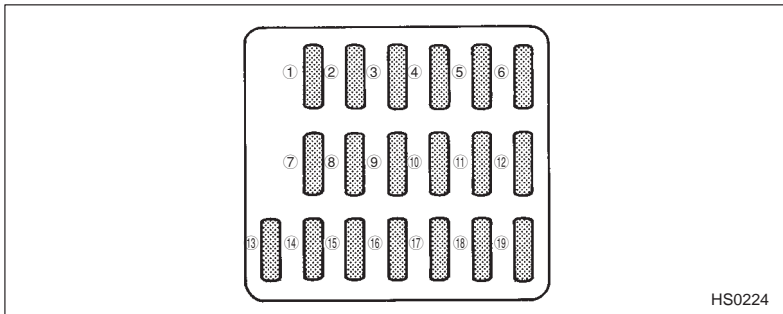
Type	Steel belted radial, Tubeless
Size	P205/70 R15 95S P215/60 R16 94H
Pressure	Front
	(light load) 29 psi (200 kPa, 2.0 kg/cm ²)
	(full load) 29 psi (200 kPa, 2.0 kg/cm ²)
	Rear
	(light load) 26 psi (180 kPa, 1.8 kg/cm ²)
	(full load) 36 psi (250 kPa, 2.5 kg/cm ²)
Trailer towing	Front 29 psi (200 kPa, 2.0 kg/cm ²)
	Rear 41 psi (280 kPa, 2.8 kg/cm ²)
Wheel size	15 x 6JJ, 16 x 6 ¹ / ₂ JJ

Wheel alignment

Toe	Front	0 ± 0.12 in. (0 ± 3 mm)
	Rear	0 ± 0.12 in. (0 ± 3 mm)
Camber	Front	0° 20'
	Rear	-0°35'

Fuses and circuits

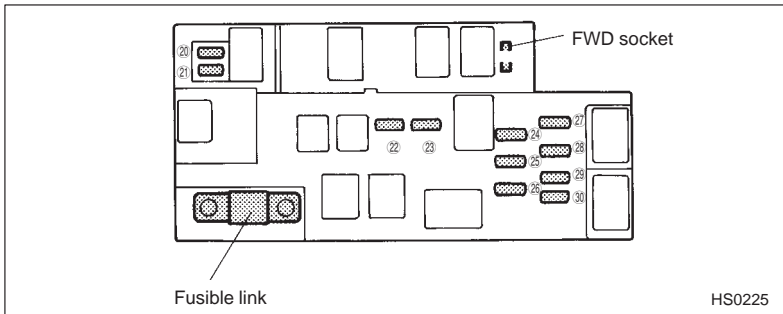
■ Fuse panel located behind the coin tray



Fuse panel	Fuse rating	Circuit
1	15A	● Heater fan
2	15A	● Heater fan
3	15A	● Power door lock
4	20A	● Front accessory power socket ● Cigarette lighter ● Remote controlled rear view mirrors
5	10A	● Tail light ● Parking light
6	15A	● SRS AIRBAG
7	15A	● Fog light
8	20A	● ABS solenoid
9	15A	● Radio ● Clock

Fuse panel	Fuse rating	Circuit
10	Empty	
11	15A	<ul style="list-style-type: none">● Engine ignition system● SRS AIRBAG
12	10A	<ul style="list-style-type: none">● Illumination brightness control
13	Empty	
14	Empty	
15	20A	<ul style="list-style-type: none">● Windshield wiper and washer● Rear window wiper and washer
16	20A	<ul style="list-style-type: none">● Brake light
17	15A	<ul style="list-style-type: none">● Air conditioner
18	15A	<ul style="list-style-type: none">● Backup light● Cruise control● ABS control
19	20A	<ul style="list-style-type: none">● Rear accessory power socket● Seat heater

■ Fuse panel located in the engine compartment

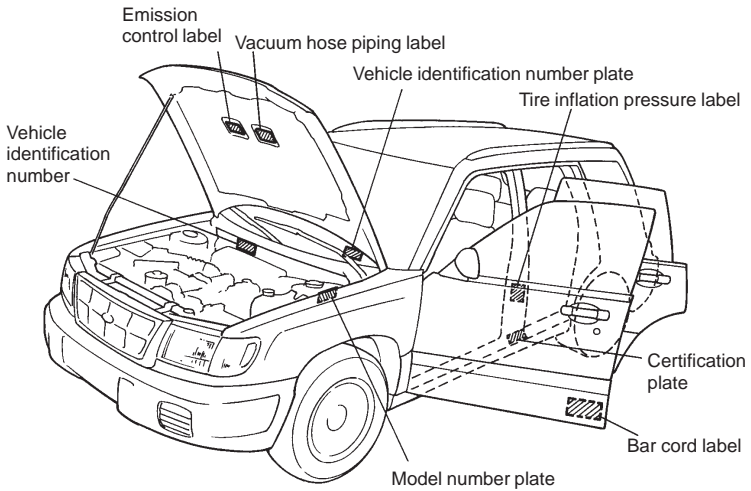


Fuse panel	Fuse rating	Circuit
20	20A	<ul style="list-style-type: none"> ● Radiator cooling fan (Main)
21	20A	<ul style="list-style-type: none"> ● Radiator cooling fan (Sub)
22	20A	<ul style="list-style-type: none"> ● Rear window defogger
23	15A	<ul style="list-style-type: none"> ● Hazard warning flasher ● Horn
24	15A	<ul style="list-style-type: none"> ● Meter ● SRS AIRBAG warning light
25	10A	<ul style="list-style-type: none"> ● Automatic transmission control unit
26	10A	<ul style="list-style-type: none"> ● Alternator
27	15A	<ul style="list-style-type: none"> ● Headlight (right side)
28	15A	<ul style="list-style-type: none"> ● Headlight (left side)
29	20A	<ul style="list-style-type: none"> ● Lighting switch
30	15A	<ul style="list-style-type: none"> ● Clock ● Interior light

Bulb chart

Description	Wattage	Bulb No.
Spot light	12V-8W	—
Room light	12V-8W	—
Front turn signal, parking light and front side marker light	12V-27/8W Amber	1157NA
Fog light	12V-51W	9006
Headlight	12V-60/55W	HB2 (H4)
Brake/tail light	12V-27/8W	1157
Rear turn signal light	12V-27W	1156
Backup light	12V-27W	1156
High mount stop light	12V-13W	912
License plate light	12V-5W	168

Vehicle identification



HS0226