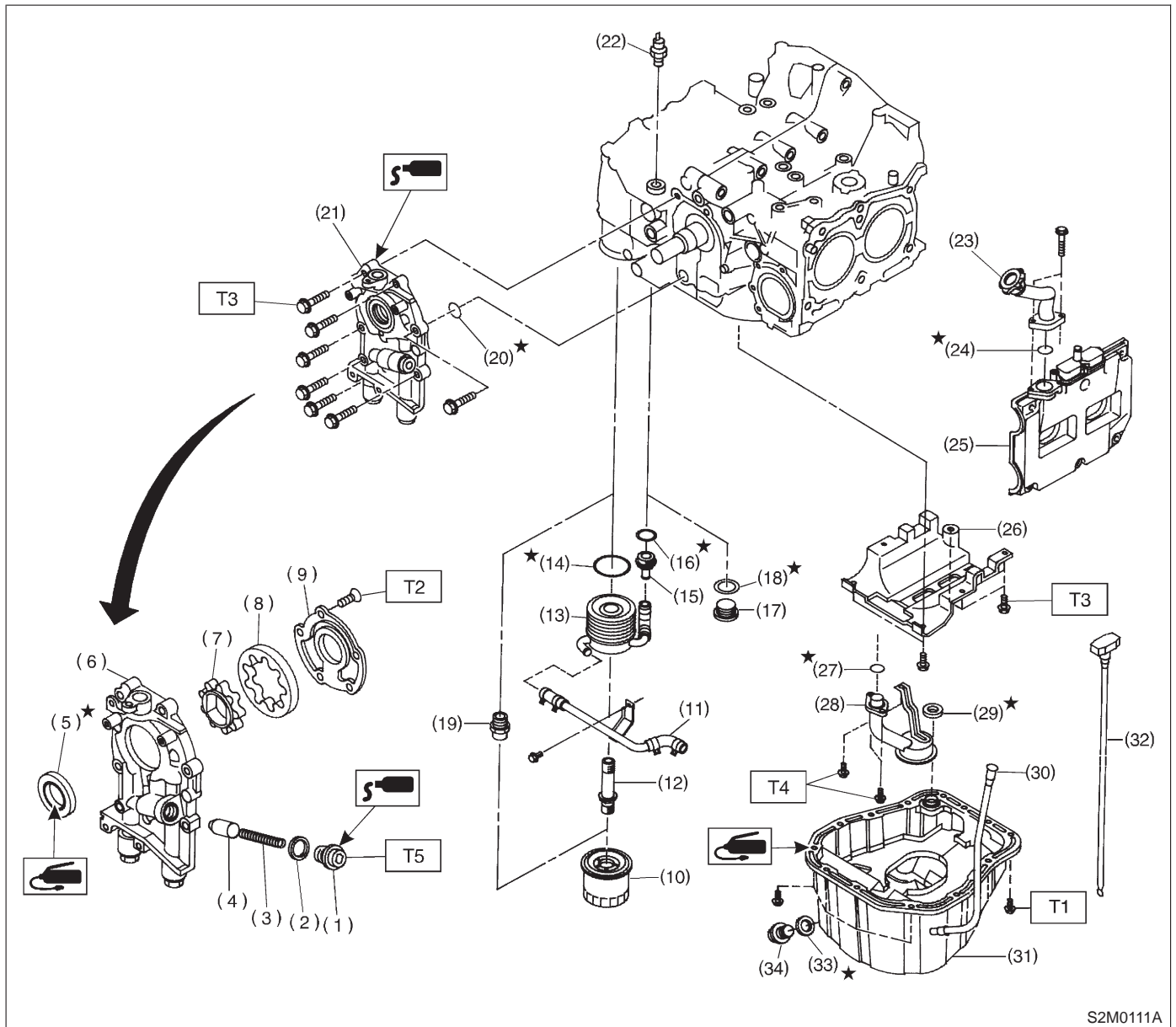


1. Lubrication System



S2M0111A

- |  |   |                            |
|--|---|----------------------------|
| (1) Plug   | (15) Nipple (AT vehicles)               | (29) Gasket                |
| (2) Washer                                       | (16) Gasket (AT vehicles)               | (30) Oil level gauge guide |
| (3) Relief valve spring                          | (17) Oil cooler connector (MT vehicles) | (31) Oil pan               |
| (4) Relief valve                                 | (18) Gasket (MT vehicles)               | (32) Oil level gauge       |
| (5) Oil seal                                     | (19) Oil filter connector (MT vehicles) | (33) Metal gasket          |
| (6) Oil pump case                                | (20) O-ring                             | (34) Drain plug            |
| (7) Inner rotor                                  | (21) Oil pump ASSY                      |                            |
| (8) Outer rotor                                  | (22) Oil pressure switch                |                            |
| (9) Oil pump cover                               | (23) Oil filler duct                    |                            |
| (10) Oil filter                                  | (24) O-ring                             |                            |
| (11) Oil cooler pipe and hose ASSY (AT vehicles) | (25) Cylinder head cover                |                            |
| (12) Connector (AT vehicles)                     | (26) Baffle plate                       |                            |
| (13) Oil cooler (AT vehicles)                    | (27) O-ring                             |                            |
| (14) O-ring (AT vehicles)                        | (28) Oil strainer                       |                            |

**Tightening torque: N-m (kg-m, ft-lb)**

- T1: 5 (0.5, 3.6)**  
**T2:  $5^{+1}/_{-0}$  (0.5<sup>+0.1</sup>/<sub>-0</sub>, 3.6<sup>+0.7</sup>/<sub>-0</sub>)**  
**T3: 6.4 (0.65, 4.7)**  
**T4: 10 (1.0, 7.0)**  
**T5: 44.1±3.4 (4.5±0.35, 32.5±2.5)**