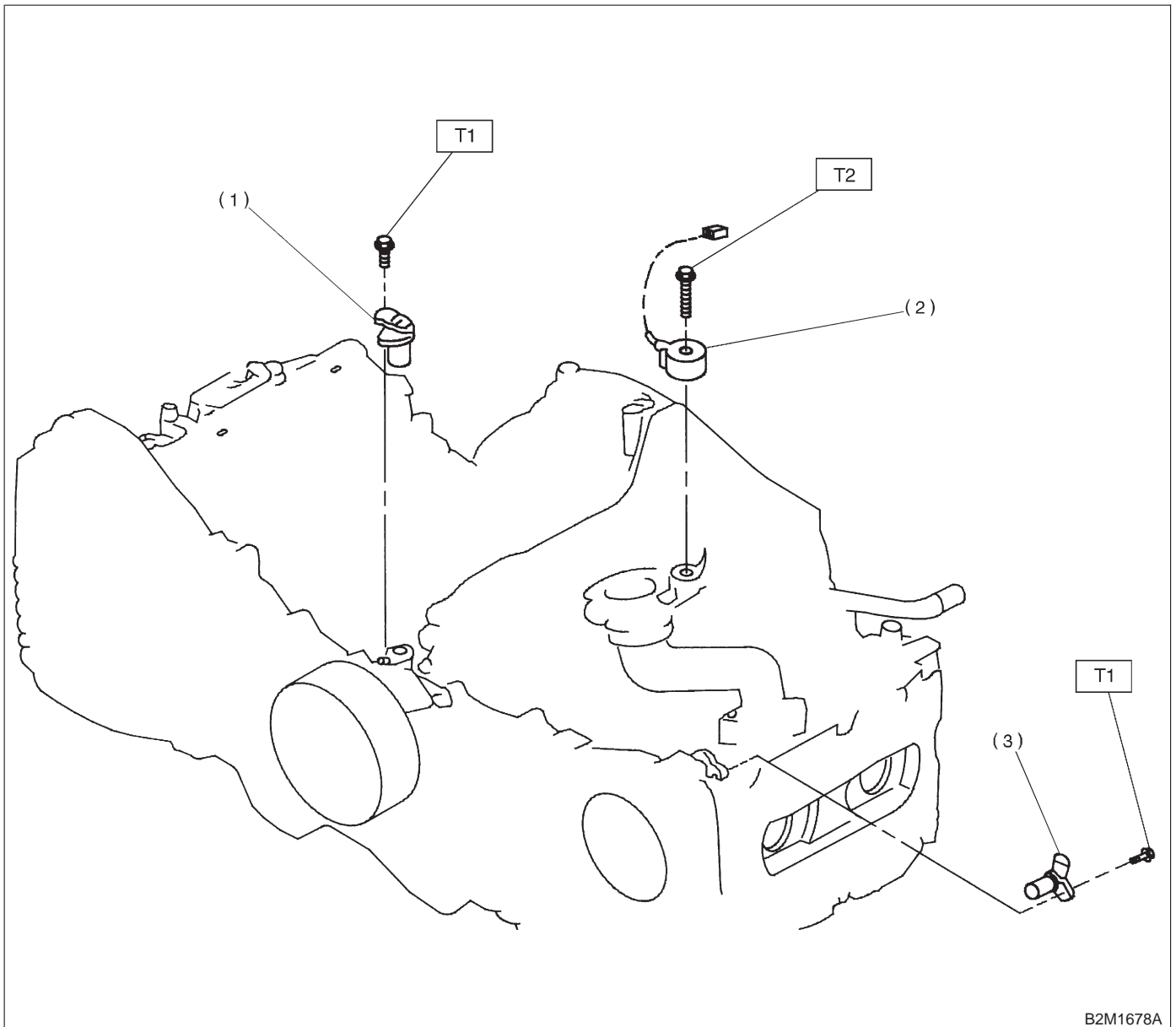


4. Crankshaft Position, Camshaft Position and Knock Sensors



B2M1678A

- (1) Crankangle position sensor
- (2) Knock sensor
- (3) Camshaft position sensor

Tightening torque: N-m (kg-m, ft-lb)

T1: 6.4 ± 0.5 (0.65 ± 0.05 , 4.7 ± 0.4)

T2: 23.5 ± 2.9 (2.4 ± 0.3 , 17.3 ± 2.1)
