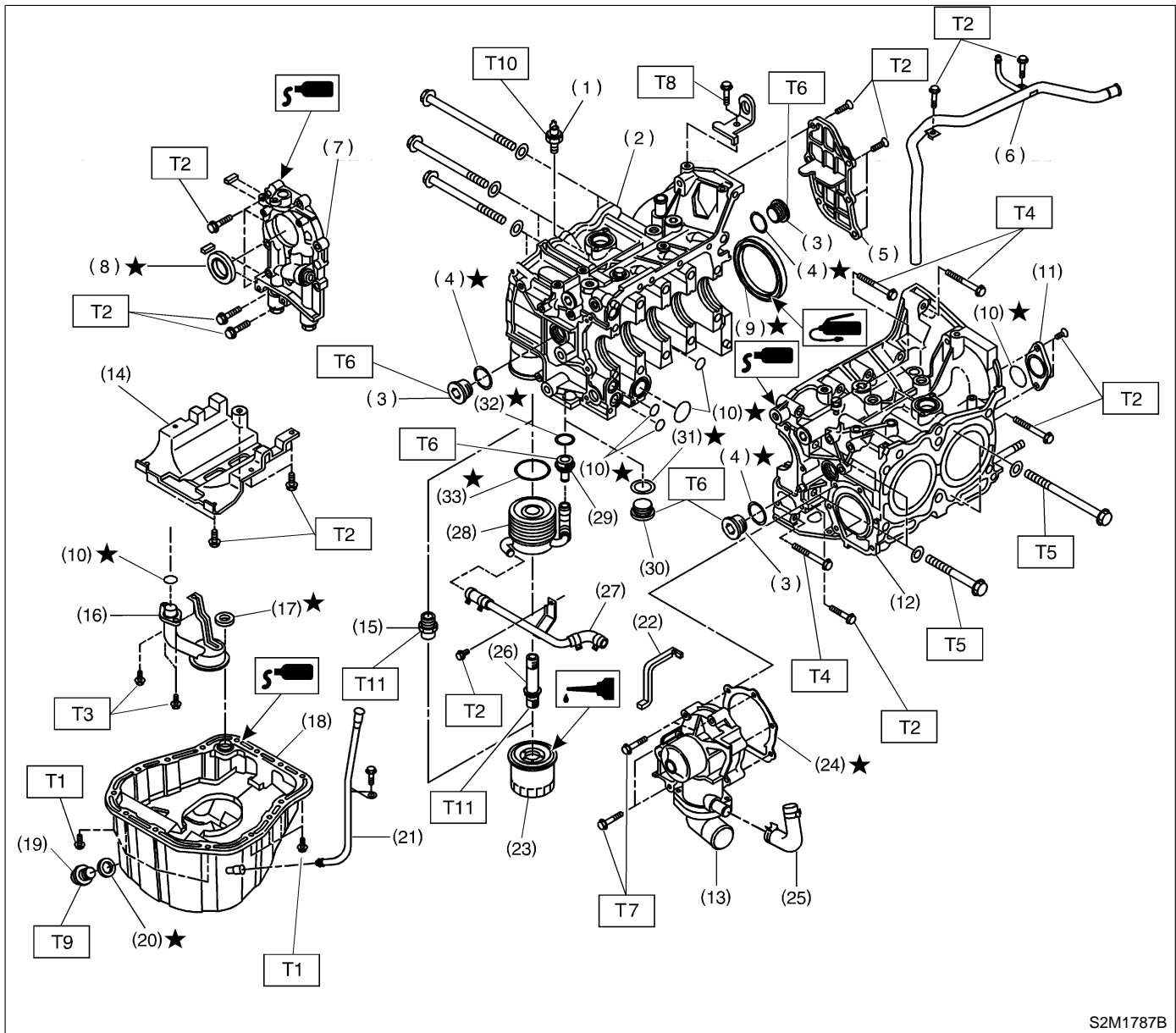


4. Cylinder Block



S2M1787B

- | | |
|---------------------------|---------------------------------------|
| (1) Oil pressure switch | (18) Oil pan |
| (2) Cylinder block (RH) | (19) Drain plug |
| (3) Service hole plug | (20) Metal gasket |
| (4) Gasket | (21) Oil level gauge guide |
| (5) Oil separator cover | (22) Water pump sealing |
| (6) Water by-pass pipe | (23) Oil filter |
| (7) Oil pump | (24) Gasket |
| (8) Front oil seal | (25) Water pump hose |
| (9) Rear oil seal | (26) Connector (AT vehicles) |
| (10) O-ring | (27) Water by-pass pipe (AT vehicles) |
| (11) Service hole cover | (28) Oil cooler (AT vehicles) |
| (12) Cylinder block (LH) | (29) Nipple (AT vehicles) |
| (13) Water pump | (30) Plug (MT vehicles) |
| (14) Baffle plate | (31) Gasket (MT vehicles) |
| (15) Oil filter connector | (32) Gasket (AT vehicles) |
| (16) Oil strainer | (33) O-ring |
| (17) Gasket | |

Tightening torque: N·m (kg·m, ft·lb)

- T1: 5 (0.5, 3.6)**
T2: 6.4 (0.65, 4.7)
T3: 10 (1.0, 7)
T4: 25±2 (2.5±0.2, 18.1±1.4)
T5: 47±3 (4.8±0.3, 34.7±2.2)
T6: 69±7 (7.0±0.7, 50.6±5.1)
T7: First 12±2 (1.2±0.2, 8.7±1.4)
Second 12±2 (1.2±0.2, 8.7±1.4)
T8: 16±1.5 (1.6±0.15, 11.6±1.1)
T9: 44 (4.5, 33)
T10: 25±3 (2.5±0.3, 18.1±2.2)
T11: 54±5 (5.5±0.5, 39.8±3.6)